

March Great Estates Auction @ The Gallery

MARCH 19 & 20

FEATURING: • The Lifetime Americana Collection of a Nebraska Couple • The Lifetime Art Collection of Ron & Betty Kozlowski, Arlington, OH
 • Items from The lifetime collection of an Ohio Gentleman • The lifetime collection of the late Chuck Auerbach, Akron, OH
 • The lifetime collection of an Ohio couple & select items from collectors across the country.

With nearly 1,000 lots, this two-day auction will include a wide selection!

American furniture & decorative arts from the 18th & 19th Century will sell on **Day One**, with fine examples of period painted furniture and accessories, a very nice sampler collection, band boxes (incl. Hannah Davis examples), & American folk art. **Day Two** is anchored by the lifetime art collection of Ron & Betty Kozlowski, who amassed hundreds of paintings including fine, folk, & outsider art examples from across several centuries. At the end of the session, we will sell a very large group of period frames, including several wonderful Newcomb-Macklin examples.

Browse, bid, & buy at AmeliaJeffers.com

LIVE & ONLINE
(Seat reservations recommended)
 Preview available during the week of the auction, daily from 9am-5pm or by appointment.
 23% Buyer's Premium
AUCTIONEERS:
Amelia Jeffers & Steve Bemiller



Adolph Stademann Oil On Canvas



Pair Of New England Transitional Ebonized And Gilt-Decorated Side Chairs



Clarence Holbrook Carter Watercolor



Folk Art Pom-Pom Rug



Fang Xiang Ink And Watercolor



Albrecht Dürer "The Resurrection," 1510, Woodcut On Laid Paper

Attributed to George Romney, "Wife of Captain John Albert Bentinck" Oil On Canvas



Polchrome Decorated Hanging Spoon Rack And Pewter Spoons

Rembrandt Van Rijn "The Descent From The Cross," 1633, Etching and Engraving on Wove Paper



Albert Julius Franke Oil On Board



Queen Anne Blue-Grey Painted Pine Tavern Table



Grain-Painted Pine Jelly Cupboard



Chip-Carved Box, Dated 1839



Carved Pine Trencher with Stone Fruit



Large Labeled Hannah Davis Wallpaper Band Box



Philadelphia, Pennsylvania Carved Hunting Horn with Native American Motifs



Native American Carved Burlwood Oval Bowl



Large Jimmy Lee Sudduth House Paint and Mud on Plywood



Attributed To Barbara Ebersol (Lancaster County, Pennsylvania) Amish Folk Art Paint-Decorated Poplar Wallbox



Folk Art Oil On Panel Portrait



J. Sheppard And Co. (Zanesville, Ohio) Amber Glass Eagle Flask



Howard Finster (Summerville, Georgia, 1916-2001) "Elvis at 3" Folk Art Sculpture, Dated 1991



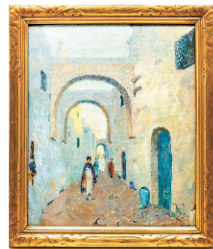
Two New Jersey Needlework Samplers, by Sisters Martha Carmans and Henrietta Carmans, Dated 1826 and 1834



Mary Cadwallader (Philadelphia, Pennsylvania) Quaker Needlework Sampler, Dated 1836



American School Watercolor and Silk Needlework Mourning Memorial for Sally Quincy and Her Infant Son, Samuel



Irma René Koen in a Newcomb-Macklin Frame



Large Labeled Newcomb-Macklin Arts and Crafts Giltwood Frame



Wonderful American Folk Art Paint-Decorated Poplar Slide Lid Box



Tiger Maple Lift Lid Seat



Grain-Painted Youth-Sized Blanket Chest Dated 1837



Benjamin Franklin Perkins (Alabama, 1914-1993) Outsider Art Acrylic on Canvas of The History of The Calendar, Dated 1990



Seven Daniel And Barbara Strawser (Pennsylvania) Folk Art Animal Carvings



New England Paint-Decorated Pine Tall Case Clock