



Jewelry, Fine Art, Decorative Furnishings & Accessories Auction



September 6, 2025 at 10am | *Previews: Thurs. Sept. 4, 2-6:30pm • Fri. Sept. 5 12-5pm • Sat. Sept. 6, 9-10am*



Teak, 1 of 3



White Gold Ring



Whistler Etching, 1 of 3



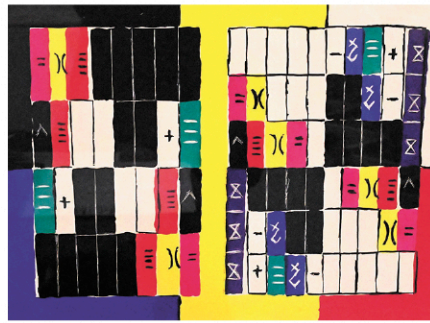
Custom, 1 of 3 piece set



Daniel Morper
32" x 26"



Gold & Pearl Brooch Dia. 1 1/2"



Alfred Jensen
15 1/2" x 19 1/2"



Gold Charm Bracelet



André Gisson
O/C 20" x 16"



Alice Beach Winter
O/C 20" x 24"



Gibson L-00
Acoustic Guitar,
1 of 9



Georg Jensen Sterling
Ht. 4"



Stickley Ht. 47"



Peter Dean
Oil on Masonite 11" x 15"



Giuseppe Bessi
Ht. 17.5"



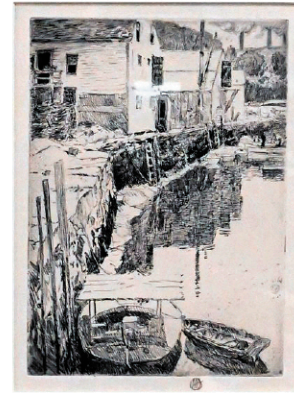
2013 Fender
Deluxe Telecaster,
1 of 9



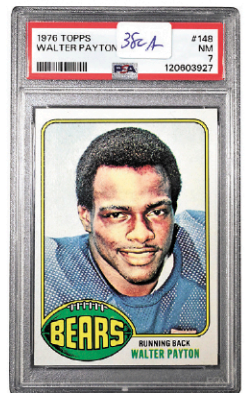
Andy Warhol Silkscreen
26 3/4" x 26 3/4"



14K Gold Pendant,
1 of 70 Jewelry Lots



Childe Hassam Etching
7" x 5"



1976 Topps
Walter Payton,
1 of 4 PSA Graded

430+ LOTS

Nadeau's Auction Gallery proudly presents the September 6th Auction of Jewelry, Fine Art, Decorative Furnishings & Accessories, featuring:

Over 70 lots of 14K and 18K gold jewelry, including rings, bracelets, necklaces, and watches—both vintage and modern. Featured brands include Tiffany & Co., Cartier, Omega, and Movado, with many pieces set with diamonds, pearls, and gemstones. Also included: sterling flatware, Egyptian and Continental silver, and Georg Jensen pieces.

Furnishings include 60 lots from Henredon, Eldred Wheeler, and Kingsley Bate. Highlights: Chippendale-style mahogany, teak outdoor sets, and lighting and mirrors by LaBarge and Paul Hansen, plus mid-century, Victorian, and Louis XV-style pieces.

Guitars range from a 1960s Gibson LG-0 to a 1970 Martin D-28, with standouts like a 1970s Ovation Custom Legend and 1961 Martin 00-18G. Electric highlights include

Fender and Gibson models, plus a 2022 D'Angelico Excel DC Tour.

Fine Art Highlights include works by André Gisson, Alice Beach Winter, Childe Hassam, and James McNeill Whistler, alongside Spring Blossom by William Thomas Wood. Additional notable pieces feature Alfred Jensen, Dietz Edzard, Orlando Greenwood, and Marek Halter. The collection also showcases over 100 decorative lots, 40+ pieces of Chinese porcelain, a Burmese bronze Buddha, an alabaster sculpture of Joan of Arc, Louis XV-style clocks, Delft candelabras, and an array of fine glassware.

Provenance: Property from a Prominent New York City Collector; an East Longmeadow, Massachusetts Estate; and the Collection of Barbara Rothschild Michaels and Roger Michaels of New York City and Ossining, New York, with many items descended through the family from the Estate of Herbert and Nannette Rothschild.

NadeausAuction.com

Bid live at **Liveauctioneers • Bidsquare • Invaluable**

invaluable
BIDSQUARE

25 Meadow Rd., Windsor, CT 06095 • (p) 860-246-2444 • (f) 860-524-8735 • info@NadeausAuction.com