



①



②



③

④



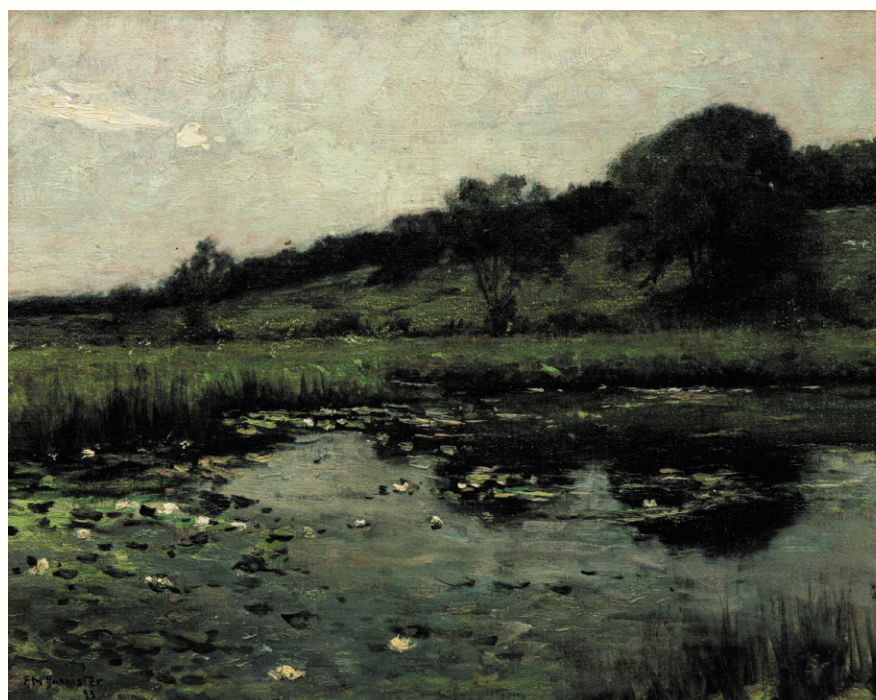
⑤



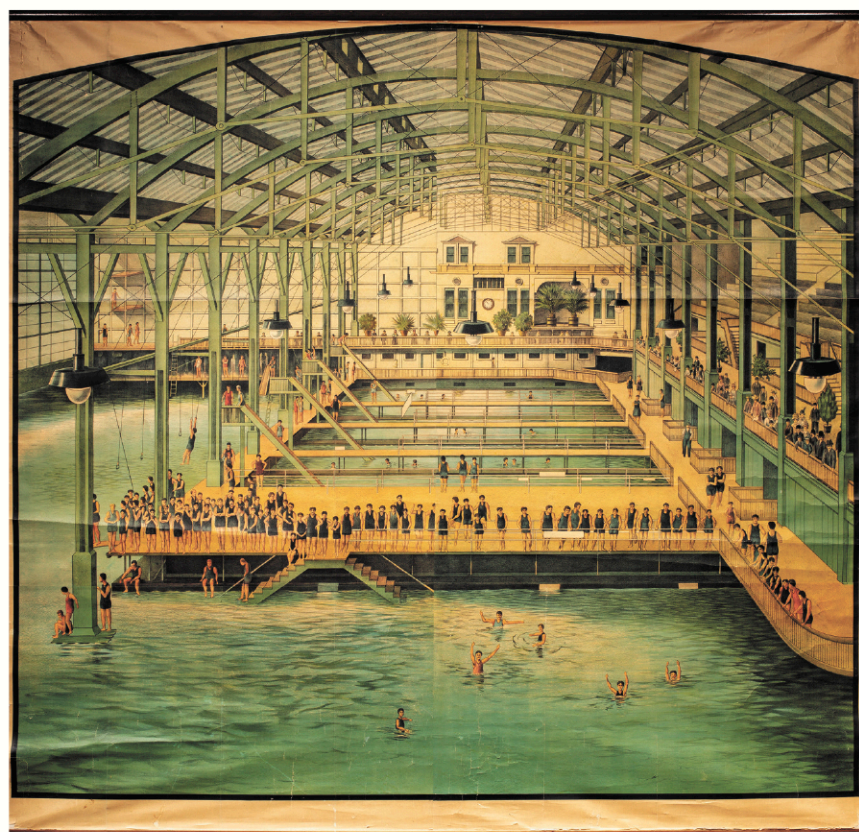
⑥



⑦



⑧



⑨



⑩

1. Marcel Dyf, *Une Vue du Port de Cannes*, circa 1950, oil on canvas, 15" x 18.25". 2. A Tibetan carpet, *Estate of Senator Dianne Feinstein*. 3. A diamond and platinum ring. 4. A Louis XV style inlaid lady's writing desk, *Estate of Senator Dianne Feinstein*. 5. A German carved chest, circa 1740, *Estate of Senator Dianne Feinstein*. 6. A Mayan plate depicting a priest on throne. 7. A Vista Alegre for Mottahedeh covered tureen and stand in the Lowestoft Rose pattern, *Estate of Senator Dianne Feinstein*. 8. Edward Mitchell Bannister, *Untitled (Summer Reflections)*, 1893, oil on canvas, 16.25" x 20.25". 9. Anonymous, *Sutro Baths of San Francisco*, 1896, lithograph in colors on four sheets of wove paper, 79.5" x 77.5". 10. A Tiffany & Company natural saltwater pearl, diamond and platinum topped 18k gold brooch.