



# THE 68TH ANNUAL New Hampshire Antiques Show

Melissa Alden  
Baker & Co. Antiques  
Betty H. Bell Antiques  
Bittner Antiques  
Pam & Martha Boynton  
Hollis Brodrick  
Robert Burger Antiques  
Cottage & Camp  
DeWolfe and Wood  
Early American Antiques  
Matt Ehresman  
Christopher & Bernadette Evans Antiques  
Robert T. Foley Antiques  
Tucker Frey Antiques  
Oliver Garland  
Pat & Rich Garthoeffner  
Gemini Antiques, Ltd.  
J & G Antiques  
Scott Bassoff and Sandy Jacobs

Bob Jessen & Jim Hohnwald  
Jewett-Berdan Antiques  
Allan Katz Americana  
Kelly Kinzle  
William R. & Teresa F. Kurau  
Nathan Liverant and Son, LLC  
Thomas R. Longacre Antiques  
Sheridan Loyd Antiques  
John Hunt Marshall  
Ian McKelvey Antiques  
Mead Americana  
Judith & James Milne/At Home Antiques  
Newsom & Berdan Antiques  
Jeff & Holly Noordsy Art and Antiques  
Old as Adam  
Olde Hope Antiques, Inc.  
Randi Ona Antiques  
Hercules Pappachristos  
Period To Mod/ Brennan & Mouilleseaux

Pewter & Wood Antiques  
Sharon Platt American Antiques  
Nancy & Gene Pratt  
Thomas M. Rawson Antiques  
Resser-Thorner Americana  
Jeffrey Roelof  
Peter Sawyer Antiques  
David A. Schorsch - Eileen M. Smiles  
Spencer Marks  
Stephen Douglas at Walpole  
Steven F. Still Antiques  
David Thompson Antiques & Art  
Jeffrey Tillou Antiques  
Jonathan Trace  
Village Braider, Inc.  
Michael Whittemore Antiques & Folk Art  
Withington & Co.  
Douglas Wyant Antiques, LLC  
Ziebarth's Gallery

August 7–9, 2025

Thursday & Friday: 10am–7pm, Saturday: 10am–4pm

DoubleTree by Hilton, Manchester, NH, 603.625.1000

[nhada.org](http://nhada.org)





# THE 68<sup>TH</sup> ANNUAL New Hampshire Antiques Show

**SPECIAL  
SHOW  
SECTION**

## Welcome To The 68th Annual New Hampshire Antiques Show



The 68th Annual New Hampshire Antiques Dealers Association (NHADA) Show is on the horizon, and, once again, the Association has been diligently working on guaranteeing that it retains its preeminent position amongst all nationwide fairs. Having led this organization for over a year, my belief that our volunteer Board is that rare combination of individuals who remain committed to a great antiquing tradition has been confirmed. The Dealers Show would not be able to succeed without them.

As has been the case for nearly seven decades, the Dealers Show includes those who represent many categories in the field of antiques. We strive to invite exhibitors who are both regular participants in many shows throughout the year, as well as those who limit themselves to only a few. This cross-section of dealers, together with the Show Committee's encouragement that participants bring items from

their own collections, keeps the event fresh and exciting.

For 2025, we are welcoming two new dealers to the show: Betty H. Bell Antiques (Dallas) and Mead Americana (Ambler, Penn.). They are joining a diverse group of top-ranked dealers who hail from different parts of the country. We believe that you will agree that they are great additions to an already stellar group.

Based on a recent event, we are anticipating a wonderful show. Many of you know that we promoted the inaugural NHADA Dealers Show on June 1 at the Everett Arena in Concord, N.H. This gave all members of the organization an opportunity to participate in an NHADA-sponsored show. By all accounts, it was a great success for both the participating dealers and for those 500+ individuals who attended this one-day show. We are looking forward to next year's event, which will take place at the

same location on June 7, 2026.

Dealers have embraced today's new price structure for antiques, and as a result, there are positive signs that a younger generation is getting interested in collecting. Buying at reasonable levels makes collecting fun again, and dealers will be able to remain successful if they follow this trend.

As I mentioned last year, it is important to remember that many other NHADA members have open shops in New Hampshire, and they are all looking forward to welcoming you and your business. Please take the opportunity to visit the organization's website to find their locations and hours of operation. Remember, to paraphrase Vito Corleone in *The Godfather*, "our dealers will make you an offer you can't refuse."

*Sincerely,*  
**Richard Thorner, President,**  
**New Hampshire Antiques**  
**Dealers Association**

## NHADA DEALER DIRECTORY

Melissa Alden, Portsmouth, NH.....	NH-34	Mead Americana, Ambler, PA.....	NH-29
Baker & Co. Antiques, Delmar, NY.....	NH-42	Judith & James Milne/At Home Antiques, Kingston, NY.....	NH-52
Betty H. Bell Antiques, Dallas, TX.....	NH-58	Newsom & Berdan Antiques, Thomasville, PA.....	NH-33
Bittner Antiques, Shelburne, VT.....	NH-22	Jeff & Holly Noordsy Art and Antiques, Cornwall, VT.....	NH-21
Pam & Martha Boynton, Townsend, MA.....	NH-44	Old as Adam, Warren, RI.....	NH-51
Hollis Brodrick, Portsmouth, NH.....	NH-17	Olde Hope Antiques, Inc., New York, NY.....	NH-36
Robert Burger Antiques, Mount Vernon, OH.....	NH-38	Randi Ona Antiques, Wayne, NJ.....	NH-54
Cottage & Camp, Millerton, NY.....	NH-8	Hercules Pappachristos, Derry, NH.....	NH-26
DeWolfe and Wood, Alfred, ME.....	NH-15	Period To Mod/Brennan & Mouilleseaux Antiques & Design, Briarcliff Manor, NY.....	NH-45
Early American Antiques, Canfield, OH.....	NH-46	Pewter & Wood Antiques, Enfield, NH.....	NH-18
Matt Ehresman, Wadsworth, OH.....	NH-49	Sharon Platt American Antiques, New Castle, NH.....	NH-11
Christopher & Bernadette Evans Antiques, Waynesboro, VA.....	NH-27	Nancy & Gene Pratt, Victor, NY.....	NH-39
Robert T. Foley Antiques, Gray, ME.....	NH-53	Thomas M. Rawson Antiques, Cedar Rapids, IA.....	NH-55
Tucker Frey Antiques, Woodbury, CT.....	NH-20	Resser-Thorner Americana, Manchester, NH.....	NH-7
Oliver Garland, Falmouth, MA.....	NH-10	Jeffrey Roelof, Kalamazoo, MI.....	NH-6
Pat & Rich Garthoeffner, Lititz, PA.....	NH-48	Peter Sawyer Antiques, Exeter, NH.....	NH-3
Gemini Antiques, Ltd., Whitehouse Station, NJ.....	NH-12	David A. Schorsch - Eileen M. Smiles, Fine Americana, Woodbury, CT.....	NH-50
J & G Antiques, Amityville, NY.....	NH-5	Spencer Marks, Southampton, MA.....	NH-56
Scott Bassoff and Sandy Jacobs, Swampscott, MA.....	NH-4	Stephen Douglas at Walpole, Walpole, NH.....	NH-23
Bob Jessen & Jim Hohnwald, Fitzwilliam, NH.....	NH-32	Steven F. Still Antiques, Manheim, PA.....	NH-14
Jewett-Berdan Antiques, Newcastle, ME.....	NH-30-31	David Thompson Antiques & Art, So. Dennis, MA.....	NH-35
Allan Katz Americana, Madison, CT.....	NH-9	Jeffrey Tillou Antiques, Litchfield, CT.....	NH-47
Kelly Kinzle, New Oxford, PA.....	NH-19	Village Braider, Inc., Plymouth, MA.....	NH-13
William R. & Teresa F. Kurau, Collegeville, PA.....	NH-41	Michael Whittemore Antiques & Folk Art, Punta Gorda, FL.....	NH-25
Nathan Liverant and Son, LLC, Colchester, CT.....	NH-43	Withington & Co., Cape Neddick, ME.....	NH-28
Thomas R. Longacre Antiques, Marlborough, NH.....	NH-40	Douglas Wyant Antiques, LLC, Cassopolis, MI.....	NH-24
Sheridan Loyd Antiques, St. Joseph, MO.....	NH-57	Ziebarth's Gallery, Mount Horeb, WI.....	NH-37
John Hunt Marshall, Westhampton, MA.....	NH-59		
Ian McKelvey Antiques, Columbia, CT.....	NH-16		



# PETER SAWYER ANTIQUES

17 COURT STREET | EXETER, NH 03833 | 603 772 5279



## Exceptional Banjo Clock

Aaron Willard Jr, Boston, Massachusetts,  
ca. 1810

Featuring a carved and gilded eagle likely  
the work of John Doggett (1780-1857)  
and a lower glass depicting  
the 44-gun *Constitution*  
escaping from the Royal Navy ships  
during the War of 1812.

We specialize in fine New England Antiques  
from the late 18th and early 19th century.  
Generally, our shop is open Monday through Thursday  
and visitors are welcome to stop by anytime although  
a call ahead is best to insure we are open. We are  
always eager to buy fine New England objects.

*Peter Sawyer/Scott Bassett*  
*Petersawyer@comcast.net*  
*PeterSawyerAntiques.com*







# THE 68<sup>TH</sup> ANNUAL New Hampshire Antiques Show

SPECIAL  
SHOW  
SECTION

[nhada.org](http://nhada.org)



**CHRISTOPHER & BERNADETTE EVANS ANTIQUES**, Waynesboro, Va. — A late Nineteenth Century oval Nantucket basket, 7 by 11½ inches.



**NANCY & GENE PRATT**, Victor, N.Y. — Miniature paint-decorated blanket chest with exceptional cut-out bracket base, poplar wood, circa 1840, 13½ inches wide by 7½ inches high by 6 inches deep.



**J&G ANTIQUES**, Amityville, N.Y. — A New England Queen Anne period desk-on-frame, circa 1740-60, with original frame and brasses. Interior has five small drawers, valence and "covered well."



**PERIOD TO MOD/BRENNAN & MOUILLE-SEAUX ANTIQUES & DESIGN**, Briarcliff Manor, N.Y. — Freely brush-decorated box, probably Pennsylvania, circa 1840.



**DEWOLFE & WOOD RARE BOOKS**, Alfred, Maine — A variety of small Shaker items, including a small oval box with a pincushion, 3½ inches long; an oval box with partial label for "Cream of Tartar," ex-Andrews collection, 6 inches long; Mount Lebanon Shaker carrier with cover, 9 inches long; and mold used to form emeries, ex-Belfit collection, 9 inches long.



Fiddler's Forge metal trade sign from Pittstown NJ.  
Great graphics of anvil and fiddle. 36" by 24"



## Scott Bassoff Sandy Jacobs ANTIQUES

Swampscott, MA 01907 603.801.5532 mobile  
[www.sandyjacobsantiques.com](http://www.sandyjacobsantiques.com) [sandyjnh1@gmail.com](mailto:sandyjnh1@gmail.com)  
[www.scottbassoffsandyjacobsantiques.com](http://www.scottbassoffsandyjacobsantiques.com)



Smallest best woven basket in excellent condition and old surface. 2" by 1 1/2"



Huge and possibly largest pantry box in original red paint. Ultimate bottom for a stack. 24" diameter by 17 1/2" tall



Great wooden fireboard of a house, trees and man picking apples from tree. 30 1/2" by 24"





516-582-1849 • [antiq54@aol.com](mailto:antiq54@aol.com)  
[www.jandgantiques.com](http://www.jandgantiques.com)



**Tiger Maple Desk**, this unique Tiger Maple desk has a wonderfully appointed interior and stands on brandy legs. Above the desk is an O/C of the steam tug "VOLUNTEER," signed Otto Muhlenfeld, 1908. Otto is listed in 'Who Was Who in American Art:' as the "Baltimore Port Painter." Also on top of the desk is a Seaworthy Pond Boat model and pair of 18c brass candle sticks with mid drip pans.

**Dressing Table**, Portsmouth, NH, circa 1805-1820, elliptical dressing table. This rare example is decorated with a period painted surface as opposed to a polished mahogany and mahogany veneer example. The entire table has been decorated with a delightful painted surface, including the tall, tapered legs. The painted surface can be attributed to Samuel Beck circa 1810 who was noted for executing remarkably vibrant decorative schemes on period furniture pieces. 36" high by 37" wide by 17" deep. For additional information reference pages 148-149 in "Portsmouth Masterwork from the New Hampshire Seacoast."



**Diminutive Secretary**, Attributed to the Portsmouth, New Hampshire workshop of Judkins and Senter. The height is only 5' 3" and the width 36". The top is 10.5" deep and the base is 20" deep. Having beautiful inlays and contrasting wood veneer throughout the secretary, it becomes an outstanding one-of-a-kind piece.



Offering antique period furniture, vintage decoys, folk art and accessories.

**VISIT US AT THE NHADA SHOW! – BOOTH #54**

Amityville, New York | By appointment – (516) 582-1849 | [antiq54@aol.com](mailto:antiq54@aol.com) | [jandgantiques.com](http://jandgantiques.com)





# THE 68<sup>TH</sup> ANNUAL New Hampshire Antiques Show

SPECIAL  
SHOW  
SECTION



**WILLIAM R. & TERESA F. KURAU**, Collegeville, Penn. — "Thanksgiving Day 1863," painted by Addie Harrington based on a Thomas Nast engraving. The painting depicts Lady Liberty in the center, kneeling at the Union Altar and praying for peace while surrounded by six scenes of Thanksgiving Prayer: the Union Army, Presidents George Washington and Abraham Lincoln, the Navy, farmers in the country, residents gathered in a town hall and emancipated slaves.

**August 7 – 9, 2025**  
**THURSDAY & FRIDAY: 10AM – 7PM**  
**SATURDAY: 10AM – 4PM**



**DAVID THOMPSON ANTIQUES & ART**, South Dennis, Mass. — Charming 9 1/2-inch-long brass hand holding leaves, that has been displayed for many years as a wall ornament, with old hanger on back. Originally a curtain tieback, it has been in use as an interesting relic for decades. It bears an English registry mark dating it to 1845.



**RANDI ONA ANTIQUES**, Wayne, N.J. — Nineteenth Century basket in original red painted surface; excellent condition.



**PETER SAWYER ANTIQUES**, Exeter, N.H. — Fine banjo clock depicting Mount Vernon in the lower glass, warranted by Sawin and Dyar, Boston.



## Jeffrey Roelof ANTIQUES

269-271-1799  
folkart1@yahoo.com

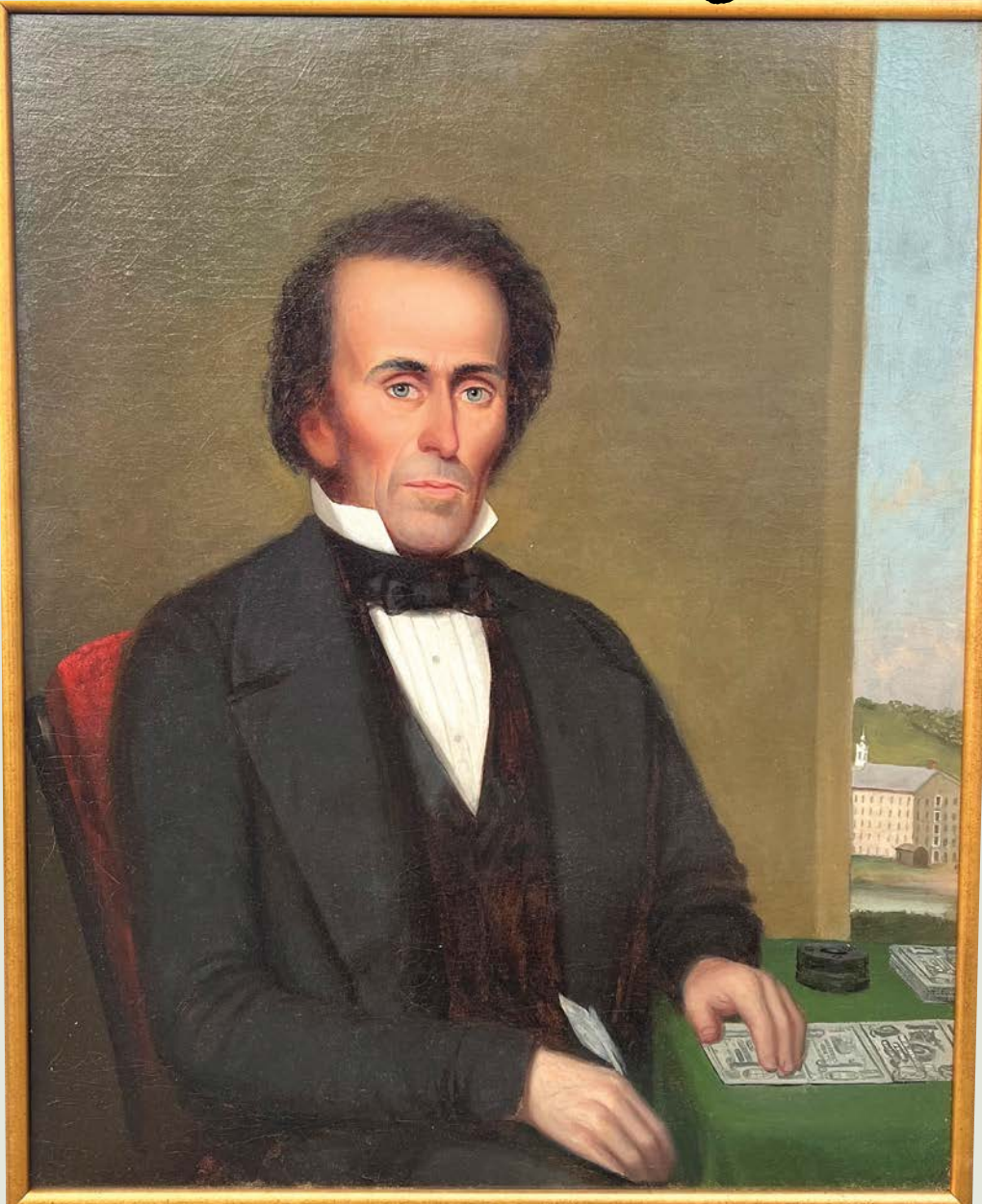


**BOOTH #6**



SPECIAL  
SHOW  
SECTIONTHE 68<sup>TH</sup> ANNUAL  
New Hampshire Antiques Show

# *We are Banking on a Good Show!*



Man Signing Bank Notes, oil on canvas (relined), 28.5" x 36" (sight), c. 1830-1840. A rare occupational image relating to an obscure activity of a banker or company president issuing bank notes on behalf of his business. This painting was on the cover of the March/April, 2008 issue of *Paper Money*.  
From the collection of Rex Stark.

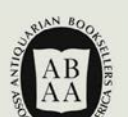
We will be featuring  
selections from the  
**Collection of Rex Stark**



Pearlware ABC plate with a polychromed bust portrait of President Abraham Lincoln.  
Diameter: 6". From the collection of Rex Stark.



A Rare American 18th Century Masonic Jewel  
Attributed to Jacob Thurston (1771-1820)  
of Schenectady, New York, Dated 1798,  
this 2" x 2.75" silver medal was owned by  
Joseph Carley (1756-1842), a member of the  
Saint George's Lodge, F & A.M., Schenectady, N.Y.  
as noted on its obverse. The reverse  
consists of an engraved bust profile of  
George Washington surmounted by the motto  
"Virtue shall cement US" Carley served in the  
2nd New York Regiment during the  
American Revolution. A more detailed  
description is available.



RESSER-THORNER  
**AMERICANA**

*A single-owner shop in the New England tradition*



603-540-4712

695 River Road, Manchester, NH 03104

*By Appointment*







# THE 68<sup>TH</sup> ANNUAL New Hampshire Antiques Show

SPECIAL  
SHOW  
SECTION



DEWOLFE & WOOD RARE BOOKS, Alfred, Maine — A fine painting of Portland Head Light by Maine artist George M. Hathway (1851-1903).



DAVID THOMPSON ANTIQUES & ART, South Dennis, Mass. — Large, double-sided carved wood heart cookie or cake board, probably pear wood, Nineteenth Century, 16 by 13 by 1 1/4 inches.

NANCY & GENE PRATT, Victor, N.Y. — One-gallon ovoid presentation jug by I.V. Machett, Cornwall, N.Y., incised "Levi Conklin, June 5, 1855."



SPENCER MARKS, Southampton, Mass. — Erik Magnussen .930 silver mounted Bing and Groendahl lamp, Copenhagen, Denmark, 1911.

HOLLIS BRODRICK, Portsmouth, N.H. — Rare Eighteenth Century "wedding band" chamberstick.



COTTAGE + CAMP  
23 MAIN STREET  
MILLERTON NEW YORK



@ COTTAGEANDCAMP

BOOTH #5





# ALLAN KATZ

## Americana



### **An Exceptional Pig Trade Sign**

Carved and paint decorated pine. Circa 1890.

Measures an impressive 33.5" x 73" x 4.75"

Provenance: Displayed at "Bothay's Farm" in Essex, Massachusetts  
and at the Bonnet House Museum in Ft. Lauderdale, Florida.

### **Allan & Penny Katz**

363 Boston Post Road, Madison, CT 06443

*By Appointment*

Tel. (203) 494-3359 folkkatz@gmail.com

Exhibiting on Incollect.com



# THE 68<sup>TH</sup> ANNUAL New Hampshire Antiques Show

**SPECIAL  
SHOW  
SECTION**



**PETER SAWYER ANTIQUES, Exeter, N.H.** — Exceptional tiger maple candlestand in original red finish.



**GARTHOEFFNER GALLERY ANTIQUES, Lititz, Penn.** — Knife box with cutout heart, circa 1850, original paint.



**SPENCER MARKS, Southamton, Mass.** — Gorham Aesthetic Movement antique sterling silver cake basket, Providence, R.I., 1872.



**DEWOLFE & WOOD RARE BOOKS, Alfred, Maine** — An 1821 broadside documenting the hanging of 16-year-old Salem, Mass., boy Stephen Clark. He was convicted of the crime of arson.



**Monumental 19th c. Folk Art Carnival Painting**  
Depicting Punch. Oil on panel 86" by 61"

## OLIVER GARLAND

*Please come  
and see this year's  
fresh offerings at  
Booth #17*

**Inquiries: 774-255-0199**  
**odgarland@gmail.com**  
**Mail: PO Box 763**  
**Falmouth, MA 02541**



SPECIAL  
SHOW  
SECTION

THE 68<sup>TH</sup> ANNUAL  
New Hampshire Antiques Show



Sharon Platt

American  
Antiques

Period Decorative Arts for the Early American Home



Booth No. 36



Early New England Treen Noggin - Provenance:  
The Florence Maine Collection, Skinners 1977



Rare 18th English Pin Ball featuring Hearts, Motto, English Crown,  
Original Linen Strap, & Pins c. 1680-1720



Rare 18th c. Wooden Mouse Trap Along  
with a 19th c. Cloth Covered Mouse

View [www.sharonplatt.com](http://www.sharonplatt.com) for Ad Details

sharon@sharonplatt.com • 603-430-7556 • PO Box 723, New Castle, NH 03854





# THE 68<sup>TH</sup> ANNUAL New Hampshire Antiques Show

**SPECIAL  
SHOW  
SECTION**



**SPENCER MARKS**, Southampton, Mass. — Shreve, Crump & Low Arts and Crafts sterling silver and semi-precious stone two-handled condiment dish, Boston, Mass., circa 1905.



**STEVEN F. STILL ANTIQUES**, Manheim, Penn. — Ohio stoneware harvest jug, 13 inches high, with the initials "W. C." and dated "1869."



**STEPHEN/DOUGLAS**, Walpole, N.H. & Rockingham, Vt. — Eighteenth Century English Delftware posset pot.



**DOUGLAS R WYANT ANTIQUES**, Cassopolis, Mich. — Wool theorem.



**PETER SAWYER ANTIQUES**, Exeter, N.H. — Nineteenth Century cast iron plaque with bust of George Washington.



## Gemini Antiques Ltd. Antique Toy, Bank & Folk Art Specialists

Bearded Mythical Agricultural Figure  
Rare Cast Iron Architectural Element  
By an Unknown New England Foundry  
Circa 1875 - 22" Tall x 14" Wide



"The Seasons of the Year"  
Spring-Summer-Fall-Winter  
Austrian Glazed Ceramic Figures  
Circa Late 1930's - Tallest is 19 1/4"

Peoples Line Omnibus Tin Toy  
Made by the Althof-Bergmann Company  
New York - Circa 1875 - 21 1/2" Long



P.O. Box 635 - Oldwick, NJ 08858

Leon Weiss: 917-991-7352 or [leonweiss@me.com](mailto:leonweiss@me.com) • Steven Weiss: 212-729-0011 or [sweiss57@me.com](mailto:sweiss57@me.com)



SPECIAL  
SHOW  
SECTION

THE 68<sup>TH</sup> ANNUAL  
New Hampshire Antiques Show



*China trade watercolor of the ship D. Marcy, Hong Kong November 26th 1864  
Wm. Ross Jr. Built in Portsmouth, New Hampshire, sight size 23 x 31½ in., original China trade frame.*



*Barque Amanda of Boston, Commander Daniel D. Barker, "Entering the harbor, Malta"  
October 1852. Watercolor, sight size 18 x 24 in. Nicolo Cammillieri.*



Plymouth MA **VILLAGE BRAIDER** 508-746-9625







# THE 68<sup>TH</sup> ANNUAL New Hampshire Antiques Show

SPECIAL  
SHOW  
SECTION



Steven F. Still  
*Antiques*

1717 South Colebrook Road  
Manheim, PA 17545  
Cell: (717) 682-0410

[www.stevenfstillantiques.com](http://www.stevenfstillantiques.com)



PETER SAWYER ANTIQUES, Exeter, N.H. — The extraordinary signature in the arch of a tall clock by Nathaniel Munroe, Concord, Mass.



BAKER & CO ANTIQUES, Delmar, N.Y. — A wide variety of top Americana folk art.



MEAD AMERICANA, Ambler, Penn. — Cuff and coat "leg bone" style buttons of the First South Carolina Regiment, Continental Army, Revolutionary War. See Troiani and Kochan's *Insignia* p. 246.



J&G ANTIQUES, Amityville, N.Y. — David Ward decoys and shorebirds.



Patriotic Panel of the Washington Light Guard  
Led by Captain John Fagan

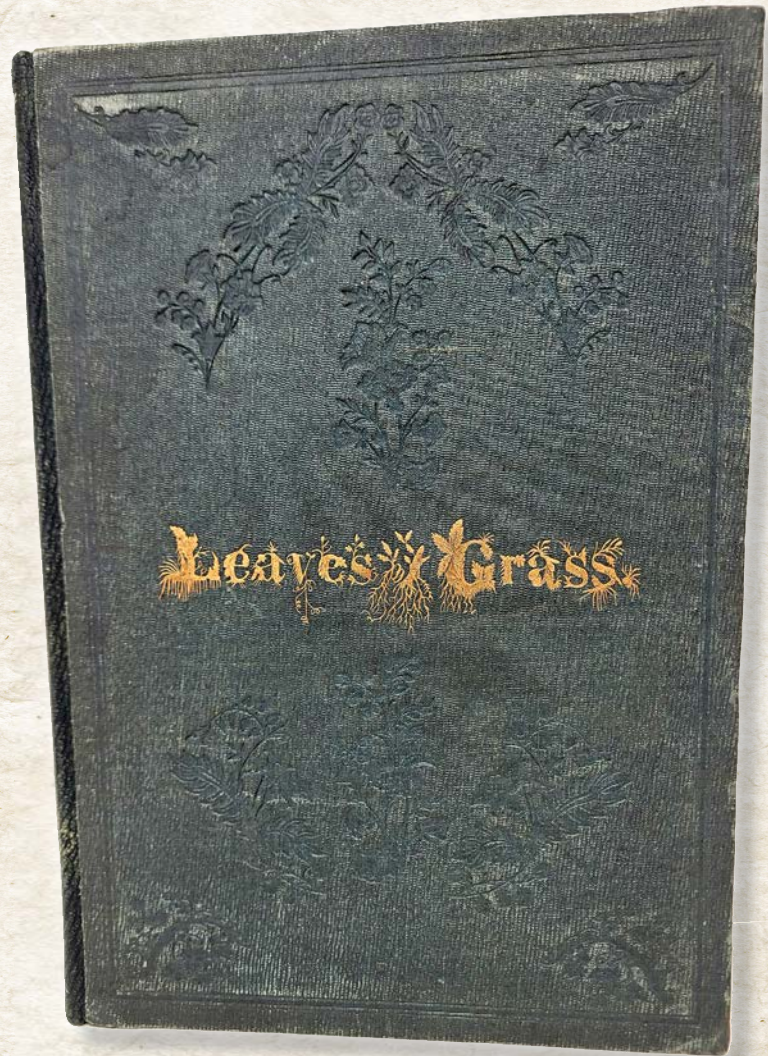
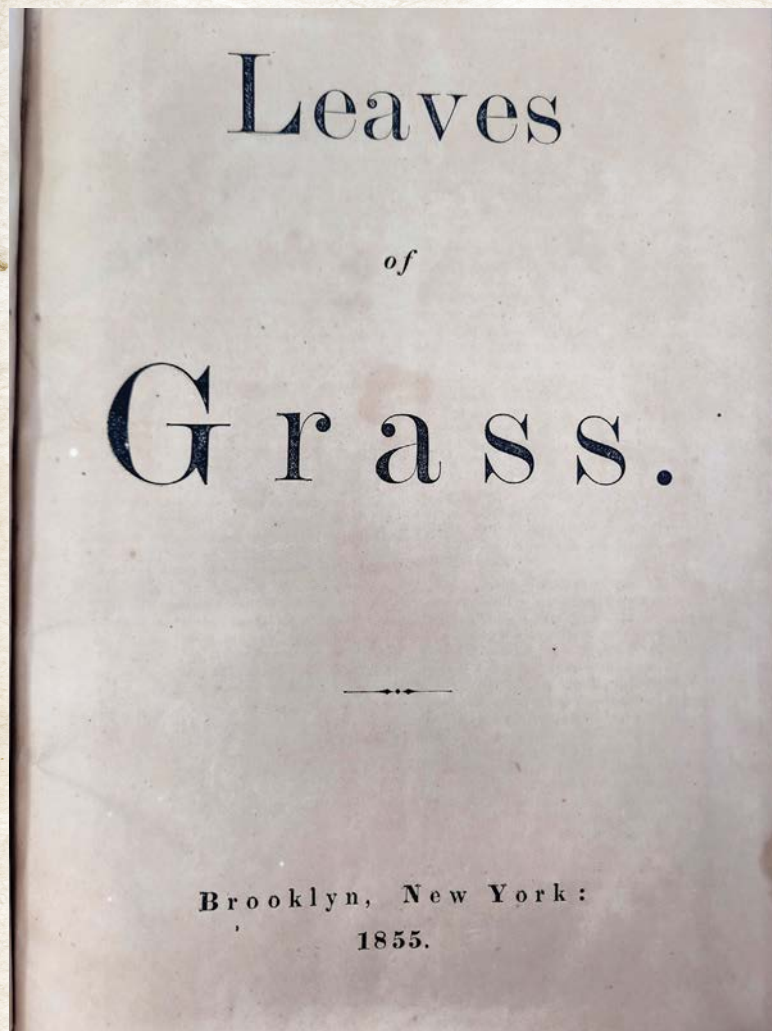
This oil painting on wood panel was painted by  
Edward Kranich from Elizabeth, New Jersey.

The panel commemorates the organization of the  
Light Guard on October 6, 1879.

Height: 52" Width: 42"



*“Resist much, obey little”*



## First Edition of Walt Whitman's Leaves of Grass, 1855

Whitman, Walt. Leaves of Grass. Brooklyn, [Published by the author], 1855. The book is in good condition with the spine replaced, a few nicks in the binding have been filled, light soiling throughout, and minor stains to the edges of 8 leaves—twentieth-century ownership writing in marker on the front flyleaf and the inside back cover. Contact us for a full description.

Visit us in booth 23 to view our fine books, ephemera, Shaker items, and antiques.

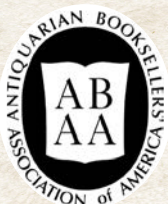
## DeWolfe & Wood Rare Books

Route 202 | P.O. Box 425 | Alfred, ME 04002  
(207) 490-5572

[www.dewolfeandwood.com](http://www.dewolfeandwood.com) | [dewolfeandwood@roadrunner.com](mailto:dewolfeandwood@roadrunner.com)

Our shop is located at 2 Waterboro Rd., Alfred, Maine. Open most days from 6:00 a.m. to 3 p.m.

Successors to Tuttle's of Vermont serving collectors and readers since 1830  
Find the best in rare books and ephemera at [ABAA.org](http://ABAA.org)







# THE 68<sup>TH</sup> ANNUAL New Hampshire Antiques Show

SPECIAL  
SHOW  
SECTION



PETER SAWYER ANTIQUES, Exeter, N.H. — One of three extraordinary original finials on a Simon Willard tall clock.



STEVEN F. STILL ANTIQUES, Manheim, Penn. — Double-sided trade sign advertising "Miller M. Fogg House Painter" on one side and "House and Sign Painting" on the other side, 17-3/8 by 23-7/8 inches.

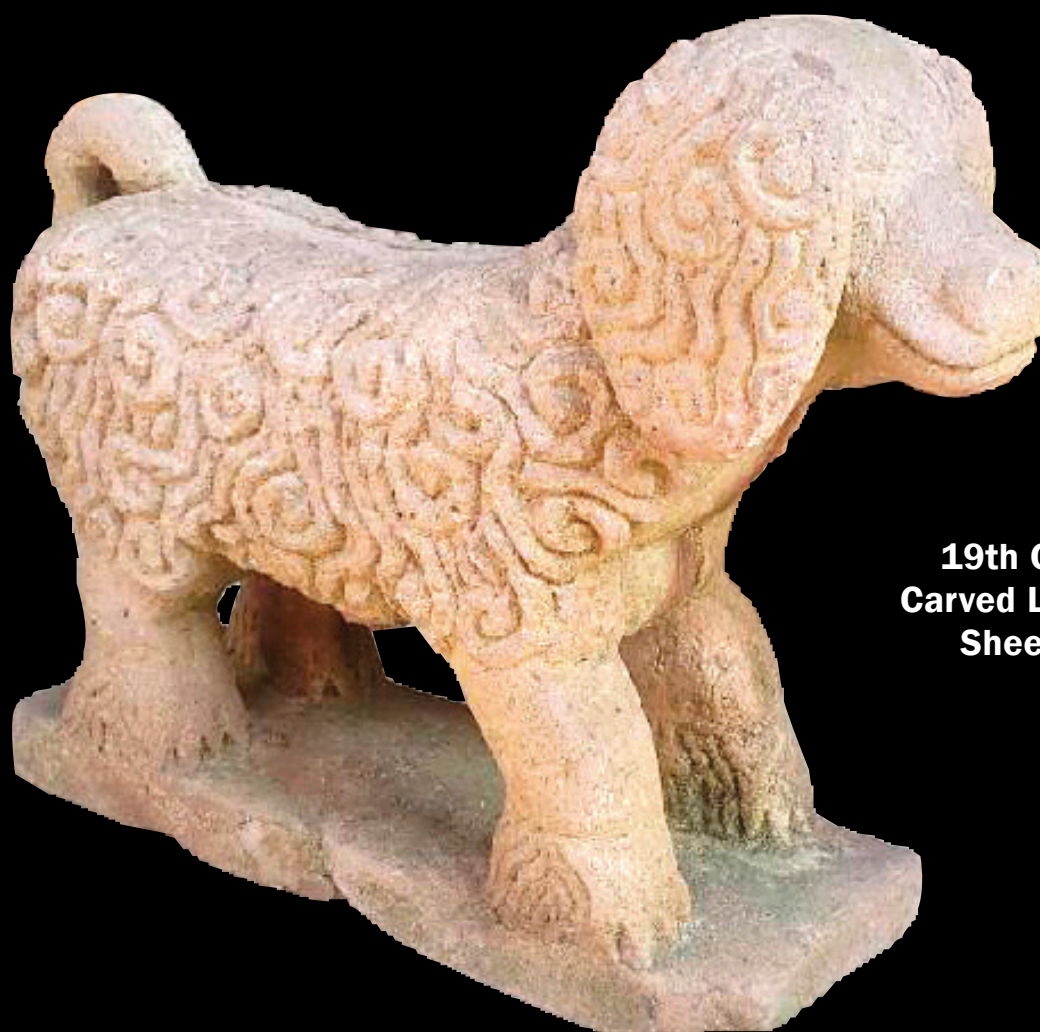


STEPHEN/DOUGLAS, Walpole, N.H. & Rockingham, Vt. — Vibrant yellow smoke decorated slide-lid spice box, Maine, Nineteenth Century.



IAN MCKELVEY, Columbia, Conn. — Hanging spice safe.

[nhada.org](http://nhada.org)



19th Century  
Carved Limestone  
Sheep Dog

Ian McKelvey Antiques 860-781-0081





## Hollis E. Brodrick

### Arts & Artifacts of Early New England



Rare early American chandelier in untouched condition, with turned wooden hub in original surface.

Rare and important, Pro-Revolutionary “MASSACHUSETTS SPY” newspaper with masthead engraved by PAUL REVERE. Issue for May 17, 1775 days at top “Americans!—Liberty or Death!—Join or Die!”



Part of a fairly large selection colonial furniture- most- fresh to the market, out of old collections, and in old surface or paint

A selection of exceptional 18thC metalware- including 2 rare, octagonal base, wedding band hogscrapers by maker Thomas Lakin- c1720's to 1750's, 18thC American copper teakettle w/ cast, swivel handle marked “BOSTON”, several colonial American pipe tongs- one engraved- c1725- 1760



A selection of early ceramics as used in colonial America- including part of a collection of 18thC wig curlers





# THE 68<sup>TH</sup> ANNUAL New Hampshire Antiques Show

**SPECIAL  
SHOW  
SECTION**



IAN MCKELVEY, Columbia, Conn. — Rare Eighteenth Century scrub box.

STEVEN F. STILL ANTIQUES, Manheim, Penn. — Walter C. Arndt trade sign. This wood sign, from the second half of the Nineteenth Century, retains the original painted surface, 27¼ by 36 inches.



GARTHOEFFNER GALLERY ANTIQUES, Lititz, Penn. — Four decorated covered treenware containers.



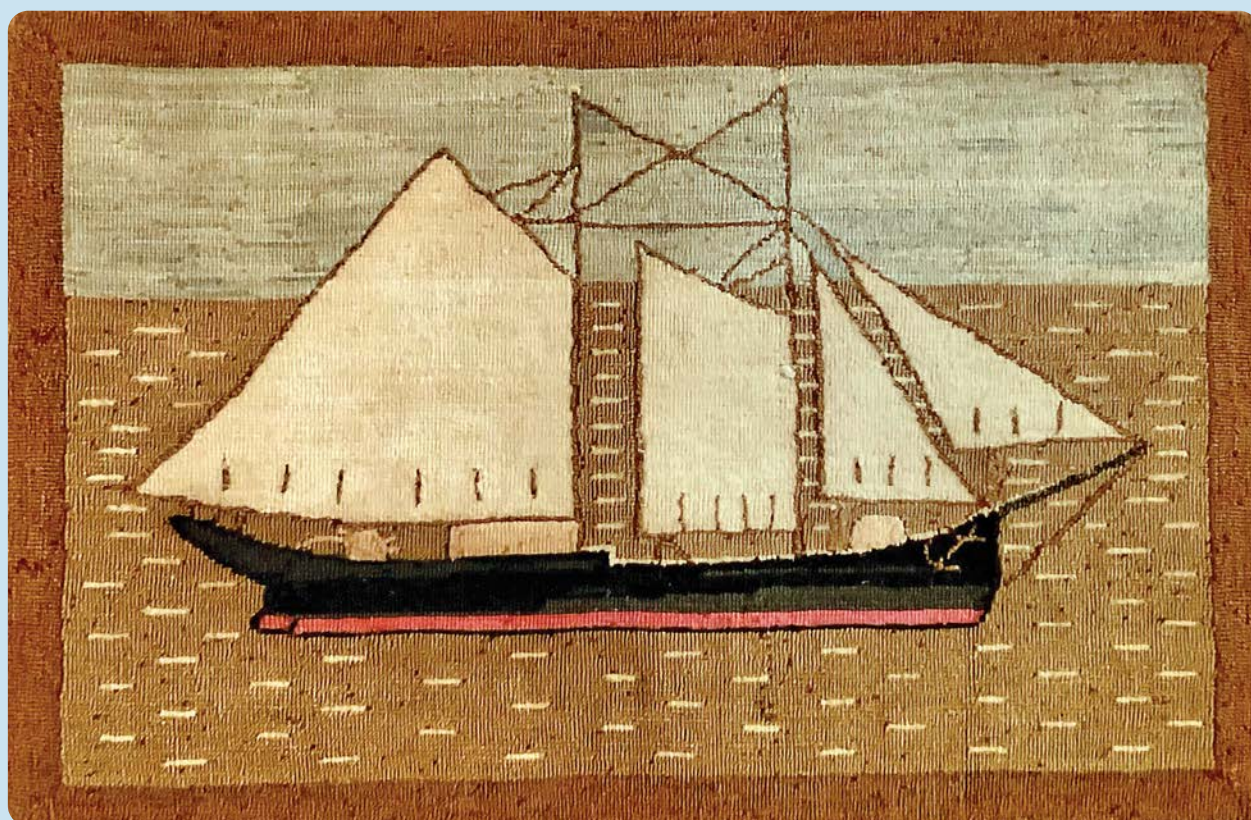
STEPHEN/DOUGLAS, Walpole, N.H. & Rockingham, Vt. — Chalkware cat, American, Nineteenth Century, 7-3/8 inches high.



## Pewter & Wood Antiques

Barbara Boardman Johnson Enfield, NH (602) 677-5686

**BOOTH #7**



Grenfell, professionally mounted on frame, 26-3/4" wide x 17-3/4" high. Early 1900's.



**SPECIAL  
SHOW  
SECTION**

# THE 68<sup>TH</sup> ANNUAL New Hampshire Antiques Show



**NATHAN LIVERANT & SON, Colchester, Conn.** — Folk art carving of a rainbow trout, American, 1920-45, inscribed in pencil: "Made by E. L. Whitam, J. D. MacLaughlin."

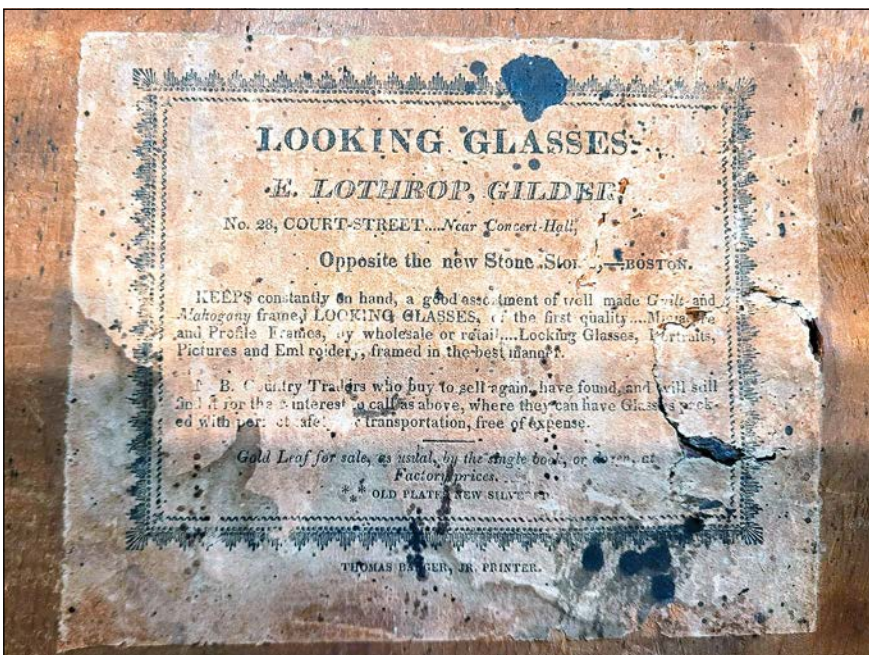


*The 68th Annual  
New  
Hampshire  
Antiques  
Show*



**THOMAS M. RAWSON ANTIQUES, Cedar Rapids, Iowa** — Buff pottery bulldog with Rockingham embellishments.

**MEAD AMERICANA, Ambler, Penn.** — American Revolution-era cartridge box with an 18-hole wooden block, buff leather strap and cast brass triangle clasp. This type is known today as the "Ipswich" style, based on provenanced examples from Cape Ann, Mass.



**DEWOLFE & WOOD RARE BOOKS, Alfred, Maine** — A fine Chipendale mirror with the label for the maker E. Lathrop of Boston, Mass.



**Tall Case Clock  
by Samuel Ranlet  
Monmouth, Maine**

Mahogany tall case clock with works by Samuel Ranlet (1780-1860) of Monmouth, with a case made by his brother in law, Jacob Miller and a dial attributed to Spencer Nolan of Boston. Ranlet was known for his finely crafted brass movements. Circa 1810; 95" high.

## KELLY KINZLE

[www.kellykinzleantiques.com](http://www.kellykinzleantiques.com)

[kelly@kellykinzleantiques.com](mailto:kelly@kellykinzleantiques.com)

717-495-3395







# THE 68<sup>TH</sup> ANNUAL New Hampshire Antiques Show

SPECIAL  
SHOW  
SECTION



VILLAGE BRAIDER, Plymouth, Mass. — Large Nineteenth Century American bee skep, 21 inches high.



KELLY KINZLE, New Oxford, Penn. — Portrait of the brig *Roman de Ajuria* in full sail by the artist Jacob B. Knight.

[nhada.org](http://nhada.org)



GARTHOEFFNER GALLERY  
ANTIQUES, Lititz, Penn. — Schuco Charlie Chaplin, a windup "walker" with original key.

August 7 – 9, 2025

THURSDAY & FRIDAY:

10AM – 7PM

SATURDAY: 10AM – 4PM

JOHN HUNT MARSHALL, Westhampton, Mass. — Delft tobacco jar, circa 1750.



JEWETT-BERDAN ANTIQUES, Newcastle, Maine — A wonderful pair carved wooden bovine and horse in original paint, circa 1900.



## TUCKER FREY ANTIQUES



Some good  
classic objects  
I'll be bringing  
to Manchester

256 MAIN STREET SOUTH  
WOODBURY, CT 06798  
(203) 263-5404  
TFREY90549@AOL.COM  
OPEN WED-SUN 11-4



# *Damn right we've got the blues!*



Selections from our ever-changing inventory of Early American Glass

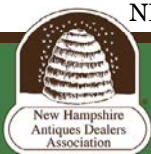
**BOOTH #32**

## Jeff and Holly Noordsy

18 Route 74, Cornwall, VT

[www.noordsyantiques.com](http://www.noordsyantiques.com) • [jeffnhol@gmail.com](mailto:jeffnhol@gmail.com) • 802-462-2901





# THE 68<sup>TH</sup> ANNUAL New Hampshire Antiques Show

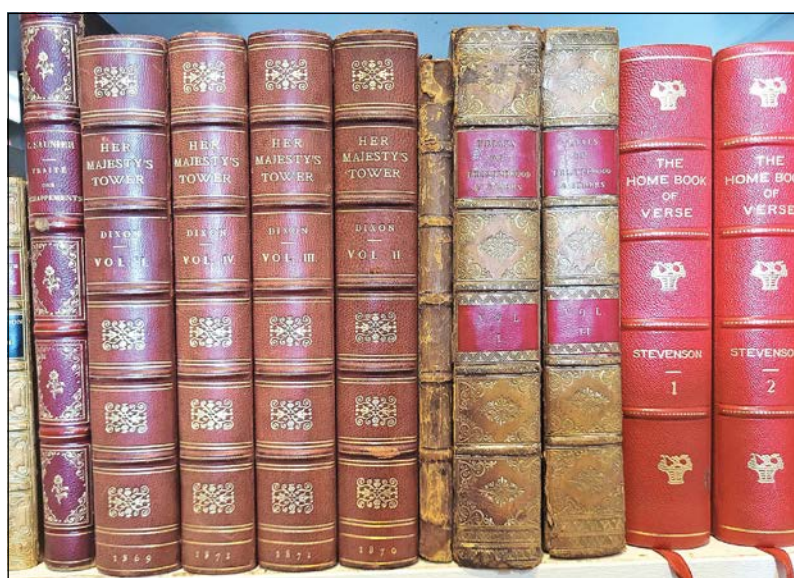
**SPECIAL  
SHOW  
SECTION**



**STEPHEN/DOUGLAS, Walpole, N.H. & Rockingham, Vt. —** Rare ceramic ware blue edge Leeds plate with depiction of General Lafayette reading "Welcome to the land of Liberty" and a bold, colorful mocha ware shaker.



**BOB JESSEN & JIM HOHNWOLD, Fitzwilliam, N.H. —** Grouping of three Nineteenth Century velvet fruit pin cushions.



**JEFF & HOLLY NOORDSY ART & ANTIQUES, Cornwall, Vt. —** Beautifully constructed Nineteenth Century hanging basket. Ex Pat Garthoeffner.

[nhada.org](http://nhada.org)

**DEWOLFE & WOOD RARE BOOKS, Alfred, Maine —** A fine collection of rare books.



**J&G ANTIQUES, Amityville, N.Y. —** Copper downspout with a bronze eagle, dated 1799.

A FAMILY TRADE SINCE 1960

## Bittner Antiques

SHELBURNE, VT

Joseph Frederick Wallet Des Barres

Buzzards Bay, Martha's Vineyard, Nantucket Island

From The Atlantic Neptune, London, 1779

Copperplate engraving, 44 x 30 inches

Visit our showroom: Wed-Fri 10am-4pm | 2997 Shelburne Road, Shelburne, VT 05482

802.489.5210

[www.bittnerantiques.com](http://www.bittnerantiques.com)

[info@bittnerantiques.com](mailto:info@bittnerantiques.com)

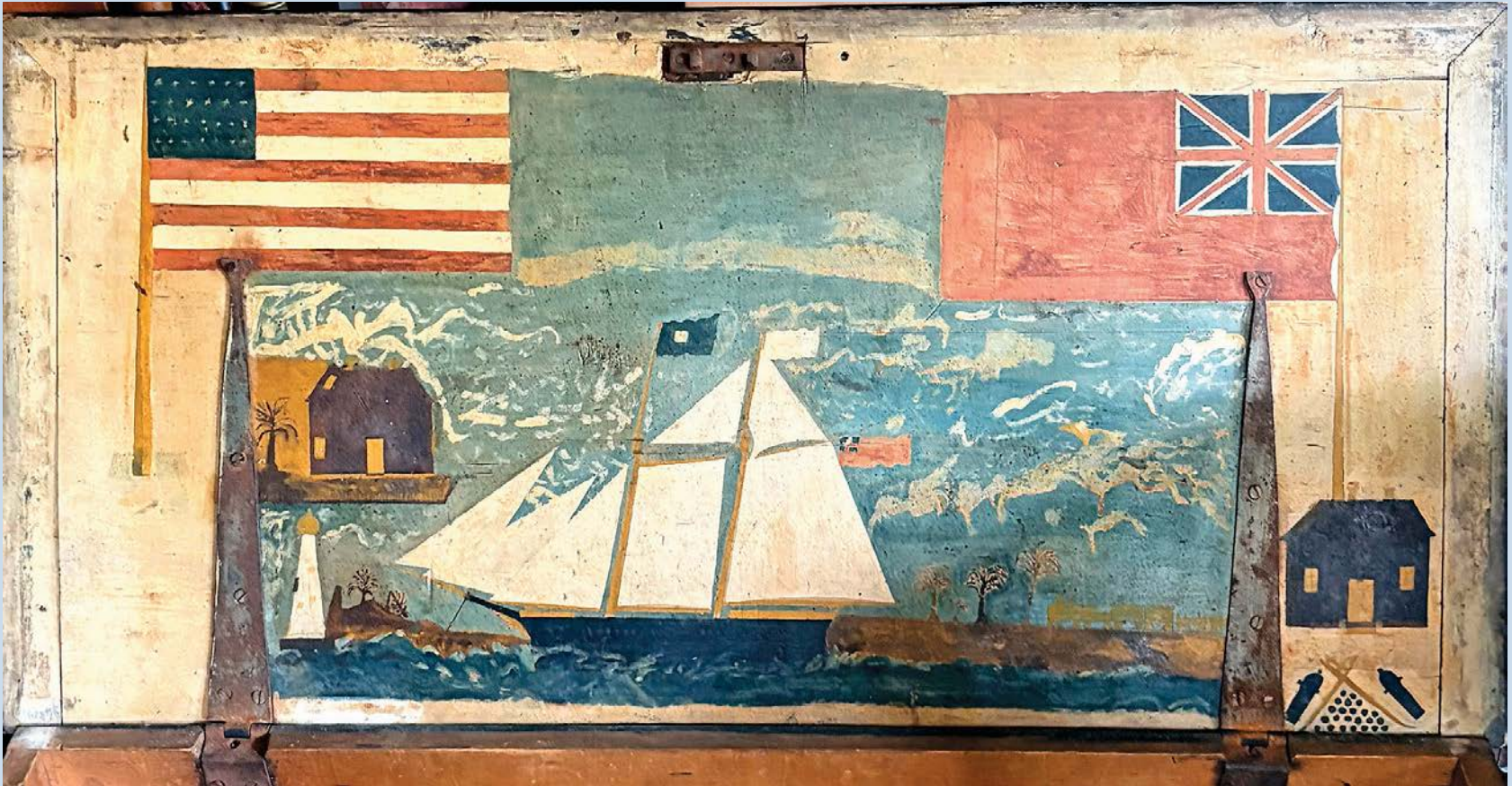


SPECIAL  
SHOW  
SECTION

THE 68<sup>TH</sup> ANNUAL  
New Hampshire Antiques Show



# STEPHEN / DOUGLAS



*Interior of the lid of a sailor's chest, ca. 1850.*



*Fine New England 18th century  
banister back armchair, old,  
probably original surface -  
2 associated side chairs from the  
same workshop available*



*Large American sheet iron rooster weathervane,  
great old polychrome painted surface,  
ca. late 19th century. 32" high.*



*Carved wooden Scotsman  
tobacconist figure,  
mid-19th century. Wonderful  
original paint and surface.  
28 1/2 " high.*

Walpole, New Hampshire

603-903-5023

Rockingham, Vermont





# THE 68<sup>TH</sup> ANNUAL New Hampshire Antiques Show

SPECIAL  
SHOW  
SECTION



NANCY & GENE PRATT, Victor, N.Y. — Small wallpaper-covered box with vibrant color, wallpaper over wood, dates to the mid Nineteenth Century, 4-5/8 inches wide by 4 inches high by 4-5/8 inches deep.

STEVEN F. STILL ANTIQUES, Manheim, Penn. — Large mid Nineteenth Century chalkware cat with the original smoke decoration, 15½ inches tall, found in Pennsylvania.



SPENCER MARKS, Southampton, Mass. — Mortimer & Hunt pair of English sterling silver antique wine coasters, London, 1841/42.



HOLLIS BRODRICK, Portsmouth, N.H. — Early domestic objects, including a large leather blackjack, an Eighteenth Century firkin with rose head tacks and a finely shaped wall box, both in early paint.

JUDITH & JAMES MILNE/AT HOME ANTIQUES, Kingston, N.Y. — Carved wood plaque depicting an owl sitting on a leafy branch, 14 by 29 inches.



## Douglas R Wyant Antiques

920 E State Street | Cassopolis, MI 49031 | 269-214-6354



# Folk Art Carving

"Cigar Store Indian"

As found, Untouched Condition

Poly Chrome Paint

Anonymous

c. 1890-1910

6"d x 8" w x 23" t



Michael Whittemore  
Antiques & Folk Art



980 Coronado Drive  
Punta Gorda, Florida 33950  
860-428-1135





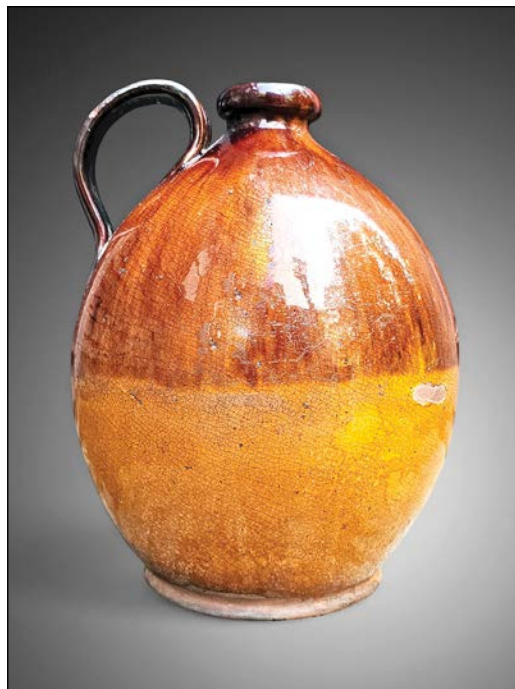
# THE 68<sup>TH</sup> ANNUAL New Hampshire Antiques Show

SPECIAL  
SHOW  
SECTION



RESSER-THORNER AMERICANA, Manchester, N.H. — Yankees owner Jacob Ruppert, Jr.'s, silver and enamel cigarette case dated "1898," 2¾ by 3½ inches. From the collection of Rex Stark.

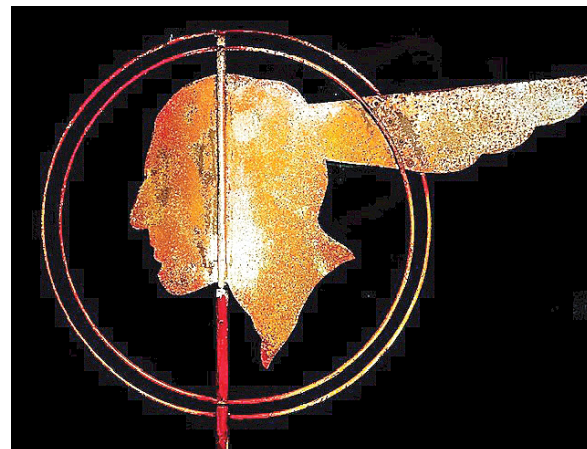
JEWETT-BERDAN ANTIQUES, Newcastle, Maine — Pontiac weathervane trade sign in great old paint and surface.



BOB JESSEN & JIM HOHNWOLD, Fitzwilliam, N.H. — Scarce late Eighteenth Century redware jug attributed to John Henry Benner.

*The 68th Annual  
New Hampshire  
Antiques Show*

HOLLIS BRODRICK, Portsmouth, N.H. — Rare Eighteenth Century (circa 1750s-70s) wedding band hogscraper candlestick and wrought iron snuffer, both signed by the same maker: "Hidson."



## HERCULES J. PAPPACHRISTOS

ART & ANTIQUES

(603) 548-5959 herculesderry@comcast.net



Sawbuck potting table, 19th century, in old bittersweet and white paint.

Height 30" | Width 50 1/2" | Depth 24"



## Christopher and Bernadette Evans Antiques Folk Art and Country Americana



**A Perfectly Imperfect Pair!**

**Now Booth 31; [www.candbevansantiques.com](http://www.candbevansantiques.com)**

**[cevans62@yahoo.com](mailto:cevans62@yahoo.com)**

**(240)-818-7810**





# THE 68<sup>TH</sup> ANNUAL New Hampshire Antiques Show

SPECIAL  
SHOW  
SECTION



**JEFF & HOLLY NOORDSY ART & ANTIQUES**, Cornwall, Vt. — Dixville, Maine, family record wrought by the Heart and Hand artist, circa 1855.



**BOB JESSEN & JIM HOHN-WOLD**, Fitzwilliam, N.H. — Nineteenth Century treen spill holder in original mustard paint.

*The 68th Annual  
New Hampshire  
Antiques Show*



**MATTHEW EHRESMAN ANTIQUES**, Wadsworth, Ohio — Early iron rooster windmill weight, 19 by 17 inches.



**J&G ANTIQUES**, Amityville, N.Y. — Oil on canvas winter scene of a horse-drawn sleigh with a man holding his small dog.



**PETER SAWYER ANTIQUES**, Exeter, N.H. — "Glimpse of the Village, Scene on the Saco River" by Edmund Darch Lewis, 1871.



## Teach your children

A rare survivor. A stitched leather hornbook with alphabet on vellum with a thin slice of horn covering.  
England or New England, 1700-1750.  
Found in NH home.

**Withington & Company  
Antiques**

2 Old County Road, Cape Neddick, Maine 03902  
Instagram: @withingtonantiques • Tel: 603.498.4778



## MEAD AMERICANA

*Ambler, Pennsylvania*

BOOTH 24



Stevens, J[ohn], artist; [John] Brooks, engraver. "A View of the Landing of the New England Forces in ye Expedition against CAPE BRETON, 1745." London: John Bowles, (1745/ third state, ca.1768-1779) A rare near-contemporary view of the audacious and successful siege of the French Fortress Louisbourg by provincial forces of New England under William Pepperell supported by a British fleet under Admiral Peter Warren. 14.75" x 20.5"



18thc. New England "half wagon wheel" saber with a delicate heart shape in the guard, Revolutionary Era. The blade has no fuller and may be American made. Overall lg. 36"



French and Indian War powder horn of Dunham Pettit, dated at Crown Point in 1761. Carved with a streetscape and vines and inscribed "Dunham Pettit, his horn made/At Crown Point Octobr ye 19th 1761 Given him by his/Brother John Pettit shen this you see Remember me/Steal not this horn for Fear of Shame for on it is The owners name Dunham Pettit his horn." This horn was likely engraved by the same carver as the "Gershom Prince" horn, now at the Luzerne County Historical Society. Overall lg. 13 3/4"



New England Lion Head (or "monkey head") horseman saber, Revolutionary Era. Three nearly identical examples were found in an attic in Elliot, Maine decades ago. See William Guthman, "Colonial Swords of New England: Part I, Man at Arms, Sept/October 1982 page 38. Overall lg. 36"





THE 68<sup>TH</sup> ANNUAL  
New Hampshire Antiques Show

SPECIAL  
SHOW  
SECTION

# Jewett-Berdan



A 12-candle wooden Angel Chandelier Erzgebirge Germany, circa 1920...  
In the original poly-chrome paint and best dry old surface...

**Booth #47**

**Charles P. Berdan**

15 Hopkins Hill Road  
Newcastle, Maine 04553

[jewett-berdan@roadrunner.com](mailto:jewett-berdan@roadrunner.com)

[www.Jewett-Berdan.com](http://www.Jewett-Berdan.com)

(207) 563-3682

**Thomas J. Jewett**





# Jewett-Berdan



One-of-a-kind hand blocked Patriotic paper and wooden box for  
The Grand Army of the Republic founded in 1866 in Decatur, Illinois....  
Made for when Utah became the 45th State on July 4th 1896.....  
Most likely made to hold a Civil War hat or uniform

Charles P. Berdan



15 Hopkins Hill Road  
Newcastle, Maine 04553  
jewett-berdan@roadrunner.com  
www.Jewett-Berdan.com  
(207) 563-3682



Thomas J. Jewett





# THE 68<sup>TH</sup> ANNUAL New Hampshire Antiques Show

SPECIAL  
SHOW  
SECTION

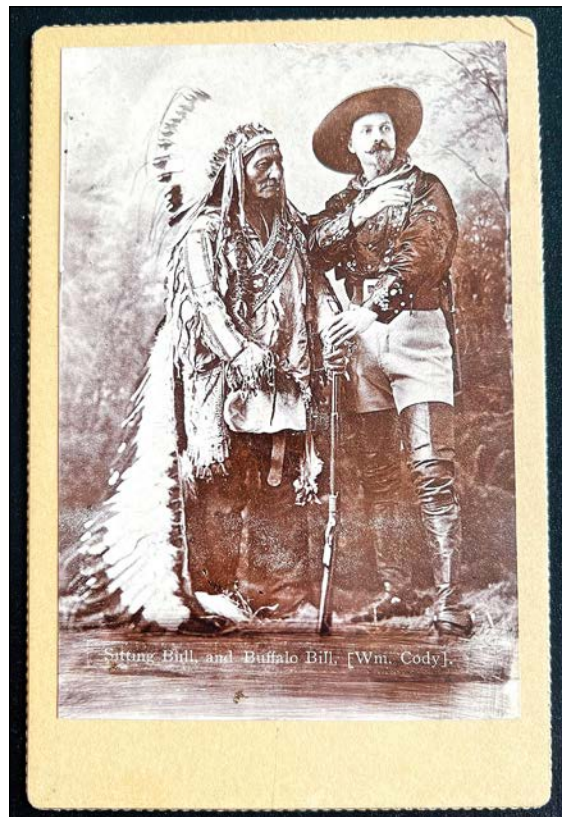


PERIOD TO MOD/BRENNAN & MOUILLE-  
SEAUX ANTIQUES & DESIGN, Briarcliff  
Manor, N.Y. — A circa 1870 rustic pattern cast  
iron settee.

**August 7 – 9, 2025**

THURSDAY & FRIDAY: 10AM – 7PM

SATURDAY: 10AM – 4PM



RESSER-THORNER AMERICANA, Manches-  
ter, N.H. — Nineteenth Century cabinet card  
of Sitting Bull and Buffalo Bill, 4¼ by 6½ inches,  
backmark of W.R. Cross of Hot Springs, S.D.  
From the collection of Rex Stark.



ROBERT BURGER, Mount Vernon, Ohio —  
Rare Gibbs Armadillo trap.



RANDI ONA ANTIQUES, Wayne, N.J. — A very  
fine theorem on velvet, circa 1835.



KELLY KINZLE, New Oxford, Penn. — Highly  
figured paint decorated chest of drawers  
from Maine, circa 1820.

## Bob Jessen & Jim Hohnwald



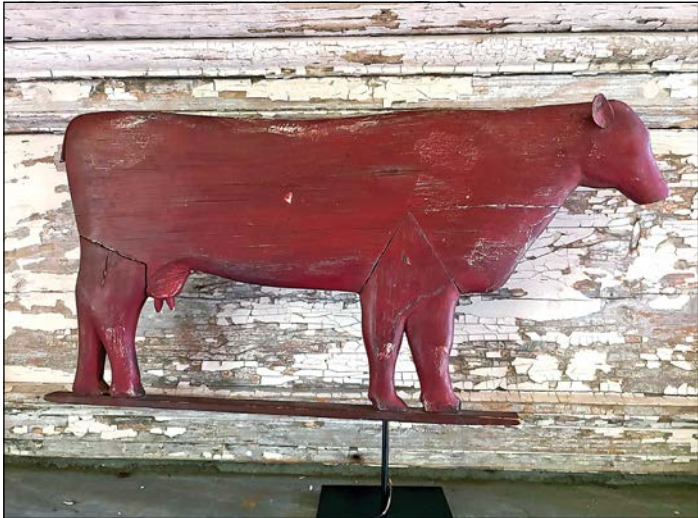
An eccentric and wonderfully colorful theorem on velvet displaying a beautifully presented array of fruit on a tin  
tray. Ca 1860. 26 1/4"W x 21 3/4"T

Fitzwilliam, NH | 603-585-9188 | Booth 27



**SPECIAL  
SHOW  
SECTION**

# THE 68<sup>TH</sup> ANNUAL New Hampshire Antiques Show



**JUDITH & JAMES MILNE/AT HOME ANTIQUES, Kingston, N.Y.** — Carved wood cow in a barn red painted surface, 17 by 22 inches.

**JEFFREY TILLOU ANTIQUES, Litchfield, Conn.** — Rare Federal carved gilt eagle wall mount, American, New England, circa 1800-20, pine, gesso, gilt. Overall in fine condition, minor imperfections, retaining most of its original gilt, iron straps on verso, 15 inches high by 25½ inches wide by 8½ inches deep.

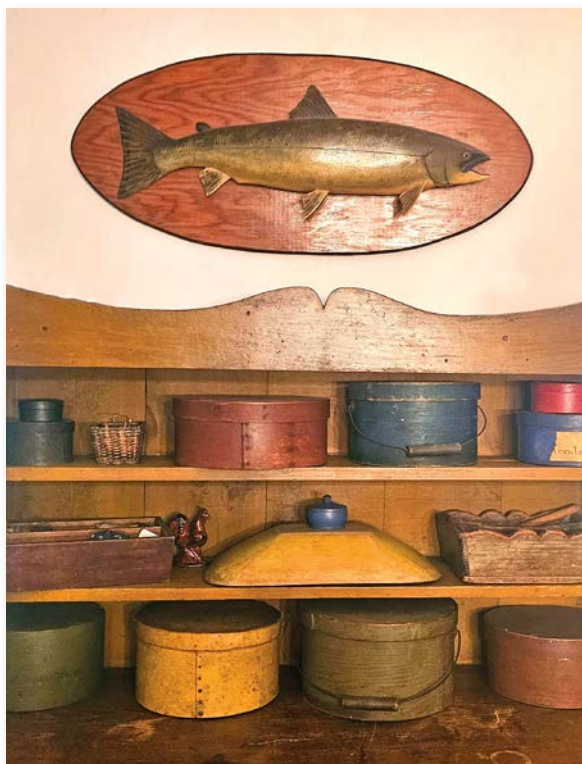


**NANCY & GENE PRATT, Victor, N.Y.** — Woodlands Indian effigy ladle of unusual design with a carved heart on the top portion of the handle, maple, circa 1850, 9½ inches max length.



**PEWTER & WOOD ANTIQUES, Enfield, N.H.** — Collection of painted smalls and lighting.

**RESSER-THORNER AMERICANA, Manchester, N.H.** — Rare American 1750 mezzotint by Peter Pelham of The Rev. Henry Caner (1700-1793), 9¾ by 14 inches (sight). Caner was the last Anglican minister of King's Chapel (Boston) who, as a Loyalist, evacuated the city in 1776.



19th Century Collection of Painted Smalls. Above is a carved & decorated Fish by Lawrence Irving, Winthrop, Maine.

19th Century Horse Folk Hooked Rug. Professionally Mounted. 40" Wide 36" High.



**NEWSOM & BERDAN  
ANTIQUES & FOLK ART**  
860-558-3282 • [newsomberdan@aol.com](mailto:newsomberdan@aol.com)  
Thomasville, Pennsylvania by Appointment  
Michael Newsom • [www.newsomberdan.com](http://www.newsomberdan.com)







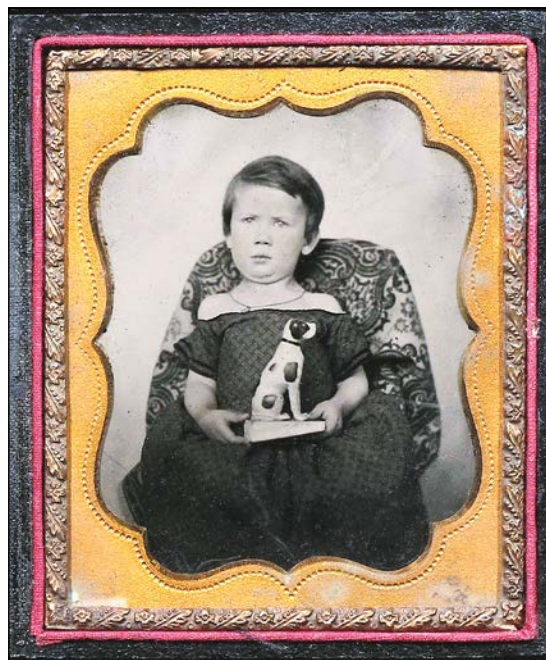
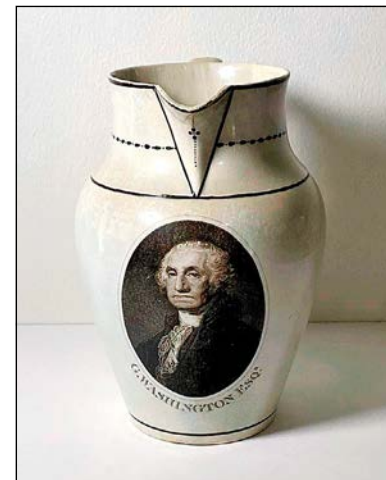
# THE 68<sup>TH</sup> ANNUAL New Hampshire Antiques Show

SPECIAL  
SHOW  
SECTION



**J&G ANTIQUES**, Amityville, N.Y. — The Salem barque *Ceres*, 1855, gouache and ink on paper, inscribed "Barque *Ceres* Thos. E. Smith master entering the Port of Genoa."

**WILLIAM R. & TERESA F. KURAU**, Collegeville, Penn. — Staffordshire creamware Liverpool Herculaneum pitcher with transfer of "G. Washington Esq.," which was taken from the famous Gilbert Stuart painting. It measures 7 inches tall and dates to circa 1800. We will have a fine selection of George Washington and General Lafayette items at the show.



**DAVID THOMPSON ANTIQUES & ART**, South Dennis, Mass. — Charming ambrotype of little boy holding a dog squeak toy, 1856-60, sixth plate size, excellent condition with original case. Dimensions overall, including case: 3½ by 3¾ inches. Found in Massachusetts. A nice find for the squeak toy collector.



**HOLLIS BRODRICK**, Portsmouth, N.H. — Wonderful Eighteenth Century pipe box in as-found, untouched condition. From the Roger Bacon Collection and pictured in the catalog when his famous collection was sold over 40 years ago!



**PERIOD TO MOD/BRENNAN & MOUILLE-SEAUX ANTIQUES & DESIGN**, Briarcliff Manor, N.Y. — A circa 1890 picture framer's tin trade sign.

## MELISSA ALDEN ~Antiques~ PORTSMOUTH, NEW HAMPSHIRE



Email: [mscarterportsmouth@gmail.com](mailto:mscarterportsmouth@gmail.com) • Tel/Text: 603-501-9911



SPECIAL  
SHOW  
SECTIONTHE 68<sup>TH</sup> ANNUAL  
New Hampshire Antiques Show

RANDI ONA ANTIQUES, Wayne, N.J. — Painted pine-framed 24-tube candle mold, circa 1840.



JEWETT-BERDAN ANTIQUES, Newcastle, Maine — Early cloth rag doll and China head doll in original clothing, mid Nineteenth Century.



[nhada.org](http://nhada.org)

OLDE HOPE, New Hope, Penn. & New York City — Large bandbox by Hannah Davis (1784-1863), Jaffrey, N.H., circa 1840, bent wood with pineapple pattern wallpaper covering and dated newspaper lining, bearing label on underside of lid "Warranted Nailed Band Boxes; made by Hannah Davis, Jaffrey, N.H.," 15 inches high by 18 3/4 inches long by 14 inches wide.

DEWOLFE & WOOD RARE BOOKS, Alfred, Maine — A framed set of six Vermont Glass Factory bank notes all dated 1814.



JUDITH & JAMES MILNE/AT HOME ANTIQUES, Kingston, N.Y. — Sheet iron horse and rider retaining an old painted surface, 12 by 20 inches.



PRESCOTT, HILL & SMITH.  
Candia, New Hampshire, 1859-1860.  
Historic hand-tinted ambrotype, of the Prescott, Hill & Smith establishment as large, painted sign indicates. Nine people are posed out front. "Candia, N.H." and six people are identified on paper behind image, including members of Prescott and Smith families. Sixth-plate size. Genealogical and other information will be provided to the purchaser.

DAVID THOMPSON  
ANTIQUES & ART

David Thompson Jane Turano-Thompson  
802-238-6987 dtjt@sover.net  
South Dennis, MA







# THE 68<sup>TH</sup> ANNUAL New Hampshire Antiques Show

SPECIAL  
SHOW  
SECTION



**RANDI ONA ANTIQUES, Wayne, N.J.** — Pair of Black cloth dolls, circa 1890, with wonderful embroidered and applied features.



**VILLAGE BRAIDER, Plymouth, Mass.** — Nineteenth Century Adirondack landscape with two figures, oil on board, sight size: 14 by 18 inches.



**KELLY KINZLE, New Oxford, Penn.** — Banjo clock with beautiful carving by James Cary of Maine, circa 1840.



**OLIVER GARLAND, Falmouth, Mass.** — Rare Seventeenth Century Italian turquoise and manganese Savona charger.

*The 68th Annual*  
New Hampshire Antiques Show

**August 7 – 9, 2025**

THURSDAY & FRIDAY: 10AM – 7PM

SATURDAY: 10AM – 4PM

OLDE  
HOPE

AMERICAN FOLK &  
DECORATIVE ARTS  
OF DISTINCTION

**OldeHope.com**

215-297-0200

info@oldehope.com

📍 115 East 72nd St, 1B  
New York, NY 10021

📍 PO Box 718,  
New Hope, PA 18938





SPECIAL  
SHOW  
SECTION

# THE 68<sup>TH</sup> ANNUAL New Hampshire Antiques Show



**MEAD AMERICANA**, Ambler, Penn. — Circa 1777-78 invitation to "Lt. Col. [Persifor] Fraizer, 5 Pennya" to dine with Washington: "General Washington's compliments wait on Lt. Col. Fraizer beg the favor of His company at dinner today at 3 o'clock Saturday Morning." Fraizer was captured during the Philadelphia campaign, and his wife, Polly, snuck a letter from him to Washington out of prison, instigating a controversy over British treatment of American POWs.



**RESSER-THORNER AMERICANA**, Manchester, N.H. — Rare polychromed child's plate depicting President Zachary Taylor, 4 3/4 inches in diameter. From the collection of Rex Stark.

[nhada.org](http://nhada.org)



**JEWETT-BERDAN ANTIQUES**, Newcastle, Maine — Detail close-up of a schoolgirl watercolor on paper of Mount Vernon, circa 1840.



**J&G ANTIQUES**, Amityville, N.Y. — This Portsmouth, N.H., armchair, circa 1765-75, was in *Portsmouth Furniture*, pages 319 and 325.

**OLDE HOPE**, New Hope, Penn. & New York City — Harlequin Spinner shooting gallery target, H. C. Evans & Company or Emil R. Hoffman & Son, Chicago, circa 1925, cast iron retaining traces of painted finish, 20 1/2 by 10 inches.



Rare American 19th Century  
Paint Trade Sign



## ZIEBARTH'S GALLERY

The Trusted Source  
For Important  
Objects of Art

P: 608.604.8493  
E: [info@ziebarths.com](mailto:info@ziebarths.com)  
W: [www.Ziebarths.com](http://www.Ziebarths.com)



Navajo Germantown Eye Dazzler  
Saddle Blanket





# THE 68<sup>TH</sup> ANNUAL New Hampshire Antiques Show

SPECIAL  
SHOW  
SECTION



**OLDE HOPE**, New Hope, Penn. & New York City — Hanging shelf with drawer, Pennsylvania, dated "1873," pine retaining an old mustard paint and varnished walnut drawer with original knob, 15¼ inches high by 19½ inches wide by 5¼ inches deep.



**BAKER & CO ANTIQUES**, Delmar, N.Y. — Three pieces of Nineteenth Century stoneware, all of New York State origin, and all with a chicken pecking corn motif in cobalt decoration.



**CHRISTOPHER & BERNADETTE EVANS ANTIQUES**, Waynesboro, Va. — Early Nineteenth Century slip-decorated redware plate, 10½ inches in diameter.



**VILLAGE BRAIDER**, Plymouth, Mass. — Twelve-inch-tall lead owl by Henry Crowther.



**DOUGLAS R WYANT ANTIQUES**, Cassopolis, Mich. — Velvet Memorial.

[nhada.org](http://nhada.org)

## Robert Burger



Rare Double Fish Model



Sporting  
Paintings  
Collectibles  
& Folk Art



E.C.Pope - Great Lakes; Howard Sprague artist



Owl Carving  
(exSnyder collection)



Pair of Henry Stull Racehorse Oil on canvas



19th C.Carved and Gold leaf  
Fighting Cock (exSnyder collection)

PO Box 765, Mt Vernon, Ohio 43050 | Cell 614-560-7431 | [burgerent@gmail.com](mailto:burgerent@gmail.com)

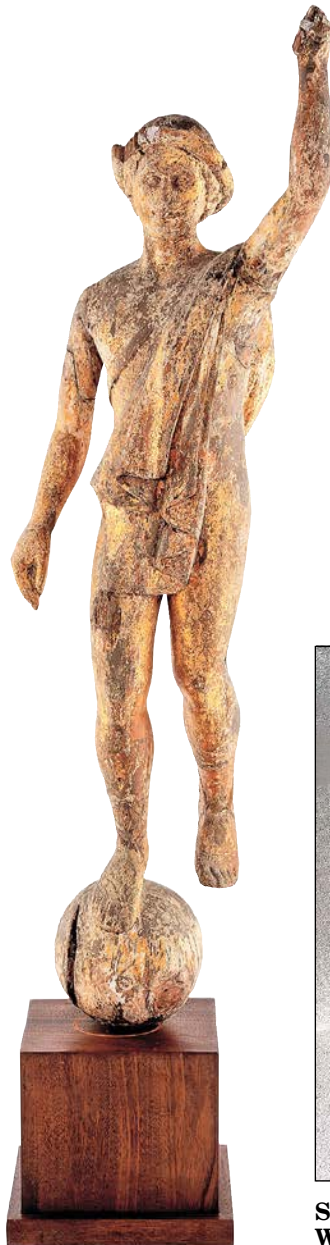


**SPECIAL  
SHOW  
SECTION**

# THE 68<sup>TH</sup> ANNUAL New Hampshire Antiques Show



**OLDE HOPE**, New Hope, Penn. & New York City — Hooked rug with central potted flower and the central figure framed by a 'hit or miss' border, Northeastern United States, circa 1890, cotton rag on burlap, 42 by 35 1/4 inches, mounted for hanging.



**JUDITH & JAMES MILNE/ AT HOME ANTIQUES**, Kingston, N.Y. — Carved and gilt figure of Mercury dated "86" on the orb, 42 inches high.

**WILLIAM R. & TERESA F. KURAU**, Collegeville, Penn. — This 11 3/4-inch-tall by 9 1/4-inch-wide Staffordshire creamware Liverpool pitcher has polychrome transfers of the "Death of Wolfe" and "The Ship America," as well as a small eagle and shield under the handle and the original owners name with a sailor transfer under the spout. It's very uncommon to find the "Death of Wolfe" transfer in color. We will have a fine selection of Liverpool pieces of American interest at the show.



**STEPHEN/DOUGLAS**, Walpole, N.H. & Rockingham, Vt. — Selection of Whieldon-related wares, Eighteenth Century, England.

*The 68th Annual*  
New Hampshire Antiques Show

**August 7 – 9, 2025**

THURSDAY & FRIDAY: 10AM – 7PM

SATURDAY: 10AM – 4PM

**NANCY & GENE PRATT**  
Victor, NY • 585.330.7203



**MT. VERNON ON THE POTOMAC**

Folk art over-mantel painting with panoramic view.  
Oil on pine panel, ca. 1820-30. 26 x 38-1/2" frame.





# THE 68<sup>TH</sup> ANNUAL New Hampshire Antiques Show

SPECIAL  
SHOW  
SECTION



**CHRISTOPHER & BERNADETTE EVANS ANTIQUES,** Waynesboro, Va. — An early Nineteenth Century South-east Pennsylvania watercolor fraktur, 12 by 13 1/4 inches framed.



**MEAD AMERICANA,** Ambler, Penn. — Early American sliding wooden box with the carved date "Sept. 20. 1783," 5 inches long overall.



**DAVID THOMPSON ANTIQUES & ART,** South Dennis, Mass. — Great owl on books doorstop, 1920-30, marked on back by Boston maker: "Eastern Specialty Co. 68," excellent original paint, with normal wear to high points, 9 1/2 inches high. A wise owl indeed, and a book lover!



**ROBERT BURGER,** Mount Vernon, Ohio — Pair of Floyd Crooks canvasback decoys, illustrated on page 117 of *Michigan Decoys* by Walsh.



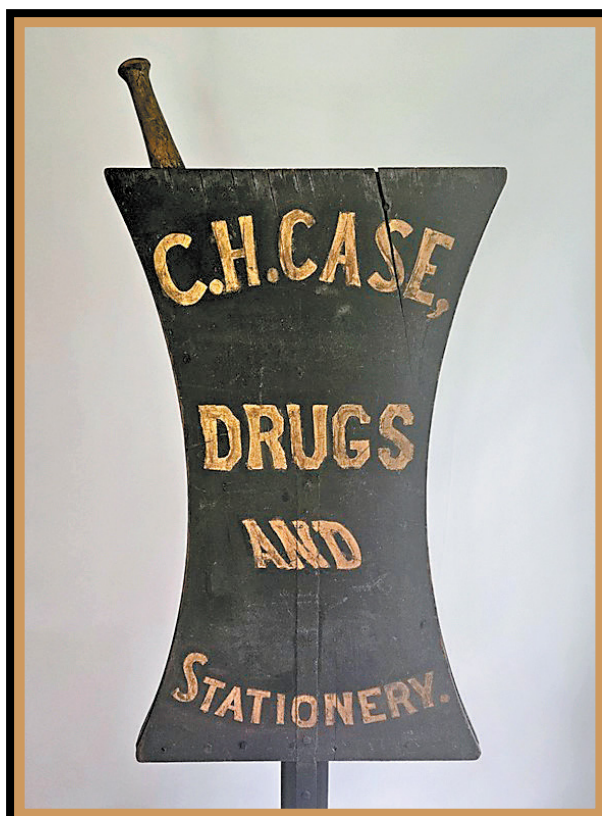
**JEWETT-BERDAN ANTIQUES,** Newcastle, Maine — A vibrant hooked rug dated "1895" with center star and diamond shapes, mounted for hanging.

## THOMAS R. LONGACRE ANTIQUES • FOLKART

[www.thomasrlongacare.com](http://www.thomasrlongacare.com)

**VISIT US IN  
BOOTH  
#3**

**OUR 48<sup>TH</sup>  
NHADA  
SHOW**



**C. H. Case,  
Apothecary  
Trade Sign.**

**Double sided  
and  
professionally  
mounted.**



**SPECIAL  
SHOW  
SECTION**

# THE 68<sup>TH</sup> ANNUAL New Hampshire Antiques Show



**JEFFREY TILLOU ANTIQUES**, Litchfield, Conn. — Queen Anne painted tea table, coastal New England, possibly Long Island, N.Y., maple, dark blue-black paint, overall in great condition, scrubbed top with stains, retaining an early Nineteenth Century painted surface, 26 inches high by 30 inches wide by 25 inches deep. This rare Queen Anne tea table with a notched-corner top above a shaped apron is supported by turned legs ending on pad feet bearing a painted date “1814” to the underside.

[nhada.org](http://nhada.org)



**MEAD AMERICANA**, Ambler, Penn. — Eighteenth Century brass compass with screwed-on lid, engraved face and original paper insert, 2 inches in diameter. Similar examples have been excavated at French and Indian War military sites in New York State. This one has a name “I Hooper” scratched into the cap.



**RESSER-THORNER AMERICANA**, Manchester, N.H. — Rare Black Hawk War (1832) lacquered snuff box depicting the Sauk Chief, his son and the Winnebago Prophet, 3½ inches in diameter. Defects.



**CHRISTOPHER & BERNADETTE EVANS ANTIQUES**, Waynesboro, Va. — Near pair of mid Nineteenth Century Rockingham flint-enameled candlesticks, 8 inches tall.



**PERIOD TO MOD/BRENNAN & MOUILLESEAUX ANTIQUES & DESIGN**, Briarcliff Manor, N.Y. — A high-style Classical period carved mahogany card table, Philadelphia, circa 1825.

## DAVID M. KURAU William R. & Teresa F. Kurau



[WWW.HISTORICALCHINA.COM](http://WWW.HISTORICALCHINA.COM)

P.O. Box 26185, Collegeville, PA 19426  
(717) 314-2676 | email: Lampeter2@yahoo.com







# THE 68<sup>TH</sup> ANNUAL New Hampshire Antiques Show

SPECIAL  
SHOW  
SECTION



**JEWETT-BERDAN ANTIQUES**, Newcastle, Maine — Small-scale watercolor theorem on paper with vibrant colors only measuring 9 by 10 inches framed. We have never seen this size in this format of a theorem circa 1840.



**JEFF & HOLLY NOORDSY ART & ANTIQUES**, Cornwall, Vt. — Nineteenth Century Masonic square and compass with original lemon gilt surface.



**JEWETT-BERDAN ANTIQUES**, Newcastle, Maine — Child's sled with star decoration in original paint with iron swan head returns.

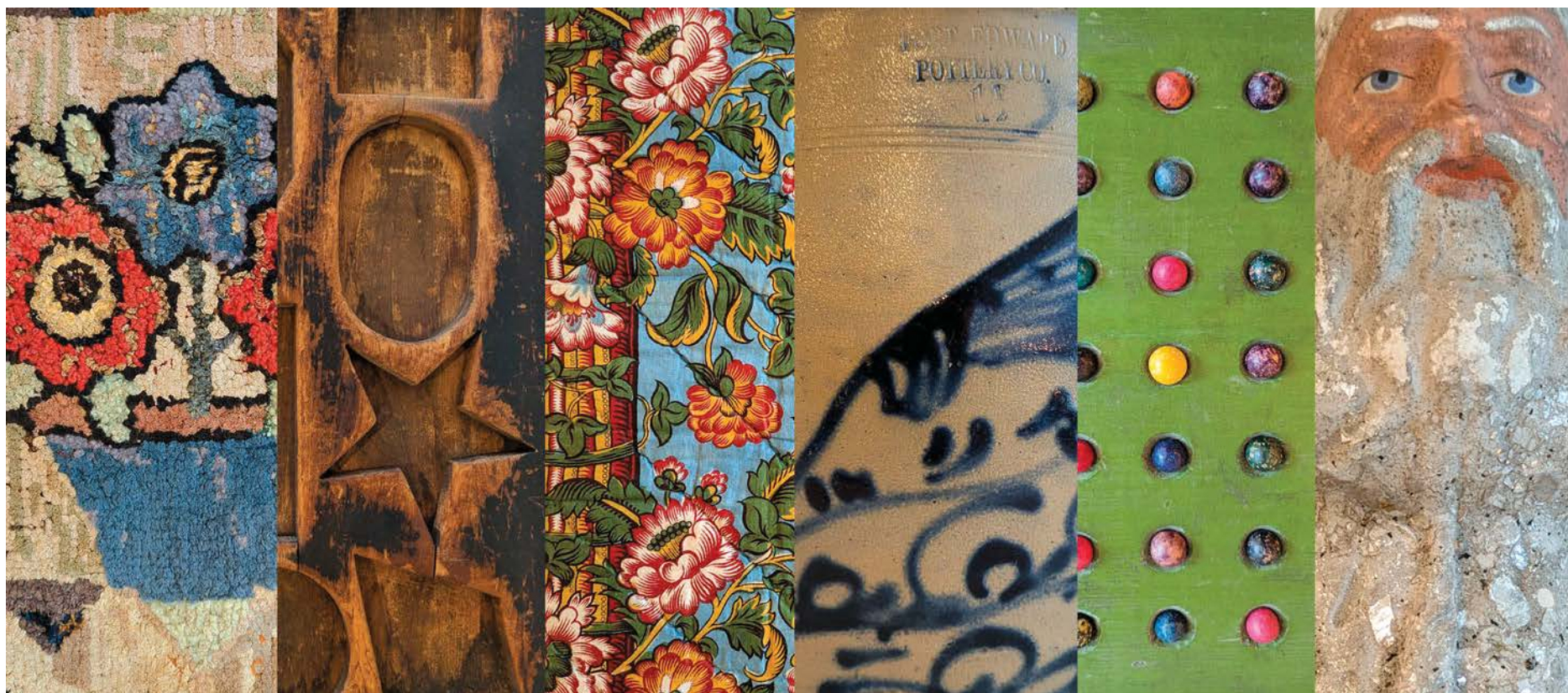


**IAN MCKELVEY**, Columbian, Conn. — Eighteenth Century eastern Connecticut brace-back Windsor chairs.

*The 68th Annual New Hampshire Antiques Show*

**August 7 – 9, 2025**

THURSDAY & FRIDAY: 10AM – 7PM SATURDAY: 10AM – 4PM



## BAKER & Co. ANTIQUES



[BAKERCoANTIQUES.COM](http://BAKERCoANTIQUES.COM)

Tom R. Baker  
Delmar, NY

Booth 60

831.818.8809  
[tom@bakercoantiques.com](mailto:tom@bakercoantiques.com)



SPECIAL  
SHOW  
SECTION

# THE 68<sup>TH</sup> ANNUAL New Hampshire Antiques Show



CHRISTOPHER & BERNADETTE EVANS ANTIQUES, Waynesboro, Va. — Wonderful Nineteenth Century folk art felt mat, 17 by 13½ inches.

[nhada.org](http://nhada.org)



WILLIAM R. & TERESA F. KURAU, Collegeville, Penn. — Historical Staffordshire Boston State House soup tureen by Rogers. Only two of these tureens are known to exist. We will have a fine selection of dark blue historical Staffordshire at the show.



SCOTT BASSOFF | SANDY JACOBS ANTIQUES, Swampscott, Mass. — Memorial pendant, dated "1795," for William Clement who died June 30, Albany, N.Y., area.

*The 68th Annual*  
**New Hampshire  
Antiques Show**



VILLAGE BRAIDER, Plymouth, Mass. — Twentieth Century rack of doll head molds, bronze and iron, from a Brooklyn, N.Y., doll factory.



**NATHAN  
LIVERANT  
AND SON, LLC  
ANTIQUES**

168 SOUTH MAIN STREET  
P.O. BOX 103, COLCHESTER, CT 06415  
(860) 537-2409  
E-mail: [mail@liverantantiques.com](mailto:mail@liverantantiques.com)

Visit us at: [liverantantiques.com](http://liverantantiques.com)  
Follow us at: [instagram.com/liverant.antiques/](https://www.instagram.com/liverant.antiques/)  
[facebook.com/NLS.antiques](https://www.facebook.com/NLS.antiques)



William and Mary maple oval top tavern table with ball and reel turned legs. Coastal Massachusetts, 1725 - 1750





# THE 68<sup>TH</sup> ANNUAL New Hampshire Antiques Show

SPECIAL  
SHOW  
SECTION



DOUGLAS R WYANT ANTIQUES, Cassopolis, Mich. — Horse painting.

ROBERT T. FOLEY ANTIQUES,  
Gray, Maine — Late Eighteenth  
Century diminutive cherry  
wallbox, 10½ by 4¾ inches.



HERCULES J. PAPPACHRISTOS, Derry,  
N.H. — Small Nantucket basket; height  
to rim: 3 inches.



[nhada.org](http://nhada.org)

JEFFREY TILLOU  
ANTIQUES, Litch-  
field, Conn. — Paint  
decorated hanging  
wall box, Pennsylva-  
nia, mid Nineteenth  
Century, pine, poly-  
chrome paint, 7½  
inches high by 13½  
inches wide by 8½  
inches deep. This  
anonymous artist had  
an exceptional talent  
for both stenciling  
and paint decoration,  
depicting mirror  
images of birds.



J&G ANTIQUES, Amityville, N.Y. — Yacht *Alone*. The cabin cruiser *Alone*  
sailed out of New York. The decks can be removed so one can view the for-  
ward and stern cabins.

## PAM & MARTHA BOYNTON ANTIQUES

PENWIPES; VELVET CAT WITH STRIPES, VELVET RABBIT



HIGH BUTTON SHOE NEEDLE HOLDER,



CHARCOAL ON PAPER OF TWO WHITE CATS  
PLAYING WITH A MINIATURE OF IVORY PORTRAIT

RARE MINIATURE STONE  
GRAPES GREEN WITH  
WOODEN STEM



SACKBACK  
WINDSOR  
ARMCHAIR,  
CIRCA 1780



NE ORIGINAL  
BLACK  
PAINT,  
EX: PAM  
BOYNTON

ROUND RED PANTRY BOX, 4.25" DIAMETER,  
SILK INSERT INSIDE COVER,  
ORIGINAL EXCELLENT CONDITION



OIL ON ARTIST BOARD OF A CONTENT YELLOW TIGER CAT,  
ORIGINAL UNTOUCHED CONDITION, 18.5" X 12.5"

PAM & MARTHA BOYNTON 1 GREELY RD. TOWNSEND, MA 01469 • 978-835-5920



**SPECIAL  
SHOW  
SECTION**

# THE 68<sup>TH</sup> ANNUAL New Hampshire Antiques Show



**NATHAN LIVERANT & SON, Colchester, Conn.** — Folk art yarn sewn hearth rug featuring bold floral decoration, New England, circa 1800-1825, wool chenille on a linen ground.

**ROBERT BURGER, Mount Vernon, Ohio** — Pair of 33-inch-long Northwest Coast paddles.



*The 68th Annual*  
New Hampshire Antiques Show  
**August 7 – 9, 2025**  
THURSDAY & FRIDAY:  
10AM – 7PM  
SATURDAY: 10AM – 4PM



**IAN MCKELVEY, Columbia, Conn.** — Two-dimensional Nineteenth Century advertising cigar store Native American figure.



**GARTHOEFFNER GALLERY ANTIQUES, Lititz, Penn.** — Terrier hooked rug, circa 1930, wool on burlap, 56 by 32 inches.



THE TIP OF THE ICEBERG

*period to mod*

BRENNAN & MOUILLESEAU

860.480.8282 / 860.480.4804

TBRENNAN296@GMAIL.COM





# THE 68<sup>TH</sup> ANNUAL New Hampshire Antiques Show

SPECIAL  
SHOW  
SECTION



**MEAD AMERICANA**, Ambler, Penn. — American Revolutionary-era “cheesebox” or “single stave” canteen with large rose-heads holding the lapped stave and period initials “MW” scratched into one side, 7 inches in diameter by 3½ inches wide. Thousands of similar canteens were made in Hingham, Mass., for American military use throughout the Revolutionary War.



**HOLLIS BRODRICK**, Portsmouth, N.H. — Rare Eighteenth Century “Liberty Tree” lantern with pierced wedding cake top, circa 1750-75.

[nhada.org](http://nhada.org)



**VILLAGE BRAIDER**, Plymouth, Mass. — Twentieth Century oil on canvas of a deer by a mountain stream by Carl Rungius, 15 by 18 inches.

**PEWTER & WOOD ANTIQUES**, Enfield, N.H. — Hooked rug with depiction of a cat, early Twentieth Century, professionally mounted, 18¼ by 23 inches.



**BETTY BELL ANTIQUES**, Dallas — German clockwork reindeer with Santa in luffa sleigh.



## YOU WILL HAVE A WHALE OF GOODTIME



FIRST QUARTER 20<sup>TH</sup> CENTURY  
WOODEN WHALE WEATHERVANE  
WEATHERED UNTOUCHED SURFACE WITH AN OLD  
TIN MAKE-DO REPAIR TO THE TAIL  
48L - 23H - 1D

FOLK ART CARVED WHALE  
EARLY 20<sup>TH</sup> CENTURY  
UNIQUE CARVED CHARACTERISTICS  
49L X 24 W X 24 H

*Early American Antiques*

BOOTH 52

STEVE SHERHAG - 330.207.2196

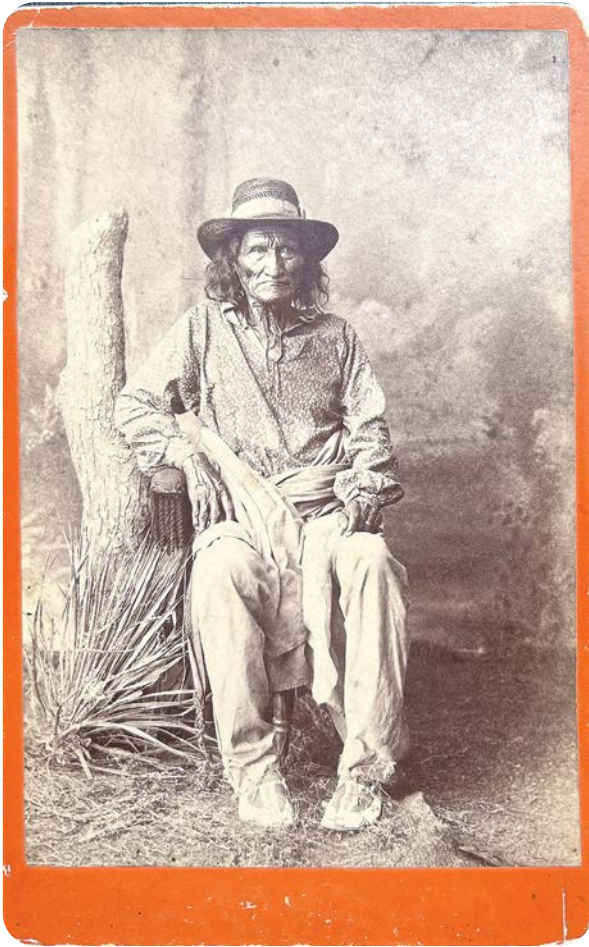
HARTFORDHOUSEANTIQUES.COM





**SPECIAL  
SHOW  
SECTION**

# THE 68<sup>TH</sup> ANNUAL New Hampshire Antiques Show



**RESSER-THORNER AMERICANA, Manchester, N.H.** — Nineteenth Century cabinet card of Geronimo, 4½ by 7 inches, backmark not present. From the collection of Rex Stark.

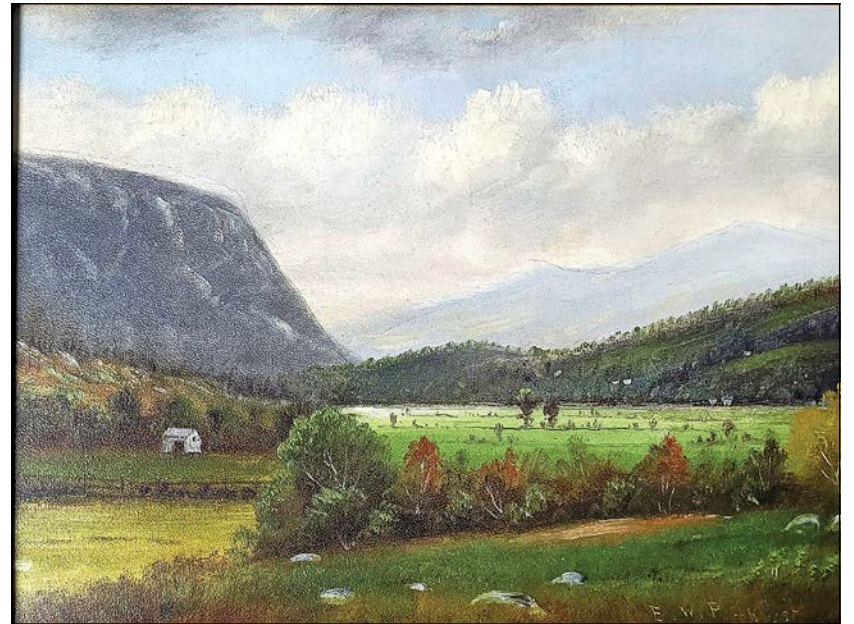
*The 68th Annual*  
**New Hampshire  
Antiques Show**



**BITTNER ANTIQUES, Shelburne, Vt.** — Fulper art pottery vase with Copperdust crystalline glaze, circa 1920, 11 inches.



**SCOTT BASSOFF | SANDY JACOBS ANTIQUES, Swampscott, Mass.** — Small ball-footed chest in red with green and gold bands on graphic bullseyes, 31 inches wide by 25 inches high by 19 inches deep.



**PETER SAWYER ANTIQUES, Exeter, N.H.** — View of Humphrey's Ledge, North Conway, N.H.



## **JEFFREY TILLOU ANTIQUES**

### **Queen Anne Painted Tea Table**

Coastal New England, possibly Long Island, New York  
Maple, dark blue-black paint

Over-all in great condition, scrubbed top with stains, retaining an early 19th c. painted surface.

This rare Queen Anne tea table with a notched-corner or quatrefoil top above a shaped apron is supported by turned legs ending on pad feet. In a desirable size, the table exhibits great scale and proportions. Bearing a painted date 1814 to the underside, it appears to be over an original red wash.

26" h., 30" w., 25" d.



Jeffrey Tillou Antiques | 39 West Street, "On the Green"  
Litchfield, CT | 860-567-9693 | [www.tillouantiques.com](http://www.tillouantiques.com)





# THE 68<sup>TH</sup> ANNUAL New Hampshire Antiques Show

SPECIAL  
SHOW  
SECTION



**ZIEBARTH'S GALLERY, Mount Horeb, Wis.** — American Nineteenth Century folk art wooden sign for umbrella and raincoat sales.



**BAKER & CO ANTIQUES, Delmar, N.Y.** — A large selection of quality original painted American country antiques.

**JEWETT-BERDAN ANTIQUES, Newcastle, Maine** — Cast iron architectural element in old crusty white paint, probably from an agricultural building, late Nineteenth Century.

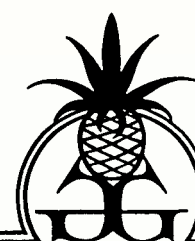
**ROBERT T. FOLEY ANTIQUES, Gray, Maine** — Cast iron lobster doorstop in original paint-mint condition, 12½ by 6½ inches.



**COTTAGE & CAMP, Millerton, N.Y.** — Large antique copper sun face food mold.



Chip Carved Heart,  
Original Red Paint,  
Circa 1880, 16" by 18"



**GARTHOEFFNER GALLERY**  
*Antiques*

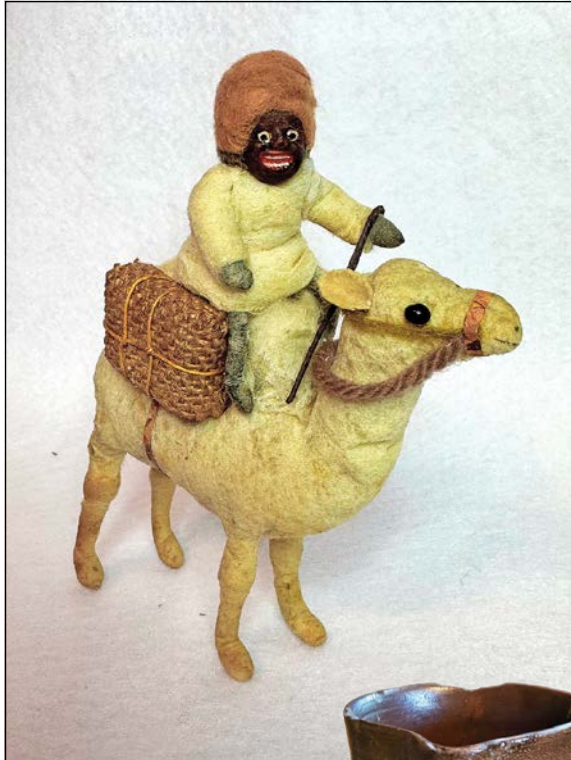
**Pat and Rich Garthoeffner  
ANTIQUES & FINE ART**

Lititz, PA 17543  
717-581-0935 717-471-4694



**SPECIAL  
SHOW  
SECTION**

# THE 68<sup>TH</sup> ANNUAL New Hampshire Antiques Show



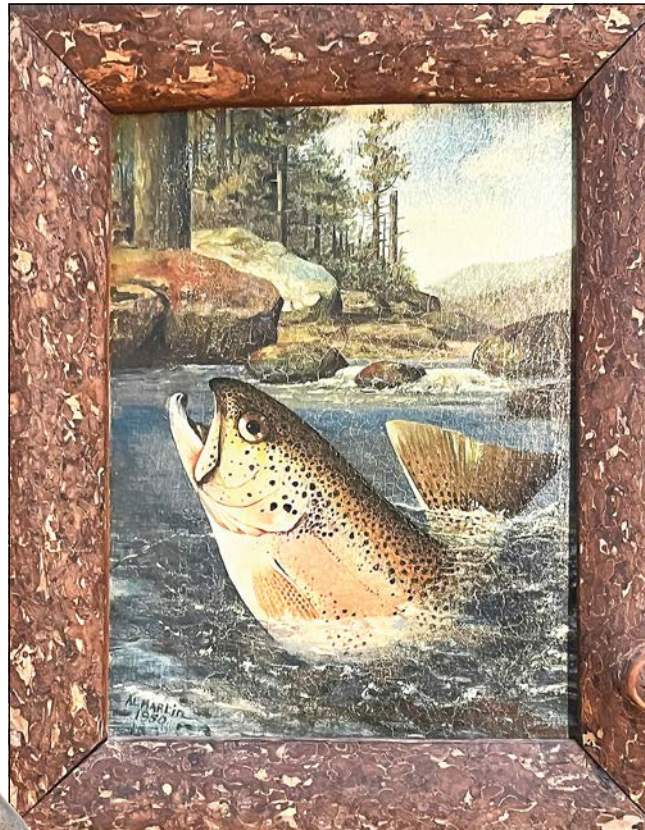
**BETTY BELL  
ANTIQUES, Dallas —**  
German cotton Christmas ornament.

[nhada.org](http://nhada.org)

**THOMAS M. RAWSON  
ANTIQUES, Cedar  
Rapids, Iowa —**  
Stoneware pitcher with  
cobalt filled swag and  
tassel design, Norwich  
attribution.

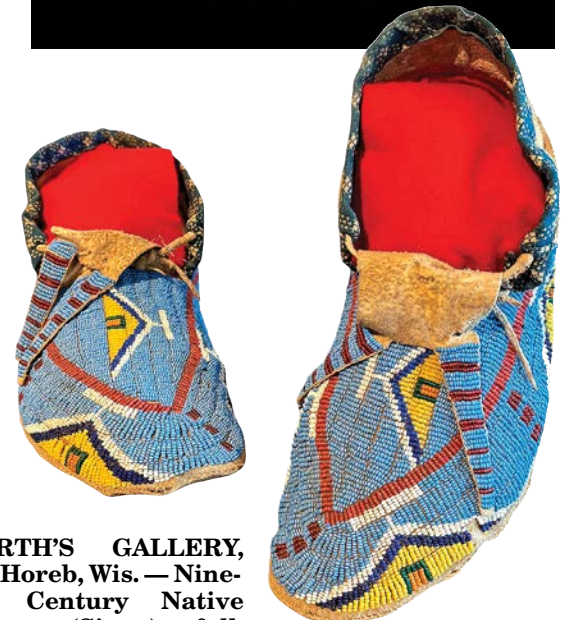


**JOHN HUNT MARSHALL, Westhampton, Mass. —**  
Delft tobacco jar, probably Dutch, circa 1750.



**ROBERT BURGER, Mount Vernon, Ohio —**  
“Leaping Trout” by Al Martin, Maine.

**August 7 – 9, 2025**  
**THURSDAY & FRIDAY:**  
10AM – 7PM  
**SATURDAY: 10AM – 4PM**



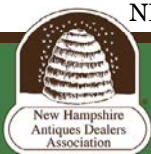
**ZIEBARTH'S GALLERY,  
Mount Horeb, Wis. —** Nine-  
teenth Century Native  
American (Sioux) fully  
beaded adult moccasins.



## MATTHEW EHRESMAN ANTIQUES

3090 Blake Road | Wadsworth, Ohio 44281 | Cell 330-265-7669





# THE 68<sup>TH</sup> ANNUAL New Hampshire Antiques Show

**SPECIAL  
SHOW  
SECTION**



**BOB JESSEN & JIM HOHNWOLD**, Fitzwilliam, N.H. — A male cardinal carved by Warfield and dated 1971.



**JEWETT-BERDAN ANTIQUES**, New-castle, Maine — An extremely rare Bel-snickel candy container with the original glass icicle beard in a brown coat with holly decoration on hood and glass eyes, German, 1880.

**JEFF & HOLLY NOORDSY ART & ANTIQUES**, Cornwall, Vt. — Two-gal-lon Fulton, N.Y., stoneware jug with pair of lovebirds, circa 1855.



**OLIVER GARLAND**, Fal-mouth, Mass. — Early Nine-teenth Century geometric chip carved English watch hutch.

[nhada.org](http://nhada.org)



**THOMAS M. RAWSON ANTIQUES**, Cedar Rapids, Iowa — Folk art bottle whimsy of a bar with three patrons, bartender and Black waiter.



## ARROW-SHIELD-AND-HEART WEATHERVANE

Stonington, Connecticut, circa 1852-1877

Pine, old blue-green paint with tinned iron strapwork make-do repair over original red, white, and blue paint  
Height 5 1/2 inches, width 31 1/2 inches, depth 1 inch

From the estate of Nathaniel Brown Palmer (1799-1877) who at age twenty-one, became famous as a sea captain and Antarctic explorer, where Palmer land and Palmer archipelago are named for him.

**DAVID A. SCHORSCH  
EILEEN M. SMILES**

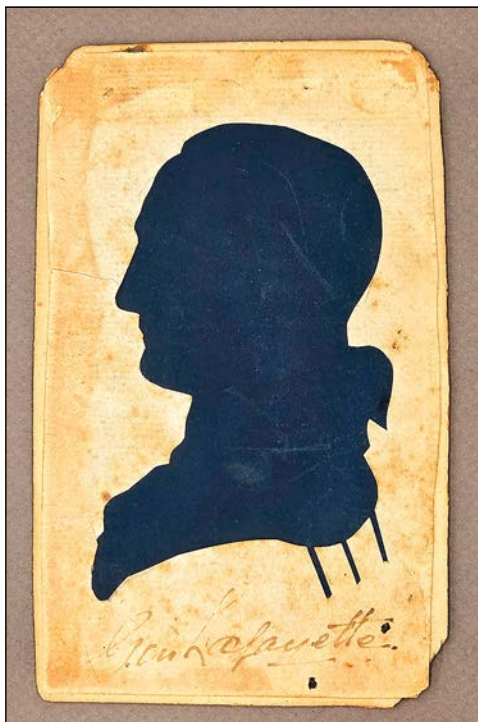
— FINE AMERICANA —

358 Main Street South, Woodbury, CT 06798 • 203.982.7574  
contact@schorsch-smiles.com • www.schorsch-smiles.com  
Antiquarian Equities, Inc.





RESSER-THORNER AMERICANA, Manchester, N.H. — A 1775 commission appointing Porter Kimball of Brentwood to First Lieutenant in Captain Benjamin Boardman's (22nd) Company, written in the hand of Declaration of Independence signer Matthew Thornton. Kimball, who served at Winter Hill and Saratoga, was a slaveholder, and as a result of making a promise to his former slave, Scipio Duce, the latter successfully prosecuted a claim against the Porter Estate in 1794.



MEAD AMERICANA, Ambler, Penn. — Silhouette on laid paper with an early ink inscription "Gen Lafayette," 5¼ inches high.

[nhada.org](http://nhada.org)

JEWETT-BERDAN ANTIQUES, Newcastle, Maine — Tombstone-shaped feed store, country store trade sign in original paint, circa 1860, 50 inches.



BETTY BELL ANTIQUES, Dallas — German Dresden Christmas ornaments, 1870-1917.

# OLD AS ADAM.

*Adam Irish ~ Antiques & Americana*



Booth  
No 10



*Paint-decorated game board,  
ca. mid-19th century  
(30 x 19 inches)*



*Memorial watercolor, ca. 1820  
(10 x 7.5 inches)*

## VISIT THE STORE

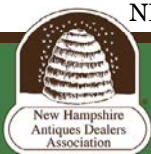
507 Main Street in Warren, RI

## SHOP ONLINE

@oldasadam | [oldasadam.com](http://oldasadam.com)

Tel. 603-661-9373 [adam@oldasadam.com](mailto:adam@oldasadam.com)



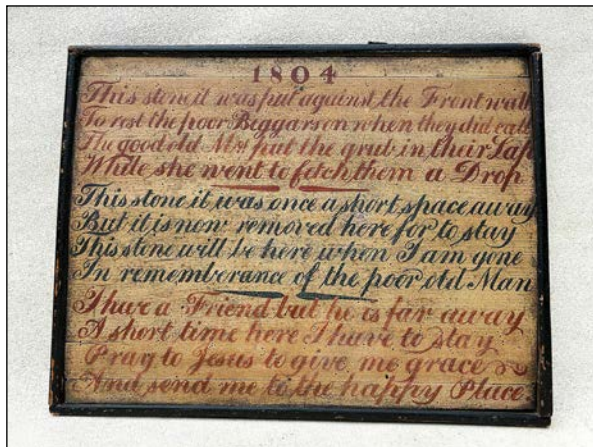


# THE 68<sup>TH</sup> ANNUAL New Hampshire Antiques Show

SPECIAL  
SHOW  
SECTION



**SCOTT BASSOFF | SANDY JACOBS ANTIQUES,** Swampscott, Mass. — Late Eighteenth Century miniature portrait ring in 14K rose gold with a pearl surround.



**BITTNER ANTIQUES,** Shelburne, Vt. — Tiffany Studios New York Plain Squares geometric pattern 18-inch table lamp with base #584, circa 1910.



**HERCULES J. PAPPACHRISTOS,** Derry, N.H. — Rare carved horn comb depicting a Native American.

**STEPHEN/DOUGLAS,** Walpole, N.H. & Rockingham, Vt. — Painted, decorated wooden memorial, dated "1804," probably English.

**NATHAN LIVERANT & SON,** Colchester, Conn. — Chippendale cherry tall chest with carved fan and fluted pilasters, descended in the Stark family of Connecticut and Vermont, 1785-1805.



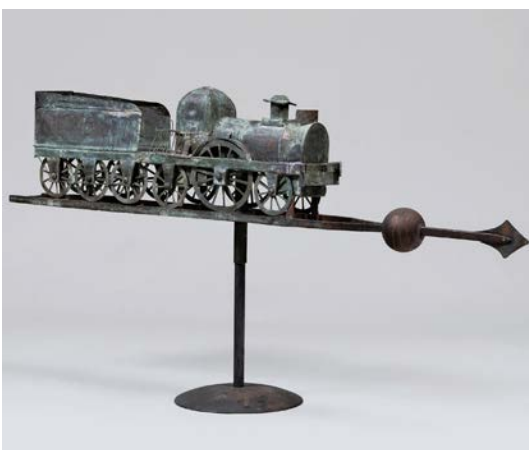
**19th C. Rochester Rooster Weathervane** retaining its old painted surface. American c 1870. 36" L x 30" H



**Whimsical Cast Iron Dog** with Bone retaining its old original surface. American c 1910. 17" H



**Pair of 19th C. Cast Iron Roosters** retaining their old surface and paint. 23" H x 20" L



**Copper and Wrought-Iron Locomotive Weathervane** with an old patinated surface. 5' L x 13" H (w/o stand) American c. 1920

**JUDITH & JAMES  
MILNE**

*At Home Antiques*

KINGSTON, NY

917 402 1778 or 917 754 5454

Instagram@milneantiquesanddesign  
jmilneantiques@gmail.com

**BOOTH 14**



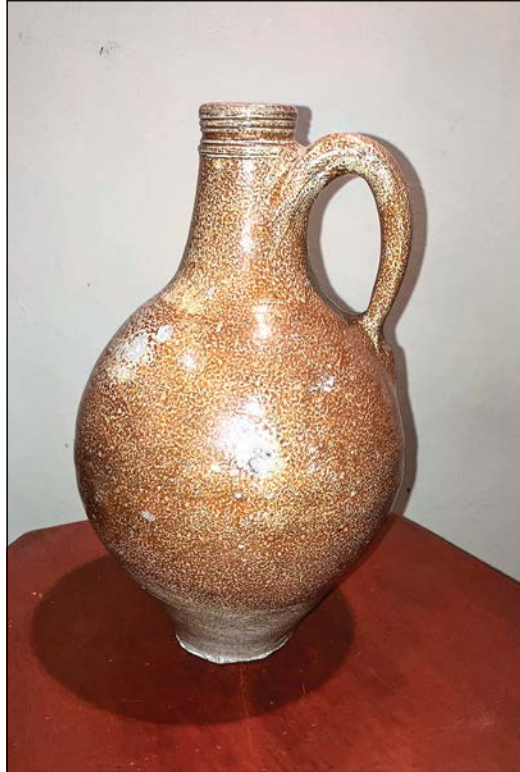
**SPECIAL  
SHOW  
SECTION**

# THE 68<sup>TH</sup> ANNUAL New Hampshire Antiques Show



**JEWETT-BERDAN ANTIQUES**, Newcastle, Maine — An untouched monumental Father Christmas candy container standing 36 inches tall, circa 1920, most likely made as a window display.

[nhada.org](http://nhada.org)



**HOLLIS BRODRICK**, Portsmouth, N.H. — Rare early Dwight-Fulham English brown stoneware jug, circa 1685, with diagnostic "ear" shaped handle.



**SCOTT BASSOFF | SANDY JACOBS ANTIQUES**, Swampscott, Mass. — Victorian butterfly brooch with rose cut diamonds throughout.



**ZIEBARTH'S GALLERY**, Mount Horeb, Wis. — Superb double-sided gameboard dated "1865."

*The 68th Annual*  
New Hampshire Antiques Show

**August 7 – 9, 2025**

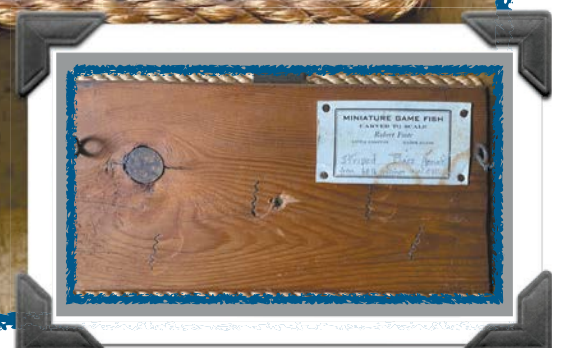
THURSDAY & FRIDAY: 10AM – 7PM

SATURDAY: 10AM – 4PM

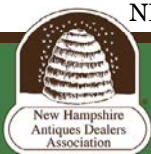


DIMENSIONS: FISH: 9.5" X 3.75" OVERALL: 10.75" X 5.75"

**ROBERT T FOLEY**  
**ANTIQUES GRAY, MAINE (207) 756-4290**  
Booth #57

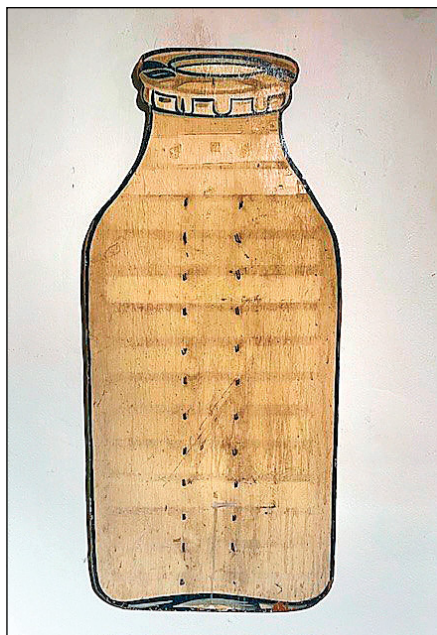






# THE 68<sup>TH</sup> ANNUAL New Hampshire Antiques Show

SPECIAL  
SHOW  
SECTION



**JEWETT-BERDAN ANTIQUES, Newcastle, Maine** — Painted and wooden milk bottle trade sign, circa 1920s, 32 inches.



**JEFF & HOLLY NOORDSY ART & ANTIQUES, Cornwall, Vt.** — Miniature watercolor depicting Napoleon in exile, circa 1820.



**ROBERT T. FOLEY ANTIQUES, Gray, Maine** — Late Eighteenth Century diminutive cherry wallbox, 10 1/2 by 4 1/4 inches.

**BITTNER ANTIQUES, Shelburne, Vt.** — Abraham Lincoln carte-de-visite O-90 (vignette), taken by Anthony Berger at Brady's Washington Gallery in 1864, with Brady credit and backmark.

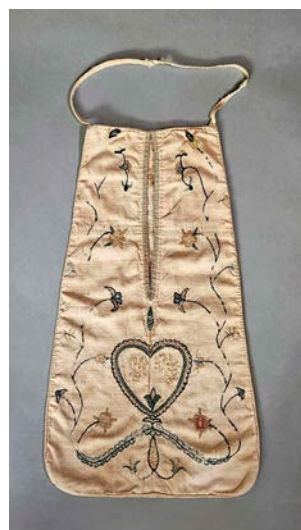


**COTTAGE & CAMP, Millerton, N.Y.** — Folky bulldog cast garden ornament.



Randi Ona  
Antiques

[www.onaantiques.com](http://www.onaantiques.com)  
[randionaantiques@gmail.com](mailto:randionaantiques@gmail.com)  
973-495-3707



Looking forward to seeing you at the NHADA SHOW - BOOTH #45



**SPECIAL  
SHOW  
SECTION**

# THE 68<sup>TH</sup> ANNUAL New Hampshire Antiques Show

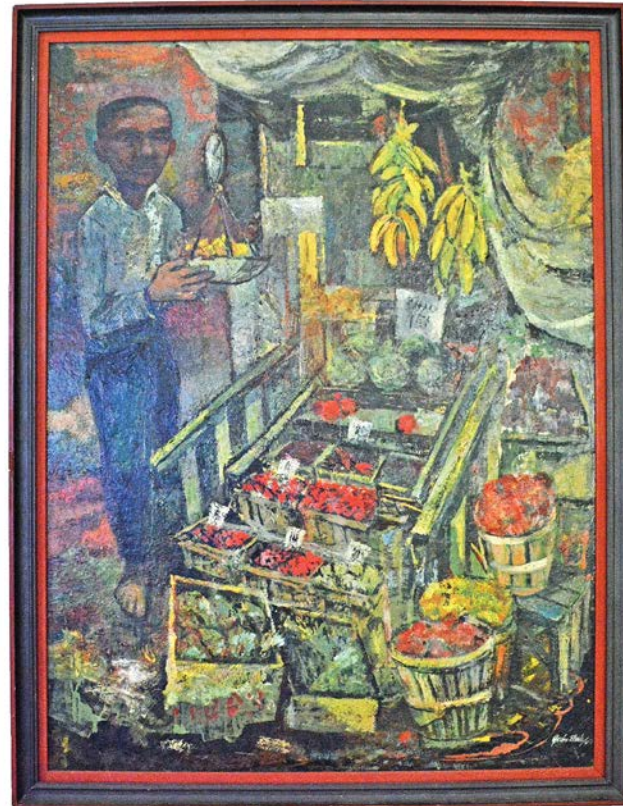


**NATHAN LIVERANT & SON, Colchester, Conn. —** Folk art doll size horn chair with velvet seat and head rest, Chicago or Texas, 1880-1900.

**KELLY KINZLE, New Oxford, Penn. —** Shelf clock by John Taber of Saco, Maine, circa 1815.



**COTTAGE & CAMP, Millerton, N.Y. —** Winter sandpaper drawing.



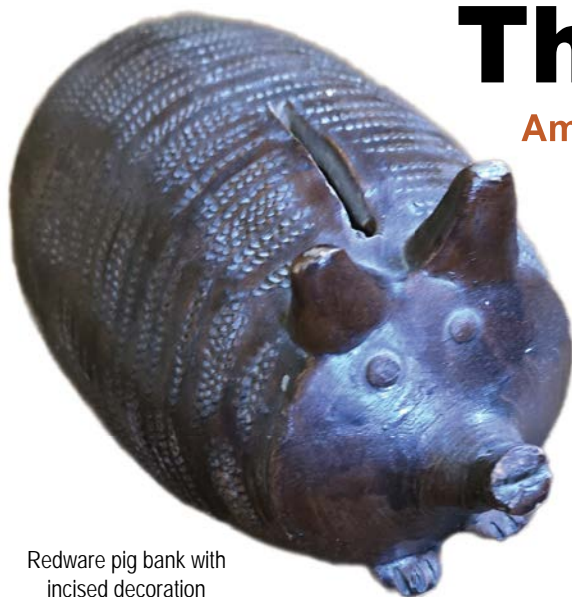
**VILLAGE BRAIDER, Plymouth, Mass. —** "Market" by Gordon Steele, 1951, oil on Masonite.

**CHRISTOPHER & BERNADETTE EVANS ANTIQUES, Waynesboro, Va. —** An early Twentieth Century American molded stoneware bank in the form of a beehive with the words "A Penny Saved is a Penny Earned" molded on the top of the rim, 5 inches in diameter.



## Thomas M. Rawson

American Folk Art, Redware and Stoneware Pottery,  
Naive and Sophisticated Paintings



Redware pig bank with incised decoration



Carved Dog Figure with Exposed Tongue - Kentucky origin



Beautifully glazed redware keg likely NH origin



Pair carved wooden nudes with uplifted arms



Folk art carving of Davy Crockett by Earnest Patton, nephew of Edgar Tolson

**CEDAR RAPIDS, IA 319-389-2041**





# THE 68<sup>TH</sup> ANNUAL New Hampshire Antiques Show

**SPECIAL  
SHOW  
SECTION**



**PEWTER & WOOD ANTIQUES, Enfield, N.H.** — Early Twentieth Century naïve style over-the-mantle painting titled "Seascape & Harbor," oil on wood, 20½ by 25½ inches.



**THOMAS M. RAWSON ANTIQUES, Cedar Rapids, Iowa** — Large stoneware pitcher with cobalt swags, marked "Norwich."



**BITTNER ANTIQUES, Shelburne, Vt.** — "Modern Independence" by Daniel Pressley, carved wood relief, 24 by 31 inches.

*The 68th Annual*  
New Hampshire Antiques Show  
**August 7 – 9, 2025**  
THURSDAY & FRIDAY: 10AM – 7PM  
SATURDAY: 10AM – 4PM



**BETTY BELL ANTIQUES, Dallas** — Early German Halloween items.

## Spencer Marks

Fine Antique & 20<sup>th</sup> Century Silver  
[www.spencermarks.com](http://www.spencermarks.com)



Barbour Silver Co.  
Martelé-style centerpiece bowl  
Wallingford, CT, c. 1904,  
possibly exhibited at the 1904  
St. Louis World's Fair.

Signed by master chaser  
Christopher Whelan,  
it is his finest known work.



Spencer Gordon, III ★ Mark F. McHugh

P.O. Box 330, Southampton, Massachusetts 01073 (413) 527-7344

Member: The Art and Antiques Dealers League of America, CINOA & The Antique Dealers' Association of America





**SPECIAL  
SHOW  
SECTION**

# THE 68<sup>TH</sup> ANNUAL New Hampshire Antiques Show



**JEFFREY TILLOU ANTIQUES**, Litchfield, Conn. — Hamburg rooster weathervane by L. W. Cushing and Sons (1872-1933), Waltham, Mass., circa 1880, full body copper, cast zinc head and spur feet, 29½ inches high by 28 inches wide by 9 inches deep (base).



**COTTAGE & CAMP**, Millerton, N.Y. — Nineteenth Century albumen photo of a cow.

**JEFF & HOLLY NOORDSY ART & ANTIQUES**, Cornwall, Vt. — Dramatic Nineteenth Century watercolor portrait of a young woman. Ex H. Marshall Goodman, Jr.

*The 68th Annual*  
New Hampshire Antiques Show  
**nhada.org**

**MATTHEW EHRESMAN ANTIQUES**, Wadsworth, Ohio — Double-tiered pine wallbox in old gray paint, New England, 19 inches tall by 11 inches wide by 6½ inches deep.



**ZIEBARTH'S GALLERY**, Mount Horeb, Wis. — Alfred Montgomery (1857-1922) oil on board still life painting dated "1910."



## Sheridan Loyd

american ★ antiques

sheridanloydantiques@gmail.com

www.sheridanloyd.com

Cell - 816-210-6924

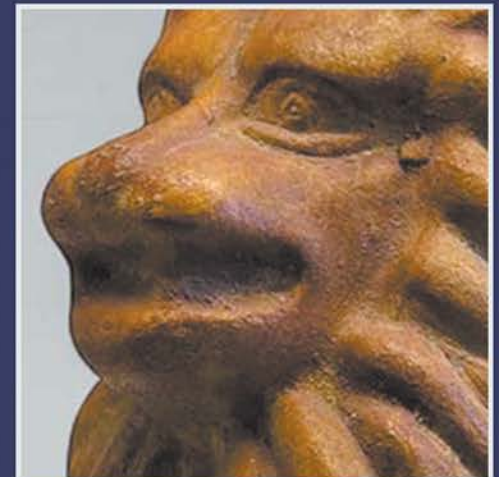
Decorative Paint



Baskets & More



Hearts & Hands



Felines & Folk Art

**New location!**  
**We have moved to  
the lower level.**  
**Booth #58**







# THE 68<sup>TH</sup> ANNUAL New Hampshire Antiques Show

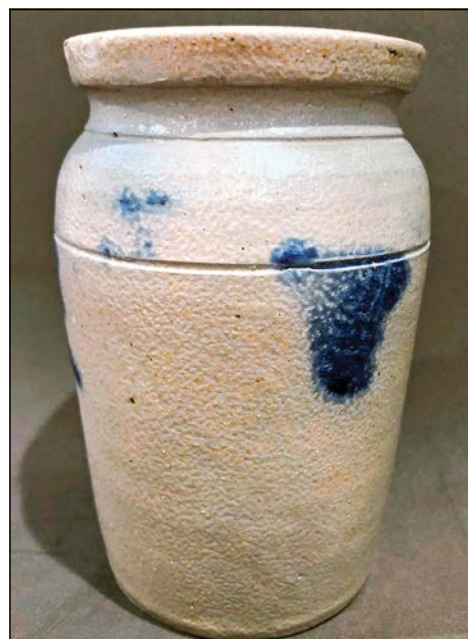
SPECIAL  
SHOW  
SECTION



**JEFF & HOLLY NOORDSY ART & ANTIQUES,** Cornwall, Vt. — Nineteenth Century Pennsylvania chalkware rabbit.



**MATTHEW EHRESMAN ANTIQUES,** Wadsworth, Ohio — Early punched tin lantern, blue lidded bucket and miniature painted mirror.



**CHRISTOPHER & BERNADETTE EVANS ANTIQUES,** Waynesboro, Va. — A small cobalt-decorated stoneware jar, 5¼ inches tall, Nineteenth Century, Southeastern Pennsylvania origin.



**JEWETT-BERDAN ANTIQUES,** Newcastle, Maine — Cast zinc and cast iron blacksmith trade sign, circa 1920.



**JEWETT-BERDAN ANTIQUES,** Newcastle, Maine — "Chicken Coop" sand sign, circa 1900, 32 inches long.

Bettyhbell@aol.com  
(214) 478 0332



Early German Christmas



SPECIAL  
SHOW  
SECTION

# THE 68<sup>TH</sup> ANNUAL New Hampshire Antiques Show



**BAKER & CO ANTIQUES**, Delmar, N.Y. — A child's puzzle board, possibly New York, circa 1890-1900, old black paint. Ex folk art collection of Peter Brahms and Kelter/Malce, Skinners of Bolton, Mass., February 2001.

**STEPHEN/DOUGLAS**, Walpole, N.H. & Rockingham, Vt. — Joseph Davis's watercolor of "Catharine T. Dokum, age 14, Dec. 18th 1837." New Hampshire origin.



**PEWTER & WOOD ANTIQUES**, Enfield, N.H. — Lipstick red bucket with bail handle, signed "Z.A. Boyce, Fitzwilliam, NH," 7¼ by 9 inches; 48-star child's parade flag, set in Nineteenth Century frame, 12¾ by 16¼ inches.



**VILLAGE BRAIDER**, Plymouth, Mass. — Nineteenth Century painting of three dogs and a cat, oil on canvas, sight size: 13 by 10 inches.

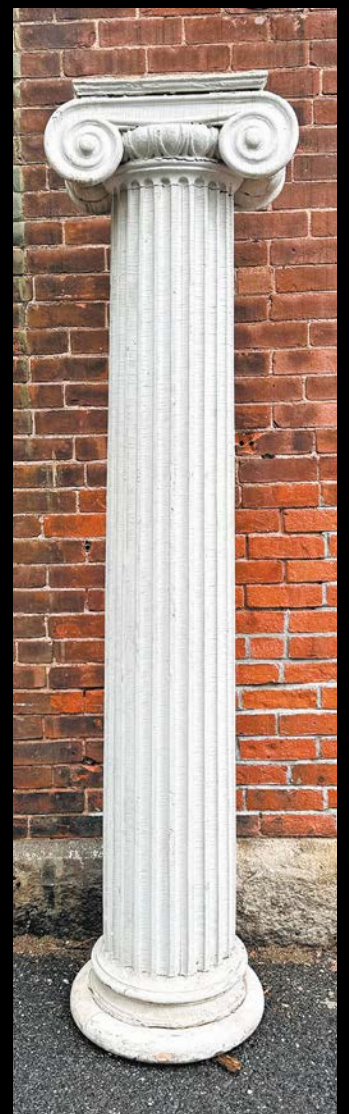
*The 68th Annual*  
New Hampshire Antiques Show  
**August 7 – 9, 2025**

THURSDAY & FRIDAY: 10AM – 7PM

SATURDAY: 10AM – 4PM



Pair of structural columns, c1840  
Height 82 3/4"



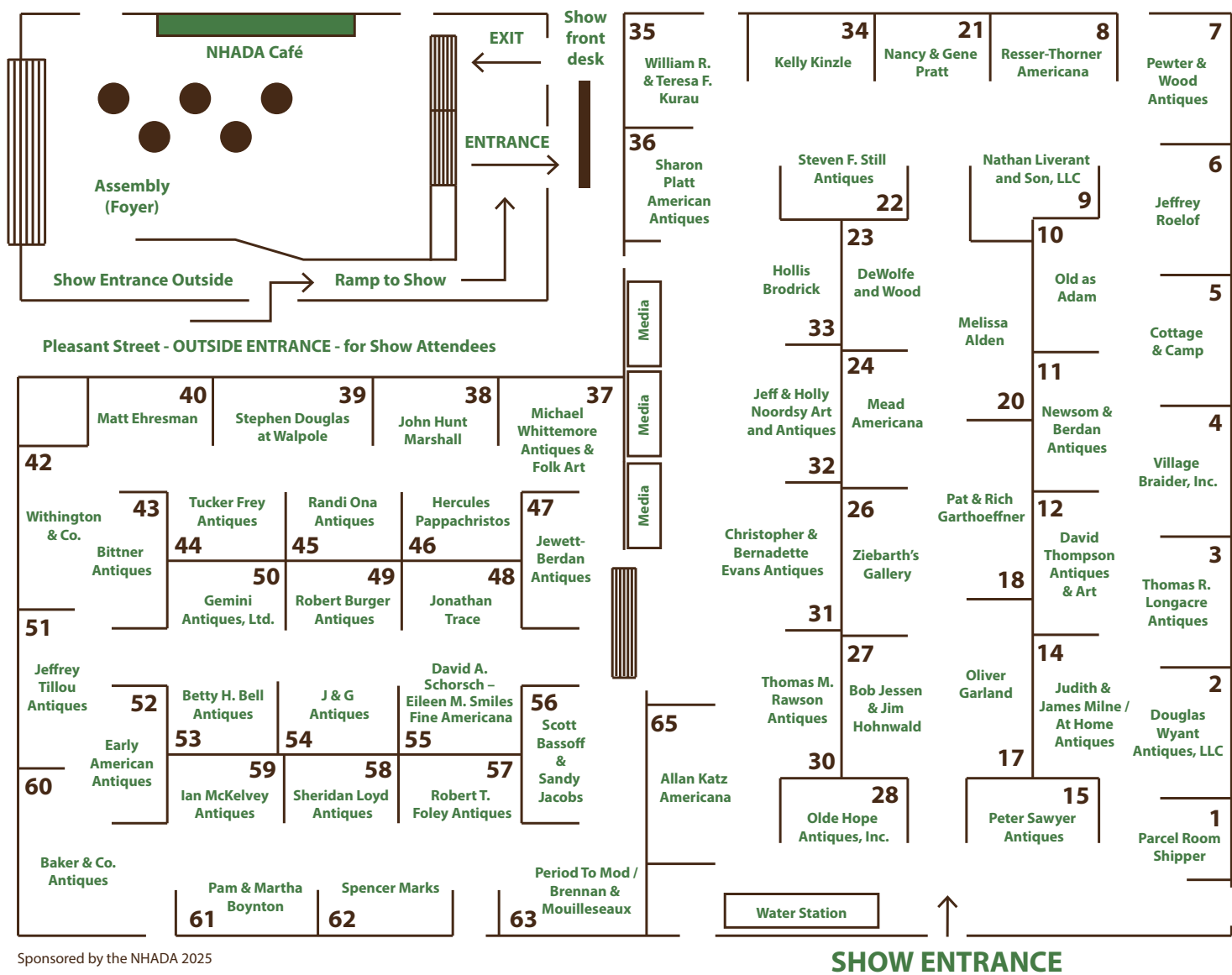
## John Hunt Marshall

### ANTIQUES

254 Reservoir Rd. | Westhampton, MA 01027 | 413-519-1715



2025 NHADA EXHIBITOR LIST



- Melissa Alden, Portsmouth, NH

Baker & Co. Antiques, Delmar, NY

Betty H. Bell Antiques, Dallas, TX

Bittner Antiques, Shelburne, VT

Pam & Martha Boynton, Townsend, MA

Hollis Brodrick, Portsmouth, NH

Robert Burger Antiques, Mount Vernon, OH

Cottage & Camp, Millerton, NY

DeWolfe and Wood, Alfred, ME

Early American Antiques, Canfield, OH

Matt Ehresman, Wadsworth, OH

Christopher & Bernadette Evans Antiques, Waynesboro, VA

Robert T. Foley Antiques, Gray, ME

Tucker Frey Antiques, Woodbury, CT

Oliver Garland, Falmouth, MA

Pat & Rich Garthoeffner, Lititz, PA

Gemini Antiques, Ltd., Whitehouse Station, NJ

J & G Antiques, Amityville, NY

Scott Bassoff and Sandy Jacobs, Swampscott, MA

Bob Jessen & Jim Hohnwald, Fitzwilliam, NH

Jewett-Berdan Antiques, Newcastle, ME

Allan Katz Americana, Madison, CT

Kelly Kinzle, New Oxford, PA

William R. & Teresa F. Kurau, Collegeville, PA

Nathan Liverant and Son, LLC, Colchester, CT

Thomas R. Longacre Antiques, Marlborough, NH

Sheridan Loyd Antiques, St. Joseph, MO

John Hunt Marshall, Westhampton, MA

Ian McKelvey Antiques, Columbia, CT

Mead Americana, Ambler, PA
- Booth 20

Booth 60

Booth 53

Booth 43

Booth 61

Booth 33

Booth 49

Booth 5

Booth 23

Booth 52

Booth 40

Booth 31

Booth 57

Booth 44

Booth 17

Booth 18

Booth 50

Booth 54

Booth 56

Booth 27

Booth 47

Booth 65

Booth 34

Booth 35

Booth 9

Booth 3

Booth 58

Booth 38

Booth 59

Booth 24
- Judith & James Milne/At Home Antiques, Kingston, NY

Newsom & Berdan Antiques, Thomasville, PA

Jeff & Holly Noordsy Art and Antiques, Cornwall, VT

Old as Adam, Warren, RI

Olde Hope Antiques, Inc., New York, NY

Randi Ona Antiques, Wayne, NJ

Hercules Pappachristos, Derry, NH

Period To Mod/Brennan & Mouilleseaux Antiques & Design, Briarcliff Manor, NY

Pewter & Wood Antiques, Enfield, NH

Sharon Platt American Antiques, New Castle, NH

Nancy & Gene Pratt, Victor, NY

Thomas M. Rawson Antiques, Cedar Rapids, IA

Resser-Thorner Americana, Manchester, NH

Jeffrey Roelof, Kalamazoo, MI

Peter Sawyer Antiques, Exeter, NH

David A. Schorsch - Eileen M. Smiles, Fine Americana, Woodbury, CT

Spencer Marks, Southampton, MA

Stephen Douglas at Walpole, Walpole, NH

Steven F. Still Antiques, Manheim, PA

David Thompson Antiques & Art, So. Dennis, MA

Jeffrey Tillou Antiques, Litchfield, CT

Jonathan Trace, Portsmouth, NH

Village Braider, Inc., Plymouth, MA

Michael Whittemore Antiques & Folk Art, Punta Gorda, FL

Withington & Co., Cape Neddick, ME

Douglas Wyant Antiques, LLC, Cassopolis, MI

Ziebarth's Gallery, Mount Horeb, WI
- Booth 14

Booth 11

Booth 32

Booth 10

Booth 28

Booth 45

Booth 46

Booth 63

Booth 7

Booth 36

Booth 21

Booth 30

Booth 8

Booth 6

Booth 15

Booth 55

Booth 62

Booth 39

Booth 22

Booth 12

Booth 51

Booth 48

Booth 4

Booth 37

Booth 42

Booth 2

Booth 26

