

Upcoming Auctions:

The Austin Hills

"Eclectic Collection" Auction

Monday, May 19th at 10 am

Previews:

Sunday, May 11th, 10 am - 5 pm

Thursday, May 15th, noon - 5 pm

Friday, May 16th, 9 am - 5 pm

Monday, May 19th, 9 am - end of auction



Pair of Marble Top Giltwood Eagle Console Tables.
The Austin Hills "Eclectic Collection" Auction
Estimate: \$6,000 / 10,000



Chinese Cloisonné Box.
The Austin Hills "Eclectic Collection" Auction
Estimate: \$2,000 / 4,000



HONDA SYORYU
(Japanese, born 1951)
Woven Basket
The Austin Hills "Eclectic Collection" Auction
Estimate: \$5,000 / 8,000



Ancient Roman Marble Bust of a Tritoness.
The Austin Hills "Eclectic Collection" Auction
Estimate: \$4,000 / 6,000



GRACE CARPENTER HUDSON
(American, 1865-1937)
Portrait
The Austin Hills "Eclectic Collection" Auction
Estimate: \$8,000 / 10,000

MICHAAN'S AUCTIONS

Auctioneers & Appraisers

ANDY WARHOL
(American, 1928-1987)
Il. 386: "Teddy Roosevelt"
The Austin Hills "Eclectic Collection" Auction
Estimate: \$60,000 / 80,000



May Gallery Auction

Friday, May 16th at 10 am

Previews:

Sunday, May 11th, 10 am - 5 pm

Thursday, May 15th, noon - 5 pm

Friday, May 16th, 9 am - end of auction

Over 100 lots new in box of O gauge trains.



Lionel 6-83194 Southern Pacific
Legacy GS-4 #4449.
May Gallery Auction
Estimate: \$800 / 1,000



Lionel 6-84685 Polar Express Legacy
Berkshire.
May Gallery Auction
Estimate: \$1,200 / 1,400



Lionel Vision Line 2131490 Santa Fe
Black Bonnet.
May Gallery Auction
Estimate: \$1,400 / 1,600

Tiffany & Co. 14k Yellow Gold
Pocket Watch.
May Gallery Auction
Estimate: \$400 / 600



Vintage Steiff Disney
Mickey Mouse Doll.
May Gallery Auction
Estimate: \$1,000 / 1,500



Attributed to Filippo Palizzi
"Le Caniche Fuffy" Micromosaic,
18k Yellow Gold Pendant Brooch.
May Gallery Auction
Estimate: \$5,000 / 7,000

June Fine Auction

Thursday, June 12th at 10 am

Previews:

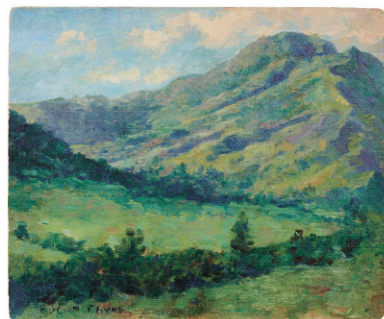
Sunday, June 8th, 10 am - 5 pm

Thursday, June 12th, 9 am - end of auction

Property of Warren Kopp and Paul Hardman, and Marilyn Kopp,
Pacific Heights, San Francisco, CA.



Jadeite Jade, Diamond,
White Gold Ring.
Accompanied with GIA Report.
Summer Fine Auction
Estimate: \$8,000 / 12,000



EDGAR ALWIN PAYNE
(American, 1883-1947)
"Hollywood Canyon"
Summer Fine Auction
Estimate:
\$6,000 / 8,000



www.michaans.com
(800) 380-9822 • (510) 740-0220
Gallery Showroom: 2751 Todd Street, Alameda, CA 94501
Annex Showroom: 2701 Monarch Street, Alameda, CA 94501

Bond #71393954