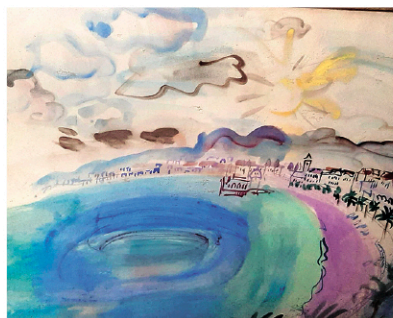


IMPORTANT MARCH ESTATE CATALOGUE AUCTION



Raoul Dufy (French, 1877-1953).
Nice, Promenade des Anglais

Including Property From

A Longtime Washington, DC, Collector

- Rare, Historic American Newspapers and Other Ephemera from the Collection of a Retired Journalist
- Antiques & Fine Art from Various Other Estates and Consignors • Antiques, furniture, paintings and sculpture, silver, decorative arts, rugs, jewelry, Asian ceramics and works of art, and clocks

Thurs. March 13 at 11am • Fri. March 14 at 11am

EXHIBITION: Sat, March 8: 11am-4pm • Mon, March 10: 10am-5pm

• Tues, March 11: 10am-5pm • Wed, March 12: 10am-3pm

Absentee, Telephone and Internet Bids Accepted



Henriette Ronner-Knip (Dutch / Belgian, 1821 - 1909). Cats with Four Kittens Playing with a Copper Lantern and Red Teabox, 1900



George Smith Armfield (English, 1808-1893).
Spaniels Flushing a Pheasant



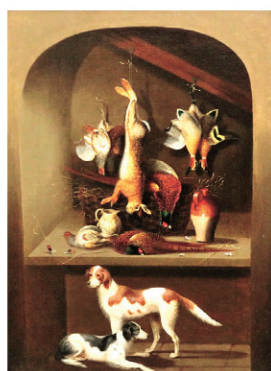
English School (Circa 1760). Gentlemen Drinking and Smoking Pipes Round a Table, a servant bearing a bowl of punch



John Emms (English, 1841-1912).
Gone to Earth



Emile Galle Marquetry Table with Cat Motif



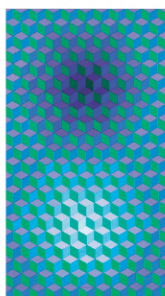
Benjamin Blake (English, 1757-1830).
One of two works depicting game in larder with dogs



Part Collection Rare Historic American Newspapers and Other Ephemera



Lionel Dalhousie Robertson Edwards (British, 1878 - 1966).
Off to the Meet



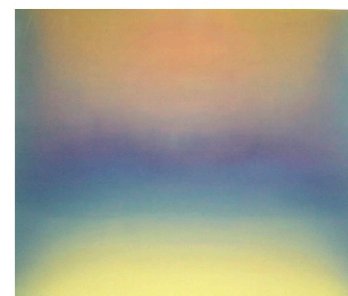
Victor Vasarely (Hungarian / French, 1906-1997). Hexa-Oltar, 1976



Part Collection
Flora Danica Porcelain Tableware



Sandor Nyulassy (Slovak, 1840-1903).
Portrait of a Lady, half-length, Holding Bunches of Grapes, 1874



Leon Berkowitz (American, 1911 - 1987). Algonquitt, 1985,
Oil on canvas. Verso titled, signed and dated.



Dimitri Omersa For Liberty Of London Distributed by Abercrombie & Fitch Leather Pig Ottoman/Footstool



Adolf Schreyer (French / German, 1828 - 1899). The Standard Bearer



Part Collection Continental Silver Bird-Form Table Ornaments



Part Important Collection of Archaic Chinese Jades



Boxing Trunks, Robe, and Ribbon Schematic, Each Signed and Designed by Washington Color School Painter Gene Davis in his Signature Stripe Pattern

L'epee Gilt Brass Striking Carriage Clock With Alarm, Day, Date and Moonphases Retailed by Asprey, Late 20th Century



Black Forest Carved Bear Hall Tree, 19th Century

Benjamin Marshall (English, 1767-1865). A Gentleman with a Bay Hunter and Terrier in a Landscape

