



Nautical, Firearms, Decorative Arts, Ephemera, Country Americana

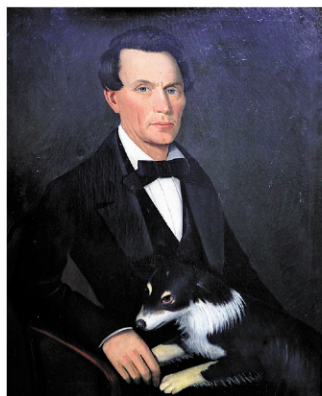
Online at: [liveauctioneers](https://www.liveauctioneers.com)

TWO SESSIONS:

SESSION 1: January 19, 2025 • 12:00 Noon • Nautical, Early Firearms, Decorative Arts, Ephemera, etc.

SESSION 2: January 26, 2025 • 12:00 Noon • Country Americana & Primitives

PREVIEWS BOTH SESSIONS: Fri. & Sat. Jan. 17 & 18 and Jan 24 & 25, 1-4PM • Sun. Jan. 19 & 26 10AM to Noon • or Previews by Appt. week of Sale.



Ammi Phillips – Portrait George Beckwith



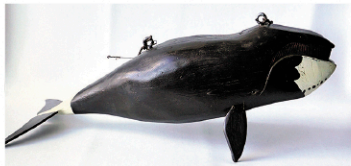
Sample of Jeff Raymond Whale & Fish Carvings



Signed John H. Twachtman – O/B Shot Tower



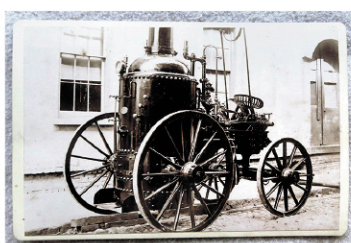
Flintlock Rifles - Tiger Maple - 1800



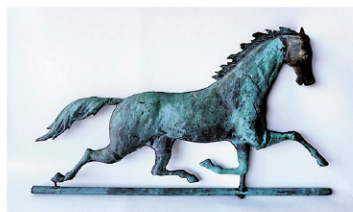
Sample of Jeff Raymond Whale Carvings



Artistic Carving Co. – Boston – 44" wingspan



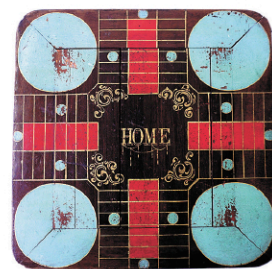
Sample of Photos & Ephemera



Sample of Weathervanes



1 of 2 Early Farm Tables



Sample of Country Collectibles



Sample Folk Art - Carved Flying Duck Weathervane



Sample of Nautical – Jeff Raymond Collection



Sample of Early Country Furniture



Sample Carbines - Gallagher's Patent 1860



Flintlock Pistols - U.S. Model 1805 Harper's Ferry



O/C Signed J.M.W.T. (Turner) Seascape

Featuring the contents of the Asa and Jean Beckwith estate, Pleasant Valley NY (Country Americana-Firearms), the estate of Jeff Raymond, Red Hook NY (Nautical collection), early firearms & military from a local retired historian, and other partial estates gathered throughout the Hudson Valley & Connecticut. Highlights: Important Ammi Phillips portrait of George Beckwith holding his dog (handed down in family), large stoneware collection, a collection of early flintlock and percussion rifles and pistols including Dutchess County NY, other military including bayonets-CW swords-flare guns-Rev. War canteen, hand forged early lighting, a local coin silver collection, whale & fish carvings – many by Jeff Raymond, many 18th/19th c. whaling tools & implements including harpoons & blubber tools, carved whalebone & ivory nautical collectibles (pending US Fish & Wildlife approval), ship models, half-hull boat models, "Sestrel" binnacle compass, other

marine collectibles, baskets including Taghkanic, a very fine reverse painted family silhouette 19th C., Queen Ann looking class, duck decoys, a sea captain's box decorated with inlaid nautical motif, a rare hand written nautical book describing the stations and responsibilities on the frigate "U.S.F. Macedonia 1839", early military books, various advertising articles, American folk art, painted treenware, weathervanes, work tables, candlestands, Q.A. game table, pair of matching brace-back Windsor chairs in original black paint plus other country chairs, various blanket boxes in paint, 2 farm tables, Chippendale slant front desks & cherry secretary desk, 2 tapered leg country store desks in paint, Sandwich glass fluid lamps plus other early glass, pair of rustic cast iron horse hitching posts – tree branch form, many early hand forged iron hearth tools, fountain pen collection, ephemera including many Dutchess County collectibles,

1905 MLB programs, pocket watches, architectural including matched pair of federal mantles and a pair of early Ionic fluted wooden columns, vintage movie lobby cards, large local postcard collection, early unframed oriental woodblock prints, good country artwork including primitive landscapes, seascapes, & portraits – some by listed artists, miniature portraits including Puffy Sleeve, 2 early jointed Teddy Bears, Christmas related, quilts, early Adam & Eve Sampler, folk art watercolor family record 1800, game racks, colonial currency, vintage comic books, Clarence Sinclair Bull photos, cabinet card photos machinery, etc.

Online bidding at www.liveauctioneers.com
Reserve Seating • Phone & Absentee Bidding

HYDE PARK COUNTRY AUCTIONS • 845-471-5660 • 900 Dutchess Turnpike, Poughkeepsie NY • www.hpcountryauctions.com