

# THE 67<sup>TH</sup> ANNUAL New Hampshire Antiques Show

Melissa Alden

Baker & Co. Antiques

Bittner Antiques

Pam & Martha Boynton

Hollis Brodrick

Robert Burger Antiques

Cottage & Camp

DeWolfe and Wood

Early American Antiques

Matt Ehresman

J & G Enoksen

Christopher & Bernadette Evans

Brian J. Ferguson

Robert T. Foley Antiques

Tucker Frey Antiques

Oliver Garland

Pat & Rich Garthoeffner

Gemini Antiques, Ltd.

Scott Bassoff and Sandy Jacobs

Bob Jessen & Jim Hohnwald

Jewett-Berdan Antiques

Allan Katz Americana

Kelly Kinzle

William & Teresa Kurau

Nathan Liverant and Son, LLC

Thomas R. Longacre Antiques

John Hunt Marshall

Ian McKelvey Antiques

Judith & James Milne

Newsom & Berdan Antiques

Jeff & Holly Noordsy Art and Antiques

Old as Adam

Olde Hope Antiques, Inc.

Randi Ona Antiques

Hercules Pappachristos

Period To Mod

Pewter & Wood Antiques

Sharon Platt American Antiques

Nancy & Gene Pratt

Thomas M. Rawson Antiques

Resser-Thorner Americana

Jeffrey Roelof

Peter Sawyer Antiques

David A. Schorsch - Eileen M. Smiles

Spencer Marks, Ltd.

Jef & Terri Steingrebe

Stephen Douglas at Walpole

Steven F. Still Antiques

Paul D. Sullivan Antiques

David Thompson Antiques & Art

Jeffrey Tillou Antiques

Jonathan Trace

Village Braider, Inc.

Michael Whittemore Antiques

Withington & Co.

Douglas Wyant Antiques, LLC

Ziebarth's Gallery



## August 8 – 10, 2024

THURSDAY & FRIDAY: 10AM – 7PM

SATURDAY: 10AM – 4PM

DoubleTree by Hilton  
Manchester, NH • 603.625.1000

[nhada.org](http://nhada.org)



THE 67<sup>TH</sup> ANNUAL  
New Hampshire Antiques Show

SPECIAL  
SHOW  
SECTION

# Welcome To The 67th Annual New Hampshire Antiques Show



As a first year president of the New Hampshire Antiques Dealers Association (NHADA), I cannot say that I am approaching this role without some trepidation. First, it is always difficult to succeed a popular leader who aptly steered this organization over many years. Our group owes Tommy Thompson a debt of gratitude for keeping NHADA a vital and professional trade organization which continues to attract what we believe are the greatest members of the antiques trade, as well as promoting the most highly anticipated show in New England, if not the country. As has been the case for the past 67 years, the Dealers Show includes those who represent many categories in the field of antiques. We strive to invite exhibitors who are both regular participants in many shows throughout the year, as well as those who limit themselves to only a few. In fact, we have some who only exhibit at this show. This cross-section of dealers, to-

gether with the show committee's encouragement that participants bring items from their own collections, keep the event fresh and exciting. For those who are concerned about the trade and the new price structures which we are encountering, I believe these actually represent great opportunities. Once again, it is enjoyable for buyers to be able to assemble a collection of quality antiques in an affordable way. This is, after all, how many of the great, pioneer collectors were able to do it back in the 1940s and beyond. Good dealers know how to adapt to these changes, and I am confident that this year's show will, once again, demonstrate the strength of our organization and the overall antiques business. For 2024, we are welcoming new dealers to the show: J&G Antiques (Amityville, N.Y.), Alan Katz Americana (Madison, Conn.), Randi Ona Antiques (Wayne, N.J.), Spencer Marks, Ltd. (Southampton, Mass.) and Ziebarth's

Antiques (Mount Horeb, Wis.). In addition, we are also pleased to welcome back Newsom & Berdan (Thomasville, Penn.). They represent a diverse group of top-ranked dealers who hail from different parts of the country. They are great additions to an already stellar group. I would be remiss not to mention that many other NHADA members have open shops in New Hampshire, and they are all looking forward to welcoming you and your business. Please take the opportunity to visit the organization's website to find their locations and hours of operation. Remember, to paraphrase Hyman Roth in *The Godfather Part II*, "this kind of government (New Hampshire, not Cuba) knows how to help business, to encourage it" and it remains, as always, free from sales tax!

*Sincerely,*  
**Richard Thorner, President**  
**New Hampshire Antiques**  
**Dealers Association**

## NHADA DEALER DIRECTORY

Melissa Alden, Portsmouth, NH.....	NH-38
Baker & Co. Antiques, Delmar, NY .....	NH-51
Bittner Antiques, Shelburne, VT .....	NH-35
Pam & Martha Boynton, Townsend, MA .....	NH-46
Hollis Brodrick, Portsmouth, NH.....	NH-13
Robert Burger Antiques, Mount Vernon, OH.....	NH-58
Cottage & Camp, Millerton, NY .....	NH-10
DeWolfe and Wood, Alfred, ME.....	NH-11
Early American Antiques, Canfield, OH .....	NH-56
Matt Ehresman, Wadsworth, OH.....	NH-52
J & G Enoksen, Amityville, NY .....	NH-27
Christopher & Bernadette Evans Antiques, Waynesboro, VA .....	NH-23
Brian J. Ferguson, Swansea, MA.....	NH-20
Robert T. Foley Antiques, Gray, ME .....	NH-34
Tucker Frey Antiques, Woodbury, CT .....	NH-28
Oliver Garland, Falmouth, MA.....	NH-12
Pat & Rich Garthoeffner, Lititz, PA.....	NH-50
Gemini Antiques, Ltd., Whitehouse Station, NJ .....	NH-4
Scott Bassoff and Sandy Jacobs, Swampscott, MA.....	NH-6
Bob Jessen & Jim Hohnwald, Fitzwilliam, NH.....	NH-48
Jewett-Berdan Antiques, Newcastle, ME .....	NH-30-31
Allan Katz Americana, Madison, CT.....	NH-33
Kelly Kinzle, New Oxford, PA.....	NH-7
William & Teresa Kurau, Lampeter, PA .....	NH-43
Nathan Liverant and Son, LLC, Colchester, CT.....	NH-54
Thomas R. Longacre Antiques, Marlborough, NH .....	NH-42
John Hunt Marshall, Westhampton, MA .....	NH-55
Ian McKelvey Antiques, So Windham, CT.....	NH-22
Judith & James Milne/At Home Antiques, Kingston, NY.....	NH-45

Newsom & Berdan Antiques, Thomasville, PA.....	NH-57
Jeff & Holly Noordsy Art and Antiques, Cornwall, VT .....	NH-17
Old as Adam, Providence, RI .....	NH-40
Olde Hope Antiques, Inc., New York, NY.....	NH-36
Randi Ona Antiques, Wayne, NJ .....	NH-53
Hercules Pappachristos, Derry, NH .....	NH-21
Period To Mod/Brennan & Mouilleseaux Antiques & Design, Briarcliff Manor, NY.....	NH-39
Pewter & Wood Antiques, Enfield, NH.....	NH-14
Sharon Platt American Antiques, New Castle, NH.....	NH-9
Nancy & Gene Pratt, Victor, NY.....	NH-41
Thomas M. Rawson Antiques, Cedar Rapids, IA.....	NH-47
Resser-Thorner Americana, Manchester, NH.....	NH-15
Jeffrey Roelof, Kalamazoo, MI .....	NH-44
Peter Sawyer Antiques, Exeter, NH .....	NH-3
David A. Schorsch - Eileen M. Smiles American Antiques, Woodbury, CT .....	NH-32
Spencer Marks, Ltd., Southampton, MA.....	NH-59
Jef & Terri Steingrebe, New London, NH .....	NH-16
Stephen Douglas at Walpole, Walpole, NH .....	NH-19
Steven F. Still Antiques, Manheim, PA .....	NH-8
Paul D. Sullivan Antiques, Manchester, NH.....	NH-18
David Thompson Antiques & Art, So. Dennis, MA.....	NH-24
Jeffrey Tillou Antiques, Litchfield, CT .....	NH-49
Village Braider, Inc., Plymouth, MA .....	NH-5
Michael Whittemore Antiques & Folk Art, Punta Gorda, FL .....	NH-25
Withington & Co., Cape Neddick, ME.....	NH-37
Douglas Wyant Antiques, LLC, Cassopolis, MI .....	NH-26
Ziebarth's Gallery, Mount Horeb, WI.....	NH-29



# PETER SAWYER ANTIQUES

17 COURT STREET | EXETER, NH 03833 | 603 772 5279



## Shelf Clock, circa 1815

David Wood, Newburyport, Massachusetts  
Significant for its completely original state of  
preservation and a vibrant dial. Seven-day  
movement in excellent running condition.

Height including finial: 37 1/2"

Literature: Palmer, Brooks.

*A Treasury of American Clocks.*

New York City: Macmillan 1973. Page 32

We specialize in fine New England Antiques  
from the late 18th and early 19th century.  
Generally, our shop is open Monday through Thursday  
and visitors are welcome to stop by anytime although  
a call ahead is best to insure we are open. We are  
always eager to buy fine New England objects.

*Peter Sawyer/Scott Bassett*  
*Petersawyer@comcast.net*  
*PeterSawyerAntiques.com*







## THE 67<sup>TH</sup> ANNUAL New Hampshire Antiques Show

SPECIAL  
SHOW  
SECTION



PERIOD TO MOD/BRENNAN & MOUILLE-  
SEAUX ANTIQUES & DESIGN, Briarcliff  
Manor, N.Y. — Period Windsor. Oilcloth  
upholstery. Cool Nineteenth Century paint.  
“Historic Surface,” whatever that means.



JEWETT-BERDAN ANTIQUES, New Castle, Maine —  
Paint-decorated box in original paint, circa 1850.



DAVID THOMPSON ANTIQUES & ART, South Den-  
nis, Mass. — Delightful “GOOD BOY” miniature wood  
pail or bucket in brilliant, original paint: bright yel-  
low with red stars, crossed American flags and two  
horses. Original metal bands in blue paint. Superb,  
remarkable condition. Height: 3½ inches or 5¼ in-  
ches with handle extended.



DOUGLAS WYANT ANTIQUES, Cassopo-  
lis, Mich. — Burl ladle, measuring 6½  
inches by 11 inches length.



J&G ANTIQUES, Amityville, N.Y. — Large gilt  
zinc and wrought iron apothecary trade sign  
that hung outside the pharmacy.

## Gemini Antiques Ltd.

Antique Toy, Bank & Folk Art Specialists

Bearded Mythical Agricultural Figure  
Rare Cast Iron Architectural Element  
By an Unknown New England Foundry  
Circa 1875 - 22” Tall x 14” Wide



“The Seasons of the Year”  
Spring-Summer-Fall-Winter  
Austrian Glazed Ceramic Figures  
Circa Late 1930’s - Tallest is 19 1/4”

Peoples Line Omnibus Tin Toy  
Made by the Althof-Bergmann Company  
New York - Circa 1875 - 21 1/2” Long



P.O. Box 635 - Oldwick, NJ 08858

Leon Weiss: 917-991-7352 or leonweiss@me.com • Steven Weiss: 212-729-0011 or sweiss57@me.com



SPECIAL  
SHOW  
SECTION

THE 67<sup>TH</sup> ANNUAL  
New Hampshire Antiques Show



Early 20th c. carved, painted and gilt eagle, 72"l, 25"t,  
stamped Burdine's 326 Harvard St Brookline Mass

**Village Braider Plymouth MA**

**508-746-9625**

Early 20th c. carved,  
painted and gilt eagle,  
46"w, 21"t







# THE 67<sup>TH</sup> ANNUAL New Hampshire Antiques Show

SPECIAL  
SHOW  
SECTION

## Scott Bassoff Sandy Jacobs ANTIQUES

[www.scottbassoffsandyjacobsantiques.com](http://www.scottbassoffsandyjacobsantiques.com)



Rare Vermont miniature  
cupboard in exuberant paint  
decoration. Ochre and red  
graining with green painted  
base in dry surface.  
15" wide by 20" tall  
by 7 1/2" deep

Swampscott, MA 01907  
603.801.5532 mobile  
[www.sandyjacobsantiques.com](http://www.sandyjacobsantiques.com)  
[sandyjnh1@gmail.com](mailto:sandyjnh1@gmail.com)



sandy jacobs  
antiques



KELLY KINZLE ANTIQUES, New Oxford, Penn. — Rare working model of the Red Jacket squirrel tail hand-drawn fire pumper from the late Nineteenth Century, Massachusetts.



VILLAGE BRAIDER, Plymouth, Mass. — Grade A Raw Milk, double-sided painted wood sign, 48 by 8 inches.

**NHADA.ORG**



JEF & TERRI STEINGREBE, New London, N.H. — A herd of painted cast iron garden rabbits.



WILLIAM K. & TERESA F. KURAU, Lampeter, Penn. — Original Currier & Ives large folio print "Fashionable Turn-Outs In Central Park." One of the nicest examples of this title that we have ever had the privilege of offering. We will have a great selection of our personal collection Curriers & Ives lithographs at the show.





# KELLY KINZLE

## Miniature Wall Clock with an Églomisé Panel Signed on the Dial, “David Brown/Providence”

This miniature wall clock stands at just 20 ½” tall and is housed in an elaborate case with its original eglomise panel. It is illustrated as “best” in *Fine Points of Furniture* by Albert Sack, who noted that it is “a unique clock of great rarity and desirability.” The painted glass panel depicts Justice holding a shield with the coat of arms of the United States. The works are by the noted Providence, Rhode Island inventor and clockmaker, David Brown (1781-1868). Housed in a mahogany case, circa 1820.

Illustrated: *Magazine Antiques*,  
August 1938, p. 97

Exhibited: New York, Metropolitan Museum  
of Art, *American Art from American Collections*,  
March 6 - April 1963, p. 48, no. 90, illustrated







# THE 67<sup>TH</sup> ANNUAL New Hampshire Antiques Show

SPECIAL  
SHOW  
SECTION



JEFF AND HOLLY NOORDSY, Cornwall, Vt. — Diminutive New England or New York state dome top box with an exuberant paint decoration, circa 1830.



DOUGLAS WYANT ANTIQUES, Cassopolis, Mich. — Good girl yellow and green pail.

JEFFREY TILLOU ANTIQUES, Litchfield, Conn. — Rare standing horse weathervane with cast zinc front, full-body molded copper, cast iron directional, attributed to J. Howard and Co., Bridgewater, Mass., circa 1868. Structurally in excellent condition, all original with traces of original sizing and gilt, honest and appealing historic surface. It measures 24 $\frac{3}{4}$  inches high by 31 $\frac{1}{2}$  inches wide.



STEPHEN / DOUGLAS AT WALPOLOE, Walpole, N.H. / Rockingham, Vt. — Selection of American woodenware from our collection featuring many early Nineteenth Century eating plates.



JEWETT-BERDAN ANTIQUES, New Castle, Maine — Home Baked Beans sign on tin.



Oil on canvas of a country lakeside by Samuel W. Griggs dated 1866. The painting is most likely a lakeside located in New Hampshire and is in excellent original condition. Overall Dimensions: 24  $\frac{3}{4}$ " by 32  $\frac{1}{2}$ "



Steven F. Still

*Antiques*

1717 South Colebrook Road • Manheim, PA 17545

Cell: (717) 682-0410

[www.stevenstillantiques.com](http://www.stevenstillantiques.com)







# Sharon Platt

## American Antiques

Period Decorative Arts for the Early American Home



Early 19th C. New England Pine  
Make-Do Bed Post Doll  
Provenance: The Late Robert Thayer Collection



Rare Classic 18th C. Man's Linen Ruffled Shirt



Fine Gold Posy Ring with Engraved Sentiment ~ "I Licke my Coyse" ~ I Like my Choice ~ English C. 1700



Booth No. 36

View [www.sharonplatt.com](http://www.sharonplatt.com) for Ad Details

sharon@sharonplatt.com • 603-430-7556 • PO Box 723, New Castle, NH 03854





# THE 67<sup>TH</sup> ANNUAL New Hampshire Antiques Show

SPECIAL  
SHOW  
SECTION

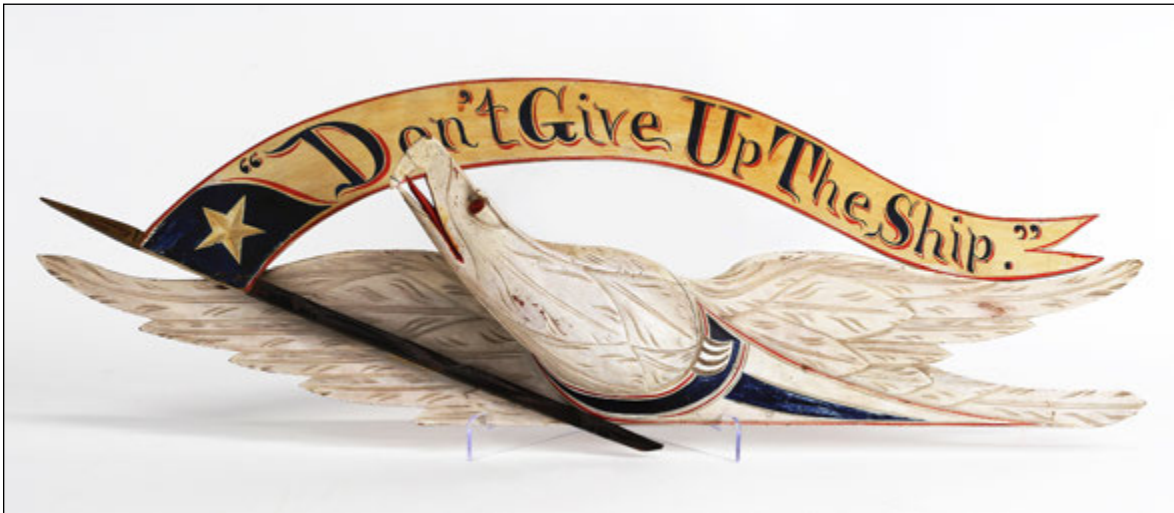


KELLY KINZLE ANTIQUES, New Oxford, Penn. — An English table orrery from the late Eighteenth Century with a hand-operated gear mechanism on a base with cabriole legs.



VILLAGE BRAIDER, Plymouth, Mass. — Reservoir Farm Dairy (front), Drink Lial's Milk (reverse), double-sided painted wood sign, 36 by 24 inches.

August 8 – 10, 2024  
[nhada.org](http://nhada.org)



BITTNER ANTIQUES, Shelburne, Vt. — John Haley Bellamy carved eagle, measuring approximately 25 inches wide.



Yard Sign August H. Kuck branches grown into letter forms Circa 1940

BOOTH #5

## COTTAGE + CAMP

23 Main Street, Millerton, NY 518.267.7060  
[Instagram@cottageandcamp](https://www.instagram.com/cottageandcamp)





SPECIAL  
SHOW  
SECTION

THE 67<sup>TH</sup> ANNUAL  
New Hampshire Antiques Show



Please Join  
**DeWolfe  
and Wood**  
In Celebrating the  
**250th  
Anniversary**  
of the  
**Shakers**

**DeWolfe & Wood Rare Books**

Route 202, P.O. Box 425, Alfred, ME 04002  
(207) 490-5572 • [www.dewolfeandwood.com](http://www.dewolfeandwood.com)  
[dewolfeandwood@roadrunner.com](mailto:dewolfeandwood@roadrunner.com)

Successors to Tuttle's of Vermont serving collectors and readers since 1830  
Find the best in rare books and ephemera at [ABAA.org](http://ABAA.org)







## THE 67<sup>TH</sup> ANNUAL New Hampshire Antiques Show

SPECIAL  
SHOW  
SECTION



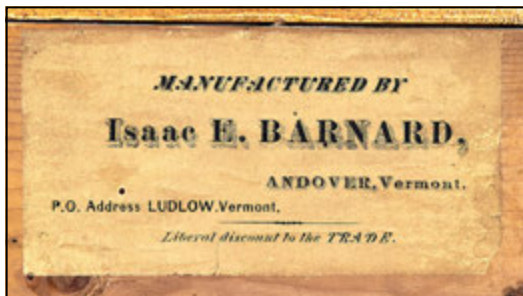
**JEFFREY TILLOU ANTIQUES**, Litchfield, Conn. — Late Federal painted checkerboard top candlestand, maple and pine, paint decorated, New England or New York state, circa 1820-30. Overall, in excellent condition, some wear and loss to painted surface. It has a swivel game piece drawer attached to the underside, above a turned shaft supported by carved cabriole-shaped legs. The top has penwork inscriptions around the outer edges of the gameboard. It measures 27½ inches high, 20¼ inches wide, 20½ inches deep. Provenance: The Collection of Dr Donald F. Moylan.

*The 67th Annual*

New Hampshire Antiques Show  
**August 8 – 10, 2024**

THURSDAY & FRIDAY: 10AM – 7PM

SATURDAY: 10AM – 4PM



**PETER SAWYER ANTIQUES**, Exeter, N.H. — Nineteenth Century miniature paint-decorated chest with paper label of Isaac Barnard, Andover, Vt.



**JEWETT-BERDAN ANTIQUES**, New Castle, Maine — Early schoolgirl watercolor on paper of young lady and her woolly sheep.



**STEPHEN / DOUGLAS AT WALPOLOE**, Walpole, N.H. / Rockingham, Vt. — English slipware decorated loaf dish, late Eighteenth Century.



Rare 19th century Trompe L'oeil Cat Painting

# OLIVER GARLAND

*Please come  
and see this year's  
fresh offerings at  
Booth #17*

Inquiries: 774-255-0199

odgarland@gmail.com

Mail: PO Box 763

Falmouth, MA 02541





## Hollis E. Brodrick

Arts & Artifacts of Early New England



A selection of 18thc glasswares, c 1740 to 1790, including a rare enameled white glass decanter (probably Bristol) decorated in black, with ruins, and an American flag!



Part of a selection of colonial period ceramics - including early Delftware, a small Bellarmine jug (6 1/2 inches!) and an English enameled salt glaze cream jug. dates range from 1670 to 1765...



Rare early lighting to include: rare pr of tall (19 in!) hogscraper candlesticks- signed "Bill"... colonial period- wedding band hogscraper candlesticks with octagonal and round bases- ca 1740-70... rare early tabletop wooden screw post double candle light; etc



Fine relic- English mortuary sword c1650, dug in a cellar hole many decades ago, in West Newbury, Mass!



Many early domestic items, including: Early painted woodenware, early New England redware, colonial New England pipe tongs, small 1740 comb decorated mirror, and an American pewter reflector scone.



Mailing Address: PO Box 30 | Portsmouth, NH 03802 | 603-828-6158

All items subject to prior sale



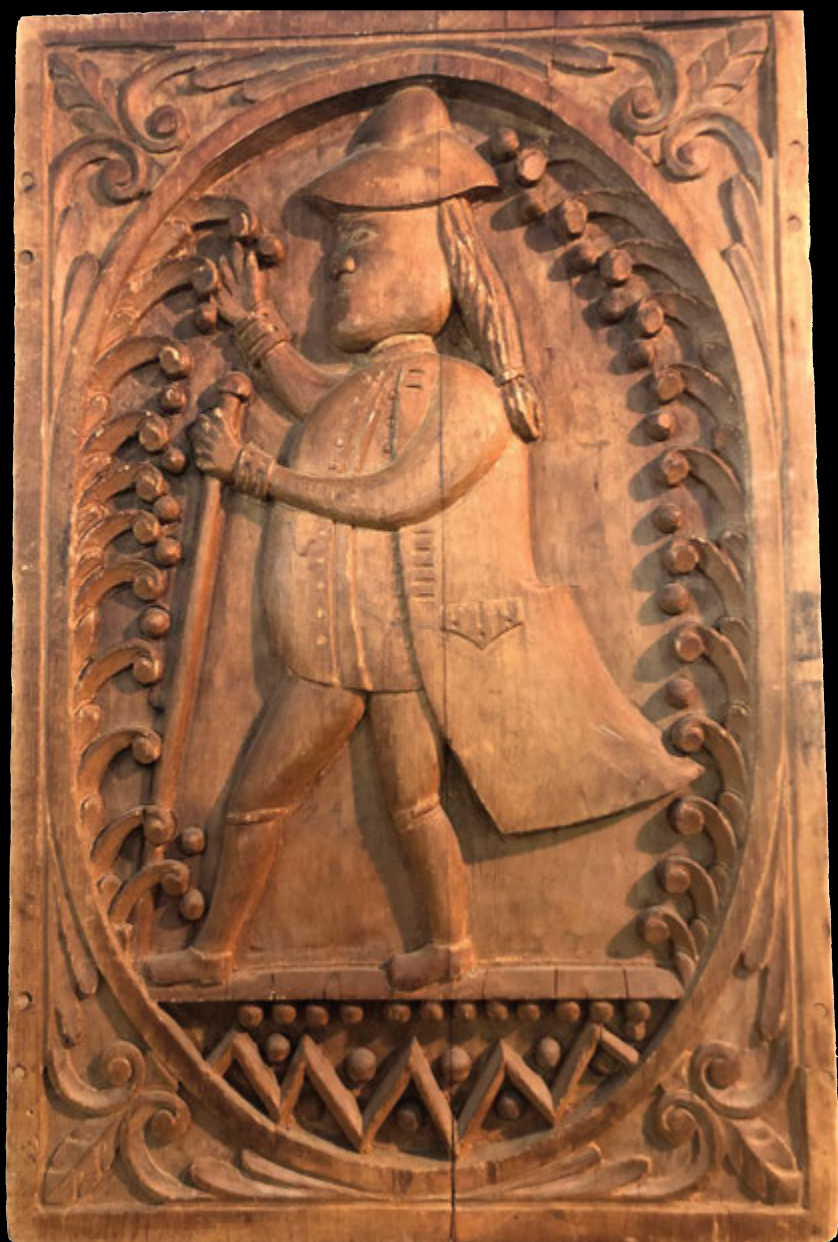




THE 67<sup>TH</sup> ANNUAL  
New Hampshire Antiques Show

SPECIAL  
SHOW  
SECTION

# Pewter & Wood Antiques



**Gentleman with Walking Stick,  
in long coat and hat.**  
Hand carved and chiseled.  
23" l. x 15" w. 1 3/4"

Barbara Boardman Johnson  
Enfield, NH (602) 677-5686  
**BOOTH #7**



PETER SAWYER ANTIQUES, Exeter, N.H. — An amazing little dwarf tall case clock by Joshua Wilder, Hingham, Mass., circa 1815.

*The 67th Annual*  
**New Hampshire  
Antiques Show**  
**August 8 – 10, 2024**  
THURSDAY & FRIDAY:  
10AM – 7PM  
SATURDAY: 10AM – 4PM  
DoubleTree by Hilton  
Manchester, NH  
603.625.1000  
[nhada.org](http://nhada.org)



JUDITH & JAMES MILNE ANTIQUES, Kingston, N.Y. — Unusual, possibly unique North Wind weathervane, 56 inches long by 25 inches high.



JEF & TERRI STEINGREBE, New London, N.H. — Collection of Taghkanic baskets.



# The Battle of Lexington and Concord



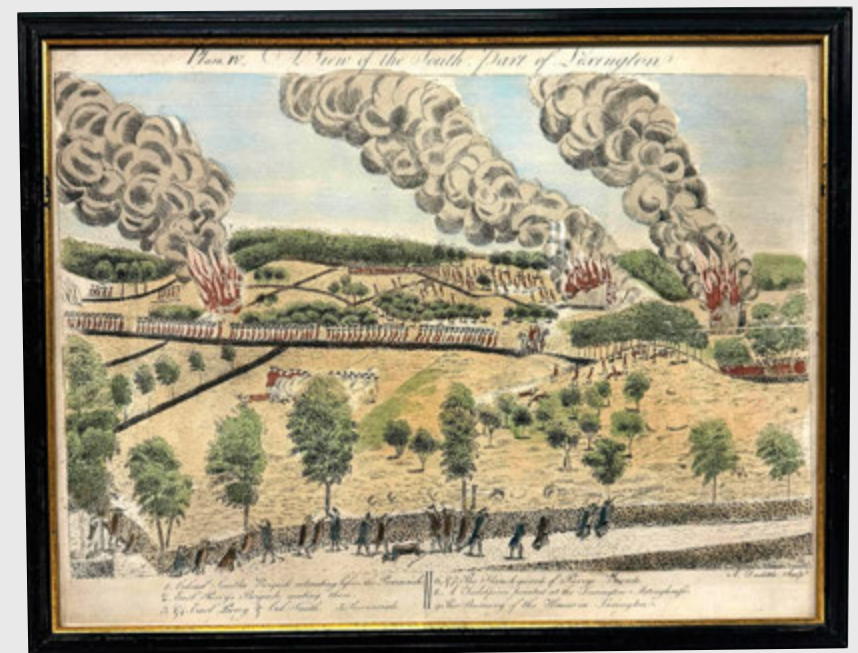
The Battle of Lexington



A View of the Town of Concord



The Engagement at the North Bridge in Concord



A View of the South Part of Lexington

Colored collotypes, hand-stenciled color, Hammer and Anvil rag paper, published by Goodspeed's Book Shop (Boston), 1960, 15.25" x 19.75" (sight) and limited to 225 sets printed by the Meriden Gravure Company.

They are housed in frames supplied by Goodspeed's and labelled by the Book Shop on the verso (one having a later framing date than the other three). The frames are in very good condition with minor flaws.

Colonial revival printing has always been an interest to us, and Goodspeed's began venturing into producing restrikes of important 18th century prints as far back as 1903, when it employed Sidney Lawton Smith to re-make the Lexington and Concord Doolittle engraving plates (and printed in a now-rare edition of 75). We are offering later reproductions which Goodspeed's copied from the original Doolittle engravings owned by the Connecticut Historical Society.

It is virtually impossible to ever own a complete, 1775 set, and if we did, we would be retiring from the Americana business! Even in 1923, the originals were considered "so rare as to torment the dreams of collectors." *Harold Murdock, The Nineteenth of April, 1775.*

RESSER-THORNER  
AMERICANA

*A single-owner shop in the New England tradition*



603-540-4712

695 River Road, Manchester, NH 03104

*By Appointment*







THE 67<sup>TH</sup> ANNUAL  
New Hampshire Antiques Show

SPECIAL  
SHOW  
SECTION



DeWOLFE AND WOOD, Alfred,  
Maine — Shaker sewing items



PRATT'S ANTIQUES, Victor, N.Y. — Nineteenth  
Century covered burl sugar bowl in nice surface.

**August 8 – 10, 2024**  
THURSDAY & FRIDAY:  
10AM – 7PM  
SATURDAY: 10AM – 4PM



RESSER-THORNER AMERICANA, Manches-  
ter, N.H. — Nineteenth Century boxed compass  
by John Trundy (1800-1873) and Thomas Salt-  
er Bowles (1785-1853) of Portsmouth, N.H.,  
5½-inch diameter, 3 inches high, fine condi-  
tion. Both known makers signed the paper  
directional, which seems a bit unusual. Per-  
haps Trundy purchased said directional and  
then completed the compass, adding his signa-  
ture to its middle.



VILLAGE BRAIDER, Plymouth, Mass. — Early Twentieth Century Eat Pure Honey sign, double-  
sided painted wood, 35 by 10 inches.



**Jef & Terri  
Steingrebe**

P.O. Box 2268  
New London, NH 03257  
603-491-1767  
Jeffreylance53@gmail.com

**"CATS"**  
Maude Lewis  
1903- 1970  
Nova Scotia  
Oil on  
beaver board





# Keep Your Lamps Trimmed and Burning

We're Jeff and Holly in booth #32 and we'll leave the light on for you.



Extremely rare whale oil lamp filler blown at a Southern, NJ glass house, C. 1830.  
Ex. Phil Cortina, Malclom Polis and Barry D. Hogan Collections

## Jeff and Holly Noordsy

18 Route 74, Cornwall, VT

[www.noordsyantiques.com](http://www.noordsyantiques.com) • [jeffnhol@gmail.com](mailto:jeffnhol@gmail.com) • 802-462-2901





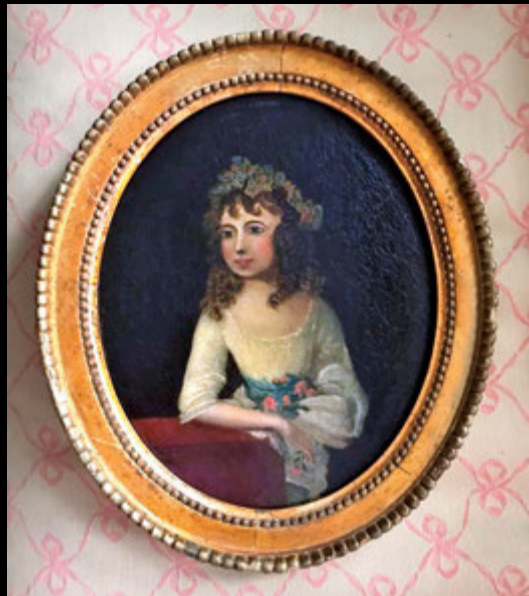
THE 67<sup>TH</sup> ANNUAL  
New Hampshire Antiques Show

SPECIAL  
SHOW  
SECTION



Paul Sullivan  
ANTIQUES

PO Box 3773, Manchester, NH 03105 603-669-8886



*See you on the Main Aisle*



KELLY KINZLE ANTIQUES, New Oxford, Penn. — Great mahogany model of a speedboat from the 1950s, 54 inches long.



DeWOLFE AND WOOD, Alfred, Maine — Shaker ephemera



J&G ANTIQUES, Amityville, N.Y. — From the collection of Dr James McCleery, this Mason Challenge Grade brant, circa 1910, along with this flat-bottom "Blair"-type wigeon by A.B. Vance, branded with W.P. Patton.



STEVEN STILL ANTIQUES, Manheim, Penn. — Exceptional paint-decorated plank button settee, circa 1840. This settee, from the Mid-Atlantic states, is in excellent original condition.



Walpole, New Hampshire

603-903-5023

Rockingham, Vermont

# STEPHEN / DOUGLAS



*Dutch delftware King William lobed charger, ca. 1690. - 13.5" diameter*



*Dutch delftware Queen Mary lobed charger, ca. 1690. - 13.5" diameter*



*Dutch delftware barber bowl with unusual utensil decoration, 18th century - 9" diameter*

Offering 17th, 18th, and 19th  
century American Antiques.



*Pa. wool needlework table mat of extraordinary design 19th century*



*Large carved wooden maiden, probably a ship figure head. American, 2nd half of the 19th century - 40" high*





THE 67<sup>TH</sup> ANNUAL  
New Hampshire Antiques Show

SPECIAL  
SHOW  
SECTION



PETER SAWYER ANTIQUES, Exeter, N.H. — Old Man of the Mountain by George McConnell.

August 8 - 10  
nhada.org



DeWOLFE AND WOOD, Alfred, Maine — Shaker bottles



JEWETT-BERDAN ANTIQUES, New Castle, Maine — A wooden wall pocket in the original polychrome paint with applied bird, circa 1880.



ZIEBARTH'S ANTIQUES, Mount Horeb, Wis. — Half-nickel-plated Winchester Model 1866, circa 1971.



PRATT'S ANTIQUES, Victor, N.Y. — Nineteenth Century sailor carved dog whistle.

BRIAN J. FERGUSON ANTIQUES

1 Main Street | Swansea, MA 02777 | 508-674-9186 | bfergusonswansea@gmail.com







HERCULES J. PAPPACHRISTOS

ART & ANTIQUES



(603) 548-5959 herculesderry@comcast.net



Benjamin Champney (American, 1817-1907)  
Grapes at Dusk, North Conway, N. H.

Painted From Artist's Porch, Looking Toward Moat Mountain, oil on canvas, 24" x 18"



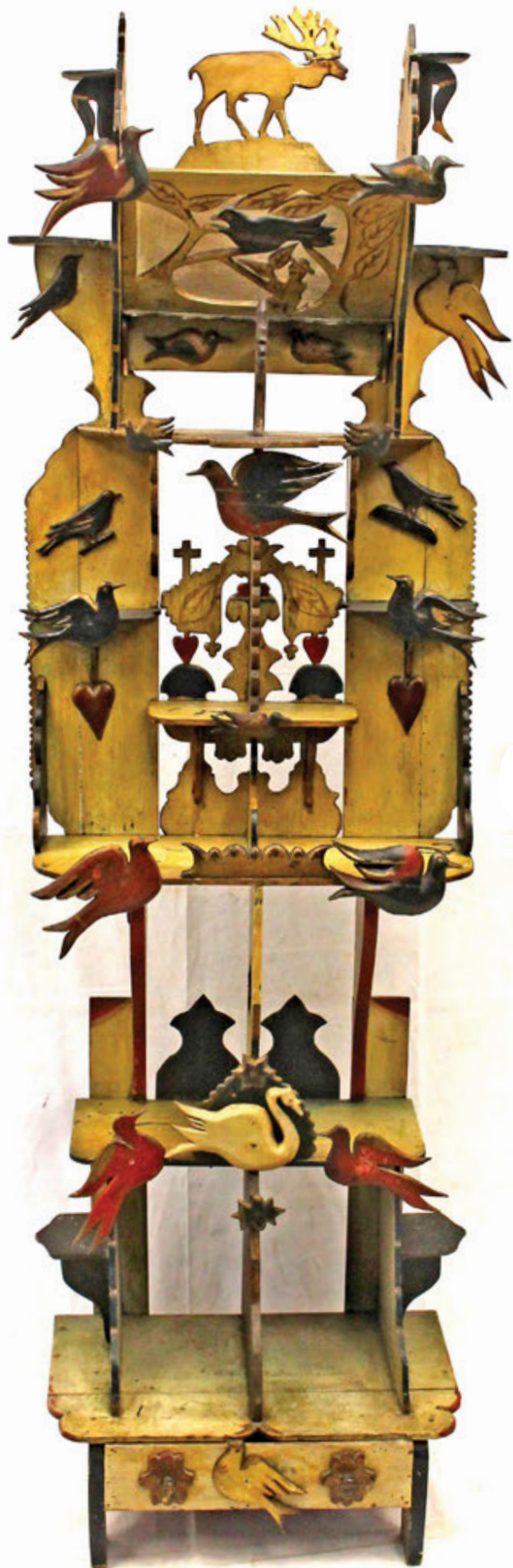


THE 67<sup>TH</sup> ANNUAL  
New Hampshire Antiques Show

SPECIAL  
SHOW  
SECTION

# IAN MCKELVEY ANTIQUES

South Windham, CT • 860-781-0081



**A wonderful carved and painted folk art shelf,  
Pennsylvania, C. 1880.**

With an inscription reading "Why are you sitting so sad" and "Some day I will wander back again." It's believed to have been crafted as a gift. Standing 72" tall and boasting over 30 carvings, it's a rather extraordinary creation born from love.



**SCOTT BASSOFF / SANDY JACOBS, Swampscott, Mass. —** Finely carved wooden plaque with trees, baskets, horses and snake. The carving measures 36½ by 19 inches.



**JUDITH & JAMES MILNE ANTIQUES, Kingston, N.Y. —** A carved and painted paddlewheeler, *The Mississippi*, 10 inches high by 16 inches long.



**VILLAGE BRAIDER, Plymouth, Mass. —** Heated Cabin sign, double-sided painted wood, 28 by 9 inches.



**PETER SAWYER ANTIQUES, Exeter, N.H. —** Haying in the Conway Valley with Mount Washington in the background by Benjamin Champney.





## Christopher and Bernadette Evans Antiques Folk Art and Country Americana



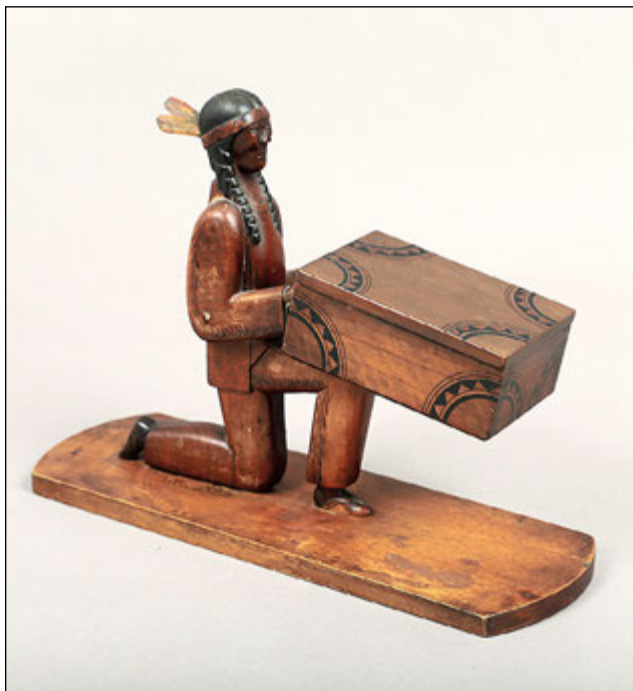
Now Booth 31; [www.candbevansantiques.com](http://www.candbevansantiques.com)  
[cevans62@yahoo.com](mailto:cevans62@yahoo.com) (240)-818-7810





# THE 67<sup>TH</sup> ANNUAL New Hampshire Antiques Show

SPECIAL  
SHOW  
SECTION



**JEFFREY TILLOU ANTIQUES, Litchfield, Conn. —** Carved cigarette and tobacco holder, cherry and birch, highlighted with paint, American, early Twentieth Century, great condition, retaining a wonderful natural patina. In the form of a Native American kneeling while holding a box, it was most likely used for storing cigarettes. It measures 9 1/4 inches high by 12 3/4 inches wide.

**August 8 – 10, 2024**

**THURSDAY & FRIDAY: 10AM – 7PM**

**SATURDAY: 10AM – 4PM**

**STEPHEN / DOUGLAS AT WALPOLOE, Walpole, N.H. / Rockingham, Vt. —** Mammoth Staffordshire pitcher, possibly a store display, with well-done early tin make-do handle.



**JEFF AND HOLLY NOORDSY, Cornwall, Vt. —** Graceful Western New York State redware jar with a pinkish glaze, circa 1840.



**JEWETT-BERDAN ANTIQUES, New Castle, Maine —** Early hooked rug of two black horses.



**BOB JESSEN & JIM HOHNWALD, Fitzwilliam, N.H. —** Set of six ladder back chairs and table.

**SIDE PORTRAIT** attr. to JUSTUS DA LEE, c.1840  
in original, extraordinary paint-decorated wood frame mimicking tortoise-shell. Pencil and watercolor on paper with gum-arabic highlights to the dress. It has the characteristic black spandrels with faint bleed of blue into the light ground as seen in Justus Da Lee's work. (See "Side Portrait Painters: Differentiating the Da Lee Family Artists," Brownstein and Shushan, *The Magazine Antiques*, July/August 2011) Born in 1793 in New York, Da Lee in later years moved West, appearing in the 1860 Census in Aurora, Illinois, where he is listed as "blind." He relocated to Eden, Fond du Lac, Wisconsin to live with his daughter, where he died in 1878. It is significant that this work was found in Wisconsin, and merits speculation that it might have been of sentimental importance to the Da Lee family. It was recently obtained from a private, old Wisconsin collection. Overall measurements, including frame: 8 1/8" x 7 5/8". Original cover glass and wood backboard.

## DAVID THOMPSON ANTIQUES & ART

David Thompson      Jane Turano-Thompson  
802-238-6987      South Dennis MA      dtjt@sover.net





SPECIAL  
SHOW  
SECTION

THE 67<sup>TH</sup> ANNUAL  
New Hampshire Antiques Show



Michael Whittemore  
Antiques & Folk Art

980 Coronado Drive, Punta Gorda, Florida 33950  
860-428-1135

***Fish Weathervane***

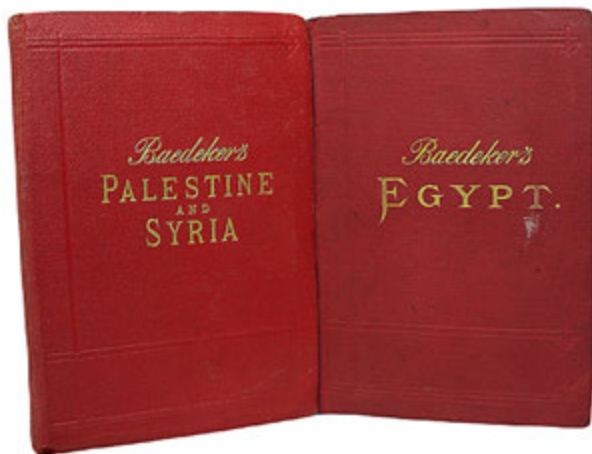
Attrib. to J.W. Fiske & Co. New York, NY  
6" D x 12" H x 38" L Original As Found Untouched Condition  
c. 1875 - 1885





# THE 67<sup>TH</sup> ANNUAL New Hampshire Antiques Show

SPECIAL  
SHOW  
SECTION



DeWOLFE AND WOOD, Alfred, Maine — Many Baedeker's.



PETER SAWYER ANTIQUES, Exeter, N.H. — A boldly figured tiger maple stand in original finish, New Hampshire, circa 1800.



BAKER & CO. ANTIQUES, Lake George, N.Y. — Smoke paint-decorated apple box with a large collection of stone vegetables.



OLIVER GARLAND, Falmouth, Mass. — Large late Seventeenth Century Dutch Wanli-style Delft charger.



JEWETT-BERDAN ANTIQUES, New Castle, Maine — Folk art presentational piece of boy with baseball and bat pictured in the book *The Perfect Game*.

August 8 – 10, 2024

## Douglas R Wyant Antiques

920 E State Street | Cassopolis, MI 49031 | 269-214-6354



One Man's Idea by Adolph Glass from Beechwood, Wisconsin built in the 1920's, 93" long x 30" wide x 46" high

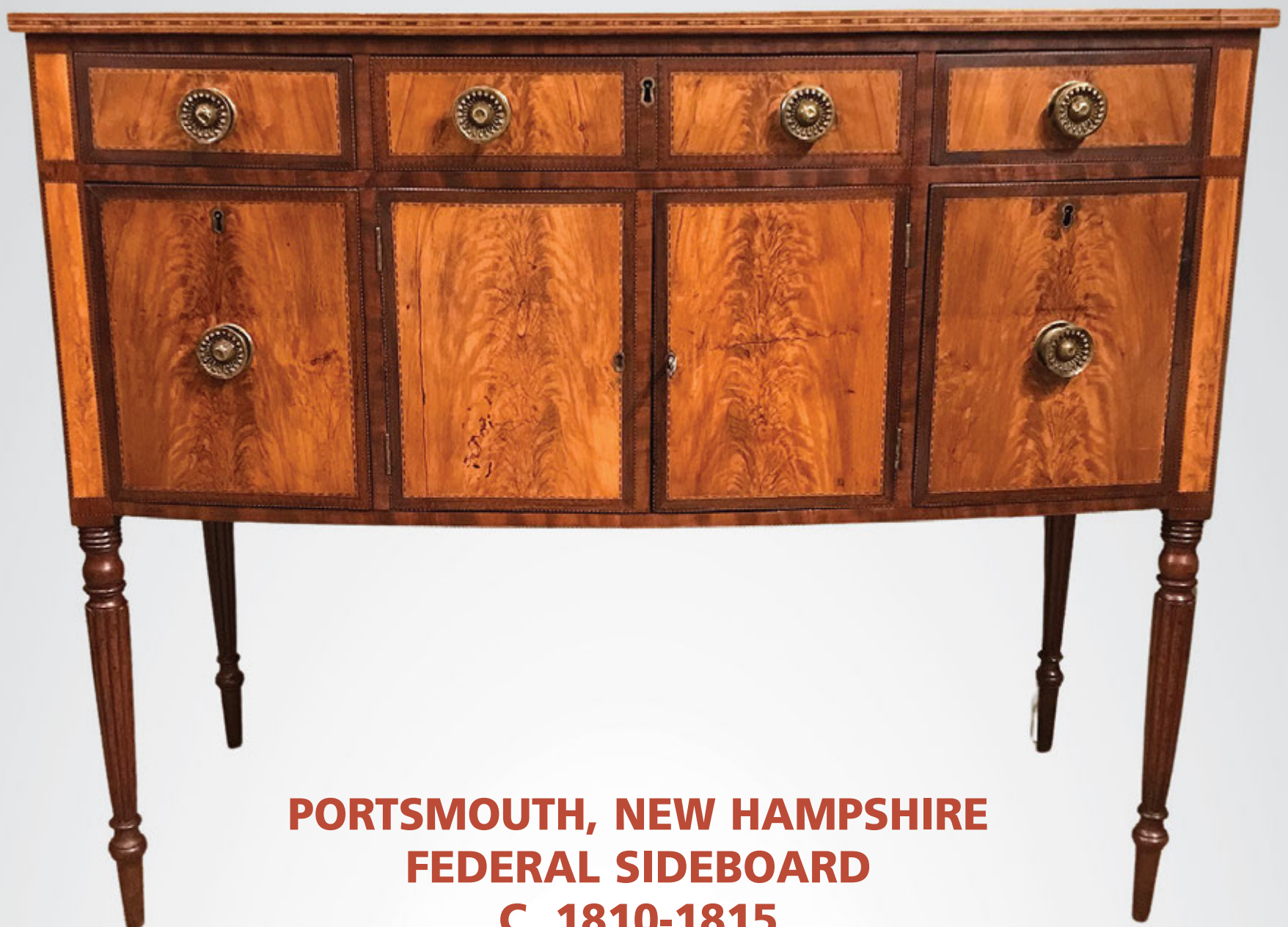


SPECIAL  
SHOW  
SECTION

THE 67<sup>TH</sup> ANNUAL  
New Hampshire Antiques Show



516-582-1849 • [antiq54@aol.com](mailto:antiq54@aol.com)  
[www.jandgantiques.com](http://www.jandgantiques.com)



**PORTSMOUTH, NEW HAMPSHIRE  
FEDERAL SIDBOARD  
C. 1810-1815**

This exquisite, small-sized, bowfront sideboard packs a punch with its vibrant feathered birch panels and complex inlays. The finely reeded legs, beautiful single-board mahogany top and pleasing nut-brown patina add to its appeal. The piece is in excellent condition and the brass knobs are original.

For similar examples, reference plates 36 and 36a from  
Portsmouth Furniture – Masterworks from the New Hampshire Seacoast

**by Brock Jobe**

H. 37 ¾ in. W. 46 in. D. 21 ¼ in.

Offering antique period furniture, vintage decoys, folk art and accessories.

**VISIT US AT THE NHADA SHOW! – BOOTH #54**

Amityville, New York | By appointment – (516) 582-1849 | [antiq54@aol.com](mailto:antiq54@aol.com) | [jandgantiques.com](http://jandgantiques.com)





# THE 67<sup>TH</sup> ANNUAL New Hampshire Antiques Show

SPECIAL  
SHOW  
SECTION



**NATHAN LIVERANT AND SON, Colchester, Conn. —** Figured maple country Sheraton drop leaf table, New England, 1820-45.



**JEWETT-BERDAN ANTIQUES, New Castle, Maine —** We will have a selection of Nineteenth Century dolls.

**JEFF AND HOLLY NOORDSY, Cornwall, Vt. —** Providence (R.I.) Marine Society certification dated 1820.

**IAN McKELVEY ANTIQUES, South Windham, Conn. —** Oversized general store display, Nineteenth Century, tinsmith-made chamber stick.



**PERIOD TO MOD/BRENNAN & MOUILLESEAUX ANTIQUES & DESIGN, Briarcliff Manor, N.Y. —** If it's as-is ya want, it's as-is we got.



## TUCKER FREY ANTIQUES

256 MAIN STREET SOUTH  
WOODBURY, CT 06798  
(203) 263-5404

TFREY90549@AOL.COM

OPEN WED-SUN 11-4

A small Queen Anne cherry chest on frame with a well scalloped base and bandy legs. Connecticut River Valley circa 1760-80. Ex Nathan Liverant.





SPECIAL  
SHOW  
SECTION

THE 67<sup>TH</sup> ANNUAL  
New Hampshire Antiques Show



Your Source For:  
Native American Art  
Historic Militaria  
Antique Americana



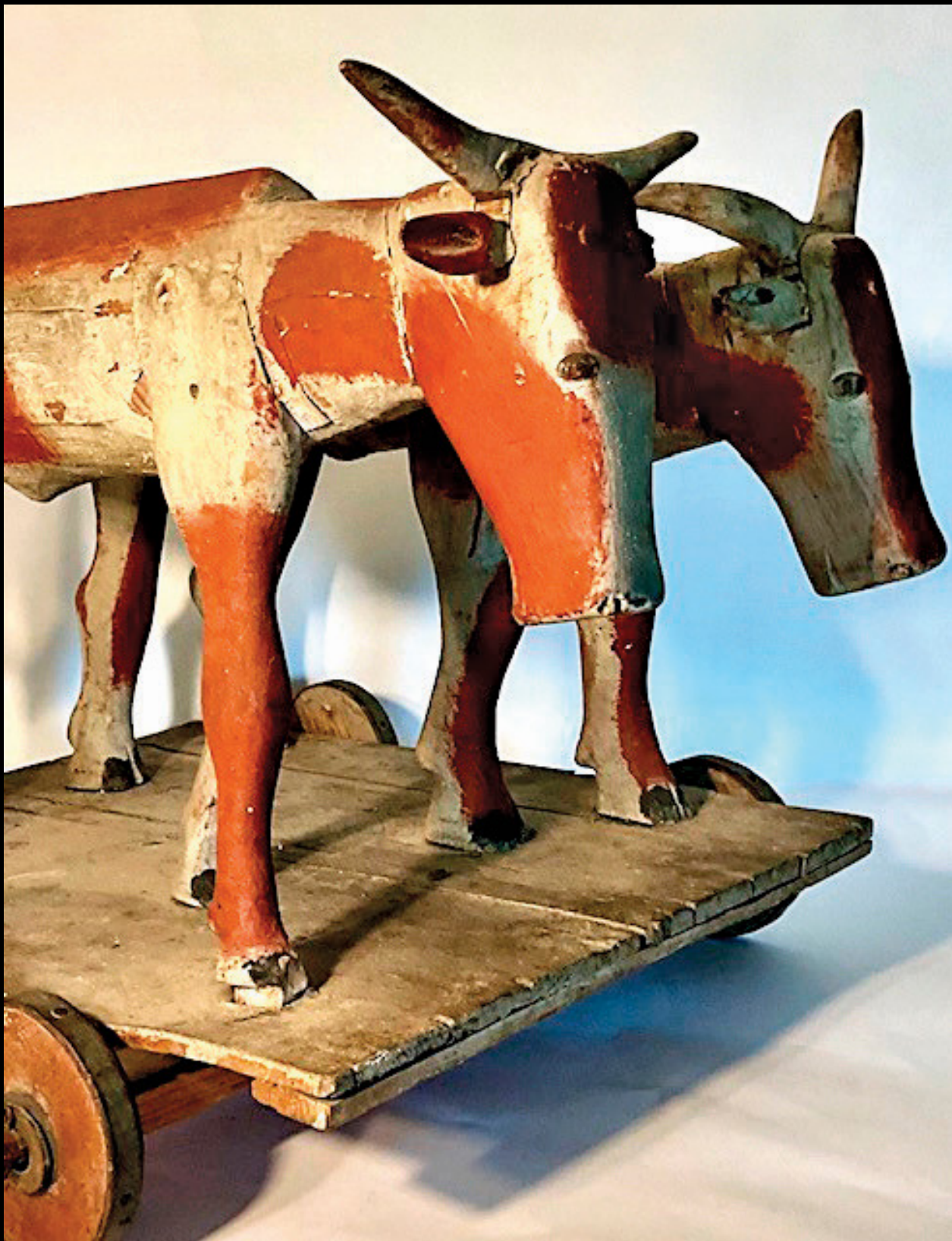




THE 67<sup>TH</sup> ANNUAL  
New Hampshire Antiques Show

SPECIAL  
SHOW  
SECTION

# Jewett-Berdan



**Booth #47**

**Thomas J. Jewett**



15 Hopkins Hill Road  
Newcastle, Maine 04553  
[jewett-berdan@roadrunner.com](mailto:jewett-berdan@roadrunner.com)  
[www.Jewett-Berdan.com](http://www.Jewett-Berdan.com)  
(207) 563-3682

**Charles P. Berdan**





SPECIAL  
SHOW  
SECTION

THE 67<sup>TH</sup> ANNUAL  
New Hampshire Antiques Show



# Jewett-Berdan



Exceptional folk portrait of young girl in blue dress, Prior Hamblin School, circa 1850.  
A monumental size on artist board measuring 23" x 20" sight, and framed 31" x 27".

Thomas J. Jewett



15 Hopkins Hill Road  
Newcastle, Maine 04553  
jewett-berdan@roadrunner.com  
www.Jewett-Berdan.com  
(207) 563-3682

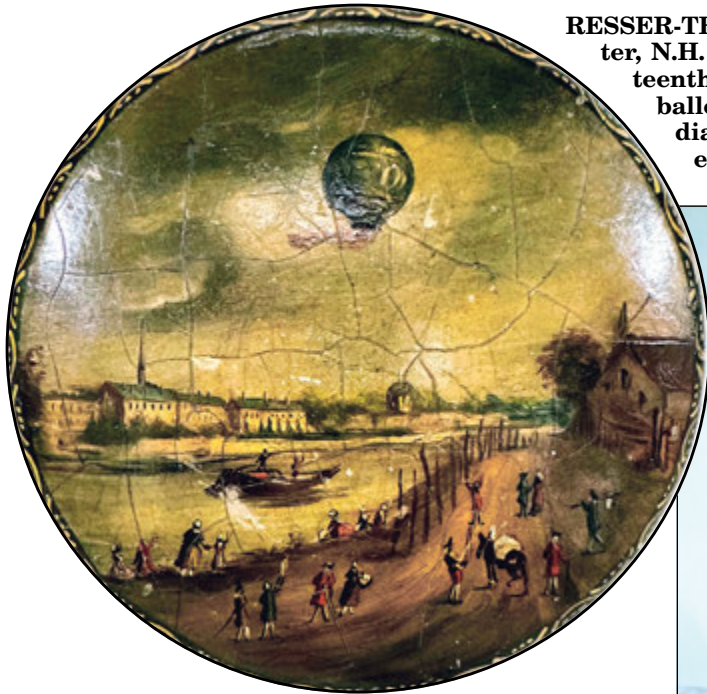


Charles P. Berdan



# THE 67<sup>TH</sup> ANNUAL New Hampshire Antiques Show

SPECIAL  
SHOW  
SECTION



**RESSER-THORNER AMERICANA, Manchester, N.H.** — A Ballooning Disaster, a Nineteenth Century snuffbox portraying a balloon engulfed in smoke, 3-inch diameter, some craquelure, decorated surround and edges.



**PERIOD TO MOD/BRENNAN & MOUILLESEAUX ANTIQUES & DESIGN, Briarcliff Manor, N.Y.** — Catwoman returns!



**JEWETT-BERDAN ANTIQUES, New Castle, Maine** — Pair of carved wooden and paint angels.



**DOUGLAS WYANT ANTIQUES, Cassopolis, Mich.** — Four-color painted basket.



**SCOTT BASSOFF / SANDY JACOBS, Swampscott, Mass.** — Shaker box in wonderful red paint, measuring 8-7/8 by 6 by 3 1/4 inches.

**DAVID A. SCHORSCH EILEEN M. SMILES**

— FINE AMERICANA —

358 Main Street South, Woodbury, CT 06798 • 203.982.7574  
contact@schorsch-smiles.com • www.schorsch-smiles.com  
Antiquarian Equities, Inc.





SPECIAL  
SHOW  
SECTION

THE 67<sup>TH</sup> ANNUAL  
New Hampshire Antiques Show



VILLAGE BRAIDER, Plymouth, Mass. — Ice Cream sign, painted wood, 35 by 20½ inches.



SPENCER MARKS, LTD., Southampton, Mass. — This unusual sterling dish was made by Whiting Mfg. Co. from New York City in the 1870s and is in the form of an outspread bird wing along with an applied, figural bird.



PEWTER & WOOD ANTIQUES, Enfield, N.H. — A dog pull-toy, jointed, bold yellow and red paint, 15 inches long by 7 inches high.



DOUGLAS WYANT ANTIQUES, Cassopolis, Mich. — American eagle plaque, 19½ inches wide by 13½ inches high.

**ALLAN KATZ**  
Americana



**Hessian Soldier Whirligig**

American

Unidentified maker

Probably Pennsylvania

Circa 1820

Carved and polychrome painted white pine with metallic foil applique.

Height of figure: 20"

Ex. Don Walters

**Allan & Penny Katz**

363 Boston Post Road, Madison, CT 06443

By Appointment

Tel. (203) 494-3359 folkkatz@gmail.com

Exhibiting on Incollect.com





THE 67<sup>TH</sup> ANNUAL  
New Hampshire Antiques Show

SPECIAL  
SHOW  
SECTION



BITTNER ANTIQUES, Shelburne, Vt. — “Chatham/Columbia” painted road sign, circa 1875, which was located in the area known today as Florham Park; the New Jersey town of Columbia existed until 1879. The sign measures approximately 38 inches wide.



PRATT'S ANTIQUES, Victor, N.Y. — Nineteenth Century brightly painted chalkware deer.



JEFF AND HOLLY NOORDSY, Cornwall, Vt. — A Fulton, N.Y., 5-gallon stoneware water cooler with double love birds and a merchant stamp, circa 1855.



JEWETT-BERDAN ANTIQUES, New Castle, Maine — Details of a Civil War-era cast iron plaque of a shield and eagle in old red paint.



STEPHEN / DOUGLAS AT WALPOLOE, Walpole, N.H. / Rockingham, Vt. — New England paint-decorated dome lid trunk, circa 1825.

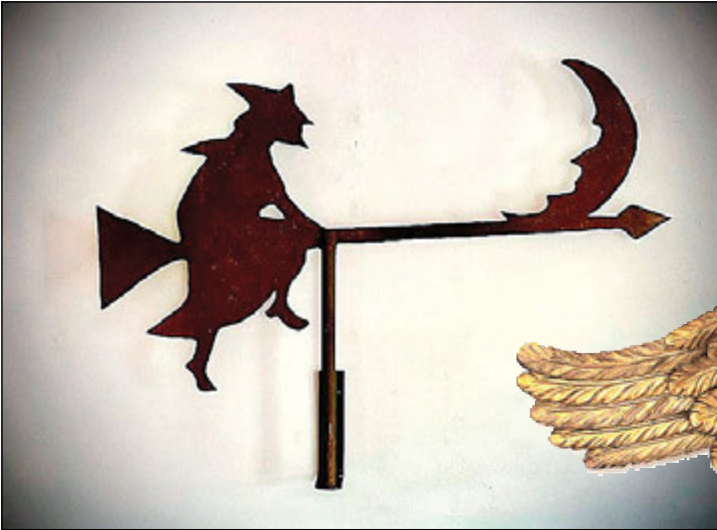


*Finely Carved and Painted Codfish. 25 1/2" long by 10 1/4" high.*

**ROBERT T. FOLEY ANTIQUES—BOOTH 57**

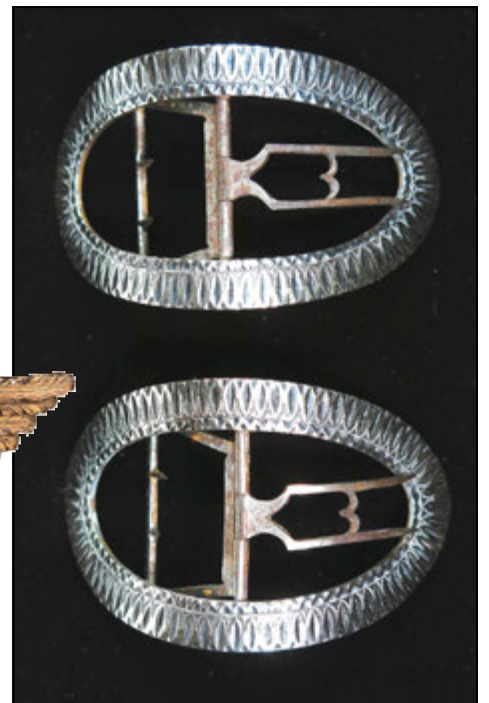
GRAY, MAINE  
(207)-756-4290



SPECIAL  
SHOW  
SECTIONTHE 67<sup>TH</sup> ANNUAL  
New Hampshire Antiques Show

JEWETT-BERDAN ANTIQUES, New Castle, Maine — Sheet iron witch and moon weathervane, circa 1930s.

IAN McKELVEY ANTIQUES, South Windham, Conn. — Large early to mid-Nineteenth Century — rather fantastic!



DAVID THOMPSON ANTIQUES & ART, South Dennis, Mass. — Pair of early shoe buckles originally owned by Anthony Low (1724-1802) of Warwick, R.I., with family history. Possibly worn on his wedding day in 1766. English-made, worked and stamped silver over brass with wrought iron tongues. Excellent condition. They are 3-1/8 inches long. Recently purchased privately from Low family descendants. Genealogy provided to purchaser.

*The 67th Annual*  
New Hampshire Antiques Show

**August 8 – 10, 2024**

THURSDAY & FRIDAY: 10AM – 7PM

SATURDAY: 10AM – 4PM

DoubleTree by Hilton  
Manchester, NH • 603.625.1000

[nhada.org](http://nhada.org)

RESSER-THORNER AMERICANA, Manchester, N.H. — A check issued and signed by Orville Wright, 1936, in fine condition.



A FAMILY TRADE SINCE 1960

# Bittner Antiques

SHELburne, VT

Luigi Lucioni, *Shelburne House*, 1937.  
Oil on canvas, 20 x 32 inches.

**Visit our shop:** Wed-Sat 10-4 | 2997 Shelburne Road, Shelburne, VT 05482

802.489.5210

[www.bittnerantiques.com](http://www.bittnerantiques.com)

[info@bittnerantiques.com](mailto:info@bittnerantiques.com)





THE 67<sup>TH</sup> ANNUAL  
New Hampshire Antiques Show

SPECIAL  
SHOW  
SECTION

OLDE  
HOPE

AMERICAN FOLK &  
DECORATIVE ARTS  
OF DISTINCTION



## Goddess of Liberty Weathervane

Att. to J.W. Fiske, New York, c.1875

Ht. 44 1/2", W. 19 1/2"

Molded copper with a fine  
weathered surface of verdigris  
and traces of original gilding.

A rare and exceptional  
example of this form.

**OldeHope.com**  
215-297-0200  
info@oldehope.com

📍 115 East 72nd St, 1B  
New York, NY 10021  
📍 PO Box 718,  
New Hope, PA 18938



**ZIEBARTH'S ANTIQUES**, Mount Horeb, Wis. — Illinois illustrative painting by WPA artist, George Melville Smith, circa 1946.

**J&G ANTIQUES**, Amityville, N.Y. — Very fine and rare Federal inlaid candlestand, attributed to John Dunlap II (1784-1869) Antrim, N.H., circa 1810. Provenance: The Eddy Nicholson sale, January 27, 1995.



**THOMAS M. RAWSON ANTIQUES**, Cedar Rapids, Iowa — Folk art carving of dummy with original paint and clothing.



**JUDITH & JAMES MILNE ANTIQUES**, Kingston, N.Y. — New York City winter scene circa 1860. Has a great provenance.



SPECIAL  
SHOW  
SECTIONTHE 67<sup>TH</sup> ANNUAL  
New Hampshire Antiques Show

## GARDEN SEEDS

VILLAGE BRAIDER, Plymouth, Mass. — Early Twentieth Century Garden Seeds sign, double-sided painted wood, 46 by 12 inches.



WILLIAM K. & TERESA F. KURAU, Lampeter, Penn. — Historical Staffordshire General Lafayette Right Facing variant plate with blue edge. Only example we know of in private hands with this variant. We had offered a platter too some years ago but that was the only one too. We just recently noticed that the Winterthur Museum has some examples. We will have a large selection of General Lafayette items at the show. Just in time for his 200th year anniversary visit back to the United States.



JUDITH & JAMES MILNE ANTIQUES, Kingston, N.Y. — Unusual cast metal sculpture of an elk, circa 1900, 41 inches high by 31 inches wide by 9 inches deep.

August 8 – 10, 2024  
[nhada.org](http://nhada.org)

JEWETT-BERDAN ANTIQUES, New Castle, Maine — Basket with great form and original green paint, late Nineteenth Century.



GARTHOEFFNER GALLERY ANTIQUES, Lititz, Penn. — Wood carved green-painted heart box, circa 1880-1900.



## What are you hunting for this August?



Carved and painted wood weathervane or sign fragment of a hunting dog, late 19th c.  
Great weathered paint, doubled sided, 36" x 19" x 3"

## Withington & Company

2 Old County Road, Cape Neddick, Maine 03902 • Instagram: @withingtonantiques • Tel: 603.498.4778





## THE 67<sup>TH</sup> ANNUAL New Hampshire Antiques Show

SPECIAL  
SHOW  
SECTION



J&G ANTIQUES, Amityville, N.Y. — Queen Anne tea table with rectangular dish top, on cabriole legs with pad feet. This was found in an attic of a Connecticut home.



JEFF AND HOLLY NOORDSY, Cornwall, Vt. — Perfectly proportioned looped creamer, blown at a southern New Jersey glass house, circa 1840. Ex David Good and Barry D. Hogan.

**NHADA.ORG**

CHRISTOPHER & BERNADETTE EVANS ANTIQUES, Waynesboro, Va. — Early Twentieth Century American geometric hooked rug with crossing compass points. Professionally mounted for hanging. It measures 30 by 36 inches.



PETER SAWYER ANTIQUES, Exeter, N.H. — Assorted vintage watches and jewelry.



BOB JESSEN & JIM HOHNWALD, Fitzwilliam, N.H. — Shoe foot hutch table in old red paint.

## MELISSA ALDEN *Antiques*

PO Box 998, Portsmouth, New Hampshire 03802



Text: 603-501-9911 • Email: mscarterportsmouth@gmail.com



SPECIAL  
SHOW  
SECTION

# THE 67<sup>TH</sup> ANNUAL New Hampshire Antiques Show



JEF & TERRI STEINGREBE, New London, N.H. — Large wooden ship weathervane.



BAKER & CO. ANTIQUES, Lake George, N.Y. — We will be bringing a select large assortment of smalls.



SPENCER MARKS, LTD., Southampton, Mass. — This rare coffee service was presented to Edward Follensbee Noyes and Margaret Proctor upon their wedding day on February 15, 1863. Edward Noyes (October 3, 1832-September 4, 1890) grew up in New Hampshire and after graduating from Dartmouth College at the age of 23, he went to Cincinnati, Ohio, to attend law school. He served in the Union Army and helped form the 39th Ohio Infantry (Ohio Volunteer Infantry).



use your imagination

*period to mod*

Brennan and Mouilleseaux  
Antiques and Design

tbrennan296@gmail.com





# THE 67<sup>TH</sup> ANNUAL New Hampshire Antiques Show

SPECIAL  
SHOW  
SECTION

## OLD AS ADAM.

*Adam Irish ~ Antiques & Americana*



Booth  
№ 10



*Folk art carved and painted clock case in  
the form of a lion, c. early 20th century*

*(15 x 11 x 4 inches)*



*"Rose Glow Inn" polychrome painted  
wooden sign, c. 1920*

*(60 x 30 inches)*

### VISIT THE STORE

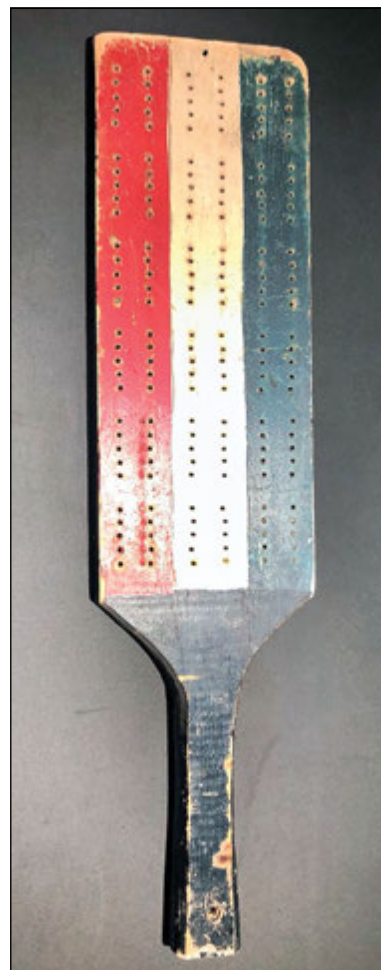
507 Main Street - Warren, RI

### SHOP ONLINE

[www.oldasadam.com](http://www.oldasadam.com) - @oldasadam

Tel. 603-661-9373 - [adam@oldasadam.com](mailto:adam@oldasadam.com)

IAN McKELVEY ANTIQUES,  
South Windham, Conn. — Over-  
sized general store pencil dis-  
play, circa 1930s.



CHRISTOPHER & BERNA-  
DETTE EVANS ANTIQUES,  
Waynesboro, Va. — Early Twenti-  
eth Century patriotic cribbage  
board in old red, white and blue  
paint, 21 inches long.



ZIEBARTH'S ANTIQUES, Mount Horeb, Wis. — Hepplewhite  
inlaid dresser box, New York, circa 1790.



OLDE HOPE ANTIQUES, INC., New York City — Clipper ship with  
banners, flag and shield watercolor with gold foil paper sails, mica  
flakes and cut paper and foil on a blue paper ground, American,  
circa 1860, 29 $\frac{3}{4}$  by 39 $\frac{1}{2}$  inches.



SPECIAL  
SHOW  
SECTION

THE 67<sup>TH</sup> ANNUAL  
New Hampshire Antiques Show



GARTHOEFFNER GALLERY ANTIQUES, Lititz, Penn. — Rare green-painted, fabric-lined 12-inch Nantucket basket.



PERIOD TO MOD/BRENNAN & MOUILLESEAUX ANTIQUES & DESIGN, Briarcliff Manor, N.Y. — Nineteenth Century wrought and sheet iron door handle. "O Vanity! What have ye done!"



VILLAGE BRAIDER, Plymouth, Mass. — Late Nineteenth Century still life on panel, 27 by 20 inches.



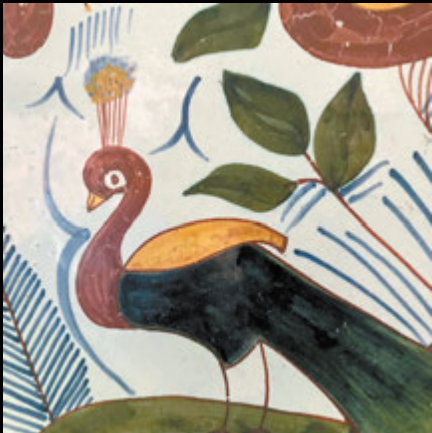
COTTAGE & CAMP, Millerton, N.Y. — Candy sign in alligatored paint.

August 8 – 10  
[nhada.org](http://nhada.org)

SPENCER MARKS, LTD.,  
Southampton, Mass. — This lovely Aesthetic Movement, sterling dish was made circa 1875 in Concord, N.H., by the William B. Durgin Company and retailed in Cincinnati, Ohio.



Booth 21 NANCY & GENE PRATT 585.330.7203







## THE 67<sup>TH</sup> ANNUAL New Hampshire Antiques Show

SPECIAL  
SHOW  
SECTION



**RESSER-THORNER AMERICANA**, Manchester, N.H. — “Life in London,” a Nineteenth Century snuffbox with the unusual portrayal of a mixed-race couple dancing in a pub, 3½-inch diameter, fine condition.



**RANDI ONA ANTIQUES**, Wayne, N.J. — She has ruffled ears! And an applied nose. And yarn sewn “blonde” hair. She’s wonderful.



**KELLY KINZLE ANTIQUES**, New Oxford, Penn. — Walnut huntboard with Gothic arched-paneled doors from Southside Virginia, circa 1800.



**JEFF & TERRI STEINGREBE**, New London, N.H. — Two signed A.E. Crowell miniature decorative decoys in original surface.



**ZIEBARTH'S ANTIQUES**, Mount Horeb, Wis. — Nineteenth Century Ohio Mill scene, oil on canvas painting.

## THOMAS R. LONGACRE ANTIQUES ● FOLKART

Exceptional early sheet iron horse weathervane professionally mounted on a painted iron base representing a pasture. It measures 28 inches in length and 19 inches high. Likely early to mid-19<sup>th</sup> century. Maker unknown.

47th  
YEAR



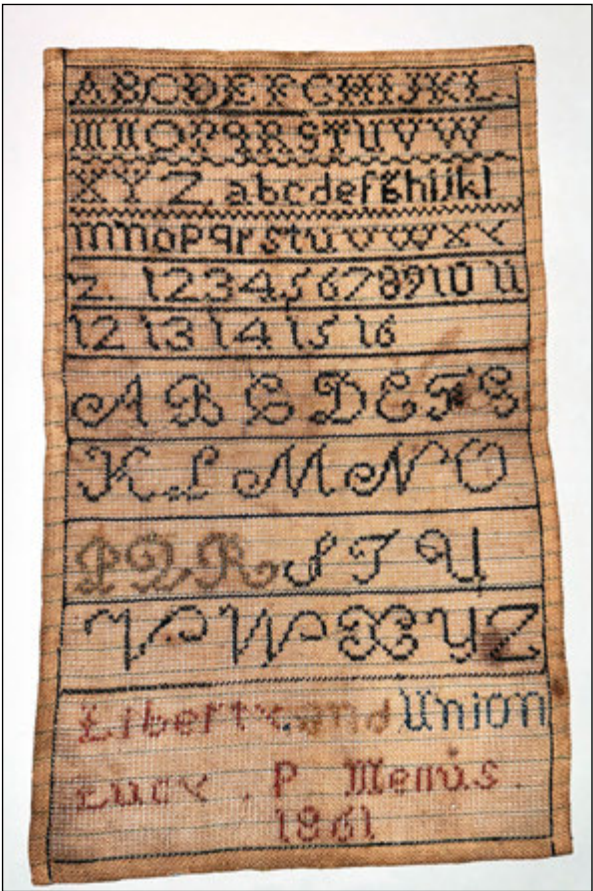
BOOTH  
#3

tom@thomasrlongacre.com ● www.thomasrlongacare.com



SPECIAL  
SHOW  
SECTION

THE 67<sup>TH</sup> ANNUAL  
New Hampshire Antiques Show



RESSER-THORNER AMERICANA, Manchester, N.H. — “Liberty and Union” sampler dated 1861 by Lucy P. Mellus of Massachusetts, 12 by 7½ inches (unframed). Research indicates that Lucy may have been from Braintree or Abington.

JEFFREY TILLOU ANTIQUES, Litchfield, Conn. — “Tree Of Love,” American School, unsigned, circa 1835, watercolor, gouache and ink on paper, 16½ by 15½ inches (with frame). Overall, in fine condition, uniform toning and oxidation, small repaired tear to lower right edge. The paperboard backing retains several labels, including The American Folk Art Gallery, New York City, dated June 8, 1971, and the Amon Carter Museum, Fort Worth, Texas. The American Folk Art Gallery label suggests that the work is from the Collection of Mrs Charles Sheeler, likely the second wife of the American Modernist painter Charles Sheeler (1883-1965).



PEWTER & WOOD ANTIQUES, Enfield, N.H. — A horse and foal weathervane, iron and sheet metal, blue wooden base, 31 inches high by 27 inches long.



COTTAGE & CAMP, Millerton, N.Y. — Small sheet iron goat weathervane in great surface.

*The 67th Annual*

New Hampshire Antiques Show  
August 8 – 10, 2024

William R. & Teresa F. Kurau



WWW.HISTORICALCHINA.COM

P.O. Box 457, Lampeter, PA 17537

(717) 464-0731 | (717) 314-2676 | email: Lampeter2@yahoo.com







# THE 67<sup>TH</sup> ANNUAL New Hampshire Antiques Show

SPECIAL  
SHOW  
SECTION



JEWETT-BERDAN ANTIQUES, New Castle, Maine — Carved wooden weathervane mold.



STEPHEN / DOUGLAS AT WALPOLE, Walpole, N.H. / Rockingham, Vt. — Tiny American Eighteenth Century “butterfly” table with rich old patina — a little gem.



August 8 – 10, 2024  
[nhada.org](http://nhada.org)

DAVID THOMPSON ANTIQUES & ART, South Dennis, Mass. — Beautiful, hand-tinted, daguerreotype, circa 1850, of a dog by itself, resting on an ornate carpet in photographer’s studio. It is ninth-plate size, in fine case with red velvet pad retaining its original seals. Excellent condition. Dimensions overall, including case: 2-7/8 by 2-3/8 inches.



J&G ANTIQUES, Amityville, N.Y. — Oil on canvas marine painting, “Running from the storm,” unsigned and in a beautiful gold gilded original frame.



HOLLIS BRODRICK, Portsmouth, N.H. — A wonderful rare 1760s Massachusetts woodcut print: “A Sachem of the Abenakee Nation, rescuing an English Officer from the Indians.”



Collection of Three Paint Decorated Treenware Covered Jars.  
Fine original condition. ca1860. Largest 3 3/4" h.

## Jeffrey Roelof

ANTIQUES

Booth #6

269-271-1799 | [folkart1@yahoo.com](mailto:folkart1@yahoo.com)



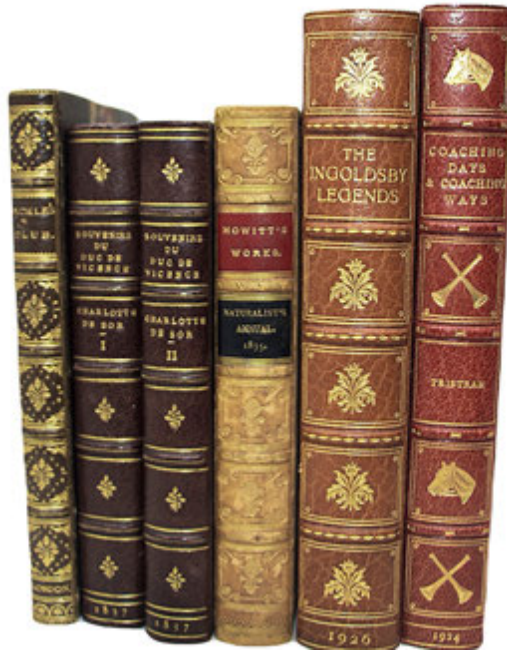


SPECIAL  
SHOW  
SECTIONTHE 67<sup>TH</sup> ANNUAL  
New Hampshire Antiques Show

**RESSER-THORNER AMERICANA**, Manchester, N.H. — Nineteenth Century pen wipe in the form of George Washington made from cloth, velvet, lace, brass, hair and parchment, 13 by 9 inches, in overall fine condition with some flaws to the parchment face and possibly hand. A similar example adorns the cover of *Antiques MAGAZINE* in February 1926, wherein the editors seem to suggest a Pennsylvania origin of the early 1800s. Others actually state that these were epaulets used by pallbearers at Washington's funeral. We, like Mount Vernon (which has an example in its collection), believe these to be pen wipes dating to the second half of the Nineteenth Century.



**PETER SAWYER ANTIQUES**, Exeter, N.H. — Mount Lafayette and Eagle Cliff from the shore of Echo Lake by Edward Hill.



**DeWOLFE AND WOOD**, Alfred, Maine — Fine bindings

**JEWETT-BERDAN ANTIQUES**, New Castle, Maine — We will have a case of Nineteenth and early Twentieth Century holiday.



**THOMAS M. RAWSON ANTIQUES**, Cedar Rapids, Iowa — Circa 1820 redware jar with beautiful glaze, from Bristol County, Massachusetts.



**PA Architectural Barn Ornament**  
with hearts & stars. C 1880  
86" diameter



**Hamiltonian Horse**  
**Weathervane** retaining its  
old surface. 23" H



**Automobile Weathervane** retaining  
its original surface. 25" L x 16" H



**The BOXERS** C 1900 Corbett vs  
Mitchell 32" H x 27" W (framed)

**JUDITH & JAMES  
MILNE**

*At Home Antiques*

KINGSTON, NY

917 402 1778 or 917 754 5454

Instagram@milneantiquesanddesign  
jmilneantiques@gmail.com

**BOOTH 14**





# THE 67<sup>TH</sup> ANNUAL New Hampshire Antiques Show

SPECIAL  
SHOW  
SECTION



**WILLIAM K. & TERESA F. KURAU,** Lampeter, Penn. — Historical poly-chrome transfer pitcher with a view of the Landing of Lafayette At Castle Gardens, made by Jersey City Pottery Company, New Jersey, circa 1840s. These pitchers are extremely rare and hardly ever come on the market. A true piece of New York City history.



**ROBERT T. FOLEY ANTIQUES,** Gray, Maine — Mid-Nineteenth Century Taylor Block sign.



**NATHAN LIVERANT AND SON,** Colchester, Conn. — Assembled pair of Queen Anne cherry side chairs with period flame stitch upholstery, Norwich, Conn., 1750-75.



**BAKER & CO. ANTIQUES,** Lake George, N.Y. — A rare Lizzie Lapp, Lancaster County Pennsylvania-made Amish cloth doll.



**PEWTER & WOOD ANTIQUES,** Enfield, N.H. — A Canada goose standing on iron legs, initials "W.R.M." on bottom, probably owner, 28 inches high by 9 inches wide by 32 inches long.

## PAM & MARTHA BOYNTON ANTIQUES



STONE BOOK, WHITE MARBLE STONE BOOK, MAHOGANY INLAY, 5" X 3.5", EXCELLENT CONDITION



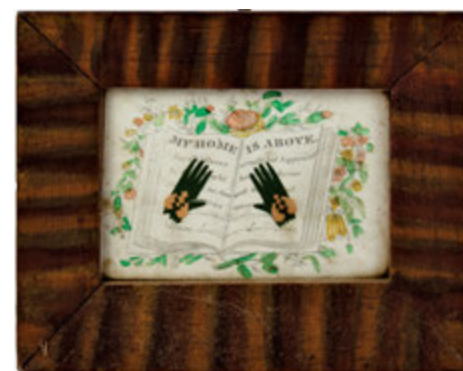
WATERCOLOR ON PAPER, TIPPY TAIL TUXEDO "MOSES" WITH HIS RAT FRAME: 5.5" X 8", ORIGINAL UNTOUCHED CONDITION



HOOKED RUG, MOM & BABY HORSE EATING APPLES, 32" X 26", UNMOUNTED, C1940, MINT CONDITION



PAIR OF FIRE BUCKETS  
RUFUS GREENE AMORY 1760-1833 (STAMPED FENNO)  
RUFUS AMORY, A BOSTON LAWYER HARVARD COLLEGE  
CLASS OF 1778



FRAMED DOUBLE HEART & HAND MEMORIAL, "MY HOME IS ABOVE", 5.5" X 4" FRAMED

PAM & MARTHA BOYNTON | GREELY RD. TOWNSEND, MA 01469 • 978-835-5920





**SPECIAL  
SHOW  
SECTION**

## THE 67<sup>TH</sup> ANNUAL New Hampshire Antiques Show



**RANDI ONA ANTIQUES**, Wayne, N.J. — A very miniature six-board box with very tiny rosehead nails in fabulous green paint.

**OLIVER GARLAND**, Falmouth, Mass. — Collection of treen: burl dog snuff box, burl spice container, rare, pressed horn pipe needle, pressed horn lion snuff box, Eighteenth to early Nineteenth Century.



**STEPHEN / DOUGLAS AT WALPOLOE**, Walpole, N.H. / Rockingham, Vt. — Large watercolor reward of merit with cat. "To Martha A. Hoover for learning her ABC" is inscribed on bottom. Size: 15 by 12¾ inches.

**GARTHOEFFNER GALLERY ANTIQUES**, Lititz, Penn. — An oil on canvas by Sterling Strauser, 1889, 20 by 24 inches.

**BAKER & CO. ANTIQUES**, Lake George, N.Y. — An early blue-painted sign with cloth toy dogs.



# Thomas M. Rawson

**CEDAR RAPIDS, IA**  
**319-389-2041**

*American Folk Art, Redware and Stoneware Pottery,  
Naive and Sophisticated Paintings*

Wonderful folk art horse carving found in Wisconsin



Horse push riding toy. Phenomenal original condition



17th or 18th century Santos cage doll. All original but missing crown. 33" tall



Carved folk art box with dog finial





# THE 67<sup>TH</sup> ANNUAL New Hampshire Antiques Show

SPECIAL  
SHOW  
SECTION



**KELLY KINZLE ANTIQUES**, New Oxford, Penn. — Rare set of six ladderback chairs, circa 1740, from the Delaware Valley.

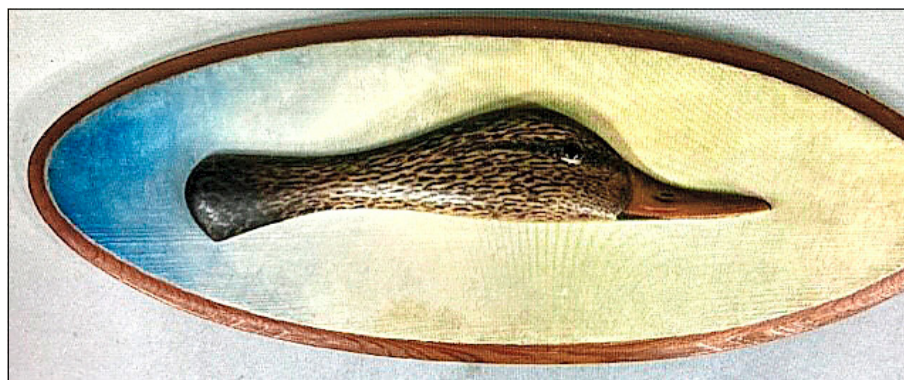
**NATHAN LIVERANT AND SON**, Colchester, Conn. — Rare signed miniature portrait of a gentleman by Isaac Sheffield (1807-1845) of New London, Conn., 1825-45.



**OLDE HOPE ANTIQUES, INC.**, New York City — A hanging wall box, carved pine with original painted finish, probably lower Canada, Eighteenth Century, 18½ inches high, 15½ inches wide, 10½ inches deep. It is inscribed within the heart, "1768 Meary Hana Farhingrin."



**IAN McKELVEY ANTIQUES**, South Windham, Conn. — Nineteenth Century tiger maple Federal, one over three, child-sized chest.



**ROBERT BURGER**, Mount Vernon, Ohio — Elmer Crowell carved plaque.



## Bob Jessen & Jim Hohnwald

Fitzwilliam, NH



603-585-9188



Booth 27



*Two Drawer Lift Top Blanket  
Chest, Vermont origin with  
original paint decoration.*



SPECIAL  
SHOW  
SECTIONTHE 67<sup>TH</sup> ANNUAL  
New Hampshire Antiques Show

SCOTT BASSOFF / SANDY JACOBS, Swampscott, Mass. — Unusual cherry wall cupboard with broken arch pediment and bowfront drawer, which measures 28 inches tall by 11½ inches deep and 13 inches wide.



ZIEBARTH'S ANTIQUES, Mount Horeb, Wis. — Large American sterling silver ewer, Tiffany & Co., circa 1900-10.



GARTHOEFFNER GALLERY ANTIQUES, Lititz, Penn. — Early painted face cloth doll in original condition, 18 inches tall, circa 1870.



COTTAGE & CAMP, Millerton, N.Y. — Handmade doll group.



## JEFFREY TILLOU ANTIQUES

MARCHING BAND CYMBAL  
PLAYER WHIRLIGIG

American, in the manner of or possibly attributed to Rocco Pavese (Italian/American 1852-1950).  
Western Michigan, late 19th c./early 20th c.  
Carved and painted wood.

Over-all in great condition, retaining original paint, minor losses and wear consistent with age and exposure missing paddles.

Provenance: Private collector, Western Michigan,  
From the Collection of Donald Moylan,  
Hindman Auctions, Cincinnati, Ohio  
33 ½" h (on base)

Jeffrey Tillou Antiques | 39 West Street, On the Green  
Litchfield, CT | 860-567-9693 | [www.tillouantiques.com](http://www.tillouantiques.com)





# THE 67<sup>TH</sup> ANNUAL New Hampshire Antiques Show

SPECIAL  
SHOW  
SECTION



ROBERT BURGER, Mount Vernon, Ohio — A 28-inch plaque for Red Mans Lodge

DoubleTree by Hilton  
Manchester, NH • 603.625.1000  
[nhada.org](http://nhada.org)

BITTNER ANTIQUES, Shelburne, Vt. — Pembroke mahogany table from Newport, R.I., made by Robert Lawton Jr (1772-1853) and dated 1794. It is documented in Yale University's Rhode Island Furniture Archive.



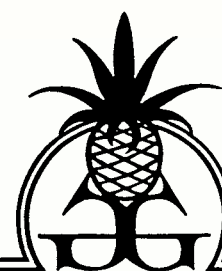
J&G ANTIQUES, Amityville, N.Y. — Double-sided carved trade sign "Quick Service Gentleman's Hair Dresser." This sign was outside of a barber shop.



RESSER-THORNER AMERICANA, Manchester, N.H. — "The Goddess of Liberty," pen, ink and watercolor, in period frame, 10 by 8 inches (frame included), with a notation on the verso, "Album of Lucy Bush, Ridgebury, Conn. 1829."

*The 67th Annual*  
New Hampshire Antiques Show

**August 8 – 10, 2024**  
THURSDAY & FRIDAY: 10AM – 7PM  
SATURDAY: 10AM – 4PM



**GARTHOEFFNER GALLERY**

*Antiques*

Pat and Rich Garthoeffner  
ANTIQUES & FINE ART

Lititz, PA 17543  
717-581-0935 717-471-4694



SPECIAL  
SHOW  
SECTION

THE 67<sup>TH</sup> ANNUAL  
New Hampshire Antiques Show



DeWOLFE AND WOOD, Alfred, Maine — Collection of Nineteenth Century Valentines



BOB JESSEN & JIM HOHNWALD, Fitzwilliam, N.H. — Child's size cupboard in paint decoration.



OLDE HOPE ANTIQUES, INC., New York City — Miniature chair, carved wood with original yellow paint and floral stencil on crest and seat edge, mid-Nineteenth Century, Pennsylvania.

BITTNER ANTIQUES, Shelburne, Vt. — Edward R. Murrow's personal 14K Bulova chronograph wristwatch with a 14K bracelet, documented with provenance from the Murrow family.



BAKER & Co. ANTIQUES



BAKERCoANTIQUES.COM

Tom R. Baker  
Delmar, NY

Booth 60

831.818.8809  
tom@bakercoantiques.com





THE 67<sup>TH</sup> ANNUAL  
New Hampshire Antiques Show

SPECIAL  
SHOW  
SECTION



THOMAS M. RAWSON  
ANTIQUES, Cedar Rapids,  
Iowa — Northwest Coast  
house totem. Beautiful  
carving and original paint-  
ed surface.



RANDI ONA ANTIQUES, Wayne, N.J. —  
An anniversary tin basket; large, lus-  
cious strawberries in excellent color  
and condition.



CHRISTOPHER & BERNADETTE  
EVANS ANTIQUES, Waynesboro, Va. —  
Nineteenth Century American minia-  
ture redware jar with manganese and  
cream slip decoration, 2 1/4 inches tall.

**MATTHEW EHRESMAN**

**ANTIQUES**

3090 Blake Road  
Wadsworth, Ohio 44281  
Cell 330-265-7669



DAVID THOMPSON ANTIQUES & ART, South Dennis, Mass. —  
Bisque head doll, completely dressed by the Shakers, circa 1890,  
including “Dorothy” cloak in soft gray/beige wool with hood and  
capelet, matching dress with “Bertha” pointed front and back and  
trimmed in lace, poplar bonnet under cape hood, three layers of  
undergarments and black stockings. Very good condition with nor-  
mal wear. She is 14 inches high. Recently discovered in Massachu-  
setts estate.



SPECIAL  
SHOW  
SECTION

THE 67<sup>TH</sup> ANNUAL  
New Hampshire Antiques Show



SPENCER MARKS, LTD.,  
Southampton, Mass. — This  
stunning, Art Nouveau ster-  
ling silver inkwell was made  
in 1900 by Gorham from Prov-  
idence, R.I.



ZIEBARTH'S ANTIQUES, Mount  
Horeb, Wis. — Rare and important  
incised presentation pitcher attribut-  
ed to Richard Remmey, circa 1870.

**August 8 – 10, 2024**  
THURSDAY & FRIDAY:  
10AM – 7PM  
SATURDAY: 10AM – 4PM



JEWETT-BERDAN ANTIQUES, New  
Castle, Maine — One of a set of three  
early silhouettes.

WILLIAM K. & TERESA F. KURAU, Lam-  
peter, Penn. — Staffordshire Canary  
children's mug with rust red transfer of  
an eagle and Washington in a cartouche.  
Children's mugs like these are very  
sought-after by political collectors and  
historical china collectors. These some-  
times show up in a white pearlware but  
never really in canary. We will have a  
large selection of Washington-related  
items at the show.



**Randi Ona Antiques**

[www.onaantiques.com](http://www.onaantiques.com)

randionaantiques@gmail.com • 973-495-3707



*Looking forward to seeing you at the  
New Hampshire Antique Dealers Show!*

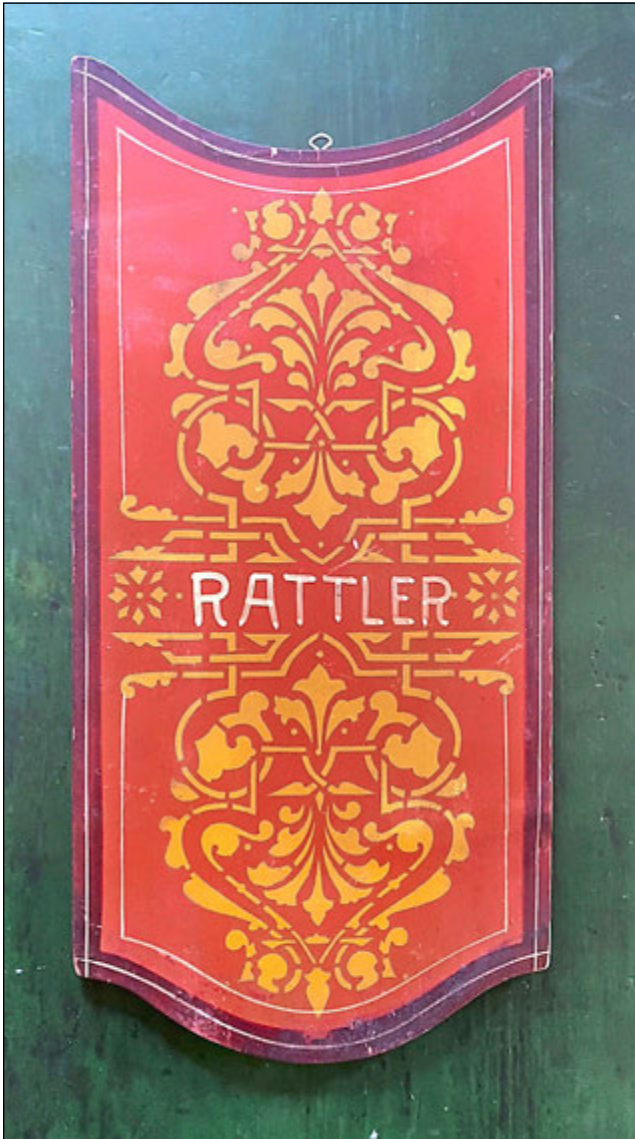






## THE 67<sup>TH</sup> ANNUAL New Hampshire Antiques Show

SPECIAL  
SHOW  
SECTION



ROBERT T. FOLEY ANTIQUES, Gray, Maine — “Rattler,” elaborately decorated salesman’s sample board, 9 by 18 inches, attributed to Paris Mfg.

J&G ANTIQUES, Amityville, N.Y. — Seymour three-drawer sewing stand, circa 1810-20. A cookie-corner stand with book matched crotch mahogany drawer fronts, original brasses, bottom drawer with fabric bag, on well-carved reeded legs, terminating in original brass casters.

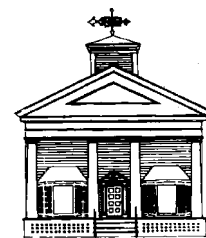


ROBERT BURGER, Mount Vernon, Ohio — Richard le Barre Goodwin, “The Bosa Chica Gun Club,” 33 by 47 inches.

OLDE HOPE ANTIQUES, INC., New York City — Peacock, carved and painted pine with wire crest on a square base, 6½ inches high, maker unknown, probably Pennsylvania, circa 1900.



Delft portrait charger depicting William and Mary, King and Queen of Great Britain and the Netherlands, c. 1690, dressed as Frank Zappa and Janis Joplin. Blue on white, in good condition, 13.5” in diameter.”



NATHAN  
LIVERANT  
AND SON, LLC  
ANTIQUES

168 SOUTH MAIN STREET  
P.O. BOX 103, COLCHESTER, CT 06415  
(860) 537-2409

Visit us at: [liverantantiques.com](http://liverantantiques.com)

Follow us at: [instagram.com/liverant.antiques/](https://www.instagram.com/liverant.antiques/)  
[mail@liverantantiques.com](mailto:mail@liverantantiques.com)





SPECIAL  
SHOW  
SECTION

THE 67<sup>TH</sup> ANNUAL  
New Hampshire Antiques Show



**CHRISTOPHER & BERNADETTE EVANS ANTIQUES**, Waynesboro, Va. — Pair of large molded redware spaniels strongly attributed to John Bell, Waynesboro, Penn., circa 1870. One unglazed, the other in a Rockingham lead glaze. Both surviving in excellent condition. They are 9¼ inches tall.



**STEVEN STILL ANTIQUES**, Manheim, Penn. — Paint-decorated hanging set of drawers attributed to John Allen, Meigs County Ohio, circa 1890.

**CHRISTOPHER & BERNADETTE EVANS ANTIQUES**, Waynesboro, Va. — Mid-Nineteenth Century folk art portrait of a gentleman with sideburns, full cheeks and a pompadour. American, water-color and pencil on paper, 6-inch diameter framed.

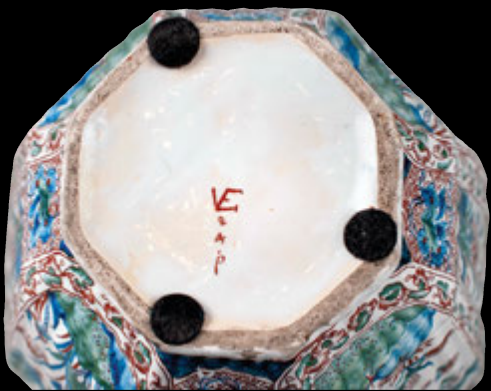


**KELLY KINZLE ANTIQUES**, New Oxford, Penn. — Vibrant paint-decorated corner cupboard in the Mennonite tradition from Schuylkill County, circa 1840.

# John Hunt Marshall ANTIQUES



3 large covered Delft jars Dutch c.1710 Marked LVE 24  
with a dotted P for Lambertus van Eenhoorn, the owner of De Metaale  
Pot factory from 1691-1721 Overall height 22" No restoration



John Hunt Marshall | 254 Reservoir Rd. | Westhampton, MA 01027 | 413-519-1715





## THE 67<sup>TH</sup> ANNUAL New Hampshire Antiques Show

SPECIAL  
SHOW  
SECTION



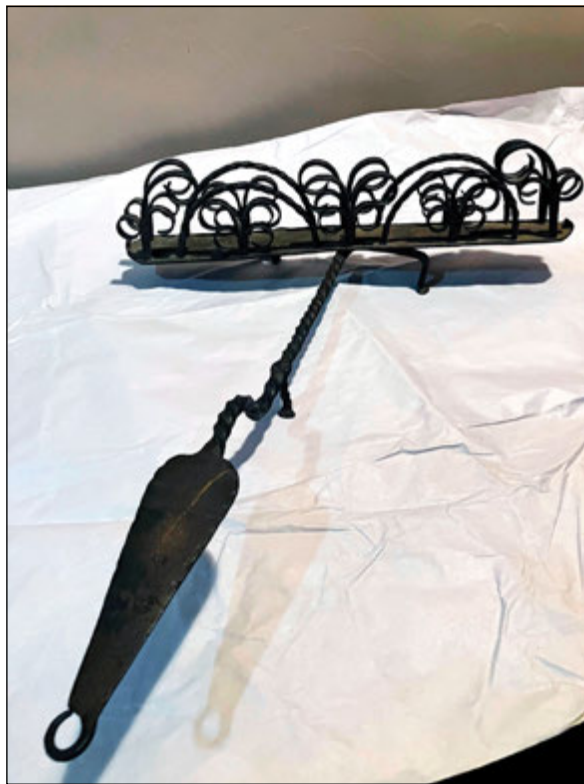
**NATHAN LIVERANT AND SON**, Colchester, Conn. — Chippendale mahogany serpentine front chest of drawers. Descended in the family of General Benjamin Lincoln (1733-1810) of Hingham, Mass., 1765-90.



**HOLLIS BRODRICK**, Portsmouth, N.H. — An excellent Eighteenth Century New England toaster.

[nhada.org](http://nhada.org)

**KELLY KINZLE ANTIQUES**, New Oxford, Penn. — Portrait of President John Adams attributed to Edward Savage, circa 1800.



**August 8 – 10, 2024**

DoubleTree by Hilton

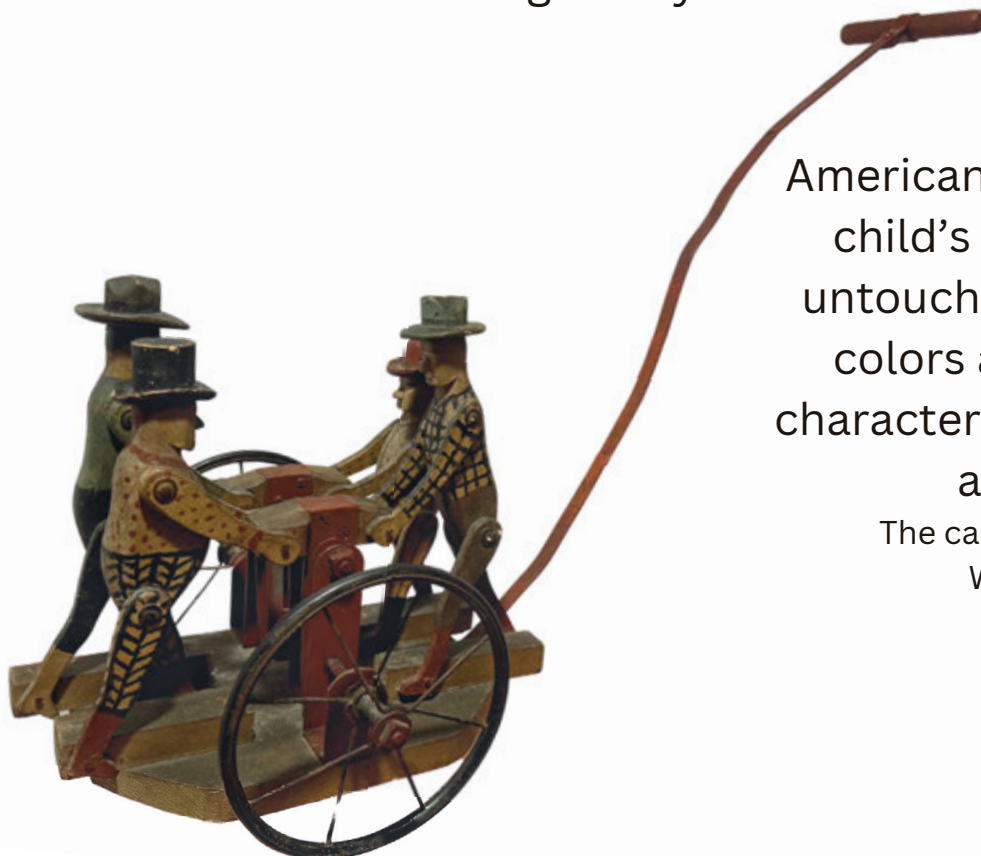
Manchester, NH • 603.625.1000



**PEWTER & WOOD ANTIQUES**, Enfield, N.H. — A double-sided gameboard, 17 inches wide by 30 inches long.

## Early American Antiques

Steven Sherhag - Early American Antiques - Booth 52



American folk art late 19th-century child's push toy. It is in original untouched condition with vibrant colors and patina. Each carved character has its own unique carved and painted attire.

The cart measures 12 H X 9 W X 11 D

With handle 20 H X 24 W

[sherhag@gmail.com](mailto:sherhag@gmail.com)

330.207.2196



**SPECIAL  
SHOW  
SECTION**

# THE 67<sup>TH</sup> ANNUAL New Hampshire Antiques Show



**ROBERT T. FOLEY ANTIQUES**, Gray, Maine — Oakfield Clock Exchange sign with 22-inch diameter iron clock face.

**STEVEN STILL ANTIQUES**, Manheim, Penn. — Pennsylvania hanging salt box, from the first half of the Nineteenth Century, with an early blue green painted surface.



**RANDI ONA ANTIQUES**, Wayne, N.J. — A very good Puffy Sleeve/Ezra Wood profile of a woman. In the original pressed brass frame.



**ROBERT BURGER**, Mount Vernon, Ohio — Hop-pinger, Philadelphia

**JEFF AND HOLLY NOORDSY**, Cornwall, Vt. — Nine-teenth Century Pennsylvania chalkware rabbit.

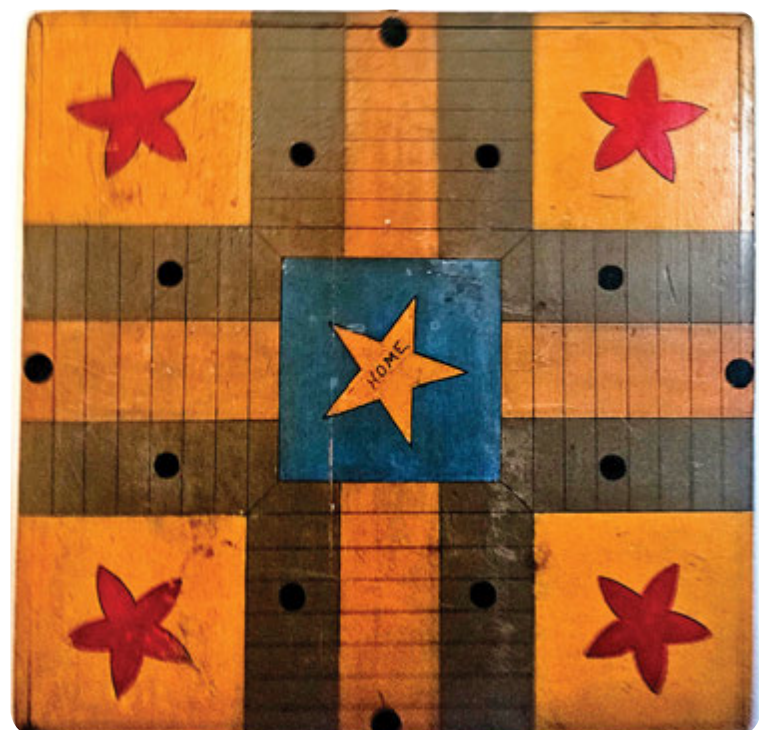


## Gameboard:

Colorful  
19th century  
Gameboard  
Found in  
Pennsylvania.  
20" x 19 1/2"

## Redware Jug:

Early New  
Hampshire  
Redware Jug.  
7 1/2" tall.



# NEWSOM & BERDAN ANTIQUES & FOLK ART

860-558-3282 • [newsomberdan@aol.com](mailto:newsomberdan@aol.com)  
Thomasville, Pennsylvania *by Appointment*  
Michael Newsom • [www.newsomberdan.com](http://www.newsomberdan.com)





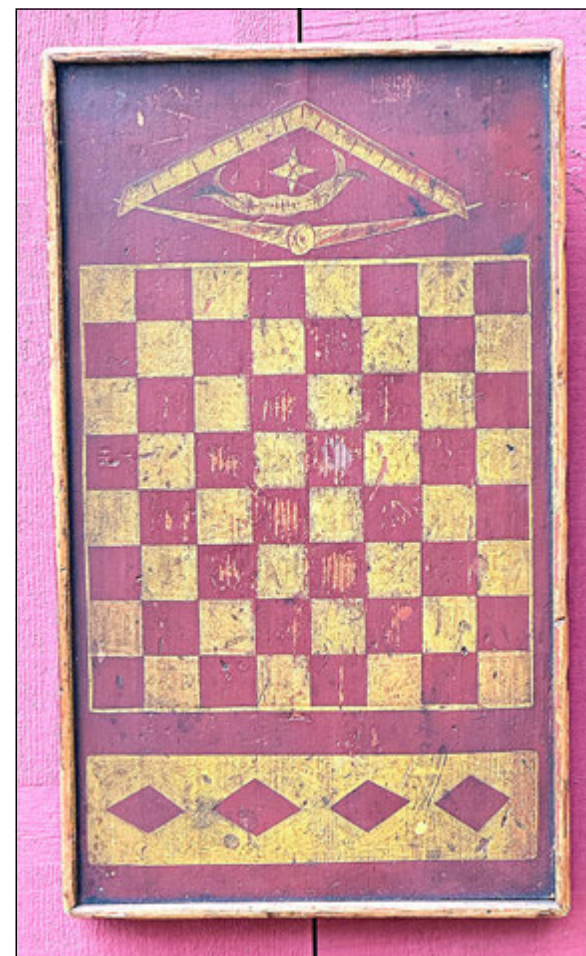


# THE 67<sup>TH</sup> ANNUAL New Hampshire Antiques Show

SPECIAL  
SHOW  
SECTION



DeWOLFE AND WOOD,  
Alfred, Maine — Shaker  
boxes



JEFF AND HOLLY NOORDSY, Cornwall, Vt. —  
Nineteenth Century paint-decorated Masonic  
gameboard found in Maine.



HOLLIS BRODRICK, Portsmouth, N.H. — A rare  
1734 mezzotint of "Jonathan Belcher, Governor  
of Massachusetts Bay and New Hampshire."



THOMAS M. RAWSON ANTIQUES, Cedar Rap-  
ids, Iowa — Pair of carved and painted lumber-  
jacks were part of a whirligig.

August 8 – 10, 2024



Legendary Spawning Trout- Oscar Peterson  
(1887-1951) as pictured p. 76 "Michigans Master  
Carver" by Ronald Fritz 20"x36"

Robert Burger



Sporting Paintings  
Collectibles & Folk Art



Trout on Barn Door- Richard Le Barre  
Goodwin (ex. Fannon Collection) 32x42"



Last quarter 19 th C. Adirondack table-  
(ex. Bert Savage, Crumpton Collection)



Gordon and English Setter- 1883. Heinrich Speirling.  
Exhibited 1884 Cinninatti Industrial Exposition "41x52"



Frank Stick- (ex. David Stick Collection) 35"x45"

PO Box 765, Mt Vernon, Ohio 43050 | Cell 614-560-7431 | burgerent@gmail.com



SPECIAL  
SHOW  
SECTION

# THE 67<sup>TH</sup> ANNUAL New Hampshire Antiques Show



**BOB JESSEN & JIM HOHNWALD**, Fitzwilliam, N.H. — Early painted armchair, painted red candlestand with carved feet and a large punched tin hanging lantern with five candle sockets.

**ZIEBARTH'S ANTIQUES**, Mount Horeb, Wis. — Northwest Coast model totem, circa 1890.



**STEVEN STILL ANTIQUES**, Manheim, Penn. — Copper eagle parade torch from Abraham Lincoln's 1860 or 1864 presidential campaign.



**STEPHEN / DOUGLAS AT WALPOLOE**, Walpole, N.H. / Rockingham, Vt. — Mid-Nineteenth Century checkerboard with finely executed and detailed design, American.



**SCOTT BASSOFF / SANDY JACOBS**, Swampscott, Mass. — A pair of 18K yellow gold hedgehog earrings.



## Spencer Marks, Ltd.

Fine Antique & 20<sup>th</sup> Century Silver

[www.spencermarks.com](http://www.spencermarks.com)



Tiffany & Co. Antique  
Sterling Silver Yachting Trophy,  
New York City, NY, c. 1887,  
Length: 20.5", Weight: 158 tr. oz.

Newport Citizens Cup  
WON BY  
SCHOONER YACHT

**MAGIC**

N.Y.C.

Aug. 16<sup>th</sup> 1887.

THORNTON N. MOTLEY, Owner.



Spencer Gordon, III ★ Mark F. McHugh

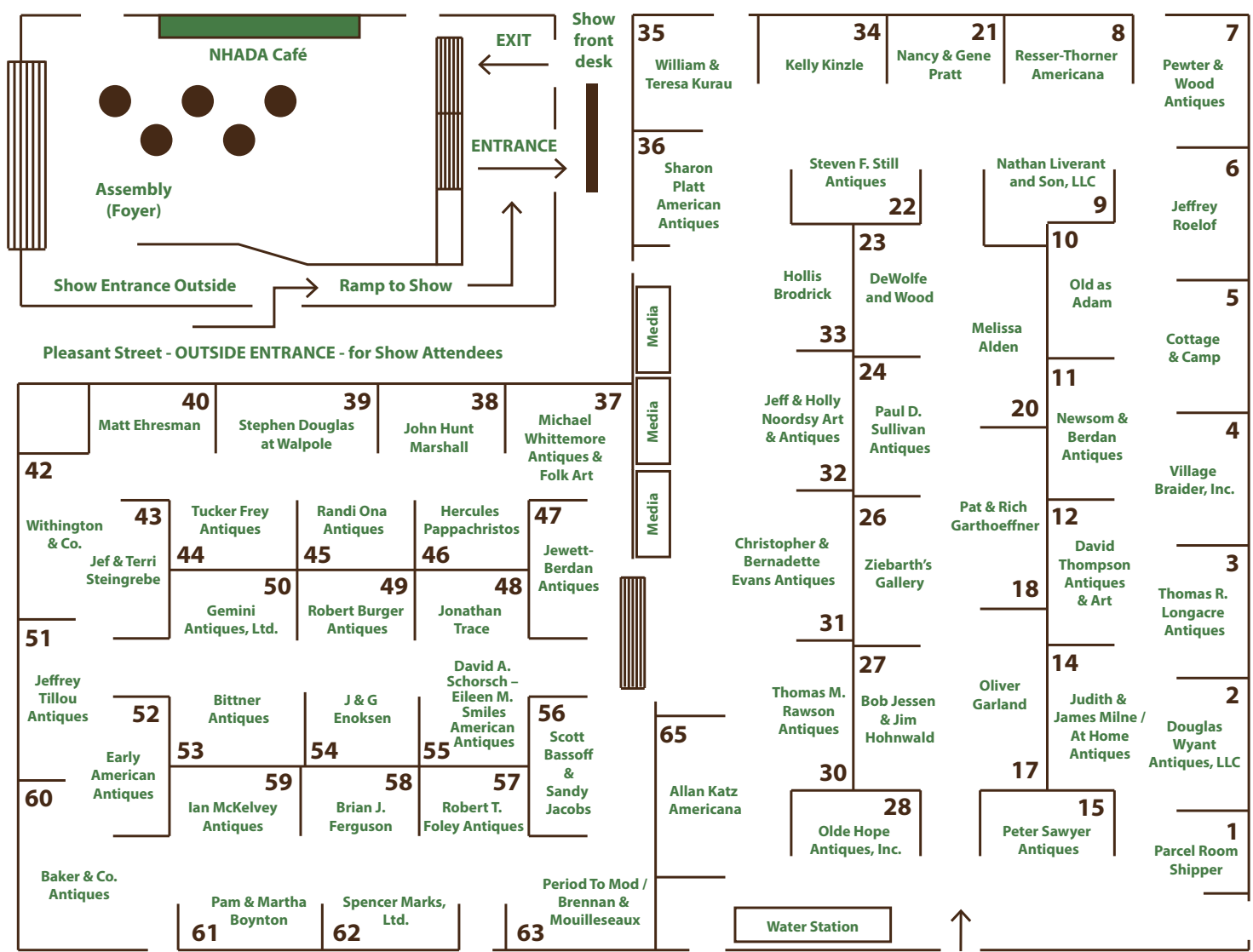
P.O. Box 330, Southampton, Massachusetts 01073 (413) 527-7344

Member: The Art and Antiques Dealers League of America, CINOA & The Antique Dealers' Association of America





2024 NHADA EXHIBITOR LIST



Sponsored by the NHADA 2024

SHOW ENTRANCE

Melissa Alden, Portsmouth, NH	Booth 20	Jeff & Holly Noordsy Art and Antiques, Cornwall, VT	Booth 32
Baker & Co. Antiques, Delmar, NY	Booth 60	Old as Adam, Providence, RI	Booth 10
Bittner Antiques, Shelburne, VT	Booth 53	Olde Hope Antiques, Inc., New York, NY	Booth 28
Pam & Martha Boynton, Townsend, MA	Booth 61	Randi Ona Antiques, Wayne, NJ	Booth 45
Hollis Brodrick, Portsmouth, NH	Booth 33	Hercules Pappachristos, Derry, NH	Booth 46
Robert Burger Antiques, Mount Vernon, OH	Booth 49	Period To Mod/Brennan & Mouilleseaux Antiques & Design, Briarcliff Manor, NY	Booth 63
Cottage & Camp, Millerton, NY	Booth 5	Pewter & Wood Antiques, Enfield, NH	Booth 7
DeWolfe and Wood, Alfred, ME	Booth 23	Sharon Platt American Antiques, New Castle, NH	Booth 36
Early American Antiques, Canfield, OH	Booth 52	Nancy & Gene Pratt, Victor, NY	Booth 21
Matt Ehresman, Wadsworth, OH	Booth 40	Thomas M. Rawson Antiques, Cedar Rapids, IA	Booth 30
J & G Enoksen, Amityville, NY	Booth 54	Resser-Thorner Americana, Manchester, NH	Booth 8
Christopher & Bernadette Evans Antiques, Waynesboro, VA	Booth 31	Jeffrey Roelof, Kalamazoo, MI	Booth 6
Brian J. Ferguson, Swansea, MA	Booth 58	Peter Sawyer Antiques, Exeter, NH	Booth 15
Robert T. Foley Antiques, Gray, ME	Booth 57	David A. Schorsch - Eileen M. Smiles American Antiques, Woodbury, CT	Booth 55
Tucker Frey Antiques, Woodbury, CT	Booth 44	Spencer Marks, Ltd., Southampton, MA	Booth 62
Oliver Garland, Falmouth, MA	Booth 17	Jef & Terri Steingrebe, New London, NH	Booth 43
Pat & Rich Garthoeffner, Lititz, PA	Booth 18	Stephen Douglas at Walpole, Walpole, NH	Booth 39
Gemini Antiques, Ltd., Whitehouse Station, NJ	Booth 50	Steven F. Still Antiques, Manheim, PA	Booth 22
Scott Bassoﬀ and Sandy Jacobs, Swampscott, MA	Booth 56	Paul D. Sullivan Antiques, Manchester, NH	Booth 24
Bob Jessen & Jim Hohnwald, Fitzwilliam, NH	Booth 27	David Thompson Antiques & Art, So. Dennis, MA	Booth 12
Jewett-Berdan Antiques, Newcastle, ME	Booth 47	Jeffrey Tillou Antiques, Litchfield, CT	Booth 51
Allan Katz Americana, Madison, CT	Booth 65	Jonathan Trace, Portsmouth, NH	Booth 48
Kelly Kinzle, New Oxford, PA	Booth 34	Village Braider, Inc., Plymouth, MA	Booth 4
William & Teresa Kurau, Lampeter, PA	Booth 35	Michael Whittemore Antiques & Folk Art, Punta Gorda, FL	Booth 37
Nathan Liverant and Son, LLC, Colchester, CT	Booth 9	Withington & Co., Cape Neddick, ME	Booth 42
Thomas R. Longacre Antiques, Marlborough, NH	Booth 3	Douglas Wyant Antiques, LLC, Cassopolis, MI	Booth 2
John Hunt Marshall, Westhampton, MA	Booth 38	Ziebarth's Gallery, Mount Horeb, WI	Booth 26
Ian McKelvey Antiques, So Windham, CT	Booth 59		
Judith & James Milne/At Home Antiques, Kingston, NY	Booth 14		
Newsom & Berdan Antiques, Thomasville, PA	Booth 11		



@nhantiquesdealers  
#nhdealersshow

nhada.org

