

# Winter Associates

Auctioneers & Appraisers

**LIVE AUCTION**  
**January 8th at 5:30PM**

**\*\* Heavy Snow Date: January 9th, call to confirm**



**Paintings, prints & Sculpture; Asian shibayama, ivory, stone and wood carvings, ceramics, etc.; English and Continental Furniture & Accessories including Venetian enamel miniatures; Silver; Jewelry; Fine Ceramics & Glass; Clocks; Oriental Rugs; etc.**

View catalog online as of December 29th at [www.AuctionsAppraisers.com](http://www.AuctionsAppraisers.com)

**Previews:**

Friday, Jan. 5th, 12-4 pm

Sunday, Jan. 7th, 2-4 pm

Monday, Jan. 8th, 12-5pm

or by appointment.

From Estates and private collections in Massachusetts, New York, Connecticut, New Jersey and Rhode Island. CONTINENTAL & ENGLISH FURNITURE AND ACCESSORIES: 17th C. English coffer; Jacobean court cupboard exhibited at the 1904 Louisiana Purchase Exposition; 18th C. chest of drawers; French style parquetry desk, chest, bookcase, and stands (3); Louis XVI and XI settee, center table, armchairs (10); Renaissance/ Baroque Revival pieces including hall tree, armchairs including one with needlepoint upholstery, standing shelf, throne chair, wall mirror, upholstered bench, center table; antique carved wood standing torchbearers, 4' h.; carved marble "Moses" sculpture; French bust of Brongniart; two bronze busts by R. George; Venetian mirrors, chandelier and gold-flecked stemware; 20+ Viennese enamels; guilloche enamel vanity set; micro-mosaic; tantalus with MOP inlay; 15+ antique snuff & other small boxes with silver overlay, tortoiseshell, horn, etc.; Pietra Dura (13); 15+ miniatures; Napoleonic cachepots; Limoges partial dinner service; Herend "Printemps" tea service; German and Royal Delft porcelain plaques, etc. PAINTINGS: including: George Grosz watercolor, Gabriel Godard oil; Andre Gisson oil; Samuel Foster oil; Yvonne Pene du Bois oil; Marion Steele oil; Peter Tysver, oil; 19th C. portraits (6), etc. PRINTS: Rembrandt 19th C. etching; Albrecht Durer woodcut c. 1508; Paul Cesar Helleu; George Buffon; Louis Orr; James Gillray; Phillip Kappel; etc. ASIAN: Chinese embroidered floor screen, 48" h. and painted silver foil floor screen, 8" h.; Shibayama tusk and four fruit; Chinese lacquer tea caddy; 40+ stone carvings; 60+ Canton Export and other porcelain, textiles including robes, ivory and wood netsuke, okimono, and card cases; snuff bottles; scrolls, etc. SILVER: Codan Jensen-style sterling teaset and tray; Georg Jensen "Acorn" flatware; Continental silver 5pc tea set; Whiting enameled seafood forks, etc. JEWELRY: Edwardian jade, diamond and platinum ring; vintage platinum, onyx and diamond ring; 14K spiral chain necklace and bracelet; 30+ gold rings, some set with precious stones; diamond bar pin, etc. GLASS: Waterford 84 pcs of "Kylemore", "Marquis", and "Maevé"; Baccarat type hurricanes; Baccarat and Moser tableware; Hawkes stemware, etc. CLOCKS: Tiffany style slag glass mantel; Viennese miniature panel; slate mantel, Ansonia regulator, etc. ORIENTAL RUGS: Modern and semi-antique (10) MISCELLANEOUS: Americana including six Windsor chairs; 18th C. blanket chest; ephemera and reference books; sled; 50+ inkwells including guilloche enameled, silver-overlay, silverplate, figural, etc.



19th C. Viennese enamel, 20+ pcs



Codan, Jensen style, sterling



Waterford "Kylemore", 59 pcs



19th C. Micromosaic, 2 1/2" h. x 5" w.



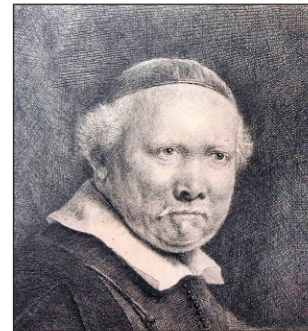
19th C. Viennese enamel, largest: 8 1/2" h.



Asian textiles



Jensen "Acorn", 57 pcs



19th C. Rembrandt



7 of 15 antique snuff & other boxes



19th C. Chinese



Shibayama, Meiji



1508 Durer



17th C. English coffer



Jade, diamond, plat.



Shibayama, Meiji, 12" h. (1 of 5 pcs)



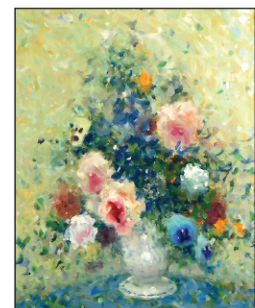
Hand-painted c. 1900, 40" h. x 48" w.



Carved wood 4' h. standing torchbearers



Chinese, 7'10" x 12', hand-painted silver foil



A. Gisson, oil, 19" h.



George Grosz, wc, 13" h.



Inlaid pedestals, 40" h.



Louis XVI style



Louisiana Expo., oak



Renaissance Revival, c. 1880-1910, 84" h.



19th C. needlepoint; 18th C. chest

**TERMS: IN-PERSON AUCTION AUDIENCE**

Auction begins at 5:30 PM. In addition to live bidding, Winter Associates will accept absentee and phone bids with a 23% Buyer's Premium and live online bidding will be available on Invaluable.com and Liveauctioneers.com with a 28% Buyer's Premium. A 3% discount is available to buyers with cash and approved checks. After the auction, pickup will be by appointment only, please email or call ahead and we will do our best to accommodate you.

LOCATION: 20 mins. west of Hartford, CT. Approx. 2 hrs. from NYC or Boston.



# Winter Associates

Auctioneers & Appraisers

**LIVE AUCTION: January 8th at 5:30PM**

**\*\* Heavy Snow Date: January 9th, call to confirm**

**Previews: Friday, 1/5, 12 - 4pm; Sunday, 1/7, 2 - 4pm; and Monday, 1/8, 12pm - 5pm; or by appointment.**

*Paintings, Prints & Sculpture; Asian shibayama, ivory, stone and wood carvings, ceramics, etc.; English and Continental Furniture & Accessories including Venetian enamel miniatures; Silver; Jewelry; Fine Ceramics & Glass; Clocks; Oriental Rugs; etc.*

See last week's edition to view our full page ad



19<sup>th</sup> C. Viennese enamel, 20+ pcs



Carved wood 4' h. torchbearers



15 Fine boxes



19<sup>th</sup> C. Micromosaic, 2 1/2" h. x 5" w.



1508 Durer woodcut



Battersea boxes



Codan, Jensen style, sterling



19<sup>th</sup> C. Chinese



Jade, diamond, plat.



Jensen "Acorn", 57 pcs



19<sup>th</sup> C. needlepoint; 18<sup>th</sup> C. chest



17<sup>th</sup> C. English coffer



Inlaid pedestals, 40" h.



Shibayama



Marian Steele, oil, 29" h.

View catalog online as of Dec. 29th at [www.AuctionsAppraisers.com](http://www.AuctionsAppraisers.com)

Also online at [Invaluable.com](http://Invaluable.com) & [LiveAuctioneers.com](http://LiveAuctioneers.com)

TERMS: 28% Buyer's Premium for MasterCard, Visa, or Discover.

OR 25% Buyer's Premium for Cash or Approved Checks.

Live, absentee and phone bids accepted at 25% Buyer's Premium!



21 Cooke Street,  
Plainville, CT 06062

860-793-0288



Winter Associates, Inc.