

Established in 1976

## COLLECTIONS AND ESTATES AUCTION Sunday, October 1<sup>st</sup> at 11 a.m.

PREVIEWS AT THE CRN GALLERY:

FRIDAY, SEPTEMBER 29 FROM 10 A.M. TO 5 P.M.

SATURDAY, SEPTEMBER 30 FROM 10 A.M. TO 3 P.M.

ALSO BY APPOINTMENT - LIMITED PREVIEW MORNING OF SALE

VISIT OUR WEBSITE FOR DETAILS: [www.crnauctions.com](http://www.crnauctions.com)

Follow us on Instagram: @crnauctions



18TH C. CHIPPENDALE MAHOGANY  
BLOCK-FRONT CHEST ON CHEST, 89\"/>



PAIR OF LEATHER FIRE BUCKETS  
CAMBRIDGE, MASSACHUSETTS  
DATED 1823



NEW JERSEY FEDERAL MAHOGANY  
CASED TALL CLOCK, 96\"/>



CHILDE HASSAM (BOSTON, 1859-1935)  
*TIDAL DAM AND BRIDGE, COS COB, 1902*  
PASTEL; 17.5 BY 21.75 IN.



AESTHETIC MOVEMENT  
INLAID BAMBOO DESK  
IN THE JAPANESE MANNER



JEAN DESPRES SILVER COLLAR NECKLACE  
ALBERT PALEY 14K GOLD RING, c. 1970  
VERDURA WOOD CUFF BRACELET



BOSTON FEDERAL SERVER  
ATTRIB. THOMAS SEYMOUR, 43\"/>



19TH C. SAILORS'  
SHELL VALENTINES  
(TWO OF SEVEN)



PAIR OF 18TH C. NEWPORT  
CHIPPENDALE SIDECHAIRS  
WITH STOP-FLUTED LEGS



PAIR OF 18TH C. PORTUGUESE CHAIRS



PAIR OF HEPPLEWHITE  
CARD TABLES  
PORTSMOUTH,  
NEW HAMPSHIRE

AMERICAN ANTIQUES  
FORMAL AND COUNTRY



MERCHANT  
SHIPPERS  
FLOOR GLOBE  
LONDON, 18\"/>



ENGLISH AND CONTINENTAL ANTIQUES  
PAIR OF ITALIAN 18TH C. ROCOCO COMMODES, 55\"/>

CRN AUCTIONS, INC., 57 Bay State Road, Cambridge, MA 02138

[www.LiveAuctioneers.com](http://www.LiveAuctioneers.com)

◆ REGISTER FOR ONLINE BIDDING ◆

[www.Invaluable.com](http://www.Invaluable.com)

WEB: [www.crnauctions.com](http://www.crnauctions.com)

PHONE: 617-661-9582

EMAIL: [info@crnauctions.com](mailto:info@crnauctions.com)

Established in 1976

## PHOTOGRAPHY



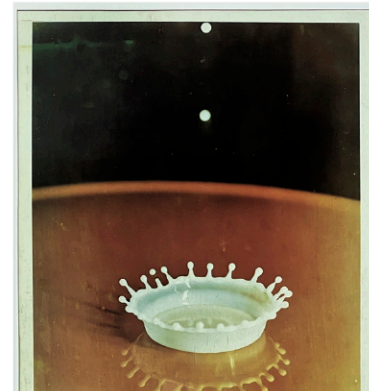
**EMILE A. GRUPPE**  
(NEW ENGLAND, 1896-1978)  
o/c, 30 BY 25 IN.



**HARRY ROSELAND** (AMERICAN, 1867-1950)  
DATED '04, o/c, 10 BY 14 IN.



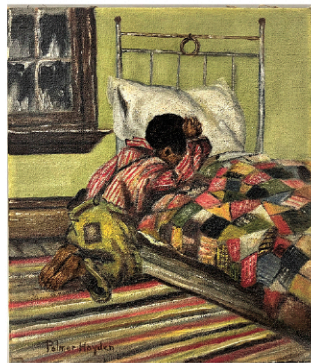
**JOHN F. PETO**  
(AMERICAN, 1854-1907)  
o/b, 6 BY 9 IN.



**HAROLD EDGERTON**  
(MASSACHUSETTS/MIT, 1903-1990)  
TRANSFER DYE PRINT SIGNED/DATED 1959



**JEAN JULES GEOFFROY**  
(FRENCH, 1853-1924)  
DATED 1901; o/c; 21.5 BY 25 IN.



**PALMER HAYDEN**  
(AMERICAN, 1890-1973)  
o/c, 14 BY 12 IN.  
HARLEM RENAISSANCE  
MOVEMENT ARTIST



**CHARLES BURCHFIELD**  
(AMERICAN, 1893-1967)  
WATERCOLOR, 20 BY 15 IN.



**BERENICE ABBOTT**  
(AMERICAN, 1898-1991)  
(one of two)  
Other photographs incl. Diane Arbus



**BERLIN KPM**  
PORCELAIN PLAQUE  
12.5 BY 10 IN.  
(ONE OF SEVERAL)

**ANGELICA KAUFFMANN**  
(SWISS/ENGLISH/  
ITALY, 1741-1807)  
o/METAL; 12"



**PAUL GAUGUIN**  
(FRENCH, 1848-1903)  
POLYNESIAN  
WOOD SPOON  
CARVED BY ARTIST



**EUGENE MARIOTON**  
(FRENCH, 1854-1933)  
BRONZE, 40" TALL  
ALSO MARKED TIFFANY & CO.



FRENCH FOLK ART  
TIN DOLL BANK WITH  
BISQUE HEAD AND  
ARTICULATED ARMS, 19"



**WILHELM H. KOERNER**  
(AMERICAN, 1878-1938)  
DATED 1920; o/c; 30 BY 30 IN.



PAIR OF ITALIAN ORNATELY CARVED  
MARBLE PEDESTALS, 43"H



LOUIS VUITTON

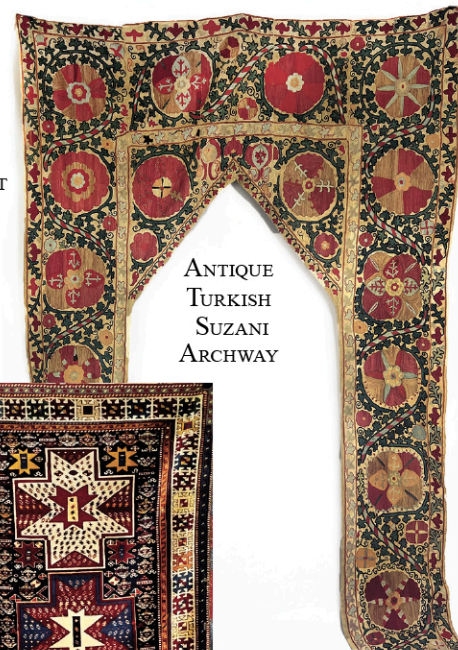


FRENCH MARBLE  
AND GILT BRONZE BUST  
SGN. D. WATRIN, 22"

CARVED  
CAROUSEL  
OSTRICH



**JULES  
STEINER**  
DOLL,  
PARIS



ANTIQUE  
TURKISH  
SUZANI  
ARCHWAY



KUBA RUNNER  
(partially shown)

**CRN AUCTIONS, INC.**, 57 Bay State Road, Cambridge, MA 02138

[www.LiveAuctioneers.com](http://www.LiveAuctioneers.com)

◆ REGISTER FOR ONLINE BIDDING ◆

[www.Invaluable.com](http://www.Invaluable.com)

WEB: [www.crnauctions.com](http://www.crnauctions.com)

PHONE: 617-661-9582

EMAIL: [info@crnauctions.com](mailto:info@crnauctions.com)