

Winter Associates

Auctioneers & Appraisers

LIVE AUCTION
July 24th at 5:30PM



Viennese and Russian enamels, Italian micro-mosaics, French bouille and other fine Continental; Vintage Silver; 19th & 20th C. Fine Art including Edgar Negret; Americana and reproductions by Eldred Wheeler, D. R. Dimes, Margolis; Asian Oriental Rugs; Handel and other lamps; Coins, 19th & 20th C. Books and Ephemera including Presidential signed; Baseball & Sports memorabilia, etc.

View catalog online as of July 14th at www.AuctionsAppraisers.com

Previews:

Friday, July 21, 12-4 pm

Sunday, July 23rd, 2-4 pm

Monday, July 24th, 12-5pm
or by appointment.

19th C. Viennese enamel including unusual forms (10); Russian cloisonné inc. 14K with jewels and silver (12); Italian pietra dura and micro-mosaics; French ormulu and Bouille; other fine Continental; 19th & 20th C. Art including Edgar Negret sculpture, paintings by Johann Berthelsen, Andrew Thomas Schwartz, George Anderson, Margaret Miller Cooper, Andrea Patrisi, Mario Sanzone, Scott M. Duncan, Harry Farlow, Albertus Eugene Jones, etc.; Important prints: two Albrecht Durer woodcuts c. 1505, Whistler etchings (3), Chauncey Ryder, Sol Lewitt silkscreen; Michael Waugh micrography diptych litho, etc.; Antique and Vintage Silver inc. 18th & 19th C. English and Continental, flatware incl. Christofle "Aria", International "Dubarry", Gorham "Melrose"; Fine reproductions by Eldred Wheeler, D. R. Dimes, Margolis, etc., many of tiger maple; Americana including stoneware, baskets, ship models, etc.; Asian including 60+ woodblocks, ivory, carved gilt wood, mixed metal, etc.; Oriental Rugs (21); Handel, Bradley & Hubbard and other lamps; Coins, many silver and gold proofs (24 lots); 19th & 20th C. Books and Ephemera including Presidential signed; Baseball & Sports memorabilia incl. tickets, signed baseballs, cards, etc.



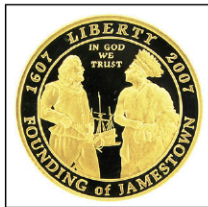
Durer, c. 1505



Russian silver & enamel, 15" h.



Durer, c. 1508



Coins, 20+ lots



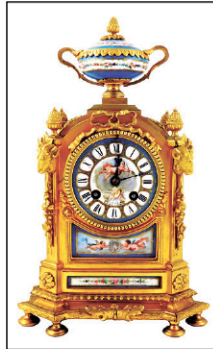
19th C. Viennese enamel, 7" & 12" h.



Russian 14K & silver guilloche enamel



French, 13" h.



Russian cloisonné on silver, 5" h.



Ambrosius Lamm for Dresden



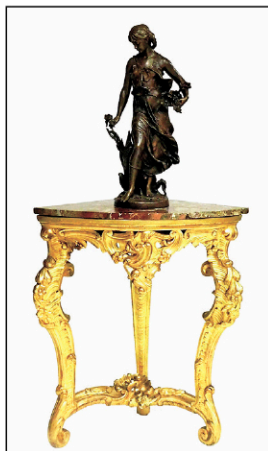
19th C. Viennese, 9" h.



19th C. micro-mosaic, 6" h.



Repousse stlg, 8" h.



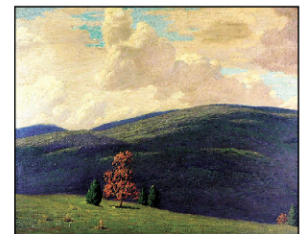
Gilt marble-top & 24" bronze



Lohe, 32" h.



Galle



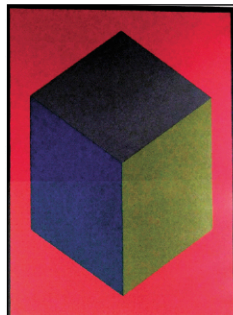
A. Schwartz, 23" h.



Tiger maple



Edgar Negret, 5 1/2" h.



Lewitt silkscreen



Anderson "Rockport", 15" h.



Napoleon & Josephine silver



Baseball, etc.



Cartier, etc.



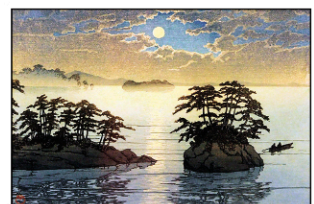
Christofle & other sterling



French bouille



M. Cooper "Fall in Lyme", 24" h.



60+ woodblocks



D. R. Dimes



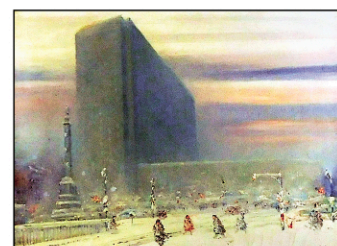
Pennsylvania style, 87" h. x 50" w.



E. Wheeler tiger maple



Eldred Wheeler tiger maple huntboard, 63" l.



Johann Berthelsen, 17" h.

TERMS: IN-PERSON AUCTION AUDIENCE - Auction begins at 5:30 PM. In addition to live bidding, Winter Associates will accept absentee and phone bids with a 23% Buyer's Premium and live online bidding will be available on Invaluable.com and Liveauctioneers.com with a 28% Buyer's Premium. A 3% discount is available to buyers with cash and approved checks. After the auction, pickup will be by appointment only, please email or call ahead and we will do our best to accommodate you.

LOCATION: 20 mins. west of Hartford, CT. Approx. 2 hrs. from NYC or Boston.

Winter Associates, Inc. • 21 Cooke Street, Plainville, CT 06062 • 860-793-0288