

RHODE ISLAND SCHOOL OF DESIGN ANTIQUQUE TOY COLLECTION AUCTION

Online only July 17th at 8pm EST - Preview 9am to 5pm day of sale!

An incredible collection of 18th through early 20th century dolls, miniatures, and toys deaccessioned from The Museum of Art, Rhode Island School of Design, Providence. Post World War II, the RISD Museum redirected its focus towards 20th century art, which included the closing of its early toy exhibit in 1961 with the sale of the Corliss-Carrington house where the majority of these items were exhibited. Since then, this collection has sat in RISD storage for over 50 years.



Attrib. Wilhelm Schimmel Carved Painted Wolf Dog



19th Century English Folk Art Detailed Clay Figure Diorama Display



C. 1880 G.A. Schwarz Tin Horse Cart

Bid on Bidlive.BruneauandCo.com for the lowest BP!



19C. Armand Marseille Marotte Bisque Musical Doll



Dated 1843 Empire Flame Mahogany Miniature Chest



Martin & Runyon Autoperipatetikos Walking Doll



C. 1880 American Pressed Tin Goat Pull Toy



C. 1840 Pennsylvania Painted Maple Doll Toy Settee



Early 19C. Red Painted Punched Tin Tole Lantern



C. 1710 American Painted Pine Doll Toy Blanket Chest



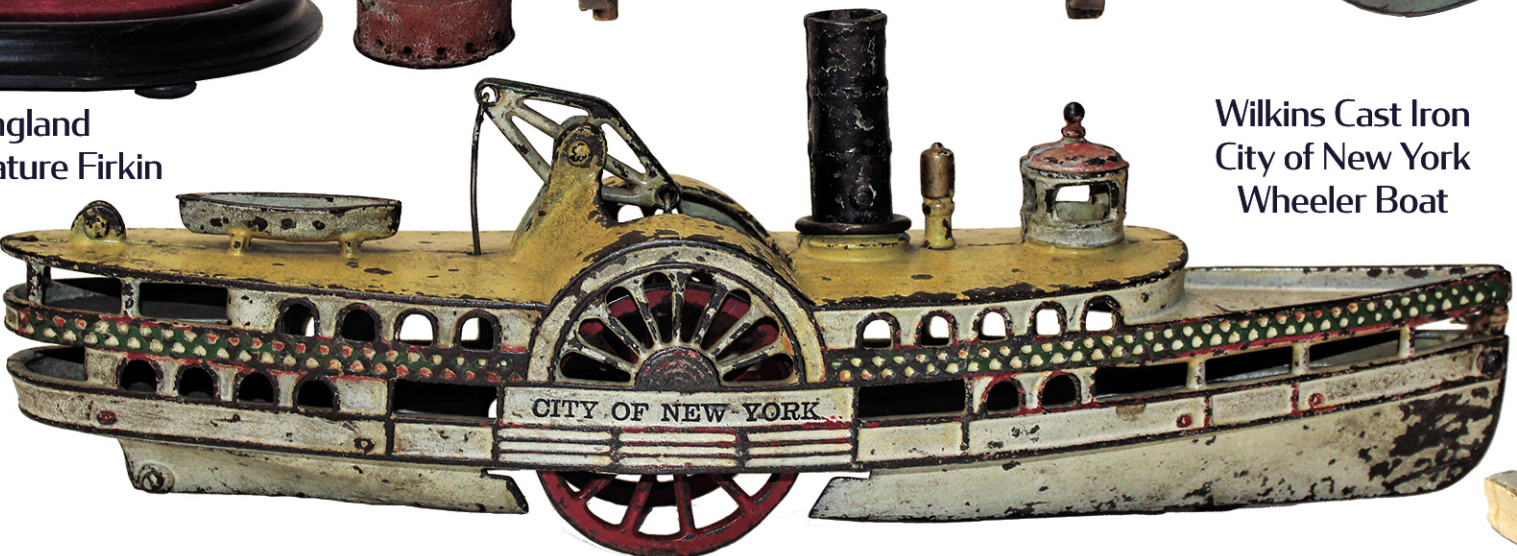
Incredible 1830 Paint Decorated Child's Sled



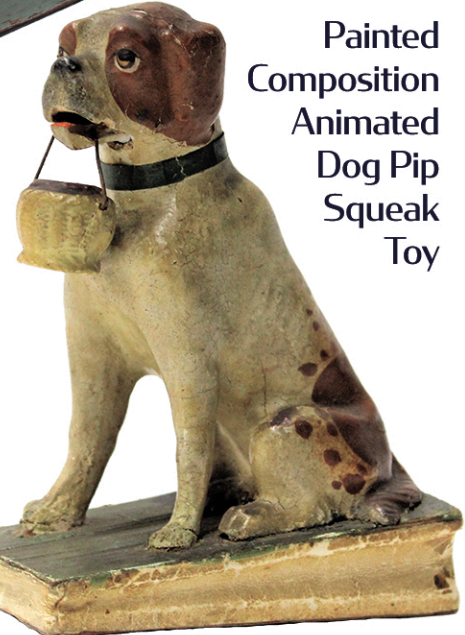
C. 1850 French Hand Painted Dancing Dolls Display



C. 1850 New England Copper Tacked Miniature Firkin



Wilkins Cast Iron City of New York Wheeler Boat



Painted Composition Animated Dog Pip Squeak Toy

DOWNLOAD OUR APP! Download on the App Store ANDROID APP ON Google Play FOLLOW US ON SOCIAL!

BruneauandCo.com
Info@BruneauandCo.com



401.533.9980
63 4th Ave. Cranston, RI