

Winter Associates

Auctioneers & Appraisers

LIVE AUCTION
May 8th at 5:30PM



Early American furniture and decorative arts; Traditional & Contemporary Art; Garden Sculpture; Coins; Silver; Books; Asian; Rugs; Glass; Ephemera, etc.

View catalog online as of Apr. 28th at www.AuctionsAppraisers.com

Previews: Friday, May 5th, 12-4 pm Sunday, May 7th, 2-4 pm

Monday, May 8th, 12-5pm or by appointment.

Americana from a Connecticut home including: 18th C. Connecticut Queen Anne highboy and lowboy; slant lid desk on frame, harvest table, fire screen, tall case clock, blanket chests (3), drop leaf table, stand, etc.; Americana including primitive tools, cookware, boxes, buckets, brassware, fireplace tools, treenware, hair trunk, table-top chests, etc.; Contemporary furniture include pair of Hans Olsen for Vagne Mobler armchairs, arc floor lamp, Danish rosewood mirror by Aksel Kjersgaard, Danish teak side chairs, lucite rolling stand, etc.; Paintings (35+) including Charles Ethan Porter oil, 19" h., Henry Varnum Poor, Benard Karfiol, Harry Farlow, Charles Noel Flagg, Michael Matthews, Peppino Gino Mangravite, George Turner, Fredrick Fenetty, Paul Zimmerman, Morton Fishman, Albertus E. Jones, etc.; Prints include Michael micrography litho pair, T.H. Benton "Missouri Farm Yard", After Pablo Picasso "Grand Maternite", Francisco Zuniga, Adolf Arthur Dehn, John Stobart, Margery Ryerson, John Willis, etc.; Sculpture including assorted Morton Fishman (American, 1936 - 2018) of CT, 25 pieces cast in steel or created from found metal objects, 95" h. to 8" h.; Coins (9 lots) including silver proofs, American 1895 \$5 gold coin, Austrian 1915 gold coins, 1787 Fugio cent, etc.; Silver including George III period and style tea set; London 1838 sterling flatware, 58 pcs, Bigelow Bros & Kennard, Lincoln & Foss, Ball, Black & Co., Dominick and Haff, Mulholland Brothers, William H. Thompson, Tuttle Silversmiths, etc.; Books (20+ lots) including Walt Whitman, etc.; Asian including 18th C. Chinese Export urns, 14" h.; eight immortals, Qing, 9" h.; Chinese bone 56" l. dragon boat, robes (2), altar box, chess set, shibayama tusk, cloisonné, shaded enamel on silver, jardineres, brush paintings, nesting tables, hibachi, etc.; Rugs (18) including antique and semi-antique, sizes range from 13' 2" x 9' 8" to 4' x 6'; Glass including Peter Bramhall, Ernest Gordon for Afors, Durand gold aurene, Lalique (11), paperweights (8), early bottles gin, early wine and spirit bottle, two chestnut flask bottles, etc.



Winchester 1876 model



18K micro-mosaic



Americana from CT home including cherry Q.A. highboy and lowboy from Newtown-Woodbury area



Qing Dynasty, Chinese, set of 8, 9" h.



19th C. iron manacles



George III period & style sterling



Charles E. Porter, oil, 19" h.



14K Waltham



1895 \$5 gold



Vintage 18K gold brooch



Chinese 18th C.



Qing Dynasty



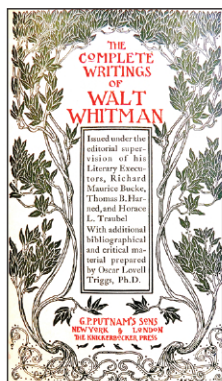
London stlg, 1838, 58 pcs



19th C. Americana



After Pablo Picasso "Grand Maternite", S.P.A.D.E.M.



Walt Whitman, 20 book lots



40" Beaded Huichol, 1 of 30+ pieces



Bramhall blown glass, 12" h.



Henry Varnum Poor



Monumental Chinese carved bone, 56" l.



Chinese ivory, 17" h.



Iron garden ornaments, 12" h. x 19" w.



Mid-century lamp; 2 of 25 Fishman sculptures



Thomas H. Benton, "Missouri Farm Yard", 1936



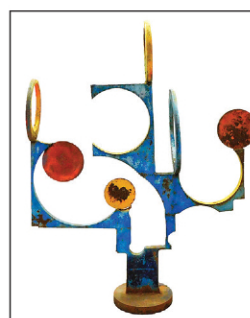
Enamel, 36" sq.



Michael Waugh pair, micrography detail, 34" h.



Morton Fishman steel sculptures, 35" diam. & 54" h.



TERMS: IN-PERSON AUCTION AUDIENCE
Auction begins at 5:30 PM. In addition to live bidding, Winter Associates will accept absentee and phone bids with a 23% Buyer's Premium and live online bidding will be available on Invaluable.com and Liveauctioneers.com with a 28% Buyer's Premium. A 3% discount is available to buyers with cash and approved checks. After the auction, pickup will be by appointment only, please email or call ahead and we will do our best to accommodate you.

LOCATION: 20 mins. west of Hartford, CT. Approx. 2 hours from NYC or Boston.

Winter Associates, Inc. • 21 Cooke Street, Plainville, CT 06062 • 860-793-0288

Winter Associates

Auctioneers & Appraisers

LIVE AUCTION: Monday, May 8th at 5:30PM

Previews: Friday, May 5th, 12-4 pm Sunday, May 7th, 2-4 pm and Monday, May 8th, 12-5pm or by appointment.

Early American furniture and decorative arts; Traditional & Contemporary Art; Garden Sculpture; Coins; Silver; Books; Asian; Rugs; Glass; Ephemera, etc.



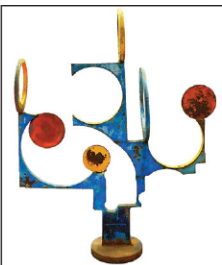
Iron garden ornaments, 12" h. x 19" w.



1895 \$5 gold



Mid-century lamp; 2 of 25
Fishman sculptures



Fishman, steel, 35" diam.



Chinese 18th C.



London stlg, 1838, 58 pcs



Thomas Hart Benton,
"Missouri Farm Yard", 1936



13' x 9', 1 of 14 estate rugs



18K micro-mosaic



Charles E. Porter,
oil, 19" h.



Winchester 1876 model



18th C. Connecticut

**View catalog online as of Apr. 28th at www.AuctionsAppraisers.com
Also online at Invaluable.com & LiveAuctioneers.com**

TERMS: 28% Buyer's Premium for MasterCard, Visa, or Discover.
OR 25% Buyer's Premium for Cash or Approved Checks.
Live, absentee and phone bids accepted at 25% Buyer's Premium!



**21 Cooke Street,
Plainville, CT 06062
860-793-0288**



Winter Associates, Inc.