

CAPITAL COLLECTIONS AUCTION

FRIDAY, MAY 12TH AT 10AM



Frank Stella (American, b. 1936), *Juam: State I: From Imaginary Places*, relief, woodcut, etching and aquatint with hand-coloring on TGL handmade paper, \$10,000-\$15,000



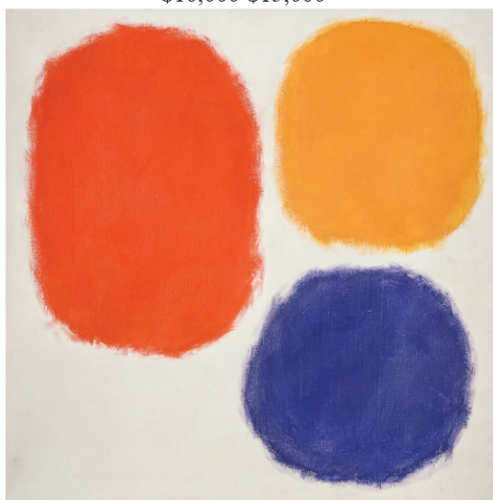
Lalique 'Champs-Élysées' Six-Light Single-Tier Chandelier, Model 10112, Post 1978, \$4,000-\$6,000



Sam Maloof (American, 1916-2009) Carved Walnut Low Back Settee, 1984, \$15,000-\$20,000



Frank Xavier Leyendecker (American, 1877-1924), *Woman Seated in a Wing Armchair*, oil on canvas, \$10,000-\$20,000



Ray Parker (American, 1922-1990), *Untitled (Abstract)*, oil on canvas, \$10,000-\$20,000



Pair of Worcester Porcelain Kakiemon Palette Covered Tureens with Undertrays and a Dish, *Phoenix Pattern*, Dr. John Wall Period (Circa 1765), \$800-\$1,200



Georg Jensen Sterling Flat Table Service for Sixteen, *Acorn Pattern*, \$3,000-\$5,000



LeRoy Neiman (American, 1921-2012), *English Paddock*, oil on board, \$20,000-\$25,000



Norman Bluhm (American, 1921-1999), *Helen*, oil on canvas, \$10,000-\$15,000



Philip & Kelvin LaVerne 'Spring Festival' Coffee Table, New York, 1960s, \$5,000-\$7,000



James Kivatoruk Moses (American, 1900-1982), *Whale Hunting*, watercolor and ink on paper, \$3,000-\$5,000

♦ **Exhibition:** Saturday, May 6, 10am to Noon; Monday-Wednesday, May 8th-10th, 10am to 4pm; Thursday, May 11th, 10am to 2pm.

♦ **Bid in-person, online, by phone, or by absentee bid.**

♦ To preview the complete catalogue and register to bid visit weschlers.com, invaluable.com or auctionzip.com

♦ For more information on any lot in the sale, call 202-628-1281 or email info@weschlers.com

Our next Capital Collections Auction is September 22nd. Consignment deadline: August 18th

We are always accepting quality consignments. Contact us at info@weschlers.com to learn more.

Weekly Metro Online Auctions ♦ Quarterly Capital Collections/Gallery Auctions

Weschler's Auctioneers and Appraisers LLC - Since 1890

40 West Gude Drive, Suite 100, Rockville, Maryland 20850

TEL: 202-628-1281 ♦ FAX: 202-628-2366 ♦ www.weschlers.com