

# Winter Associates

Auctioneers & Appraisers

**LIVE AUCTION**

**March 20th at 5:30PM**

\*\*\*Heavy Snow Date: March 21st, call to confirm



**Americana including Chapin School furniture; Margolis including block front case pieces; Paintings; Prints; Sculpture; Asian including Woodblocks, Sculpture, Cloisonne; Continental Enamel, Ceramics, Porcelain & Glass; Tiffany and other Silver; Fine watches and other jewelry; Books; Coins; Oriental Rugs; Sports and other Collectable Cards. etc.**

View catalog online as of Mar. 10th at [www.AuctionsAppraisers.com](http://www.AuctionsAppraisers.com)

## Previews:

Friday, Mar. 17th, 12-4 pm

Sunday, Mar. 19th, 2-4 pm

Monday, Mar. 20th, 12-5pm  
or by appointment.

Early American furniture including: Chapin School oxbow chest and dropleaf dining table; William and Mary high chest c. 1740; early 19th C. blanket chest with original sponge paint; Chippendale: corner chair c. 1760, three matching ball and claw side chairs; Margolis: block front desk and chest, chest on chest, side chairs (10), and mirrors (2); Paintings by Cleveland Salter Rockwell, Anton Otto Fischer, George Albert Thompson, Benard Karfiol, Benjamin Foster, George Herbert Macrum, Eric Isenburger, etc.; Etchings and lithographs by Thomas Hart Benton, Maria Elena Viera da Silva, Jean-Francois Raffaelli, Elizabeth O'Neill Verner, Jay McVicker, Robert Kipness, William Behnken, Vera Andrus, George Plowman, Louis Legrand, Louis Orr, Ernest Roth, Jacques Callot, Edy Le-Grand, etc.; Sculpture including bronze bust, 1889, signed "J. or F. Coosemans" and "J. Petermann, Fondeur Bruxelles"; Asian including Woodblock Prints (23) by Hasui Kawase (4), Shiro Kasamatsu, Katsushika Hokusai, Torii Kiyomasa, Torii Kiyomasa, Toyohara Kunichika, etc.; Sculpture including gilt and mixed metal, ivory, deities and mythological figures; Cloisonne; Continental Enamel including large 19th C. Viennese enamel table-top casket, guilloche enamel and silver vases, opera glasses, etc.; Micro-mosaic of St. Peter's Basilica, mosaic only: 9" diam.; Ceramics, Porcelain & Glass including Royal Copenhagen "Flora Danica", Herend, Steuben, Hawkes, Baccarat, St. Louis, Lalique, etc.; Tiffany and other Silver including two sterling flatware sets by Gorham "Décor" and "Greenbriar", Continental desk set, Russian cigar box, etc.; Fine watches including Platinum Tiffany & Co. Patek Philippe Pocket Watch, 18K wristwatch by Gubelin, and other jewelry, etc.; Books (10 lots) including Rudyard Kipling, Collected Works, New York, 1941, 28 vols.; Coins; Oriental Rugs; Sports and other Collectable Cards, etc.



Patek Philippe, Platinum, Tiffany



18K Gubelin Chronograph



Cleveland Salter Rockwell, "Mount Rainier", oil, 19" h.



Gorham "Décor" sterling



14K and gems



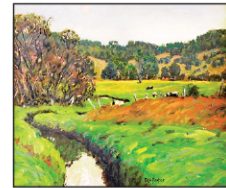
Continental silver inkwell



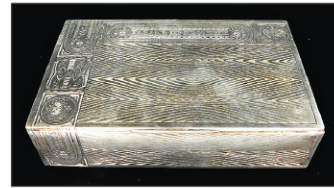
Micro-mosaic, 9" diam.



Elizabeth O. Verner



Ben Foster, oil, 17" h.



Russian silver



19th C. Viennese enamel



Herend "Rothschild"



Chinese silver & enamel, 4 3/4" h.



Shibiyama, 11" h.



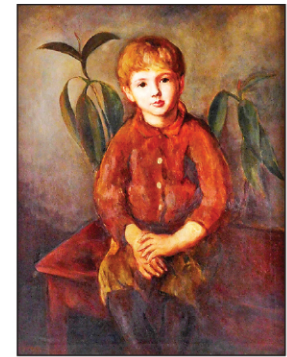
Chinese cloisonne stands, 16" h.



Shibiyama tusks, 8" h.



Thomas H. Benton "White Calf"



Karfiol, oil, in 1913 Armory show



12 Royal Copenhagen "Flora Danica"



Hasui Kawase, 2 of 23 woodblocks



1901 Cigar cutter



Chinese censor, 14" h.



Early 19th C., original sponge paint



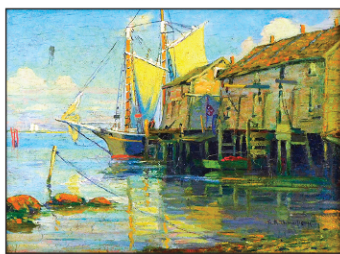
5 lots of paperweights



Otto Anton Fischer, oil, 23" h.



Chapin School, c. 1790, oxbow, cherry, from a Connecticut estate, quadrant base



G. T. Thompson, "Fishing Boat, Noank", oil, 11" h.



Margolis block front



William & Mary, early 18th C.



Margolis block front

## TERMS: IN-PERSON AUCTION AUDIENCE

**Auction begins at 5:30 PM.** In addition to live bidding, Winter Associates will accept absentee and phone bids with a 23% Buyer's Premium and live online bidding will be available on [Invaluable.com](http://Invaluable.com) and [Liveauctioneers.com](http://Liveauctioneers.com) with a 28% Buyer's Premium. A 3% discount is available to buyers with cash and approved checks. After the auction, pickup will be by appointment only, please email or call ahead and we will do our best to accommodate you.

**LOCATION:** 20 mins. west of Hartford, CT. Approx. 2 hours from NYC or Boston.

Winter Associates, Inc. • 21 Cooke Street, Plainville, CT 06062 • 860-793-0288



# Winter Associates

Auctioneers & Appraisers

**LIVE AUCTION: Monday, Mar. 20th at 5:30PM**

**\*\*\*Heavy Snow Date: March 21st, call to confirm**

Previews: Friday, Mar. 17th, 12-4 pm; Sunday, Mar. 19th, 2-4 pm and Monday, Mar. 20th, 12-5pm or by appointment.

*Americana including Chapin School furniture; Margolis including block front case pieces; Paintings; Prints; Sculpture; Asian including Woodblocks, Sculpture, Cloisonne; Continental Enamel, Ceramics, Porcelain & Glass; Tiffany and other Silver; Fine watches and other jewelry; Books; Coins; Oriental Rugs; Sports and other Collectable Cards. etc.*



Rudyard Kipling; 1 of 13 book lots



Chapin School dropleaf dining table and oxbow chest, c. 1790



Otto Anton Fischer, oil, 23" h.



T. H. Benton "White Calf"



Early 19th C., original paint



Patek Philippe, Tiffany



18K Gubelin Chronograph



Cleveland S. Rockwell, "Mount Rainier", oil



Continental silver



Bergman



19th C. Viennese



Micro-mosaic, 9" diam.



Kawase, 1 of 23



Chinese cloisonne stands, 16" h.



Shibi-yama, 11" h.

View catalog online as of Mar. 10th at [www.AuctionsAppraisers.com](http://www.AuctionsAppraisers.com)

Also online at [Invaluable.com](http://Invaluable.com) & [LiveAuctioneers.com](http://LiveAuctioneers.com)

TERMS: 28% Buyer's Premium for MasterCard, Visa, or Discover.

OR 25% Buyer's Premium for Cash or Approved Checks.

Live, absentee and phone bids accepted at 25% Buyer's Premium!



21 Cooke Street,  
Plainville, CT 06062

860-793-0288



Winter Associates, Inc.