

## CAPITAL COLLECTIONS AUCTION

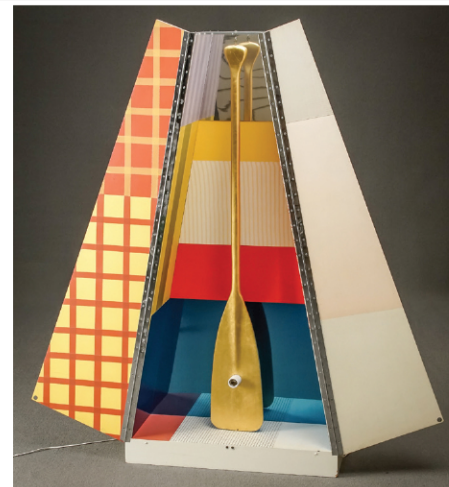
### FRIDAY, MARCH 10TH AT 10AM



Arthur Beecher Carles (American, 1882-1952), *Dancers*, oil on canvas, \$20,000-\$30,000



Sam Gilliam (American, 1933-2022), *Untitled*, acrylic and mixed media on handmade paper, \$25,000-\$35,000



Robert Rauschenberg (American, 1925-2008), *Publicon-Station I*, painted wood cabinet with fabric collage, Plexiglas, aluminum and gold leaf paddle, \$8,000-\$12,000



Mies van der Rohe 'Barcelona' Couch Daybed, Knoll International, Circa 1990-2000, \$1,000-\$2,000



Roger Shimomura (American, b. 1939), *Rambo 12*, oil on canvas, \$4,000-\$6,000



Cartier 18-Karat Yellow-Gold and Diamond Brooch, \$3,000-\$5,000



Walter Launt Palmer (American, 1854-1932), *Snowy Landscape*, oil on canvas, \$10,000-\$15,000



Leslie Garland Bolling (American, 1898-1955), *Portrait of Bishop Brooks*, hand-carved wood sculpture, \$5,000-\$7,000



Augusta Savage (American, 1892-1962), *Singing Women: Three Works*, green painted plaster sculpture together with two later bronze casts of mold, \$5,000-\$10,000



Effie Lee Newsome (American, 1885-1979), *Manuscript of 'Child and Nature, A Children's Reader'*, with illustrations by James Lesesne Wells (American, 1902-1993), together with *Gladiola Garden*, \$10,000-\$20,000



Pair of Van Cleef & Arpels Platinum and Diamond French Clip-Back Pierced Earrings, Circa 1965, \$10,000-\$15,000

♦ **In-Person Exhibition:** Saturday, March 4, 10am to Noon;

Monday-Wednesday, March 6th-8th, 10am to 4pm; Thursday, March 9th, 10am to 2pm.

♦ **Bid in-person, online, by phone, or by absentee bid.**

♦ **To preview the complete catalogue and register to bid visit [weschlers.com](http://weschlers.com), [invaluable.com](http://invaluable.com) or [auctionzip.com](http://auctionzip.com)**

♦ **For more information on any lot in the sale, call 202-628-1281 or email [info@weschlers.com](mailto:info@weschlers.com)**

**Our next Capital Collections Auction is May 12th. Consignment deadline: April 17th**

**We are always accepting quality consignments. Contact us at [info@weschlers.com](mailto:info@weschlers.com) to learn more.**

**Weekly Metro Online Auctions ♦ Quarterly Capital Collections/Gallery Auctions**

## Weschler's Auctioneers and Appraisers LLC - Since 1890

40 West Gude Drive, Suite 100, Rockville, Maryland 20850

TEL: 202-628-1281 ♦ FAX: 202-628-2366 ♦ [www.weschlers.com](http://www.weschlers.com)