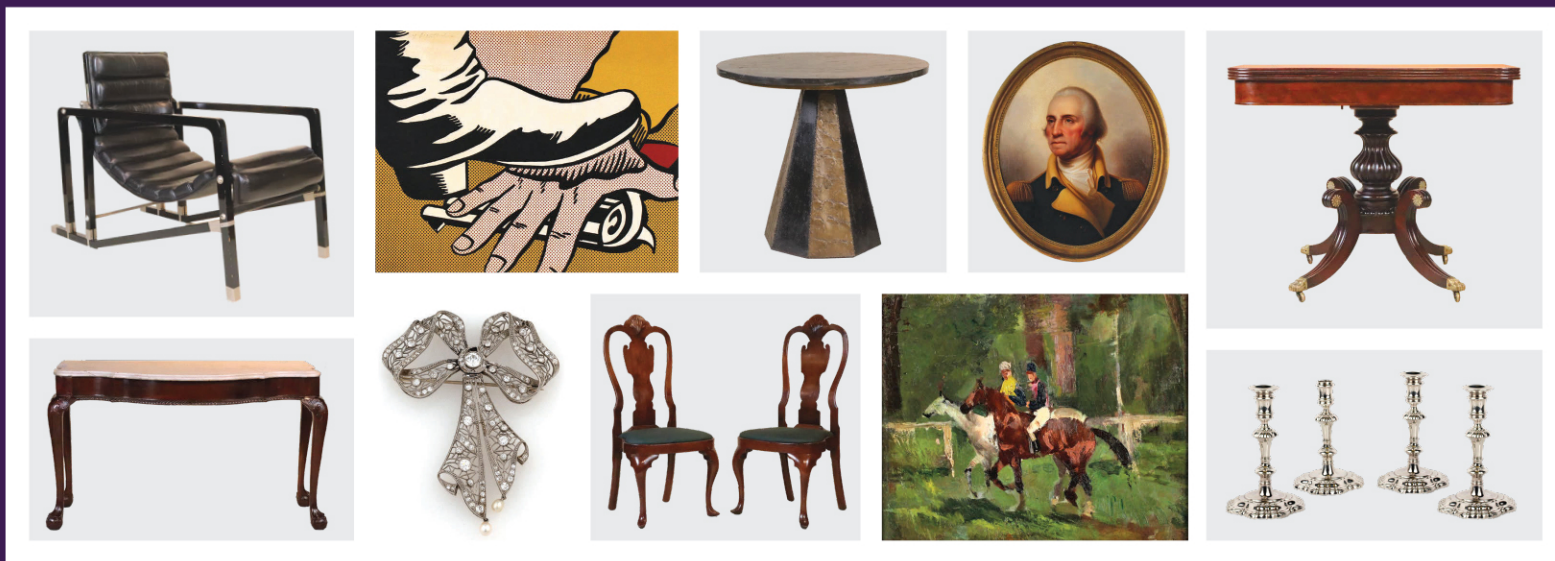




ESTATE TREASURES AUCTION

FEATURING SELECTIONS FROM THE STANLEY WEISS COLLECTION

MARCH 8TH, 9TH & 10TH AT 10AM | LIVE ONLINE AT NYEANDCOMPANY, LIVEAUCTIONEERS, INVALUABLE AND BIDSQUARE.



PREVIEW/PRE-BID: **FEB 22 - MAR 10.** AT NYEANDCOMPANY, INVALUABLE, LIVEAUCTIONEERS AND BIDSQUARE.
VISIT: **FEB 27 - MAR 9.** AT BLOOMFIELD NEW JERSEY GALLERY, 20 BEECH STREET, 07003, 10AM-4PM WEEKDAYS.

After Eileen Grey, Black Transat Chair, ca 1985; Roy Lichtenstein (American, 1923-1997), "Foot and Hand", Lithograph; Paul Evans Stone Top and Metal Occasional Table, Paul Evan Studio, New Hope, PA, ca. 1960s; After Rembrandt Peale, "Porthole Washington" Oil on Canvas; Classical Figured Mahogany Card Table, Salem, MA, ca. 1820; Chippendale Mahogany Marble Top Pier Table, New York, 1760-1780; Edwardian Gold Diamond En Tremblant Bow Brooch; Pair of Queen Anne Walnut Side Chairs, Philadelphia, ca. 1740-60; Attributed to Rene Pierre Charles Princeteau (French, 1843-1914), Jockeys and Horses, Oil on Canvas; Set of Four George II Sterling Baluster Form Candlesticks, London, JAS Gould (1736-7) and JNO Gould (1740-41)

