

# Winter Associates

Auctioneers & Appraisers

**LIVE AUCTION**  
**February 20th at 5:30PM**

\*\*\*Heavy Snow Date: February 21st, call to confirm



Fine Continental silver, gold and enamel decorative arts; Clocks; Russian jeweled silver & 14K; Jewelry; Micro-mosaics; Asian/ Paintings & Prints; Sculpture; Silver; Garden & Victorian Furniture; Stamps, etc.

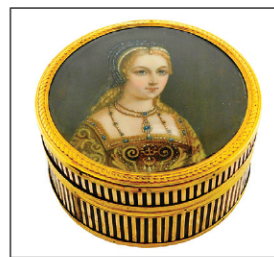
View catalog online as of Feb. 10th at [www.AuctionsAppraisers.com](http://www.AuctionsAppraisers.com)

## Previews:

Friday, Feb. 17th, 12-4 pm • Sunday, Feb. 19th, 2-4 pm

Monday, Feb. 20th, 12-5pm or by appointment.

Fine Continental silver, gold, and enamel decorative arts: Viennese enameled music boxes (4), clocks (3), perfume caskets (2), jewelry chests (3) and two guilloche enamel annular clocks; French Sevres type and bronze Napoleon form mantel clocks; Russian jeweled silver cloisonné kovsh set and trinket boxes (3), Fabergé style eggs (3) and 14K frames and box; Jewelry including gold, enameled, micro-mosaic, vintage, etc., (38); Four framed Micro-mosaics of Roman Ruins, mosaic size: 4 3/4" w., also paperweights (4) and boxes (5); Asian pair of palace size cloisonné censors, 70" h., embroidered floor screen, woodblocks (30), scrolls (7), ivory and metal sculpture (14), table screens (3), etc.; Paintings by Eugenio E. Zampighi "Mother and Children", Michael Matthews, pair of Chinese Harbor scenes, T. Bailey, Ezio Marzi, Irma Barnes, P. Algozzini, Hendrik Jan Verhaaf, John Adamos Manol, etc.; Prints by Jennifer Bartlett, "Autumn" 1990, color screen, series "The Four Seasons", ed 43/62, 32" h., Louis Philibert Debucourt, Gerald Fairclough, Denise Marovitz, Marcia Marx, Andrew Karoly, etc.; Sculpture including Bill Starke "Skydiver" bronze, 21" l., Kieff Antonio Grediaga bronze, 10" h., two bronzes after Guillaume Geefs and Jean-Baptiste Carpeaux, Art Deco and Classical style bronzes (3); Sterling including Lunt "Eloquence" flatware set; Garden & Victorian Furniture including cast iron benches (3), garden sculptures (3), Sheraton bowfront chest, French and Federal style display cabinets, marble and wood pedestals (5), Shaw Walker Arts & Crafts file cabinet, and Victorian: library table, roll top desk, brass and painted bedstead, etc.; Stamps from three collectors including: Caribbean British Commonwealth, U. S., British Oceania, German, Great Britain, Israel, United Nations, etc.



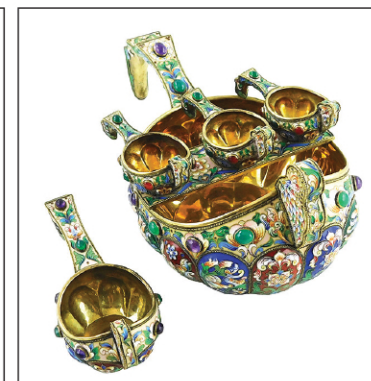
18K



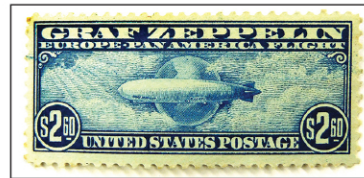
18K & enamel



14K & diam., Faberge form



Russian kovsh set, silver & enamel, 12" l.



Stamps, 3 Collections; 11 lots



Faberge form jewel & enamel music box



19th C. Viennese



Faberge style jewel & enamel music boxes



19th C. Sevres type jewel chest



19th C. Viennese, 10" h.



Viennese silver, 10" h.



Lunt "Eloquence" stlg 77pcs



Rare form, 11" h.



Framed 19th C. Roman Ruins Micro-mosaic set, mosaic size only: 4 3/4" l.



19th C. French



M. Matthews, 1 of 2 Chinese Harbor oils, 17" h.



18K Mughal w. min. portraits



19th C. Chinese, 43" h.



J. L. Bartlett "Autumn", 32" h.



Kieff Grediaga



18K Egyptian style



E. Zampighi, oil, 21" h.



B. Starke 21" w.



22k; 30+ lots of jewelry



Chinese Palace size cloisonné censors, 70" h.



19th C. Mughal



Set of 6 Syrian, MOP inlay



19th C. cast iron



Napoleon bronze c. 1860

**TERMS: IN-PERSON AUCTION AUDIENCE**  
Auction begins at 5:30 PM. In addition to live bidding, Winter Associates will accept absentee and phone bids with a 23% Buyer's Premium and live online bidding will be available on Invaluable.com and Liveauctioneers.com with a 28% Buyer's Premium. A 3% discount is available to buyers with cash and approved checks. After the auction, pickup will be by appointment only, please email or call ahead and we will do our best to accommodate you.

**LOCATION:** 20 mins. west of Hartford, CT. Approx. 2 hours from NYC or Boston.

Winter Associates, Inc. • 21 Cooke Street, Plainville, CT 06062 • 860-793-0288



# Winter Associates

Auctioneers & Appraisers

**LIVE AUCTION: Monday, Feb. 20th at 5:30PM**

**\*\*\*Heavy Snow Date: February 21st, call to confirm**

Previews: Friday, Feb. 17th, 12-4 pm; Sunday, Feb. 19th, 2-4 pm; Monday, Feb. 20th, 12-5pm  
or by appointment.

Fine Continental silver, gold, and enamel decorative arts: Viennese enameled music boxes, clocks, perfume caskets, jewelry chests and two guilloche enamel annular clocks; French Sevres type and bronze Napoleon form mantel clocks; Russian jeweled silver cloisonné kovsh set and trinket boxes, Fabergé style eggs and 14K frames and box; Jewelry including gold, enameled, micro-mosaic, vintage, etc.; Framed Micro-mosaics; Asian palace size cloisonné censors, embroidered floor screen, woodblocks, scrolls, ivory and metal sculpture, table screens, etc.; Paintings & Prints; Sculpture; Silver; Garden & Victorian Furniture; Stamps, etc..



Stamps, 3 Collections



19th C.  
Viennese



14K, Fabergé form



Russian silver  
kovsh set



19th C. French



Fabergé type



Rare form, 11" h.



18K Egyptian style



18K & enamel



Fabergé type music box



19th C. Viennese



Set of 4 micro-mosaics



30+ lots of Jewelry



Set of 6 Syrian



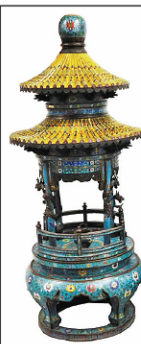
Kieff



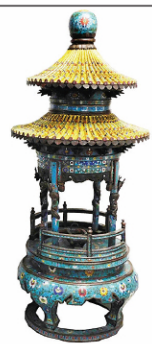
Bartlett "Autumn", 32" h.



E. Zampighi, oil, 21" h.



Chinese Palace size cloisonné censors, 70" h.



View catalog online as of Feb. 10th at [www.AuctionsAppraisers.com](http://www.AuctionsAppraisers.com)  
Also online at [Invaluable.com](http://Invaluable.com) & [LiveAuctioneers.com](http://LiveAuctioneers.com)

TERMS: 28% Buyer's Premium for MasterCard, Visa, or Discover.  
OR 25% Buyer's Premium for Cash or Approved Checks.  
Live, absentee and phone bids accepted at 25% Buyer's Premium!



21 Cooke Street,  
Plainville, CT 06062  
860-793-0288



Winter Associates, Inc.