

Winter Associates

Auctioneers & Appraisers

LIVE AUCTION

January 16th at 5:30PM

*****Heavy Snow Date: January 17th, call to confirm**



Asian including shrine, cloisonne screen, altars, woodblocks, sculpture, textiles, ceramics, etc.; 17th-19th C. American and Continental Antiques including Museum Deaccessions; Pietra Dura and Micro-mosaic Collection; Contemporary; Coins; Stamps; Jewelry; Prints; Paintings; Books; Silver; Oriental Rugs; Courtenay Lead Soldiers; Paperweights, etc.

View catalog online as of Jan. 6th at www.AuctionsAppraisers.com

Previews:

Friday, Jan. 13th, 12-4 pm • Sunday, Jan. 15th, 2-4 pm
Monday, Jan. 16th, 12-5pm or by appointment.

Asian including shrine, cloisonne floor screen, ivory and cloisonné table screens, altars, chests, woodblocks (38), sculpture including bronze, stone, wood and metal (13), netsuke (7), textiles including Qing dynasty Manchu wedding robe, Mandarin rank badges (3), and embroideries (11), ceramics, etc.; 17th - 19th C. American and Continental Antiques featuring Museum Deaccessions including 16th/ 17th C. Spanish Vargueno, Sicilian cart, 17th C. footstool, 18th C. ladderback, Bannister and Queen Anne chairs, pine barrel, Federal drop leaf table, along with a selection of early chairs, Queen Anne (3), Chippendale (1), Windsor (5), along with tavern table, stands (2), Pembroke tables (3); Continental library table 90" l., dining tables (3) including two Federal style banquet and one gateleg, set of Chippendale style armchair and side chairs (9), set of Hepplewhite form shield-back chairs (8); Pietra Dura and Micro-mosaic Collection, including unusual Pietra dura centerpiece basket set with nine inlaid panels 9 1/4" w., Pietra Dura boxes (3) and plaques (10) with figural and floral decoration, along with impressively large and detailed micro-mosaic of interior court scene of Prince kissing a painting, 8 1/2" h. x 11" w., and a 18K Micro-mosaic pendant on chain of St. Peter's Basilica set in green malachite, 1 3/4" w.; Contemporary "Flex Safari" lounge chairs by Ingmar Relling (pair); Coins, including gold and silver (10 lots); Stamps featuring an Important Canadian Collection (27 albums); Gold and jewels include a 14K yellow gold and pink guilloche enamel pill box in the manner of Faberge with cabochon ruby and Imperial Eagle design to top, a pair of 14K, diamond and ruby earrings by Bulgari, as well as a variety of other jewelry containing diamonds, sapphires, rubies, opal, 18K, 14K, Platinum, cameos, miniature portraits, enamel, etc.; Etchings by William Hogarth, Frederick Childe Hassam, Renoir, Anders Zorn, Manuel Robbe, Whistler, Edgar Chahine, Raffaelli, Gattier, Legrand, etc.; Paintings by Adriaen Van Der Werff, Roger Van Damme, Jacques Gautherin, Gershon Camassar, Sterling Strauser, Dan Radin, Irving Amen, Gluck Sandor, Bill Mayes, McCloy, etc.; Books by Tolstoi, Dickens, Melville, Bronte Sisters, Robert Browning, James Riley, etc., many complete sets and/or with numerous volumes, some with handsome leatherbound and gilded covers; Silver including repousse Tiffany bowl 9 1/2" diam. and many Franklin Mint ingot sets; Oriental Rugs (9) and hooked (4); Courtenay Lead Soldiers (23 pcs); Paperweights (13) including Rosenfeld, Ayotte, Tarsitano, Trabucco, Kazium, G. Smith, Banford, Perthshire, etc.; clocks (4) including Tiffany & Co. Pagoda mantel, Continental ormolu and champeve mantel, Elliot London 4-rod bracket, and New Haven figural gilt, etc.



Qing ivory, 10" h.



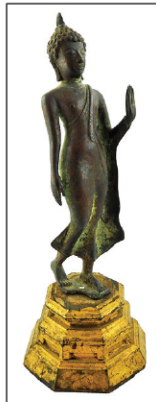
Chinese cloisonne, 65" h. x 96" w.



c. 1900 shrine, 43" h.



Tiffany stlg, 9"



Sukhothai



Chinese, filigree & enamel, 13" x 22"



Cricket cages, Qing



Kiyoshi Saito, 1 of 2



Southwestern



1 of 5 fur coats



Tiffany; Cont. ormolu, champeve



Manchu robe, Qing; Chinese altar form, 70" l.



Chinese silver



Renoir (Delteil 24)



14K painted



Villon etch. 1908



1 of 15 Pietra dura



19th C. micro-mosaic, 10" x 13"



Canadian Coll., 27 albums



Gold & silver coins



Courtenay lead soldiers, 23 pcs



Hogarth, 1747, set of 12



Van Der Werff, 17th C. oil



Bulgari, 18K, ruby, diam.



18K & enamel 2" cameo



18K Micro-mosaic, 1 3/4" w.



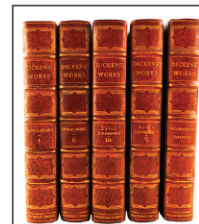
Toliro 18K, enamel



13 signed



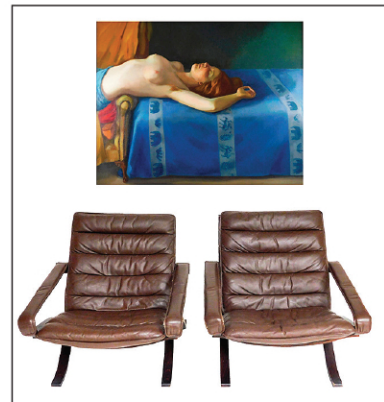
14K, 4ct. tw. Diamonds



Dickens



Spanish Vargueno, 16th/ 17th C.



Westnoga "Flex Safari" by Relling; Van Damme oil



18th C. American; Camassar oil



Russian lacquered chest on stand, 43" h.

TERMS: IN-PERSON AUCTION AUDIENCE
Auction begins at 5:30 PM. In addition to live bidding, Winter Associates will accept absentee and phone bids with a 23% Buyer's Premium and live online bidding will be available on Invaluable.com and Liveauctioneers.com with a 28% Buyer's Premium. A 3% discount is available to buyers with cash and approved checks. After the auction, pickup will be by appointment only, please email or call ahead and we will do our best to accommodate you.

LOCATION: 20 mins. west of Hartford, CT. Approx. 2 hours from NYC or Boston.

Winter Associates, Inc. • 21 Cooke Street, Plainville, CT 06062 • 860-793-0288