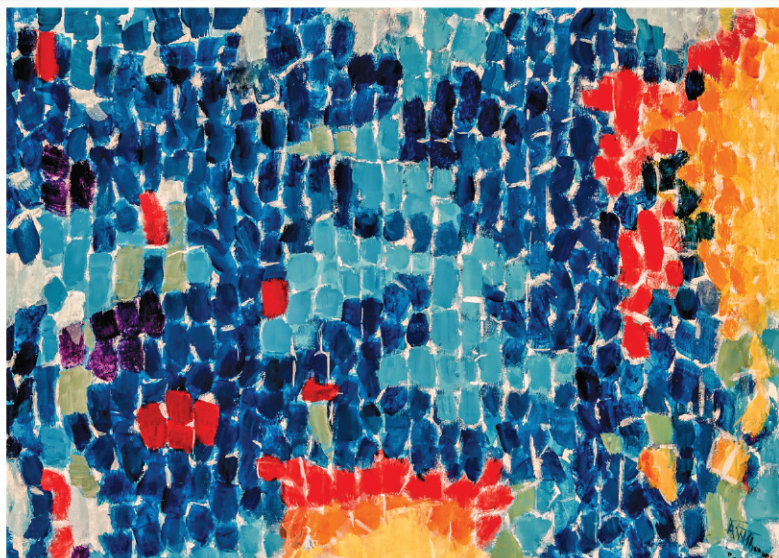


CAPITAL COLLECTIONS AUCTION

FRIDAY, DECEMBER 9TH AT 10AM



Platinum, Fancy Intense Yellow Diamond and Diamond Ring, \$50,000-\$100,000



Alma Woodsey Thomas (American 1891-1978), *Sparkling Dew on Spring Flowers*, acrylic on canvas, \$300,000-\$500,000



George Nakashima (American 1905-1990), Free-Edge Elmwood 'Frenchman's Cove' Dining Table, Circa 1960s, \$10,000-\$15,000



Walter Inglis Anderson (American 1903-1965), *Owl in Pine Woods*, watercolor on paper, \$8,000-\$12,000



Paul Jenkins (American 1923-2012), *Phenomena Over Compass*, acrylic on canvas, \$10,000-\$20,000



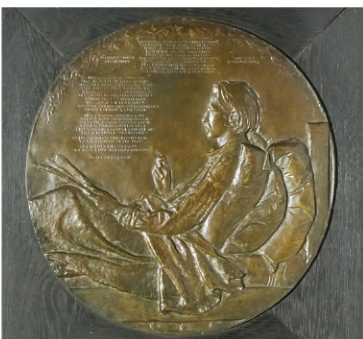
Handel Green Mosserine and Bronze Table Lamp, First Quarter 20th Century, \$2,000-\$4,000



Art Deco Platinum, Diamond and Emerald Bracelet, \$10,000-\$15,000



Platinum Solitaire Diamond Ring, \$40,000-\$60,000



Augustus Saint-Gaudens (American 1848-1907), Robert Louis Stevenson Bronze Roundel Plaque, Modeled 1887, \$10,000-\$15,000



Platinum and Diamond Brooch, \$5,000-\$7,000



American Silver Four-Piece Tea Set, Probably Philadelphia, Circa 1840, \$2,000-\$3,000



David Kindleberger (American 1834-1921), *Along the Potomac*, 1876, oil on canvas, \$10,000-\$20,000



Meissen Porcelain Allegorical Figural Group of 'America', Late 19th Century, \$1,500-\$2,500

♦**In-Person Exhibition:** Saturday, December 3rd, 10am to Noon;

Monday-Wednesday, December 5th-7th, 10am to 4pm; Thursday, December 8th, 10am to 2pm.

♦**Bid in-person, online, by phone, or by absentee bid.**

♦**To preview the complete catalogue and register to bid visit weschlers.com, invaluable.com or auctionzip.com**

♦**For more information on any lot in the sale, call 202-628-1281 or email info@weschlers.com**

Our next Capital Collections Auction is March 10th. Consignment deadline: January 20th

We are always accepting quality consignments. Contact us at info@weschlers.com to learn more.

Weekly Metro Online Timed Auctions ♦ Quarterly Capital Collections/Gallery Auctions

Weschler's Auctioneers and Appraisers LLC - Since 1890

40 West Gude Drive, Suite 100, Rockville, Maryland 20850

TEL: 202-628-1281 ♦ FAX: 202-628-2366 ♦ www.weschlers.com