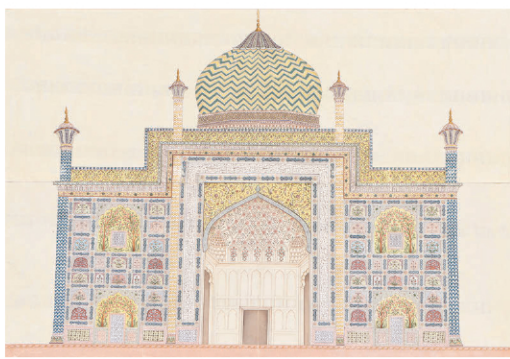


DAY ONE: Ethnographic, Ancient, Tribal & Asian Arts | 562 Lots

Live Showroom Auction: Monday, November 14, 2022, 10AM ET | Public Exhibition: November 11-13, 11am – 4pm



Khmer Carved Sandstone
Male Deity, 12-13th C.



Indian Company School
Architectural Rendering, Early 20th C.



Fine Japanese 2-Panel Folding Screen
With Birds And Maple Leaves, Edo Period



Hasui Kawase
(Japanese, 1883-1957)
Woodblock Print, "Senju Waterfall"



African Gurunsi
Buffalo Mask,
Burkina Faso



West New Britain
Dance Shield, PNG,
72.5" x 13" x 3.5"

DAY TWO: Ethnographic Arts | Textiles | 378 Lots

Live Showroom Auction: Tuesday, November 15, 2022, 10AM ET | Public Exhibition: November 11-13, 11am – 4pm



Chinese Embroidered Silk Dragon Robe
(Chaopao), Qing Dynasty



Yi Man's Three-Piece Jacket,
with Batik, Early 20th C.



White-Centered Hinggi,
Sumba, Indonesia, Early-Mid 20th C.



Iscayo Woman's Shawl Mantle,
Pacajes Region, Mid-19th C.



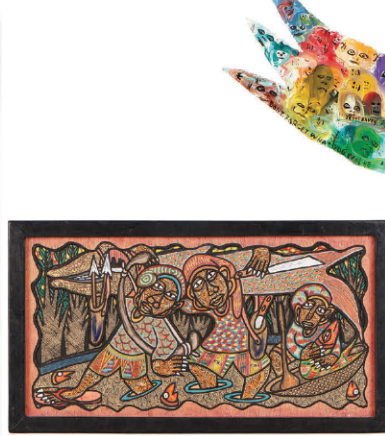
19th C. Central Asian Suzani,
7'2" x 4'11"

FINE | FOLK | OUTSIDER | 514 LOTS

Live Showroom Auction: Monday, November 21, 2022, 10AM ET | Public Exhibition: November 18-19-20, 11am – 4pm



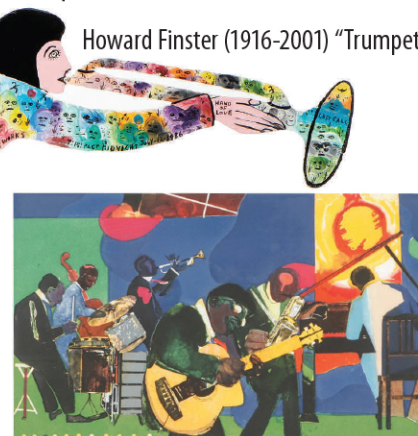
Mose Tolliver
"Jimi Hendrix"



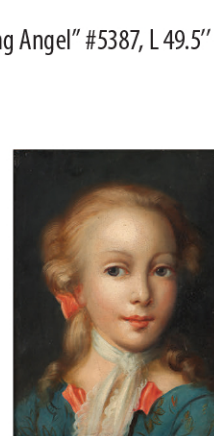
Prince Twins Seven Seven
"The Hunter Meek", 1995



Andrew Turner
"Checkers" 1991



Romare Bearden
"Jamming at the Savoy"



English School (18th C.)
Portrait of a Young Girl



Felipe Jesus Consalvos,
Cigar Band Sculpture



Howard Finster (1916-2001) "Trumpeting Angel" #5387, L 49.5"

ORIENTAL RUGS FROM AMERICAN ESTATES

Live Showroom Auction: Tuesday, December 6, 2022, 10AM ET | Public Exhibition: December 4 - 5, 11am – 4pm



Konya Rug, Central Anatolia,
Mid 19th C., 5'3" x 6'8"



Shahsevan Khorjin Face,
Transcaucasus, 19th C.



Khamseh Rug, Persia,
Ca. 1875, 6'4" x 12'4"



Fine Isfahan Carpet, Signed by
Order of Sadeq Serafian,
Mid 20th C., 8'4" x 12'5"



Fine Tree of Life Kerman
Carpet, Persia, Late 19th C.
12'1" x 20'6"



Lori Pambak Rug, Caucasus,
Ca. 1880, 6'0" x 7'2"

material culture

4700 Wissahickon Avenue, Philadelphia, PA 19144 | 215-438-4700 | materialculture.com | expert@materialculture.com