



Annual Thanksgiving Auction

November 26th & 27th: starting at 11:00 AM
117 Elliot Street, Beverly, MA 01915

This year's auction is dedicated to Mary Westcott in honor of her 90th birthday. Mary has worked as a Senior Appraiser at Kaminski for over 32 years and is well-known throughout the antique industry.

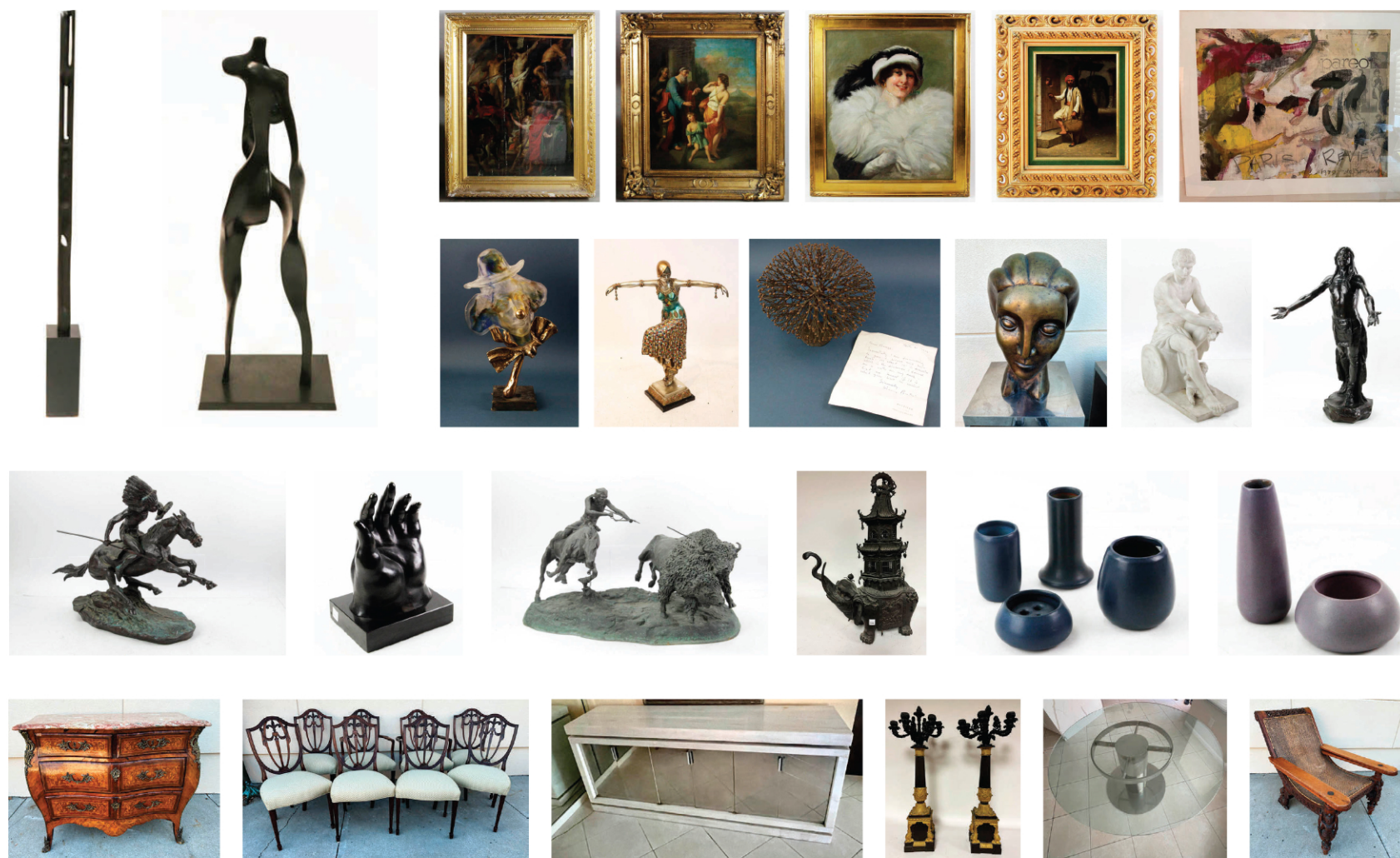
We have been commissioned to sell several great collections:

- The late Nondas Lagonakis of Salem, owner of Bill & Bob's Roast Beef
- Collection of old master paintings and classical marble sculptures
- Mr. Peterson of Del Mar, California's coin and fine art collection
- The late Anthony Athanas wine collection, including scotch and port
- Park Avenue, New York, watches and jewelry collections
- Santa Barbara, California lady's jewelry collection
- Collection of the late George Johnson Montecito of California, mid-century modern furnishings and sculptures
- Jack McGlynn & the Barry family sports memorabilia collection
- Robert Silverman coin and autograph collection
- John Wrublewski autograph collection
- Palm Beach Collection of rare Cuban sculptures by Augustin Cardenas

Preview to be held at Kaminski Auctions' Gallery located at 117 Elliott Street, Beverly MA 01915, from November 21st-23rd (Monday-Wednesday, 9 am-5 pm), November 25th (Friday 9 am-5 pm), and Saturday & Sunday from 8 am. The preview is open while the auction is live.



MA LIC #171   



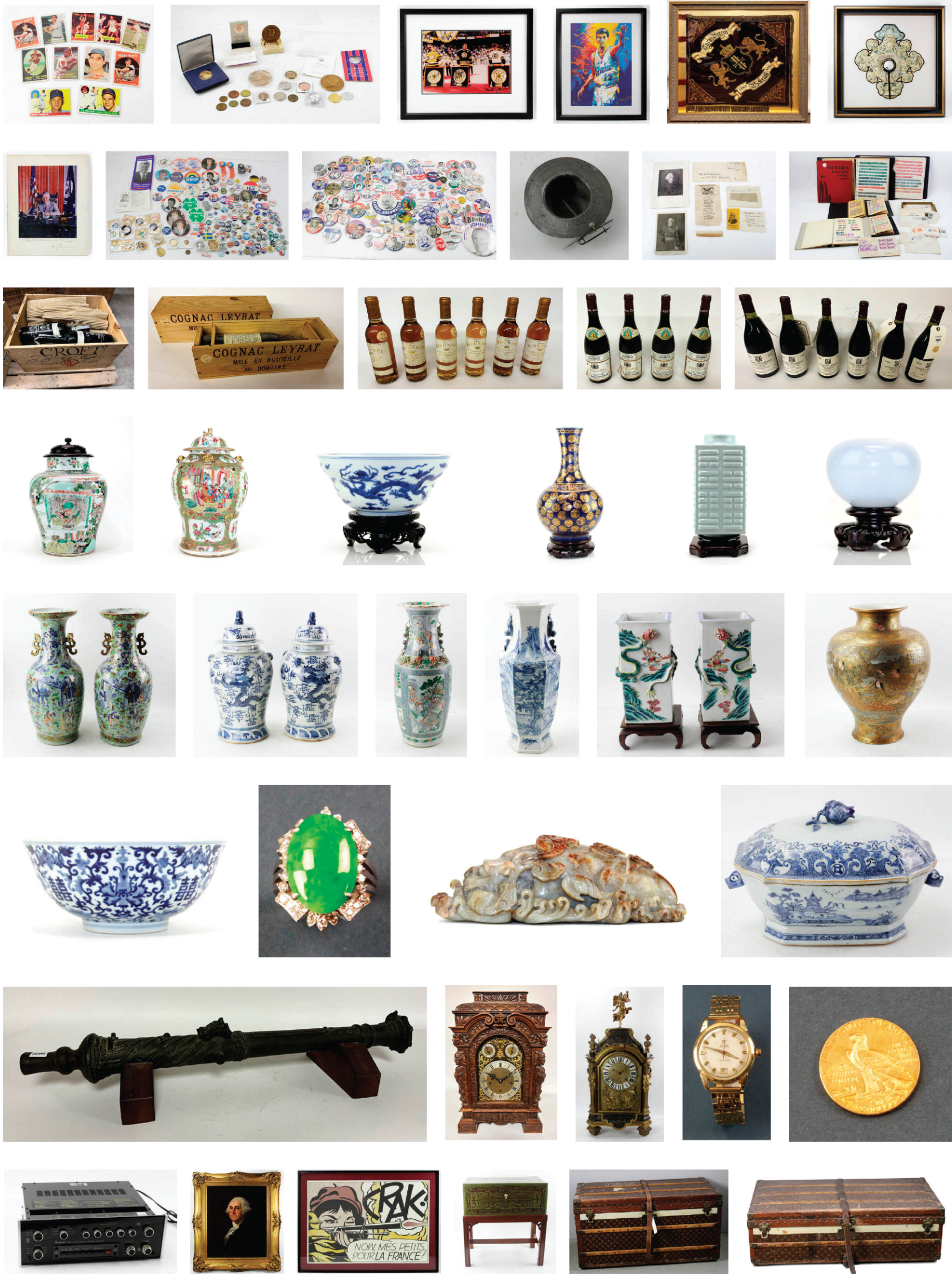
Consignments now invited, contact consignments@kaminskiauctions.com

www.kaminskiauctions.com

Bid online with KaminskiLIVE, sign up today to become a preferred member!

978 927 2223/2228 fax  KAMINSKILIVE®

Beverly, MA • San Diego, Beverly Hills, Palm Springs & Santa Barbara, CA • West Palm Beach, FL




Consignments now invited, contact consignments@kaminskiauctions.com

www.kaminskiauctions.com

Beverly, MA • San Diego, Beverly Hills, Palm Springs & Santa Barbara, CA • West Palm Beach, FL

Bid online with KaminskiLIVE, sign up today to become a preferred member!

978 927 2223/2228 fax  **KAMINSKILIVE®**