

Winter Associates

Auctioneers & Appraisers

LIVE AUCTION

November 7th at 5:30PM

19th C. to Modern Art; Contemporary & Antique Furniture; Coins; Jewelry; Sterling; Vintage Clothing and Textiles; Asian; Native American Baskets & Pottery; Oriental Rugs; etc.

View catalog online as of Oct 28th at www.AuctionsAppraisers.com

Previews:

Friday, Nov. 4th, 12-4 pm

Sunday, Nov. 6th, 2-4 pm

Monday, Nov. 7th, 12-5pm
or by appointment.



From Connecticut homes: modern and contemporary art and furniture including a Sol LeWitt original embossed paper art, Miro litho, Gary Baseman drawings (2), Erdman stone sculptures (2); 20th C. furniture including Chris Pollack for Knoll (4), John Stuart (2), D. R. Dimes (7), Paul Kjaerhilm PK61 glass table; Antique furniture including blanket chests (2), drop-leaf tables (2), tall case clocks (2), game table, etc.; ship model; Traditional paintings by artists Aldro Hibbard, Wakeman Holberton, Gifford Beal, Boris Lovet-Lorski, Peter Rudell, Honora Berg, etc.; American coins including gold, 33 lots; Jewelry including Tiffany, 18k, 14k, diamonds, etc., 18 lots; plus 5 generous lots of costume jewelry; Lithographs, Etchings, Engravings, 33 lots, by artists Raffaelli, Mucha, Barnet, Whistler (2), Felixmueller, Helleu, Youngerman, Schwartz, Appel, Robbe, Soyer, Stobart, etc.; Stanley Mouse poster; Oriental Rugs, 24 lots; Silver including Tiffany, 20 lots; Asian including watercolors, ceramics, cloisonne, etc., 9 lots; 25 lots of Ceramics including Spode "Blue Clipper" china set, Boehm nativity 12pcs, Doulton Lambeth, Meissen, etc.; sailor art; #decoys; walking sticks including two Dartmouth; early oil lamps including miniature; metal ware including 4 lots of early candlesticks including 18th C. English & Continental, 18th C. cooking pots and trivets, fireplace tools, etc.; vintage and antique textiles including quilts, day dresses, early purses, samplers, woolwork, embroidery, fans; Mexican oil retablos (5) and shrines (2); Woven splint baskets including Native American, 7 lots; Acoma Pottery, 2 lots; Wooden boxes, mostly American (23); Edison Phonograph with cylinders (36); early Christmas ornaments, Victorian feather tree; etc.



Wakeman Holberton, oil, 15" h.



Aldro Hibbard, oil, 24" h.



Whistler "Soupe a Trois Sous"



14K



14K, 1.82 ctw.



Tiffany & Co.



1872 Indian Cent



Two Richard Erdman, 27" onyx, 21" rose marble



Mucha, 15" h.



Will Barnet litho, 34" h.



Dior, Lisner, etc.



Sol LeWitt, embossed paper, gift of artist, 15" h. x 36" oa



1 of 3 painted



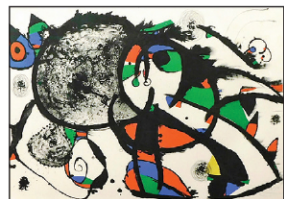
Handel



Paul Kjaerhilm PK61



100+ Souvenir



Miro, pencil signed



J. F. Raffaelli



Tall case, 1 of 2



Pima, 15"



John Stuart



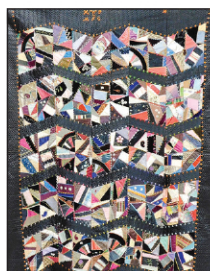
Charles Pollack for Knoll



19th C.



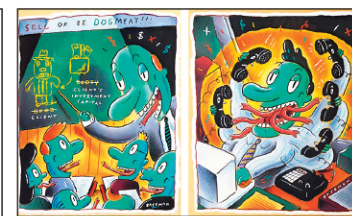
Early embroidery & beading



19th C. silk



English & Chinese



Gary Baseman mixed media



Charles Pollack for Knoll



Boehm 12pc nativity



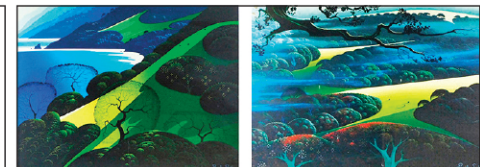
D. R. Dimes



Porcelain, 36" l.



Antique Eagle Kazak 9' x 5'



Eyvind Earle, two serigraphs



19th C. Chest, Textiles; Decoys

TERMS: IN-PERSON AUCTION AUDIENCE
Auction begins at 5:30 PM. In addition to live bidding, Winter Associates will accept absentee and phone bids with a 23% Buyer's Premium and live online bidding will be available on Invaluable.com and Liveauctioneers.com with a 28% Buyer's Premium. A 3% discount is available to buyers with cash and approved checks. After the auction, pickup will be by appointment only, please email or call ahead and we will do our best to accommodate you.
LOCATION: 20 mins. west of Hartford, CT.
Approx. 2 hours from NYC or Boston.

Winter Associates, Inc. • 21 Cooke Street, Plainville, CT 06062 • 860-793-0288