

CROCKER FARM

SUMMER 2022 STONEWARE & REDWARE AUCTION
BIDDING BY INTERNET, PHONE & MAIL • JULY 22ND TO AUGUST 5TH

CROCKER FARM
15900 YORK RD.
SPARKS, MD 21152

PHONE: (410) 472-2016
WEB: WWW.CROCKERFARM.COM
E-MAIL: INFO@CROCKERFARM.COM



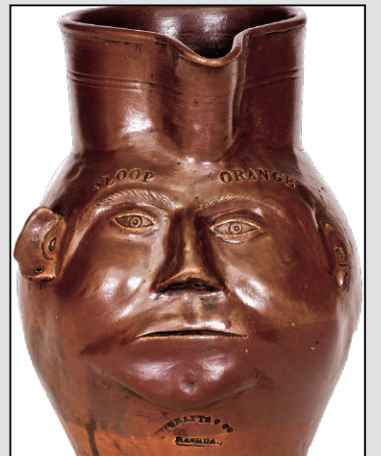
ANNA POTTERY MASTERWORK.

IMPORTANT COBALT-DECORATED STONEWARE GROVER CLEVELAND PITCHER, SIGNED AND DATED "ANNA POTTERY / JANUARY 15, 1885," WALLACE AND CORNWALL KIRKPATRICK, ANNA, IL, 1885. ONE OF THE MOST ELABORATE CREATIONS BY THESE CELEBRATED CERAMICISTS. H 11 3/4".



ICONIC AMERICAN FOLK SCULPTURE.

IMPORTANT LARGE-SIZED COBALT-DECORATED STONEWARE FIGURE OF A RECLINING STAG, OH OR WESTERN PA ORIGIN, CIRCA 1875. LITERATURE: ILLUSTRATED IN GREER, *AMERICAN STONEWARES*, P. 252. L 14" ; H 11 3/8".



AFRICAN-AMERICAN MASTERWORK.

IMPORTANT ALKALINE-GLAZED STONEWARE PRESENTATION PITCHER WITH PROFUSE STAMPED AND INCISED DECORATION, INSCRIBED "PRESENT FOR PLEASANT GROVE / MADE BY J.M. BUSSEL / AUGUST 9TH 1872," WASHINGTON COUNTY, GA, 1872. MADE BY MIXED RACE POTTER, JAMES MADISON BUSSEL, FOR A LOCAL BAPTIST CHURCH, THIS WORK IS AMONG THE MOST HEAVILY-DECORATED EXAMPLES OF SOUTHERN ALKALINE-GLAZED STONEWARE KNOWN. H 15".



THE SQUIRREL. OUTSTANDING FIVE-GALLON STONEWARE JUG WITH LARGE COBALT FEEDING SQUIRREL DECORATION, NEW YORK STATE ORIGIN, CIRCA 1875. THIS JUG'S RENDERING OF A SQUIRREL IS ONE OF THE LARGEST FREEHAND FIGURAL DESIGNS KNOWN IN 19TH CENTURY AMERICAN STONEWARE. H 18 1/4".

