

# THE 65<sup>TH</sup> ANNUAL New Hampshire Antiques Show

Melissa Alden  
Kate A. Alex & Co.  
Baker & Co. Antiques  
Pam & Martha Boynton  
Brock & Co.  
Hollis Brodrick  
John Chaski Antiques  
Cherry Gallery  
Cottage & Camp  
Dennis & Dad Antiques  
DeWolfe and Wood  
Early American Antiques  
Christopher & Bernadette Evans  
Antiques  
Brian J. Ferguson  
Robert T. Foley Antiques  
Samuel W. Forsythe Antiques  
Tucker Frey Antiques  
Pat & Rich Garthoeffner  
Scott Bassoff and Sandy Jacobs  
Bob Jessen & Jim Hohnwald  
Jewett-Berdan Antiques  
Kelly Kinzle  
Nathan Liverant and Son, LLC  
Thomas R. Longacre Antiques  
Sheridan Loyd Antiques  
McClard-Segotta Antiques  
Ian McKelvey Antiques  
Judith & James Milne/  
At Home Antiques  
J K Nevin Antiques



Jeff & Holly Noordsy Art and Antiques  
The Norwoods' Spirit of America  
Old as Adam  
Olde Hope Antiques, Inc.  
Hercules Pappachristos  
Pewter & Wood Antiques  
Ken & Robin Pike  
Sharon Platt American Antiques  
Nancy & Gene Pratt  
Thomas M. Rawson Antiques  
Resser-Thorner Antiques  
Jeffrey Roelof  
John H. Rogers Antiques  
Peter Sawyer Antiques  
David A. Schorsch - Eileen M. Smiles  
American Antiques  
Stephen Score, Inc.  
Mary & Joshua Steenburgh  
Jef & Terri Steingrebe  
Stephen Douglas at Walpole  
Steven F. Still Antiques  
Paul D. Sullivan Antiques  
David Thompson Antiques & Art  
Jeffrey Tillou Antiques  
Jonathan Trace  
Village Braider, Inc.  
Michael Whittemore Antiques  
& Folk Art  
Withington & Co.  
Douglas Wyant Antiques, LLC

August 11 - 13, 2022

THURSDAY & FRIDAY: 10AM - 7PM

SATURDAY: 10AM - 4PM

DoubleTree by Hilton  
Manchester, NH • 603.625.1000

[nhada.org](http://nhada.org)

# THE 65TH ANNUAL New Hampshire Antiques Show Is Back August 11-13

It seems like time has flown by and it is time to welcome everyone back to New Hampshire and to the New Hampshire Antiques Show. We are excited to be back again for another exciting presentation of the finest antiques our exhibitors have to offer. As always, our exhibitors have been squirreling the best of what they have found away to present to you, our attendees, at our annual show.

These past few years have been tough ones for dealers and collectors alike, but there seems to be light at the end of the tunnel and we are hoping to extend a welcome to old friends we have missed and to new friends who will be attending for the first time. We New Hampshire folk are of tough Yankee stock and are ready to jump back into the swing of things.

This year marks our 65th Anniversary. We have come a long way. Sixty-five years ago, a few dealers got together and had a show at the New Hampshire Highway Hotel in Concord. Little did those exhibitors dream that they had created a show that was destined to become one of the best in New England. One of those first exhibitors, Howard Odell, is still with us. He did stop exhibiting a few



years ago, but he is still held in our highest esteem as the “Daddy of the New Hampshire Antiques Dealers Show.” Because the success of our show, other shows have joined us, and New Hampshire Antiques Week is a destination for collectors and dealers from all over the country and beyond.

We are going to be missing a few exhibitors this year. We are sad to see them go, but we are also excited to have replacements that will be bringing

what all our attendees have been expecting to see. One of the missing faces will be mine. After 40 odd years, I need a breather, but like both Sarah Bernhardt and Cher, I’m still hoping I have a few farewell tours left. Next year when you round the corner and see me in a booth, you can whisper to the person next to you, “Is that fossil still around?”

I seem to mention this each year, but want to keep reminding everyone that the New Hampshire Antiques Dealers Association is not only comprised of dealers exhibiting at our show, but many others who will be at their shops with their welcome banners unfurled to greet you. Some will have extended hours for your shopping pleasure. Take a break from all the hustle and bustle and head out in any direction and you’ll find shops stocked with lots of antiques that need new homes.

Welcome to New Hampshire, our show, our shops, and we hope you enjoy it all. We will be looking forward to welcoming you for another 65 years.

**Thomas M. Thompson**  
President  
New Hampshire Antiques Dealers Association

## NHADA DEALER DIRECTORY

Melissa Alden, Portsmouth, NH	NH-46	Jeff & Holly Noordsy Art and Antiques, Cornwall, VT	NH-23,41
Kate A. Alex & Co., Warner, NH	NH-37	The Norwoods’ Spirit of America, Timonium, MD	NH-20
Baker & Co. Antiques, Lake George, NY	NH-58	Old as Adam, Providence, RI	NH-12
Pam & Martha Boynton, Townsend, MA	NH-45	Olde Hope Antiques, Inc., New York, NY	NH-28
Brock & Co., Concord, MA	NH-19	Hercules Pappachristos, Derry, NH	NH-35
Hollis Brodrick, Portsmouth, NH	NH-15	Pewter & Wood Antiques, Enfield, NH	NH-48
John Chaski Antiques, Camden, DE	NH-56	Ken & Robin Pike, Nashua, NH	NH-59
Cherry Gallery, Damariscotta, ME	NH-49	Sharon Platt American Antiques, New Castle, NH	NH-9
Cottage & Camp, Millerton, NY	NH-55	Nancy & Gene Pratt, Victor, NY	NH-39
Dennis & Dad Antiques, Fitzwilliam, NH	NH-44	Thomas M. Rawson Antiques, Cedar Rapids, IA	NH-34
DeWolfe and Wood, Alfred, ME	NH-25	Resser-Thorner Antiques, Manchester, NH	NH-29
Early American Antiques, Canfield, OH	NH-22	Jeffrey Roelof, Kalamazoo, MI	NH-49
Christopher & Bernadette Evans Antiques, Waynesboro, VA	NH-21	John H. Rogers Antiques, New London, NH	NH-36
Brian J. Ferguson, Swansea, MA	NH-18	Peter Sawyer Antiques, Exeter, NH	NH-5
Robert T. Foley Antiques, Gray, ME	NH-26	David A. Schorsch - Eileen M. Smiles American Antiques, Woodbury, CT	NH-17
Samuel W. Forsythe Antiques, Columbus, OH	NH-54	Mary & Joshua Steenburgh, Pike, NH	NH-47
Tucker Frey Antiques, Woodbury, CT	NH-50	Jef & Terri Steingrebe, New London, NH	NH-16
Pat & Rich Garthoeffner, Lititz, PA	NH-53	Stephen Douglas at Walpole, Walpole, NH	NH-3
Scott Bassoff and Sandy Jacobs, Swampscott, MA	NH-4	Steven F. Still Antiques, Manheim, PA	NH-13
Bob Jessen & Jim Hohnwald, Fitzwilliam, NH	NH-40	Paul D. Sullivan Antiques, Manchester, NH	NH-43
Jewett-Berdan Antiques, Newcastle, ME	NH-30,31	David Thompson Antiques & Art, So. Dennis, MA	NH-32
Kelly Kinzle, New Oxford, PA	NH-57	Jeffrey Tillou Antiques, Litchfield, CT	NH-8
Nathan Liverant and Son, LLC, Colchester, CT	NH-24	Jonathan Trace, Portsmouth, NH	NH-6
Thomas R. Longacre Antiques, Marlborough, NH	NH-10	Village Braider, Inc., Plymouth, MA	NH-7
Sheridan Loyd Antiques, St. Joseph, MO	NH-51	Michael Whittemore Antiques & Folk Art, Punta Gorda, FL	NH-11
McClard-Segotta Antiques, Weare, NH	NH-33	Withington & Co., York, ME	NH-14
Ian McKelvey Antiques, So Windham, CT	NH-27	Douglas Wyant Antiques, LLC, Cassopolis, MI	NH-38
Judith & James Milne/At Home Antiques, Kingston, NY	NH-42		
J K Nevin Antiques, Elverson, PA	NH-37		



Walpole, New Hampshire  
603-903-5023

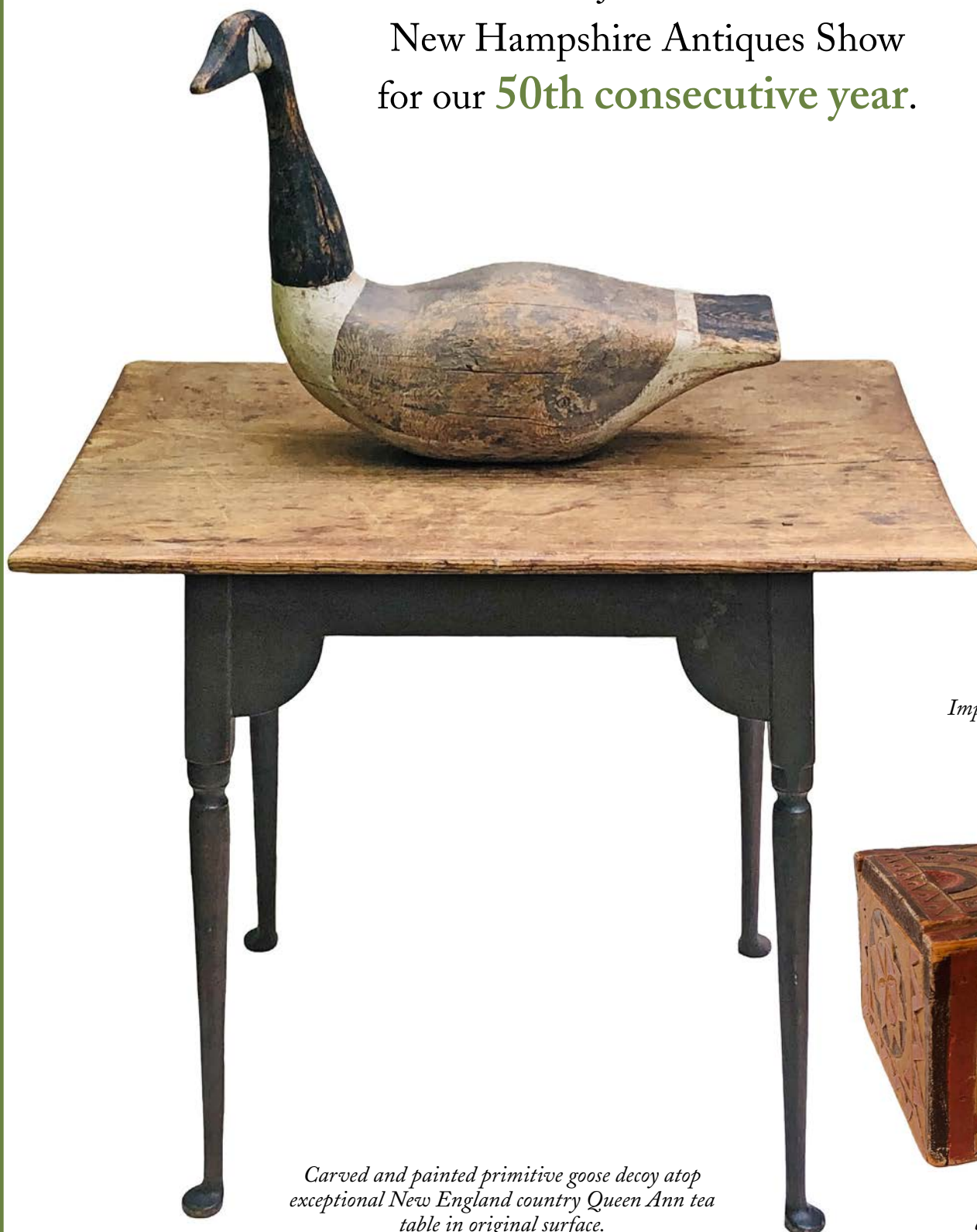


Rockingham, Vermont  
802-463-4296

*Carved and painted angel, European 19th century.*

# STEPHEN / DOUGLAS ANTIQUES

Please join us at the  
New Hampshire Antiques Show  
for our **50th consecutive year.**



*Carved and painted primitive goose decoy atop  
exceptional New England country Queen Ann tea  
table in original surface.*



*Important pair of American watercolor portraits  
each a parent and child, original frames.*



*Important American carved and paint  
decorated slide top box, early 19th century.*





**JEFF & HOLLY NOORDSY ANTIQUES,** Cornwall, Vt. — House of Derr Berks County, Penn., paint-decorated bentwood box, circa 1820.



**THE NORWOODS' SPIRIT OF AMERICA,** Timonium, Md. — Nineteenth Century carved dog on book, 6 inches wide by 4 inches deep by 2½ inches high.



**KELLY KINZLE ANTIQUES,** New Oxford, Penn. — Indian hunter zinc cigar store figure from Muther & Son, Tobacconist, Santa Rosa, Calif., by William DeMuth of New York, circa 1875. Seldom can a tobacco figure be attributed to its original store. Muther advertised his location as "Sign of the Big Indian." It is in outstanding original condition.



**JEWETT-BERDAN ANTIQUES,** Newcastle, Maine — A large vinegar-decorated treen cake holder with no cracks, dry surface.

**DAVID THOMPSON ANTIQUES & ART,** South Dennis, Mass. — Folk art carved and exuberantly painted bird on branch mounted on original turned half-round polychromed maple base, to affix to wall. Probably Pennsylvania origin, late 19th or early 20th c. Crusty, old surface. Tiny inserted black eyes. Overall size: 7 by 5½ inches.

# Scott Bassoff • Sandy Jacobs ANTIQUES

Swampscott, MA 01907 | 603.801.5532 mobile

[www.sandyjacobsantiques.com](http://www.sandyjacobsantiques.com) | [sandyjnh1@gmail.com](mailto:sandyjnh1@gmail.com) | [www.scottbassoffsandyjacobsantiques.com](http://www.scottbassoffsandyjacobsantiques.com)



19th C revolving wooden globe on iron stand. 26 1/2" tall



Folky sheet iron running deer weather vane. 36" wide by 37 1/2" tall

Exceptional Mid 18th C Spanish/Portuguese imperial topaz brooch



19th C French 18K Georgian earrings with cherubs surrounded by blue enamel and pearls







# PETER SAWYER ANTIQUES

17 COURT STREET  
EXETER, NH 03833  
603 772 5279



**RARE REVOLUTIONARY WAR PERIOD  
CHERRY TALL CASE CLOCK BY NATHANIEL MULLIKEN  
(1722-1777) OF LEXINGTON, MASSACHUSETTS**

FEATURING AN ENGRAVED BRASS DIAL INSCRIBED BY THE MAKER  
AND EIGHT DAY MOVEMENT WITH HOURLY STRIKE.  
FINE RUNNING CONDITION. HEIGHT 90" INCLUDING FINIAL

*We specialize in fine new england antiques from the late 18th and  
early 19th century. Generally, our shop is open monday-friday  
and visitors are invited to stop by anytime.*

*To insure we are open, a call ahead is encouraged.  
We are always eager to buy fine new england objects.*

*Peter Sawyer/Scott Bassett  
Petersawyer@comcast.net  
PeterSawyerAntiques.com*





**STEPHEN-DOUGLAS ANTIQUES, Rockingham, Vt.** — Large yellow painted wood “Donut” box with original stencil decoration. Pennsylvania or Ohio, mid-Nineteenth Century.

**OLDE HOPE ANTIQUES, New Hope, Penn.** — Boldly decorated small blanket chest in pine retaining the original vinegar-grained paint, till and lock, measuring 22 inches tall, 30 inches long and 17¼ inches deep, New England, circa 1820.



**JEFFREY TILLOU ANTIQUES, Litchfield, Conn.** — Fanback Windsor chair, mixed woods, probably Connecticut or Rhode Island, circa 1785-95. Excellent condition, Nineteenth Century black painted surface. The chair has a shaped crest with carved ears above spindles flanked by turned stiles and having a wonderfully shaped saddle-seat supported by ring-turned legs joined by turned stretchers. Measurements: 39 inches high (crest), 21½ inches wide (crest), 17½ inches (legs), 18¼ inches high (seat).



**RESSER-THORNER ANTIQUES, Manchester, N.H.** — Historically important locket: “Nelson’s Victory Aug 1 1798” watercolor on paper with silhouette of an unknown gentleman on verso. Commemorates the Battle of Nile, one of Nelson’s greatest victories, 2¼ by 1¾ inches (sight).



**DENNIS & DAD ANTIQUES, Fitzwilliam, N.H.** — Molded English creamware teapot and creamer with purple, green, grey and brown fruit and vines decoration, circa 1850-75. The teapot and creamer sold separately; teapot is 4-3/8 inches tall and the creamer is 4½ inches tall.



# Jonathan Trace

BY APPOINTMENT

POST OFFICE BOX 420 • PORTSMOUTH, NH 03802

(603)431-1197

JTRACEANTIQUES@MAC.COM

We are always interested in purchasing fine American silver and furniture-single items or collections.



## STANDING CUP

Liberty Browne & William Seal  
Philadelphia  
Circa 1810-1813







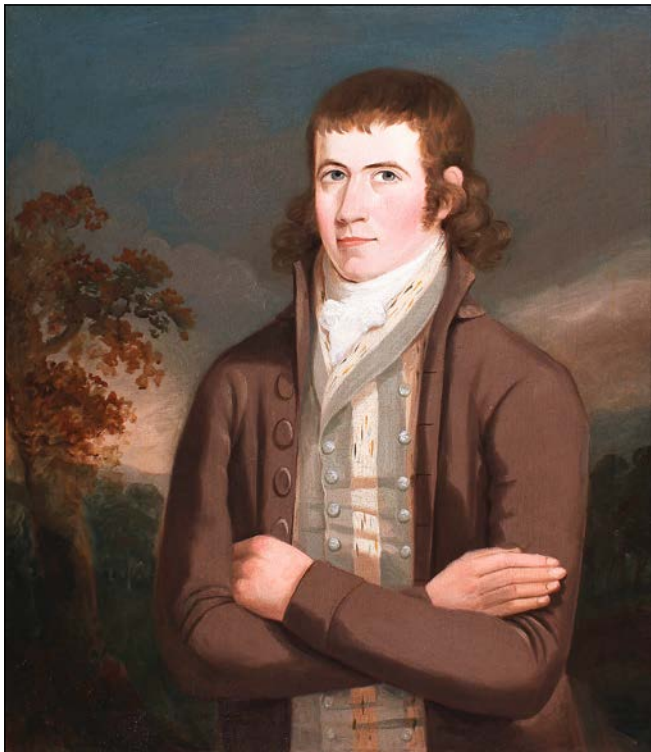
Grenfell Labrador Industries hooked rug,  
36 1/2" by 38 1/4", 3 Mallard ducks in flight  
over a mountain lake, perfect condition.

## Village Braider Inc.

Plymouth, MA • 508-746-9625







STEVEN STILL ANTIQUES, Manheim, Penn. — Late Nineteenth Century carved wooden Odd Fellows plaque with skull and crossbones from the Mineral Ridge Lodge, Ohio.

[nhada.org](http://nhada.org)

McCLARD SEGOTTA ANTIQUES, Weare, N.H. — Handsome Eighteenth Century gentleman in an exterior setting in a period frame that measures 33 by 29½ inches, American or English School, circa 1790.



JEWETT-BERDAN ANTIQUES, Newcastle, Maine — Carved and painted wooden train model measuring 25 inches long.

VILLAGE BRAIDER, Plymouth, Mass. — Large hat box, view of Middletown, Conn., Wesleyan University Campus Palestine Garden.



## JEFFREY TILLOU ANTIQUES



### LARGE ARROW BANNER WEATHERVANE

American, probably New England or New York, ca. 1875-1890.

Molded and sheet copper, copper tubing, zinc arrow head.

Excellent condition with original yellow sizing and gilt surface, minor seam separation.

Provenance: From a Private New York Collection.

In a wonderful imposing size, this banner weathervane exhibits great form and design.

The quality of the work is further complimented with the original gilt surface.

41"h, 60"w (49 ½"h on stand)



# Sharon Platt

## American Antiques

Period Decorative Arts for the Early American Home



Rare Late 19th c. Cornhusk Doll Of Intricate Design



Rare selection of 18th c. Everyday Objects Used in Early America; Exceptional Pair of Spermaceti Molded Candles; 18th c. Wrought Iron Striker, Provenance: Howard Roth Collection



American Wrought Iron Fish Broiler Dated 1821  
Provenance: Howard Roth Collection



Booth No. 36

View [www.sharonplatt.com](http://www.sharonplatt.com) for Ad Details

sharon@sharonplatt.com • 603-430-7556 • PO Box 723, New Castle, NH 03854





McCLARD SEGOTTA ANTIQUES, Weare, N.H. — Pair of American folk silhouettes by deaf-mute artist James Holsey Whitcomb of Lucinda and Charles Burroughs of New York.



OLDE HOPE ANTIQUES, New Hope, Penn. — Hooked rug with two cats, New England, circa 1890, rag cotton and wool on burlap depicting two cats within an abstract ground; height 23 3/4 inches, length 44 inches; mounted for hanging.

STEPHEN-DOUGLAS ANTIQUES, Rockingham, Vt. — Stone watch hutch, American, dated 1852.



RESSER-THORNER ANTIQUES, Manchester, N.H. — Liverpool pearlware Anti-Slavery creamer, circa 1820s.

## The 65th Annual New Hampshire Antiques Show

BAKER & CO. ANTIQUES, Delmar, N.Y. — A group of sock cats.



# THOMAS R. LONGACRE ANTIQUES ● FOLKART

Beautifully designed  
double seahorse cast  
iron weathervane.  
Original painted  
surface.  
Circa 1900-30.



Our 45th year  
exhibiting at the  
NHADA show  
and our  
50th anniversary in  
the antique business.

[www.thomasrlongacre.com](http://www.thomasrlongacre.com)

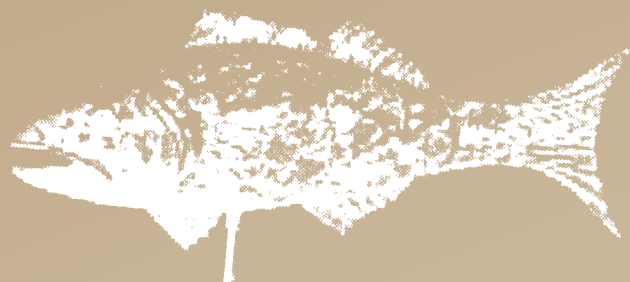
[tom@thomasrlongacre.com](mailto:tom@thomasrlongacre.com)



Beautifully designed double seahorse  
cast iron weathervane. Circa 1900-30.  
22 1/2" high by 16" wide.







# Michael Whittemore

## Antiques & Folk Art

980 Coronado Drive, Punta Gorda, Florida 33950  
860-428-1135



### Nautical Themed Hooked Rug

Late 19th Century 36"x58"  
Professionally Mounted

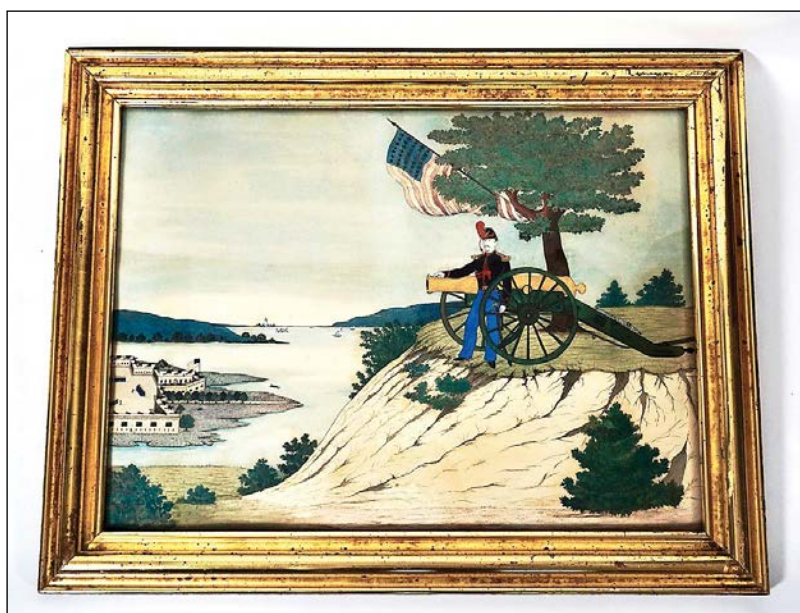




JEF & TERRI STEINGREBE, New London, N.H. — A chinoiserie Queen Anne tea table.



McCLARD SEGOTTA ANTIQUES, Weare, N.H. — American hollow-cut silhouette with fancy Scherenschnitte border in period tiger maple frame measuring 8 by 6½ inches, likely Pennsylvania, circa 1820.



STEVEN STILL ANTIQUES, Manheim, Penn. — Mixed media work signed C. Joeckel and dated 1866 of a soldier by a cannon overlooking a fortress.



IAN McKELVEY ANTIQUES, South Windham, Conn. — One gallon stoneware jug.

## The 65th Annual New Hampshire Antiques Show

# OLD AS ADAM. *Adam Irish ~ Antiques & Americana*



Italian restaurant sign, c. 1920 — six feet long — Portsmouth, NH history

## VISIT THE STORE

at 125 Benefit Street in Providence, RI

Open weekends or by app't ~ Tel. 603-661-9373 ~ adam@oldasadam.com

"Bath 25 Cents"  
early electric  
sign, c. 1910



Booth  
No 10



## SHOP ONLINE

www.oldasadam.com

@oldasadam





# OUR TRUNK IS PACKED FOR THE SHOW



Steven F. Still

*Antiques*

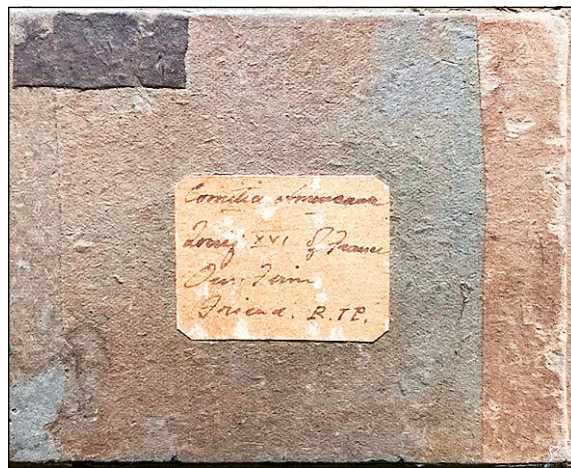
1717 South Colebrook Road • Manheim, PA 17545

Phone: (717) 459-3595 • Cell: (717) 682-0410

[www.stevenfstillantiques.com](http://www.stevenfstillantiques.com)







**ROBERT FOLEY ANTIQUES, Gray, Maine** — Early Eighteenth Century Comitia Americana King Louis the XVI colored wax miniature portrait in the original unsealed frame and label intact. The overall size is 4½ by 5½ inches.



**KELLY KINZLE ANTIQUES, New Oxford, Penn.** — Boldly carved and gilded three-dimensional eagle in profile with great detailing and fierce expression. In a mellow, original surface, white pine, circa 1820, height: 27 inches.



**JEFF & HOLLY NOORDSY ANTIQUES, Cornwall, Vt.** — Nineteenth Century stoneware pot with stylized blue floral.



**HOLLIS BRODRICK, Portsmouth, N.H.** — A selection of early decorative arts and artifacts, circa 1640 to 1820.

**August 11 - 13**  
**[nhada.org](http://nhada.org)**



## Withington & Company

2 Old County Road, Cape Neddick, Maine 03902  
Instagram: @withingtonantiques Tel: 603.498.4778

*We will soon be welcoming customers by appointment to our new home and gardens.*





## Hollis E. Brodrick

Arts & Artifacts of Early New England



Part of a rare group of 30, 18th C "SEA CREATURE" Delft tiles. Tiles of this same exact group exist in the Warner House, in Portsmouth, NH- built in 1716



Rare satirical print issued in April of 1774 "The able Doctor, or America Swallowing the Bitter Draught". Among other things, it depicts Lord North force feeding TEA to the reclined figure which symbolizes "America". An English tax on all tea sent to the American colonies precipitated the Boston Tea Party in December of 1773, and then this print- which was copied by Paul Revere a couple months later.



A 17th C joined oak and pine chest in fine condition, with original lid and original oak cleat pin hinges (lacks interior till only-which is common) initialed "RB" at top center of lower front rail. Marshfield, Massachusetts, Ca 1660-1690

Fine pair of Queen Anne side chairs from The Piscataqua region around Portsmouth, NH Ca 1735-1760. The turned elements of the front legs, the dramatic three toed Spanish feet, and the ogee molded side stretchers and stay rail- share common elements with the famous group of oval top, splayed leg tea tables which are undoubtedly from the same shop. Ex Israel Sack



Open by Appointment • 171 Washington Street, Portsmouth, NH

Mailing Address: PO Box 30 | Portsmouth, NH 03802 | 603-828-6158  
email: hollisantiques@gmail.com



All items subject to prior sale





**STEVEN STILL ANTIQUES, Manheim, Penn.** — Cast brass and steel salesman's sample horse-drawn haycutter sickle made by George Gibbs from Canton, Ohio.



**STEPHEN-DOUGLAS ANTIQUES, Rockingham, Vt.** — American sheet iron pointing hand weathervane, with remnants of original painted surface.



nhada.org



**JEWETT-BERDAN ANTIQUES, Newcastle, Maine** — Miniature sailor-made sewing box with heart, diamond and circle motifs, mid-Nineteenth Century.



**DAVID THOMPSON ANTIQUES & ART, South Dennis, Mass.** — Pair of hollow cut silhouettes attributed to Anson Newell, Ellington, Conn., with his typical inked details, early 1849. Sitters, identified in period ink, Louisa Tilden Brigham and her son Don Ferdinand Brigham 2nd "about 10 years old." Original red wash pine frames known to be used by Newell. The boy attended Amherst College, married Harriet Storrs and became a merchant. Each: 5-1/8 by 4 inches.



**JUDITH & JAMES MILNE/AT HOME ANTIQUES, Kingston, N.Y.** — Rare mint condition leather rhino.



**FLYING GOOSE DECOY**  
CARVED WOOD AND METAL  
ORIGINAL PAINT  
EARLY 20TH CENTURY

**LARGE 3 MASTED SCHOONER**  
WEATHERVANE CARVED WOOD METAL  
INTRICATE RIGGING IS WIRE  
ORIGINAL PAINT ABOUT  
47 INCHES LONG

# Jeff & Terri Steingrebe

New London, NH 03257

603-491-1767

jeffrey lance53@gmail.com

www.Jeffsteingrebe.com





DAVID A. SCHORSCH  
EILEEN M. SMILES

*American Antiques*

358 Main Street South, Woodbury, CT 06798 • 203.982.7574  
contact@schorsch-smiles.com • www.schorsch-smiles.com  
Antiquarian Equities, Inc.



Schoolgirl watercolor with gold foil appliqué, probably Connecticut, circa 1830, 11 1/2 x 15 inches, in the original gilt frame, privately owned since 1991 when acquired from the Daphne Farago collection, exhibited at the Rhode Island School of Design Museum in 1985, and illustrated in the catalog "Americana from the Daphne Farago Collection," p. 84.





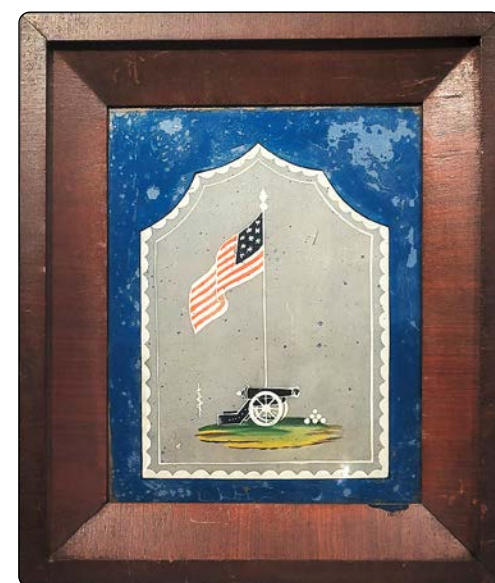
**CHRISTOPHER AND BERNADETTE EVANS ANTIQUES**, Waynesboro, Va. — Late Nineteenth Century double-sided gameboard, great surface and square nail applied molding.



**STEPHEN-DOUGLAS ANTIQUES**, Rockingham, Vt. — Important early hooked and sewn hearth rug with American eagle, circa 1840-50.



**THE NORWOODS' SPIRIT OF AMERICA**, Timonium, Md. — Unique and very detailed wall mirror, 28 inches high by 14 inches wide by 6 inches deep.



**PETER SAWYER ANTIQUES**, Exeter, N.H. — Cannon with American flag, reverse painted on glass in its original frame.

**VILLAGE BRAIDER**, Plymouth, Mass. — Nineteenth Century pastel of Mount Hood, 6½ by 9 inches (image size), on verso "Mount Hood as seen from the Columbia River," signed H.T. Gavit.



**BRIAN J. FERGUSON  
ANTIQUES**

1 Main Street  
Swansea, MA 02777  
508-674-9186

bfergusonswansea@gmail.com



# LOUIS KRONBERG

(1872–1965)



*Two Dancers, Paris Opera*, n.d.

Oil on board, 6 $\frac{3}{8}$  x 10 $\frac{1}{8}$  inches

Initialed at lower right along with Star of David: L☆K

Titled on handwritten label verso

Original "Royal Art Company" frame

**BROCK & CO**  
FINE ART

P.O. Box 648, Concord, Massachusetts 01742 (617) 510-7748 [inquiries@brockandco.com](mailto:inquiries@brockandco.com)

[www.brockandco.com](http://www.brockandco.com)







VILLAGE BRAIDER, Plymouth, Mass. — Sailor's double valentine, each 9 by 9 inches, "Think of Me."



JEWETT-BERDAN ANTIQUES, Newcastle, Maine — An exceptional theorem in abstract style and polka-dot decorated basket, vibrant colors on velvet, New England, circa 1840.



IAN McKELVEY ANTIQUES, South Windham, Conn. — Eighteenth Century Pennsylvania walnut and pine spice chest.



ROBERT FOLEY ANTIQUES, Gray, Maine — Early cast iron plaque of Lafayette, measuring 12½ by 8½ inches.



JEFF & HOLLY NOORDSY ANTIQUES, Cornwall, Vt. — New England wooden bucket with original yellow paint, circa 1840.

[nhada.org](http://nhada.org)

THE NORWOODS' SPIRIT OF AMERICA  
CHOICE AMERICANA OF THE 18<sup>TH</sup> AND 19<sup>TH</sup> CENTURIES

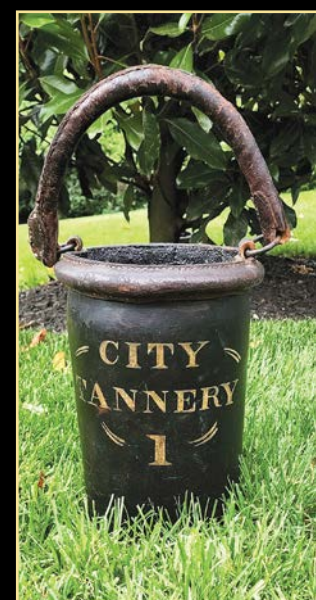
# Everyone Is Coming To The Show



A Delightful Pair of Paper Mache Penguins,  
13"h x 8"w x 6"d



Mid 19th Century Charming Young  
Lady OC, 15 ½"h x 13 ½"w



19th Century Fire  
Bucket, 14"h x 9"d

# Time To Pack Your Bags and Go!

DOUG AND BEV NORWOOD  
410.252.2012 [spiritofamerica@comcast.net](mailto:spiritofamerica@comcast.net)

Portraits Sculpture Theatrics Trade Signs Watercolors

Folk Art Fraktur Hooked Rugs Needlework Painted Smalls



# Christopher and Bernadette Evans Antiques

## Folk Art and Country Americana



**Booth 54; Downstairs, Center Aisle**

**[www.candbevansantiques.com](http://www.candbevansantiques.com)**

**[cevans62@yahoo.com](mailto:cevans62@yahoo.com)**

**(240)-818-7810**





BOB JESSEN/JIM HOHNWALD, Fitzwilliam, N.H. — Early Nineteenth Century schoolgirl watercolor by Almatia Mary Ladd of Belfast, Maine, circa 1830, born 1809-died 1884.



JEWETT-BERDAN ANTIQUES, Newcastle, Maine — Pasteboard band box done in an early paisley fabric, all original, circa 1835.

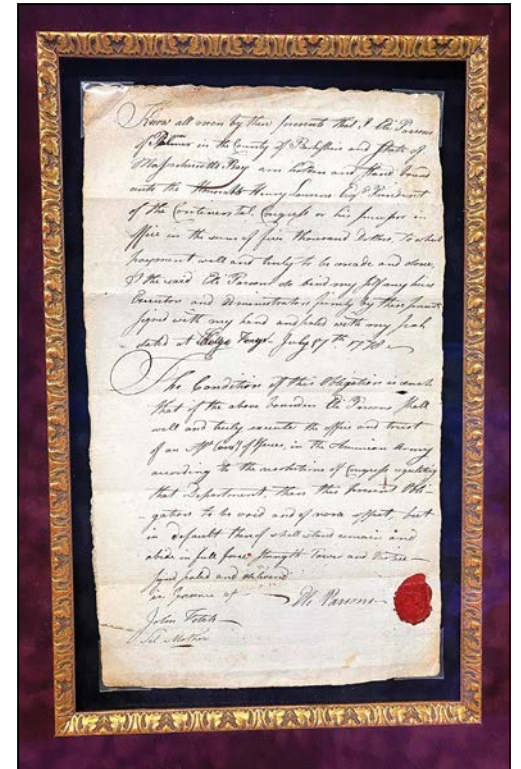
[nhada.org](http://nhada.org)



STEPHEN-DOUGLAS ANTIQUES, Rockingham, Vt. — Wonderful early American Queen Anne baby chairs.



STEVEN STILL ANTIQUES, Manheim, Penn. — Rare make-do burl candleholder with a wrought iron finger loop from early Nineteenth Century.



RESSER-THORNER ANTIQUES, Manchester, N.H. — July 17, 1778 Valley Forge commission (though the location appears to have been altered to Kings Bridge) appointing a commissary of the Continental Army. Witnessed by John Fitch, gunsmith and operator of the first American steamboat, 13 1/2 by 8 1/4 inches.

# EARLY AMERICAN ANTIQUES

STEVEN SHERHAG CANFIELD, OHIO BOOTH #52

## TRADE SIGN & PENMANSHIP

DAVID DANNER CANAL FULTON, OH  
CARVER & CALLIGRAPHER

THIRD-QUARTER 19TH CENTURY  
THE TRADE SIGN IS ACCOMPANIED BY A  
PENMANSHIP BY DANNER. THE HAND AND PEN  
ARE CARVED AND PAINTED. THE SIGN HAS ITS  
ORIGINAL SURFACE AND IS IN UNTOUCHED  
CONDITION. THE PENMANSHIP DATED 1866

FEATURES A YOUNG GIRL  
HOLDING A KITTEN WITH A  
SPREAD-WING EAGLE ABOVE  
A PATRIOTIC WREATH.  
HAND-COLORED AND  
DRAWN BY DANNER.  
THE SIGN MEASURES  
18 H BY 14 1/2 W  
THE PENMANSHIP MEASURES  
17 1/2 H BY 14 W



OUR BOOTH WILL FEATURE FRESH TO MARKET FOLK ART, AMERICANA, AND TRADE SIGNS

STEVEN SHERHAG 330.207.2196 OR [SHERHAG@GMAIL.COM](mailto:SHERHAG@GMAIL.COM)



# Three little birds... singing sweet songs



Jeff and Holly Noordsy

18 Route 74, Cornwall, VT

[www.noordsyantiques.com](http://www.noordsyantiques.com) • [jeffnhol@gmail.com](mailto:jeffnhol@gmail.com) • 802-462-2901





**JEWETT-BERDAN ANTIQUES**, Newcastle, Maine — Small overmantel of the Troy Conference Academy, Poultney, Vt. It was an academy for girls founded in 1834, burnt and rebuilt, on poplar panel, circa 1840.



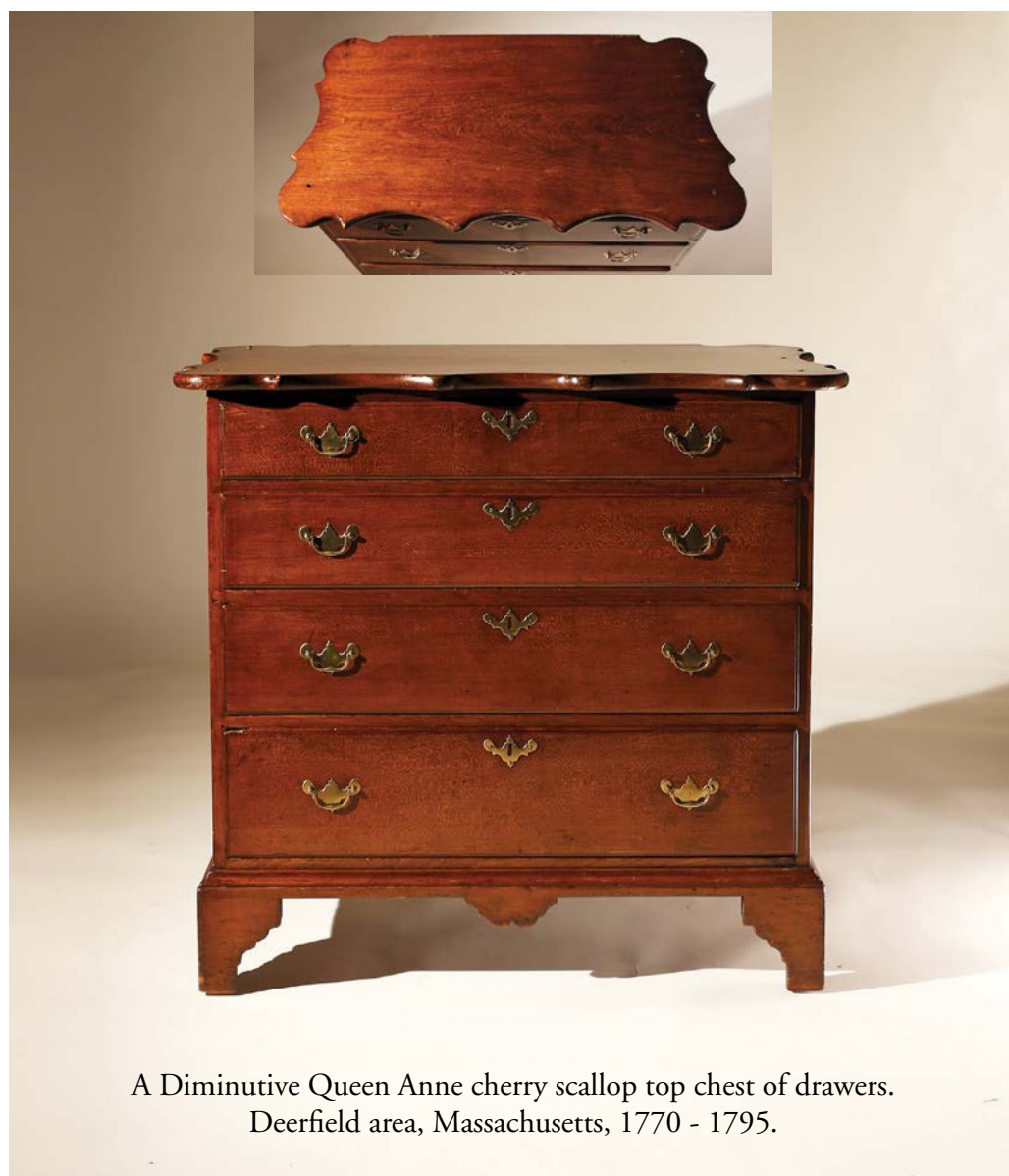
**VILLAGE BRAIDER**, Plymouth, Mass. — Carving of an owl with a claw for a beak, 16½ inches tall, Tupper Lake, N.Y. origin.

**IAN McKELVEY ANTIQUES**, South Windham, Conn. — Early Twentieth Century abstract hooked rug.

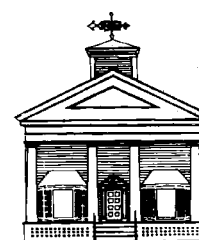
**JEFF & HOLLY NOORDSY ANTIQUES**, Cornwall, Vt. — Cast iron Tammany mechanical bank, circa 1873.



**KEN & ROBIN PIKE**, Nashua, N.H. — Early Twentieth Century post office sign with molded edges, original paint, 19 inches wide by 8¾ inches long.



A Diminutive Queen Anne cherry scallop top chest of drawers. Deerfield area, Massachusetts, 1770 - 1795.



**NATHAN  
LIVERANT  
AND SON, LLC  
ANTIQUES**

168 SOUTH MAIN STREET  
P.O. BOX 103, COLCHESTER, CT 06415  
(860) 537-2409

Visit us at: [liverantantiques.com](http://liverantantiques.com)  
Follow us at: [www.facebook.com/NLS.antiques](https://www.facebook.com/NLS.antiques)  
[mail@liverantantiques.com](mailto:mail@liverantantiques.com)





## Have a rocking good time visiting us in booth 23



Carousel Horse, circa 1890 repurposed as rocking horse. Lacking one ear, wear and splits. Found by us in the early Cornish, New Hampshire home of artist Kenyon Cox (1856 – March 17, 1919). The former owners believe that several carousel horse were repurposed into rocking horses during first quarter of the 20th Century by a local unknown artist. Including the base the piece is 60" long and 48" high.



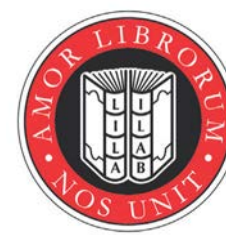
We will bringing our usual selection of rare books, ephemera, and Shaker pieces.

## DeWolfe & Wood Rare Books

Route 202, P.O. Box 425, Alfred, ME 04002  
(207) 490-5572 • [www.dwbooks.com](http://www.dwbooks.com)  
[dewolfeandwood@roadrunner.com](mailto:dewolfeandwood@roadrunner.com)



*Successors to Tuttle's of Vermont serving collectors and readers since 1830*  
*Find the best in rare books and ephemera at [ABAA.org](http://ABAA.org)*







IAN McKELVEY ANTIQUES, South Windham, Conn. — Fine Centennial hooked rug.



DeWOLFE & WOOD RARE BOOKS, Alfred, Maine — This French Canadian student map of North America is dated 1854 and nicely framed, measuring 22 by 18 inches (frame size).

## The 65th Annual New Hampshire Antiques Show



SAMUEL FORSYTH ANTIQUES, Columbus, Ohio — Redware harvest jug, first half of the Nineteenth Century.



PETER SAWYER ANTIQUES, Exeter, N.H. — A choice miniature Massachusetts bureau with tiger maple drawer fronts, in original condition



STEPHEN-DOUGLAS ANTIQUES, Rockingham, Vt. — Rare "British Queen" historical hat box.

Oil on Canvas. 26 1/2" x 38 1/4"



Robert T. Foley Antiques Gray, Maine (207) 756-4290 Booth 57



# IAN MCKELVEY ANTIQUES

South Windham, CT • 860-208-7809



Exceptional 20th Century Gameboards

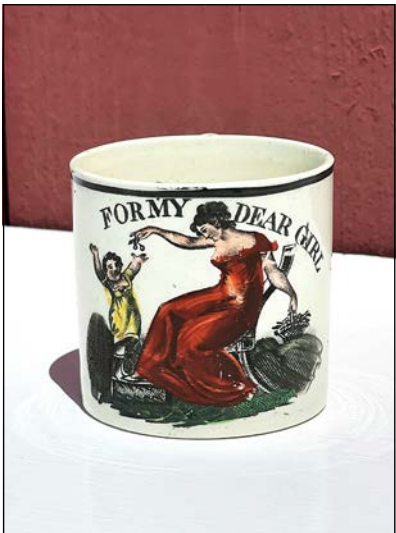




IAN McKELVEY  
ANTIQUES, South  
Windham, Conn. —  
Cast iron bust.



nhada.org



JEFF & HOLLY NOORDSY  
ANTIQUES, Cornwall, Vt. —  
English pearlware child's mug,  
circa 1820.



DAVID SCHORSCH/EILEEN SMILES, Wood-  
bury, Conn. — Impeccable Philadelphia low-  
back Windsor armchair in early brown paint,  
circa 1765-80. A well-known published exam-  
ple. A world class armchair.

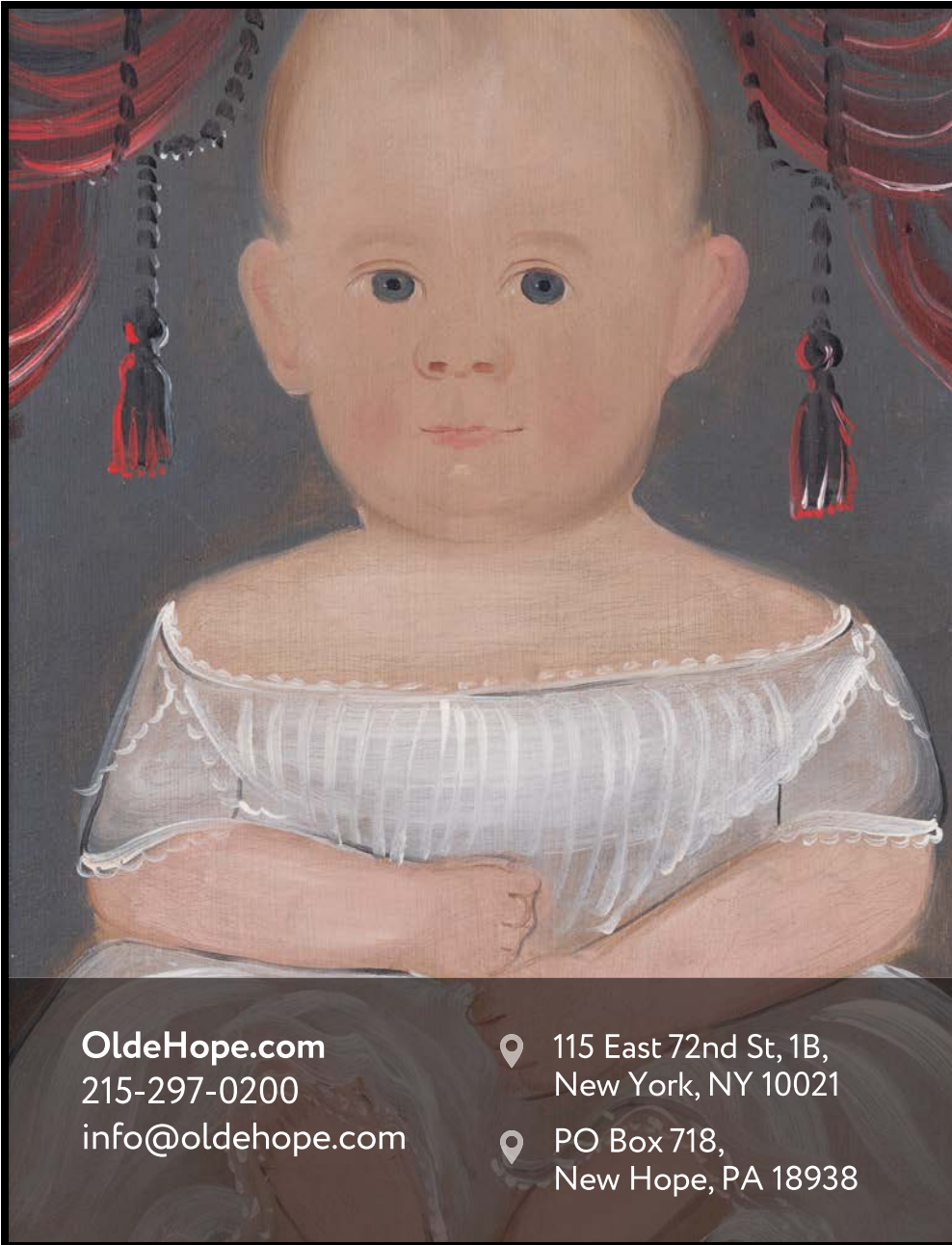
nhada.org



STEPHEN-DOUGLAS ANTIQUES, Rockingham, Vt.  
— Carved American knife box with facing birds,  
circa 1840.



JEWETT-BERDAN ANTIQUES, Newcastle,  
Maine — Double-sided tourists and shield tin  
painted sign.



OldeHope.com  
215-297-0200  
info@oldehope.com

115 East 72nd St, 1B,  
New York, NY 10021  
PO Box 718,  
New Hope, PA 18938



OLDE  
HOPE



# RESSER-THORNER ANTIQUES

*A single-owner shop in the New England tradition*

603-540-4712  
695 River Road, Manchester, NH 03104  
By Appointment

## CELEBRATING 50 YEARS OF BUYING AND SELLING



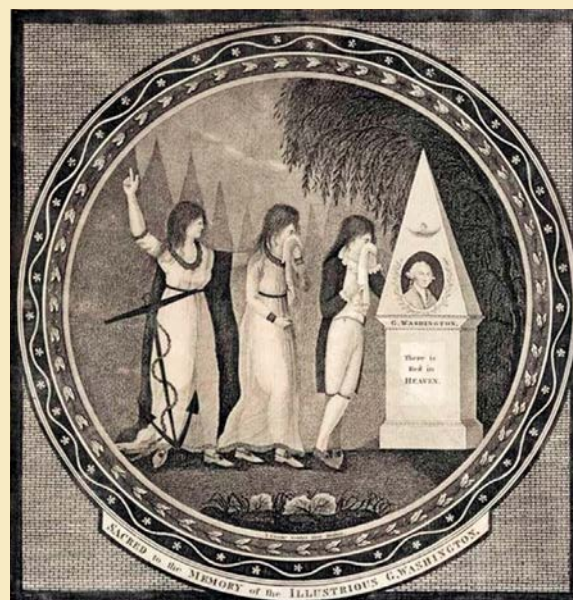
1972



A seemingly rare bronze plaque with "Washington" cast at its bottom, 6.25" wide. The reverse has an attached note: "Done from life this model cast by M. Portiaux 1792" in a period gilded frame which has some chipping. Provenance: Northeast Auctions



Superbly cast bronze plaque in gilded bronze frame, 5.75" (total width), c. 1850



"Sacrificed to the Memory of the Illustrious G. Washington" by Thomas Clarke (Boston), 1801, 8.5" x 8", superb condition in Perry Hopf frame



"Lived respected and Feared - Died Lamented and Revered" hand-colored etching published by Pember & Luzader (Philadelphia), 1800, 11.5" x 9.5" (sight) in period frame. Wick 72, Hart 644, Baker 408



"Le General Washington" engraving by Noel Le Mire after Jean Baptiste Le Paon after Charles Willson Peale, 1780, 19.5" x 13.5" (sight). A fine presentation with small, vertical tears and discoloration primarily in the bottom legend section. In a Perry Hopf frame. Hart 31.

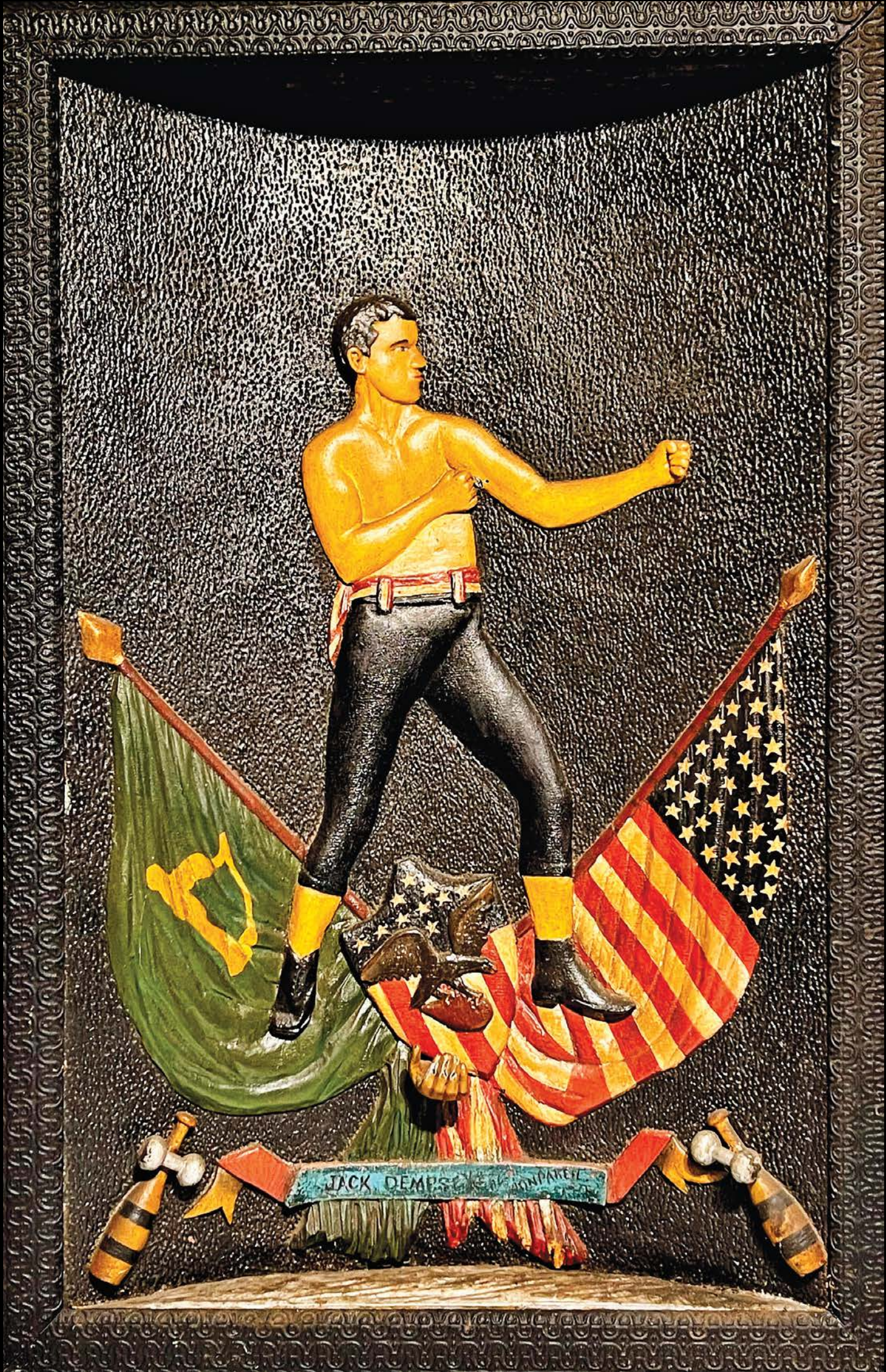


"Apotheosis of Washington" or "Commemoration of Washington" by John James Barralet, 1816, probably Philadelphia (where it was originally printed without the Commemoration title in 1802). A beautiful copy with full margins, minor folds, in its original gilded frame. Wick 101.



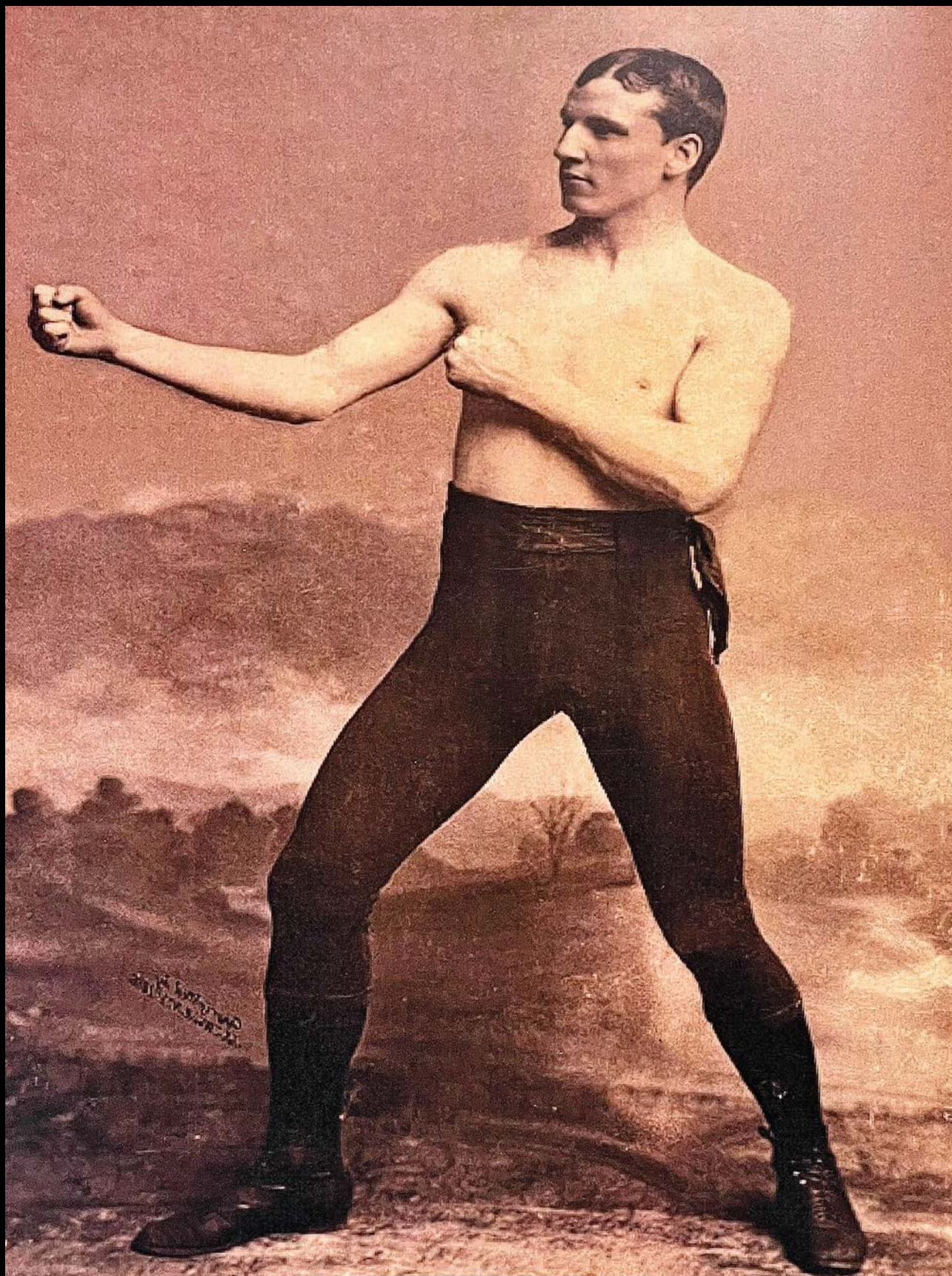


# Jewett-Berdan





# Jewett-Berdan



Carved and polychrome painted wooden folk art plaque of Jack Dempsey, Boxing's first world middleweight champion which earned him the name "Nonpareil", translating to "Without Equal." Late 19th century, N.Y., measuring 41" x 22"

VISIT US IN BOOTH #47, LOWER LEVEL

**Thomas J. Jewett**

15 Hopkins Hill Road  
Newcastle, Maine 04553

**Charles P. Berdan**

[jewett-berdan@roadrunner.com](mailto:jewett-berdan@roadrunner.com)

[www.Jewett-Berdan.com](http://www.Jewett-Berdan.com)

(207) 563-3682

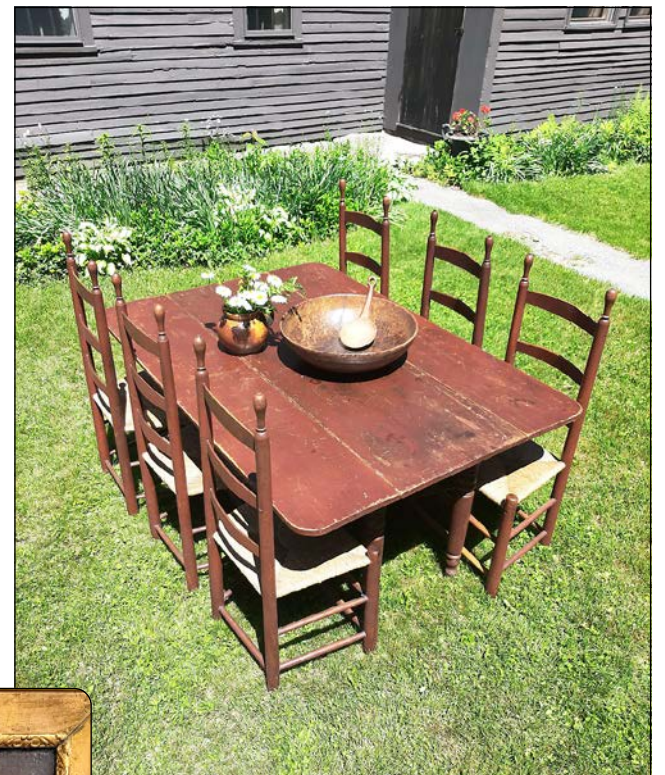






**PETER SAWYER ANTIQUES, Exeter, N.H.** — Harry Leslie Hoffman (1871-1964), "Going to Market, Savannah," 1915, measuring 8 by 10 inches, signed lower center.

**JEFF & HOLLY NOORDSY ANTIQUES, Cornwall, Vt.** — Sapphire blue GI-37 Washington-Taylor quart.



**BOB JESSEN/JIM HOHNWALD, Fitzwilliam, N.H.** — A 61-inch-long drop leaf harvest table in old red paint, New England, circa 1800-30, and matching set of six ladderback side chairs in original red paint.

[nhada.org](http://nhada.org)



**DENNIS & DAD ANTIQUES, Fitzwilliam, N.H.** — Black transfer decorated English pearlware pitcher with dogs, cats, roosters, girls jumping, horses, rabbits, man crouching with horn, ladies in their finery, etc, decoration, circa 1830-40, 8 inches tall by 8½ inches wide.

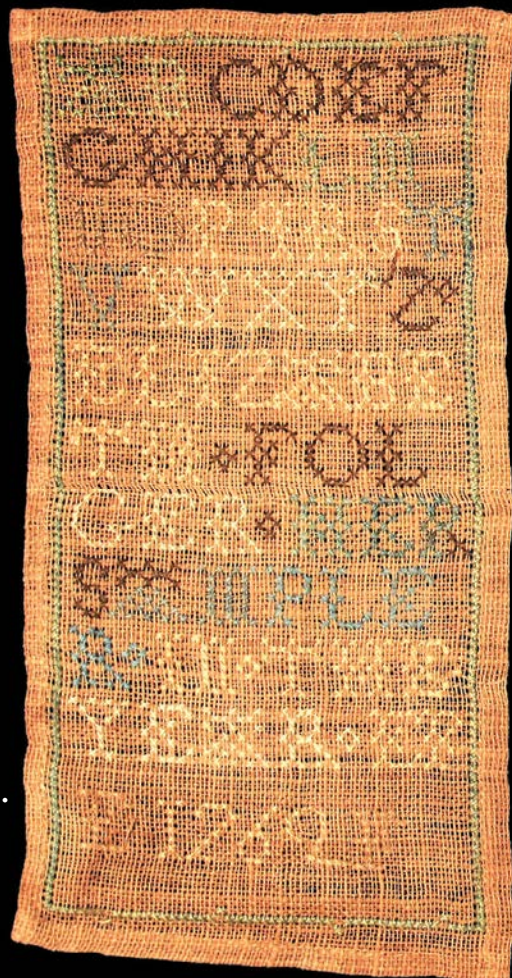


**RESSER-THORNER ANTIQUES, Manchester, N.H.** — "Frederick the Great," Eighteenth Century oil on canvas, 18 by 13½ inches (sight) with period inscription on verso: "Fredericus Rex Born \_ January \_ / F3RB obt. 17 August 1786/ AE 74 yrs 11 Months in the 46 Year of his Reign." Framed. A few patches on the verso, unlined.

## TWO RARE 18th c. NANTUCKET FOLGER FAMILY SAMPLERS

Elizabeth Folger  
(b.1749 d. 1763)  
worked in 1762.  
Size: 9 x 4 ¾

Found together in  
Central MA.  
More genealogical  
information available.



Phebe Folger  
(niece of Elizabeth)  
born in the year 1782.  
Size: 8 ¾ x 4 1/8

A similar example is in  
the collection of the  
Nantucket Historical  
Association.



## DAVID THOMPSON ANTIQUES & ART

David Thompson  
dtjt@sover.net

Jane Turano-Thompson  
South Dennis, MA

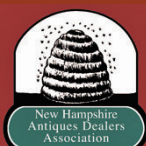
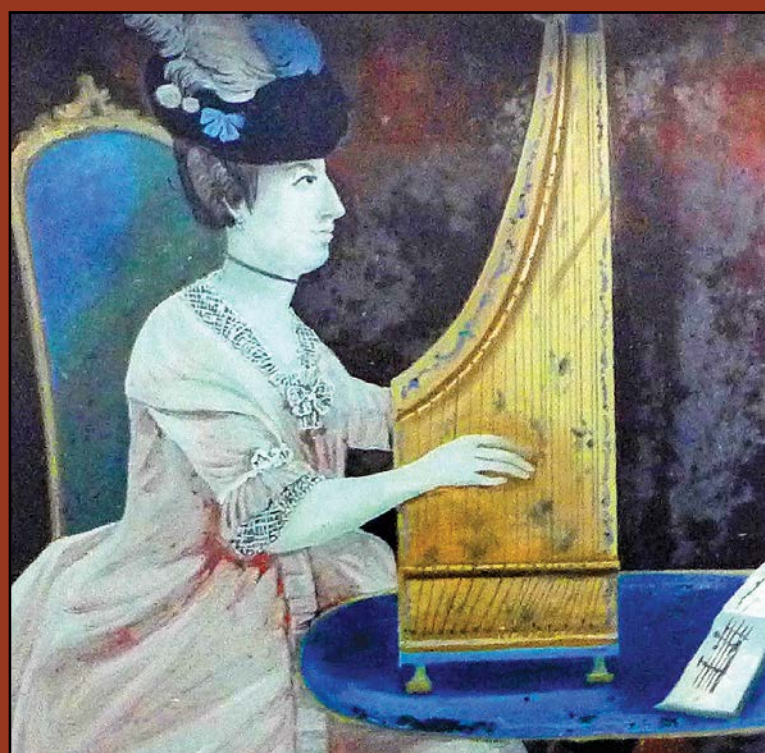
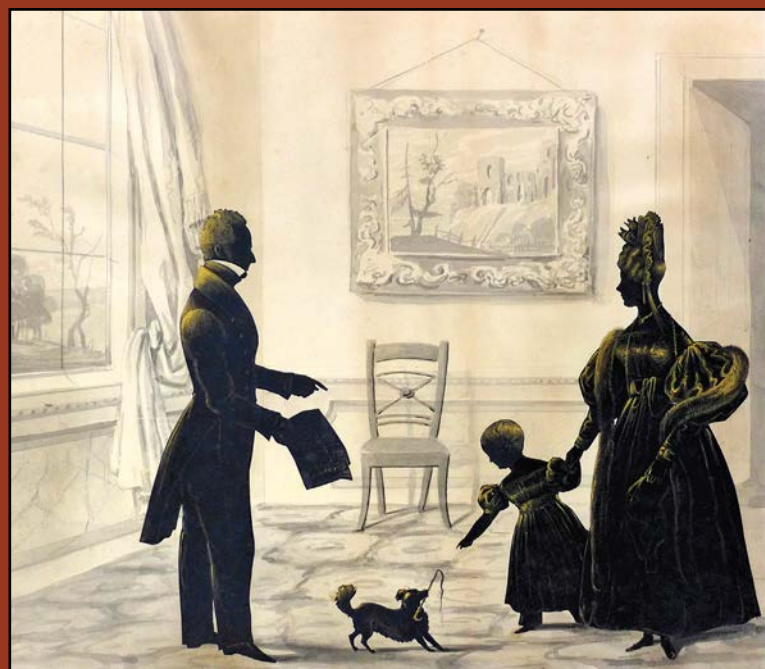
802 238-6987





# McClard Segotta Antiques

Peggy McClard & Randy Segotta  
Folk Art & Americana  
Shows & On the Internet



Visit us in Booth 53 at the  
65th Annual New Hampshire  
Antiques Show  
Doubletree by Hilton  
Manchester, NH  
August 11-13, 2022

Great Folk Art & Americana  
at [McClardSegotta.com](http://McClardSegotta.com)

[Peggy@McClardSegotta.com](mailto:Peggy@McClardSegotta.com) • (713) 880-2572  
[Randy@McClardSegotta.com](mailto:Randy@McClardSegotta.com) • (832) 434-1638





VILLAGE BRAIDER, Plymouth, Mass. — Nineteenth Century miniature lift top chest with decoupage decoration, 14½ inches wide by 7½ inches tall by 7 inches deep.

## The 65th Annual New Hampshire Antiques Show



DAVID SCHORSCH/EILEEN SMILES, Woodbury, Conn. — Early Nantucket basket with lolipops and rare openwork sides, circa 1840, 9-inch diameter.



DENNIS & DAD ANTIQUES, Fitzwilliam, N.H. — An early English watch holder with pearlized glaze. The boy and girl each wearing a crown, grandfather's clock decorated with yellow, red, green and purple flowers, circa 1820, measuring 9½ inches tall by 6½ inches wide.

[nhada.org](http://nhada.org)

RESSER-THORNER ANTIQUES, Manchester, N.H. — John Haley Bellamy (American, 1836-1914) carved folk art Masonic shelf, 22 by 12½ inches, original condition with no repairs.

# Thomas M. Rawson

CEDAR RAPIDS, IA • 319-389-2041

*American Folk Art, Redware and Stoneware  
Pottery, Naive and Sophisticated Paintings*



Early 19 c. full length portrait of child with whip



10" tall 19th c. redware pitcher



Wall shelf with drawer ca. 1900 carved and painted



3 whimsy bottles all by Carl Worner - always looking to buy great folk art whimsies.





# HERCULES J. PAPPACHRISTOS

## ART & ANTIQUES

80 HAMPSTEAD ROAD • DERRY, NH 03038  
(603) 548-5959  
herculesderry@comcast.net



**Edward Savage, (American, 1761-1817)**

**Liberty in the Form of the Goddess of Youth, Giving Support to the Bald Eagle**

Stipple Engraving, Published June 11, 1796

Plate size 24 3/4 x 14 7/8, Sheet size 25 3/8 x 16 1/2

Liberty, represented by a maiden in the form of the goddess Hebe, offers a cup to an eagle descending from the upper left.

With her right foot she treads on chains, a scepter, a key and other implements of tyranny.

At the lower right, beyond a pedestal or altar, the town of Boston is visible, with lightning in the sky overhead.

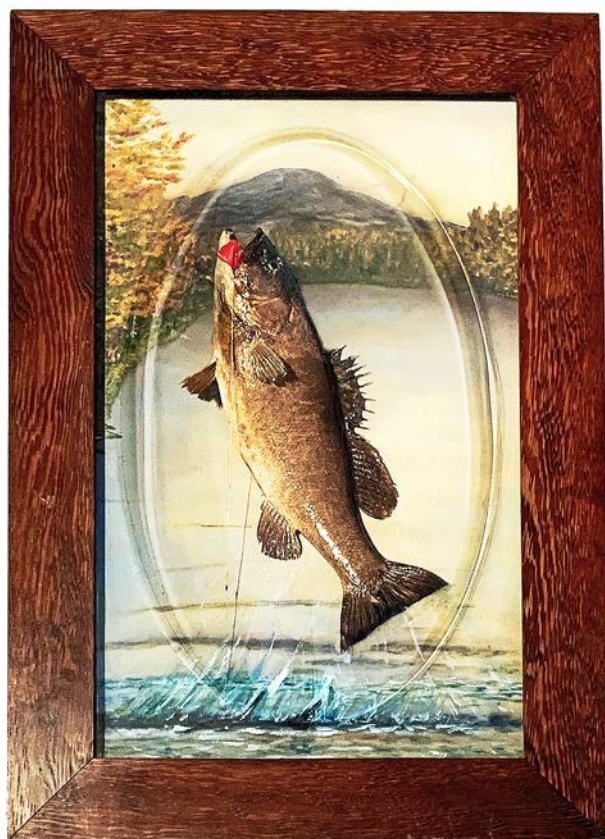




**THOMAS RAWSON ANTIQUES**, Clear Rapids, Iowa — Folk art carvings of Washington and Lincoln signed “Lundburg.”



**DeWOLFE & WOOD RARE BOOKS**, Alfred, Maine — This ovoid jug, 18 inches high, is embossed “Master’s & Co., Druggists, 39 Middle St., Portland” and is available in our booth.



**CHERRY GALLERY**, Damariscotta, Maine — Large taxidermy bass mount by Herb Welch labeled on back with rare sticker, “Mounted by Herbert L. Welch Haines Landing Rangeley Lakes Maine,” measuring 39¼ inches high by 27½ inches wide.

**JEWETT-BERDAN ANTIQUES**, Newcastle, Maine — Mid-Nineteenth Century abstract hooked rug.



**CHRISTOPHER AND BERNADETTE EVANS ANTIQUES**, Waynesboro, Va. — Oversized merganser duck decoy, 25 inches long.



# John H. Rogers Antiques LLC

[www.johnhrogersantiques.com](http://www.johnhrogersantiques.com)

Height: Top of handle 9 1/2 in.  
Height: Top of rim 7 1/2 in.  
Length: 17 1/2 in.  
Weight: 14 1/2 in.

Early Ash Burl Bowl  
One handle





*Coming Home To  
Manchester, New Hampshire  
at the 65th Annual  
NHADA Show*



**Portrait of a Young Manchester Lady**

By J.H. Knowlton c.1840

Signed on the reverse: JH Knowlton, Manchester, NH  
The only known signed portrait by J.H. Knowlton



**Corner Cupboard  
with Bold Decoration**

Bedford County, Pennsylvania c. 1830

**JK Nevin Antiques**

Elverson, Pennsylvania

[www.jknevinantiques.com](http://www.jknevinantiques.com) | [jknevinantiques@gmail.com](mailto:jknevinantiques@gmail.com)

Liz McElroy 610-585-2244

**KATE A. ALEX**

Warner, NH

603-491-1499



19th Century Patinated Bronze Grand  
Tour Statue of Narcissus Mounted on a  
Marble Base. Ex Cond. 13" Tall.



One of a Pr. of Large Cast Iron French Urns  
Signed "Alfred Cornaeu". Ex.  
Surface and Cond. 16" Tall X 17" Wide.



One of a Pr. of Composition Stone Fruit  
Compotes. Mossy Old Surface.  
Weathered Patina. 14" Tall X 16" Wide.



Impressive Pr. of Patinated Bronze sculptural  
horns on Classical Bronze Base. Ex. Cond. 30" Tall.





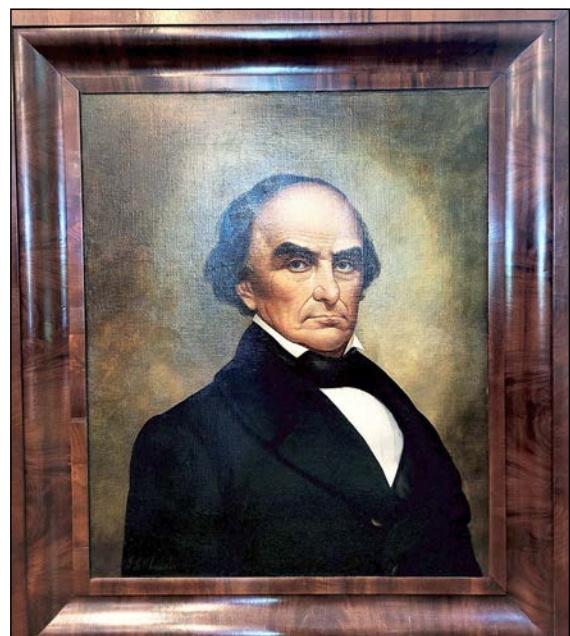
CHERRY GALLERY, Damariscotta, Maine — Antique Black Forest antler chandelier with refurbished wiring and fixtures, 35 inches high; 36-inch diameter.



nhada.org



IAN McKELVEY ANTIQUES, South Windham, Conn. — Two-sided Nineteenth Century tavern sign. Side one with Rob Roy MacGregor, side two with Robert Burns.



DeWOLFE & WOOD RARE BOOKS, Alfred, Maine — An oil painting of Daniel Webster painted by Joseph Goodhue Chandler, measuring 33½ by 39 inches. It has been cleaned and restored.



STEVEN STILL ANTIQUES, Manheim, Penn. — Paint-decorated hanging shelf with the original mauve and green sponged paint decoration.



**Douglas R Wyant**  
ANTIQUES

920 E State Street  
Cassopolis, MI 49031  
269-214-6354





KATE A. ALEX & CO., Warner, N.H. — Framed colorful oil on board folk art painting signed "Ames." On the verso is written the title "On The Sound." Sight size is 23 by 29 inches.

KEN & ROBIN PIKE, Nashua, N.H. — Grenfell mat with original label, measuring 10 inches wide by 14 inches long in excellent condition.



CHRISTOPHER AND BERNADETTE EVANS ANTIQUES, Waynesboro, Va. — Rare, early redware jar attributed to Christian Klinker, Bucks County, Penn.



nhada.org



JEFF & HOLLY NOORDSY ANTIQUES, Cornwall, Vt. — Nineteenth Century tiger maple cooking utensil.



PETER SAWYER ANTIQUES, Exeter, N.H. — Extremely rare pine garniture steps, New England, late Eighteenth Century, in original untouched condition.

## NANCY & GENE PRATT

Victor, New York 585.330.7203



A fine selection of early 19th c. wrought iron trivets with heart design

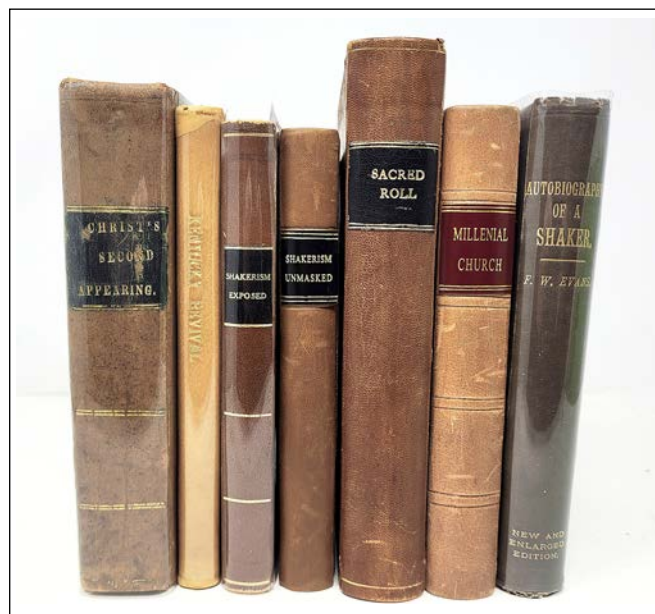




NANCY & GENE PRATT, Victor, N.Y. — Fine Eighteenth Century New England cherry pipebox with dovetailed case and drawer.

## The 65th Annual New Hampshire Antiques Show

DeWOLFE & WOOD RARE BOOKS, Alfred, Maine — A selection of Shaker books and pamphlets from the collection of the late Gerard Wertkin, who was the former director of the American Folk Art Museum are on offer.



HOLLIS BRODRICK, Portsmouth, N.H. — Rare example of early New England pine furniture. This very early one-drawer blanket chest retains its original red paint and worn, single arch molding. Its unusual round cutout "Ball" feet — mimic turned ones — probably for lack of a lathe! Probably Massachusetts, circa 1720-40.



STEVEN STILL ANTIQUES, Manheim, Penn. — Political satire drawing by M. Pritchett for the 1908 presidential campaign.



Connecticut origin. Dated 1828. 18"w x 11½"d x 36"tall. Hanging Spice Cabinet with a "sunken" 2-panel door and 17 interior drawers of various sizes. Original paint and surface. Dovetailed construction/original knobs. Cherry and pine.

## Bob Jessen & Jim Hohnwald

Fitzwilliam, NH ♦ 603-585-9188 ♦ Booth 27







PETER SAWYER ANTIQUES, Exeter, N.H. — Fine Federal bowfront, likely the work of Ephraim Mallard of Concord, in original condition, including brass hardware.



CHRISTOPHER AND BERNADETTE EVANS ANTIQUES, Waynesboro, Va. — Stoneware jug, 2-gallon capacity, with cobalt heart-shaped decoration, stamped, "Fort Edward Pottery Co" Fort Edward New York.



OLDE HOPE ANTIQUES, New Hope, Penn. — Rare Arabian horse weathervane, molded and sheet copper and iron; height is 16 inches and length is 27 inches; unidentified maker, probably Boston, circa 1850.



THE NORWOODS' SPIRIT OF AMERICA, Timonium, Md. — Pair of Nineteenth Century blue skates with curved tips, 15 inches wide by 7 inches high.

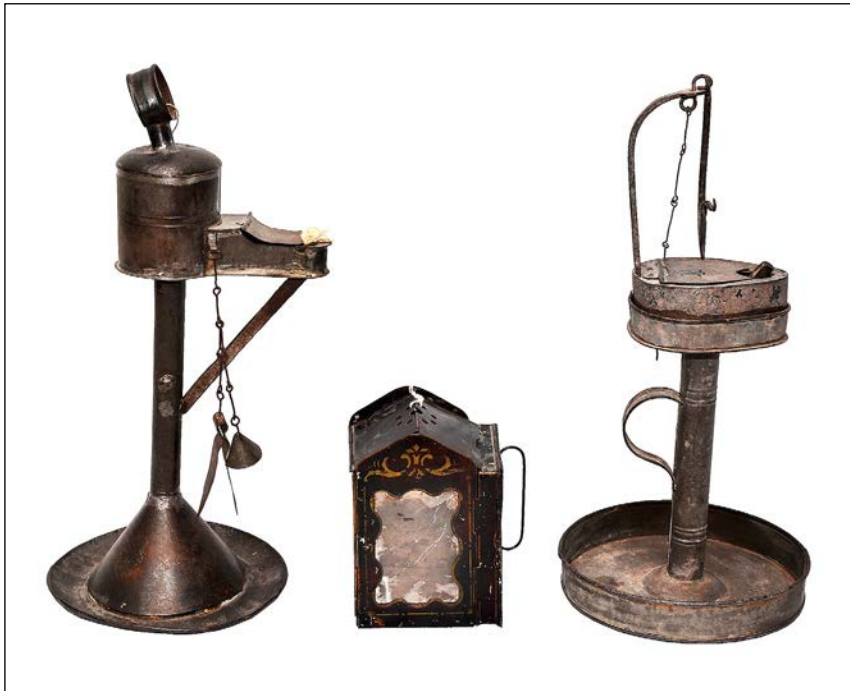
McCLARD SEGOTTA ANTIQUES, Weare, N.H. — Exceptional watercolor theorem on paper in a period gold-leaf frame measuring 15½ by 18½ inches. Reverse inscription, "Agnes Carpenter 1864 Presented by Mr & Mrs Gardner Little Mountain Ohio."



*Figured and historical flasks in a kaleidoscope of color*

*Jeff and Holly Noordsy*  
 18 Route 74, Cornwall, VT  
[www.noordsyantiques.com](http://www.noordsyantiques.com) • [jeffnhol@gmail.com](mailto:jeffnhol@gmail.com) • 802-462-2901





**VILLAGE BRAIDER, Plymouth, Mass.** — Large lot of early lighting, (example shown), deaccessioned from the Lowes Delaware Historical Society.



**JEWETT-BERDAN ANTIQUES, Newcastle, Maine** — Miniature sample sled or doll's sled with a horse in the original paint, circa 1880.

**DENNIS & DAD ANTIQUES, Fitzwilliam, N.H.** — Late Eighteenth Century English creamware covered pouring pot with flower finial and strap handle with flower and leaf terminations, 10 inches tall.



**VILLAGE BRAIDER, Plymouth, Mass.** — Two early Twentieth Century folk paintings on plywood panels signed F. Schulmeister, 16-by-14-inch image size.

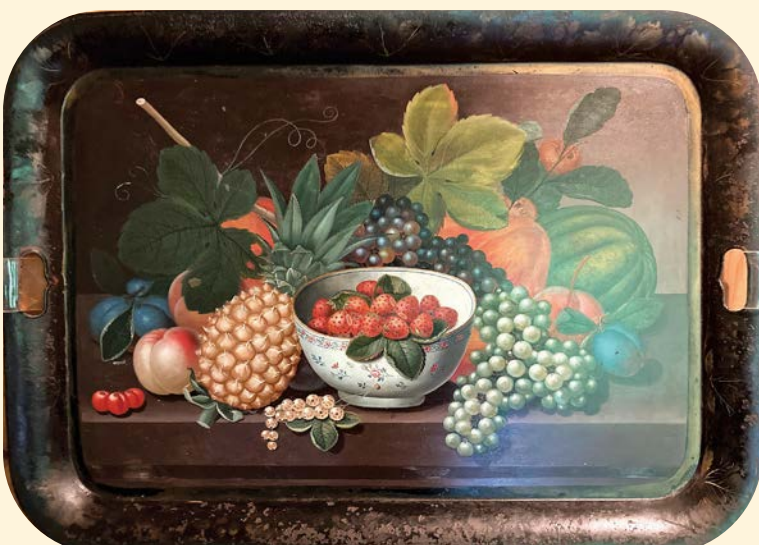


American Carved Wood and sheet metal Gabriel Weathervane

*We Don't Mean to Blow Our Own Horn...but, Great Stuff Coming to New Hampshire!"*



Cow Weathervane retaining its original weathered surface



American Still Life Painting on a metal tray

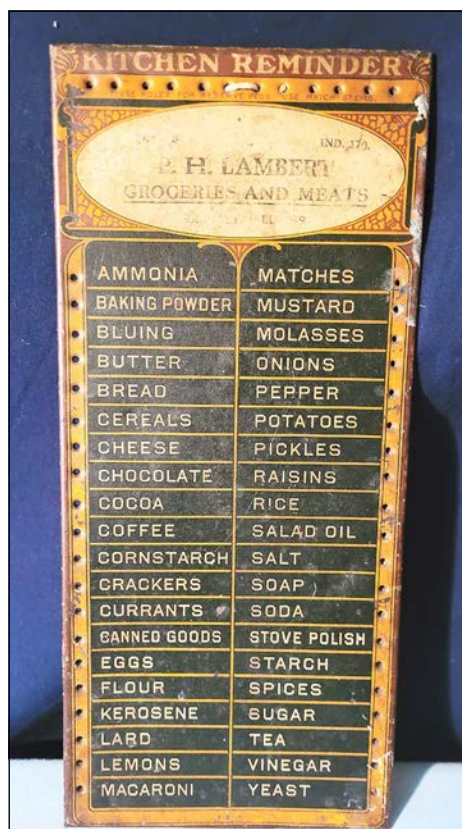
**JUDITH & JAMES MILNE**  
*At Home Antiques*

KINGSTON, NY  
917 402 1778 or 917 754 5454  
[www.milneinc.com](http://www.milneinc.com) | [jmilneantiques@gmail.com](mailto:jmilneantiques@gmail.com)

**BOOTH 14**



IAN McKELVEY ANTIQUES, South Windham, Conn. — Late Nineteenth Century life-size chalkware dog.



JUDITH & JAMES MILNE/AT HOME ANTIQUES, Kingston, N.Y. — Kitchen reminder advertising sign.

*The  
65th Annual  
New Hampshire  
Antiques Show*



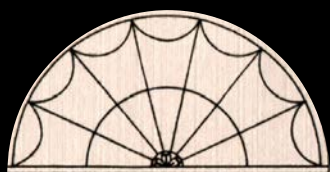
RESSER-THORNER ANTIQUES, Manchester, N.H. — Eighteenth Century miniature portrait of a gentlemen, 1½ by 1 inches (sight) in lignum vitae frame (vertical shrinkage crack) with attached note (on verso): “#582 Miniature by Charles Wilson (sic) Peale.”



CHERRY GALLERY, Damariscotta, Maine — A Navajo Yeibichai rug, measuring 36 inches high by 53½ inches wide.



BOB JESSEN/JIM HOHNWALD, Fitzwilliam, N.H. — A child's paint-decorated arrowback chair in original paint, New England, circa 1825. Plus a pine six-board blanket chest, in original paint/decoration, measuring 44 inches long by 18 inches wide by 23 inches tall, with Vermont origin, circa 1825. As descended surface.



**Paul  
Sullivan**  
ANTIQUES

PO Box 3773  
Manchester, NH 03105  
603-669-8886



19th c pastel of an American clipper ship, noting the flag (burgee) aft and the dolphin striker under bowsprit—stunningly laid down on blue background paper 28 X 20 overall.

Sold years ago, and recently reacquired from a Martha's Vineyard collection.

*Hope to see you there on the Main Aisle booth #24.*





**KEN & ROBIN PIKE, Nashua, N.H. —** Nineteenth Century child's tin drum with patriotic theme, 9-inch diameter.



**JEFF & HOLLY NOORDSY ANTIQUES, Cornwall, Vt. —** Prussian blue GI-54 Washington-Taylor quart.



**BAKER & CO. ANTIQUES, Delmar, N.Y. —** A selection of hand and heart in hands tin cookie cutters in all sizes are available.



**NANCY & GENE PRATT, Victor, N.Y. —** Mid-Nineteenth Century gameboard on poplar panel.

## The 65th Annual New Hampshire Antiques Show

**PETER SAWYER ANTIQUES, Exeter, N.H. —** George S. Wasson, "Block House at Fort McClary, Kittery Point, Maine."



# Dennis & Dad Antiques

Dennis and Ann Berard

33 NH Route 119E | Fitzwilliam, NH 03447 | 603-585-9479

antiques@dennisanddadantiques.com • www.dennisanddadantiques.com



Thomas Whieldon  
Polychrome Charger. c1760  
13 1/4" dia.



Dark Blue "Capital at Harrisburg PA"  
2 pc English transfer decorated soup  
tureen c1825 14 3/4" width across  
handles 12 1/2" Tall



Large English Pearlware  
Jug, early 19th century,  
polychrome enameled  
decoration to a blue transfer  
print. 16 1/2" Tall



From Right: Early 19th Century Earthworm Decorated  
English Mocha Mug in dark and light green, blue,  
and brown 5 3/4" Tall Early 19th Century English  
Marblised Mocha Mug. Shades of brown and white  
with diamond decoration at top. 5" Tall



Three English Pearlware Graduated "Cockerels &  
Birds" Pattern Jugs c1815-30 to 6 3/4" Tall



Yellow Shafted Flicker and  
Young Red Squirrel carved  
by Robert Warfield and  
decorated by Virginia Warfield  
in Jaffrey NH in 1975  
15" tall 11" wide





**KELLY KINZLE ANTIQUES,**  
New Oxford, Penn. — North-  
ern Liberty Hose Company of  
Philadelphia fireman's  
hat for John Abel, circa  
1850, inscribed J. Abel for  
John Abel, a lifetime mem-  
ber of the hose company.



Interior at John H. Rogers Antiques, New London, N.H.



**THOMAS RAWSON ANTIQUES,**  
Clear Rapids, Iowa — Folk carved  
frame with doves and nude woman  
used in early Twentieth Century  
film *Tom Sawyer*.

[nhada.org](http://nhada.org)

**RESSER-THORNER ANTIQUES,**  
Manchester, N.H. — “Major General  
John Sullivan,” mezzotint, 1776, by  
James Hart, 14 by 10½, full-plate  
marks, overall toning, minor stain l.l.  
corner. Perry Hopf frame.



**SCOTT BASSOFF/SANDY JACOBS ANTIQUES,** Swamp-  
scott, Mass. — A 14K gold eagle brooch with ruby eye  
and pearl in mouth.

# PAM & MARTHA BOYNTON ANTIQUES



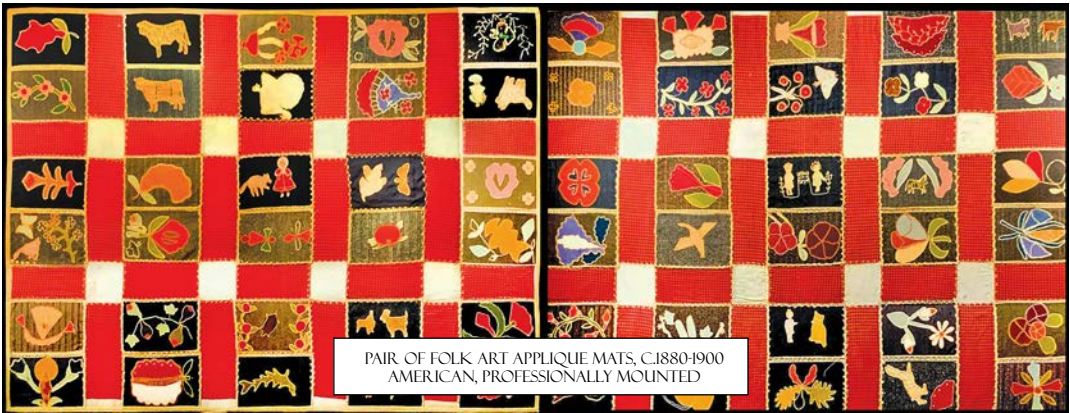
WATERCOLOR ON PAPER THEOREM, UNUSUAL BASKET, PERIOD GOLD LEAF FRAME, 18" X 22"



NANTUCKET SAILOR WHIRLIGIG,  
LIKELY BY HARRY HILBERT,  
DEVY BOY, HAPPY JACK, C. 1900  
HEIGHT: 19.5"



FOLK ART CAT PAINTING; CAT STARING AT BIRDCAGE  
10" X 12" IN FRAME, ALL ORIGINAL, OIL ON ARTBOARD



PAIR OF FOLK ART APPLIQUE MATS, C1880-1900  
AMERICAN, PROFESSIONALLY MOUNTED



SET OF 5 NESTING PAPER BOXES,  
THEOREM DECORATED TOPS,  
CONTINENTAL, C1900, 3" X 2" - 5" X 4"

WE HAVE MOVED.....AROUND THE CORNER; FROM BOOTH 61 TO 51, PLEASE VISIT US THERE

PAM & MARTHA BOYNTON 1 GREELEY RD. TOWNSEND, MA 01469 • 978-835-5920





DAVID SCHORSCH/EILEEN SMILES, Woodbury, Conn. — Samuel A. Shute watercolor portrait of a young man, probably New Hampshire, circa 1830, 23 by 18 inches, with original frame and notable provenance.



THE NORWOODS' SPIRIT OF AMERICA, Timonium, Md. — Nineteenth Century skillfully detailed nautical bottle, 14½ inches high with a 4-inch diameter.



JEFF & HOLLY NOORDSY ANTIQUES, Cornwall, Vt. — Golden amber GI-52 Washington-Taylor quart.



BAKER & CO. ANTIQUES, Delmar, N.Y. — An assortment of painted smalls.



Interior at John H. Rogers Antiques, New London, N.H.

# Melissa Alden

Portsmouth, New Hampshire



*NHADA Show*  
*Our 65th Year*  
*Congratulations*  
*To Us!*



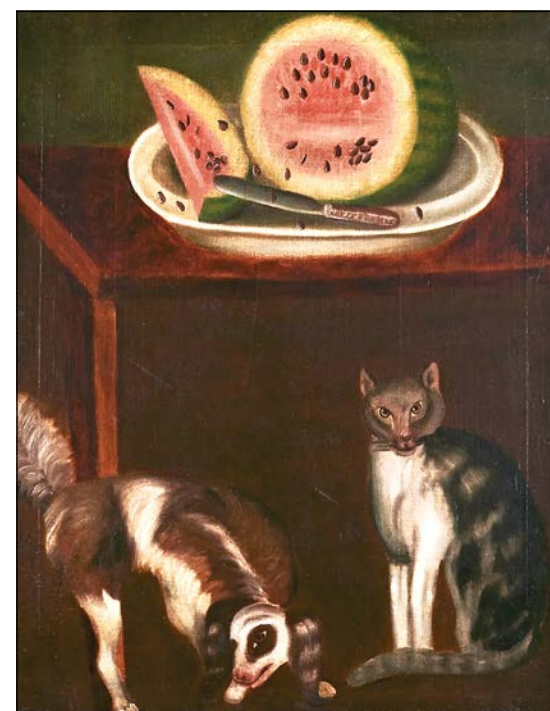


**JEFFREY TILLOU ANTIQUES**, Litchfield, Conn. — Portrait of a boy holding a horn seated by his dog, American School, New York or New England, circa 1835-45, oil on canvas, 41 inches high by 34 inches wide. Overall in great condition, lined, very minor scattered in-painting. Provenance: Private collection, Texas. This very charming and pleasing portrait of a boy dressed in a green shirt and white pants is holding a horn while seated next to his dog. The portrait is further complimented with a landscape view and a waterfall in the background.

[nhada.org](http://nhada.org)



**DAVID THOMPSON ANTIQUES & ART**, South Dennis, Mass. — Exceptionally well-constructed 19th c. berry basket, with a most unusual, finely carved handle, double bottom, oak, having rich, deep patination. Shows several characteristics of Taghkanic basketry. Ex: Blouin collection. Height with handle: 7¼ inches.



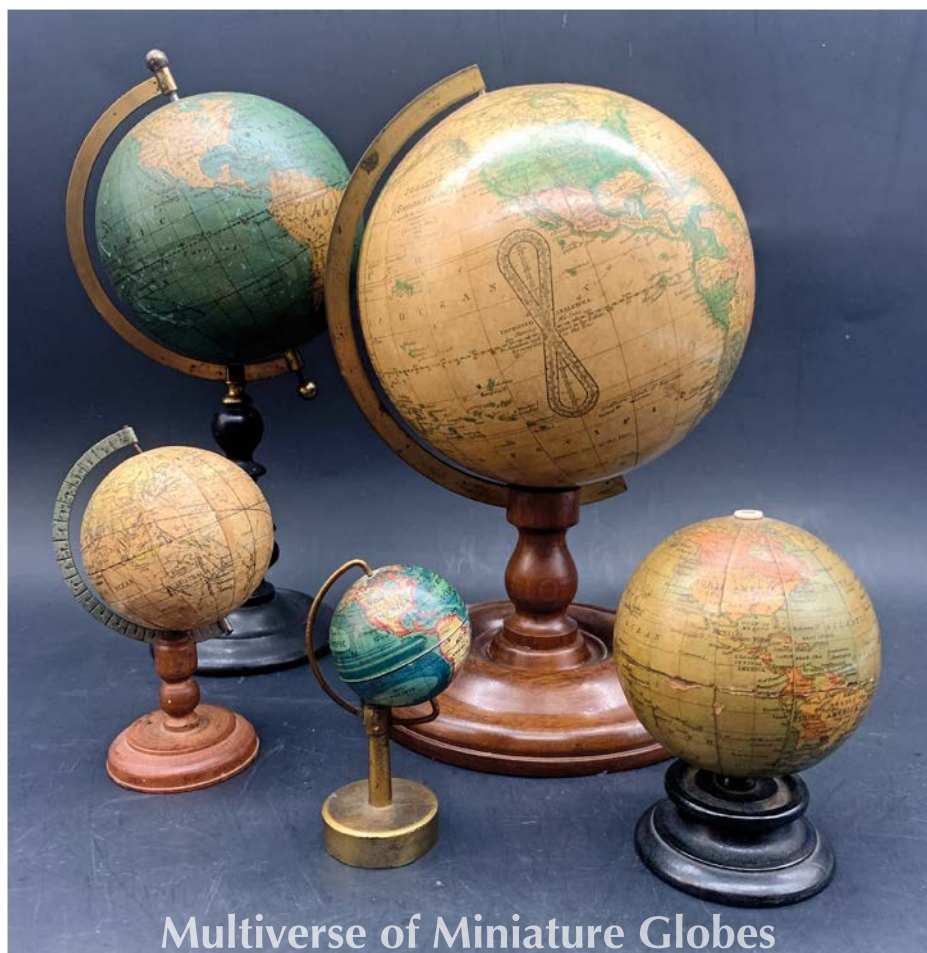
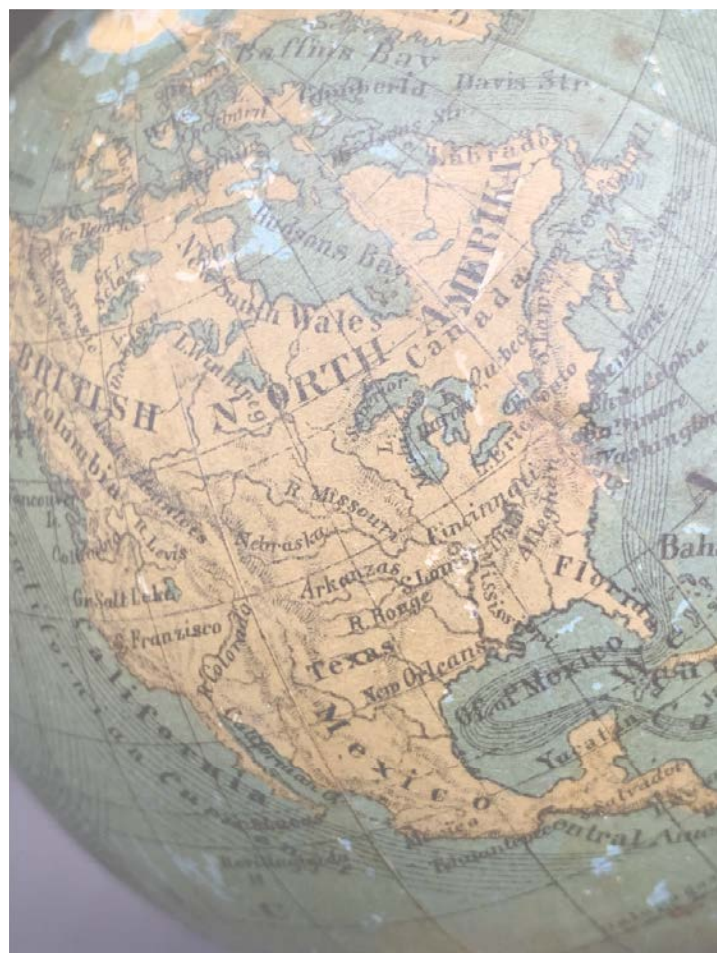
**JK NEVIN ANTIQUES**, Elverson, Penn. — Nineteenth Century folky still life with cat and dog, oil on canvas.

**HOLLIS BRODRICK**, Portsmouth, N.H. — Just part of a great collection of Eighteenth Century New England "hearth iron," to include two American pipe tongs (one with engraved decoration), a rare "single chop" toaster, exceptional early skewer holder with "handle bar" scrolled arms, etc.

## MARY AND JOSHUA STEENBURGH

### ANTIQUE FURNITURE AND FOLK ART

Pike, New Hampshire



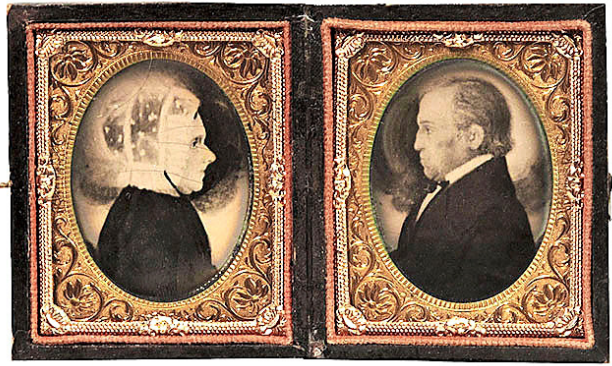
Multiverse of Miniature Globes

603.303.3072

[josh@steenburgh.com](mailto:josh@steenburgh.com)

[www.maryandjoshua.com](http://www.maryandjoshua.com)





**DAVID THOMPSON ANTIQUES & ART**, South Dennis, Mass. — Pair of tintypes of portraits by James Sanford Ellsworth, itinerant folk artist, active 1840-60. They exhibit his signature style of clouds surrounding sitters' profiles. These tintypes, almost certainly made so that another family member could have their likenesses, date from circa 1860. Each tintype is "ninth" plate size, and both are in their original double case. Overall size: 2-7/8 by 4-7/8 inches.



**JEF & TERRI STEINGREBE**, New London, N.H. — Nineteenth Century plant stand in clean original green paint with a selection of smalls, including brightly colored knock down set, grouping of choice velvet fruit and two striking pieces of Maine redware.



**KATE A. ALEX & CO.**, Warner, N.H. — Nineteenth Century cast iron English "Rustic" or "Berlin" pattern garden bench, 71 inches long, attributed to the Coalbrookdale Co. Great Surface.



**BOB JESSEN/JIM HOHNWALD**, Fitzwilliam, N.H. — Miniature carved and painted birds.

## *The 65th Annual New Hampshire Antiques Show*

**JK NEVIN ANTIQUES**, Elverson, Penn. — Early Eighteenth Century William and Mary desk with ball feet and unique hand-forged iron desktop supports. Original interior knobs, period cotter-pin brasses.



# PEWTER & WOOD ANTIQUES



*Theorem on velvet, as found, stitched to wooden board. Fabric consists of two horizontal pieces stitched together. First half 19th c. 25" w x 22 h.*

**Barbara Boardman Johnson** | Enfield, NH | (602) 677-5686 | **BOOTH #7**





**Ventriloquist Puppet**  
Carved wood with original clothing.  
H 17 inches.

**Jeffrey Roelof**

**ANTIQUES**

269-271-1799  
folkart1@yahoo.com



Booth #6

# Cherry Gallery



Crooked knife with figural  
closed hand embellishment and shaped  
finger-hold grip, birch with bone inlay collar,  
late 19th century

**Damariscotta, ME**

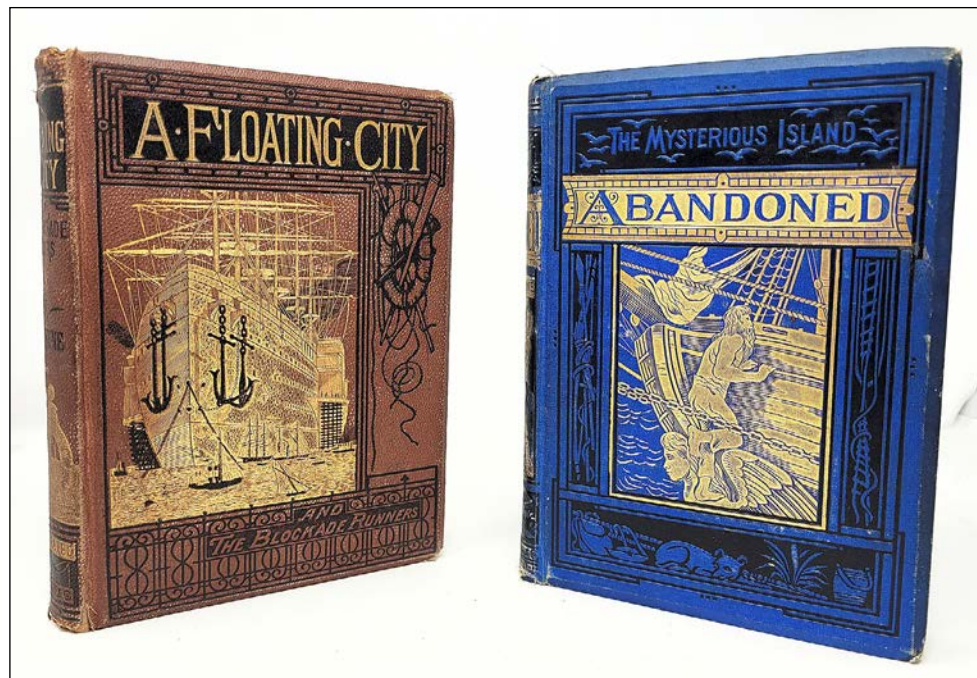
**207.563.5639**

**cherrygallery.com**





DAVID SCHORSCH/EILEEN SMILES, Woodbury, Conn. — Small Shaker oval fingered box in mint condition with original yellow wash, probably Canterbury, N.H., circa 1840, width 4¾ inches.



DeWOLFE & WOOD RARE BOOKS, Alfred, Maine — A large display of rare books, including these first edition Jules Verne Books will be available in our booth.

OLDE HOPE ANTIQUES, New Hope, Penn. — "Farm Scene with Mill Pond," Pennsylvania, circa 1910, oil on canvas, 17¾ by 23 inches; in a late Nineteenth Century frame, 21¼ by 26½ inches. Provenance: Ruth Troiani Fine Antiques, Farmington, Conn.; Samuel H. DuPont (1901-1974); William K. DuPont Collection.

JUDITH & JAMES MILNE/ AT HOME ANTIQUES, Kingston, N.Y. — Large folky sheet iron rooster weather-vane in old paint.



## TUCKER FREY ANTIQUES

256 MAIN STREET SOUTH  
WOODBURY, CT 06798  
(203) 263-5404  
TFREY90549@AOL.COM

OPEN WED-SUN 11-4





JK NEVIN ANTIQUES, Elverson, Penn. — Rare early Nineteenth Century caneware bee skep teapot and sugar/honey pot. Wedgwood, Staffordshire, England, 1800-15. Impressed "Wedgwood."



CHRISTOPHER AND BERNADETTE EVANS ANTIQUES, Waynesboro, Va. — Early Nineteenth Century dovetailed dome top box with heart escutcheon in old surface.



PETER SAWYER ANTIQUES, Exeter, N.H. — Rare kidney dial shelf clock by William Cummins, Boston.



NANCY & GENE PRATT, Victor, N.Y. — Fine Eighteenth Century American red-painted candle lantern.

August 11 - 13, 2022



Interior at John H. Rogers Antiques, New London, N.H.



Come by and see me!

Booth # 26

Sheridan Loyd  
american ✱ antiques

[www.sheridanloyd.com](http://www.sheridanloyd.com)

(816) 210-6924

Shown here is just a small sampling of the many fresh finds I have been saving for the show.





# CELEBRATING 65 YEARS OF THE New Hampshire Antiques Show

## OUR DEDICATED EXHIBITORS

### 40 YEARS & UP!

61 Years	Pam & Martha Boynton
61 Years	M.S. Carter - Melissa Alden
50 Years	Stephen Douglas at Walpole
45 Years	Thomas R. Longacre Antiques
40+ Years	Thomas M. Thompson, NHADA President
40 Years	Withington & Co.

### 20-39 YEARS

38 Years	Hollis Brodrick
38 Years	Scott Bassoff and Sandy Jacobs
35 Years	Ken & Robin Pike
30+ Years	Jef & Terri Steingrebe
29 Years	Brian J. Ferguson
28 Years	Peter Sawyer Antiques
27 Years	Michael Whittemore Antiques & Folk Art
26 Years	Kate A. Alex & Co.
25 Years	Bob Jessen & Jim Hohnwald
22 Years	Jewett-Berdan Antiques
22 Years	Judith & James Milne/ At Home Antiques
20 Years	Dennis & Dad Antiques

### 11-19 YEARS

18 Years	Nathan Liverant and Son, LLC
18 Years	Sharon Platt American Antiques
17 Years	Hercules Pappachristos
17 Years	Steven F. Still Antiques
15 Years	Resser-Thorner Antiques
15 Years	Mary & Joshua Steenburgh
14 Years	Brock & Co.
13 Years	Cherry Gallery
13 Years	Jeff & Holly Noordsy Art and Antiques
11 Years	Nancy & Gene Pratt
11 Years	Jonathan Trace

### 6-10 YEARS

10 Years	John Chaski Antiques
10 Years	Robert T. Foley Antiques
10 Years	The Norwoods' Spirit of America
10 Years	Olde Hope Antiques, Inc.
10 Years	Paul D. Sullivan Antiques
10 Years	Douglas Wyant Antiques, LLC
9 Years	John H. Rogers Antiques
8 Years	Kelly Kinzle
8 Years	Pewter & Wood Antiques
7 Years	DeWolfe and Wood
7 Years	Ian McKelvey Antiques
7 Years	Stephen Score, Inc.
6 Years	Christopher & Bernadette Evans Antiques
6 Years	Tucker Frey Antiques
6 Years	Pat & Rich Garthoeffner
6 Years	Old as Adam

### 1-5 YEARS

5 Years	Samuel W. Forsythe Antiques
5 Years	Jeffrey Roelof
5 Years	Village Braider, Inc.
4 Years	David A. Schorsch - Eileen M. Smiles American Antiques
3 Years	McClard-Segotta Antiques
3 Years	David Thompson Antiques & Art
2 Years	Cottage & Camp
2 Years	Early American Antiques
2 Years	Sheridan Loyd Antiques
2 Years	Thomas M. Rawson Antiques
2 Years	Jeffrey Tillou Antiques
1 Year	Baker & Co. Antiques
1 Year	JK Nevin Antiques

### 25 YEARS - OUR WONDERFUL STAFF

Paula & Scott Moreau, Michael Sczerzen, Danny Piatt



JUDITH & JAMES MILNE/AT HOME ANTIQUES, Kingston, N.Y. — Pair of wood penguins in old painted surface.

KATE A. ALEX & CO., Warner, N.H. — Large pair of bronze cranes, piped to cascade water from their beaks. Good old patina. Measures 37 and 42 inches tall. In excellent condition.



### 65th Annual New Hampshire Antiques Show

CHRISTOPHER AND BERNADETTE EVANS ANTIQUES, Waynesboro, Va. — Very rare 1-gallon stoneware pitcher signed "J. Eberly & Bro, Strasburg Va."



DOUG WYANT ANTIQUES, Cassopolis, Mich.

KEN & ROBIN PIKE, Nashua, N.H. — Early Nineteenth Century watercolor of a lady in a blue dress, with a handwritten history on back. The piece measures 11 3/4 inches wide by 13 3/4 inches long.

## CHIP CARVED FOLK ART HEART IN PERIOD RED PAINT AND ORIGINAL MIRROR

c.1870-80 - 18 x 17-1/2" - back has collage of vintage cards with flowers, children, etc. Purchased at heart of country 30 years ago.



GARTHOEFFNER GALLERY  
*Antiques*

Pat and Rich Garthoeffner  
ANTIQUES & ART

Lititz, Pa. 17543 | 717-581-0935 | 717-471-4694





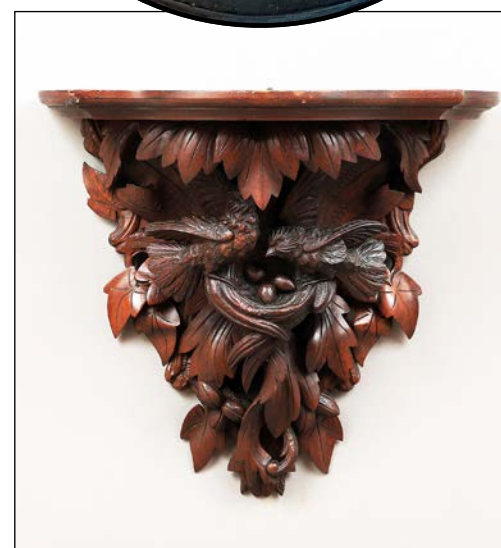


**DOUG WYANT ANTIQUES,**  
Cassopolis, Mich.

**SCOTT BASSOFF/SANDY JACOBS ANTIQUES,** Swampscott, Mass. — A large round cake pan with basket of fruit punched into top. A 15-inch width.



**KELLY KINZLE ANTIQUES,** New Oxford, Penn. — The butter churn "Cream de la Cream" is a whimsical piece of salt-glazed stoneware from New York with original lid, with "2" impressed on churn and lid from the Nineteenth Century, height 13 inches.



**JEFFREY TILLOU ANTIQUES,** Litchfield, Conn. — Carved shelf bracket, American, probably Pennsylvania, late Nineteenth Century, walnut. Excellent condition, minor wear. Wonderful vestiges of old varnish finish. This finely carved and executed shelf is laminated with several pieces. The exceptional carving is revealed with the depiction of two birds in a nest among foliage. Shelf: 17 inches high, 18 inches wide by 10 inches deep.



**JEFF & HOLLY NOORDSY ANTIQUES,** Cornwall, Vt. — Teal blue GI-43 Washington-Taylor quart.



nhada.org



## SAMUEL W. FORSYTHE ANTIQUES

Columbus, Ohio  
614-261-7489



Painted treenware drinking vessel  
or tankard, best surface.  
Late 18th or early 19th century.

Early 18th century William and  
Mary New England spice chest thought  
to have come from the Goff House  
in Rehoboth, Mass.

Mid 18th century linenfold blanket chest  
with incised decoration.



**BAKER & CO. ANTIQUES,**  
Delmar, N.Y. — A variety of  
Make Dos and Early Mends  
will be offered.



**COTTAGE + CAMP, Millerton, N.Y.** — Part of a large collection of  
memoryware.

#### **WHEN:**

Thursday, August 11, 2022, 10am – 7pm

Friday, August 12, 2022, 10am – 7pm

Saturday, August 13, 2022, 10am – 4pm

#### **WHERE:**

DoubleTree by Hilton  
700 Elm Street, Manchester, NH

#### **ADMISSION:**

Thursday, August 11: \$15.00

Friday, August 12 and Saturday, August 13: \$10.00

Free admission to anyone 30 and under with proper ID.

Free return visits to the show after initial admission.

#### **DIRECTIONS:**

From I-293 Northbound, exit 5 (Granite Street), then left on Elm.

From I-293 Southbound, Exit 6 (Amoskeag Bridge), then right on Elm.

[www.NHADA.org](http://www.NHADA.org)

## **COTTAGE + CAMP**

23 Main Street  
Millerton, NY

Instagram@cottageandcamp  
[cottagecamp.net](http://cottagecamp.net)







CHERRY GALLERY, Damariscotta, Maine — Pair of late Nineteenth Century three-dimensional folk art renderings of sporting scenes in shadowbox frames, 23 inches high by 29 inches wide, by 4 inches deep.



McCLARD SEGOTTA ANTIQUES, Weare, N.H. — Beautiful woman in a red Windsor chair. Period frame measures 32 by 26½ inches. Attributed to Gilbert Stuart, circa 1820.



KATE A. ALEX & CO., Warner, N.H. — Large and impressive eight-light chandelier. Swags of wood beads terminating on zinc bands, the largest being 26 inches in diameter. Height is 41 inches from top hanging loop to bottom wood finial. Wooden bobeche.

SAMUEL FORSYTH ANTIQUES, Columbus, Ohio — Large mocha tankard, Eighteenth Century.

Don't skip the great  
Americana revival meeting



John Chaski Inc., 302-448-6492  
john@johnchaski.com, @tiquesbro

American, 20th Century, Paint on  
tin with wooden frame, 25" x 9"





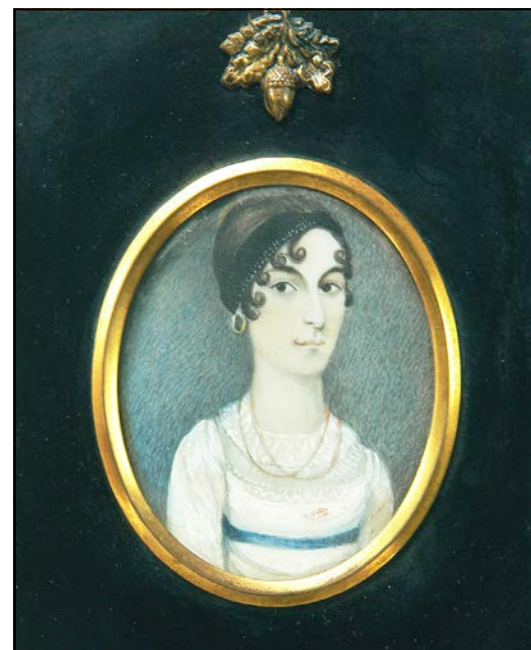
NANCY & GENE PRATT,  
Victor, N.Y. — Rare early  
Nineteenth Century painted  
New England music  
stand.

[nhada.org](http://nhada.org)

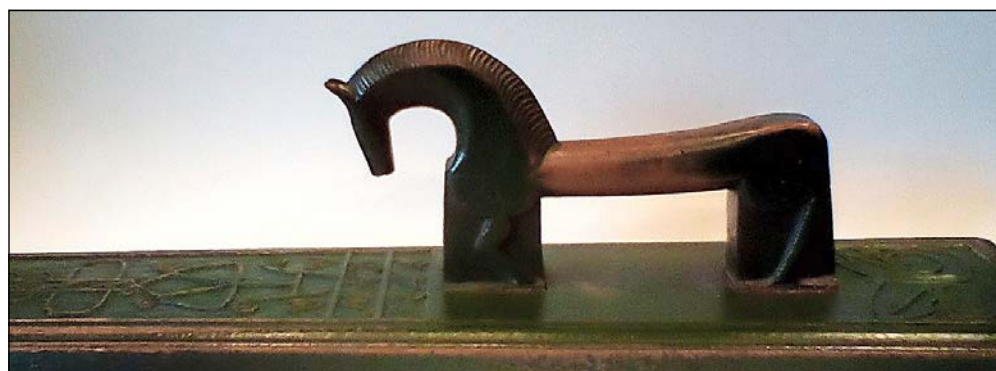
JEFF & HOLLY NOORDSY  
ANTIQUES, Cornwall, Vt.  
— Coastal Maine redware  
pitcher, likely potted by  
John Safford, circa 1840.



THOMAS RAWSON ANTIQUES,  
Clear Rapids, Iowa — Pair of  
folk carved women with legs in  
air bookends.



McCLARD SEGOTTA ANTIQUES, Weare,  
N.H. — American School folk portrait min-  
iature of lovely lady wearing a headband.  
Period frame measures 5½ by 4½ inches,  
circa 1790.



THOMAS RAWSON ANTIQUES, Clear Rapids, Iowa — Norwegian mangle board  
with carved horse & original green paint, dated 1646.

## Gold Pocket Watch With A Portrait Miniature Of General George Washington

A gold watch with a very fine portrait of George Washington on the reverse. This exquisite portrait is after an 1818 Rembrandt Peale painting of Washington in his General's uniform, commissioned by his aide-de-camp, Colonel Tilghman. The watch has an enamel face with a blue enamel and gilt border and a maker's mark from Bordeaux. The watch has a key wound, fusee movement. French, 18 karat. 2" diameter.



**Kelly Kinzle**

[www.kellykinzleantiques.com](http://www.kellykinzleantiques.com)

[kelly@kellykinzleantiques.com](mailto:kelly@kellykinzleantiques.com)

717-495-3395





**JK NEVIN ANTIQUES, Elverson, Penn. —** Early Nineteenth Century tin sconce with impressed decorative reflectors, and original wavy, bubbly glass front.



**SAMUEL FORSYTH ANTIQUES, Columbus, Ohio —** Early pine mirror illustrated in *The Pine Furniture of Early New England*, plate 177. Early Eighteenth Century, this mirror was in the Oliver Williams Collection which sold in 1966 at a Withington Auction in New Hampshire. Since then, it has remained in the same collection until purchased by me. 13 by 7½ inches.

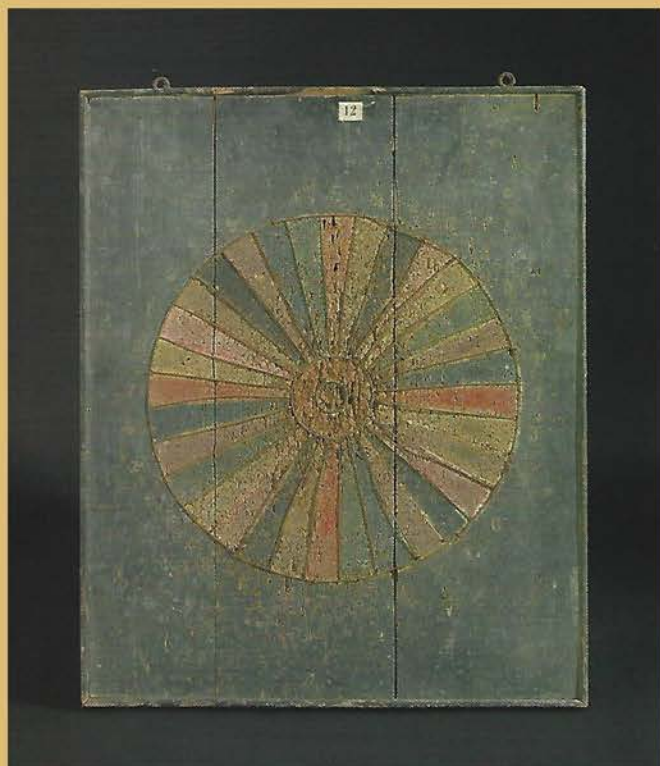


**McCLARD SEGOTTA ANTIQUES, Weare, N.H. —** Cutout silhouette by master silhouettist Augustin Edouart of George Combe, dated 1st May, 1830. Combe was an Irish lawyer, brewer and published phrenologist.

**JEFFREY TILLOU ANTIQUES, Litchfield, Conn. —** Pair of cast iron urn finials with flame tops and swags, American, mid-Nineteenth Century or possibly earlier. Great condition and patina. This iconic architectural form (1790-1815), as seen on this pair, probably adorned front-gate posts. The flame-top finial is attached to a post threaded down through the urn. Size is 31 inches high by 10 inches wide by 10 inches deep (on stand).



## BAKER & Co. ANTIQUES



### Unusual Target Game Board

Painted Wood and Wire  
English, c1890

Provenance:  
The Fighting Cocks, Rockham, West Sussex

Literature:  
Robert Young, *Folk Art*, Mitchell Beazley, London, October 1999, Illustrated and discussed page 121

View in Booth 60

Tom R. Baker  
Delmar, NY

tom@bakercoantiques.com  
831.818.8809



BAKERCoANTIQUES.COM







Interior at John H. Rogers Antiques, New London, N.H.



**STEVEN STILL  
ANTIQUES, Man-  
heim, Penn. —**  
Diminutive  
Pennsylvania  
paint-decorated  
dome lid box  
from the late  
Eighteenth or  
early Nineteenth  
Century.



**JEF & TERRI STEINGREBE, New London, N.H. —** Early Nineteenth Century carved architectural fan louvre retaining traces of original blue paint measures about 22 by 47 inches.

THE 65<sup>TH</sup> ANNUAL  
**New Hampshire  
Antiques Show**



**AUGUST 11-13, 2022**

**DoubleTree by Hilton  
Manchester, NH  
603.625.1000**

The New Hampshire Antiques Show, sponsored by New Hampshire Antiques Dealers Association, is now in its 65th year. Managed by a team of dedicated volunteers, The New Hampshire Antiques Show is considered "the best show of its kind in New England" (Maine Antique Digest). The 59 professional antiques dealers who exhibit at the show save merchandise throughout the year in order to ensure that the show maintains its longstanding reputation for "fresh-to-the-market" antiques.



c1840 black and gold stenciled box in original paint.  
12"w x 7"h x 7"d.



19thc carved wooden eagle in old gold paint.  
16"w x 6"h.



c1836 doll cradle in original green and red paint.  
19 1/2" long. With family history.

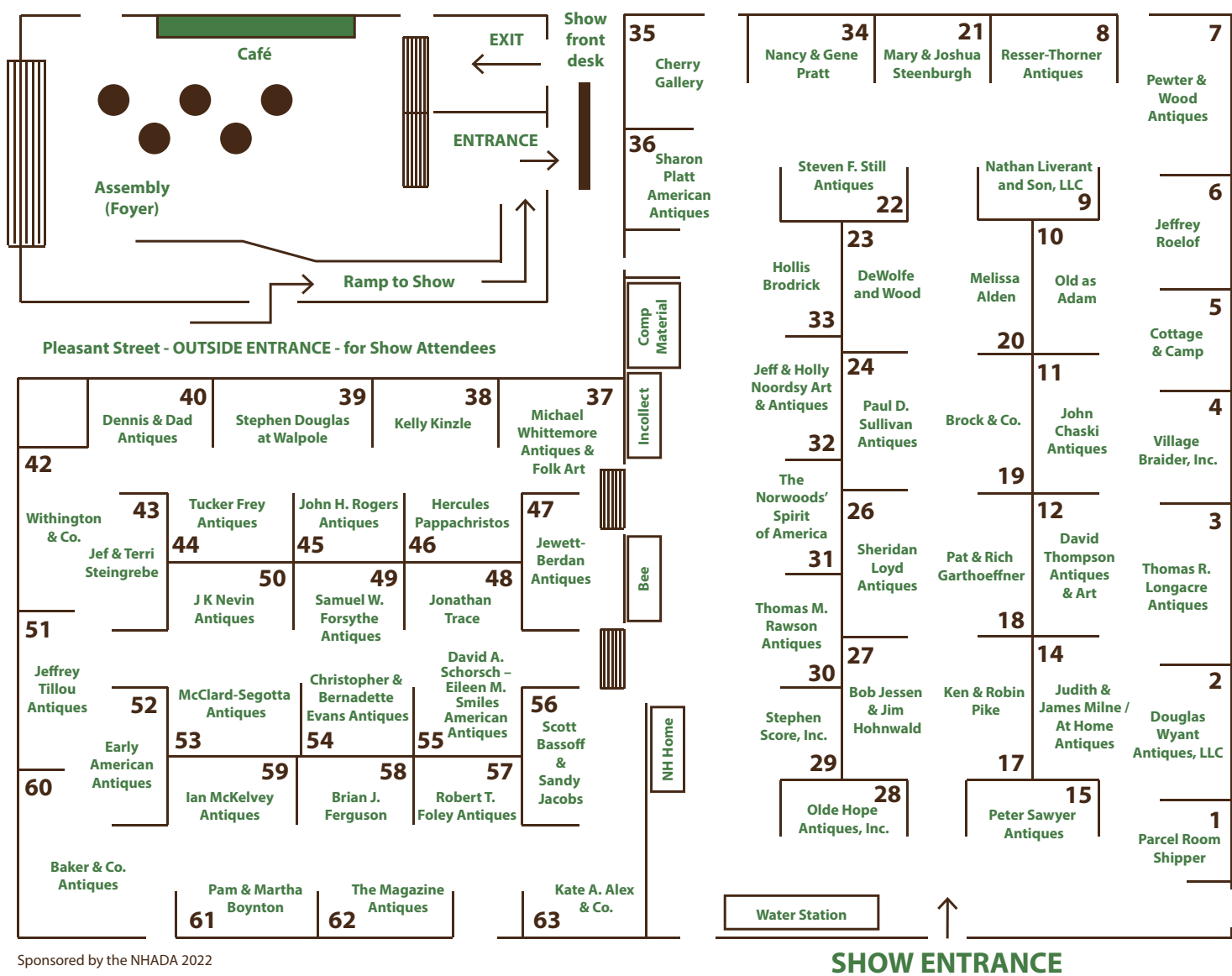
**KEN & ROBIN PIKE**

**43 Ayer Road, Nashua, NH 03064  
603-882-3367 • rrpcc101a@comcast.net**





2022 NHADA EXHIBITOR LIST



Sponsored by the NHADA 2022

Melissa Alden, Portsmouth, NH  
Kate A. Alex & Co., Warner, NH  
Baker & Co. Antiques, Lake George, NY  
Pam & Martha Boynton, Townsend, Mass  
Brock & Co., Concord, MA  
Hollis Brodrick, Portsmouth, NH  
John Chaski Antiques, Camden, DE  
Cherry Gallery, Damariscotta, ME  
Cottage & Camp, Millerton, NY  
Dennis & Dad Antiques, Fitzwilliam, NH  
DeWolfe and Wood, Alfred, ME  
Early American Antiques, Canfield, OH  
Christopher & Bernadette Evans Antiques, Waynesboro, VA  
Brian J. Ferguson, Swansea, MA  
Robert T. Foley Antiques, Gray, ME  
Samuel W. Forsythe Antiques, Columbus, OH  
Tucker Frey Antiques, Woodbury, CT  
Pat & Rich Garthoeffner, Lititz, PA  
Scott Bassoff and Sandy Jacobs, Swampscott, MA  
Bob Jessen & Jim Hohnwald, Fitzwilliam, NH  
Jewett-Berdan Antiques, Newcastle, ME  
Kelly Kinzle, New Oxford, PA  
Nathan Liverant and Son, LLC, Colchester, CT  
Thomas R. Longacre Antiques, Marlborough, NH  
Sheridan Loyd Antiques, St. Joseph, MO  
McClard-Segotta Antiques, Weare, NH  
Ian McKelvey Antiques, So Windham, CT  
Judith & James Milne/At Home Antiques, Kingston, NY  
J K Nevin Antiques, Elverson, PA

Booth 20  
Booth 63  
Booth 60  
Booth 61  
Booth 19  
Booth 33  
Booth 35  
Booth 40  
Booth 23  
Booth 52  
Booth 54  
Booth 58  
Booth 57  
Booth 49  
Booth 44  
Booth 18  
Booth 56  
Booth 27  
Booth 47  
Booth 38  
Booth 9  
Booth 26  
Booth 53  
Booth 59  
Booth 14  
Booth 50

Jeff & Holly Noordsy Art and Antiques, Cornwall, VT  
The Norwoods' Spirit of America, Timonium, MD  
Old as Adam, Providence, RI  
Olde Hope Antiques, Inc., New York, NY  
Hercules Pappachristos, Derry, NH  
Pewter & Wood Antiques, Enfield, NH  
Ken & Robin Pike, Nashua, NH  
Sharon Platt American Antiques, New Castle, NH  
Nancy & Gene Pratt, Victor, NY  
Thomas M. Rawson Antiques, Cedar Rapids, IA  
Resser-Thorner Antiques, Manchester, NH  
Jeffrey Roelof, Kalamazoo, MI  
John H. Rogers Antiques, New London, NH  
Peter Sawyer Antiques, Exeter, NH  
David A. Schorsch - Eileen M. Smiles American Antiques, Woodbury, CT  
Stephen Score, Inc., Boston, MA  
Mary & Joshua Steenburgh, Pike, NH  
Jef & Terri Steingrebe, New London, NH  
Stephen Douglas at Walpole, Walpole, NH  
Steven F. Still Antiques, Manheim, PA  
Paul D. Sullivan Antiques, Manchester, NH  
David Thompson Antiques & Art, So. Dennis, MA  
Jeffrey Tillou Antiques, Litchfield, CT  
Jonathan Trace, Portsmouth, NH  
Village Braider, Inc., Plymouth, MA  
Michael Whittemore Antiques & Folk Art, Punta Gorda, FL  
Withington & Co., York, ME  
Douglas Wyant Antiques, LLC, Cassopolis, MI

Booth 32  
Booth 31  
Booth 10  
Booth 28  
Booth 46  
Booth 7  
Booth 17  
Booth 36  
Booth 34  
Booth 30  
Booth 8  
Booth 6  
Booth 45  
Booth 15  
Booth 55  
Booth 29  
Booth 21  
Booth 43  
Booth 39  
Booth 22  
Booth 24  
Booth 12  
Booth 51  
Booth 48  
Booth 4  
Booth 37  
Booth 42  
Booth 2



@nhantiquesdealers  
#nhdealersshow

nhada.org

