



COYLE'S

Auction Inc.

TWO SESSION 37TH YEAR ANNIVERSARY AUCTION

Tuesday, May 24, 2022

VFW Hall, 123 Holliston St., Medway, MA

Session 1 – 2:30 PM Rugs & Curiosities

Session 2 – 5:00 PM Estates Auction

PREVIEWS

Open! Mon., May 23rd - 9:00 AM – 6:00 PM

Tues., May 24th - 9:00 AM to ½ hr. before sales

SEAT RESERVATIONS welcome

Call or text 774-571-8263 or email us at: coylesauction@verizon.net

www.coylesauction.com

In celebration of our 37th year anniversary in the auction business we are pleased to offer a Two Session Antique Estates Auction featuring fine quality selection of Antique American, English, French style furniture, fine porcelain and pottery, artwork, sterling, fine jewelry, lamps, bronzes and much more drawn from a fine Gloucester home, 2 Lexington homes, Milton, Norwood, Newton and others with selected additions. Many fresh to the market offerings in both sessions. Items arriving daily. 350 + choice lots. Grateful thanks to our long time customers and consignors for all your support over these many years.



Pair of Chinese 16 ½" vases



New England antique figured fan carved maple flat top highboy with slender ball and claw legs



Oil on canvas
"Buggy Ride" Anthony Thieme



14k rose & yellow gold Emerald and Diamond solitaire ring with approx. 6.72 carat est. wt. Pear Shaped Natural Emerald w/ 6 round small diamonds



Unusual Antique Federal mahogany marble top pier table



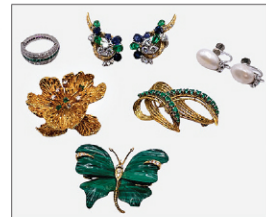
Selection of fine porcelain figural groupings including Meissen



Sextant (Alexander Cairns) in case
Spencer & Co



Antique two part
campaign chest



Selection of fine Estate jewelry to include Gold, platinum, diamonds, emeralds and sapphire gemstones and more.



Antique mahogany chest-on-chest with carved ball and claw feet



Period Queen Anne birdcage tilt top candlestand



Pair of Antique French Empire armchairs



Boston Classical antique sewing table w/nice fabric bag



Art glass including Tiffany



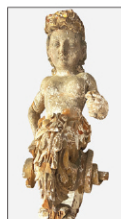
Louis XIV style leather carved armchair



Chinese porcelain including 24" Chinese vase



Unusual Shaker style step back desk/cupboard (maple and other woods)



Carved wood figural putti/ship's head polychrome figure



Antique Salem Sheraton mahogany sofa



2 early Botanical lounovalbanjoprints Plate # 282 & 276 Basilius Besler



Marine oil on canvas signed H. Storm '05



3 unusual Tansu style chests of various styles incl. red lacquered example



19th C Chinese marble top console table



Chinese lamp with roosters



Session 1 at 2:30 PM – Oriental Rugs and Estate Curiosities Auction including old room size Oushak rug, etc



Chinese porcelain 14" bowl



Painting of lady by Louis-Gabriel-Eugene Isabey (9 ½" x 7 ½")



Cherry oval dining table by Stephen Swift of Nantucket



Lacquered antique Asian motif mirror



Luscomb – Boston banjo



6 Stickley cherry Windsor dining chairs



Vitra Jean Prouve Cite lounge chair 2002

SESSION 1 AT 2:30

10+ Oriental Rugs, 3 early leatherbound books incl 1 Voyage to the Hebrides, 2 globes, chow iron doorstop, Simplex oak time recording clock, Several Costume jewelry lots incl Miriam Haskell "pearl" necklace, Trifari, etc. and more.

SESSION 2 AT 5:00 PM

FURNITURE: Good New England antique figured fan carved maple flat top highboy with slender ball and claw legs, handsome antique mahogany chest-on-chest carved ball and claw feet, antique mahogany Federal marble top pier table, antique 2 piece campaign chest w/ brass hardware, good antique Queen Anne tilt top candlestand with birdcage, antique Salem Sheraton mahogany sofa, Boston Classical antique sewing table w/nice fabric bag, unusual Shaker style step back desk/cupboard, pr French Empire armchairs, 3 unusual Tansu style chests of various styles incl. red lacquered example, decorative green lacquered Asian chest/faux marble top, Louis XIV style leather carved armchair, Vitra Jean Prouve Cite lounge chair 2002, late 19thC library table /stylized dolphins, red Japanese lacquered mirror, 2 pairs of unusual Mid-Century style sm folding chairs, carved wood figural putti/ship's head polychrome figure, rope turned antique work table, 2 drawer Federal stand, small Boston deck top chest/round ft, antique tiger maple 4 post bed, set of 6 Hepplewhite NH dining chairs, sm. Lockside lingerie chest w/brass mounts, pr Mid-Century walnut collector cabinets, beautiful cherry oval dining table by Stephen Swift of Nantucket, set of 6 cherry Stickley Windsor dining chairs, 2 Conant and Ball Windsor maple armchairs, antique inlaid mahogany

sideboard w/reeded legs (as found), 2 hand crafted paint decorated cupboards by David Marsh, oak barrister bookcase, Decorated cabinet (Gauke Bootsma), Asian motif furniture, marquetry inlaid tilt top table, sm camphorwood chest, and much more.

ITEMS OF SPECIAL INTEREST: Luscomb Banjo (Boston), Sextant (Alexander Cairns) in case Spencer & Co., Walker's Excelsior ship-lot in box, 28" Handwerck Simon Halbig bisque head doll, "Whizz Bang" vintage 1 cent pin ball machine, 2 Beaded W. African belts, lg polished fossil, and more.

ACCESSORIES: Very fine porcelain figural groups including Meissen, French, etc., Chinese 14" bowl, pair of Chinese 16 ½" vases, Chinese lamp with roosters, 24" Chinese vase, 24" Asian blue and white umbrella stand w/peacocks, lot of figural Venetian glass vases etc., 4 sm. Art glass pieces sgnd LCT, Rosenthal porcelain kneeling female nude by Fritz Klimsch, Pr Delft lamps, pr Chinese import yellow ground lamps, pr Bohemian overshot vases, nice lg lot of Plique-a-jour cloisonne, Dedham rabbit plate, pr Chinese porcelain decorated table lamps, Japanese carved figural fragment of court gentleman, 2 half hull wall plaques incl USS Independence, crystal, pottery, lamps, and fine china and porcelain, Royal Copenhagen figures, Orientalia and much more.

JEWELRY: Beautiful 14k rose and yellow gold Emerald and Diamond solitaire ring with approx. 6.72 carat est. wt. Pear Shaped Natural Emerald w/ 6 round small diamonds, 14k gold, diamond, sapphire, and emerald earrings, French 18k gold & diamond malachite

butterfly brooch, 18k SWL twisted brooch w/gemstones, 18k diamond and emerald floral brooch, 14k diamond & pearl earrings, platinum channel swing ring with diamonds and gemstones, gold misc lots, and several more lots of gold, diamonds, gemstones etc. just received not yet catalogued, sterling jewelry etc.

STERLING: Sterling meat platter, lg lot 800 silver flatware, several sterling bag lots, 20 pcs sterl flatware Rosepoint, and more.

ARTWORK: Oil on canvas Anthony Thieme "Buggy Ride" 29x26, o/c full masted ship w/ sailboats in background 7.5 x 14.5, o/c Racing Yacht #5 signed H. Storm '05 19 x 29.5, Painting of lady by Louis-Gabriel-Eugene Isabey 9.5 x 7.5, sm painting Westminster Abbey & Tower Bridge E.M. Eyre, 2 early Botanical prints Plate # 282 & 276 Basilius Besler, Carlton Theodore Chapman river landscape o/c 24x36, w/c by Lilian Greene, Pr. of Shodu Kawarazaki prints, early engravings, Alexander Calder lithograph Flying Colors Collection, painting of game still life 24x 33, HRV style o/c, primitive landscape w/ deer, Valfred Thelin watercolors, 6 miniature portraits, w/c woman Mairovich, Robert Kelly monograph A/P, Victor Pasmore lithograph, Nautical prints and signed and unsigned artwork.

TERMS: Left bids and absentee bids welcome. M. Coyle Auction Lic 2369, 15% Buyer's Premium – Cash/check/MC&Visa 508-733-6868, No Food will be offered – www.coylesauction.com

DIRECTIONS: Sale held at the VFW Post 1526, 123 Holliston St., Medway, MA off Route 109

Email: coylesauction@verizon.net