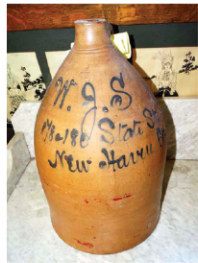


BILL SPICER AUCTION

WEDNESDAY, March 30, 2022 • 5pm • Viewing at noon

Washington Lodge Masonic Temple • 1515 Ten Rod Rd, North Kingstown, RI

For more pictures see auctionzip.com (auctioneer # 2954) • **Day of auction 401 265-5104**



1903 "William J. Sheehan Liquor" jug



oil/c by Ernest Principato
41 x 24



oil/c by Henry Eddy,
landscape 41 x 30



Kashan rug
11'8" x 8'5"



seascape by Colin C. Cooper
16 x 19 1/2



oil/b Bermuda scene by
C. Gordon Harris, 12 x 14



3-drawer blanket
chest



Monroe cat boat, 10'



signed "Mickey Mantle"
baseball



2 vintage crow decoys



4 Bieber decoys



license late collection



Rookwood bowl
"Katara" #42713



oil/b by Laurence Sisson
59 x 39 1/2



oil/b by L. Sisson, 57 x 40



decoy by Martin D. Collins



Stickley Brandt bench



native papooses



oil/c "Shipwreck" by
G. W. Whitaker, 4 1/4 x 6



swing handle
basket by Rouse
Matterson



excellent cut glass items



German WWII helmet



saw tooth bayonet
and accessories



2 Orvis reels and
Orvis/Brightwater rods



1948 Old Towne
"A Rowing Canoe" 7'4"



bronze deer by
A. Phimsister
Proctor, 91

FURNITURE: period corner cupboard; early 3-drawer blanket chest; period wing-back chair; early folding game table; period lowboy; English 3-drawer stand; tavern table; Mission-Oak bookcase; blanket box; sea chest; 2-drawer sewing stand; 2-drawer and one-drawer blanket chests; 1/2 round period table; 19th cent. adjustable stool; dough box; marble top table; slant top desk; German Grandfather clock; 4 period Windsor chairs; Stickley Brandt bench; period corner chair; period mirror; Oriental rugs (8'x 63", 143" x 93", 5' x 3'6", 5' x 7', 11'8" x 8'5", two 12' x 8') 2 runners (16' x 31", 14' x 3');
MISC bronze bust "Big Beaver"; bronze deer "Phimsister Proctor, 91"; bronze bear by A. Humphrey, 1912; metal sculpture bust by Konzal; 1948 Old Towne, 7'x4" "A Rowing Canoe" in excellent condition; 10' Monroe Cat Boat in excellent condition; YEI Navaho rug; 2 Acoma N.M. pots by Sarah Garcia; wooden Ghee pot;

2 native Papooses; Indian basket; swing handle basket by Rouse Matterson; inlaid cuckoo clock; many crocks with blue designs; F. B. Norton crock; New Haven Conn. crock; "Power & Edmond" crock; handled pantry box; 1903 jug "William J. Sheehan Liquor" Wholesaler; 12 paper weights; approx 10 slag glass lamps; 2 boxes of vintage clothing; push-up candlesticks; hog scrapers; many oil lamps; Cooper pans; wooden masks; pond boat; pr period Boston andirons; fireplace insert; fireplace trammals; European flax winder; metal horse; large trencher; 1834 sampler by Harriet Shepard; ship's port hole; signed "Mickey Mantle" baseball; T.S. & J.D. Negus barometer; 2 Cinnabar Chinese boxes; over 100 newer license plates; cast iron frog; pr cast iron cat bookends; Orvis fly rods and reels; Fenwick Granger favorite fly rod; Scott Brightwater fly rod;

GLASS/POTTERY: Emerald green overlay bowl; 1929 Steuben center bowl; cobalt blue "Taza" Pairpoint footed bowl; cut glass cruet with sterling stopper; signed Libby cut glass pedestal perfume; American cut crystal compote; amber American cut glass vase; 8 cut glass knife rests; large cut glass floral bowl; 9" cut glass bowl "Strawberry Diamond" pattern; 8 Amberina tumblers; 2 Pairpoint 7 1/2" vases; 3pc Steuben glasses; Mt. Washington vases and bowls; signed Rookwood bowl "Katara Shirayamadani" #42713; Kutani bowl; 2 flow blue platters; soft paste dishes; 82 pc Spode set of dishes; Staffordshire figures;
DECOYS: Martin D Collins decoy; 1990 Charles Jobs decoy; W.E.R. shore bird; 2 Coot Garton green-wing teal decoys; Hurley Conklin merganser decoy; 4 Bieber decoys; 2 crow decoys; 3 Bernard Hupman decoys;
STERLING/JEWELRY/COINS: Illinois sterling pocket watch;
EPHEMERA/BOOKS: 1837 "Indian Bio. of American Natives" 2 vols; 1852 Daguerreotype of man & 2 girls; postcards; 1666 "The London Gazette" paper;

MILITARY/TOOLS: WWII German helmet; WWII entrenching tool; sawtooth bayonet & accessories; 3 boxes of tools; adz; wooden carpenter's planes; 3 boxes of early hardware; 2 boxes of moulding planes; 3 wooden joiners;
PAINTINGS: two 8x10 pastels by J. S. Bower; oil/c landscape by Henry Eddy 41x40; oil/c by John Laughlin 20x25; watercolor ship by Louis K. Harlow 23x22; oil/b by Bernard Corey 10x14; oil/b by Marinko 16x12; oil/c still life by C. Gordon Harris 24x20; oil/c Bermuda scene by C. Gordon Harris 12x14; oil/b Wickford Harbor by C. Gordon Harris; watercolor by S. R. Chaffee; oil/c by Frank Fowler 15x12; oil/c "Shipwreck" by G. W. Whitaker 4 1/4 x 6; still life by G. W. Whitaker 7x11; oil/b still life from Ella, 1871, 7 1/2 x 9 1/4; oil/b

seascape by L. Sisson 57x40; oil/b seascape by Laurence Sisson 59x39 1/2; seascape by Colin C. Cooper, 16x19 1/2; oil/c house by A. D. Lana 25x20; oil/c by T. Bailey; oil/c by Ernest Principato 41x24; 3 oils/b by Ernest Principato; oil/c Yosemite Park, 1860's; 2 oils by Stacy Tolman; 2 still lifes by J. Hibert; watercolor by Angela O'Leary 7x5; watercolor by John Hare; 1800's oil/c portrait of a woman; pen & ink by Chimot; 2 oils by Ingeborg Christensen; 2 oils by Blumbers; etching by Picasso; oil/b by Curaro; dry point 1937 of a woman; oil/c by A. Tellier; oil/c by L. Tefft; drawings by C. J. Nordell, 1901; watercolor by H. Rabingwitz; oil/b by John Banks; painting by C. Gadsby; oil/c by Capt. B. F. Foulke; oil/b Arab scene; 3 paintings by Gino C. Conti; painting by W. F. Brown; painting by A. Dazquez; painting by H. A. M.; pencil drawing by Aaron Shattuck; Chinese reverse painting of rabbit with toy; 3 Currier & Ives pictures;
TOYS: "Complete Miniature Mobil Arm" game; 5 Structo trucks; Buddy L truck; 1894 BB gun; 2 cast iron horse-drawn fire engines;

Cash. RI or known check only. Mastercard/Visa.

15% buyer's premium - 3% discount cash, check or debit
DEALERS - BRING PROOF OF TAX NUMBER

BILL SPICER AUCTIONEER/APPRaiser
276 Widow Sweets Rd., Exeter, R.I. 02822 401 265-5104

DIRECTIONS: FROM CT, take 95 north to exit 5A (102 S). follow 102 S, cross over Rt 3 and continue on 102 for approx 9 mi. Temple is on left.
FROM MASS: take 95 south to exit 9 (Rt 4), follow Rt 4 to exit 3B (102 N). stay on 102 for 1/4 mile. Temple is on right.