

AMERICANA AUCTIONS

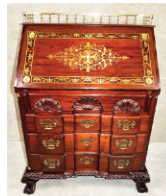
380 Winthrop Street, Rehoboth MA 02769 | 508-771-1722 or 508-223-9471 • www.americana-auction.com

FINE NAUTICAL & ESTATES AUCTION

Sunday, April 3rd at 11am

Preview: **Live** in Rehoboth: April 1st & 2nd (Fri/Sat.) 10-4 / Sun. 9-11 & by appt.

❖ **Live!** in Rehoboth & Online via Liveauctioneers.com & Invaluable.com & Bidsquare.com ❖



Fine inlaid desk



3 Naval paintings after Chappell



Carved Beckenhaupt whales (6)



Many lots of sterling

Fresh to market items from Mass. & Islands homes



Art Deco lamp



Mason Premier decoy



Warren Sheppard painting



Many scrimshaw teeth



Fine antique rugs



Fine nautical paintings



Emile Gruppe painting



Bryant Chapin



Gus Stickley desk



Fine gold jewelry



Set 10 sterling dinner plates



Sailor Valentines (4)



Faberge Russian silver purse



David Williams Newport clock

SILVER & JEWELRY: 60+ lots! Authentic Faberge silver guilloche & diamond coin purse sgd. Henrik Wigstrom; Superb 1860 Elkington 6 pc tea set (160 oz) & Caldwell Art Deco 6 pc. set, both w/kettles; 10 Whiting dinner plates #2194 (145 oz) & Pr. vegetable bowls #3298; Classical teapot by Fletcher & Gardiner of Phila C. 1830; 8 sterling flatware sets – Wallace “Grand Baroque”, Dom & Haff set for 12 “Shell”, Gorham “Old French”, Towle “French Provincial”, Oneida “Mansion House”, Heirloom “Young Love”, International “Royal Danish”, Lunt “American Victorian”; Birks 9” bowl; Tiffany; Gorham 1890 pitcher & cups & “Lancaster Rose” ladle; 2 Portuguese 833 Holy Spirit crowns w/scepters; 13” desk frame; Much hollowware; Coin silver & flatware lots; **JEWELRY:** 3 large carat diamond rings (\$12,500 & \$5800 retail appraisals); Palladium 1.3 ct. diamond ring; 18k gold pendant w/Roman coin ca 211 BC (COA); Emerald & diamond cocktail ring; Large shell cameo w/gold frame; Micro-mosaic pendant & 3 pc. pietra dura suite; Unusual 14k & sapphire “clock dial” pendant; 18k floriform gemstone ring atr. Chanel; Tiffany 18k large earrings; several lots of rings, bracelets, necklaces, etc.

FINE ART: Still life paintings - Strawberries by Bryant Chapin, Roses by JC Spencer & Onions by Julia B. Albright; Emile Gruppe – covered bridge; Scott Powers 2008 – sultry woman; Lloyd L. Goff – Manhattan; Tom Nicholas NA – Prague; KPM 10” porcelain plaque Vestal Virgin; A. Barone 1907; AP Hill – Long Island; A. Benton Gude; Joan C. Marsh – Provincetown harbor; Frank Strazula Jr; Fine mini portraits on ivory; HH Brooks; Percy Albee; Frank Simons; **Nautical Art:** 3 large circa 1900 portraits of US Naval Commanders on ships after Alonzo Chappell – John Paul Jones, Oliver H. Perry & Wm. Bainbridge; Warren Sheppard – Large panoramic “Lost Fleet of Knights Templar”; 5 Chinese Export oil paintings – Hong Kong harbor & “Iron Duke” ship; R. Kempton “Whaleship Lunar”; Edwin Pegrum; R. Santos “Chasing Bowheads in Arctic”; Kolene Spicher – whaling scenes; T. Pujol – 1803 ships; W. Clark Noble; H. Davey – British ship; Margie Collis (2); Sylva Fernandes (2); HD Hig-

gins; Montgolfier Paris 1783 mini painting w/balloon; Litho – Sperm Whaling & Varieties 1870. **Nautucket & Martha’s Vineyard Art:** Wendell Macy – 1746 Nantucket windmill; David Lazarus (3); JB Reid (2); DR Beers (2); Ruth Sutton; Maggie Meredith; Reginald Nickerson – Nantucket ship; Perry Ricciardulli; Anita Coffin Dammin; Primitive oil Cliff Rd. Nantucket; Gay Head cliffs by Denys Wortman Jr. & Frank F. Frederick. Also - 2 busts sgd. Felix DeWeldon. **PRINTS:** Lithograph by T. Hart Benton “Kaw Valley 1951”; Huge antique poster “L’Enfant du Regiment” by Kauffmann & Rouff of Paris; Mass. military camp at Dorchester 1849 by Tappin & Bradford; Yoshitoshi Japanese woodblock;

NAUTICAL ITEMS: Ship’s binnacle by James Morton, Sunderland; Brass ship’s telegraph; 3 antique ship’s wheels; 2 ship’s medical boxes - Turakina “Laudanum” & Viceroy of India “Heroin & Cocaine”; 19” pulley block; Models incl antique 5 ft. laminated ½ hull, shadowbox & other models; 6 large whale plaques sgd Ken Beckenhaupt; Wood bowsprit of lady; Robert Innis dolphin; 1852 ship log; Boat rudder sign “Nautical Antiques”; Pair RMS Queen Eliz. Deck chairs; Weathervane of captain w/telescope; 2 harpoons; Sunderland creamware jugs w/ships; Several scrimshaw whale teeth & bookends; 4 Sailor shell Valentines, one double; 3 Nantucket basket purses, 2 by John. Keane; Carved Inuit items – 2 scrimshaw walrus tusks, one sgd HB Slwooko; Oosik; Mini ivory globe of earth; 15” whale bone of seal; Pie crimpers; Sailor made boxes & tools; Whale bone implements, fids, needles, mini mirror; Formalized whale eardrum; Ship lanterns & Chelsea clocks; USS Tennessee box; Alarm rattles; 3 Ship compasses; Fine whalebone canes;

GLASS & CHINA & ASIAN: Baccarat cut crystal & gilt decanters & pitchers sgd LeRosey; Steuben 12” colored candlesticks & 32 pcs. yellow cut stemware; 5 Sunderland creamware pink luster jugs ca 1840; Arts & Crafts pottery – Rookwood & more; ASIAN: Antique Chinese vases, covered jars, dinnerware, oxblood vases, Qianlong teaware; Pair Fitzhugh hot water plates; Japanese signed dragon bowl; Bronze buddha & teapot; Early Arabic sundial;

FURNITURE & RUGS: Many period pcs – 3 highboys, chests, desks, 3 secretaries, QA chest on frame, several beds, English captain’s desk, more; Superb inlaid 19th C. Chippendale slant lid desk; Fine 7 ft inlaid breakfast, 8 Georgian dine chairs & band inlaid table w/2 leaves (mint) by Lloyd Buxton; Classical Empire small chest; Pr. Kittinger CW-12 wing chairs; Camphor Chinese chest w/genre scenes; 3 seaman’s chests; Victorian 5 ft round dine table w/5 leaves. **ARTS & CRAFTS:** Gus Stickley Desk & Morris chair; L&JG Stickley Morris & nursing rocker; JM Young settee; 3 bookstands; Desk w/ copper mounts & trestle table; Tabetore; Dine table w/pair benches; Crest floor lamp; Motawi Tileworks picture; 2 Rookwood vases & 2 art pottery vases, one signed. **RUGS:** About 30 vintage & antique carpets & scatter rugs of all types – 2 Lesghi Shirvan antique & 4 Kazak; Fine Bidjar; Ivory & red Sarouk rm sizes; NW Persian runners; 3 Heriz; Serapi; Serab; Lavar Kirman; Pictorial; Elaborate Persian w/figural medallion & animals, etc.

CLOCKS & MISC: Three period tall clocks – Newport RI signed David Williams ca 1815, Mahogany w/ship dial, & English floral & inlaid oak; Rare French shelf clock signed Etienne Maxant w/armillary finial; 3 banjo clocks – Chelsea w/naval battle & 2 antique; French ormolu portico clock w/dome; Chelsea & Seth Thomas ship’s clocks. **MISC:** 19th c. Tlingit Native American drum from Alaska; Several Inuit items incl. snow goggles & child’s ulu knife & figures; Decoys incl. Mason Premier Grade & 1900 Beetlehead Yellowlegs; Fine ivory Chinese chess set; Weathervanes – zinc full body rooster & sheet metal captain w/telescope; Early Roman coin in gold pendant w/COA; Old toys & Am. Flyer trains. **KNIVES:** Includes Case XX bowie, 2 California bowies – Wostenholm IXL & Jonathan Crookes; Wostenholm Sheffield Spanish notch; Katar silver damascene tiger knife; 8 good whalebone canes & sword cane; Several lots of antique Daguerreotypes, tintypes, and early photography including Civil War soldiers & cdv’s & rare stamped BRADY 1854 case; Mini block planes, signed; 18th C. large burlwood bowl; more