

Winter Associates

Auctioneers & Appraisers

January 24th at 5:30PM

Snow Date: January 25th, call to confirm

**Paintings; Prints; Clocks; Early Documents & Maps;
Silver; Jewelry; Coins; American & Continental
Furnishings; Garden; Asian; Textiles; Rugs, etc.**

View catalog online as of Jan. 14th at www.AuctionsAppraisers.com

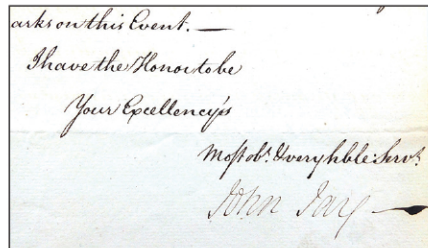
Previews:

Friday, Jan. 21st, 12-4 pm

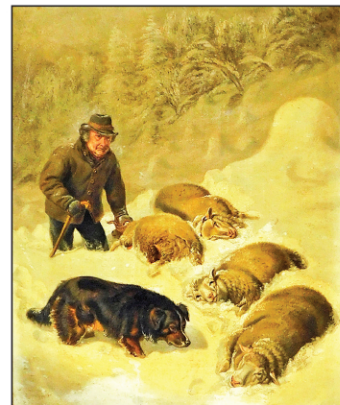
Sunday, Jan. 23rd, 2-4 pm

Monday Jan. 24th, 12-5pm

or by appointment.



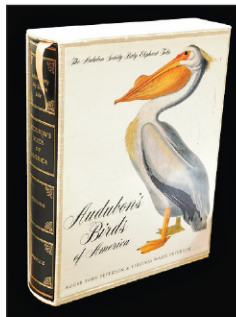
Signed 18th C. documents discussing Revolutionary War, etc.



A. F. Tait, oil on panel, 16" x 13"
"Snowed In- After the Blizzard"



'800' trinket box



Peterson 1981



Renoir (Stella 39)



Portuguese .833



Poertzel bronze, 31" l.



WWI Germany/ Prussia



14K incl. 30" l.



Embroidered 1884



Nathan Margolis desk; 20th C. chairs



Table c. 1800; 20th C. chairs



Lacquered & gilt



David Wood c. 1800 & other clocks



David Wood c. 1800 & other clocks



London 1774 sterling



M. Hammer, 10" l.



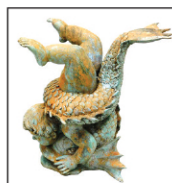
Highboy, shell-carved



Painted iron, 33" h.



Putti & dolphin, 18" h.



Putti & dolphin, 18" h.



Refectory table 132" l.; Chinese Export



F. E. Banning; Convex mirror; 24" Vane

PAINTINGS: Arthur Fitzwilliam Tait, oil on panel, "Snowed In- After the Blizzard", 1878, 16" h. Recorded as no. 78.16 in "Arthur Fitzwilliam Tait, Artist in the Adirondacks" by W. H. Cadbury with a checklist by Henry Marsh; W.M. Prior, 19th C. oil on panel; Amedee Boucher; Thomas Casilaer Cole (2); Eric Cederberg; W. Phillip Vinton Clayton; Attributed to Camille Delanare; Boris Deutsch; Sue May Gailey Wescott Gill; Fritz Jacobsen; Leander Leitner (2); Martha Mayers; Attributed John Austin Sands Monks; Jonathan Scoville; Robert Solotaire; Attributed Anthony Springer; Herbert A. Steinke (2); John A. Vickers; Sterling Strauser; V. Worley; along with a Louis Orr pastel and a number of unsigned 19th C. oil on canvas, etc.

PRINTS: Andrew F. Affleck; John Taylor Arms; Daniel Serra-Badue; Stanley Boxer; Alice Standish Buell; Armand Coussens (3); André Derain; Werner Drewes; Richard Earloom; Kerr Eby; William A. Eskey; Johnny Friedlander; Gordon Hope Grant; Helen Haselton; Luigi Kasimir; Robert Lynn Lambdin; Nat Lowell; Roger Tory Peterson; Giovanni Pisello; Pierre-Auguste Renoir "Claude Renier - La tete baissée", lithograph, 1904, Deltail, Stella 39, only state, Ref: Mauret, plate 14, Ed: 1000; Grant Reynard; Diego Rivera, "La Revolution", off-set lithograph, c. 1930; Lucie Rivet; Margery Ryerson; Luigi Schiavonetti; Anton Schutz (2); Prideaux John Selby (3); Raphael Soyer; Nick Stavides; George T. Tobin; Henri de Toulouse-Lautrec, "La Revue blanche", litho, 1895, Ref: Mauret, p. 134, Ed: 1000; Gaston Ventrillon; George Virtue "Portrait of James Craggs, Sr. Esq. - Postmaster General of Great Britain", engraving, 1728, with a letter signed "J Craggs" and dated August 14th 1719; Bjorn Winblad; Samuel Johnson Woolf; Bernardo Zilotti, etc.

CLOCKS: David Wood, Massachusetts Federal cherry inlaid tall case clock, circa 1800-1815, Newburyport, Massachusetts, 84" h.; American Chippendale tall case clock, c. 1780, dial signed Osborne Jr., 100" h.; Victorian wall clock by Carl Werner, 34" h.; Pillar and Scroll Shelf Clock with Erastus Hodges, Torrington, Conn label, 26" h.; 20th C. Federal Style Wall Clock with Grow and Cuttle Inc. from Chicago IL, eight day brass dial and movement, 28" h.; English clock by Burton, Leicester, 19th C., 13" h..

EARLY DOCUMENTS: Revolutionary War Era Documents: Jay, John. Letter, Signed to "His Excellency, the President of New Hampshire". (Probably secretarial) "In obedience to the orders of Congress... advising that Algiers has declared war against the United States."; Stirling, Lord, William Alexander. Autograph Letter, Signed, to Governor George Clinton of New York, dated 1781, informs Governor Clinton that Admiral de Grasse, with "28 sail of the line" arrived in Chesapeake Bay... landed 300 men on the south side of the James River in order to form a junction with the Marquis de Lafayette.."; Amherst, Jeffrey. Document, probably secretarial, signed by Amherst to "Hon(ora)ble Lt. Governor Hamilton. New York, 22 March, 1761. "Requisition for a further aid of troops from the several Provinces..." requesting 300 men."; Rutledge, John. Autograph Document, signed. (Warrant for the Arrest of Richard Bland) "King George 111. ... Command you without delay to attach the body of Richard Bland..." Signed J. Rutledge, 12 May 1762 and Charles Shinner, chief justice of South Carolina. Docketed "Rutledge" with a note "I appear for the Def't (defendant) in this action." Egerton Leigh 17 June 1762. Rutledge was a delegate to the first

Continental Congress, elected Governor of South Carolina in 1779 and supported the war against the British; Other 18th C. Documents: John Marshall (4th Chief Justice of the U.S., 1801-1835), Autograph Letter, Signed. (ALs) One page, Richmond, March 27, 1787 to Sir Peyton Skipworth regarding a judgment in a case; tooled leather "Carte de Visite" album containing photographs and illustrations of important Civil War figures for both the north and south sides, including: Grant, Sherman, Davis, Lee, Jackson, Stuart, Lincoln, etc.; Taney, Roger B. (Fifth Chief Justice of the United States) Autograph Letter, dated March 8, 1856. A family letter; Story, Joseph. (Associate Justice of the Supreme Court). Autograph Letter, 1827; along with 50+ other pieces of American historical ephemera.

MAPS: A dozen handsomely framed maps of Europe dating from 1640 to mid 19th C., cartographers include Homann Erben, Abraham Ortelius, J. N. Bellin, Pierre Du Val, Johannes Janssonius, Willem & Joan Blaeu, Isaak Tirion, John Speed, etc.

SILVER: Ornate five piece tea service, .833, Porto, Portugal circa 1887- 1937; English sterling silver epergne centerpiece by Thomas Pitts, London, 1774; Baldwin Gardiner, American, 19th C., teapot and large sugar or waste pot, other early American hollow ware, ladles, generous lots of flatware many Philadelphia and New England makers, etc.; Kenilworth Tea Service by International; Lunt flatware, "English Shell" 60 pcs.; Towle "Chippendale" 36 pcs.; Ornate flatware by Tiffany, Gorham and others; Marius Hammer pair of vermeil spoons; souvenir spoons, vanity pieces, chatelaine, candlesticks; Chinese Export card case, Russian cup; etc.

JEWELRY: 18K Charm bracelet; 14K Victorian style antique enameled necklace 14K neck chain 30" long 14K Pendant with 20" Chain; 14K Aquamarine Ring, emerald cut approx 13.00 ct.; 14k and 18k rings set with diamonds; other gold rings, earrings, necklaces some with colored gemstones; pocket watches; signed costume jewelry in generous lots, etc.

COINS: Lot of approx. \$72.50 face value of silver quarters; Lot of 163 US 90% silver half dollars; 1896 Silver Certificate. Educational note. Freidberg-248. Very Good-8.; Collection of over 30 US-type and common world coins, including 1814 large Cent, extremely fine details but environmentally damaged; 1853 US Half Cent, Very Fine details, reverse cleaned; 1902 \$1, Almost Uncirculated; four US large cents, some with damage; collection of nine Liberty nickels, two 2 cent pieces, one 1905 Indian Head cent, one 1909 Lincoln cent, one 1916 Buffalo nickel, one 1913 Barber dime, and one 1883 dime made into a love token, holed and looped; Lot of US silver dimes, approx. \$14.90 face value.; Five circulated, common date Morgan silver dollars, one 1879, three 1889, and one 1900; Lot of three Classic US commemorative 50c., includes 1920 Pilgrim, 1925 Lexington, and 1923 Monroe, all are Almost Uncirculated; Lot of twenty-two US silver half dollars; Lot of US and World Coins., etc.

AMERICAN & CONTINENTAL FURNITURE: Fine 20th C.: Nathan Margolis (Hartford CT) slant lid desk, Philadelphia Chippendale style, c. 1917, original paper label; F. E. Banning, Hadlyme, Conn Windsor comb-back writing armchair; Huntboard, by Van Sinderen Woodworking, Maine; Beacon Hill Collection Georgian side table; diminutive chest by Biggs; finely carved pair Chippendale

armchairs; rotating 5 tier bookcase by Sargent; Dining Table, oval faux marble top on wood base and companion set of six French style chairs; Pair of Italian semainier chests; Antiques: Highboy, walnut with shell carving; six Pennsylvania side chairs, c. 1830, green paint; Federal Pembroke, card and drop leaf tables; Windsor bench, 19th C., green paint; Chippendale-form pie crust edge tilt top tea table, late 19th C.; 132" long plank top refectory table; Louis XV bureau plat, embossed leather writing surface; Oak gateleg table, late 17th C., etc.

GARDEN: Monumental iron garden urn, painted iron, 33" h.; Standing pig figure, lead, 14" h. x 38" l.; Putti & dolphin cast white metal, 18" h.; Neo-Classical style cast iron urn planters (4), largest: 19" h.

ASIAN: 19th C. Chinese Export, blue and white (9); lacquer and gilt nesting tables; lacquer kettle and cover, Edo; Japanese woodblock prints (5); Bronze champagne enamel urn as lamp, Chinese, 19th C.; Persian illuminated manuscript, c. 1850; to Shinsui (Japanese, 1898-1972), "Snow Storm" scroll, etc.

TEXTILES: Many deaccessioned to benefit the Slater Memorial Museum's acquisition fund including an embroidered crazy quilt monogrammed "RW" and dated 1884 in block, Continental samplers (8), ethnic clothing and textiles; along with pieced cotton patchwork; two ladies fur coats including one silver cross mink coat with fox collar and arms; etc.

ORIENTAL RUGS: Antique: Chinese, 9' x 11'; Semi-antique: Persian Tabriz carpet, 8' 7" x 12' 2", purchased from Orkney & Yost; Persian Sarouk carpet, 8' 4" x 11', c. 1950; along with another fifteen room size, scatter and runners, types include Agra Mahal, Turkish Oushak, Uzbek Shirvan, Chinese, Persian Tabriz; Persian Sarouk; Uzbek Kazak; Agra Serapi; Uzbek Tekke Bokhara, Kirman, etc.

IMPORTANT MISCELLANEOUS: Running horse weathervane, American, 19th C., in the manner of A.S. Jewell & Co. of Waltham, 17 1/8" h. x 24" l.; Pair of ornate gilt iron mesh window grills, c. 1870, hand-forged; hand-painted miniature portraits (13); R. T. Peterson, Audubon's Birds of America, 1981; Atlas of Hartford and West Hartford, Sanborn Map Company, NY, 1917; 19th C. porcelain Lithophanes (4), three marked K.P.M.; Giori porcelain demitasse service; Waterford "Avoca" stemware (40+); Waterford "Curraghmore" stemware (22) and "Lismore" cocktail shaker; "Delilah" cut crystal stemware by Schott-Zwiesel (14); 19th C. glass compotes/ sweet-meat dishes (3), tallest: 19" h.; Tiffany glass pitcher with flower pattern; two bronze sculptures: Otto Poertzel bronze pheasant sculpture, 31" l. and "Pecheur" after Adolphe Jean Lavergne, 16" h.; early 20th C. windup and pull string toys (7); two early mohair teddy bears; collection of WWI Era Field Gear; German/Prussian Pickelhaube Spike Parade Helmets (2); Ames WWI American Model 1902 Officer's Sword with scabbard, etc.

TERMS: Auction begins at 5:30PM. In addition to live bidding, Winter Associates will accept absentee and phone bids with a 23% Buyer's Premium and live online bidding will be available on Invaluable.com and Liveauctioneers.com with a 28% Buyer's Premium. A 3% discount is available to buyers with cash and approved checks. After the auction, pickup will be by appointment only, please email or call ahead and we will do our best to accommodate you.

LOCATION: 20 mins. west of Hartford, CT. Approx. 2 hrs. from NYC or Boston

Winter Associates, Inc. • 21 Cooke Street, Plainville, CT 06062 • 860-793-0288