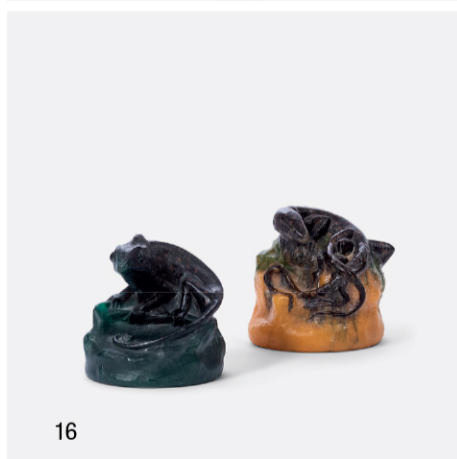
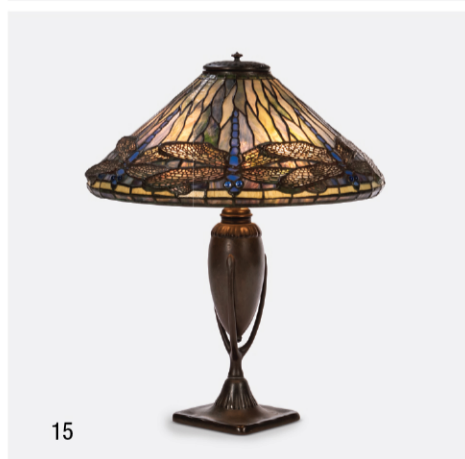
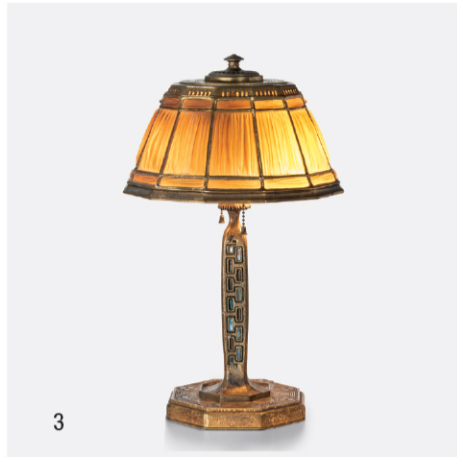


Early 20th Century Design & Lighting *online*Bid online January 19–31 | skinnerinc.com | Previews in Marlborough, MA by appointmentcontact: 20thcentury@skinnerinc.com 508.970.3111

MA LIC. 2304



1 Tiffany Studios "Lily Pad" Shade Table Lamp with Bronze Base, New York, New York, c. 1905 2 Steuben Three-piece Polka Dot Pattern Glass Garniture Set, Corning, New York, early 20th century 3 Tiffany Studios Abalone Pattern Reading Lamp, New York, New York, early 20th century 4 Daum Nancy Pate-de-verre Fish Vide-poche, Nancy, France, c. 1910 5 Daum Nancy Pate-de-verre Crab Vide-poche, Nancy, France, c. 1910 6 Tiffany Studios Urn-base Table Lamp with Swirling Art Glass Shade, New York, New York, early 20th century 7 Pairpoint Lamp with Puffy Roses and Butterflies Oxford Glass Shade, New Bedford, Massachusetts, early 20th century 8 Frederick Carder Sterling Silver Overlay Cased Glass Presentation Vase, Stevens and Williams, England, late 19th century 9 Handel Lamp with Reverse-glass Painted Chinese-style Shade, Meriden, Connecticut, early 20th century 10 Tiffany Furnaces Glass Base Table Lamp with a Tiffany Studios Acorn Glass Shade, New York, New York, early 20th century 11 Steuben Chang Pattern Pilgrim Flask Lamp Base, Corning, New York, c. 1929 12 Handel Lamp with Reverse-painted Glass Scarlet Macaw Shade, Meriden, Connecticut, early 20th century 13 Duffner & Kimberly Water Lily Table Lamp, New York, c. 1910 14 Tiffany Studios Intaglio-carved Favrite Glass Shade on Bronze Dore Counter-Balance Desk Lamp, New York, New York, c. 1910 15 Tiffany Studios "Dragonfly" Table Lamp, New York, c. 1900 16 Two Henri Berge for Almeric Walter Pate-de-verre Lizard Paperweights, Nancy, France, c. 1920 17 Handel Lamp with Reverse-painted Glass Shade with Parrots and Flowers, Meriden, Connecticut, early 20th century

For buyers, consignors, and the passionately curious

FIND WORTH AT SKINNERINC.COM