

# BEVERLY FARMS on BOSTON'S NORTH SHORE

– ON-SITE ESTATE AUCTION – Under a Large Heated Tent with plenty of Parking

*The Country Manor Estate known as*  
**Round Plain Farm, A Long Time Loring Family Home,**  
**140 HART STREET**

## SATURDAY, DECEMBER 18th

**Discovery Sale begins at 10 am | Catalog Sale begins at 2 pm**

Early American Period Antiques, Paintings, Oriental Rugs, Chinese Porcelain and Fine Accessories including an extraordinarily grand Federal Mirror descended from Salem's Nathaniel Bowditch, The Family Library of Rosamond (Bowditch) and Augustus P. Loring with many volumes of Horace Walpole and Strawberry Hill and additional items from Collectors Elizabeth and Augustus P. Loring, a member of the Walpole Society.

**OVER 600 LOTS TO BE SOLD IN ONE DAY |** In person Preview opens at 8 am and runs all day during live Auction



NATHANIEL BOWDITCH FAMILY  
(over 6 ft) CONVEX MIRROR



RARE PAIR OF EARLY AMERICAN EAGLE  
BRACKETS



JOHN APPLETON BROWN



ISIDORE JULES BONHEUR  
(1827-1901)



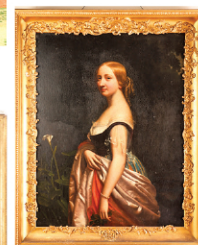
(19th c) LARGE ROSE  
MEDALLION BOWL



DUNCAN PHYFE  
MAHOGANY WORK  
TABLE



POTTING STAND  
topped with (24)  
GRUEBYTILES



(19th)c SPIRIDIONE  
GAMBARDELLA



FEDERAL PERIOD  
MAHOGANY BREAKFRONT



1796 SHIP'S PASSPORT  
signed by GEORGE  
WASHINGTON



STICKLEY ARTS AND  
CRAFTS OAK BOOKCASE



(19th c) CHINESE  
EXPORT  
PORCELAIN  
BOTTLE VASE



AMERICAN SCHOOL  
(18th c) "PORTRAIT  
OF A MERCHANT"



(18th c) JOHN CAFE  
STERLING SILVER  
CANDLESTICKS



FRANK HOLL  
(1845-1888)

*We invite you to join us for this spectacular on-site Estate Sale with something for everyone.*

Bidding will be live under the tent, On line bidding thru Live Auctioneers and Invaluable or Absentee and phone bidding will be available

For More Info and Online Catalog: **www.mcinnisauctions.com** | MA Lic#770 | 978-388-0400 | mcinnisauctions@yahoo.com

