

BILL SPICER AUCTION

WEDNESDAY, November 17, 2021 • 5pm • Viewing at noon

Washington Lodge Masonic Temple • 1515 Ten Rod Rd, North Kingstown, RI

For more pictures see auctionzip.com (auctioneer # 2954) • **Day of auction 401 265-5104**



Watercolor "Silver Cove" by L. Sisson, 42 x 42



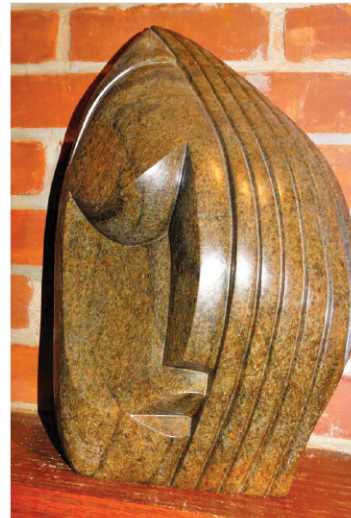
Tiffany Studios
Bronze, Pine Needle, Ink Well



Regency Tea Caddy



2, Mochaware Pitchers,
Seaweed Decoration



Sculpture "Distinctive Woman",
1947 by Richard Mteki



W. Evan Shrewsbury
Grandfather Clock



2, Oils/c by G. W. Whitaker



9 1/2 x 13 1/2 G. Inness
Landscape



Oil/C Sheep by Susan C. M. Waters,
36 x 24



Watercolor "Catboats"
by Mabel Woodward



Vintage Alaskan
Inuit Man



10" Rookwood
Ewer by Mary
Nourse, 1892



"Reaching Panther"
#174 by Anna Vaughn
Hyatt - Gorham



Hereke Rug 7' x 10'6"



Early Chip Carved Box



5 Halloween Pumpkins



Mt Washington Burmese Items



Watercolor by L. Sisson
"Booth Harbour" 30 x 21



14" Hawkes Brilliant
Cut Glass Vase



"River Sunset 1923"
by Birger Sandzen



French China Cabinet
& Vintage Items



Period Slant Front Desk



Excellent Carved
Pedestal Side Table



Oil/Canvas Portrait
by Alvan Fisher 27 x 35



2, Malles Lavolaille,
Paris Trunks



Men & Women at Store
Signed, LL, 27 x 22

FURNITURE: period slant front desk; early one-drawer 1/2 round table; French one-door china cabinet; tiger maple round stand; 2-drawer blanket chest; excellent carved pedestal side table; armoire; 3 Windsor chairs; lap desk table; early chip carved box; tilt top table; 2 blanket chests; hutch table; English inlaid folding card table; French metal wash basin stand; **W. Evans Shrewsbury grandfather clock**; wall liquor cabinet w/ carved bird handle; 10'6" x 7' Hereke rug; 10 1/2' x 3' runner; other Oriental rugs

BRONZES: bronze "Reaching Panther" #174 by Anna Vaughn Hyatt, Gorham & Co; bronze panther signed "Boulton" 9 1/2" x 5"; 1 1/2" bronze German boy "Sepp Falling"; bronze seals by Phil Vanderlei; bronze pig by Katherine Lane Weens; bronze mountain goat signed Jarl; bronze "Sargent" 10 3/8" by F. Remington; bronze woman, 15", (lost wax casting) by G. Lee Hay, 1910; bronze bust of Abe Lincoln by C. E.; bronze lady with 3 children; bronze "head of Nero" by G. Borlghum; Tiffany Studios bronze pine needle #544 ink well; lot of bronze medals

MISC: sculpture "Distinctive Woman", 1947 by Richard Mteki, 14"; Inuit: (seal, Pacific Eskimo carving "Duck", Alaskan man; large sculpture of mother & child, otter "Isapik", 2 dogs curled up on man's leg, Eskimo w/ dead seal); early Japanese scroll; early coconut husker; Desny ink well; embossed ink well; lightning rod and ball; iron Greyhound; Oriental tapestry; dish decoy; German violin; 2 brass jams; 2 boxes of prisms; Leicaflex camera & extra lens; early Maine basket; boy scout lot; Hummels; weather vane; Arvin radio; 4 Malles Lavolaille, Paris trunks; French mantle clock; large French lock; old hockey masks and sticks; 2 baseball bats, one Hank Aaron; Parish, Maine Victorian sled

GLASS/POTTERY: period Chinese cameo carved vase from Qianlong period; 25 pcs Mochaware, Seaweed pattern, pottery; 11 1/2" Libby bud vase; 10 1/4" Libby Cambridge Ohio vase; amberina oil lamp; green perfume and amberina cruets; pr amberina goblets; 10 1/2" ruby Sandwich

perfume; 32" glass candy strip cane; Tucker & Hemphill pitcher, 1828; 10" Royal Bayreuth bowl and underplate; cut glass ship's decanter - green overlay; 10" Rookwood ewer by Mary Nourse, 1892; 12, M. Reden plates; Hawkes brilliant cut glass vase, 14"; Hawkes vase, 8 1/2"; Mt Washington Burmese lily vase and bowl plus sugar shaker and gourd vase; "Queens Burmese-ware vase; goblet and Peach Blow cruet; 2, L.C. Tiffany wines; Regency tea caddy; baccarat decanter, ceramic handled jug; Roseville pedestal; Waterford glasses; 1880 Virginia crock; blown Gin bottles

STERLING/JEWELRY/COINS: American Waltham pocket watch; N.Y. Watch Co key-wind watch

EPHEMERA: three, 1835, "Southern Circumpolar" maps by F. J. Huntington; nice bound books; 10 boxes of Nautical books; 1889 "The Century Atlas of the World"; 1859 "Wrecks and Rescues" book; 1916 "Lone Scout" magazines; 1894 "Youth Companion" magazine; 1950-60 Boys Life magazine; Civil War books; "Personal Memoirs of U.S. Grant" books, 1846-1862; 1828 bound newspapers; Joe Lewis photograph; 1820 Southern RI map

MILITARY/TOOLS: Belgian dbl barrel pistol; Knickerbocker dbl barrel shotgun, American Gun Co; trench art shells; 1898 U.S. bayonet; approx 10 Stanley planes; bronze propeller; Otis Smith Fales patent plane; lot of moulding planes; carving chisels; Wilton 301 power arm vise; Briggs & Stratton 5000-watt generator

PAINTINGS: 9 1/2 x 13 1/2 G. Inness landscape, 1870-1874; oil/c floral by E. L. Swan, 19" x 26"; oil/b by Mabel Woodward, 10 1/2 x 12; oil/c still life of apples; oil/c portrait by Alvan Fisher 27 x 35; oil/wood woman by Myron Barlow, 13" x 9"; painting by John Rittig, 1900; 1909 pastel "Twilight" by W. Alden Brown, 5" x 7"; oil/b and oil/c by C. Gordon Harris; painting by Stacy Tolman, 16" x 13 1/2" from C. Gordon Harris estate; oil/c "Boy on the Beach" by J. N. Barlow, 1885; L. Sisson -

30" x 21" watercolor "Booth Harbour" and 42" x 42" watercolor "Silver Cove"; oil/b "One Winter Day", by Carl R. Craft, 6" x 8"; G. W. Whitaker oil/c 4" x 6" of fruit and oil/b landscape; oil/c, abstract, "October" by John Hare 24" x 24" and watercolor "Fisherman in Rowboat", 24 x 18; watercolor "Catboats" by M. Woodward, 15" x 19"; oil/b "Hussey Bridge, Wickford, RI; 3 crayon drawings by Reynolds Beal - Gorman Bros Circus; painting of men and women at store, signed LL, 27 x 22; pen & ink of girl by Albert C. Sterner; painting by Charles H. Davis; oil/c 15" x 10" by G. Victor Grinnell; painting by A. S. Streeter; drawing by Sammel Martien; painting by Majory Horn; oil/b and oil/c "Horse Drawn Wagon" and watercolor all by Helen Sturtevant; oil/c by E. T. Sutcliffe; 1830's painting of Elizabeth Hall; 2 paintings by E. Principato; oil/c sheep by Susan C. M. Waters, 26 x 24; oil/c French scene by L. Farley; Sherwin painting; original artwork by John Chen; engraving by G. Hall, "River Sunset 1923", by Birger Sandzen; engraving Carmagnoli, plate #7 from vol #1

TOYS: 5 early pumpkins; Atomic Toy Gun, made in Japan; Marble Bingo game; Lionel trains; Tonka and Buddy L trucks; Matchbox and Lindsay cars

Cash • RI or known check only • Mastercard/Visa
15% buyer's premium, 3% discount cash or check
DEALERS - BRING PROOF OF TAX NUMBER

BILL SPICER
AUCTIONEER/APPRaiser
276 Widow Sweets Rd • Exeter, R.I. 02822
401 265-5104

DIRECTIONS: • **FROM CT:** Take 95 N to exit 5A (102 S). Follow 102 S, cross over Rt 3 and continue on Rt 102 for approx 9 mi. Temple is on left.
• **FROM MASS:** Take 95 S to exit 9 (Rt 4). Follow Rt 4 to exit 3B (102 N). Stay on 102 for 1/4 mile. Temple is on right.