

Winter Associates

Auctioneers & Appraisers

In Person & Online Auction

Monday, Oct. 25th at 5:30PM

Jewelry; Silver incl. Tiffany; Paintings; Prints; American, English and Continental Antiques; Fine Furnishings; Better Porcelain, Art & other Pottery; Asian; Oriental Rugs; Christmas Ornaments; Toys; Stamps & Ephemera, etc.

View catalog online as of Oct. 15th at www.AuctionsAppraisers.com

Previews: Friday, Oct. 22nd, 12—4 pm
Sunday, Oct. 24th, 2—4 pm
Monday Oct. 25th, 12—5pm
or by appointment.



Ruth H. Bascom



Asch/Grossbardt, diam., plat, 18k



M.J. Patterson woodblock



Edwardian plat. & diam.



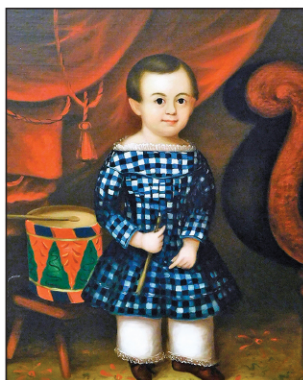
M. Cassat (Breeskin 199)



Attr. W.M. Prior



18k diam. & sapphire



Attr. J.W. Stock, oil, 34" h.



Plat. & diam.



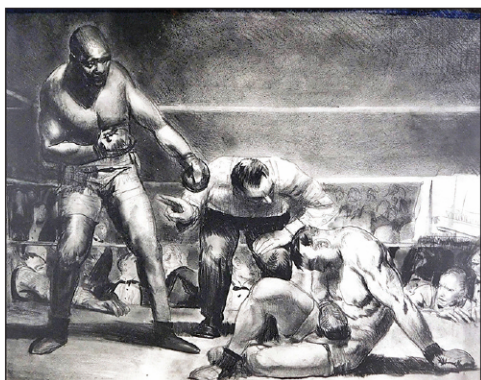
Victorian 14k, aquamarine



Plat. & 14k aquamarine



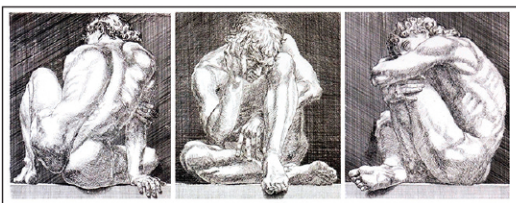
18k diam. waterfall



G. Bellows, "White Hope" litho, 15" h.



Tiffany Vine sterling & other pieces



P. Cadmus, "Nudo 1,2,3"



Handel, 14" signed



Tiffany



O. Antoine (40+ works)



3.5 ct Tanzanite, diam.



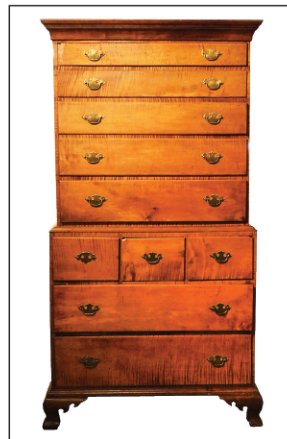
18th C. chest; Chandler



Hispano-Moresque lusterware, 14" d.



Ashworth Ironstone



Am. figured maple



Calligraphy; 1 of 3 campaign chests



Ahearn/Wyeth



Barcelona style

JEWELRY: Over 90 lots including 18K: Leopard pin by Asch/Grossbardt; Tiffany 'T' bracelet with diamonds; Waterfall earrings, each five strands of 43 diamonds (7.4 ct tw); Isabel Encinas multi-colored sapphire necklace & bracelet; Rare Trianon enameled men's cufflinks & studs with emeralds; Roberto Coin earrings, pink enamel & diamond; Art Deco design diamond bracelet; David Yurman gold, sterling and citrine necklace and earrings; Tiffany & Co. acorn style earrings by Schlumberger set with 7.4mm pearls; Tiffany & Co. bangle bracelet; Art Deco brooch, 129 round full cut diamonds, natural blue sapphires; Tri-gold, fish scale bracelet; Cabochon emeralds & diamonds pin & earrings; Roberto Coin flexible diamond ring, diamonds in heart patterns; golden sapphire coil snake ring; ram's head bangle bracelet, etc. 14K: Center 3.5 ct Tanzanite and diamond ring; 2 Retro rose & yellow bracelets; gold box with cabochon sapphire clasp; watch bracelet with diamonds; Victorian aquamarine necklace, eleven old cut natural light blue graduated aquamarines; ruby & diamond retro flower pin; diamond Tutti Frutti domed cocktail ring and brooch; bangle bracelet with six round and one large amethysts in filigree setting; Edwardian filigree bracelet with three diamonds; aquamarine & ruby Retro earrings each with medium blue natural aquamarine, six natural rubies; pendant with US \$5 Gold Coin; etc. PLATINUM: Ten platinum & diamond Edwardian filigree rings; pair aquamarine Retro period earrings, with med. blue natural aquamarines, approximately 17.15ct tw; Edwardian filigree bar pin with 23 diamonds; Edwardian diamond filigree style drop pendant necklace; etc. **OTHER JEWELRY:** David Yurman sterling pendant, bracelets, and rings, Georg Jensen sterling pin & ring; pearls including triple strand baroque; etc.

PAINTINGS AND DRAWINGS: Early Portraits: Ruth Henshaw Bascom profile of young woman; Inscribed William Matthew Prior verso, oil of woman 15" h.; attr. to Joseph W. Stock, full length portrait of boy with drum, oil 34" h.; "Nathaniel Chandler by Winthrop Chandler", oil 23" h.; 19th C. oil portrait believed to be of Elias Black Burton (b. 1816 an attorney and state legislator); 19th C. young woman with book titled "Forget me Not"; etc. portraits depicting boxers, one titled "Jem Belcher". Landscapes, Still Lifes, etc.: Otto Antoine (1865-1951) 37 oil paintings and 7 watercolors/tempera, many framed, an assortment of handsome landscapes

and some figure studies; Joseph H. Greenwood oil, haying scene 31" h.; Brenda Baker; Kevin Beers; George M. Bruestle; Adriance de Groff (3); Deane Keller; Frances Kornbluth; Benson B. Moore (2); Edith Nagler; oil painting resembling known work "The Rivermen" by Frank W. Benson; Drawings: 19th C. ink calligraphy of lion, 21" h.; Rockwell Kent graphite, nautical, 4 1/2" h. **PRINTS:** George Bellows "The White Hope" and "The Street" lithographs; Paul Cadmus "Nudo #1, #2, #3" set; Mary Cassatt "The Manicure" (Les Ongles) etching; George Braque "Quatre Oiseaux" lithograph; Margaret J. Patterson "Torcello", color woodblock; Michael Ahearn, Andrew Wyeth, Jamie Wyeth, "Wonderous Strange" portfolio, and also Four Season portfolios; Benton M. Spruance "Last Stop - Beach Haven", lithograph, ed. 30; Berthe Morisot (Berthe Morisot Drawing with Her Daughter) drypoint; Zao Wou-ki "Composition", 1959; Francisco Zuniga "Hombres con Barca" both I and II; Sigmund Abeles; Andre Brasillier; Louis Icart; Luigi Kasimir; Leo Meissner; Andreas Notttebohm; Flavia Helen Wyeth; Currier & Ives "American Choice Fruits"; John Stobart, "Hartford", etc. **ANTIQUES:** Massachusetts Chippendale serpentine-front chest, mahogany; Chest on chest, 18th C., American, figured maple; two drawer stand tiger maple; Federal bowfront chest; Six thumb-back Windsors, burned stamp "S. Bass"; Windsor Deacon's bench, painted; Six Windsor side chairs, early green finish; Hepplewhite stand; miniature Federal chest; Three campaign chests, one manuf. by Ross & Co., Dublin; Derbyshire oak English dresser, early 18th C., English tavern table; Secretaire Abattant Desk, early 19th C.; Aesthetic display pedestal; Victorian slant lid desk with griffin carved lid, and a banquet table with carved griffin base; Victorian marble top stand; etc. **VINTAGE AND FINE FURNISHINGS:** Barcelona style leather chair with chrome base; Ethan Allen QA lady's secretary desk; Hepplewhite style inlaid card table and tambour front lady's desk; figured maple candlestand; QA console table; etc. **ORIENTAL RUGS:** Carpets: Semi-antique Persian Mashad; Vintage Persian Heriz design; Laristan Sultanabad; Runners: Uzbek Kazak runner; Antique Persian Kurd runner; Turkish Angora Oushak; Agra Mahal; Antique

Persian Senna Malayer; *Scatters:* Uzbek Kazak; Antique Persian Sarouk. **ASIAN:** Chinese reverse paintings on glass, large landscape and two portraits; Illuminated manuscripts; Porcelain including three 17" blue and white figures of officials; Rose mandarin plates; Imari; Japanese hibachi; Chinese stands including marble inset; Kunisada triptych; etc. **GLASS AND CERAMICS:** Green cut to clear Bohemian covered urns; 18th C. Persian bowl 9" d.; Hispano Moresque, 3 lusterware deep dishes; Ashworth ironstone extensive dinnerware with serving pieces; Art Pottery including Nouveau tiles, Rookwood, Van Briggles, Weller, Pewabic, Hjorth; Heubach pate sur pate and faience vases; Herend, Prattware, Royal Doulton, Royal Copenhagen, Dressel Kister and Cie.; etc. **STERLING:** Tiffany c. 1913, pedestal bowl 12" diam.; Tiffany flatware assortment, Vine and Olympian including serving pcs., also Wave, Bamboo; Russian Artel 11 enameled and gilt sifter spoon; George III condiment rack with cut glass bottles; 100+ pieces Jennings flatware service; Mexican 5-piece tea service; Lunt "Rapallo" flatware; etc. **IMPORTANT MISCELLANEOUS:** Handel lamp with signed golden rod shade; Santos, 18th C. Spanish; 19th C. crucifixion figure; clocks; coins; stamps; forty-four star American flag; biscuit and mustard tins collection, many book theme; Native American pottery; *Ephemera* - Paul Brothers sideshow posters; also postcards, trade cards, scrapbook; *Christmas ornaments* in large lots, some Radko; Bisque and other dolls; early stuffed bears; Russian lacquer boxes; *Books* - Art and Decorative Art references on porcelain, glass, jewelry, furniture, textiles, etc. **TERMS: IN-PERSON AUCTION AUDIENCE - Auction begins at 5:30PM.** In addition to live bidding, Winter Associates will accept absentee and phone bids with a 23% Buyer's Premium and live online bidding will be available on Invaluable.com and Liveauctioneers.com with a 28% Buyer's Premium. A 3% discount is available to buyers with cash and approved checks. After the auction, pickup will be by appointment only, please email or call ahead and we will do our best to accommodate you. **LOCATION:** 20 mins. west of Hartford, CT. Approx. 2 hrs. from NYC or Boston

Winter Associates, Inc. • 21 Cooke Street, Plainville, CT 06062 • 860-793-0288