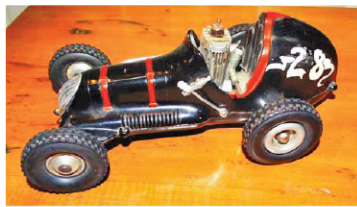


BILL SPICER AUCTION

WEDNESDAY, October 27, 2021 • 5pm • Viewing at noon

Washington Lodge Masonic Temple • 1515 Ten Rod Rd, North Kingstown, RI

For more pictures see auctionzip.com (auctioneer # 2954) • **Day of auction 401 265-5104**



#28 Thimble Drome car with box



L. C. Tiffany 4\"/>



Anasazi Tularose pitcher with dog handle



bronze "Valley of Dahls" by J. Shirley Bothum



cut glass punch bowl



Indian basket 11\"/>



3 cut glass Vaseline colognes



red breasted merganser decoy



brass parallel rule by Bliss, NY



scrimshaw double wheel pie crimper (crack)



Allens patent single shot pistol



scrimshaw whales teeth, one by Ed Fowler



Eli Terry pillar & scroll shelf clock



bronze Indian by Theodore Baur, 1885



hand carved wooden whale



Hawkes center bowl and candle sticks



painted lamp shade floral



rare bronze boy signed St. Leger Eberle, 10.5\"/>



boat model in case "Alexandria"



oil/c trees, 30\"/>



4 pc Buddy L trains (engine 26\"/>



L. C. Tiffany 3\"/>



18\"/>



9\"/>



oil/c by Guy Wiggins, landscape, 1921, 25\"/>



W. Aiken Walker painting "Southern Homestead"



pastel landscape signed J. H. Twachtman



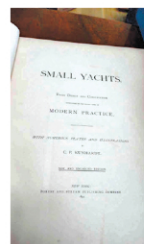
bronze girl w/ turtle by M. J. Cornwell, Gorham



watercolor sailboat by Anthony Thieme



12\"/>



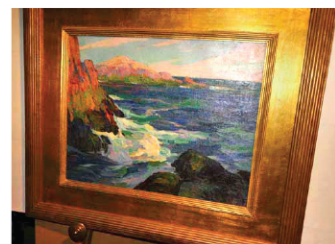
book "Small Yachts" by C.P. Kunhardt, 1st edn



"Brown Brothers Huntington" jug



3 whale harpoons



oil/c 16\"/>



period 2 over 4 bureau



period inlaid flip top card table



Queen Anne tavern table



Painting 24\"/>



E. Howard & Co banjo clock



oil/b by Samuel Paxson, 1906, of Indian

FURNITURE: Queen Anne tavern able; tavern table; period inlaid flip top table; mahg twisted column with dolphin feet; low boy; flip toy card table; Hepplewhite 4-drawer bureau; period 2 over 2 bureau; French curio cabinet; Many Oriental rugs – 4'x7', 8'x10', 10'x3' runner

BRONZES: Rare bronze boy signed St. Leger Eberle, 105\"/>

SCRIMSHAW ETC: scrimshaw dbl pie crimper (crack); scrimshaw wart hog tusk of steamship, NY; 5\"/>

MISC: Eli Terry pillar & scroll clock; E. Howard banjo clock; 19th cent. Grandfather clock face; copper sailboat weathervane top; **Decoys:** (excellent red breasted merganser decoy; French broad river decoy;

decoy by White; Samuel A. Stevens decoy; goose decoy by P. Constant); pr period andirons; Tiffany letter holder & bladder ends; 11\"/>

GLASS/POTTERY: L. C. Tiffany – 3\"/>

butter dish; rare Vaseline cut cologne; Sandwich Vaseline colognes; Weller jardiniere & pedestal; Amberina glass ware; over 20 pc Royal Bayreuth; over 80 early tumblers; painted lamp shade w/ birds & flowers

EPHEMERA/BOOKS: 5 trade card albums; signed 1993 Frank Sinatra poster and tickets; 1796 RI state map; "Supplement to Small Yachts" 1896, 1st edn; 1891 "Small Yachts" by C. P. Kunhardt 1st edn; 1928 "American Whaling" book; many books on whaling; Civil War and painting books; books on boats; 2 John Stobart books; many more books;

MILITARY/TOOLS: Power Master cross bow; Savage 32 cal. pistol; German WWI sword; Hopkin & Allen dbl barrel shotgun; tiger maple black powder rifle – W&G Chance, Birmingham; Savage 20 gauge shotgun; 1952 Hosin Nagant rifle; Dika Spam 45 black powder rifle; Skeleton key pistol; Ruger 22 pistol; 38 Smith & Wesson pistol; Allens patent 1845 pistol; Allens patent single shot hammer pistol; war medals; Kobalt tool chest & contents; chisels

PAINTINGS: pastel signed J. H. Twachtman, landscape; 3 paintings by Laurence P. Sisson "Booth Bay Harbour, Maine" 24"x15", "Evening Whispers" 24"x36" and oil/b "Seascape 24"x36"; oil/b by Edgar Samuel Paxson of Indian, 1906, 5½" x 4½"; Woodland scene by J. H. Beers, 1878; oil/c trees by Emile A. Gruppe, 30"x36" (Occum Pond NH); oil/b by W. A. Walker, w/c sailboat in Harbor by Anthony Thieme; 3, C. Gordon Harris paintings – one "Wickford Town Dock" 28"x22"; 2 w/colors by S. R. Chaffee; oil/c by G. W. Whitaker; w/c sailboat by E. S. Watson; "Schooner Alabama" by

Renault; oil/c clipper ship, 1928 by Gordon Grant; oil/c by A. Bulow; w/c by Paul Landry; w/c by James Cree; oil/c by Nickerson; oil/c tug boats by John Tayson; oil/b by F. Usher DeVal; o/b of Mary Greenleaf, 1786; 6 pastels by Ralph Williams; oil/b by Albert Looking Elk; w/c by Loring W. Coleman; oil/c by J. Syer; sailing picture by Leroy Neimann, 77; etchings & engravings by Y. E. Soderberg; 2 oil/c by G. De Rgillite; G.A Hays 8" x 9" painting; 2 Stacy Tolman paintings; 2 prints by John Stobart; 2 Oriental pictures, signed

TOYS: 35" Smith Miller fire truck; Smith Miller dump truck; Smith Miller cab & trailer; Drome #s 28 & 19 gas powered race cars; Texaco fire chief truck; #48 Zilotone toy & disks; Lucky Shot toy; Singer child's sewing machine; 1928 pick-up truck; fire chief car; American Flyer #4633 Lone Scout train; 4 pc Buddy L cast iron train set (engine is 26" long); 4 pc Ives train set; 4 Lionel standard gauge trains #s 418, 419, 490

Cash • RI or known check only • Mastercard/Visa 15% buyer's premium, 3% discount cash or check DEALERS - BRING PROOF OF TAX NUMBER

BILL SPICER AUCTIONEER/APPRaiser
276 Widow Sweets Rd • Exeter, R.I. 02822
401 265-5104

DIRECTIONS: • **FROM CT:** Take 95 N to exit 5A (102 S). Follow 102 S, cross over Rt 3 and continue on Rt 102 for approx 9 mi. Temple is on left.

• **FROM MASS:** Take 95 S to exit 9 (Rt 4). Follow Rt 4 to exit 3B (102 N). Stay on 102 for ¼ mile. Temple is on right.