

Alabama

B. Hannah Daniel Antiques

Connecticut

Roberto Freitas*

The Hanebergs Antiques

Hanes and Ruskin

Allan Katz*

Bettina Krainin

Derik Pulito

Delaware

James M. Kilvington, Inc.

Illinois

Folk Lodge Antiques*

Indiana

John Sinning Antiques and Folk Art*

Kansas

American Spirit Antiques

Kentucky

Lana Smith

Massachusetts

Antiques Associates of West Townsend *

Brian Cullity*

Colette Donovan

Oliver Garland*

Samuel Herrup Antiques

Donna Kmetz

Leatherwood Antiques

John Hunt Marshall

Hilary and Paulette Nolan

Christopher Settle

Elliott and Grace Snyder

Maryland

Firehouse Antiques

Lisa McAllister

Silver Art by D&R*

Maine

Peter H. Eaton Antiques

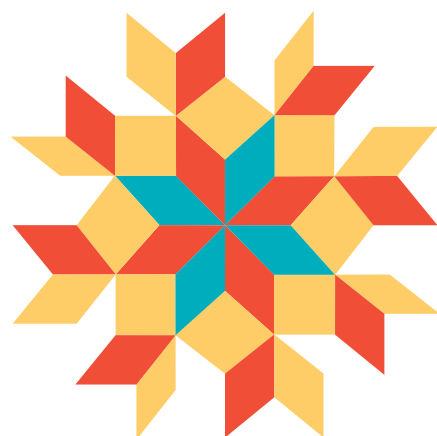
Heller Washam Antiques

Bill Kelly*

Pioneer Folk Antiques LLC

Dennis Raleigh & Pumpkin Patch Antiques

The Mars and Neptune Trust



Antiques In Manchester 2021

The Collector's Fair

August 11th - 12th*

10 am - 6 pm both days

Sullivan Arena, on the beautiful
campus of St. Anselm College
Manchester, NH

*COVID-19 conditions permitting.

New Hampshire

Mark and Marjorie Allen

Thomas Clark

Country Cupboard Antiques*

Frاندino Antique Carpets*

Michael Hingston Antiques*

New Jersey

A Bird in Hand

New York

Aarne Anton/Nexus Singularity

J & R Ferris Antiques

J & G Antiques

James Wm. Lowery Fine Antiques and Arts

Steven S. Powers

John Keith Russell

Willow Springs Perennial Antiques*

David Zabriskie

Ohio

American Heritage Antiques*

Hannah Humes *

Jane Langol

Latham House

Pennsylvania

Diana H. Bittel Antiques*

Emele's Antiques

Greg Kramer & Co.

William and Teresa Kurau

Joseph Lodge*

J.K. Nevin

Saltbox Antiques

Elle Shushan

Robert Snyder and Judy Wilson

Earle Vandekar of Knightsbridge

South Carolina

James Island Antiques*

Vermont

Norman Gronning Antiques

Virginia

Thistlethwaite Americana

*New dealer this year



PHYSICAL
DISTANCING
OBSERVED

MASKS REQUIRED
FOR ADMISSION

www.AntiquesinManchester.com

Presented by:

DISAIA MANAGEMENT

www.disaiamanagement.com

860-908-0076 • disaiamgt@gmail.com

Antiques & Fine Art
MAGAZINE

ANTIQUES

ADMISSION
\$15.00

ON SITE SHIPPER,
MASTERCARD
AND VISA



BRIAN CULLITY ANTIQUES & FOLK ART, Sagamore, Mass. — An Eighteenth Century Delft covered butter pot.

August 11 & 12



AARNE ANTON/NEXUS SINGULARITY, Pomona, N.Y. — Music notes andirons marked Nashville, cast iron, midcentury, 17 inches tall.

PETER EATON ANTIQUES, Wiscasset, Maine — A fine and rare Queen Anne corner chair, circa 1730-60, with scrolled arms, columnar-turned posts and legs ending in vase and ball-turned feet, turned cross stretchers and with a cabriole front leg ending in a large pad foot. Maple throughout in an old red stain. There is evidence of old (not active) worm damage on the chair, particularly near the bottoms of the legs. The mate to this chair is at the Metropolitan Museum and is pictured and discussed on pages 38-39 in *American Furniture in the Metropolitan Museum*. Until a single example of this chair was found in Norwich, Conn., and attributed to a maker there, these chairs were always attributed to Rhode Island based on the columnar turnings of the legs. This example was found in Newport. The dimensions are height of chair, 30½; seat height, 17 inches.



DERIK PULITO, Kensington, Conn. — Rare circa 1680 small pilgrim century paneled chest in early paint — all original; rare 1680 pine, notch carved, linen fold, linear scored pine bible box — also same treatment to top (excellent condition); hidden lapped cheese box in original green paint; Eighteenth Century beehive turned chestnut bowl in early red paint with steep sides.



ROBERT SNYDER & JUDY WILSON, Lititz, Penn. — Pair of unusual painted soapstone penguins, 5½ inches high.



A few of the carefully curated objects we are bringing to Antiques in Manchester 2021, August 11th-12th. Folk art, early maps, painted furniture, guns, art, and early accessories.

PAUL * DOUGLAS GALLERY

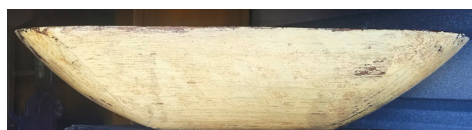
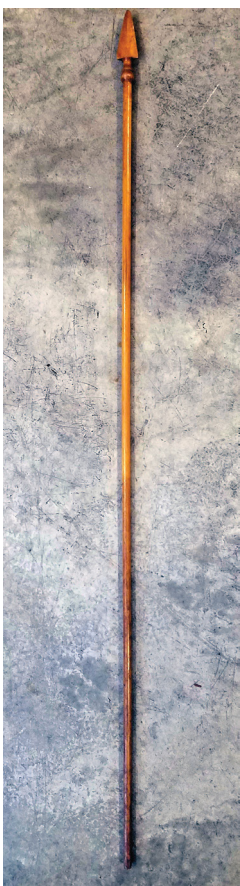
Contact us at 410-648-5639 or cell 410.708.4085.

firehouseantiques.PT@gmail.com

102 N. Main Street, Galena, MD 21635

116-A East Main, Odessa, DE 19730

Facebook Paul Thien Instagram thien.paul or thien_paul



Welcoming New And Old Friends To The Manchester Antiques Show

What a year this has been for all of us! So much distance, yet it seems that we are all still so connected. They say that friends are like the stars — you can't always see them, but you always know that they are there. When we gather in New Hampshire this year we will be missing some of the people we love, but there are many new faces to get to know! The spirit of preserving our history, by collecting its artifacts, seems even more important now. Understanding our past is such an important element in building a solid future for the generations to come.

I am pleased that, in addition to so many of our usual exhibitors, we will be joined by dealers who, though new to our show, are well-experienced in our business, including some who had planned to join us last year. I am delighted to welcome Antiques Associates of West Townsend, Diana Bittel, Country Cupboard, Brian Cullity, Folk Lodge Antiques, Hanes and Ruskin, Michael Hingston, Hannah Humes, James Island Antiques, Allan Katz, Bill Kelly, Joseph Lodge and Willow Springs Antiques to the roster.

We have all been through so much in the past year and a half and I know that we have a lot to catch up on! Business has been surprisingly good for many over this period, but I have heard that many of our dealers have been buying and saving amazing things just for this show. There



will be many great things to see, enjoy, talk about, and yes — BUY!

I am selling my house and recently I had the “walk-through” before closing with the buyers. They are in love with the house as well as my very eclectic collection of art and antiques. They fear that

after I take out all the wonderful things I have collected over the years, the house will look completely different. Of course it will! They asked if I could just help them “style” the house. The thing about a house with such a diverse collection is that there really isn't a “style.” It is a place

of objects purchased over a lifetime because they were loved. So much of what is here does not “go together” for any reason other than that I have fallen in love with each object. This house will be an opportunity for this lovely young couple and their child to find their own style, create their own story and soon the house will become their home, filled with the things they love, and it will be just as wonderful.

Collecting is all about finding those things that speak to you and fill you with joy. That feeling you have about those things fills the aura of the home, and anyone with a sensitivity to that will love it too!

We will continue with our “Why I Collect” series on Instagram and Facebook. Everyone has such interesting stories about how they started collecting or how they approach things. For more information and to get in on the fun, follow Antiques in Manchester on either platform.

Whatever your approach to collecting or “style,” Manchester, N.H., is the place to be August 9-14, and Antiques in Manchester is the spot for August 11-12. We have lovely wide aisles and the air filtration system in the rink has been upgraded this year, so we should all be very comfortable!

I can't wait to see you all!
Karen DiSaia

ROBERT SNYDER-JUDY WILSON

AMERICANA - FOLK ART

1032 PRESIDENTS DRIVE, LITITZ, PA 17543 • (717) 568-2620

EMAIL - SNYDERWILSONINPA@GMAIL.COM • WEB - WWW.SNYDERWILSONANTIQUES.COM



Early hooked rug with a trio of pots containing a variety of flowers, all on a striking black background, surrounded by an equally interesting border.

Ref: Folk Treasures of Historic Ontario, illustration #53.

Wool on burlap. Late 19th century. Professionally cleaned and mounted.

42-1/4 inches x 21-1/2 inches. A folk art masterpiece!



19TH CENTURY RARE
THREE TIER HANGING BASKET
IN ORIGINAL DRY RED.
EXCELLENT CONDITION

Derik Pulito

18th & 19th Century
Country Americana



KENSINGTON, CT
(860) 478-0588
By Appointment Only

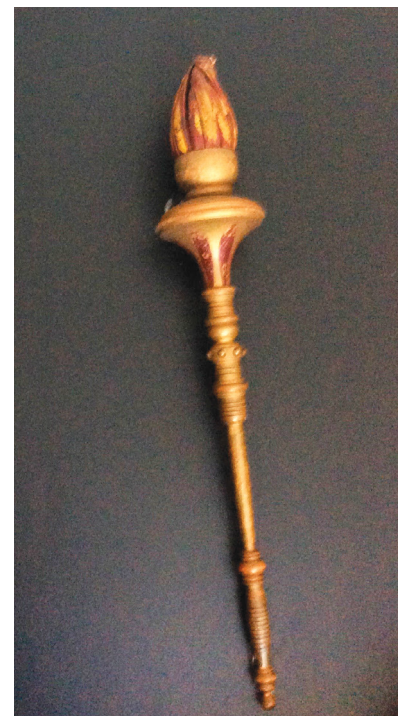


WILLIAM R. & TERESA F. KURAU, Lampeter, Penn. — An amazing collection of 67 pieces of the America and Independence Series or the States Pattern made by James and Ralph Clews circa 1825. From the Historical Staffordshire American Patriots and Views book written by Jeffrey B. Snyder on page 42: "America and Independence Series. This is a dark blue printed series with a woman on either side for the central, frequently romantic, view. To the left the woman holds up an image of Washington. This woman is blindfolded, symbolic of justice. The kneeling woman to the right wears the Liberty Cap and holds the Liberty Pole. The names of 15 states in festoons create the border. The largely romantic views are mostly given descriptive names, including Sheep on Lawn; Mansion, Foreground A Lake With Swans; Three Story Mansion, Small Extension to the Left; Three-Story Building, Tow Wings and Center Section; Two-Story Building with Curved Drive, Building in Distance Women in Foreground; Castle with Flag, Boats in foreground; Mansion, Small Boat with Flag in Foreground Building, Two Wings, Water in Foreground; Mansion, Circular Drive; Mansion, Winding Drive." Ex Zamoiski Collection.

Antiques In Manchester
August 11 & 12



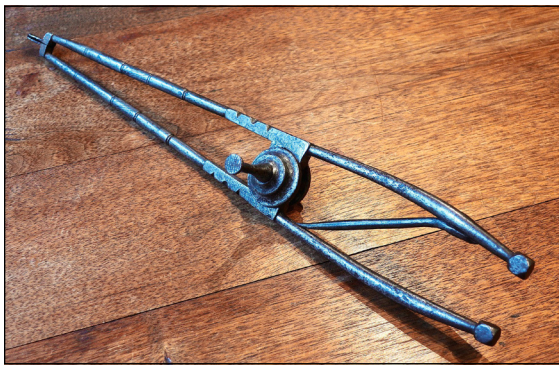
LANA SMITH
Antiques & Design



Odd Fellows ceremonial scepter.
Original paint with its flame done in leather.
22" inches length.

specializing in American folk • textiles • decorative arts

502-553-9491
Lsmithfolk@gmail.com



NORMAN GRONNING ANTIQUES, Shaftsbury, Vt. — Pair of Whitesmith-made Eighteenth Century unusual pipe tongs with diamond head terminus handles, vertical tobacco tamper with spade-shaped ember tips. Length is 16¾ inches.



PETER EATON ANTIQUES, Wiscasset, Maine — A country Queen Anne tea table with oval top, shaped apron and dramatically splayed legs ending in shaped feet. Pine top and frame with maple legs. Probably New Hampshire, third quarter Eighteenth Century. Top is 24½ by 30 inches; 25¼-inch height. A series of small “I” brackets were attached to the underside at some point in the past.



BRIAN CULLITY ANTIQUES & FOLK ART, Sagamore, Mass. — A silver porringer by Ebenezer Moulton, Boston and Newburyport.

ANTIQUE ASSOCIATES AT WEST TOWNSEND, West Townsend, Mass. — Rare Westerwald gray stoneware salt-glazed cask, keg, with pewter spigot, with a portrait and seal of Victor Amadeus, circa 1690-1700, measuring 13 inches long by 14 inches high on stand. There is chipping to bung rim caused by years of use, else excellent and original. A robust example, rarely encountered molded, tooled cask featuring impressed and applied ornament, including armorial and portrait; centering the bung are bands of applied repeating decorative devices each displaying wreath and lion motif against diapered ground [symbols of royalty]. The barrel rests within the original carved walnut cradle featuring four carved lion heads; carved pyramidal devices terminate each end of base rails. See *Steinzeug, Kunst-gewerbemuseum Der Stadt Koln*, Koln 1986; page 413, plates 756 and 757.



SAMUEL HERRUP ANTIQUES

116 Main Street, P.O. Box 248 Sheffield, MA 01257

(413)229-0424 c: (413)822-1471

herrup@verizon.net | www.samuelherrup.com



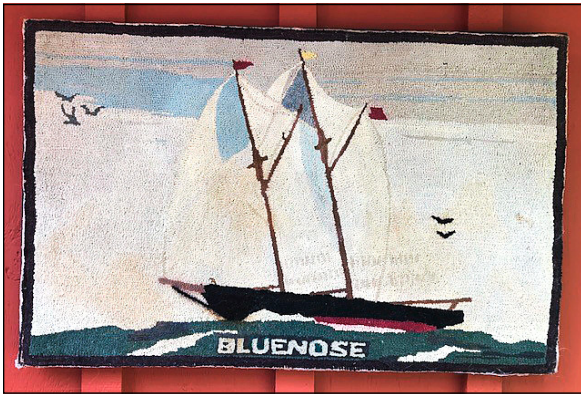
DAY SILHOUETTES

Fine pair of painted silhouettes by Augustus Day (active 1800-1840) of John & Rebecca Miller, signed “Day fecit”, c. 1830, with original eglomise glass and gilt frame. 7” x 10” overall.



OVERSIZED LIVERPOOL PITCHER

Outstanding large Liverpool creamware pitcher with ship “Camilla J. Hubber” on one side and a memorial to Washington on reverse, c. 1810. Ht. 11 3/4”. A similar pitcher with the same border is pictured in *Teitelman Creamware For The American Market* (2010) p. 194-195, #55.



PIONEER FOLK ANTIQUES, Ellsworth, Maine — Circa 1920s-30s hooked rug of the famed *Bluenose* schooner, 44 inches wide by 27½ inches high, was professionally mounted.



WILLIAM R. & TERESA F. KURAU, Lampeter, Penn. — Rare 10-inch Four Medallion Historical Staffordshire ceramic plate with Jefferson, President Washington, Lafayette and Governor Clinton. Park Theater, New York in the central view, and Erie Canal the view of the Aqueduct Bridge at Little Falls at the bottom. The border is the acorn and oak leaf border made by Ralph Stevenson, circa 1825, and made in Staffordshire, England, for export to the American Market. Ex Zamoiski Collection.



FIREHOUSE ANTIQUES, Galena, Md. — One of three sailor whirligigs in original paint, missing paddles. Three sizes, ages approximately the same.



NORMAN GRONNING ANTIQUES, Shaftsbury, Vt. — Pair of silver mounted and inlaid British pre-Revolutionary holster pistols, stamped Wilson, circa 1750-70. Length is 14 inches.



PETER EATON ANTIQUES, Wiscasset, Maine — A very fine pair of Boston andirons with double faceted lemon tops, octagonal shafts, and slipper feet. Completely original condition including log stops. It is marked "J. Molineux Founder Boston." 19½-inch height; 24-inch depth.



631-598-5950 • Email: antig54@aol.com
Web: www.jandgantiques.com



PAIR OF BANISTER-BACK SIDE CHAIRS

Descended in the family of Revolutionary War General Joseph Cilley (1734-1799) of Nottingham, New Hampshire.

SCRUB TOP TAVERN TABLE

(1790-1820). Vintage decoys and assorted items.

AARNE ANTON NEXUS Singularity



Rare leaping deer iron arcade target with retractable heart. C.W. Parker, Kansas
12 x 13 inches

845-461-8506 american.primitive@verizon.net
americanprimitive.com



ANTIQUE ASSOCIATES AT WEST TOWNSEND, West Townsend, Mass. — Eighteenth Century bed valance side panel, silk embroidery on linen hanging — a wedding piece featuring bride and groom. The mount measures 77½ by 12¾ inches; valance is 74¼ by 10¼ inches. This crewelwork panel by unknown maker, has a tasseled hem probably a valance from a set of bed hangings; worked in polychrome wool yarns on linen in a floral and bird motif featuring a full-length man and woman. There is scattered light staining but still in very good condition.



ROBERT SNYDER & JUDY WILSON, Lititz, Penn. — Tin anniversary top hat, copper banded and tin bow measures 13 by 7 inches.

DERIK PULITO, Kensington, Conn. — Nineteenth Century rare three-tier hanging basket in original dry red. Excellent condition.



David A. Zabriskie

Lake Placid, New York

518-524-9967



Schoolgirl Academy Needlework, "Summer"

Large antique ca. 1810 silk embroidered needlework

Boston area origin, signed by maker,
original eglomise panel and gold leaf frame,
minor loose threads and staining.

27 inches x 29 1/2 inches

PETER H. EATON

AMERICAN FURNITURE



WWW.PETEREATON.COM

8 FEDERAL ST. WISCASSET, ME 04578

(207) 687-8512 • PETER@PETEREATON.COM

A RARE PAIR OF TENON-ARMED BRACED-BACK WINDSOR CHAIRS with incised crest rails and arms, vase-turned spindles, deeply sculpted seats, and exceptionally well-turned legs and stretchers. In an old red stain over an original brown/red. Maple and ash with mahogany arms. There is a crack in one arm where it meets the crest rail, and there is a face patch on the other chair where the front post meets the arm. The "best" of RI windsons, a near mate is pictured and discussed in Santore, *The Windsor Style in America*, pp.122-3. 38" ht., 16 ¾" seat ht.



SAMUEL HERRUP ANTIQUES, Sheffield, Mass. — Very good American hooked floral hearth rug, circa 1840-60, 33½ by 68 inches mounted.

Antiques In Manchester



LEATHERWOOD ANTIQUES, Sandwich, Mass. — Carved wooden Scandinavian distaff with pinky-red wash star/pinwheel medallion, 20¼ inches long by 4¾ inches wide, circa 1900. For more photos, visit www.leatherwoodantiques.com under: Folk Art & Painted Objects.

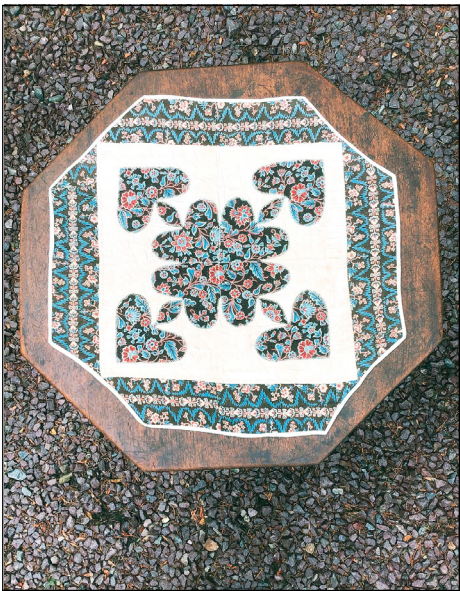
BRIAN CULLITY ANTIQUES & FOLK ART, Sagamore, Mass. — A wonderful child’s tape loom carved from a solid piece of pine, early Nineteenth Century.



FIREHOUSE ANTIQUES, Galena, Md. — Early iron catcher’s mask in red, gold and blue polychrome decoration. Custom metal stand is included.

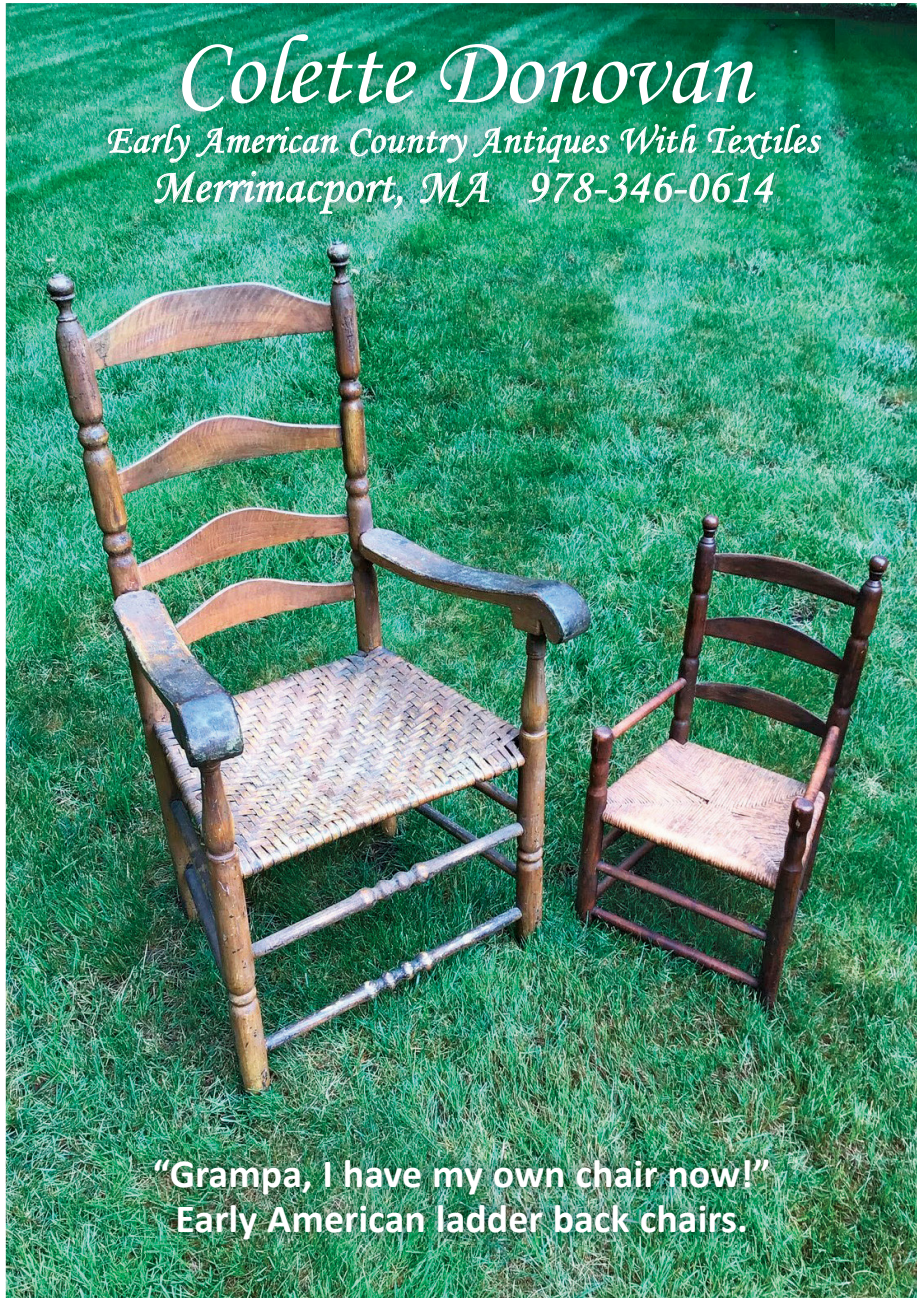
August
II & 12

COLETTE DONOVAN, Merrimacport, Mass. — Early American rare, quilted table mat, cotton appliqué featuring hearts in a graphic, octagonal design, 19 inches.



Colette Donovan

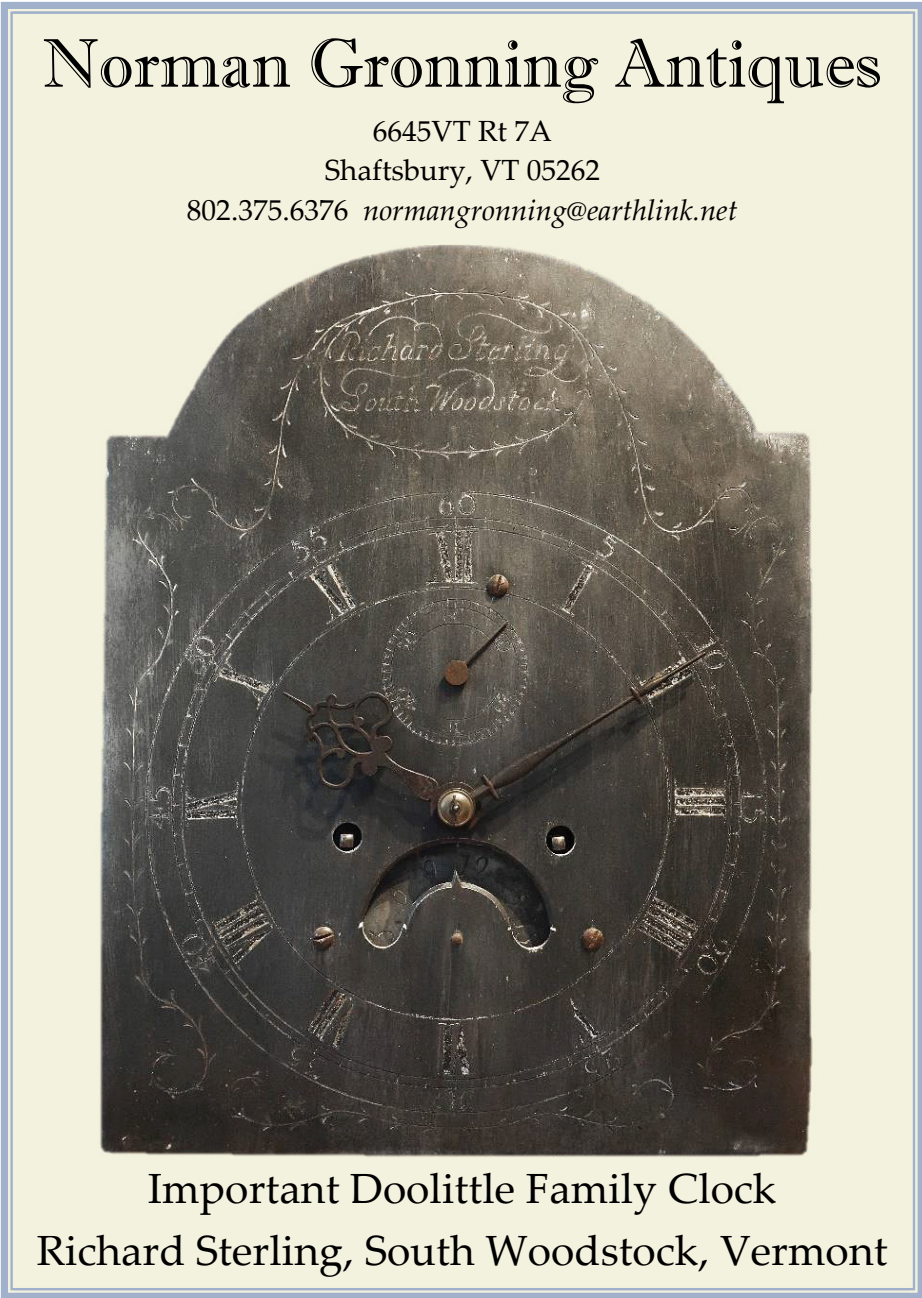
Early American Country Antiques With Textiles
Merrimacport, MA 978-346-0614



“Grampa, I have my own chair now!”
Early American ladder back chairs.

Norman Gronning Antiques

6645VT Rt 7A
Shaftsbury, VT 05262
802.375.6376 normangronning@earthlink.net



Important Doolittle Family Clock
Richard Sterling, South Woodstock, Vermont



J&R Ferris

ANTIQUES

jandrferisantiques.com

315 542-1643
rkentiana@yahoo.com

FROM FOLK TO FINE ART

For information on Rockwell Kent see
www.scottrferris.com and
www.rockwellkentpaintings.com





AARNE ANTON/NEXUS SINGULARITY, Pomona, N.Y. — Nineteenth Century African American head expressively made from sewer tile with black pigment, Georgia, 5 inches high.

DERIK PULITO, Kensington, Conn. — Two central Connecticut Queen Anne, circa 1760, cherry snake foot candlestands in old finish, excellent condition.



DAVID ZABRISKIE, Lake Placid, N.Y. — This Adirondack child's chair. A rare signed and dated Westport chair in vintage green paint over original grey.



Leatherwood Antiques

508-420-1433

www.leatherwoodantiques.com














The Mars & Neptune Trust

*"Aspiring Officers & Gentleman:
The Lives of Midshipmen and Cadets, 1750-1850"*
A cataloged exhibition at Antiques in Manchester



JOSEPH WOOD (American, 1778-1830)
A United States Navy Midshipman, c. 1815

P.O. Box 41
Wiscasset, Maine 04578

(304) 279-7714
marsandneptune.org



DAVID ZABRISKIE, Lake Placid, N.Y. — Pair of American figural bronze hound andirons, 12 inches high, circa 1890-1920.



THE MARS & NEPTUNE TRUST, Wiscasset, Maine — Albert Tracy "Fort Putnam at West Point," 1844 (detail), oil on canvas, 23 by 30 inches; signed and dated on lower left "A. Tracy 1844."



FIREHOUSE ANTIQUES, Galena, Md. — Teenie Weenie Lawn Golf®. Comes with many parts in the original box.



PIONEER FOLK ANTIQUES, Ellsworth, Maine — Mid-century tile pottery displaying a fish glazed in several highly vibrant colors. This studio artwork was uniquely crafted using four separate tiles (each 6 by 8 inches) and mounted for wall hanging on a burlap-covered board within a wooden frame. Overall size is 23 inches wide by 17 inches high by 1½ inches deep.



LEATHERWOOD ANTIQUES, Sandwich, Mass. — Pair of floral window rests depicting colorful baskets of fruit, measuring 4 inches high by 3 inches wide by 3¼ inches deep, English circa 1820. For more photos, visit www.leatherwoodantiques.com under: Stoneware, Terracotta & Majolica.

MARK & MARJORIE ALLEN

Furniture & Accessories of the 17th, 18th & early 19th centuries



Try us if you are looking for the best early Delftware

www.antiquedelft.com

603-644-8989 | e-mail: mandmallen@antiquedelft.com
36 Endicott Street East, Unit 13/14 Laconia, NH 03246

J Russell Antiques

Shaker - and other objects of fine design



(914) 763-8144 • email: jkr@jkrantiques.com
110 SPRING STREET, SOUTH SALEM, N.Y. 10590
www.jkrantiques.com





NORMAN GRONNING ANTIQUES, Shaftsbury, Vt. — Open, carved, decorated small hard pine box. Geometric carving on dovetailed front and sides. Old salmon over paint, yellow under paint.



ANTIQUE ASSOCIATES AT WEST TOWNSEND, West Townsend, Mass. — A folk art oil on canvas portrait of a handsome gentleman seated in paint-decorated Windsor chair, circa 1810, 24 by 30 inches. There is scattered minor retouch and varnishing, wax lined, original stretcher. The agreeable well-dressed sitter with big brown eyes is quite handsome as is the chair in which he sits...



ROBERT SNYDER & JUDY WILSON, Lititz, Penn. — Fantastic pair of "Atlantic City" children's sand pails, beautiful original condition.



WILLIAM R. & TERESA F. KURAU, Lampeter, Penn. — Ceramic Staffordshire figure of Saint George and the Dragon made by Ralph Wood, circa 1790, with amazing deep vibrant color and exquisite detail. It measures 4¼ by 7½ inches by 7½ inches tall. It is quite scarce.



FIREHOUSE ANTIQUES, Galena, Md. — Oval C.O.D. sign. Fine crackled paint, sign company name faintly visible.



J&G ANTIQUES, Amityville, N.Y. — Sheraton mahogany card table with nicely shaped apron and conforming top (1790-1820).

Antique Associates

At West Townsend, Inc.

Expert Brokers of Antiques, Art
and Antique Arms Since 1983



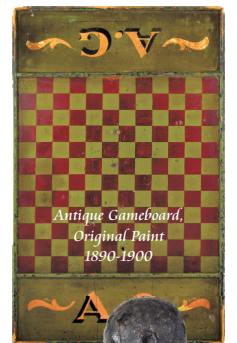
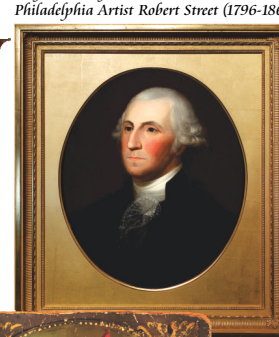
SHELDON PECK (1797—1868)
Portraits of a Man and Woman,
Painted About 1828

*William and Mary Kas in Original Red Surface, New York
New York City, Circa 1720-1730*



*Chest of Drawers, State of Maine,
Original Paint and Decoration, Rare White Paint
Maine, circa 1825-1840*

*George Washington: Fine, Portrait Attributed to
Philadelphia Artist Robert Street (1796-1865)*



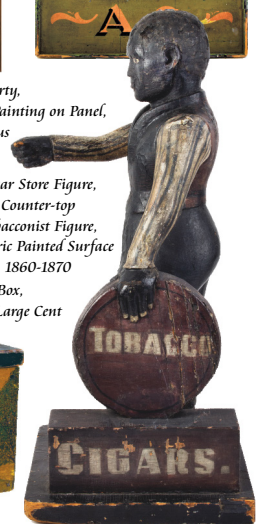
*Antique Gameboard,
Original Paint
1890-1900*



*Lady Liberty,
Patriotic Painting on Panel,
Anonymous*

*Cigar Store Figure,
Counter-top
Tobacconist Figure,
Historic Painted Surface
1860-1870*

*Folk Art, New England Decorated Rectangular Lidded Box,
Original Paint Lock Hasp: 1816 Coronet Liberty Head Large Cent
Circa 1820*



WWW.AAAWT.COM

473 Main Street • P.O. Box 129W • West Townsend, Massachusetts 01474
(978) 597-8084 • E-mail: drh@aaawt.com • Open 7 days 10 am - 5 pm • Visit www.aaawt.com for more!



Salt Box Antiques
Sugarloaf, PA tel 570-788-1716

*18th century
New England table
in original condition*



BRIAN CULLITY ANTIQUES & FOLK ART, Sagamore, Mass. — An Eighteenth Century wax sculpture of a courtly figure, probably French.

10am - 6pm

LANA SMITH ANTIQUES, Masonic Home, Ky. — Robin on wooden base with nicely carved wings. It is 8 inches tall.



THE MARS & NEPTUNE TRUST, Wiscasset, Maine — Portrait of Cadet John McClellan, USMA, circa 1826, oil on canvas, attributed C.R. Parker (1799-1849), 30 by 25 inches, within period, gilded composition frame.



COLETTE DONOVAN, Merrimacport, Mass. — American pine tape loom, "A W 1770," deeply patinated with appropriate age cracks, 28 inches.

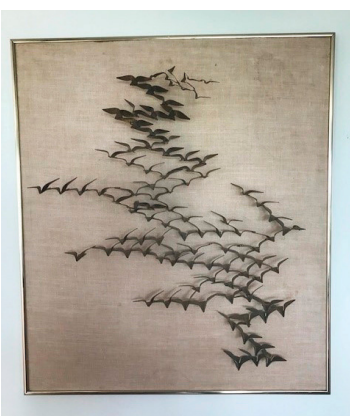


DERIK PULITO, Kensington, Conn. — Circa 1750 eastern Connecticut cherry pipe box with original drawer in early dry black paint. Excellent condition. Chestnut secondary.

*Antiques
In Manchester
August 11 & 12*

J&G ANTIQUES, Amityville, N.Y. — Wm. Peirce leather fire bucket, 1832.

PIONEER FOLK ANTIQUES, LLC

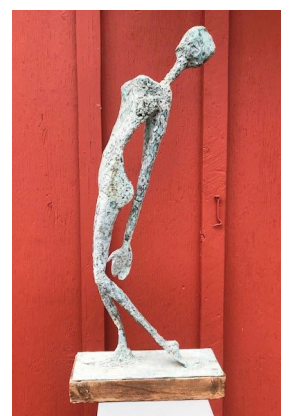


Mid-century metal sculpture displaying a team of seagulls in flight. This artwork is mounted on a board covered by a linen mat within a metal frame — all period to the piece — and on the reverse side bears an original "Curtis Jere" label. Overall 32 1/2" high x 18" wide.

**Folk Art • Mid-Century
Architectural • Garden**

**Ellsworth, Maine
207-664-4744**

Circa 1960's-70's model for the sculpture of an abstract female figure. Likely molded or cast using a combination of clay, concrete and/or resin-based materials over an armature, this strikingly graceful form is affixed to a wooden base. 31 1/2" tall.

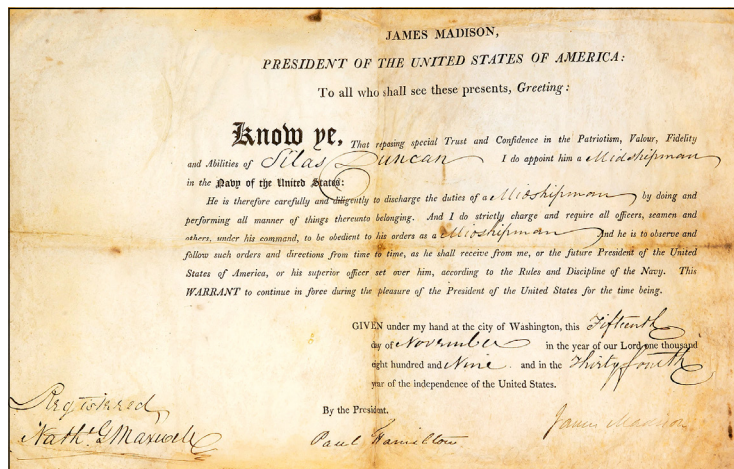




LANA SMITH ANTIQUES, Masonic Home, Ky. — Pair of shoe whistles with alligator surface, 4 inches high.



SAMUEL HERRUP ANTIQUES, Sheffield, Mass. — American carved and painted sailor made box, circa 1820-40. Dimensions: 2-1/8-inch height; 9 3/4-inch width; 4 1/2-inch depth.



THE MARS & NEPTUNE TRUST, Wiscasset, Maine — Future naval hero Silas Duncan's original 1809 appointment as a midshipman signed by President James Madison.



ROBERT SNYDER & JUDY WILSON, Lititz, Penn. — Footwear trade sign, wood, white lettering on a black sanded ground. Measuring 42 by 21 inches.

LEATHERWOOD ANTIQUES, Sandwich, Mass. — Round game board ~ Derby Horse Race tin litho by Jeanette Toy & Novelty Company founded 1898, Pennsylvania, 10 1/2-inch diameter, early 1900s. For more photos, visit www.leatherwoodantiques.com under: Toys, Games & Boards.

WWW.HISTORICALCHINA.COM

KURAU FAMILY@GMAIL.COM

P.O. BOX 457, LAMPETER, PA 17537

William R. & Teresa F. Kuran
Historical Staffordshire & Collectors Items



Antiques In Manchester
2021

The Collector's Fair

August 11th-12th*

10 am - 6 pm both days

*Come see, feel, and touch in person
and fall in love again!*

717.464.0731





It's All About
Authenticity

HILARY & PAULETTE NOLAN

508 548 0127 | hpnolan@mac.com

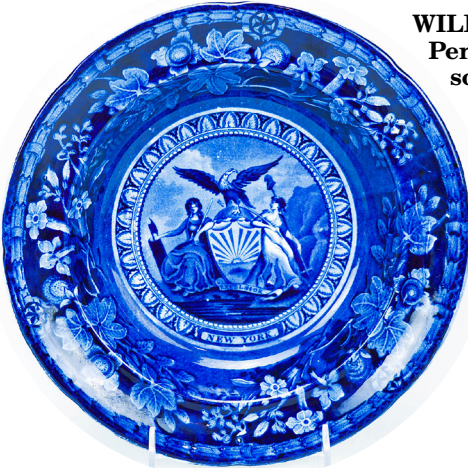
FALMOUTH | CAPE COD



New England.
Circa 1820



PETER EATON ANTIQUES, Wiscasset, Maine — A banister-backed armchair with molded tombstone crest, shaped banisters and arms, and turned stretchers. In old black paint over a thin original red. Exceptional surface and condition, perhaps one inch was taken off the bottoms of the back legs at some point in the past. Maple throughout, 43½-inch height; 17-inch seat height. The mate to this chair is shown and discussed on pages 64-66 in *Harbor and Home*. That chair is one that I sold in the early 1980s.



WILLIAM R. & TERESA F. KURAU, Lampeter, Penn. — Arms of New York Ceramic 10-inch soup plate with New York State Coat of Arms depicting Liberty and Justice on either side of a shield with a banner below it that reads “Excelsior” and an eagle above. Made by Thomas Mayer, circa 1825, in Staffordshire, England, for export to the United States. Ex Zamoiski Collection.



PIONEER FOLK ANTIQUES, Ellsworth, Maine — Two very unusual stone animal garden ornaments: a badger (21 inches long) retaining a portion of its distinctive white stripe, and a bee (10 inches long). Both pieces have a nicely weathered patina surface.



DAVID ZABRISKIE, Lake Placid, N.Y. — Victorian carved dog headed folding armchair in the style of Herter Brothers, incised with original color, old finish.



COLETTE DONOVAN, Merrimacport, Mass. — Rare, iron-weighted, standing rush light, 60 inches tall, Seventeenth/early Eighteenth Century American.



19th century original
lodge hall carved wooden hands

What we have All been missing.
THE HUMAN TOUCH

Thomas C Clark Antiques
Francestown NH 03043
603-494-1630

DAVID & DONNA KMETZ AMERICAN PAINTINGS

Phone: 508-476-2214 | www.donnakmetz.com | donnakmetz@charter.net



Thomas K. Eaton (1901 – 1988)



Edward Buyck (1888 – 1960)



Jay Hall Connaway, N.A. (1893 – 1970)

August 11 & 12



J&G ANTIQUES, Amityville, N.Y. — Early copper candy cauldron on wrought iron stand.



SAMUEL HERRUP ANTIQUES, Sheffield, Mass. — Rare Westwald stoneware pitcher with the initials “AR” (Queen Anne), circa 1710, height 6 inches.

SAMUEL HERRUP ANTIQUES, Sheffield, Mass. — Classic maple John Gaines side chair, circa 1730, height 41 inches.



AARNE ANTON/NEXUS SINGULARITY, Pomona, N.Y. — Cast iron smiling bear doorstop, Nineteenth Century, 6 inches long.



A 15" tall Bellarmine dated 1661 along with other early ceramics and metals



A group of Bristol County earthenware jars



A rare pair of blown petticoat base whale oil lamps, Sandwich Glass Factory c. 1825



Two large and wonderful California Mission baskets, c. 1900

BRIAN CULLITY



Watercolor of a Great Gibbon, one of several works to be offered by William Goodall, c. 1800

18 Pleasant Street, P.O. Box 595 | Sagamore, MA 02561 | (508) 888-8409
brian@briancullity.com | www.briancullity.com





Our Tenth Year!

Come and Make a Connection!



Dealers From The Beginning...

A Bird in Hand
Mark and Marjorie Allen
American Spirit Antiques
Antiques Associates of West Townsend *
Colette Donovan
Norman Gronning Antiques
Heller Washam Antiques
Samuel Herrup Antiques
James M. Kilvington, Inc.

Greg Kramer & Co.
John Hunt Marshall
Hilary and Paulette Nolan
Steven S. Powers
Derik Pulito
John Keith Russell
Elle Shushan
Lana Smith
Elliott and Grace Snyder

