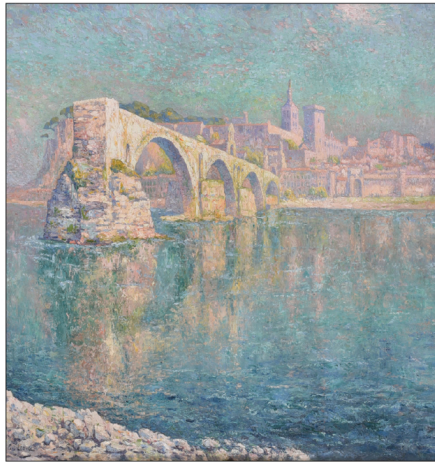


Featuring An Important Large Work by Milton Avery, Property from the Collection of Dudley and Constance Godfrey, Fine American, European, & Southern Art, Decorative Arts, Silver, Jewelry, and Furniture



Milton Avery
Birds Over Sea, 1957



Paul Leduc
*Pont d'Avignon (Pont Saint-Bénézet),
Avignon, France*



Marius Michel
The Artist's Studio, 1892



François Brunery
His Eminence's Monkey



John Emms
*one of two, Huntsmen and Hunt Staff at
Earth with Hounds and a Terrier*



**Pair Louis XV Carved Marble Top
Console Tables**
one of a pair, French, 18th century



Textiles from the Collection of Dudley and Constance Godfrey
*including Fine Charles I Raised Silk and Lace Needlework and Charles II Silk Biblical
Needlework*



Collection of Estate and Fine Jewelry
*including Edwardian Platinum and Diamond Necklace,
Rare Patek Philippe 18kt. Pocket Watch*



**Rare North Carolina
Chippendale Desk and Bookcase**
James Gheen school, Rowan County



American Art
*including David Hagerbaumer,
Bobwhite Quail*



Art Glass
*including Daum Nancy Art Glass Lamp with
Sunset Landscape*



Collection of Decorative Arts
*including Rare Early English Delftware
Punch Bowl*



English, French, and Tiffany Silver
*Queen Anne English Silver Covered Two
Handle Cup*



Collection of Coins
1885-CC Morgan Dollar