

THE WINTER SHOW

SPECIAL SHOW SECTION

THE WINTER SHOW

A Benefit for
East Side House

5,000 Years of Art,
Antiques & Design

January 24–
February 2
2020

Opening Night Party
January 23

Park Avenue Armory
New York City

thewintershow.org

Lead
Sponsor

CHUBB®

2020 Loan Exhibition
*Unrivaled: The Hispanic
Society Museum & Library*

Loan Exhibition
Sponsor


FIRST REPUBLIC

Mary Tucker, *Boy with a Blue Vest Holding a Book*, Courtesy of David A. Schorsch and Eileen M. Smiles

THE WINTER SHOW

SPECIAL SHOW SECTION

BARBARA ISRAEL
GARDEN ANTIQUES

A terra-cotta figure of a youthful, curly-haired Eros, seated on a stump with proper left leg resting on proper right knee, holding a heart in his hand, with bow resting in the crook of his arm, and a quiver with arrows slung over his shoulder, on circular pedestal with swags, American, ca. 1930. Overall 42 ins, high.

Barbara Israel Garden Antiques specializes in the finest antique garden ornament and furniture from Europe and America.

Call to inquire about our on-site ornament placement and design services.



By Appointment • Katonah, NY • 212-744-6281 • www.barbaraisrael.com

THE
WINTER
SHOW

January 24–
February 2, 2020



In
Dialogue

Saturday, January 25
2:30 PM

The Promotion of Hispanic Culture Featuring Philippe de Montebello & Mitchell Coddling

4:30 PM

Victorian Radicals
Presented by American Federation of Arts

Sunday, January 26
2:30 PM

Opportunities and Perspectives in Collecting Asian Art
Presented by Asia Week New York

Monday, January 27
11:00 AM

Passion for Collecting
Presented by Chubb

5:30 PM

The Aesthetics of Femininity through the Ages
Presented by ArtTable

Wednesday, January 29
5:00 PM

Curious Objects
Presented by The Magazine Antiques

Saturday, February 1
12:30 PM

The Past is Present: Ancient Inspiration for Contemporary Effect with Achille Salvagni & Pilar Viladas

2:30 PM

Duveen Brothers: Tricks of the Trade from the Greatest Art and Antique Dealers of the Twentieth Century with Charlotte Vignon

Saturday, February 1
4:30 PM

In Defense of Ornament
Presented by The Magazine Antiques

Sunday, February 2
1:00 PM

Earth & Fire: Four Millennia of Hispanic Ceramics
Presented by Hispanic Society Museum & Library

3:00 PM

The Values of Hispanic Art Traditions
Presented by Hispanic Society Museum & Library

THE WINTER SHOW

SPECIAL SHOW SECTION

GEMINI ANTIQUES, LTD.



FOR TICKETS OR ADDITIONAL INFORMATION CONTACT ONE OF US:

STEVEN WEISS
212-729-0011
sweiss57@me.com

RAY HARADIN
412-343-8733
raytoys@aol.com

BRE DAY
412-841-0623
bremarieday@gmail.com

LEON WEISS
917-991-7352
leonweiss@me.com

THEWINTERSHOW.ORG

THE WINTER SHOW

SPECIAL SHOW SECTION

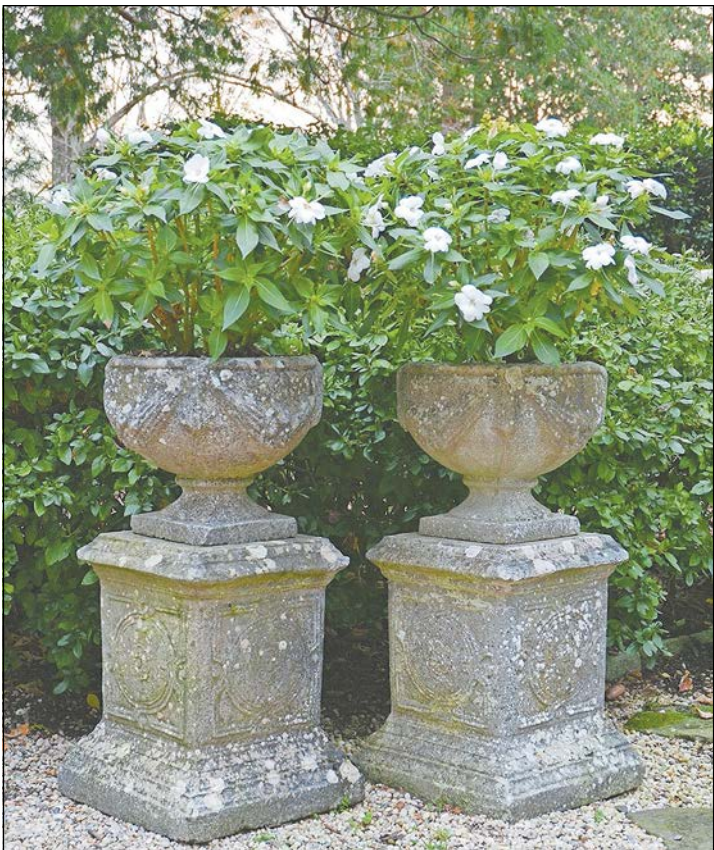
H. BLAIRMAN & SONS LTD

Furniture and Works of Art



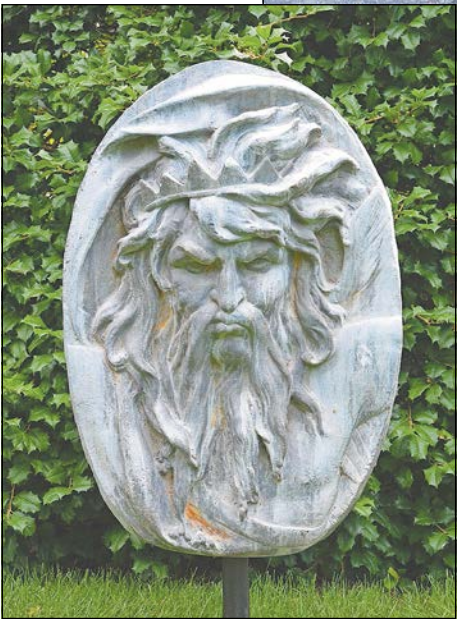
from 9th December 2019 our address will be
15, Queen Anne's Gate, London, SW1H 9BU

+44 (0)20 7493 0444
blairman@blairman.co.uk
www.blairman.co.uk



BARBARA ISRAEL GARDEN ANTIQUES, Katonah, N.Y. — A pair of composition stone planters with swag and tassel motif, each atop a square pedestal with portrait medallions on the four sides, English, circa 1960, with a 33-inch overall height.

BARBARA ISRAEL GARDEN ANTIQUES, Katonah, N.Y. — A composition stone swan is rendered in an Art Deco style, American, circa 1930, 54 inches high.



BARBARA ISRAEL GARDEN ANTIQUES, Katonah, N.Y. — A lead wall ornament with a mask of a bearded, crowned mythological figure, English, circa 1940, 37½ inches high.

BARBARA ISRAEL GARDEN ANTIQUES, Katonah, N.Y. — A lidded terracotta urn, with white-washed finish, the body with floral and ribbon swags and lion masks, French, circa 1880, on associated composition stone fluted columnar base, American, circa 1980. Overall height 70 inches. Provenance: Ex-collection historic 1805 Hudson Valley estate.



THE WINTER SHOW

SPECIAL SHOW SECTION

2020 Exhibitors

A La Vieille Russie, Inc.
 Adelson Galleries, Inc.
 Alexander Gallery
 Apter-Fredericks
 Arader Galleries
 Aronson of Amsterdam
 Michele Beiny, Inc.
 Carswell Rush Berlin, Inc.
 H. Blairman & Sons Ltd
 Daniel Blau
 Jonathan Boos
 Bowman Sculpture
 Browse & Darby
 Ralph M. Chait Galleries, Inc.
 Cohen & Cohen
 Thomas Colville Fine Art
 Cove Landing
 Daniel Crouch Rare Books
 Didier Ltd
 Donzella
 Charles Ede
 Peter Fetterman Gallery
 Peter Finer
 Gemini Antiques Ltd.
 Michael Goedhuis
 Bernard Goldberg Fine Arts, LLC
 James Graham-Stewart
 Martyn Gregory
 Thomas Heneage Art Books
 Hill-Stone, Inc.
 Hirschl & Adler Galleries
 Hirschl & Adler Modern
 Hyde Park Antiques, Ltd.
 James Infante
 Barbara Israel Garden Antiques
 Kentshire
 Keshishian
 Kelly Kinzle
 Koopman Rare Art
 Lebreton
 Les Enluminures
 Bernard & S. Dean Levy Inc.
 Lowell Libson & Jonny Yarker Ltd
 Nathan Liverant and Son, LLC
 Lobel Modern
 Lost City Arts
 Macklowe Gallery, Ltd.
 Maison Gerard
 Menconi + Schoelkopf
 Patrick & Ondine Mestdagh
 Joan B Mirviss Ltd
 Lillian Nassau LLC
 The Old Print Shop, Inc.
 Gerald Peters Gallery
 Ronald Phillips Ltd
 Plektron Fine Arts
 Red Fox Fine Art
 James Robinson, Inc.
 David A. Schorsch ~ Eileen M. Smiles
 American Antiques
 Schwarz Gallery
 S.J. Shrubsole
 Elle Shushan
 Robert Simon Fine Art
 Spencer Marks
 Tambaran
 Carolle Thibaut-Pomerantz
 Thistlethwaite Americana
 Erik Thomsen
 Throckmorton Fine Art, Inc.
 Wick Antiques Ltd
 Robert Young Antiques
 Pavel Zoubok Fine Art

THE WINTER SHOW

A Benefit for
East Side House

January 24–
February 2, 2020

Park Avenue Armory
New York City

Diego Velasquez, *Camilo Astalli, known as Cardinal Pamphili*, Courtesy of Hispanic Society Museum & Library

THE ART, DESIGN & ANTIQUES SHOW at Wallace Hall
SPECIAL SHOW SECTION

**THE ART, DESIGN
&
ANTIQUES SHOW**
JANUARY 24-26, 2020

Wallace Hall

Church of St. Ignatius Loyola
980 Park Avenue at 84th St
New York, N.Y. 10028

Friday 10am-7pm
Saturday 11am-6pm
Sunday 11am-5pm

Admission \$20

Rehshows.com



(516) 971-7710

THE ART, DESIGN & ANTIQUES SHOW at Wallace Hall
SPECIAL SHOW SECTION

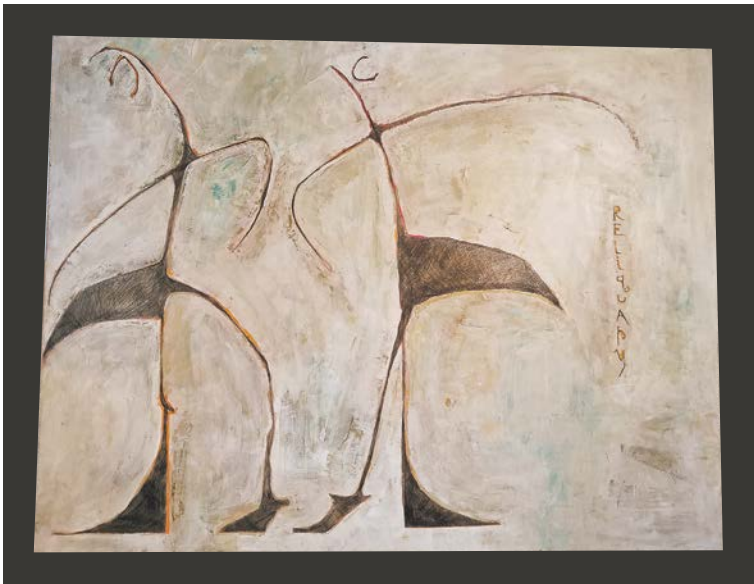


DAVID B. SMERNOFF, FINE ART AND ANTIQUES, Hamden, Conn. — “Matadors Celebration,” by Vidal Arenal (1859-1925), oil on board, measuring 14 by 20 inches, is signed and dated 1897.



DAVID B. SMERNOFF, FINE ART AND ANTIQUES, Hamden, Conn. — “The Walk Home” by Alex Fournier (1865-1948), oil on canvas, circa 1895, measures 19 by 28 inches.

PAUL DOUGLAS
GALLERY



Jon James, 2000
“Relequary, I.” 54” x 72” Acrylic and Ink on Canvas

The ballet Relequary is a tribute to George Balanchine and Igor Stravinsky. The painting is a tribute to the ballet, so inscribed, signed, and dated on the back by the artist.
This is one piece of a single-owner art collection that we will be offering at the Wallace Hall Show.

Exhibiting at these shows:

Jon Jenkins’ Nashville Antique Show, February 13-15, 2020
Chester County Antiques Show, March 13-15, 2020



Paul Douglas Gallery is affiliated with Firehouse Antiques
100 & 102 North Main Street • Galena, Maryland 21635
OPEN Tues. thru Sun. • 10AM to 5PM • 410.708.4085

James Peale
1749-1831



“Still life with Quince”
circa 1820’s
oil on canvas, 10 x 14 inches

Leonardo Bistolfi
1859-1933



Exposition Internationale
des arts Decoratifs Modernes
1902
lithograph on paper, 42 x 58 inches

David B Smernoff
FINE ART AND ANTIQUES

www.davidsmernoff.com
davidsmernoff@gmail.com
[davidbsmernoff@instagram](https://www.instagram.com/davidbsmernoff)
203-430-6634

THE ART, DESIGN & ANTIQUES SHOW at Wallace Hall
SPECIAL SHOW SECTION



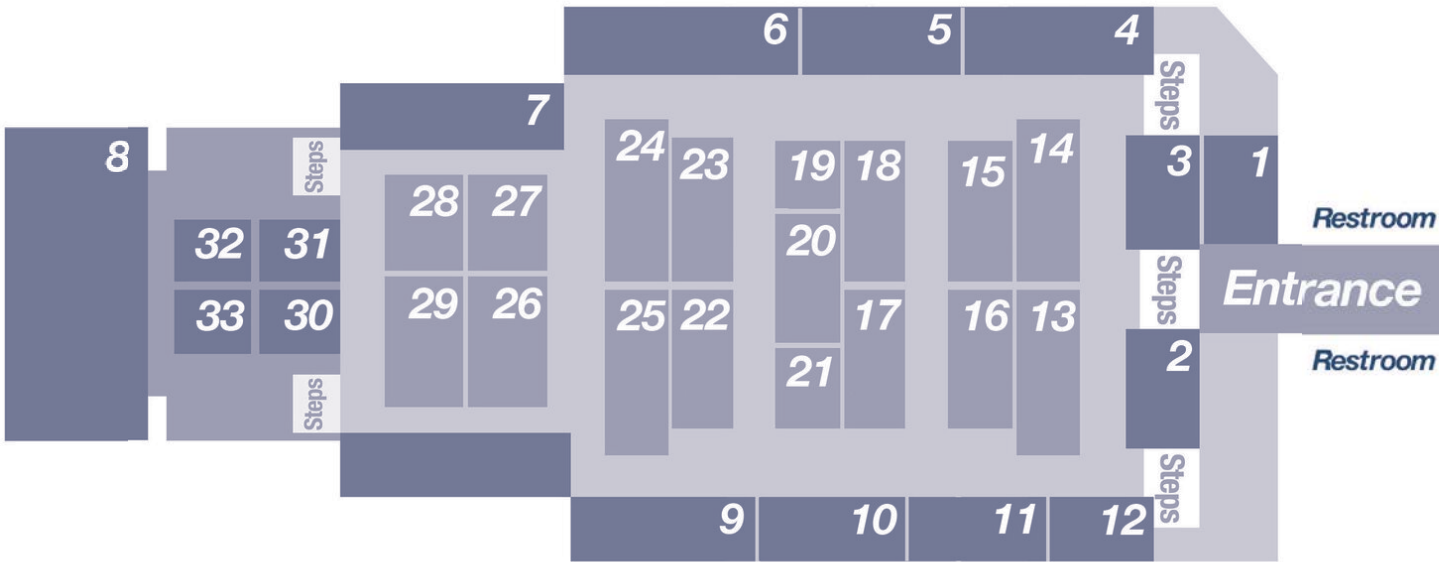
J. Gallagher
Box 69, North Norwich, New York 13814

www.antiqueandirons.com

TALLY-HO ● ● ● Coming

(607) 334-4020
cell (607) 316-7705
cell (904) 537-3543

THE ART, DESIGN
& ANTIQUES SHOW
JANUARY 24-26, 2020



- | | | |
|---------------------------------------|--------------------------------|---|
| 1. TRIFLES | 13. Michael Pashby | 25. Shaia Oriental Rugs of Williamsburg |
| 2. Richard Schillay Fine Art | 14. Clinton Howell | 26. Greg Pepin Silver |
| 3. J. Gallagher Antiques | 15. Jeffrey Tillou Antiques | 27. T.J. Antorino Antiques & Design |
| 4. Brad & Vandy Reh Fine Jewelry | 16. Lee Fine Art | 28. Imperial Fine Books & Oriental Art |
| 5. Sundial Farm | 17. Alberto Santos | 29. Jayne Thompson Antiques |
| 6. Earle D. Vandekar of Knightsbridge | 18. Silver Art by D & R | 30. David Smernoff |
| 7. Potterton Fine Books | 19. Sue Brown Antique Jewelry | 31. Carole Pinto Fine Arts |
| 8. Glen Leroux Antiques | 20. Christine Magne Antiquaire | 32. The Spare Room |
| 9. Framont Fine Art | 21. Andrew Spindler Antiques | 33. Paul Douglas Gallery |
| 10. Marcy Burns American Indian Arts | 22. Lotus Antiques | |
| 11. A Bird In Hand | 23. European Decorative Arts | |
| 12. Betty Krulik Fine Art | 24. Tutto dal Mondo | |



THE ART, DESIGN & ANTIQUES SHOW at Wallace Hall
SPECIAL SHOW SECTION



ANDREW SPINDLER ANTIQUES & DESIGN, Essex, Mass. — The striking septarian stone top of a William IV rosewood gueridon, 16¾-inch diameter, Scottish, circa 1840.

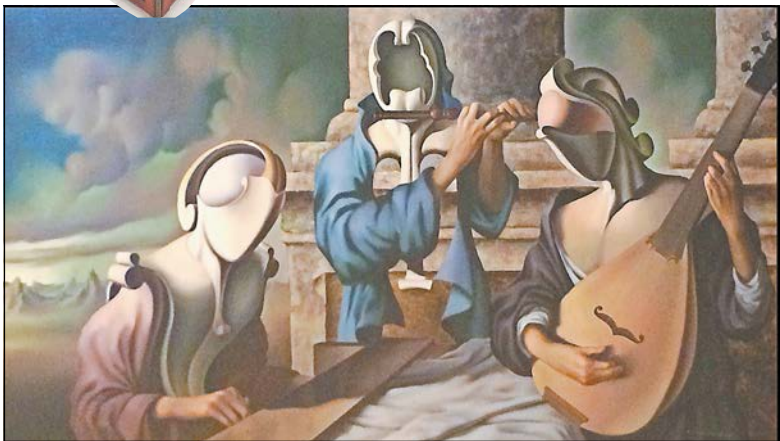
ANDREW SPINDLER ANTIQUES & DESIGN, Essex, Mass. — A very tall red tole parade lantern, measuring 34½ inches tall, 9½ inches wide and 9½ inches deep.



DAVID B. SMERNOFF, FINE ART AND ANTIQUES, Hamden, Conn. — Still life with flowers, urn and fruit by Cornelis Lens (1713-1770), oil on canvas, signed and dated “1740/ Antwerp,” measures 57 by 39 inches.



ANDREW SPINDLER ANTIQUES & DESIGN, Essex, Mass. — A William IV rosewood gueridon with septarian stone top, Scottish, circa 1840, 16¾-inch diameter, 30 inches high.



DAVID B. SMERNOFF, FINE ART AND ANTIQUES, Hamden, Conn. — “Concertino Rinascentista,” 1972 by Vito Campanella (1932-2014), oil on canvas, measuring 28 by 47 inches.



ANDREW SPINDLER ANTIQUES & DESIGN, Essex, Mass. — A beautifully detailed Aesthetic Movement-style fireplace fender in steel, with a sunburst in the center, flanked by scrolls and grid fencing. Measurements are 9 inches high, 69¼ inches wide by 13 inches deep.

ISLE OF MAN MAHOGANY DINING TABLE WITH BROGUE SHOE FEET, CIRCA 1880



A fine quality, unusual extension dining table from the Isle of Man, in richly colored and figured mahogany, the rectangular top with D-shaped ends supported by two pedestals raised on tripod legs, carved as human legs wearing carved brogue shoes, circa 1880.

Height: 30” Width: 95 1/4” (with leaf) Depth: 48 1/2” Width of leaf: 24”



ANDREW
SPINDLER
ANTIQUES & DESIGN

163 MAIN STREET, ESSEX MA 01929
TEL: 978.768.6045
EMAIL: INFO@SPINDLERANTIQUES.COM
WWW.SPINDLERANTIQUES.COM



SPECIAL
SHOW
SECTION

THE NEW YORK ANTIQUE CERAMICS FAIR • JANUARY 23-26, 2020
THE BOHEMIAN NATIONAL HALL, 321 EAST 73RD ST., 3RD FLOOR, NYC 10021



MARIA & PETER WARREN ANTIQUES, Monroe, Conn. — A pair of English Staffordshire Disraeli spaniels, circa 1860.



MARIA & PETER WARREN ANTIQUES, Monroe, Conn. — An English creamware pineapple and basket tea pot, circa 1760-70.



CIRCA1775, Wallingford, Penn. — A Wedgwood jasper circa 1790, likely of the form presented to the Qianlong emperor of China in 1793. The reaction by the Chinese court: "All eyes were fixed on the vases, which were among the finest productions of Mr Wedgwood's art."

THE NEW YORK
ANTIQUÉ CERAMICS
FAIR RETURNS
JANUARY 23-26

NEW YORK CITY — The New York Antique Ceramics Fair, a New York exclusive boutique antiques exhibition and sales event of the year, will be conducted Thursday through Sunday, January 23-26 at the Bohemian National Hall.

Previously known as the New York Ceramics and Glass Fair, the show was rebranded in January 2019 to focus on antique ceramics. The Bohemian National Hall, at 321 East 73rd Street on the Upper East Side, is a short walk or cab ride from The Art, Design and Antiques Show, The Winter Show, Sotheby's and Christie's, and the many events and exhibitions of Winter Antiques Week. Admission to the fair is complimentary.

The small, beautifully appointed set of rooms at the Bohemia National Hall, provides the opportunity for collectors, curators, decorators and those who love fine objects a shopping experience unique to the city, with the finest material available in an intimate and elegant, yet laid back, setting. Top collectors and designers, as well as representatives from the Metropolitan Museum, Winterthur Museum, The Chipstone Foundation, and Colonial Williamsburg were sighted at the 2019 fair, where sales were brisk.

For additional information, www.nyceramicsfair.com.

Polka Dot Antiques

18th & 19th Century British
Pottery & British Art Pottery

914-548-8708

rhpwalker@gmail.com



Rare Martin Brothers Salt-Glaze Stoneware Figurine of a Potter at the Wheel, dated 1917, 6 1/2 inch high. RPW00447



Walton Staffordshire Royal Armorial Lion and Unicorn Spill Vase, c.1820-30, 6" x 6 1/4." RPW00414 Provenance – Property deaccessioned by the Colonial Williamsburg Foundation, Williamsburg, VA



Large Named and Dated Creamware Teapot and Cover, 1778, inscribed 'John Parker, Nettlebed, Oxfordshire, 1778,' 8 3/4." RPW00444

Named and Dated Creamware Charger, 1779, attributed to Humble, Hartley, Greens and Co., inscribed 'William & Betty Spyvy, 1779,' 14" diam. RPW00446.

Whieldon-type Cow Creamer & Cover with Calf, c.1755/65, 4 1/2". RW00126



Four Framed H & R Daniels Pattern Book Pages of Tea Wares, circa 1845/6, pages approx, 10 1/2" x 13." RPW00440



SPECIAL
SHOW
SECTION

THE NEW YORK ANTIQUE CERAMICS FAIR • JANUARY 23-26, 2020
THE BOHEMIAN NATIONAL HALL, 321 EAST 73RD ST., 3RD FLOOR, NYC 10021



MARIA & PETER WARREN ANTIQUES, Monroe, Conn. — A pair of English Bristol Polychrome enamel decorated delft chargers, circa 1750.



MARIA & PETER WARREN ANTIQUES, Monroe, Conn. — A rare pair of English Staffordshire gorillas, circa 1860.



MARIA & PETER WARREN ANTIQUES, Monroe, Conn. — An English Staffordshire spatterware horse in Pratt colors, circa 1820.



MARIA AND PETER WARREN, Monroe, Conn. — Whieldon-style coffee pot.



MARIA & PETER WARREN ANTIQUES, Monroe, Conn. — A wonderful blue and white Fitzhugh vase, circa 1810.



POLKA DOT ANTIQUES LLC, Waccabuc, N.Y. — Miniature Moorcroft "Moonlit Blue" vase, 1918-29.

"All eyes, however, were fixed on the vases..."



King George III in 1785

In 1792, King George III sent Lord Macartney on an embassy to the Qianlong Emperor in an attempt to open up trade between Great Britain and China. The embassy was a failure, the emperor refusing all the British requests.

The embassy took the finest gifts for the emperor that Britain could muster including a planetarium, scientific instruments, lustres, Argand lamps, firearms, steel from Sheffield, clocks by Vulliamy, the finest textiles – and six Wedgwood jasper vases.

From the official account of the embassy, written in 1797: "A number of persons went to view the presents for the emperor. Among the spectators, were three of the emperor's grandsons ... Some of the mandarines seemed to check any emotion ... and affected to consider every object as a work of ordinary merit."



The Qianlong Emperor in Old Age

All eyes were, however, fixed on the vases, which were among the finest productions of the late Mr. Wedgwood's art. Of porcelain, every Chinese is a judge. These specimens, of the beauty of European manufacture, were universally acknowledged and extolled.

Wedgwood snake-handled jasper vase marked WEDGWOOD, 16" high, c. 1790. A vase of this form was very likely presented to the emperor of China in 1793.

Visit **circa1775** at the New York Antique Ceramics Fair and experience the Wedgwood jasper that transfixed the court of the emperor of China.



circa1775

Wedgwood as an expression of neoclassicism

Celebrating 250 years of the Wedgwood and Bentley partnership at circa1775.com
Instagram @circa_1775
E-mail: woody@circa1775.com



Maria & Peter Warren Antiques

We have opened a brick and mortar establishment at 150 Main Street, Monroe, Conn., where you are able to see our many beautiful pieces—we hope you will drop by. Our hours 10-6, Tuesday-Friday and 11-6 on Saturday. Sunday and Monday are by appointment. We welcome your call at 203-984-6174 to schedule an appointment, or if you have any questions.

For over 20 years we have specialized in 18th and 19th Century English Ceramics, Chinese Export, Delft, Paintings, Early American furniture, and now vintage, mid-century modern and many beautiful decorative arts.

Just about anything to make your home distinctive.



A rare pair of English Staffordshire Saltglaze Agate cats with underglaze cobalt, c1750.



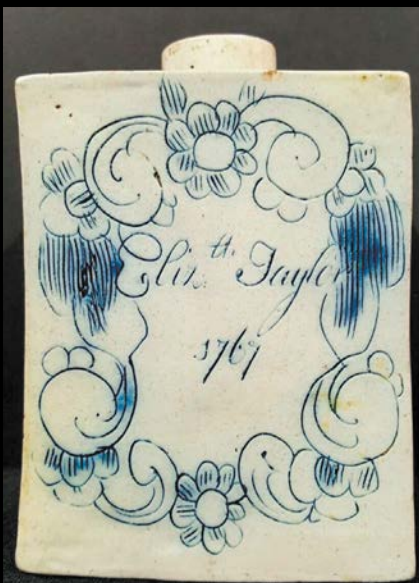
An English Staffordshire Cauliflower Tea Pot, c1750



An English Staffordshire Solid Agate Tea Pot on three mask and paw feet with a dog of fu knob, c1750.



A very rare and important George Jones English Majolica Ewer c1875 H 17.5" modeled after Bernard Palissy's 16th C original from the Soulage collection. Cobalt decorated with leaves, shells and lizards, a looped snake forming the handle all supported on a circular base with applied shells.



An English Saltglaze Scratch Blue Tea Caddy, impressed "Elizabeth Taylor" and dated, 1767, provenance: Irving Schorsh Collection.



An English Creamware Greatbatch Tea Pot, with enamel decoration of Aurora on her charriot, an ear lobe handle, molded spout, and a beautifully decorated enamel gallery, c1780-90



An English Staffordshire Creamware Landskip sauceboat, c1750-60



An English Stoneware Saltglaze brown and white Agate figure of 'Li Taiho' on a Lion. This figure is inspired by a Chinese Original, c1750. A similar piece is also in the Victor Collection.



Still Life With Anemones, Edward Chalmers Leavitt (1842-1904) Oil on Canvas, signed and dated, L/R

Upcoming Shows:

Washington Winter Show: Washington, DC January 10-12 | New York Antiques Ceramics Fair, Bohemian National Hall, NYC, January 23-26
Philadelphia Show, The Navy Yard, Philadelphia, April 24-26 | The Newport Antiques Show, Middletown, Rhode Island, July, 2020
The Delaware Antiques Show, Wilmington, DE, November, 2020

You can see our fine collections online at: www.warrenantiques.com

150 Main Street • Monroe, CT 06468 • 203-984-6174 • warrenantiques1@gmail.com