

THE ART, DESIGN & ANTIQUES SHOW at Wallace Hall
SPECIAL SHOW SECTION

THE ART, DESIGN & ANTIQUES SHOW

JANUARY 24-26, 2020

Wallace Hall

Church of St. Ignatius Loyola
980 Park Avenue at 84th St
New York, N.Y. 10028

Friday 10am-7pm
Saturday 11am-6pm
Sunday 11am-5pm

Admission \$20

Rehshows.com



(516) 971-7710

THE ART, DESIGN & ANTIQUES SHOW at Wallace Hall
SPECIAL SHOW SECTION

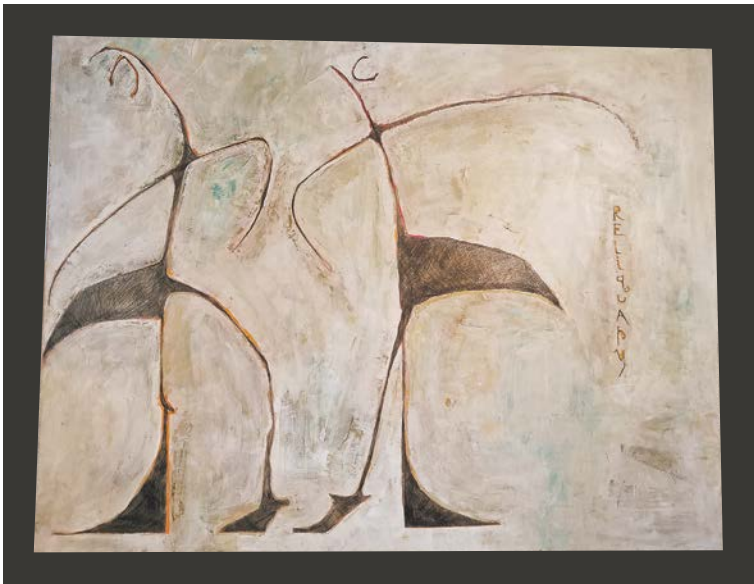


DAVID B. SMERNOFF, FINE ART AND ANTIQUES, Hamden, Conn. — “Matadors Celebration,” by Vidal Arenal (1859-1925), oil on board, measuring 14 by 20 inches, is signed and dated 1897.



DAVID B. SMERNOFF, FINE ART AND ANTIQUES, Hamden, Conn. — “The Walk Home” by Alex Fournier (1865-1948), oil on canvas, circa 1895, measures 19 by 28 inches.

PAUL DOUGLAS
GALLERY



Jon James, 2000
“Relequary, I.” 54” x 72” Acrylic and Ink on Canvas

The ballet Relequary is a tribute to George Balanchine and Igor Stravinsky. The painting is a tribute to the ballet, so inscribed, signed, and dated on the back by the artist.
This is one piece of a single-owner art collection that we will be offering at the Wallace Hall Show.

Exhibiting at these shows:

Jon Jenkins’ Nashville Antique Show, February 13-15, 2020
Chester County Antiques Show, March 13-15, 2020



Paul Douglas Gallery is affiliated with Firehouse Antiques
100 & 102 North Main Street • Galena, Maryland 21635
OPEN Tues. thru Sun. • 10AM to 5PM • 410.708.4085

James Peale
1749-1831



“Still life with Quince”
circa 1820’s
oil on canvas, 10 x 14 inches

Leonardo Bistolfi
1859-1933



Exposition Internationale
des arts Decoratifs Modernes
1902
lithograph on paper, 42 x 58 inches

David B Smernoff
FINE ART AND ANTIQUES

www.davidsmernoff.com
davidsmernoff@gmail.com
davidbsmernoff@instagram
203-430-6634

THE ART, DESIGN & ANTIQUES SHOW at Wallace Hall
SPECIAL SHOW SECTION

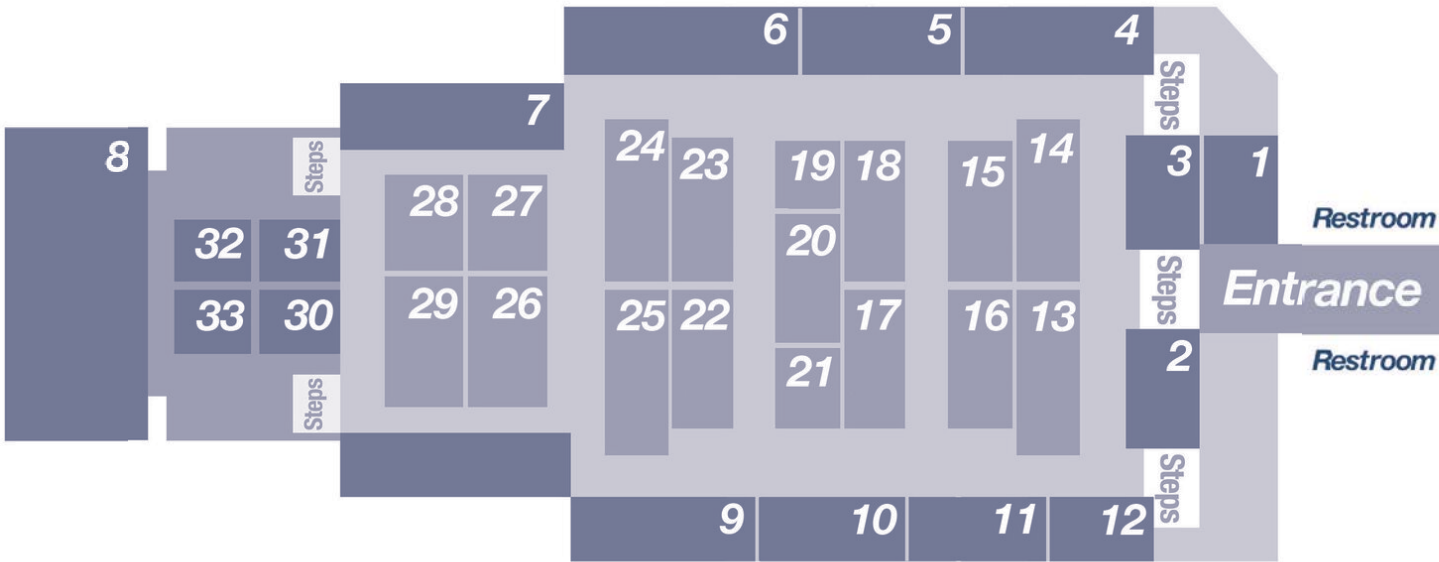


J. Gallagher
Box 69, North Norwich, New York 13814
www.antiqueandirons.com

TALLY-HO ●●● Coming

(607) 334-4020
cell (607) 316-7705
cell (904) 537-3543

THE ART, DESIGN
& ANTIQUES SHOW
JANUARY 24-26, 2020



- | | | |
|---------------------------------------|--------------------------------|---|
| 1. TRIFLES | 13. Michael Pashby | 25. Shaia Oriental Rugs of Williamsburg |
| 2. Richard Schillay Fine Art | 14. Clinton Howell | 26. Greg Pepin Silver |
| 3. J. Gallagher Antiques | 15. Jeffrey Tillou Antiques | 27. T.J. Antorino Antiques & Design |
| 4. Brad & Vandy Reh Fine Jewelry | 16. Lee Fine Art | 28. Imperial Fine Books & Oriental Art |
| 5. Sundial Farm | 17. Alberto Santos | 29. Jayne Thompson Antiques |
| 6. Earle D. Vandekar of Knightsbridge | 18. Silver Art by D & R | 30. David Smernoff |
| 7. Potterton Fine Books | 19. Sue Brown Antique Jewelry | 31. Carole Pinto Fine Arts |
| 8. Glen Leroux Antiques | 20. Christine Magne Antiquaire | 32. The Spare Room |
| 9. Framont Fine Art | 21. Andrew Spindler Antiques | 33. Paul Douglas Gallery |
| 10. Marcy Burns American Indian Arts | 22. Lotus Antiques | |
| 11. A Bird In Hand | 23. European Decorative Arts | |
| 12. Betty Krulik Fine Art | 24. Tutto dal Mondo | |



THE ART, DESIGN & ANTIQUES SHOW at Wallace Hall
SPECIAL SHOW SECTION



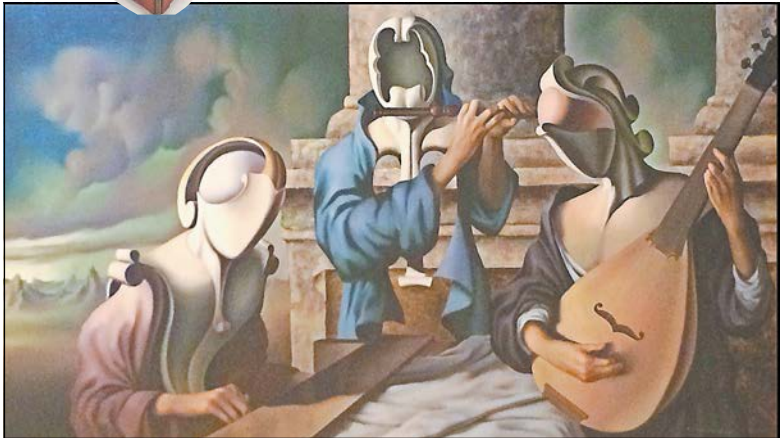
ANDREW SPINDLER ANTIQUES & DESIGN, Essex, Mass. — The striking septarian stone top of a William IV rosewood gueridon, 16¾-inch diameter, Scottish, circa 1840.



DAVID B. SMERNOFF, FINE ART AND ANTIQUES, Hamden, Conn. — Still life with flowers, urn and fruit by Cornelis Lens (1713-1770), oil on canvas, signed and dated “1740/ Antwerp,” measures 57 by 39 inches.



ANDREW SPINDLER ANTIQUES & DESIGN, Essex, Mass. — A William IV rosewood gueridon with septarian stone top, Scottish, circa 1840, 16¾-inch diameter, 30 inches high.



DAVID B. SMERNOFF, FINE ART AND ANTIQUES, Hamden, Conn. — “Concertino Rinascentista,” 1972 by Vito Campanella (1932-2014), oil on canvas, measuring 28 by 47 inches.



ANDREW SPINDLER ANTIQUES & DESIGN, Essex, Mass. — A beautifully detailed Aesthetic Movement-style fireplace fender in steel, with a sunburst in the center, flanked by scrolls and grid fencing. Measurements are 9 inches high, 69¼ inches wide by 13 inches deep.

ISLE OF MAN MAHOGANY DINING TABLE WITH BROGUE SHOE FEET, CIRCA 1880



A fine quality, unusual extension dining table from the Isle of Man, in richly colored and figured mahogany, the rectangular top with D-shaped ends supported by two pedestals raised on tripod legs, carved as human legs wearing carved brogue shoes, circa 1880.

Height: 30” Width: 95 1/4” (with leaf) Depth: 48 1/2” Width of leaf: 24”



ANDREW
SPINDLER
ANTIQUES & DESIGN

163 MAIN STREET, ESSEX MA 01929
TEL: 978.768.6045
EMAIL: INFO@SPINDLERANTIQUES.COM
WWW.SPINDLERANTIQUES.COM

