

Winter Associates

Auctioneers & Appraisers

AUCTION: Monday, August 12th, 6:30pm

Previews: 8/11, 2-4pm; 8/12, 3-6:15pm or by appt.

Paintings; 20th C. Prints; Cabinet Made and Antique Furniture;

Silver; Asian; Books; Dolls & Toys; Vintage Clothing, etc.

View catalog online at www.AuctionsAppraisers.com

Auctions streamed live on Invaluable.com



Attr. H. Camp, "Canadian Rockies"



Ohara Shoson



A. Thieme, oil, 19" h.



John Whorf, wc, 15" h.



19th C. American silver



Yunkers



Whiting "Radiant" 78 pcs



Ives; Steiff; SFBJ



H. Meyer, oil, 23" h.



D. Lefort queen; Persian



Engvall, custom tiger maple



Vintage, 100+ pcs



Chinese Export



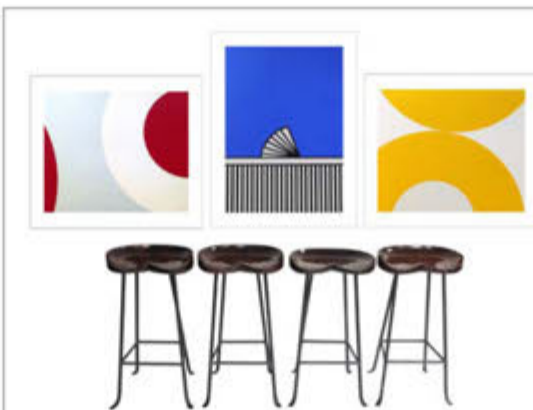
Antique Persian, 16'



J. McGuire, fig. maple & cherry



Inlaid mahogany



Nassos Daphis; N. Krushenick; custom-made stools



Favela type; Huse



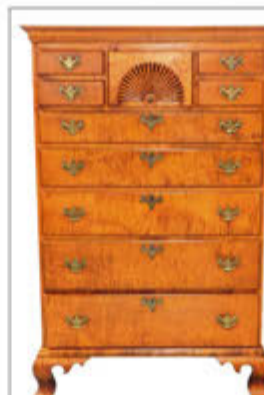
Americana



Ingersoll; Engvall



Eldred Wheeler, etc.



Lefort fig. maple



8 Warren Chair Works; 20th C. grain-painted

Paintings; 20th C. Prints; Cabinet Made and Antique Furniture; Silver; Asian; Books; Dolls & Toys; Vintage Clothing, etc.

Paintings: Anthony Thieme, oil, Auribeau, France; John Whorf, watercolor, "From the Cliffs"; Attributed to Harold Morgan Camp, oil, "The Steeples in the Hughes Range, Bull River, British Columbia"; landscape of Peckham lake, Peckham family provenance; and Herbert Meyer, oil, summer pastoral scene; also: R. Beal, watercolor; H. DuMond, oil; A.C. Hansen, watercolor on paper; A. Kaufhold, oil; T. Lambrecht, mixed media; N. Little, oil; A. Lund, oil; T. Nelson, oils (4); W. Plummer, oil; Bissell Phelps Smith, oil; C. dan Veillo, oil; R. Woodberry, two oils; and other 19th/20th oil and watercolor portraits, landscapes, and still lifes.

20th C. Prints & Drawings: A.D. de Segonzac, seventeen etchings, fourteen ink drawings, and one watercolor; Also: E.C. Biddle, lithographs (2); J.T. Bowen, lithographs (2); Chagall, "Adam et Eve et le fruit defend", color lithograph; N. Daphis, silkscreens (3); E. Fiene, pastel; M.T. Gloeckner, lithograph; F.G. Hall, etching; R. Harden, lithograph; S. Horan, two lithographs; N. Krushenick, lithographs (4); Marisol, lithographs (5); D.P. Noyer, lithographs (2); M. Vertes, graphite; Adja Yunkers "Portfolio of Five Prints". See Also: Asian.

Cabinet Made Furniture: Michael Dunbar, Windsor bench with green paint finish. Robert Engvall (Canton, CT): figured maple dining table, 118" L; Shaker design tall cabinet/dresser, cherry; sideboard, figured maple; birds-eye maple media cabinet; two door cabinet, cherry; Shaker style figured maple single drawer stand; figured maple stand; birds eye maple stand; school master slant lid desk; two custom-made saddle seat tall bar stools, one spalted maple; "Favela" type chair. Ian Ingersoll, lithographs (4); Marisol, lithographs (5); D.P. Noyer, lithographs (2); M. Vertes, graphite; Adja Yunkers "Portfolio of Five Prints". See Also: Asian.

Antique Furniture: 19th C.: Early Primitive lift top chest; painted lift top blanket chest; American desk, pine with slant lid; dough box; Pie safe; Hepplewhite chest of four graduated drawers with inlay; Set of six chairs, English, George III, mahogany; Sawbuck dining table, pine top, pine and oak supports; Single drawer country server; school master desk and a dry sink, both American; Grain bin, pine, old blue paint over green; Trestle table, pine; Victorian carved chair; Victorian

walnut table with white marble cut corner top; Victorian cylinder roll top desk.

Fine Furnishings: John K. Spicer & Sons Queen Anne form single drawer stand; Queen Ann style tea table, figured maple; Queen Anne style candlestand; Hepplewhite style chest of four serpentine drawers; Pair of Hepplewhite style Pembroke tables with inlay; Two ladderback side chair with rockers; Two Federal style tables from Bartley Reproductions; Empire style chair with rolled arms; Two-piece corner cabinet with broken pediment crest; Pair of lolling armchairs, blue upholstery with bird motif; Tall chest, Chippendale form, cherry colored finish; Leather wing chair, Chippendale style; Chippendale style "Deerfield" camel back sofa; J.J. Hyde Co., Newton, N.C., "Tribeca Rustic Leather Tight Back Club Chair and Ottoman"; Grain painted linen press, two part cabinet with decorative sponge painting; Diminutive four graduated drawer dresser, cherry case with birds-eye maple drawer fronts; oak barrister bookcase, manufactured by The Herkimer, F.E. Hale Mfg. Co., N.Y.; Palliser (Winnipeg, Canada) contemporary forest green leather recliner and ottoman; Wing chair with blue and cream striped ikat fabric; Lolling armchair with red, white, and blue striped upholstery with stars; French style carved and upholstered sofa; two small wall mirrors, one figured maple.

Silver: Peter & William Bateman forks (12); S. Kirk & Son coin silver covered butter dish; Whiting "Radiant" sterling flatware (74) and servingware (4); Vincent LaForme & Brother, coin water pitcher; English Georgian, c. 1800, sterling pair of candle sticks; J.E. Caldwell marked, sterling oval pierced repousse bowl; Haddock Lincoln & Foss coin early American silver urn; Tiff & Whiting mid-19th C. Massachusetts knives (12); other silver including: S. Kirk and Son repoussé ice tea spoons (6) and a cheese server, Mayflower dessert forks (6); Shiebler pastry/pie forks (12); and bamboo pattern hollow straw handle ice tea spoons, marked Hong Kong (6).

Asian: 18th/19th C. Chinese Export: Armorial porcelain (18); and 125+ pieces of Chinese export porcelain including Canton and Nanking, some with grisaille and famille rose. Chinese altar style table, late 19th/20th C.; Sumida Gawa bowl; Imari bowls (2); and Japanese Woodblock Prints: Hiroshige (3); Yoshitara Takaido; Tsuchiya Koitsu (2); Ohara Shoson; Kawase Hasui; Utamaro; Torii Kiyomine; and Hosoda Eishi.

Books: Collection of books and pamphlets by or with illustrations by Denoyer De Segonzac, including: Roger-Marx, "Une Force, Dunoyer de Segonzac Pour Les Amis du Docteur Lucien Graux"; Loire, Aimee & Cailler, Pierre, "Catalogue de L'Oeuvre Grave de Dunoyer de Segonzac", 8 vol., Geneve (1958); "Dunoyer De Segonzac, Dessins, 1900 -1970" (2); Ronsard, Pierre de, "Quelque Sonnets de Ronsard", Paris (1955); Denoyer de Segonzac, XXX Dessins..., Paris 1900 - 1970; "Las Papillotos de Jasmin Coiffur, 1825 - 1835", 3 vols., Agen (1835);

Pierre Blanchard, "Le Buffon de la Jeunesse...", 4 vols., Paris (1801); Mrs. F. Nevill Jackson, "A History of Hand-Made Lace", London (1900); Also, 70+ volumes of books on the arts of Asia; 80+ Civil War books; books on interior design (34).

Dolls & Toys: Dolls: 20" SFBJ, Unis France #301; 22" Heubach Koppelsdorf #275; Ernest Heubach 12"; 12" Eichhorn & Sohn; 24" Armand Marseille "Queen Louise"; Heinrich Handwerk; A.W. Special Germany; Schoenau & Hoffmeister; Heubach Koppelsdorf; and 20th C. dolls; along with doll clothing and accessories. Trains: 200+ pieces of Ives, Lionel, and Mar trains, tracks, and accessories. Five large vintage Circus trains; many Steiff animals; Lithographed tin "Pet's Toy Grocery Store" with tin shop accessories; lithographed stable; red fire engine pedal toy; child's tricycle, etc.

Vintage Clothing: 80+ pieces of women's vintage clothing, including: Edwardian women's blouses, white skirts, petticoats, silk full length skirt, dresses, undergarments, etc.; 30+ pieces of Victorian lace trim, scrap beaded women's shirt collars, lace collars and lace remnants, doll sewing patterns; 20+ Children's clothing including: white baby bibs, gowns, children's dresses, socks, baby bonnets, and baby overalls, blue wool and cotton bathing suits; 20+ pieces of Men's vintage including men's WWI three Army/Calvary jodhpurs (3) and hats (2); Also: assorted hat feathers and scrap hats; and paisley wool shawls (3).

Oriental Rugs: Antique Persian Kirman, 16' x 9' 10" (worn); Persian Serab long rug, 3' x 6' 10"; Persian MacLagan, 6' 10" x 4' 3"; Persian Hamadan, 6' 6" x 3' 6"; Caucasian Karabagh, 4' 6" x 7' 7". Semi-Antique Persian Hamadan/ Malayer scatter rug, 4' 10" x 2' 7"; Karaja runners, approximately 2' x 5' (2). Modern: Caucasian style, 6' 8" x 6' 8"; Persian Hereiz, 8' x 10"; Turkish style carpet, 8' 4" x 5' 10"; Turkish style runner, 11' 9" x 3' 3"; Afghan carpet, 6' 7" x 10"; Turkish Azeri, 5' x 7' 9"; Peshawar Mahal, 4' 8" x 6' 3"; Uzbek Tabriz; runner, 2' 7" x 9' 9"; Uzbek Kazak, 2' 2" x 5' 10".

Important Misc.: Robert Engvall (Canton, CT) graduated burlwood bowls (4); Figured maple and cherry boxes by makers David Lefort, Eldred Wheeler and Orleans; Ceramics: Redware charger; Mochaware bowl; Moorcroft vase; Buffalo Pottery Deldare Bowl. Glass: Glass paperweights, including Tiffany & Co., Baccarat, Abelman, and Adrian Sankey; Orrefors and Steuben bowls; Pair of ruby cut to clear glass garnitures; Also: Early stone arrow heads (10); Petrified wood trunk with bark pattern; Colonial Williamsburg sundial; 19th C. Tole travel chest; Vintage jewelry and accessories (35+); Pocket watches (9); Gone with the Wind brass lamp; 19th C. sword with scabbard. Textiles: hooked rug, with rabbits, 20" h. x 39" w.; quilts (3), including two Amish, along with Mrs. F. Nevill Jackson, "A History of Hand-Made Lace", London (1900).

