



SPECIAL  
SHOW  
SECTION

THE 62ND ANNUAL  
New Hampshire Antiques Show



THE  
62<sup>ND</sup>



ANNUAL

New Hampshire  
Antiques Show

Melissa Alden • Kate A. Alex & Co. • American Sampler • Barbara Ardizzone Antiques • Axtell Antiques • Pam & Martha Boynton • Brock & Co. • Hollis Brodrick • John Chaski Antiques • Cherry Gallery • Paul & Linda DeCoste • Dennis & Dad Antiques • DeWolfe and Wood • Christopher & Bernadette Evans Antiques • Brian J. Ferguson • M. Finkel & Daughter • Nancy Fishelson • Robert T. Foley Antiques • Samuel W. Forsythe Antiques • Tucker Frey Antiques • Pat & Rich Garthoeffner • Fred Giampietro • Scott Bassoff and Sandy Jacobs • Jason Samuel Fine Art & Antiques • Bob Jessen & Jim Hohnwald • Jewett-Berdan Antiques • Bill Kelly & Courtney Walsh • Kelly Kinzle • Nathan Liverant and Son, LLC • Thomas R. Longacre Antiques • Ian McKelvey Antiques • MG Art & Antiques • Judith & James Milne • Missouri Plain Folk • Newsom & Berdan Antiques • Jeff & Holly Noordsy Art and Antiques • The Norwoods' Spirit of America • Old as Adam • Olde Hope Antiques, Inc. • Hercules Pappachristos • Pewter & Wood Antiques • Ken & Robin Pike • Sharon Platt American Antiques • Frank & Barbara Pollack American Antiques • Pratt's Antiques • Resser-Thorner Antiques • Jeffrey Roelof • John H. Rogers Antiques • Stella Rubin • A. E. Runge Jr. -- Oriental Rugs • Peter Sawyer Antiques • David A. Schorsch • Eileen M. Smiles • Stephen Score, Inc. • John Sideli Antiques & Fine Art • Mary & Joshua Steenburgh • Stephen Douglas Antiques • Steven F. Still Antiques • Paul D. Sullivan Antiques • Thomas M. Thompson • Jonathan Trace • Village Braider, Inc. • Michael Whittemore Antiques & Folk Art • Withington & Co. • Douglas Wyant Antiques, LLC • Gary F. Yeaton Antiques

August 8 - 10, 2019

THURSDAY & FRIDAY: 10AM - 7PM  
SATURDAY: 10AM - 4PM

The DoubleTree by Hilton  
(formerly The Manchester Downtown Hotel)  
Manchester, NH • 603.625.1000



THE 62ND ANNUAL  
New Hampshire Antiques Show

SPECIAL  
SHOW  
SECTION

# Welcome

## To The 62nd New Hampshire Dealers' Show

On behalf of the New Hampshire Antiques Dealers Association I would like to welcome you all to the 62nd Annual New Hampshire Antiques Show. As usual, our exhibitors have been holding back merchandise in order to present "the best of the best" to you, our faithful attendees. We are happy to welcome back old friends who have supported us over the years, and are looking forward to see new faces as well. Our exhibitors are eager and happy to share their knowledge, so don't hesitate to ask questions.

In addition to the shows of Antiques Week in New Hampshire, there are many shops holding special events to welcome all of you back. There are shops located about 15 minutes or so from Manchester in what ever direction you travel. There are New Hampshire Dealer Association Directories



available at the show. Pick one up and go exploring. In addition to our variety of antique shops, New Hampshire has many museums that are worthy of your visit, some are close by in Manchester.

I would also like to congratulate Frank Gaglio and Barn Star Productions on their 25th anniversary of MidWeek in Manchester. Twenty five years ago was my first year as president of the New

Hampshire Antiques Dealers Association. When Barn Star announced it's intentions, I was bombarded with predictions that "the sky was falling." As we all can see, the sky is still where it should be and Antiques Week in New Hampshire has become a major event. Some of the shows of Antiques Week have gone and others have taken their place, but the week continues to be an exciting one. People from all over the country (and beyond) flock to New Hampshire to take part in all the events and to spend some time traveling around our state, admiring what it has to offer.

Enjoy our show, our shops and your visit to New Hampshire.

*Thomas M. Thompson,*  
*President*  
New Hampshire Antiques  
Dealers Association



## DEALERS' DIRECTORY



A.E. Runge Jr Oriental Rugs .....NH-64  
American Sampler .....NH-6  
Axtell Antiques.....NH-65  
Barbara Ardizzone Antiques.....NH-16  
Bill Kelly & Courtney Walsh.....NH-51  
Bob Jessen & Jim Hohnwald.....NH-18  
Brian J. Ferguson.....NH-62  
Cherry Gallery.....NH-48  
Christopher & Bernadette Evans.....NH-41  
David Schorsch-Eileen Smiles.....NH-31  
Dennis & Dad Antiques.....NH-26  
DeWolfe and Wood.....NH-39  
Douglas Wyant Antiques, LLC.....NH-24  
Frank & Barbara Pollack.....NH-15  
Fred Giampietro.....NH-46  
Gary F. Yeaton Antiques.....NH-13  
Hercules Pappachristos.....NH-20  
Hollis Brodrick.....NH-37  
Ian McKelvey Antiques.....NH-47  
Jason Samuel.....NH-32  
Jeff & Holly Noordsy.....NH-29  
Jeffrey Roelof.....NH-50  
Jewett-Berdan Antiques.....NH-34-35  
John Chaski Antiques.....NH-21  
John H. Rogers Antiques.....NH-30  
John Sideli Antiques.....NH-57  
Jonathan Trace.....NH-56  
Judith & James Milne.....NH-54  
Kate A. Alex & Co.....NH-10  
Kelly Kinzle.....NH-19  
Ken & Robin Pike.....NH-42  
M. Finkel & Daughter.....NH-17

Mary & Joshua Steenburgh.....NH-55  
Melissa Alden.....NH-38  
MG Art & Antiques.....NH-36  
Michael Whittemore.....NH-43  
Missouri Plain Folk.....NH-27  
Nancy Fishelson.....NH-49  
Nathan Liverant and Son, LLC.....NH-63  
Newsom & Berdan Antiques.....NH-23  
Old as Adam.....NH-61  
Olde Hope Antiques, Inc.....NH-52  
Pam & Martha Boynton.....NH-25  
Pat & Rich Garthoeffner.....NH-28  
Paul & Linda DeCoste.....NH-14  
Paul D. Sullivan Antiques.....NH-59  
Peter Sawyer Antiques.....NH-3  
Pewter & Wood Antiques.....NH-12  
Pratt's Antiques.....NH-40  
Resser-Thorner Antiques.....NH-45  
Robert T. Foley Antiques.....NH-66  
Samuel W. Forsythe Antiques.....NH-22  
Scott Bassoff and Sandy Jacobs.....NH-9  
Sharon Platt American Antiques.....NH-33  
Stella Rubin.....NH-8  
Stephen Douglas Antiques.....NH-5  
Stephen Score, Inc.....NH-58  
Steven F. Still Antiques.....NH-11  
The Norwoods' Spirit of America.....NH-4  
Thomas M. Thompson.....NH-60  
Thomas R. Longacre Antiques.....NH-44  
Tucker Frey Antiques.....NH-53  
Village Braider, Inc.....NH-7  
Withington & Co.....NH-67



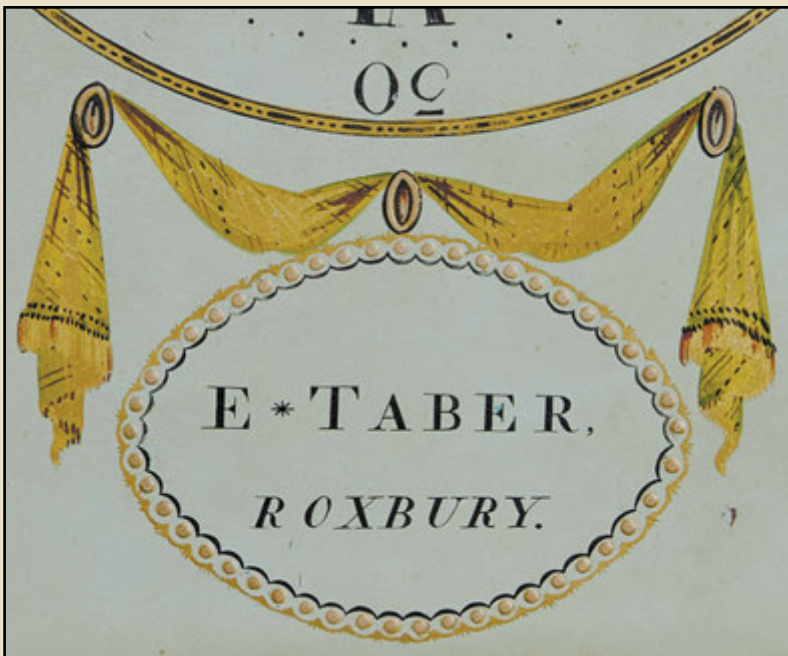
SPECIAL  
SHOW  
SECTIONTHE 62ND ANNUAL  
New Hampshire Antiques Show

# PETER SAWYER ANTIQUES

17 COURT STREET  
EXETER, NH 03833  
603 772 5279

## Shelf Clock, circa 1810

Significant for its state of preservation and superb proportions, this shelf clock was made by Elnathan Taber (1789-1854) considered by Simon Willard to be his best apprentice. It is further enhanced by the choice of exceptional woods throughout and a superb dial with the original owners name. Height including finial 40  $\frac{3}{4}$  inches, base 14  $\frac{1}{2}$  inches wide by 7 inches deep.



*We specialize in fine  
New England antiques  
from the late  
18<sup>th</sup> and early 19<sup>th</sup> century.*

Generally, our shop is open Monday – Friday and visitors are invited to stop by anytime. To insure we are open, a call ahead is encouraged. We are always eager to buy fine New England objects.

Peter Sawyer/Scott Bassett  
Petersawyer@comcast.net  
PeterSawyerAntiques.com







# THE 62ND ANNUAL New Hampshire Antiques Show

SPECIAL  
SHOW  
SECTION



**A.E. RUNGE JR ORIENTAL RUGS**, Yarmouth, Maine — Persian Heriz, 18 feet 3 inches by 11 feet 2 inches, circa 1920s, from a New Hampshire estate, in fine condition.



**ROBERT T. FOLEY ANTIQUES**, Gray, Maine — “Bug Light with Fort Gorges,” oil on board, signed G.M. Hathaway.



**MISSOURI PLAIN FOLK**, Sikeston, Mo. — Late Nineteenth or early Twentieth Century polychrome figural whimsy, New York state, 14½ inches tall.

**IAN McKELVEY ANTIQUES**, South Windham, Conn. — Antique Parcheesi gameboard.



**OLDE HOPE ANTIQUES, INC**, New Hope, Penn. — Exceptional carved and paint-decorated bird, Pennsylvania, circa 1850–80, measuring 21¼ inches tall, 25 inches deep, with a wingspan of 28½ inches.



## THE NORWOODS' SPIRIT OF AMERICA CHOICE AMERICANA OF THE 18<sup>TH</sup> AND 19<sup>TH</sup> CENTURIES

# Folk Art: Fine, Fancy and Fun



Early 19<sup>th</sup> Century poignant and captivating memorial to Sybill Cobb.



Well-rendered 19<sup>th</sup> century American still life, oil on canvas.



Charming diminutive 19<sup>th</sup> century Pennsylvania fraktur, featuring a most delightful and colorful bird.

Portraits Sculpture Theatrics Trade Signs Watercolors

Folk Art Fraktur Hooked Rugs Needlework Painted Smalls

**DOUG AND BEV NORWOOD**

410.252.2012  [spiritofamerica@comcast.net](mailto:spiritofamerica@comcast.net)





SPECIAL  
SHOW  
SECTION

THE 62ND ANNUAL  
New Hampshire Antiques Show

# STEPHEN / DOUGLAS

*Rockingham, Vermont*

802-463-4296

*Walpole, New Hampshire*



Delightful small needlework on silk — Pennsylvania origin, 1st qtr. 19th century, housed in its original folky mahogany veneer frame. Shown almost actual size, 9 ¾" x 12".





# THE 62ND ANNUAL New Hampshire Antiques Show

SPECIAL  
SHOW  
SECTION

## New Exhibitors For 62nd Annual Show

David A. Schorsch and Eileen Smiles are new exhibitors to the New Hampshire Antiques Show.

With combined experience of nearly 70 years in business, David Schorsch and Eileen Smiles are veteran dealers specializing in classic examples of American decorative arts of the Eighteenth and Nineteenth Centuries with an emphasis on folk art.

They maintain a private gallery in the newly restored "Sabbath-day Meeting House" in the historic district of Woodbury, Conn., and are exhibitors at The Winter Show in New York City in January and The Philadelphia Antiques and Art Show in April.

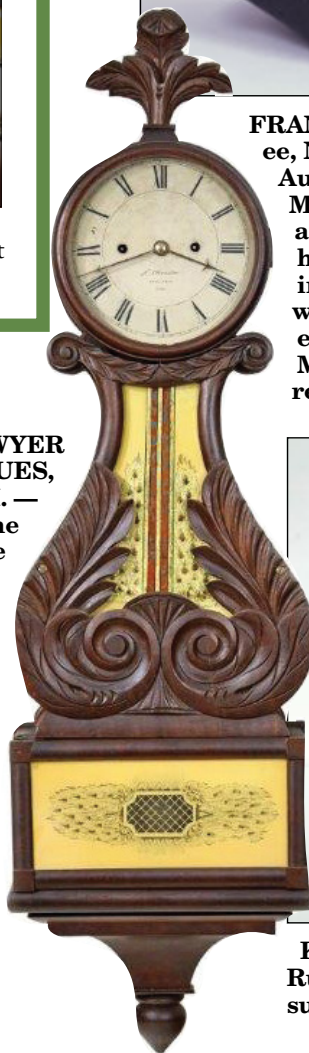


**FRANK & BARBARA POLLACK, Highland Park, Ill. & Sunapee, N.H.** — A large white-wing scoter, American, attributed to Augustus Aaron "Gus Wilson" (1864-1950), South Portland, Maine, circa 1920. Evident in this scoter is Wilson's sleek and streamlined look. He created this bird using many of his signature characteristics: a flat bottom, carved eyes, inleted head and raised carved wings. A powerful form with a great presence. The width is 24½ inches by 9½ inches high by 11 inches deep. Exhibited: The Wendell Gilley Museum, Southwest Harbor, Maine. Ex collection: Margaret Scott Carter.



**JEFF & HOLLY NOORDSY, Cornwall, Vt.** — New Milford, Conn., pewter ink dated 1743.

**PETER SAWYER  
ANTIQUES,  
Exeter, N.H.** —  
A rare time  
and strike  
lyre clock by  
Abiel Chan-  
dler, Con-  
cord, N.H.



**KEN & ROBIN PIKE, Nashua, N.H.** — Circa 1900 New York Ruby Bands advertising with great color and graphics, measuring 15½ inches long by 5½ inches wide by 5¼ inches high.

## AMERICAN SAMPLER

[www.castirononline.com](http://www.castirononline.com)

*Figural Cast Iron: Doorstops, Door Knockers, Bookends, Banks, Paperweights, Country Americana*

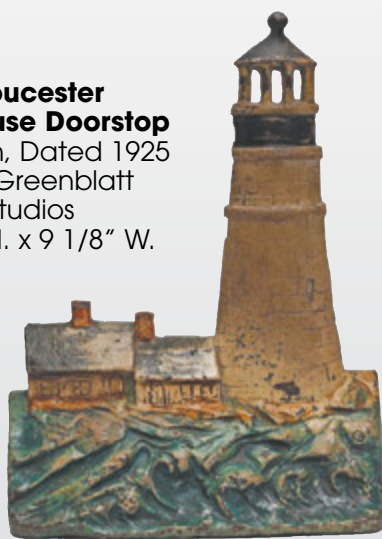
John C. & Nancy Smith  
PO Box 371  
Barnesville, MD. 20838  
301-972-6250

Authors of  
"THE DOORSTOP BOOK"  
\$49.95 PLUS  
\$5.00 shipping

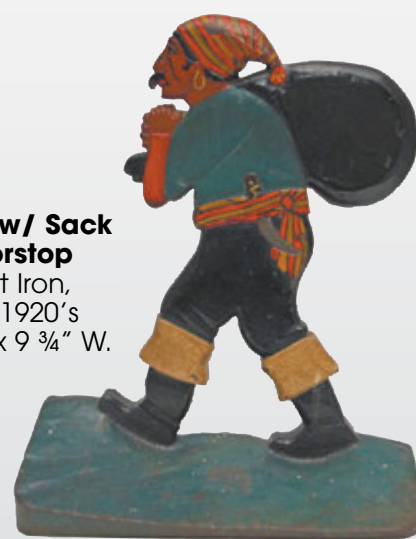
**Bird of Paradise  
Doorstop**  
CA. 1920's,  
Cast Iron  
L.A.C.S. Foundry  
13 3/8" H. x 7" W.



**Gloucester  
Lighthouse Doorstop**  
Cast Iron, Dated 1925  
A.M. Greenblatt  
Studios  
11 ½" H. x 9 1/8" W.



**Pirate w/ Sack  
Doorstop**  
Cast Iron,  
CA. 1920's  
12" H. x 9 ¾" W.



**Squirrel w/ Nut  
Doorstop**  
Cast Iron,  
CA. 1920's  
Bradley & Hubbard  
9 7/8" H. x 11 ½" W.



**Putting Golfer  
Doorstop**  
Cast iron,  
CA. 1930's  
Hubley  
8 ½" H. x 7 ¼" W.



**Wirehaired Fox  
Terrier Doorstop**  
Cast Iron,  
CA. 1930's  
Hubley  
12 ¾" H. x 10 ½" W.







SPECIAL  
SHOW  
SECTION

THE 62ND ANNUAL  
New Hampshire Antiques Show

# Village Braider Inc.

Plymouth, MA • 508-746-9625



Oval wood panel in original paint, New Hampshire, 25" x 17". Originally there were 16 plaques that decorated the staterooms of the early cross-Atlantic sailing vessel called the *American*, later in their history they ended up in the post office Cold Spring Harbor, New York, around 1910.





# THE 62ND ANNUAL New Hampshire Antiques Show

SPECIAL  
SHOW  
SECTION



**AMERICAN SAMPLER,** Barnesville, Md. — Hubley grouping of flower doorstops, assorted colorful flowers, circa 1930s; the largest measures 8¾ inches high.



**CHRISTOPHER AND BERNADETTE EVANS ANTIQUES,** Waynesboro, Va. — Circa 1930 hooked rug with two black horses flanking a flowering bush with an abstract border, 42 by 27½ inches.

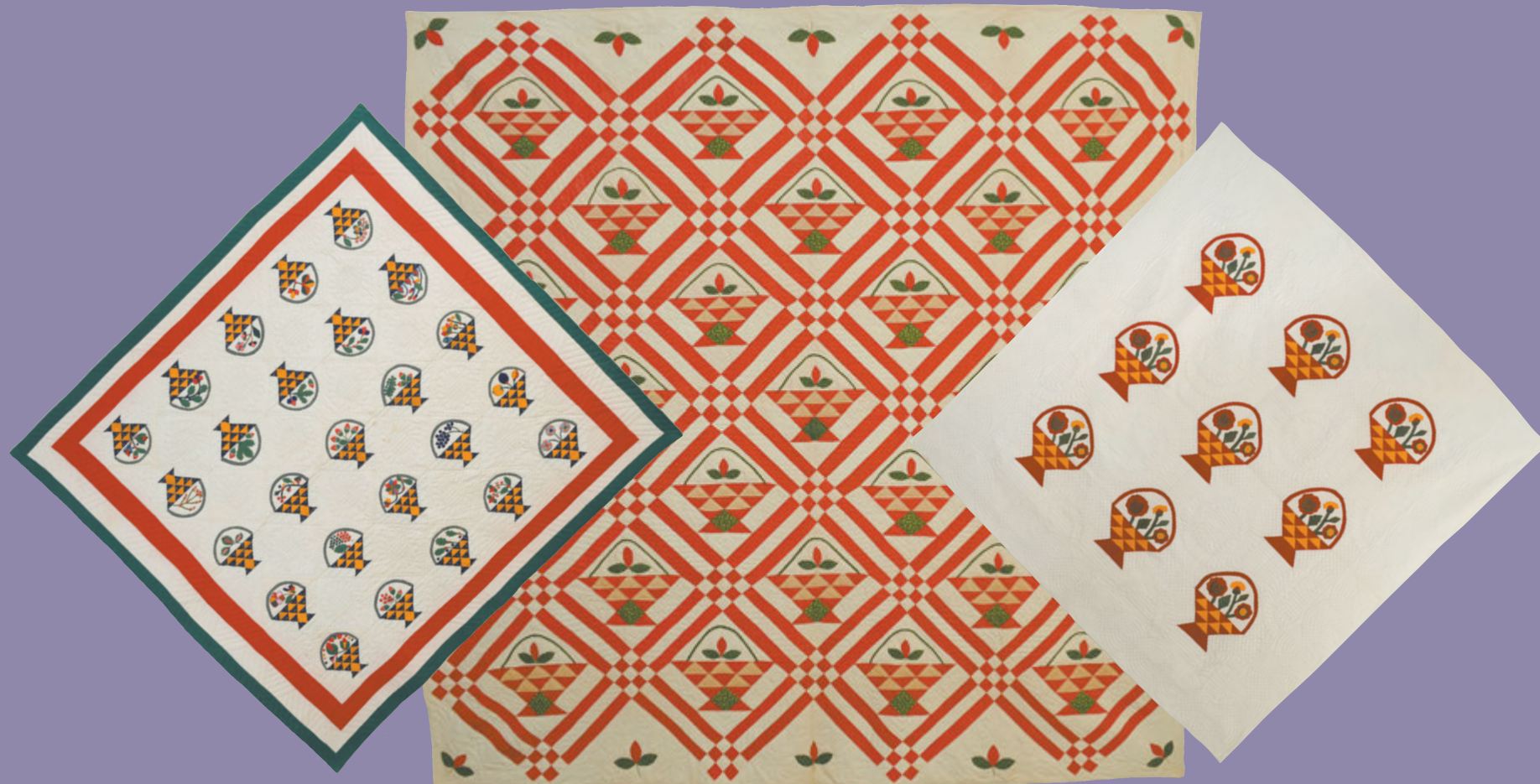


**JEWETT-BERDAN ANTIQUES,** Newcastle, Maine — Watercolor on paper of folky cat with red bow.

**NORWOODS' SPIRIT OF AMERICA,** Timonium, Md. — Exceptionally well-carved and paint-decorated diminutive figure of a man and his prized fiddle.



**STEVEN F. STILL ANTIQUES,** Manheim, Penn. — Splint basket with the original green painted surface. This late Nineteenth Century basket was found in New York State. The diameter is 8½ inches and the height is 5 inches.



*Antique Quilts and  
Fine Design Jewelry*



**Darnestown, MD**  
(outside Washington, DC)  
**301-948-4187**  
**stellarubin@verizon.net**  
**www.stellarubin.com**





SPECIAL  
SHOW  
SECTION

THE 62ND ANNUAL  
New Hampshire Antiques Show

Scott Bassoff • Sandy Jacobs  
ANTIQUES



Finely detailed Philadelphia portrait of boy and his dog.



Victorian 14k gold snake brooch  
with pavé set pearls and turquoise.



Figural southwest Native American rug  
with great folky cows.



Unusual sheet vane of hunter and retrievers.  
30" wide.

Swampscott, MA 01907 | 603.801.5532 mobile  
[www.sandyjacobsantiques.com](http://www.sandyjacobsantiques.com) | [sandyjnh1@gmail.com](mailto:sandyjnh1@gmail.com) | [www.scottbassoffssandyjacobsantiques.com](http://www.scottbassoffssandyjacobsantiques.com)







THE 62ND ANNUAL  
New Hampshire Antiques Show

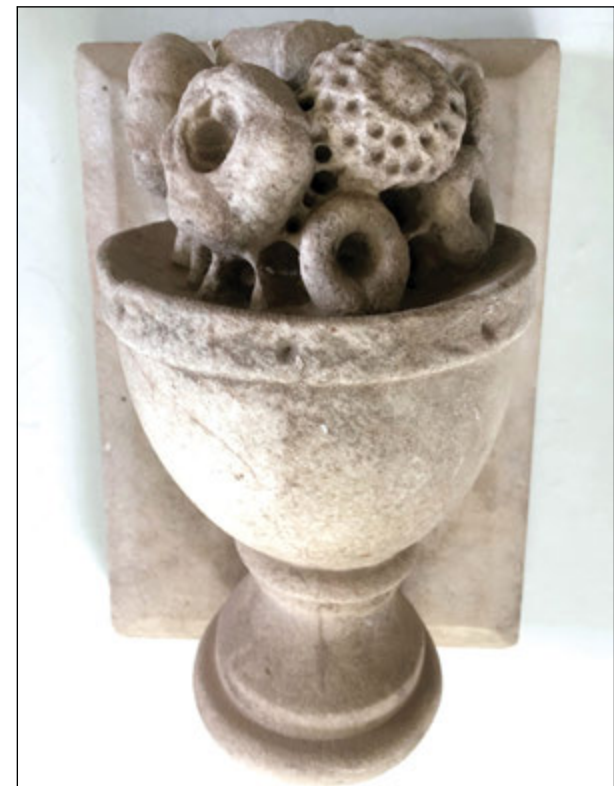
SPECIAL  
SHOW  
SECTION

**OLDE HOPE ANTIQUES, INC,** New Hope, Penn. — Theorem on silk, American, circa 1820, 18¾ by 23¼ inches; in a Nineteenth Century frame with applied acanthus leaves, 22¼ by 26¾ inches.

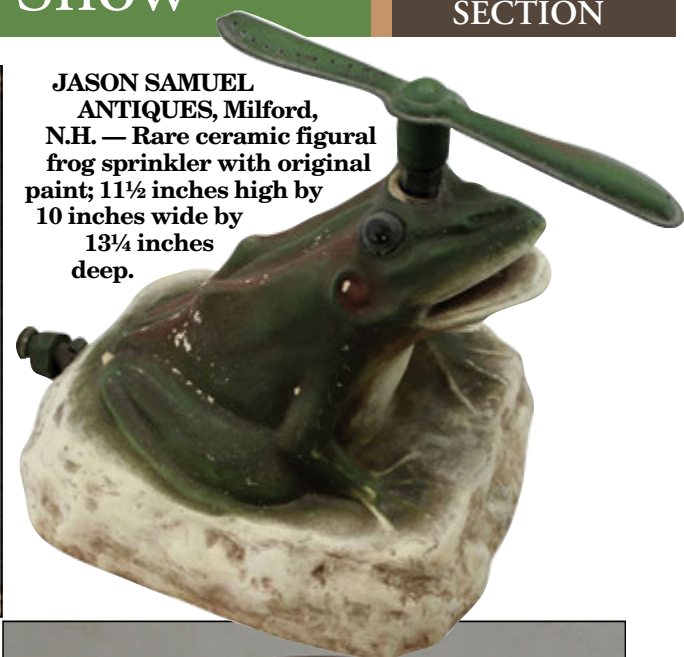


**IAN McKELVEY ANTIQUES,** South Windham, Conn. — Eighteenth Century New England pipe box.

**MISSOURI PLAIN FOLK,** Sikeston, Mo. — Three-dimensional marble architectural element, 8 by 6½ inches by 10½ inches tall, in excellent original condition with no chips or cracks.



**JASON SAMUEL ANTIQUES,** Milford, N.H. — Rare ceramic figural frog sprinkler with original paint; 11½ inches high by 10 inches wide by 13¼ inches deep.



**JEFF & HOLLY NOORDSY,** Cornwall, Vt. — The “best” Eighteenth/Nineteenth and Twentieth Century make-do lighting device.

★ KATE A. ALEX ★



Early, impressive, carved wooden folk art greyhound in stride. Org. paint with a metal collar and in excellent condition. From a private NYC folk art collection. 5 ft. long.



Two bronze deco architectural elements in a great old verdigris with nudes entwined with dolphins and octopus. Likely ornaments from the exterior of a coastal structure. 45" L, 15" T.

Warner, NH • 603-491-1499





SPECIAL  
SHOW  
SECTION

THE 62ND ANNUAL  
New Hampshire Antiques Show

MEOWWW!!!



Steven F. Still

*Antiques*

1717 South Colebrook Road • Manheim, PA 17545  
Phone: (717) 459-3595 • Cell: (717) 682-0410

[www.stevenfstillantiques.com](http://www.stevenfstillantiques.com)





# THE 62ND ANNUAL New Hampshire Antiques Show

SPECIAL  
SHOW  
SECTION



**AMERICAN SAMPLER**, Barnesville, Md. — Pigeon decoy, cast aluminum rocking head, circa 1915, Trulock Harriss (Tur-iss), 6 inches tall by 13¼ inches long by 4¾ inches wide.

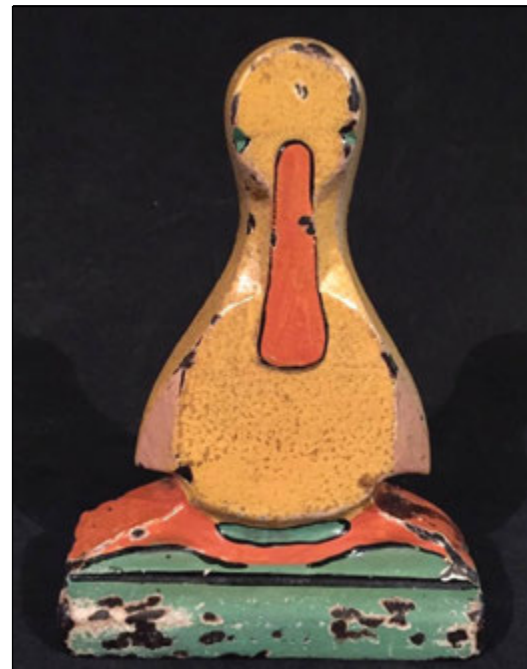


**VILLAGE BRAIDER**, Plymouth, Mass. — Double-sided game board, original paint, Long Island origin, 24¼ by 25¼ inches.



**M. FINKEL & DAUGHTER**, Philadelphia — Rare pair of Uruguayan samplers by sisters Clementina Batlle y Grau, 1822, and Gertrudis Batlle y Grau, 1823, from a prominent political family, Montevideo. Gertrudis's sampler size is 17½ by 18 inches. Clementina's sampler size is 17½ inches square.

**JEWETT-BERDAN ANTIQUES**, Newcastle, Maine — Silhouette of a well-dressed man, circa 1830, original frame.



**CHRISTOPHER AND BERNADETTE EVANS ANTIQUES**, Waynesboro, Va. — Hubley cast iron duck doorstop, circa 1930, 5¼ inches tall.



## PEWTER & WOOD ANTIQUES

Barbara Boardman Johnson  
Enfield, NH

**(602) 677-5686**

Booth #7

[www.pewterandwoodantiques.com](http://www.pewterandwoodantiques.com)

[info@pewterandwoodantiques.com](mailto:info@pewterandwoodantiques.com)

Game board, 19th c., in bittersweet, black, cream and dark blue 17 1/2" L x 11 5/8" W;  
two N.E. blue pantry boxes 6 1/2" diam,  
7 1/2" diam.







SPECIAL  
SHOW  
SECTION

THE 62ND ANNUAL  
**New Hampshire Antiques Show**



**GARY F. YEATON ANTIQUES**  
18th & Early 19th Century American Furniture & Accessories

**NEW ENGLAND  
CHIPPENDALE  
HIGHCHEST**  
Coastal Massachusetts  
or New Hampshire  
C. 1750-1760

Few highchests survive in original condition, but this fine example defied the odds, retaining its original well-worn surface, original brasses and original wooden drops.

The chest is also beautifully proportioned, having graceful legs terminating in bold, claw and ball feet and a generous cornice, which expertly conceals a cornice drawer.

A nearly identical example is pictured in Sack's *American Antiques* – Volume 1, plate no. 208.

Height – 5 ft. 11 in.  
Width – 37 ¾ in. (lower case)  
Depth – 19 in. (lower case)



We carry a select inventory of investment quality New England antiques with a special interest in New Hampshire furniture.

*Offering Professional Conservation and Appraisal Services*

VISIT US AT THE SHOW! – BOOTH #61

Gallery located at 280 South St. Concord, NH 03301

By appointment – (603) 228-4840 | [gfyeatonantiques@comcast.net](mailto:gfyeatonantiques@comcast.net) | [www.GaryYeatonAntiques.com](http://www.GaryYeatonAntiques.com)





THE 62ND ANNUAL  
New Hampshire Antiques Show

SPECIAL  
SHOW  
SECTION



A.E. RUNGE JR ORIENTAL RUGS, Yarmouth, Maine — Antique Kazak, green field, 5 feet 6 inches by 3 feet 4 inches, super condition.

VILLAGE BRAIDER, Plymouth, Mass. — “Cats” sign, applied carved letters, original paint, Maine origin, 5½ by 17½ inches.



PETER SAWYER ANTIQUES, Exeter, N.H. — An exceptional Salem candlestand.

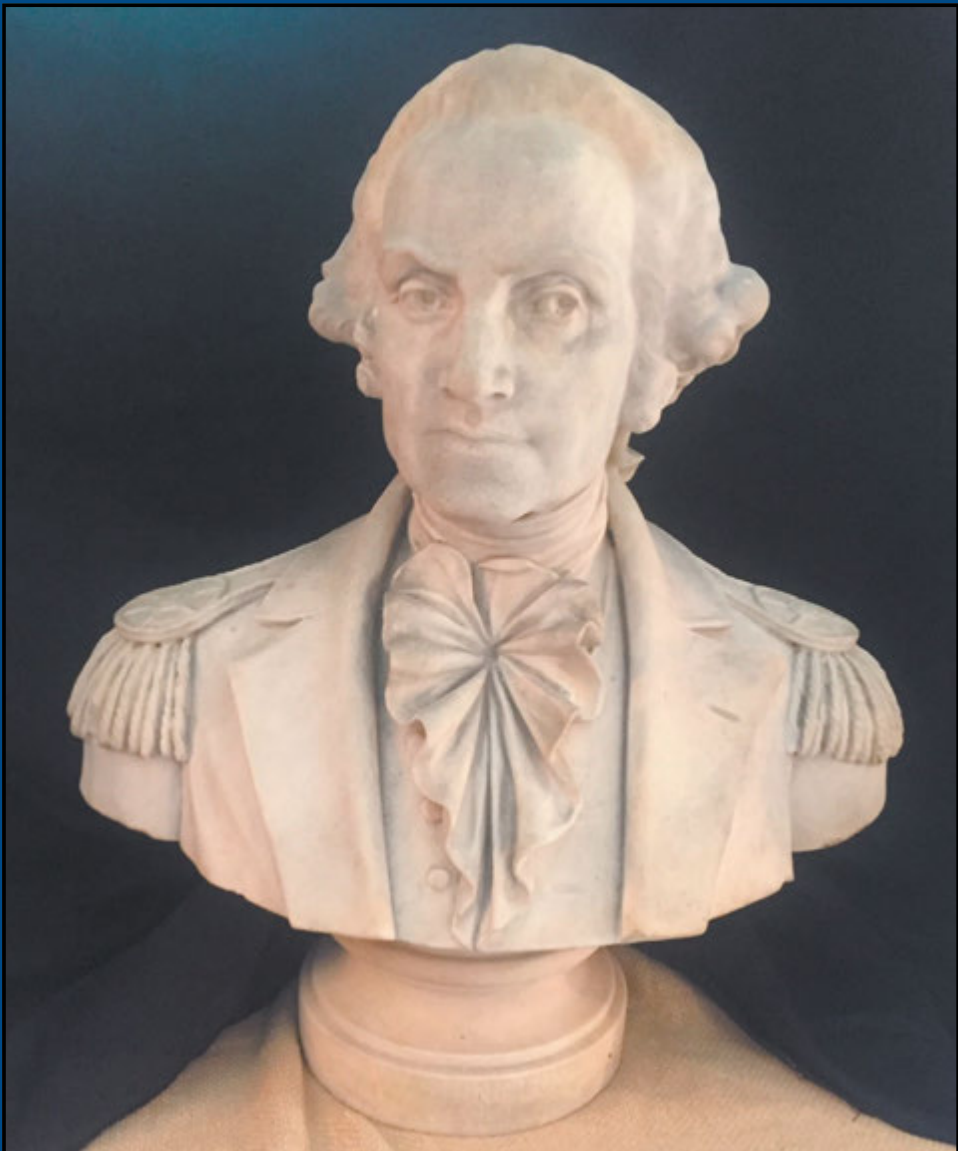


STEVEN F. STILL ANTIQUES, Manheim, Penn. — Surveying instrument made by Jacob Blattner (1812–1888) from St Louis, Mo.



MISSOURI PLAIN FOLK, Sikeston, Mo. — Painted make-do game board on a Nineteenth Century Pennsylvania plank bottom chair, 15 by 15 inches overall.

Paul J. DeCoste  
978-363-1420



Marble bust of George, 27”H x 27”W





SPECIAL  
SHOW  
SECTION

# THE 62ND ANNUAL New Hampshire Antiques Show

## Frank & Barbara Pollack *American Antiques & Art*

We have available and wish to purchase American Primitive Paintings, Furniture, Textiles,  
Folk Art, Bakelite Jewelry and Accessories of the 18th, 19th and 20th Centuries

Tel: 847.433.2213 Cell: 847.922.5141 [barbarapollack@comcast.net](mailto:barbarapollack@comcast.net)

Until late August we can also be reached in Sunapee, New Hampshire at 603.763.2403



### A Dynamic Raised-Work Table Cover of Exceptional Intricacy and Sophistication

American, found in Maine; third quarter of the 19th Century.

A wool on wool embroidered and appliqued raised and stuffed work table cover depicting bold and colorful baskets and bouquets of flowers. The artist has created a "painting on fabric" with imaginative techniques, designs, and choice of colors.  
54 inches square.



Box 344, Sunapee  
New Hampshire 03782  
603.763.2403



Exhibiting at  
Aug. 8-10, 2019  
Manchester, NH





# THE 62ND ANNUAL New Hampshire Antiques Show

SPECIAL  
SHOW  
SECTION



**VILLAGE BRAIDER, Plymouth, Mass.** — Carved and painted wood panel of a fish by Ralph Eno, 19½ inches tall by 23½ inches wide, circa 1950s.



**JEFF & HOLLY NOORDSY, Cornwall, Vt.** — Superb tinware document box with a crystalline surface.



**PRATT'S ANTIQUES, Victor, N.Y.** — Chalkware phrenology head labeled Fowler & Wells.



**FRANK & BARBARA POLLACK, Highland Park, Ill. & Sunapee, N.H.** — A monumental carving of an urn filled with a bouquet of flowers and fruit, American, New England, white pine, 24 inches tall by 17 inches wide, circa 1870. This carving would have been used as the mold to create architectural garden ornament. What was created as a functional form, today takes its place on a pedestal as a bold piece of American folk art.



**ROBERT T. FOLEY ANTIQUES, Gray, Maine** — Folky diorama depicting American flag.

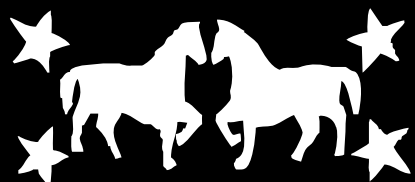


## 19th Century Table Cover

Circa - Mid 19th century,  
most likely New York State.

Condition - Very good - there have been  
a few repairs on the background fabric,  
they are not noticeable unless you have  
them pointed out.

Meas - approximately 50" square



**BARBARA ARDIZZONE**  
SALISBURY, CONNECTICUT 06068  
(860) 435-3057 • [barbara.ardizzone@gmail.com](mailto:barbara.ardizzone@gmail.com)







SPECIAL  
SHOW  
SECTION

# THE 62ND ANNUAL New Hampshire Antiques Show

AMERICA'S LEADING ANTIQUE SAMPLER AND NEEDLEWORK DEALER



est. 1947

# M. Finkel & Daughter.

AMERICA'S LEADING ANTIQUE SAMPLER AND NEEDLEWORK DEALER

936 Pine Street • Philadelphia, PA 19107 • tel: 215-627-7797 • fax: 215-627-8199

www.samplings.com • mailbox@samplings.com





NH-18 — Antiques and The Arts Weekly — August 2, 2019

# THE 62ND ANNUAL New Hampshire Antiques Show

SPECIAL  
SHOW  
SECTION



**STEPHEN-DOUGLAS  
ANTIQUES, Walpole,  
N.H. — Exuberant  
Sheraton one-drawer  
nightstand in dry old  
surface, circa 1825-35,  
New England origin.**



**CHRISTOPHER AND  
BERNADETTE  
EVANS ANTIQUES,  
Waynesboro, Va. —  
Small manganese  
decorated, lead-  
glazed redware jar  
from the first quarter  
of the Nineteenth  
Century with a Con-  
necticut origin, 6 1/4  
inches tall.**



**JOHN H. ROGERS ANTIQUES, Elkins, N.H. —  
Large slip decorated charger.**



**JEWETT-BERDAN ANTIQUES, Newcas-  
tle, Maine — Carved and polychrome dec-  
orated wood bank, circa 1900.**



**RESSER-THORNER ANTIQUES, Manchester,  
N.H. — Rufus Porter plumb and level indica-  
tor, 9 1/2 by 9 1/2 inches.**



**MISSOURI PLAIN FOLK, Sikeston, Mo. — Nineteenth  
Century trencher in vibrant original chrome yellow  
paint, excellent as found condition, 20 by 12 inches  
overall.**

## Bob Jessen & Jim Hohnwald

Fitzwilliam, NH ☒ 603-585-9188 ☒ Booth 27



Wonderful shoe-foot  
Hutch Table in old red paint  
57.5" long x 40" wide x 28" high  
New England,  
Circa late 1700's - Early 1800's





SPECIAL  
SHOW  
SECTION

THE 62ND ANNUAL  
**New Hampshire Antiques Show**

*Pennsylvania Paint Decorated Corner Cupboard*



Original paint decoration with unique yellow and white background and blue stamped decorations and a salmon border. Maker inscription with the date 1832 on the underside of the right drawer. Height: 96"



**Kelly Kinzle** [www.kellykinzleantiques.com](http://www.kellykinzleantiques.com) | [kellykinzle@comcast.net](mailto:kellykinzle@comcast.net) | 717-495-3395





# THE 62ND ANNUAL New Hampshire Antiques Show

SPECIAL  
SHOW  
SECTION



IAN McKELVEY  
ANTIQUES, South  
Windham, Conn. —  
Antique barber pole.



DAVID A. SCHORSCH/EILEEN M. SMILES,  
Woodbury, Conn. — Chamber stick, an uncommon form in American painted tin, in remarkably pristine condition, Pennsylvania, circa 1840, diameter 6 1/4 inches.



A.E. RUNGE JR ORIENTAL  
RUGS, Yarmouth, Maine —  
Rare square Persian Heriz, 8  
feet 10 inches by 8 feet 6  
inches, circa 1920s, in fine  
condition.



DeWOLFE & WOOD,  
Alfred, Maine — Improved  
Order of Red Men painted  
wooden hatchet dated  
1921, 18 inches long.

FRANK & BARBARA  
POLLACK, Highland Park,  
Ill. & Sunapee, N.H. — A  
zinc horse trade sign, iron  
decorative bracket and  
chains, American, found  
in a private collection in  
New York State near Albany,  
circa 1920-30. This  
double-sided sign, most  
likely hung outside a  
horse farm, has great  
presence and is an expression  
of American folk art.  
The total height is 47 inches  
by 39 inches; horse  
height is 24 inches by 29  
inches by 2 inches deep.  
The original iron bracket  
height is 18 1/2 inches by 35  
inches wide by 1 1/2 inches  
deep.



HERCULES J. PAPPACHRISTOS  
ART & ANTIQUES

Derry, New Hampshire Tel: 603.548.5959

**Martin Lewis**  
(American, 1881-1962)  
*Nocturnal landscape  
with old stagecoach,*  
Oil on panel,  
signed lower left,  
15" x 15 1/2"

Exhibiting at the  
NHADA show  
August 8-10





SPECIAL  
SHOW  
SECTION

THE 62ND ANNUAL  
New Hampshire Antiques Show

# *John Chaski, Inc.*

American Material Culture



All God's creatures, great and small  
How much cash can we get for them all

11 North Main Street  
Camden, DE 19934

302-448-6492

[john@johnchaski.com](mailto:john@johnchaski.com)

[www.johnchaski.com](http://www.johnchaski.com)







THE 62ND ANNUAL  
New Hampshire Antiques Show

SPECIAL  
SHOW  
SECTION

SAMUEL W. FORSYTHE  
ANTIQUES



Very fine New England  
painted candlestand,  
circa 1790

614-261-7489  
Columbus, Ohio



KEN & ROBIN PIKE, Nashua, N.H. — Japanese carved ivory banana, 5 inches long, circa 1868-1912.



ROBERT T. FOLEY ANTIQUES, Gray, Maine — “Portland Head Light,” oil on board, by G.M. Hathaway.



JOHN CHASKI, INC, Camden, Del. — Carvings by W.E. Miller, North American, circa 1930, approximately 6¾ inches tall.



STEPHEN-DOUGLAS ANTIQUES, Walpole, N.H. — Crisp, clean American watercolor of a gentleman by Joseph Davis, in original frame, New Hampshire.



JEWETT-BERDAN ANTIQUES, Newcastle, Maine — Outstanding “Firemens Dance Saturday Night” sign, late Nineteenth Century.





SPECIAL  
SHOW  
SECTION

THE 62ND ANNUAL  
**New Hampshire Antiques Show**



**Early Folk Hooked Rug of Dog and Puppy with Vine Border. Featured in the Book:  
Hooked Rug Treasury By Jessie A. Turbayne. Mid 19th Century. 37" Wide 25" High**

**Carved & Decorated Chicken By  
NJ Carver Stephen Morey  
Circa 1960s 16" X 16" on Stand**



**Lot of Early Painted Smalls**



**NEWSOM & BERDAN  
ANTIQUES & FOLK ART**

[newsomberdan@aol.com](mailto:newsomberdan@aol.com)

717-792-6744 Cell 860-558-3282

Thomasville, Pennsylvania

[www.newsomberdan.com](http://www.newsomberdan.com)







# THE 62ND ANNUAL New Hampshire Antiques Show

SPECIAL  
SHOW  
SECTION



**HOLLIS E. BRODRICK, Portsmouth, N.H.** — Fine Eighteenth Century flintlock tinder lighter.



**OLDE HOPE ANTIQUES, INC, New Hope, Penn.** — An Amish lift-top candle box from Lancaster County, Pennsylvania, circa 1860, 7¾ inches high, 12½ inches wide and 5-3/8 inches deep.

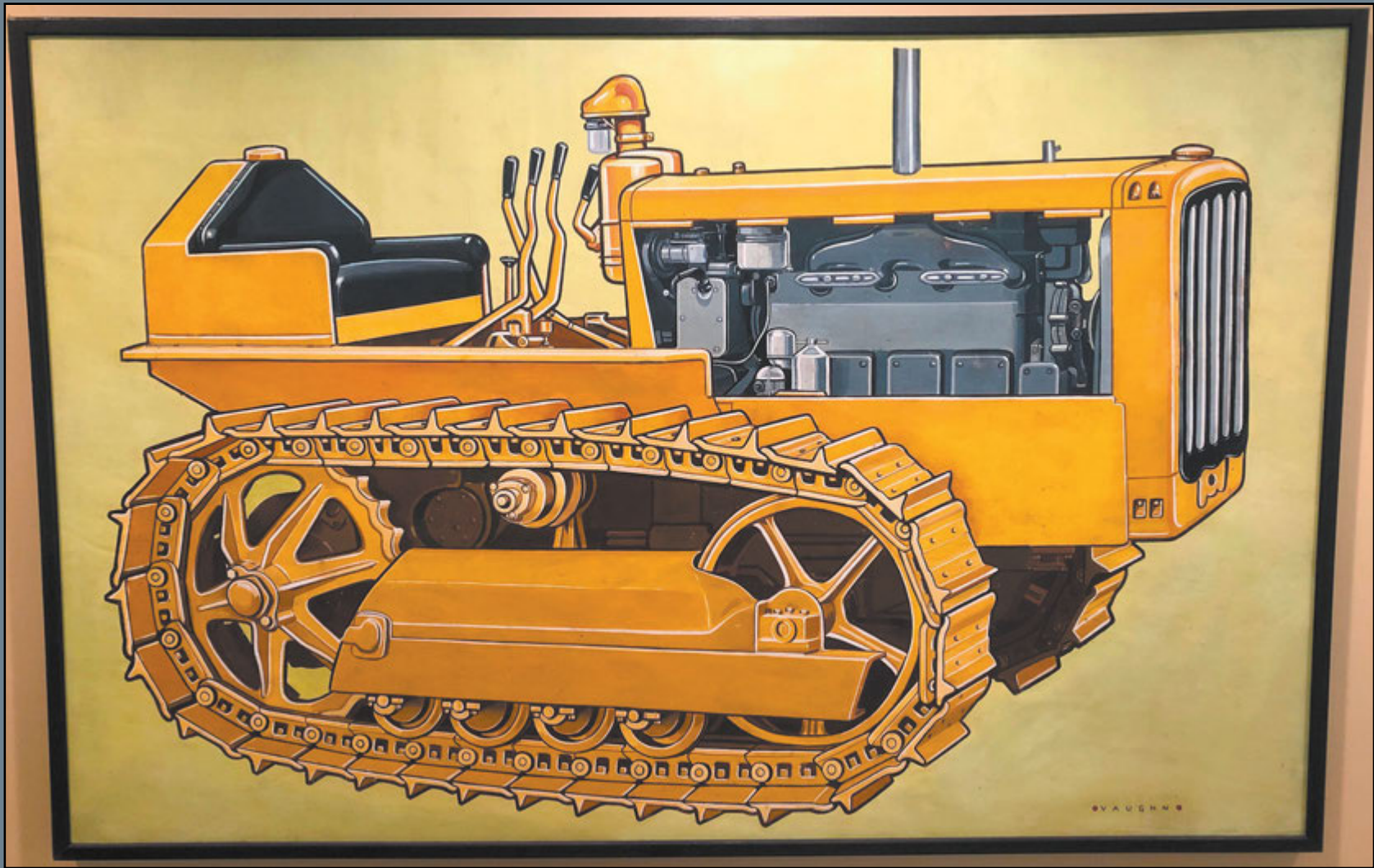


**DENNIS & DAD ANTIQUES, Fitzwilliam, N.H.** — Polychrome decorated Staffordshire pearlware ram figure, late Eighteenth Century, measuring 6½ inches wide by 5 inches high.



**M. FINKEL & DAUGHTER, Philadelphia** — Presentation sampler by Mary Belsterling, circa 1817, Philadelphia. Sampler size is 16¾ by 15½ inches.

**SAMUEL W. FORSYTHE, Columbus, Ohio** — Watercolor by Jacob Maentel dated March 1813.



**Douglas R Wyant**  
ANTIQUES

920 E State Street  
Cassopolis, MI 49031  
269-214-6354 Cell  
tywyant@yahoo.com





SPECIAL  
SHOW  
SECTION

# THE 62ND ANNUAL New Hampshire Antiques Show



Santa Riding a Polar Bear  
on Cardboard Candy Box  
Unmarked but Most Likely German,  
"Merry Christmas"  
Santa & Bear: h: 8"; Box: 6" x 4" x 2.5"



Silhouette by the Puffy Sleeve Artist  
Rare Color, Teal Dress, Origiana; Brass Frame



Paint Decorated Tall-Clock  
Silas Hoadley Movement  
New England, probably NH  
Circa 1820



Velvet Apple, Great Color & Condition d: 4"; h: 3"  
Velvet Pear, Great Color & Condition h: 3"; d: 2"



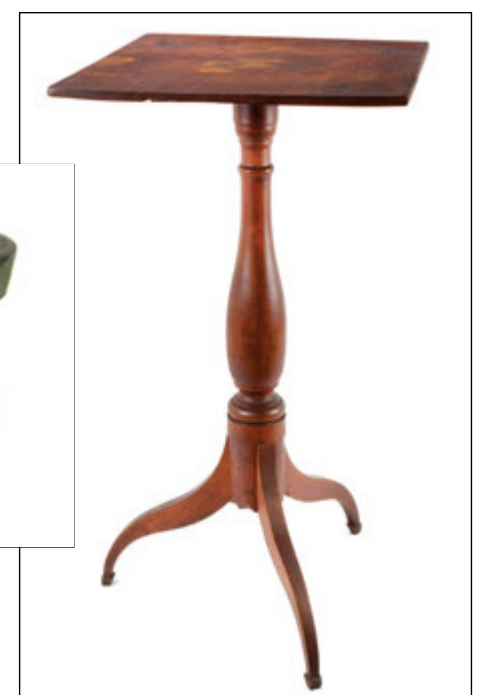
Extremely Rare Tea Cozy,  
Grenfell Tea Cozy, Quilted Insert,  
Grenfell Label (only one I've Seen)  
h:8.5" x w:11"



Apothecary, Paint Decorated, Step-Back,  
Open-Top, 4 Shelves, and 30 Drawers  
New Hampshire, Circa 1834-1840



Miniature Bowl with Original Windsor Green Paint  
d: 3.75"; h: 1.5"; age crack: 1.5"



Candlestand in Original Red Wash,  
Buck, Spade Feet  
top: 15" x 14.5"; h: 28.5"

## PAM & MARTHA BOYNTON

82 Pleasant St., Groton, Massachusetts 01450

978-835-5920/978-448-5031





# THE 62ND ANNUAL New Hampshire Antiques Show

SPECIAL  
SHOW  
SECTION



**STEVEN F. STILL ANTIQUES**, Manheim, Penn. — Squirrel cage, with the original red and yellow paint decoration, found in Belleville, Penn. The squirrel cage is in excellent, original condition and was made in the second half of the Nineteenth Century. It measures 27 inches wide by 10½ inches deep by 14 inches high.



**PEWTER & WOOD ANTIQUES**, Enfield, N.H. — Yellow folk art bird 5 inches high by 4¾ inches long, bird on twig perch: 6¾ inches high plus stand.



**JEFF & HOLLY NOORDSY**, Cornwall, Vt. — Small watercolor or theorem housed in a fabulous period frame.



**IAN McKELVEY ANTIQUES**, South Windham, Conn. — Circa 1830s silhouette of a young girl holding her doll.



**PETER SAWYER ANTIQUES**, Exeter, N.H. — A very rare early Nineteenth Century shelf clock made by Benjamin Swan of Augusta, Maine.



Captial at Harrisburg, Pa covered soup tureen, S. Tams & Co. Importers 12 1/4" high x 14" wide



Blue Pearlware coffee pot with house and tree decoration 11 1/4" high ca. 1820

## Dennis & Dad ANTIQUES

Dennis and Ann  
Berard

33 NH Route 119E,  
Fitzwilliam, NH 03447  
603-585-9479

[antiques@dennisanddadantiques.com](mailto:antiques@dennisanddadantiques.com)  
[www.dennisanddadantiques.com](http://www.dennisanddadantiques.com)



Polychrome Decorated Pearlware Pitcher with Peafowl decoration 10 1/4" high ca. 1820



Late 18th Century Pierced Creamware covered fruit bowl with applied twisted handles and sprigged floral terminals, 8 3/4" high x 10" wide





SPECIAL  
SHOW  
SECTION

THE 62ND ANNUAL  
New Hampshire Antiques Show

THINK

SMALLS



6 1/4"



7 1/2"



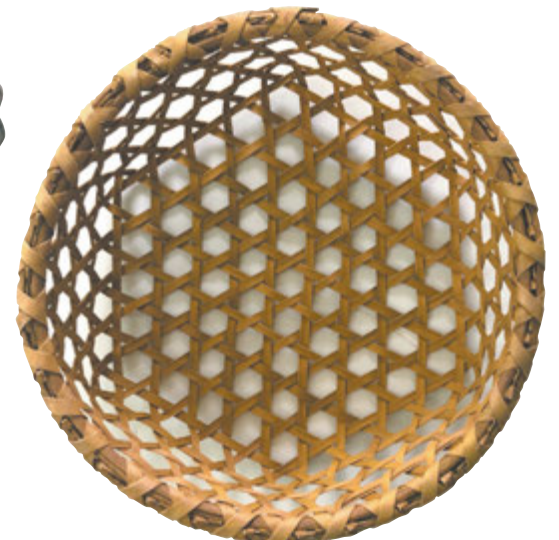
4 1/4"



9 1/4"



5 1/2"



8 1/2"

Booth 50



MISSOURI PLAIN FOLK.com

573-620-5500







# THE 62ND ANNUAL New Hampshire Antiques Show

SPECIAL  
SHOW  
SECTION



**NEWSOM & BERDAN ANTIQUES & FOLK ART**, Thomasville, Penn. — Carved and decorated bird on a ring.



**CHRISTOPHER AND BERNADETTE EVANS ANTIQUES**, Waynesboro, Va. — Half-gallon stoneware pitcher with fine cobalt decoration, from Virginia, circa 1830, 8 1/4 inches tall.



**MISSOURI PLAIN FOLK**, Sikeston, Mo. — Homemade wooden gallery target featuring an iron bull's-eye and carved bird, found in the Berkshires of Massachusetts. The single drawer is signed and dated 1927. It measures 21 by 9 inches by 32 inches tall overall.



**RESSER-THORNER ANTIQUES**, Manchester, N.H. — Early American decorated baleen covered box measuring 8 1/4 by 5 3/4 by 3 inches.

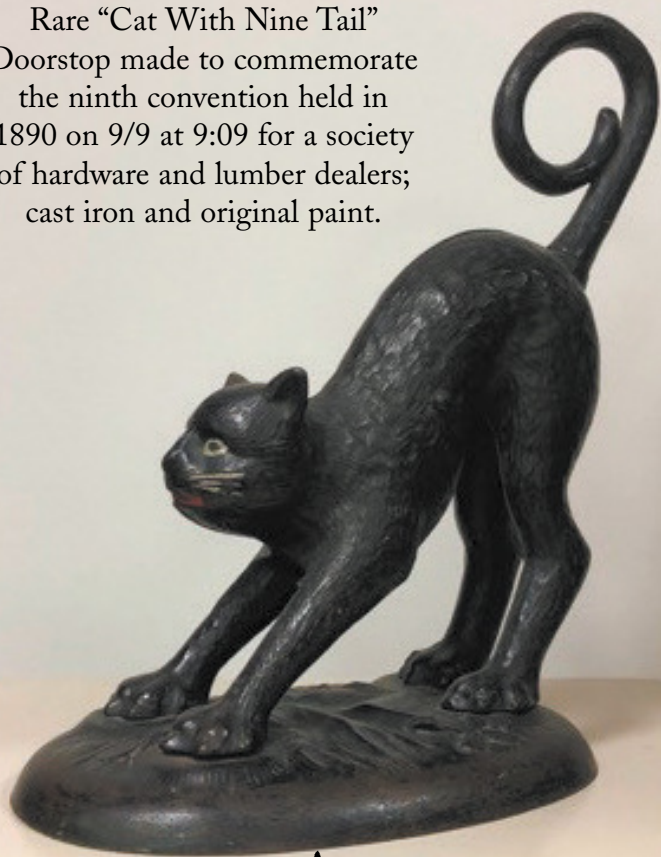


**JOHN CHASKI, INC.**, Camden, Del. — Paint-decorated child's chair, Pennsylvania, circa 1860, 15 inches tall.



**HOLLIS E. BRODRICK**, Portsmouth, N.H. — One of a wonderful early pair of fish-shaped jamb hooks, circa 1790-1810.

Rare "Cat With Nine Tail"  
Doorstop made to commemorate  
the ninth convention held in  
1890 on 9/9 at 9:09 for a society  
of hardware and lumber dealers;  
cast iron and original paint.



42" Wood Carved And Original Painted  
Double Sided Butcher/Meats Trade Sign



Miniature Blanket Chest - 14" x 8" - Original Paint Decorated Surface



**GARTHOEFFNER GALLERY**

*Antiques*

Pat and Rich Garthoeffner  
601 Willow Green, Lititz, Pa. 17543  
717-471-4694 or 717-581-0935







SPECIAL  
SHOW  
SECTION

THE 62ND ANNUAL  
New Hampshire Antiques Show

# This little piggy is coming to Manchester...

Just one of our many fresh finds we hope will blow you away!



Highly unusual 19th century Midwestern redware railroad pig flask

## Jeff and Holly Noordsy

18 Route 74, Cornwall, VT

[www.noordsyantiques.com](http://www.noordsyantiques.com) • [jeffnhol@gmail.com](mailto:jeffnhol@gmail.com) • 802-462-2901

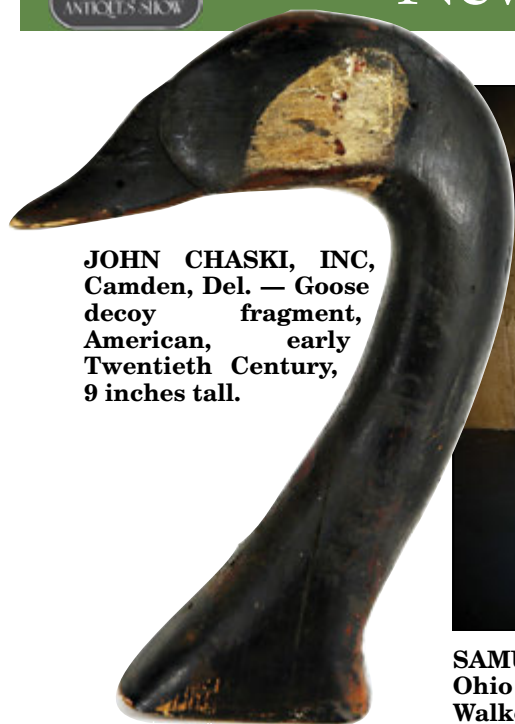






# THE 62ND ANNUAL New Hampshire Antiques Show

SPECIAL  
SHOW  
SECTION



**JOHN CHASKI, INC,**  
Camden, Del. — Goose  
decoy fragment,  
American, early  
Twentieth Century,  
9 inches tall.



**SAMUEL W. FORSYTHE,** Columbus,  
Ohio — Painted candle mold signed J.  
Walker, Livonia, N.Y.



**ROBERT T. FOLEY ANTIQUES,** Gray, Maine — Relief carv-  
ing of vessel Abner Coburn, signed L.H. Thomas.

**FRANK & BARBARA POLLACK,** Highland Park, Ill. & Sunapee, N.H. — A  
large handmade cloth doll, 30 inches tall, American, New England, third  
quarter of the Nineteenth Century. Her costume and construction are  
all original and faintly seen are her drawn-on facial features. Her peri-  
od straw hat was a later addition. Provenance: Hues family, Mammoth  
Road, Manchester, N.H.



**JASON SAMUEL ANTIQUES,**  
Milford, N.H. — Judkins & Sen-  
ter circa 1810 Federal period  
sideboard, Portsmouth, N.H.; 41  
inches high by 72 inches wide  
by 23½ inches deep.



**JEWETT-BERDAN ANTIQUES,** Newcastle, Maine —  
Charming hooked rug of smiling dog and smiling cat,  
circa 1900.



**John H. Rogers**  
ANTIQUES, LLC

603-454-4646 • [jhwithrow@yahoo.com](mailto:jhwithrow@yahoo.com)  
[www.johnhrogersantiques.com](http://www.johnhrogersantiques.com)







SPECIAL  
SHOW  
SECTION

THE 62ND ANNUAL  
New Hampshire Antiques Show

*A Newly Discovered Portrait  
by George Gassner (1811-1861)*

*Child Holding a Peach*

New England, circa 1845

Oil on canvas, 30 x 25 inches

We Are Proud To Be Exhibiting at  
The 62nd Annual NHADA Show,  
August 8 - 10



DAVID A. SCHORSCH ~ EILEEN M. SMILES  
*American Antiques*

ANTIQUARIAN EQUITIES, INC.

358 MAIN STREET SOUTH, WOODBURY, CONNECTICUT 06798

TELEPHONE: 203-263-3131 TELEFAX: 203-263-2622

EMAIL: CONTACT@SCHORSCH-SMILES.COM WWW.SCHORSCH-SMILES.COM





# THE 62ND ANNUAL New Hampshire Antiques Show

SPECIAL  
SHOW  
SECTION



**BILL KELLY & COURTNEY WALSH**, Limington, Maine — New Hampshire maple highboy attributed to John Kimball, Concord N.H., dated 1774 in paint.

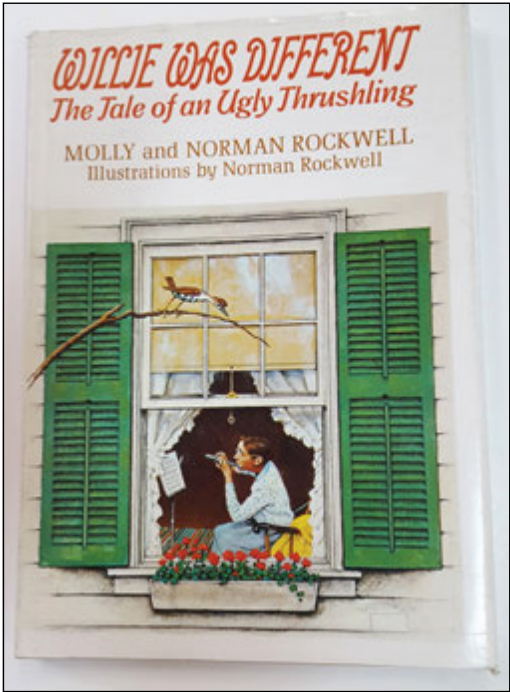
**DeWOLFE & WOOD**, Alfred, Maine — First edition of *Willie Was Different* by Molly and Norman Rockwell, signed by both authors.



**NORWOODS' SPIRIT OF AMERICA**, Timonium, Md. — Well-detailed Nineteenth Century watercolor on paper portrait of a well-attired and most intriguing couple.



**JOHN H. ROGERS ANTIQUES**, Elkins, N.H. — Early Pennsylvania butter print.



**GARTHOEFFNER GALLERY**, Lititz, Penn. — Small selection of Nantucket baskets pre-1940.

## JASON SAMUEL

■ FINE ART AND ANTIQUES ■



*Paul Starrett Sample (1896-1974), panoramic winter landscape, Verney Farm, Bennington, NH, 35" h x 70" w*

THE GALLERY AT NEW HAMPSHIRE ANTIQUE CO-OP  
323 ELM STREET, MILFORD NH  
603.673.8499 • NHANTIQUECOOP.COM • OPEN DAILY 10-5



VISIT US  
BOOTH #53

20,000 sq. ft. Antique Shop & Fine Art Gallery • 30 minutes west of Manchester NH



#nhantiquecoop  
@nhantiquecoop





SPECIAL  
SHOW  
SECTION

THE 62ND ANNUAL  
New Hampshire Antiques Show

Sharon Platt

American  
Antiques

Period Decorative Arts for the Early American Home



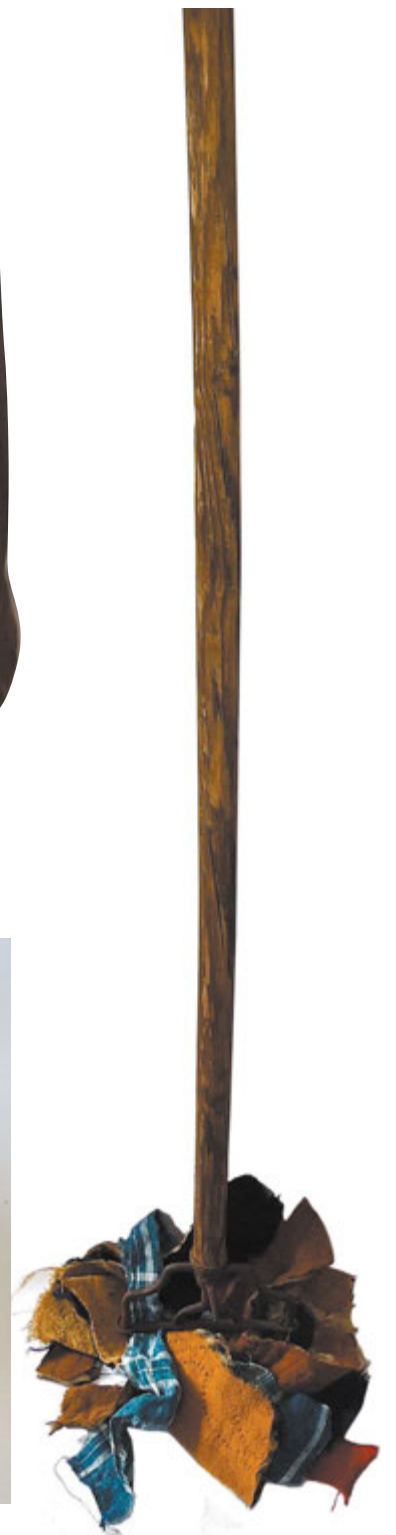
Fine American Flamestitch  
Pocket Book, Dated "FEB 14 1786"  
Inside Granny Note



Rare American Hand-Towel Dated 1777



Rare Early American Heart Chopper



Rare 18th c.  
Mop with  
Homespun Rags



18th - Early 19th c. Stone Sink : Provenance Don Carpentier



Booth No. 36

[www.sharonplatt.com](http://www.sharonplatt.com)

sharon@sharonplatt.com • 603-430-7556 • PO Box 723, New Castle, NH 03854



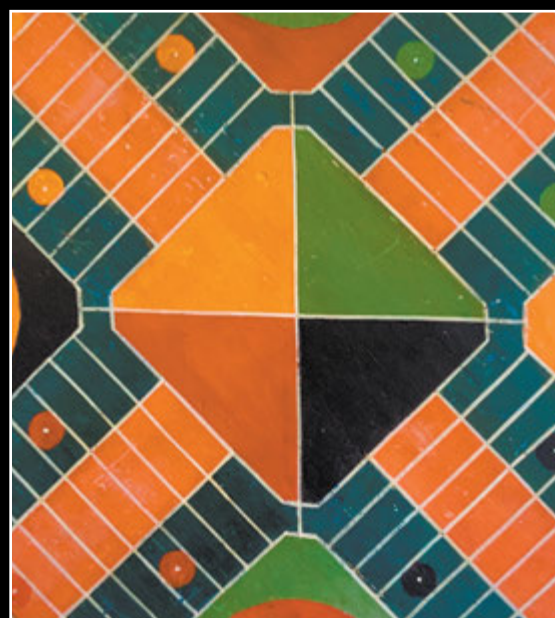
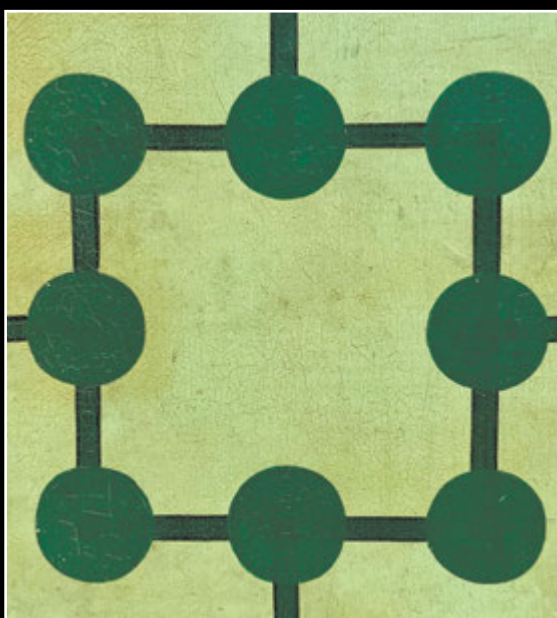


NH-34 — Antiques and The Arts Weekly — August 2, 2019

THE 62ND ANNUAL  
New Hampshire Antiques Show

SPECIAL  
SHOW  
SECTION

# Jewett-Berdan



VISIT US IN BOOTH #47, LOWER LEVEL

Thomas J. Jewett



15 Hopkins Hill Road  
Newcastle, Maine 04553  
[jewett-berdan@roadrunner.com](mailto:jewett-berdan@roadrunner.com)  
(207) 563-3682



Charles P. Berdan





SPECIAL  
SHOW  
SECTION

THE 62ND ANNUAL  
New Hampshire Antiques Show

# Jewett-Berdan



Maine dressing table with an ivory ground and polychrome fruit and floral motifs; attributed to William A. Mason of Fryeburg, Maine circa 1829. A similar example can be found in Dean A. Fales, Jr. and Robert Bishop's book, *AMERICAN PAINTED FURNITURE 1660-1880*, pp. 379-380 from the Henry Ford Museum; Dearborn, MI. Destroyed in a fire.

Please stop by booth #47, lower level and see this beautiful and rare piece of Maine painted furniture.

VISIT US IN BOOTH #47, LOWER LEVEL

Thomas J. Jewett



15 Hopkins Hill Road  
Newcastle, Maine 04553  
jewett-berdan@roadrunner.com  
(207) 563-3682



Charles P. Berdan





NH-36 — Antiques and The Arts Weekly — August 2, 2019

## THE 62ND ANNUAL New Hampshire Antiques Show

SPECIAL  
SHOW  
SECTION



JUDITH & JAMES MILNE, Kingston, N.Y. — Star millweight.



M. FINKEL & DAUGHTER, Philadelphia — Important sampler from the highly regarded "Peace, Love and Charity" group by Elizabeth Smith of Belmont County, Ohio, circa 1828. Sampler size is 18½ by 18 inches.



DOUGLAS R. WYANT ANTIQUES, Cassopolis, Mich. — Patriotic frame.



OLDE HOPE ANTIQUES, INC, New Hope, Penn. — Heart weather-vane, probably New England, circa 1800-40, measuring 9 inches tall by 35 inches long.

JEWETT-BERDAN  
ANTIQUES,  
Newcastle, Maine  
— Charming  
hooked rug of a  
family with their  
beloved pet horse  
and a cat, circa  
1860.



## *Spruce Gum Anyone?*

Come see me in Booth #5



Maine spruce gum box Chip carved,  
book form with gilt painted edges that slide  
Found in Gorham Maine

**MG**  
Art & Antiques

Merrimac, MA

❖ 603-642-8948

❖ mgartandantiques@gmail.com





SPECIAL  
SHOW  
SECTION

# THE 62ND ANNUAL New Hampshire Antiques Show



## Hollis E. Brodrick

### Arts & Artifacts of Early New England



Rare Colonial New England oval top, trestle foot table- probably coastal Massachusetts, c1720-30



Rare Early American, wooden hub chandelier, with original tin candle cups c1780-1810



Rare silver "Church Warden's" pipe (19 ins) Hallmarked 1803



Rare 18<sup>th</sup>c "wedding cake" hall lantern (19 in) in early red paint, c1750-1775

Extremely Rare Wm and Mary andirons, c1705-15.  
(See "Early American Andirons" by Bowers, pg. 149- for matching creepers at Winterthur!)



Part of a selection of English and German export Ceramics c1720-50

English Delftware punch bowl, inscribed: "Success To Trade" c1775



Open by Appointment • 171 Washington Street, Portsmouth, NH  
Mailing Address: PO Box 30 | Portsmouth, NH 03802 | 603-828-6158  
email: [hollisantiques@gmail.com](mailto:hollisantiques@gmail.com)

*All items subject to prior sale*







# THE 62ND ANNUAL New Hampshire Antiques Show

SPECIAL  
SHOW  
SECTION



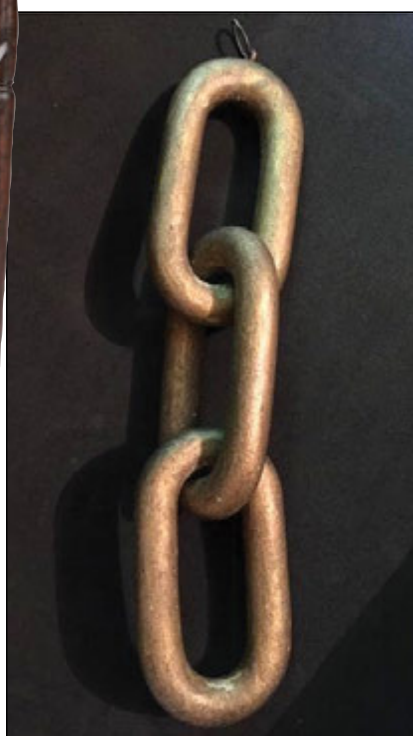
**MISSOURI PLAIN FOLK**, Sikeston, Mo. — Diminutive mortar and pestle in original blue paint. Mortar alone stands 6 inches tall; 11 inches overall.

**JOHN SIDELI ANTIQUES & FINE ART**, Westport, Mass. — Queen Anne armchair in original red paint.

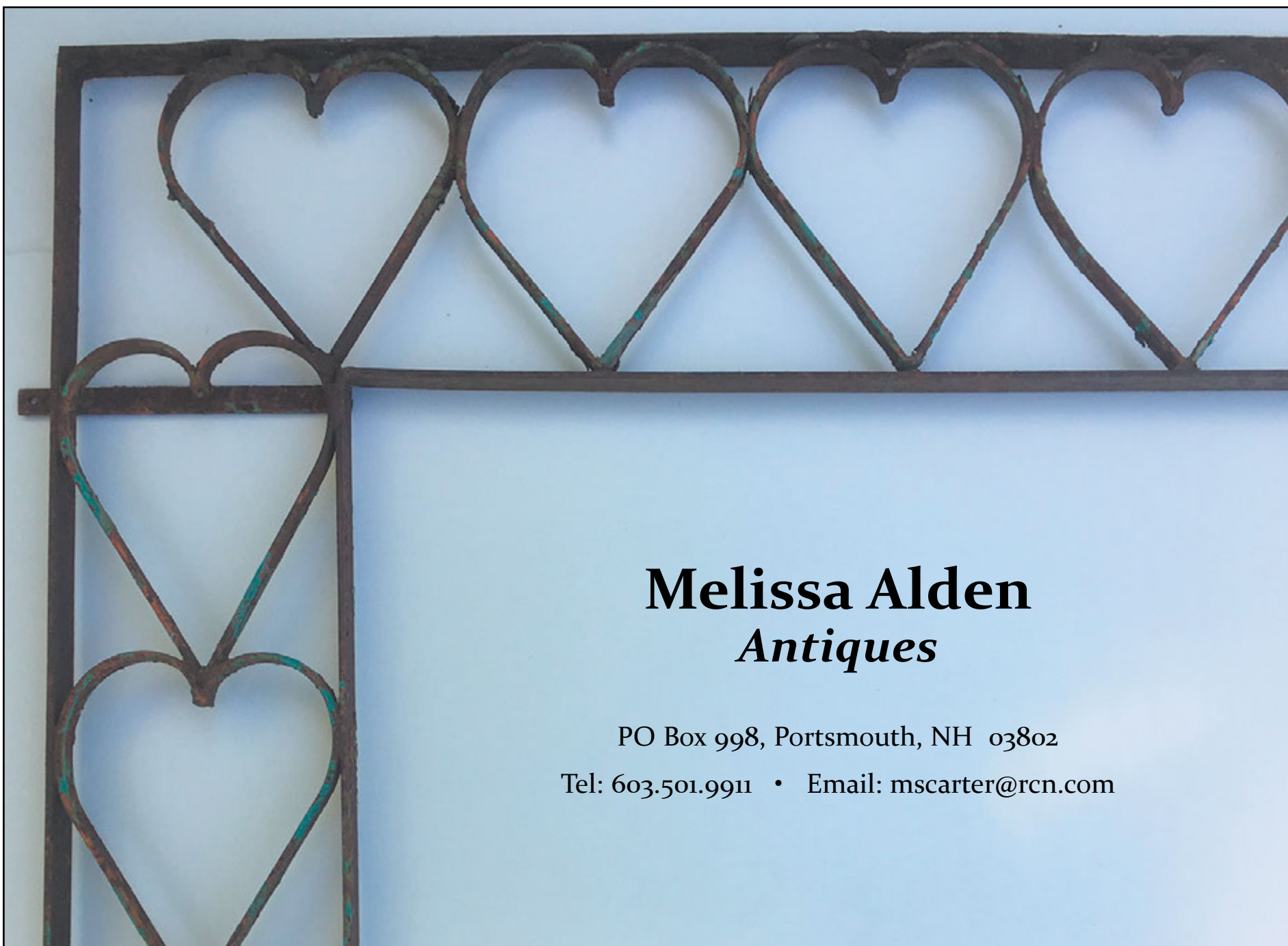
**CHRISTOPHER AND BERNADETTE EVANS ANTIQUES**, Waynesboro, Va. — Late Nineteenth Century Odd Fellows carved and painted three-link chain, great surface, 13½-inch length total.



**KEN & ROBIN PIKE**, Nashua, N.H. — Three graduated early Twentieth Century American shield candy boxes.



**RESSER-THORNER ANTIQUES**, Manchester, N.H. — “General Henry Dearborn owned by Mary G. Ray,” gilt highlights, watercolor background, 10 by 7½ inches (sight); Maine Historical Society Library Bulletin, volume 7 “Miss Mary G. Ray, a descendent of General Henry Dearborn.”



## Melissa Alden *Antiques*

PO Box 998, Portsmouth, NH 03802  
Tel: 603.501.9911 • Email: [mscarter@rcn.com](mailto:mscarter@rcn.com)





SPECIAL  
SHOW  
SECTION

# THE 62ND ANNUAL New Hampshire Antiques Show



Maine country gift box, 1860. 9½" x 5½" x 4½". The exterior is done in a bold painted design with a New Year's inscription under the lid. Minor imperfections.

Please visit us in booth 23. We will have a selection of books, ephemera, Shaker and decorative arts.

## DeWolfe & Wood Rare Books

P.O. Box 425

2 Waterboro Rd., Alfred, ME 04002

(207) 490-5572

dewolfeandwood@roadrunner.com • [www.dwbooks.com](http://www.dwbooks.com)

*Successors to Tuttle's of Vermont serving readers since 1830*







# THE 62ND ANNUAL New Hampshire Antiques Show

SPECIAL  
SHOW  
SECTION



**JEFF & HOLLY NOORDSY**, Cornwall, Vt. — Colorful late Nineteenth or early Twentieth Century hooked rug.



**BOB JESSEN & JIM HOHNWALD**, Fitzwilliam, N.H. — Selection of early tin lighting, including a wonderful, large punched tin lantern with five interior candle sockets.



**JASON SAMUEL ANTIQUES**, Milford, N.H. — Nineteenth Century pie safe with original surface and pierced tin panels, measuring 65½ inches high by 40 inches wide by 18¼ inches deep.



**GARTHOEFFNER GALLERY**, Lititz, Penn. — Early 1820 glass-eyed pre-Grenier with original dress.



**RESSER-THORNER ANTIQUES**, Manchester, N.H. — Partially printed family record of Timothy Smith and Betsey Clark by Richard Brunton, with hand coloring, some staining, circa 1823, signed "RB" lower center, 8½ by 6½ inches (sight).



**STEVEN F. STILL ANTIQUES**, Manheim, Penn. — Hand painted circa 1900 tin doll carriage made in Germany by the Marklin toy company, measuring 9 inches wide by 6½ inches high.

## Nancy & Gene Pratt

Victor, New York • 585.330.7203



"Frederick & Frances Pierson miniature. Taken 22 Nov. 1843 by Mr. Dalee of Pittsford, NY"



## A collage of various antique and folk art items. The central focus is a dark green wooden chest with a brass keyhole. On top of the chest are several objects: a small terracotta jar, a framed silhouette of a person, a small blue and white ceramic vase, and a large terracotta jar. Above the chest is a quilt block with a geometric pattern of purple, teal, and yellow. To the right of the chest is a large, textured ceramic jar. The background is a collage of various textures and patterns, including wood grain, a portrait of a man, a floral pattern, a silhouette of a person, a quilt block, a wooden chest, a ceramic jar, a small vase, and a framed portrait.

cevans62@yahoo.com





# THE 62ND ANNUAL New Hampshire Antiques Show

SPECIAL  
SHOW  
SECTION



Mid 20th C. Folkart carved wooden cat  
22" long x 15" tall



Circa 1900, 6" long Noah's Ark with animals,  
figures and display stand.



Circa 1867, Goodwins,  
doll pushing metal carriage.

## KEN & ROBIN PIKE

43 Ayer Road  
Nashua, NH 03064

603-882-3367 • rrpcc101a@comcast.net



VILLAGE BRAIDER, Plymouth, Mass. — Carved and painted wood panel of  
a watermelon by Ralph Eno, 14½ inches tall by 46 inches wide, circa 1950s.



NORWOODS' SPIRIT OF AMERI-  
CA, Timonium, Md. — Delightful  
paint-decorated wall pocket in a  
rare figural form; circa third  
quarter Nineteenth Century.



PRATT'S ANTIQUES, Victor, N.Y. —  
Queen Anne armchair in red paint,  
circa 1780.



JEWETT-BERDAN ANTIQUES, Newcastle, Maine — Small late Nineteenth  
Century sand sign, "Dining Room."



PAUL D. SULLIVAN ANTIQUES, Manchester, N.H. — WP Howard  
Inn scene oil on heavy artist's cardboard, signed RH Waite, Cape  
artist and illustrator, circa 1940, probably a tourism promotion.  
Framed. 53 inches wide by 42 inches high.



IAN McKELVEY ANTIQUES, South Windham, Conn. — Nineteenth Centu-  
ry wooden fish weathervane.





SPECIAL  
SHOW  
SECTION

THE 62ND ANNUAL  
New Hampshire Antiques Show

## Rooster Weathervane

First half of the 19th century, Copper, 28" tall x 33" long



Michael Whittemore  
Antiques & Folk Art

980 Coronado Drive, Punta Gorda, Florida 33950  
860-428-1135





# THE 62ND ANNUAL New Hampshire Antiques Show

SPECIAL  
SHOW  
SECTION



DeWOLFE & WOOD, Alfred, Maine — Maine Shaker work box, circa 1900, 4½ by 3½ by 2 inches. There is loss to the kid trim.



KATE A. ALEX, Warner, N.H. — Pair of early tall wooden obelisks, tops in a painted green faux marble, removable bases in a black faux marble paint, 43 inches tall on a 13-inch-square base.



JUDITH & JAMES MILNE, Kingston, N.Y. — Sailor whirligig in old paint.



FRANK & BARBARA POLLACK, Highland Park, Ill. & Sunapee, N.H. — A carved and painted folk art figure of a prison doctor carrying his medical bag, American, is said to have been made by an inmate while in an Iowa prison. It is made of wood, wool and cotton, and his handmade suit, vest and striped shirt were made from prison uniforms, circa 1900. Condition: Light surface scratches, a few scattered areas of paint loss and minor areas of loss to the fabric consistent with age and use. The figure measures 15¼ inches tall (including the base: 19¼ inches tall).



CHRISTOPHER AND BERNADETTE EVANS ANTIQUES, Waynesboro, Va. — Early Twentieth Century fixed handled market basket found in the Shenandoah Valley of Virginia, measuring 14 inches high overall.



## THOMAS R. LONGACRE ANTIQUES



[www.thomasrlongacre.com](http://www.thomasrlongacre.com)

[tom@thomasrlongacre.com](mailto:tom@thomasrlongacre.com)

43rd  
YEAR



603.876.4080

Marlborough, NH

Booth  
#3

19<sup>th</sup> century patriotic three tiered poplar wood flag holder in attic finish and decorated with 12 American flags. Total height is 57 inches.





SPECIAL  
SHOW  
SECTION

THE 62ND ANNUAL  
New Hampshire Antiques Show

# FIRE SALE at Booth #8!



A fabulous three part cast iron fireback, one large back wall and two smaller side wall panels, the center depicting a round image of three witches around a cauldron, and each side depicting an oval image of a single witch, one flying and one standing, with miscellaneous skulls, crows, owls, black cats, and serpents. Created by American artist John Whetten Ehninger (1827-1889). Ehninger was born in New York, studied at Columbia University, and then continued his studies in France, Germany and Italy. He returned to New York, becoming a member of the National Academy of Design. He is probably most well known as a genre portrait painter and illustrator, with his illustration work featured in Longfellow's "Courtship of Miles Standish" and Tennyson's "Idylls of the King." This fireback set is in very good overall condition, retaining the surface it had when removed from its original fireplace, with evidence of some creosote and some rust visible on each smaller panel lower corner, as well as slight discoloring on the middle lower panel. The back of the center panel shows some plaster or cement residual from its original installation. The right side panel is incised below the oval image "Copyright 1866 J.W. Ehninger." "No 104" is embossed on the left side panel (verso), and "No 0104" embossed on the right side panel (verso).



"Golliwog" fireplace broom.  
Walnut, 22" long.  
Circa 1905-1914.  
Marked Biltmore, N.C.

A collection of Colonial  
American puddle-cast  
figural andirons attributed to  
Joseph Webb of Boston.



RESSER-THORNER  
ANTIQUES  
*A single-owner shop in the New England tradition*

603-540-4712  
695 River Road, Manchester, NH 03104  
By Appointment







# THE 62ND ANNUAL New Hampshire Antiques Show

SPECIAL  
SHOW  
SECTION



M. FINKEL & DAUGHTER, Philadelphia — Fine Adams County, Pennsylvania, sampler by Mary Ann Baugher of Berlin, taught by Lydia Kesselring, 1832. Sampler size is 17¼ by 18 inches.



JEWETT-BERDAN ANTIQUES, Newcastle, Maine — Carved wood and paint match holder with three birds and bird nest.



PETER SAWYER ANTIQUES, Exeter, N.H. — Gilt mirror with original tablet depicting the battle between the USS Constitution and the HMS Guerriere during the war of 1812.



NEWSOM & BERDAN ANTIQUES & FOLK ART, Thomasville, Penn. — Early hearth broom.



CHERRY GALLERY, Damariscotta, Maine — Hand forged floral andirons in original paint, each measuring 17 inches wide by 25 inches deep by 27 inches high.

FRED.GIAMPIETRO



Cushing & White Liberty Weathervane

FOLK ART  
AMERICANA  
MODERN

315 Peck Street  
New Haven, CT 06513  
203.777.7760

Gallery Hours  
Most Mondays or by appointment

[www.newhavenauctions.com](http://www.newhavenauctions.com)





SPECIAL  
SHOW  
SECTION

THE 62ND ANNUAL  
New Hampshire Antiques Show



# Ian McKelvey Antiques

South Windham, CT  
860-208-7809



Circa 1700-1710 Connecticut River  
Valley 3-drawer blanket chest

Mid-19th Century life-size marble  
sculpture of "Charity"

## THE TAILGATE - Once a month on Thursdays

Walker Homestead, 19 Martin Rd., Brookfield, MA 01506

(Upcoming dates: July 25, August 22, September 19, October 24 - 9:00 AM SHARP!)

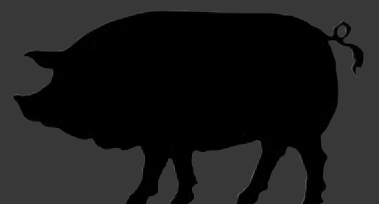
## Flying Pig Antiques - Friday thru Monday 10-5

867 Rt 12, Westmoreland, NH 03467 40+ dealers!

*\*\*\*Special NH Antiques Week Hours Thurs. 8/1-Mon. 8/12, 10-7, wine & cheese after 5*

## Flying Pig Auctions - Live Online

LiveAuctioneers.com/auctioneer867/flying-pig-auctions/  
(next auction September 16)







THE 62ND ANNUAL  
New Hampshire Antiques Show

SPECIAL  
SHOW  
SECTION



**JEWETT-BERDAN  
ANTIQUES, Newcastle,  
Maine** — A 36-inch-tall  
African American rag  
doll, circa 1910, found  
in Virginia.



**DOUGLAS R. WYANT ANTIQUES, Cassopolis,  
Mich.** — House shelf.



**JEFF & HOLLY NOORDSY, Cornwall, Vt.** — A wonderful  
collection of Nineteenth Century New England demijohns.



**DENNIS & DAD ANTIQUES, Fitzwilliam, N.H.** — Yellow-  
ware chamber pot with blue, brown and white earth-  
worm decoration, circa 1840.



**STEVEN F. STILL ANTIQUES, Manheim, Penn.** —  
Blackhawk horse weathervane attributed to Harris  
and Company, Boston, 27 inches long. This circa 1880  
molded copper weathervane has cast zinc ears and a  
nicely weathered surface.

# Cherry Gallery



Cree Birch Bark Canoe, circa 1920

UNCOMMON SIZE PERFECT FOR INDOOR DISPLAY: 12' long, 32" wide, 15" high



Damariscotta, ME 207.563.5639 [cherrygallery.com](http://cherrygallery.com)





SPECIAL  
SHOW  
SECTION

THE 62ND ANNUAL  
New Hampshire Antiques Show

# Nancy Fishelson



*Early Folk Art Swan Decoy*

40"W

*Carved wood retaining an old white painted surface. North Carolina, circa 1900.*

*Provenance Kinnaman and Ramaekers*

Woodbury, CT ■ (310) 508-1446 ■ [nancyfishelson.com](http://nancyfishelson.com)





# THE 62ND ANNUAL New Hampshire Antiques Show

SPECIAL  
SHOW  
SECTION

**PAUL D. SULLIVAN ANTIQUES, Manchester, N.H.** — Cast iron Greek Revival door knocker, stamped “Wilson’s Patent” on the reverse, from the Wilson Foundry, 8½ inches overall, New London, Conn., active 1841–55.



**MISSOURI PLAIN FOLK, Sikeston, Mo.** — Double-sided wooden sign advertising “Beauty Studio,” in original paint and condition, circa 1930s, found in New Hampshire, measuring 25½ by 15½ inches.



**JUDITH & JAMES MILNE, Kingston, N.Y.** — Sampling of a great private collection of millweights.



**SCOTT BASSOFF/  
SANDY JACOBS  
ANTIQUES, Swampscott, Mass.** — Wood and metal painted patriotic star light.



**CHRISTOPHER AND BERNADETTE EVANS ANTIQUES, Waynesboro, Va.** — Carved and painted folk art frame in the form of an anchor, 13½ inches tall.



**SAMUEL W. FORSYTHE, Columbus, Ohio** — Early spill box.

## Jeffrey Roelof ANTIQUES

269-271-1799

folkart1@yahoo.com



Decorative carving. Trout and Pike in boat. Oscar Peterson. Cadillac Michigan. ca.1930's. L. 6".

Booth 6



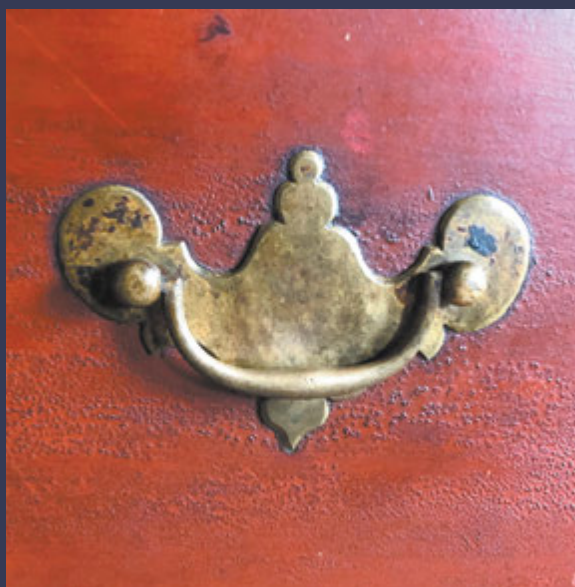




SPECIAL  
SHOW  
SECTION

THE 62ND ANNUAL  
New Hampshire Antiques Show

*Come see all this and more at booth 62 NHADA August 8-10, 2019*  
**Bill Kelly and Courtney Walsh**



*18th and 19th c American  
Furniture and Accessories*

936 Cape Road  
Limington, Maine 04049  
207-838-2849  
979-204-8734  
[Bill.kelly419@yahoo.com](mailto:Bill.kelly419@yahoo.com)



Hard to believe it's been a year





# THE 62ND ANNUAL New Hampshire Antiques Show

SPECIAL  
SHOW  
SECTION



JOHN SIDELI ANTIQUES & FINE ART, Westport, Mass. — Circa 1870 velocipede in original green yellow and black paint.

RESSER-  
THORNER  
ANTIQUES,  
Manchester,  
N.H. — Keene,  
N.H., light  
infantry car-  
tridge box and  
canteen, circa  
1840s.



VILLAGE BRAIDER, Plymouth, Mass. — Watercolor of a flea, late Nineteenth Century, 9 by 12 inches.



STEPHEN-DOUGLAS ANTIQUES, Wal-  
pole, N.H. — Large American treen covered  
sugar tub with original sponge  
painted decoration, first half of the  
Nineteenth Century.

DeWOLFE & WOOD, Alfred, Maine — A  
1784 issue of Thomas's *Massachusetts Sun*  
or *Worcester Gazette*, June 17, 1784 with a  
masthead engraved by Paul Revere.



OLDE  
HOPE

AMERICAN FOLK &  
DECORATIVE ARTS  
OF DISTINCTION

By Appointment in NYC and New Hope  
215-297-0200 • info@oldehope.com  
OldeHope.com



**James Bard (1815-1897)** • Signed, inscribed and dated "1855" • Oil on canvas laid down to Masonite, 29½" x 52"  
**Exhibition:** Richmond, Virginia, Virginia Museum of Fine Art, and traveling, "American Folk Painting: Selections from the Collection of Mr. and Mrs. William E. Wiltshire III," 29 November 1977 – June 1979 (cat. no. 46).  
New York, Museum of American Folk Art, "Celebrate the Hudson," 28 October – 2 November 1980.  
**Literature:** Peluso, Jr., The Bard Brothers: Painting America Under Steam and Sail (1997), p. 168.







SPECIAL  
SHOW  
SECTION

# THE 62ND ANNUAL New Hampshire Antiques Show



JOHN CHASKI, INC, Camden, Del. — Naive nude in mahogany, American, second quarter Twentieth Century, 24½ inches tall.



IAN McKELVEY ANTIQUES, South Windham, Conn. — Granulated and brown sugar handled pantry boxes.



PRATT'S ANTIQUES, Victor, N.Y. — Inlaid tiger maple stand, New England, circa 1840.



AMERICAN SAMPLER, Barnesville, Md. — Snowy owl post decoy, full-figure, cast iron, circa 1930s, Swisher & Cole, measuring 12½ inches high by 6¾ inches wide.

PEWTER & WOOD ANTIQUES, Enfield, N.H. — Basket in original old blue grey paint 8½ inches high by 12 inches wide diagonally. Maker: Ben Higgins, Chesterfield, Mass. (1894–1981).

JEWETT-BERDAN ANTIQUES, Newcastle, Maine — Incredible pair of presentational canoe paddles in the original chrome yellow paint with star and moon decoration in original red and green paint. They measure 24 inches long.



## TUCKER FREY ANTIQUES

259 MAIN STREET SOUTH  
WOODBURY, CT 06798

(203) 263-5404 • TFREY90549@AOL.COM

WE'VE MOVED  
ACROSS THE STREET!  
Now Located at  
259 Main St. South,  
Woodbury, CT



Two Pair of English Brass Queen Anne Candlesticks



Two Slip Decorated Connecticut Redware Plates



Two Wrought Iron 18th Century Pipe Tongs







# THE 62ND ANNUAL New Hampshire Antiques Show

SPECIAL  
SHOW  
SECTION



JOHN CHASKI, INC, Camden, Del. — Ink and watercolor family register, Raymond, N.H., circa 1815, 7½ by 8½ inches sight.



JEWETT-BERDAN ANTIQUES, Newcastle, Maine — Band box in wood blue ground with original paint decoration, circa 1845.



AMERICAN SAMPLER, Barnesville, Md. — Terrier dog umbrella stand, cast iron, circa 1900-20, 24¼ inches high by 13¼ inches wide by 7 inches deep.

CHERRY GALLERY, Damariscotta, Maine — Exceptional sculptural rustic planter adorned with bird figures, 21 inches wide by 17 inches deep by 38 inches high.



STEVEN F. STILL ANTIQUES, Manheim, Penn. — Circa 1900 German carved pine soldier whirligig with the original painted surface; height 14 inches.



SCOTT BASSOFF/  
SANDY JACOBS  
ANTIQUES, Swamp-  
scott, Mass. — Nine-  
teenth Century Vic-  
torian enameled  
brooch with cherubs.



Cast Iron Rabbit shooting gallery target. 19" h.

## JUDITH & JAMES MILNE

Booth 14

NYC & KINGSTON, NY

917 402 1778 | 917 754 5454

[www.milneinc.com](http://www.milneinc.com) | [jmilneantiques@gmail.com](mailto:jmilneantiques@gmail.com)



Cast zinc Jazz club sign in old paint and surface. 30" h.



Cast Iron Rochester Ironworks Horse. Great old surface.



Cast Zinc Auto Repair Sign. 7 feet and all original.





SPECIAL  
SHOW  
SECTION

THE 62ND ANNUAL  
New Hampshire Antiques Show



A.E. RUNGE JR ORIENTAL RUGS, Yarmouth, Maine — Nice small Persian Heriz carpet, 9 feet 11 inches by 6 feet 5 inches, circa 1920s, in fine condition.



JEFF & HOLLY NOORDSY, Cornwall, Vt. — Large (11-7/8 inches) attic-found Shaker box with original painted surface.



JASON SAMUEL ANTIQUES, Milford, N.H. — Early Twentieth Century tin automobile turn signal with retractable hand; 14 inches high by 17 inches wide.



KEN & ROBIN PIKE, Nashua, N.H. — Mid-Nineteenth Century document box in original paint, measuring 14 inches long by 7½ inches wide by 5½ inches high.

## MARY AND JOSHUA STEENBURGH

ANTIQUE FURNITURE  
AND FOLK ART

Pike, New Hampshire



Indian Chief Wall Pocket  
Relief Carved and Painted

early 20th century  
New England

24" high x 16" wide

phone: 603.303.3072

e-mail: [josh@steenburgh.com](mailto:josh@steenburgh.com)  
website: [www.maryandjoshua.com](http://www.maryandjoshua.com)





# THE 62ND ANNUAL New Hampshire Antiques Show

SPECIAL  
SHOW  
SECTION

**VILLAGE BRAIDER, Plymouth, Mass. —** Oil painting on canvas, Agapito Labios, young girl in front of the Palacio Nacional, Mexico, 1930, 24-by-18-inch canvas



**KATE A. ALEX, Warner, N.H. —** Late 1800s Victorian-era horn chair, original upholstery, excellent original condition, 32 inches tall.

**DeWOLFE & WOOD, Alfred, Maine —** Section of a wrapper used to wrap goods sold by Eleazar Wyer, goldsmith, Portland, Maine, 6 by 6 inches, circa 1820.



**BOB JESSEN & JIM HOHNWALD, Fitzwilliam, N.H. —** Set of four New England stepdown Windsor side chairs in original paint and decoration, circa early 1800s.



**MG ART & ANTIQUES, Merrimac, Mass. —** Cast iron shooting gallery target, likely Hoffmann, in-use repaint.



## Jonathan Trace

BY APPOINTMENT  
POST OFFICE BOX 7106  
PORTSMOUTH, NH 03802  
(603)431-1197  
JTRACEANTIQUES@MAC.COM  
We are always interested in  
purchasing fine American silver and  
furniture-single items or collections.



**AMERICAN SILVER CANN**  
Samuel Minott, Boston, circa 1760





SPECIAL  
SHOW  
SECTION

# THE 62ND ANNUAL New Hampshire Antiques Show



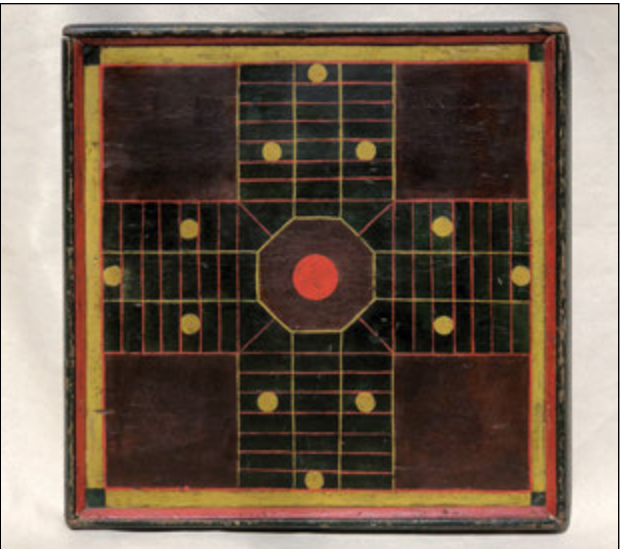
NEWSOM & BERDAN ANTIQUES & FOLK ART, Thomasville, Penn. — Panel of early decorated blanket chest dated 1806



DENNIS & DAD ANTIQUES, Fitzwilliam, N.H. — “Prosperity to the United States of America” Census and States Liverpool pitcher showing US population on one side and 16 US States Chain with Eagle and Shield on obverse, 7¾ by 8½ inches across handle.



DOUGLAS R. WYANT ANTIQUES, Cassopolis, Mich. — Star gambling wheel.



STEPHEN-DOUGLAS ANTIQUES, Walpole, N.H. — Bold graphic painted Parcheesi game board, Nineteenth Century.



JEWETT-BERDAN ANTIQUES, Newcastle, Maine — Detail of an early folk art cane in original paint and surface.

PRATT'S ANTIQUES, Victor, N.Y. — Salvador Teran Taxco necklace, Nobleman design.



## Rare & Important Spanish Colonial Bell Associated with The Taos Pueblo in New Mexico



Taos Pueblo, continuously occupied for over 1000 years is the only Native American Pueblo that is both a Unesco World Heritage Site and a National Historic Landmark. Throughout several centuries the Spanish mission and church of San Geronimo was destroyed, and rebuilt many times. Franciscans returned and began erecting a new church in 1706 which was completed in 1726.

We believe this bell dated 1717 bearing the Spanish Coat of Arms and inscribed San Geronimo to be associated with the Spanish Mission and Church of the Taos Pueblo which makes it an extremely important historical artifact. Overall size including early wooden base 13" x 7" x 14" tall. Bell only 6" high x 5 1/2" dia.

Wrought iron mounting is quite early but possibly a second iteration.



### John Sideli Antiques & Fine Art

820 Horseneck Rd East, Westport, MA 02790

By Appt. 508-938-5355 cell 413-717-1438

johnsideli@hotmail.com • www.johnsidelifineart.com





NH-58 — Antiques and The Arts Weekly — August 2, 2019

# THE 62ND ANNUAL New Hampshire Antiques Show

SPECIAL  
SHOW  
SECTION



**JOHN SIDELI  
ANTIQUES & FINE  
ART, Westport,  
Mass. — Vibrant  
small size New  
England dome top  
box, measuring 19½  
by 9 by 9 inches.**



**HOLLIS E. BRODRICK, Portsmouth, N.H. —  
Early Nineteenth Century unusual American  
primitive pewter reflector sconce with origi-  
nal wooden back.**



**MG ART & ANTIQUES, Merrimac,  
Mass. — Glasgow School brass  
scone, repousse decorated with  
single nozzle, circa 1920.**



**FRANK & BARBARA POLLACK,  
Highland Park, Ill. & Sunapee,  
N.H. — An extraordinary painted  
and decorated Odd Fellows Lodge  
surround, American, circa 1880s. It  
is said that it came from the Fair-  
field Lodge #236 in Montoursville,  
Penn. It is an exceptional design  
and form in bright red, blue and  
gold and measures 102½ inches  
wide by 92 inches high.**



# Stephen Score inc. • [stephenscoreantiques@gmail.com](mailto:stephenscoreantiques@gmail.com)

## ONE FOR THE BOOKS!

**Horse & Sulky Weathervane**  
sheet iron; L 33 x H 15 inches  
Found in Michigan; 1900 - 20"







SPECIAL  
SHOW  
SECTION

# THE 62ND ANNUAL New Hampshire Antiques Show



**DENNIS & DAD ANTIQUES**, Fitzwilliam, N.H. — Polychrome decorated mocha “cat’s-eye” pitcher with green engine turning at top, early Nineteenth Century, 6¼ inches high by 9¼ inches across handle.



**M. FINKEL & DAUGHTER**, Philadelphia — Excellent Monmouth County, New Jersey, sampler featuring a sailing ship and house and lawn scene by Rebecca W. Morris of Shrewsbury, 1827. Sampler size is 17½ by 16¾ inches.



**PEWTER & WOOD ANTIQUES**, Enfield, N.H. — Miniature sailing ship, original panting, rigged, 14¾ inches long by 11½ inches high, found on Cape Cod. Written on bottom: “Owned by S.M.P. since 1935, origin unknown.”



**DAVID A. SCHORSCH/EILEEN M. SMILES**, Woodbury, Conn. — Rare frontal portrait by Rufus Porter depicting Judah Wetherbee, Massachusetts, circa 1830, watercolor on paper, 3¾ by 2-7/8 inches, with original frame.

**RESSER-THORNER ANTIQUES**, Manchester, N.H. — “John Wilkes,” reversed painted mezzotint after a portrait by Robert Edge Pine, 5 by 4 inches (sight), circa 1768.

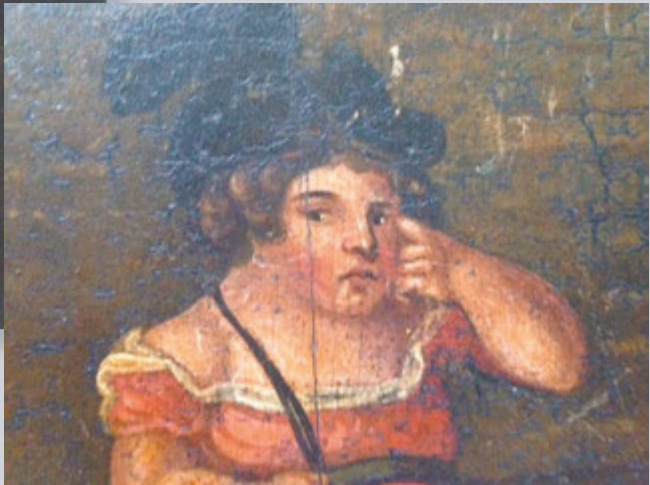


The 62nd Annual  
New Hampshire Antiques Show  
August 8 - 10, 2019

THURSDAY & FRIDAY: 10AM - 7PM  
SATURDAY: 10AM - 4PM



"Not Cry About It"  
Early 19thc oil on panel of  
A Girl with Dog.  
11.5w X 10.5h



Paul  
Sullivan  
ANTIQUES

PO Box 3773  
Manchester, NH 03105  
603-669-8886





THE 62ND ANNUAL  
New Hampshire Antiques Show

SPECIAL  
SHOW  
SECTION

THOMAS M.  
THOMPSON  
ANTIQUES

Pembroke, NH  
(603) 496-8497



Carved horse weathervane  
Pembroke, N.H. origin, 32" long



Sign that originally hung outside Adolf Becker's Saloon  
located at Granite Square, Manchester, N.H.  
Late 19th early 20th Century.  
Obtained from his family.  
32 1/2 inches by 30 1/2 inches.



BILL KELLY & COURTNEY WALSH, Limington, Maine — Watercolor birth record for Nancy Hill, dated 1818.



STEPHEN-DOUGLAS ANTIQUES, Walpole, N.H. — Two-sided game board with checkers and parcheesi — exciting designs, circa 1900.



JOHN CHASKI, INC, Camden, Del. — Nineteenth Century blue-painted English canteen, 7½-inch diameter.



JOHN H. ROGERS ANTIQUES, Elkins, N.H. — Set of six acorn spatter plates.





SPECIAL  
SHOW  
SECTION

# THE 62ND ANNUAL New Hampshire Antiques Show



CHERRY GALLERY, Damariscotta, Maine — Oil on board of a bull moose on a shoreline, 28 inches wide by 22 inches high.



KATE A. ALEX, Warner, N.H. — Very early pair of cast iron black sailor andirons, old black paint, 17 inches tall. Purportedly cast in Bedford, Mass. Very heavy, not later copies.



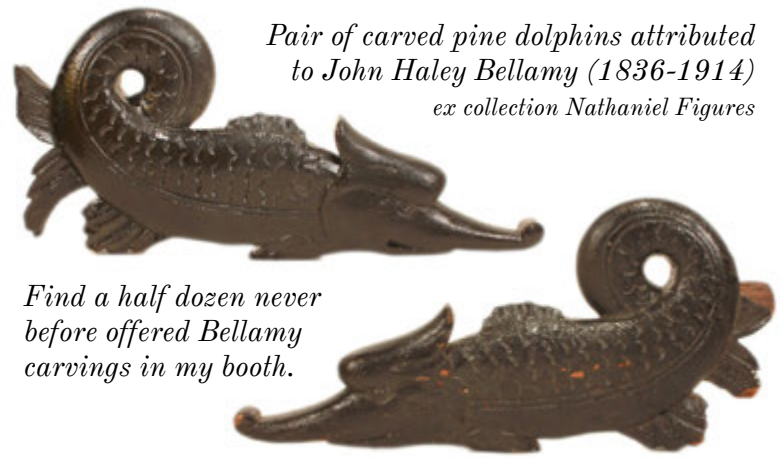
GARTHOEFFNER GALLERY, Lititz, Penn. — Pair of exercise clubs in red and gold paint with stars.



JEWETT-BERDAN ANTIQUES, Newcastle, Maine — Carved soapstone hand and ring sailor made whimsy.



DeWOLFE & WOOD, Alfred, Maine — A Shaker fixed handled carrier, with traces of yellow paint, 12 3/4 inches long. There is a split on the other side.



Pair of carved pine dolphins attributed to John Haley Bellamy (1836-1914)  
ex collection Nathaniel Figures

Find a half dozen never before offered Bellamy carvings in my booth.

## OLD AS ADAM.

Adam Irish ~ Antiques & Americana



Booth  
No 11

Miniature naive watercolor portrait of Dr. Joel Ruggles Carpenter (1788-1852)  
New Hampshire, c. 1830 (2" x 2")



Diminutive sponge-painted chest, Maine, c. late 19th century (18" x 14.5" x 7.5")

## SHOP ONLINE

at [oldasadam.com/goods](http://oldasadam.com/goods)

New pleasing & peculiar objects added weekly.



### VISIT THE STORE

33 Ceres Street ~ Portsmouth, NH  
Weekends or by app't



Tel. 603-661-9373  
[adam@oldasadam.com](mailto:adam@oldasadam.com)







# THE 62ND ANNUAL New Hampshire Antiques Show

SPECIAL  
SHOW  
SECTION



IAN McKELVEY ANTIQUES, South Windham, Conn. — American tramp art birdhouse.



M. FINKEL & DAUGHTER, Philadelphia — Important linsey-woolsey Portsmouth, N.H., sampler by Mary P. Stocker, worked at Mary Walden's School, 1818. The sampler size is 15¾ by 17¼ inches.

NEWSOM & BERDAN  
ANTIQUES & FOLK ART,  
Thomasville, Penn. —  
Selection of early dolls.



MG ART & ANTIQUES, Merrimac, Mass. — Configured globe lantern, an unusually large size at 15 inches tall with ring.



STEPHEN-DOUGLAS ANTIQUES, Walpole, N.H. — Small wooden doll with original clothing, mid-Nineteenth Century.



JOHN SIDELI ANTIQUES & FINE ART, Westport, Mass. — Federal eagle plaque measuring 29 by 16 by 6 inches.



**BRIAN J. FERGUSON**

ANTIQUES

1 Main Street, Swansea, MA 02777

508-674-9186

bfergusonswansea@gmail.com





**SPECIAL  
SHOW  
SECTION**

## THE 62ND ANNUAL New Hampshire Antiques Show



**HOLLIS E. BRODRICK**, Portsmouth, N.H. — Pair of early New England tavern sconces, circa 1790–1820, together with an early wall basket with original, dry green paint.



**BOB JESSEN & JIM HOHNWALD**, Fitzwilliam, N.H. — Early flame-stitch “purse” or wallet, Eighteenth Century New England.



**SAMUEL W. FORSYTHE**, Columbus, Ohio — English Eighteenth Century slipware dish, 11-inch diameter.



**DAVID A. SCHORSCH/EILEEN M. SMILES**, Woodbury, Conn. — Birth record for Maria Van Ness, Pompton Plains, N.J., circa 1804, watercolor and ink on paper, 7½ by 9¼ inches.

**PEWTER & WOOD ANTIQUES**, Enfield, N.H. — Eagle pediment, fragment, late Eighteenth/early Nineteenth Century mirror, regilded, measuring 14¾ inches long by 11½ inches high.

## NATHAN LIVERANT AND SON, LLC ANTIQUES



Federal silk on silk  
needlework of Moses  
in the Bulrushes with the  
Pharaoh's Daughters.  
Attributed to the  
Misses Pattens' School,  
Hartford, Connecticut,  
1790 - 1815.



168 SOUTH MAIN STREET  
P.O. BOX 103, COLCHESTER, CT 06415  
(860) 537-2409 FAX (860) 537-0577

Visit us at: [liverantantiques.com](http://liverantantiques.com)  
Follow us at: [www.facebook.com/NLS.antiques](https://www.facebook.com/NLS.antiques)  
[mail@liverantantiques.com](mailto:mail@liverantantiques.com)







# THE 62ND ANNUAL New Hampshire Antiques Show

SPECIAL  
SHOW  
SECTION



**FRANK & BARBARA POLLACK**, Highland Park, Ill. & Sunapee, N.H. — A fine pair of portraits of a young couple seated in red chairs, attributed to George G. Hartwell (1815-1901) of the Prior Hamblen School, oil on unusually large academy board, circa 1840. The sensitive coloring and decorative quality of these paintings are characteristic of the refined stylized work of George Hartwell. The sight size is 24 by 20 inches; 29¼ by 25¼ inches framed. Provenance: Mary Allis, Southport, Conn.

**BILL KELLY & COURTNEY WALSH**, Limington, Maine — Late Eighteenth Century Hudson Valley corner cupboard.



**MG ART & ANTIQUES**, Merrimac, Mass. — Table-top basketball game, patented June 30, 1924, likely a sample. It measures 20½ inches tall.

**STEPHEN DOUGLAS ANTIQUES**, Walpole, N.H. — Wonderful carved and painted wooden bird on original base, circa 1880.

The 62nd Annual  
**New Hampshire Antiques Show**  
**August 8 - 10, 2019**  
THURSDAY & FRIDAY: 10AM - 7PM  
SATURDAY: 10AM - 4PM

SPECIALIZING IN SMALL VINTAGE RUGS AND CARPETS FOR SMALLER SPACES

**A E Runge, Jr**  
**Oriental Rugs**  
[www.rungerugs.com](http://www.rungerugs.com)  
All rugs guaranteed



New Hampshire  
Antiques Show  
- August 8-10

*Exhibiting at:*

Ellsworth Antiques Show at  
Woodlawn, Ellsworth, ME  
- August 15-17



## TWO AMAZING ANTIQUE CARPETS\*



### ONLY SOFT GREEN NW PERSIAN I'VE EVER SEEN

A squarish 11' 4" x 9' 6"  
Antique Persian Karadja - Circa 1900 - Fine Condition  
Soft green, sky (no navy) blue, salmon, coral, medium blue

\* From 2 Maine families that purchased them new over 100 years ago.



### RARE SQUARE SIZE OUSHAK

8' 4" x 8' 4"  
Antique Turkish Oushak  
Circa 1910-20 - V. Fine Condition  
Coral/Salmon, soft green, yellow, brick.

REPAIRS • WASHING • RESTORATIONS

RUGS SENT ON APPROVAL





SPECIAL  
SHOW  
SECTION

# THE 62ND ANNUAL New Hampshire Antiques Show



CHERRY GALLERY, Damariscotta, Maine — Double-sided polychrome café sign on tin with wooden frame, “Home Cooking,” 34½ inches wide by 24 inches high.



JEWETT-BERDAN ANTIQUES, Newcastle, Maine — Memorial with red house circa 1835 on velvet with an Ohio history.



KATE A. ALEX, Warner, N.H. — Rare cast iron Hubley seated monkey doorstop with remnants of old paint and a desirable surface, 7 inches tall.



NORWOODS' SPIRIT OF AMERICA, Timonium, Md. — Two well-carved and polychromed wooden figures, extending greetings to one and other.



VILLAGE BRAIDER, Plymouth, Mass. — Turn-of-the-century nine-drawer spice chest in original surface, 10½ inches high, 12 inches wide by 5½ inches deep.



SCOTT BASSOFF/SANDY JACOBS ANTIQUES, Swampscott, Mass. — Full-size marble statue of child with dove.



• FOLK ART • BASKETS & STONEWARE

• HEARTH ACCESSORIES • AMERICAN COUNTRY FURNITURE • TREENWARE

• REDWARE • EARLY LIGHTING

*Axtell Antiques*

- EARLY AMERICANA -  
RICHARD S. AXTELL

1 River St., Deposit, NY 13754  
Now open by appointment: 607-467-4444  
e-mail: rsaxtell@msn.com  
www.therookerybookery.com

Water Color Family Record - attributed to William Saville of New Hampshire. Like one pictured in the book *Little by Little*. A record of Josiah Davis (born 6-8-1750) who married Abigail Hubbard (born 8-22-1754) on October 20, 1772. They had 14 children, including one set of twins. The children are represented by red and yellow apples, size - 12" x 15"





THE 62ND ANNUAL  
New Hampshire Antiques Show

SPECIAL  
SHOW  
SECTION



DOUGLAS R. WYANT ANTIQUES, Cassopolis, Mich. — Folk carvings.



JOHN CHASKI, INC, Camden, Del. — “National” ink and watercolor patriotic drawing, American, circa 1870, 4 by 4½ inches sight.



M. FINKEL & DAUGHTER, Philadelphia — Rare Vermont silk embroidered memorial with painted figure by Elmina Clarinda Walker of Clarendon, Rutland County, circa 1820. Sight size is 17½ by 21½ inches.



JOHN H. ROGERS ANTIQUES, Elkins, N.H. — Ash burl bowl.

GARTHOEFFNER GALLERY, Lititz, Penn. — Rare 3-foot-tall bakery cookie cutter, circa 1840, Lancaster, Penn.

The 62nd Annual  
New Hampshire Antiques Show  
August 8 - 10, 2019



DeWOLFE & WOOD, Alfred, Maine — A selection of early Nineteenth Century decorative leather books to be shown.



Robert T. Foley  
Antiques

Gray, Maine

207-756-4290



Booth 57





SPECIAL  
SHOW  
SECTION

# THE 62ND ANNUAL New Hampshire Antiques Show



DAVID A. SCHORSCH/EILEEN M. SMILES, Woodbury, Conn. — Rare architectural pendant with pierced hearts, Newbury, Mass., circa 1675, oak with a fine old finish, height 16 1/4 inches.



STEVEN F. STILL ANTIQUES, Mannheim, Penn. — Silverplated presentation fire trumpet inscribed "Ball and Reception of Wide Awake Engine Company" and "Won by Ever Ready Hose Co No 1 on March 16, 1910." It is 18 1/2 inches tall.

The 62nd Annual  
New Hampshire Antiques Show  
August 8 - 10, 2019

BOB JESSEN & JIM HOHNWALD, Fitzwilliam, N.H. — Two New England early wooden dasher butter churns, one red over green paint, the other in original blue paint.



RESSER-THORNER ANTIQUES, Manchester, N.H. — "King Lewis and Wife and Son Going to Execution," Sally Hodgdon (1780-1855), 8 by 10 inches sight; see *By Good Hands*, plates 84-86.



JUDITH & JAMES MILNE, Kingston, N.Y. — Rare bumblebee weathervane as referenced in *Animals in Folk Art*.

## Withington & Company

207 Market Street  
Portsmouth, NH 03801  
603-498-4778



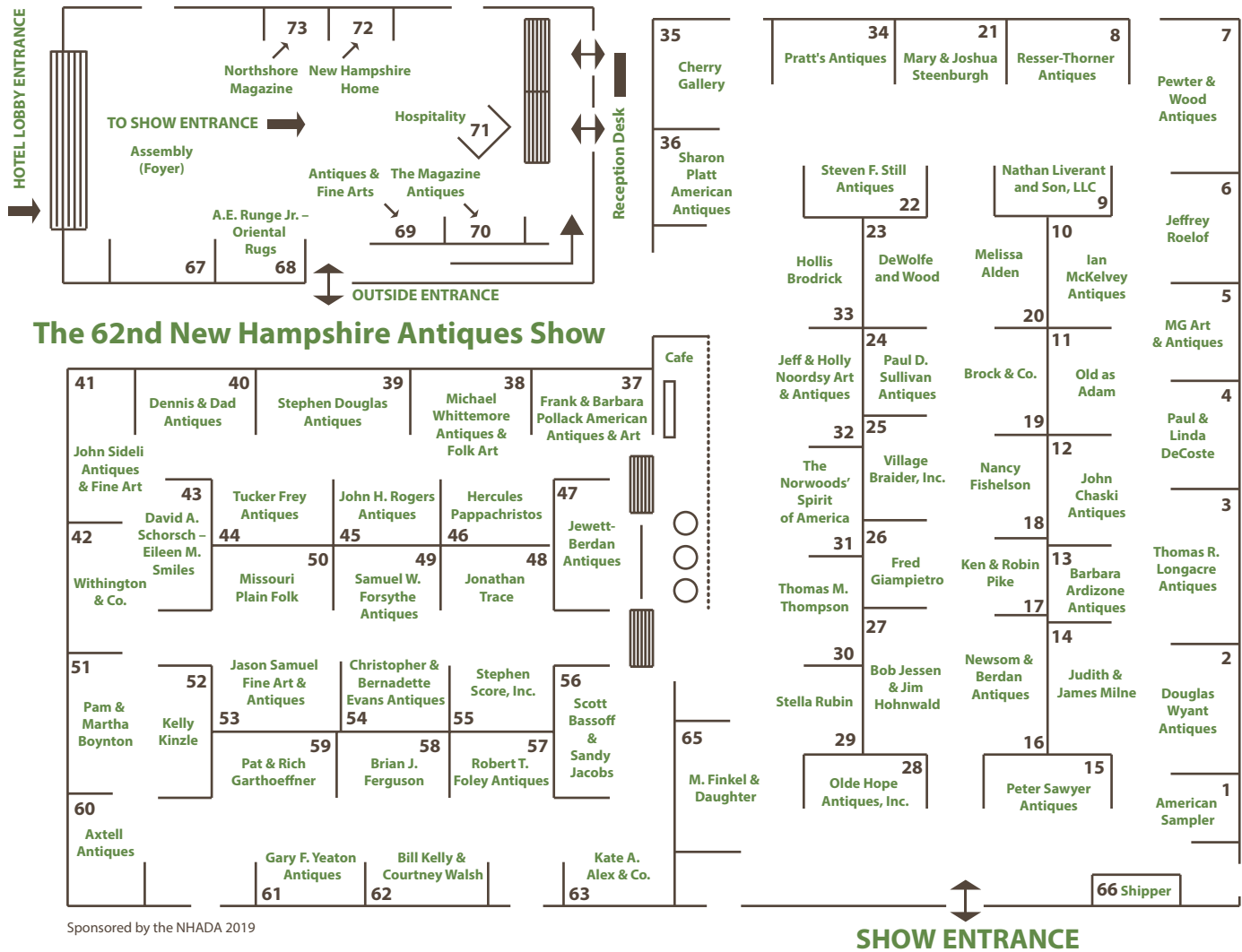




# THE 62ND ANNUAL New Hampshire Antiques Show

SPECIAL  
SHOW  
SECTION

## 2019 NHADA EXHIBITOR LIST



Sponsored by the NHADA 2019

- |   |          |  |          |
|---|----------|--|----------|
| Melissa Alden, Portsmouth, NH                           | Booth 20 | Missouri Plain Folk, Sikeston, MO  | Booth 50 |
| Kate A. Alex & Co., Warner, NH                          | Booth 63 | Newsom & Berdan Antiques, Thomasville, PA  | Booth 16 |
| American Sampler, Boyds, MD                             | Booth 1  | Jeff & Holly Noordsy Art and Antiques, Cornwall, VT                              | Booth 32 |
| Barbara Ardizzone Antiques, Salisbury, CT               | Booth 13 | The Norwoods' Spirit of America, Timonium, MD                                    | Booth 31 |
| Axtell Antiques, Deposit, NY                            | Booth 60 | Old as Adam, Portsmouth, NH  | Booth 11 |
| Pam & Martha Boynton, Groton, MA                        | Booth 51 | Olde Hope Antiques, Inc., New Hope, PA   | Booth 28 |
| Brock & Co., Concord, MA                                | Booth 19 | Hercules Pappachristos, Derry, NH  | Booth 46 |
| Hollis Brodrick, Portsmouth, NH                         | Booth 33 | Pewter & Wood Antiques, Enfield, NH  | Booth 7  |
| John Chaski Antiques, Camden, DE                        | Booth 12 | Ken & Robin Pike, Nashua, NH   | Booth 17 |
| Cherry Gallery, Damariscotta, ME                        | Booth 35 | Sharon Platt American Antiques, New Castle, NH                                   | Booth 36 |
| Paul & Linda DeCoste, West Newbury, MA                  | Booth 4  | Frank & Barbara Pollack American Antiques & Art, Sunapee, NH / Highland Park, IL | Booth 37 |
| Dennis & Dad Antiques, Fitzwilliam, NH                  | Booth 40 | Pratt's Antiques, Victor, NY   | Booth 34 |
| DeWolfe and Wood, Alfred, ME                            | Booth 23 | Resser-Thorner Antiques, Manchester, NH  | Booth 8  |
| Christopher & Bernadette Evans Antiques, Waynesboro, VA | Booth 54 | Jeffrey Roelof, Kalamazoo, MI  | Booth 6  |
| Brian J. Ferguson, Swansea, MA                          | Booth 58 | John H. Rogers Antiques, New London, NH  | Booth 45 |
| M. Finkel & Daughter, Philadelphia, PA                  | Booth 65 | Stella Rubin, Darnestown, MD   | Booth 29 |
| Nancy Fishelson, Woodbury, CT                           | Booth 18 | A. E. Runge Jr. -- Oriental Rugs, Yarmouth, ME                                   | Booth 68 |
| Robert T. Foley Antiques, Gray, ME                      | Booth 57 | Peter Sawyer Antiques, Exeter, NH  | Booth 15 |
| Samuel W. Forsythe Antiques, Columbus, OH               | Booth 49 | David A. Schorsch - Eileen M. Smiles, Woodbury, CT                               | Booth 43 |
| Tucker Frey Antiques, Woodbury, CT                      | Booth 44 | Stephen Score, Inc., Boston, MA  | Booth 55 |
| Pat & Rich Garthoeffner, Lititz, PA                     | Booth 59 | John Sidel Antiques & Fine Art, Westport, MA                                     | Booth 41 |
| Fred Giampietro, New Haven, CT                          | Booth 26 | Mary & Joshua Steenburgh, Pike, NH   | Booth 21 |
| Scott Bassoff and Sandy Jacobs, Swampscott, MA          | Booth 56 | Stephen Douglas Antiques, Rockingham, VT / Walpole, NH                           | Booth 39 |
| Jason Samuel Fine Art & Antiques, Milford, NH           | Booth 53 | Steven F. Still Antiques, Manheim, PA  | Booth 22 |
| Bob Jessen & Jim Hohnwald, Fitzwilliam, NH              | Booth 27 | Paul D. Sullivan Antiques, Manchester, NH  | Booth 24 |
| Jewett-Berdan Antiques, Newcastle, ME                   | Booth 47 | Thomas M. Thompson, Pembroke, NH   | Booth 30 |
| Bill Kelly & Courtney Walsh, Limington, ME              | Booth 62 | Jonathan Trace, Portsmouth, NH   | Booth 48 |
| Kelly Kinzle, New Oxford, PA                            | Booth 52 | Village Braider, Inc., Plymouth, MA  | Booth 25 |
| Nathan Liverant and Son, LLC, Colchester, CT            | Booth 9  | Michael Whittemore Antiques & Folk Art, Punta Gorda, FL                          | Booth 38 |
| Thomas R. Longacre Antiques, Marlborough, NH            | Booth 3  | Withington & Co., Portsmouth, NH   | Booth 42 |
| Ian McKelvey Antiques, So Windham, CT                   | Booth 10 | Douglas Wyant Antiques, LLC, Cassopolis, MI                                      | Booth 2  |
| MG Art & Antiques, Merrimac, MA                         | Booth 5  | Gary F. Yeaton Antiques, Concord, NH   | Booth 61 |
| Judith & James Milne, Kingston, NY                      | Booth 14 |  |          |



@nhantiquesdealers  
#nhdealersshow

nhada.org

