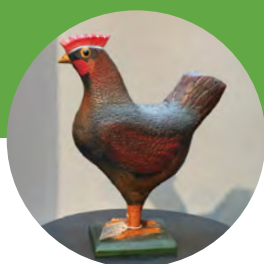


Special Show Section

# CONNECTICUT SPRING ANTIQUES SHOW

## THE CONNECTICUT SPRING SHOW



## *Arts and Objects Through the Ages* March 23-24, 2019



The Hartford Armory, 360 Broad Street, Hartford, CT

### Participating Dealers

#### Connecticut

Martin Chasin Fine Arts LLC  
The Cooley Gallery  
Roberto Freitas  
The Hanebergs Antiques  
Hanes and Ruskin  
Stephen and Carol Huber  
Nathan Liverant and Son Antiques  
Mad River Antiques  
Oriental Rugs Ltd.  
Derik Pulito Antiques  
Jeffrey Tillou Antiques  
Warren Antiques  
Paul and Karen Wendhiser  
**Massachusetts**  
Scott Bassoff & Sandy Jacobs  
Blue Heron Fine Arts  
Garvey Rita Art and Antiques

Samuel Herrup  
Donna Kmetz  
Leatherwood Antiques  
Paulette and Hilary Nolan  
Grace and Elliott Snyder  
Village Braider  
**Maine**  
Peter H. Eaton Antiques Inc.  
Gleason Fine Art  
Jewett and Berdan  
Dennis Raleigh/Phyllis Sommer  
W.M. Schwind, Jr.  
**Michigan**  
Bette & Melvyn Wolf  
**New Hampshire**  
Mark and Marjorie Allen  
Hollis Brodrick  
John Rogers LLC

#### New Jersey

Randi Ona  
RGL Antiques  
**New York**  
Artemis Gallery  
Axtell Antiques  
Daniel and Karen Olson

#### Ohio

David Good Antiques  
Jane Langol

#### Pennsylvania

Britannia House

#### Vermont

Stephen-Douglas Antiques

#### Virginia

Thistlethwaite Americana

- ◆ Showcasing the Best Dealers in the Country
- ◆ Educational talks
- ◆ Free on-site parking
- ◆ Admission \$15
- ◆ Collectors 35 and younger admitted free on Sunday

Saturday 10 AM - 5 PM ◆ Sunday 11 AM - 4 PM

ctspringshow.com ◆ 860-345-2400

Presented by The Haddam Historical Society

Managed by Karen L. DiSaia



Our Media Sponsors:

Antiques & Fine Art  
MAGAZINE

New England  
HOME  
CONNECTICUT

AMERICAN  
FINEART  
MAGAZINE

The Magazine  
ANTIQUES



CONNECTICUT SPRING ANTIQUES SHOW

Special Show Section



JEWETT-BERDAN ANTIQUES, Newcastle, Maine — Folky silhouette with ink details, circa 1825.

ctspringshow.com



NATHAN LIVERANT AND SON, LLC, Colchester, Conn. — “Illustrative Model” of a hay rake with fitted pine box with a leather handle. The box features an applied pen and ink on paper label that reads: “Alzirus Brown vs J.R. Whittemore et als” for Alzirus Brown (1821-1898) of Concord and Worcester, Mass., 1865–75.



PETER H. EATON, Wiscasset, Maine — An unusual high-backed Windsor rocker in as descended condition. Ash, maple and pine in Nineteenth Century green paint with coach-painted decoration in gold and black. This chair was originally made as a rocker and is pictured and discussed on page 61 of Nancy Evans’s *American Windsor Furniture Specialized Forms*. It is of Rhode Island origin, 1795–1805, and measures 44½ inches high, with a 17½-inch seat height.

March 23-24, 2019



ELLIOT & GRACE SNYDER, South Egremont, Mass. — A selection of Fifteenth and Sixteenth Century brass candlesticks, all in outstanding condition.



SAMUEL HERRUP ANTIQUES, Sheffield, Mass. — Fine redware pitcher attributed to William Pecker, circa 1810, Merrimacport, Mass., height 7¼ inches.



Elliott & Grace Snyder

413-528-3581 (T)  
413-441-4065 (C)

info@elliottandgracesnyder.com  
www.elliottandgracesnyder.com

FINE CONNECTICUT  
CHIPPENDALE  
CHEST OF DRAWERS

A lovely cherry serpentine chest of drawers with beautiful proportions. This chest features dynamic ogee feet, an unusually large molded overhang, original brasses, and rare inlay simulating a blocked facade; all in an unusually small size. New London County, possibly shop of Felix Huntington, c. 1780.

A similar chest displaying the identical vertical inlay on the drawer fronts, and recorded as Norwich, is featured as plate #50 in *New London County Furniture, 1640-1840*, Lyman Allyn Museum, 1974. The dovetails exhibit the same profile as other New London County chests, and the original brasses are identical to the brasses on the documented Felix Huntington desk in *New London County Furniture*, pl. 58.



## 46th Connecticut Spring Show Arts And Objects Through The Ages

HARTFORD, CONN. — The 46th Annual Connecticut Spring Show — Arts and Objects Through the Ages, will be held March 23–24, at the Hartford Armory, 360 Broad Street, in the historic heart of the state's capital. The event will showcase an assortment of antiques, along with fine and decorative arts offered by some of the most exceptional antiques and art dealers in the United States. In order to stay relevant in today's changing market, the show will offer a more diverse selection of goods while staying loyal to its early American roots.

The show will present a millennials' view to the world of antiques and arts. Kate Avery, artist, furniture designer, painter, blogger and influencer, is on tap to share her knowledge and design expertise on Saturday, March 23, at 2 pm, with her talk "Fresh Design with Antiques."

On Sunday, March 24, from 1 to 4 pm, Kate and Emily Brandenburg, collector, web-designer and social media consultant, will share their design savvy and love of antiques and art at the design room they have created. The design space they have fashioned will show how a millennial can decorate with antiques and art in a Twenty-First Century livable space.

The proceeds of the Connecticut Antiques Show will support the Haddam Historical Society's programs, community outreach, collections and preservation and maintenance of the Thankful Arnold House Museum. For information, [www.haddamhistory.org](http://www.haddamhistory.org). For show information, [www.ctspringantiquesshow.com](http://www.ctspringantiquesshow.com) or 860-345-2400.



Kate Avery



Emily Brandenburg

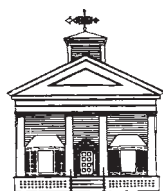
## NATHAN LIVERANT AND SON LLC ANTIQUES



### Queen Anne Mahogany Lowboy

featuring a top with notched front corners,  
a scrolled apron with a central pendant  
drop and four tall cabriole legs ending  
in slipper feet.

Newport, Rhode Island, 1760 - 1785.



168 SOUTH MAIN STREET, P.O. BOX 103, COLCHESTER, CT 06415

(860) 537-2409 • FAX (860) 537-0577

Visit us at: [www.liverantantiques.com](http://www.liverantantiques.com) and follow us at: [www.facebook.com/NLS.antiques](https://www.facebook.com/NLS.antiques)





# CONNECTICUT SPRING ANTIQUES SHOW

Special Show Section



GARVEY RITA ART & ANTIQUES, Orleans, Mass. — American Nineteenth Century “House on the Hill.”



LEATHERWOOD ANTIQUES, Sandwich, Mass. — “Old Faithful” is the translation on the banner of this carved and painted Nova Scotia plaque, circa 1910, measuring 12¾ inches high by 9¾ inches wide. For more photos, [www.leatherwoodantiques.com](http://www.leatherwoodantiques.com) — Folk Art & Painted Objects



NATHAN LIVERANT AND SON, LLC, Colchester, Conn. — Queen Anne maple mushroom armchair, featuring a serpentine crest, a vase-shaped splat and bulbous mushroom turned hand holds, New London County, Conn., 1745–70.

## CONNECTICUT SPRING ANTIQUES SHOW

March 23-24, 2019

The Hartford Armory  
360 Broad Street, Hartford, CT



DANIEL AND KAREN OLSON, Newburgh, N.Y. — A three-tier wall basket, American, original paint-stain decoration, height 18 inches.



THE HANEBERGS ANTIQUES, East Lyme, Conn. — A nice collection of boxes and tea caddies.

## MARK & MARJORIE ALLEN

*Furniture & Accessories of the 17th, 18th & early 19th centuries*



A fine pair English brass swirl based candlesticks with working twist ejectors



A Connecticut chest on chest, probably Loomis family



A Queen Anne Bristol blue dash charger

36 Endicott Street E, Unit 13/14, Laconia, NH 03246 • 603-644-8989

[www.antiquedelft.com](http://www.antiquedelft.com) • e-mail: [mandmallen@antiquedelft.com](mailto:mandmallen@antiquedelft.com)



Special Show Section

# CONNECTICUT SPRING ANTIQUES SHOW



A COUNTRY QUEEN  
ANNE HIGH CHEST  
with applied top molding,  
mid-moldings on both  
top and lower cases, an  
exceptionally well-cut  
skirt, and with cabriole  
legs ending in ball and  
claw feet. Made of  
maple, with poplar and  
chestnut secondary wood,  
probably in eastern CT or  
western RI, c.1760-70.  
Exceptional condition,  
retaining its original  
brasses and a dry old  
color. Top case 35 1/8",  
lower case 38 1/4", 72" ht.

PETER H. EATON  
AMERICAN FURNITURE



8 FEDERAL ST. WISCASSET, ME 04578 • (207) 687-8512 • PETER@PETEREATON.COM • WWW.PETEREATON.COM



# CONNECTICUT SPRING ANTIQUES SHOW

Special Show Section



ELLIOT & GRACE SNYDER, South Egremont, Mass. — A selection of rare early hourglasses.

DANIEL AND KAREN OLSON, Newburgh, N.Y. — Early American burl bowl made of black ash, large size, 21¼-inch diameter, 8¾ inches tall.



JEWETT-BERDAN ANTIQUES, Newcastle, Maine — Stuffed velvet theorem in a painted mica compote displayed in a period gold shadow box.



ROBERTO FREITAS, American Antiques & Decorative Arts, Stonington, Conn. — Federal string inlaid mahogany sofa, Massachusetts, circa 1790-1800.



SCOTT BASSOFF / SANDY JACOBS ANTIQUES, Swampscott, Mass. — A miniature stoneware keg with blue decoration spelling "Lizzie" and a mocha mug with cat's-eye decoration on top of a miniature red-painted New England chest.



THE HANEBERGS ANTIQUES, East Lyme, Conn. — Detail of an oval Pembroke table, the mate to one at Winterthur.

## Bette & Melvyn Wolf, inc.

1196 SHADY HILL COURT,  
FLINT, MICHIGAN 48532

*18th & 19th C Pewter & Accessories*



Fine 18th Century Albany, NY Quart Tankard  
by Peter Young, C. 1782-1800

Tel. 810-732-6595 • Fax: 810-732-1467  
E-mail: [b.m.wolf@att.net](mailto:b.m.wolf@att.net)  
[www.wolfpewter.com](http://www.wolfpewter.com)

## STEPHEN DOUGLAS

*Offering 17th, 18th and 19th century American Antiques*



Pastel portrait of Susan Alden, Randolph, MA, 6th generation descendant of John and Priscilla Alden (Mayflower) - by Sarah Perkins, Beardsley Limner (Connecticut, 1771 - 1830).

Call 802-463-4296 For An Appointment  
Rockingham, Vermont  
Walpole, New Hampshire



Special Show Section

# CONNECTICUT SPRING ANTIQUES SHOW



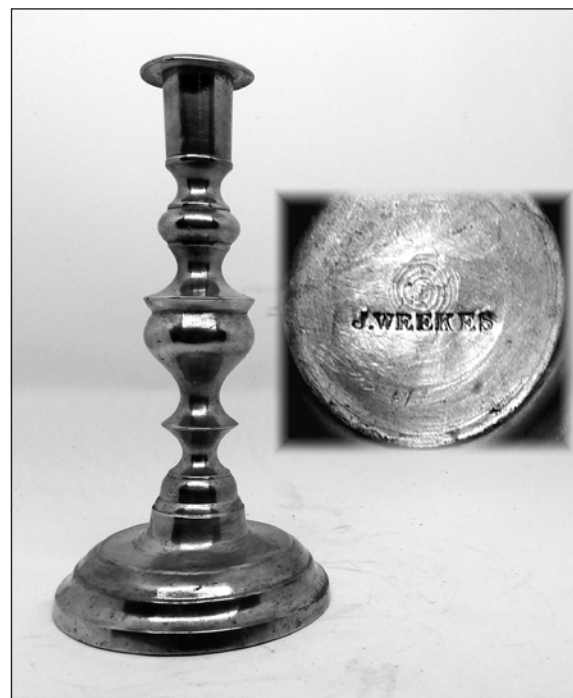
AXTELL ANTIQUES, Deposit, N.Y. — Hand carved from maple burl, this porringer/belt cup measures 5 inches long, with a 3-inch diameter.



PETER H. EATON, Wiscasset, Maine — A rare Queen Anne server — one of only three that I have seen in more than 40 years — with an applied molded-edge top, three rows of drawers over a scalloped skirt and resting on tall, graceful cabriole legs ending in pad feet. The shape of the leg, with no knee returns, and the scrolled apron, indicate an Eastern Connecticut origin, circa 1750–70. It is made of cherry, with birch legs and with pine secondary wood and measurements are case width, 34½ inches; height, 40 inches; and depth, 18½ inches.



SAMUEL HERRUP ANTIQUES, Sheffield, Mass. — Eighteenth Century Dutch tin glaze drug jars — a single and a pair.



BETTE & MELVYN WOLF, INC, Flint, Mich. — A 7½-inch Weekes candlestick, Poughkeepsie, N.Y., circa 1840.

VILLAGE BRAIDER, Plymouth, Mass. — Cast stone polar bear, original paint, 21 inches long, Twentieth Century.

## Bristol County Redware



Two fine examples of redware from Bristol County, Massachusetts, circa 1790 - 1810. The ovoid jar with outstanding glaze and manganese drips is 8" tall. The bulbous jug in mottled green glaze is 6" tall. Excellent condition.

## Lamont Portrait



Fine portrait of a woman holding a fan, oil on canvas, New England, attributed to Daniel G. Lamont (1818-1883), circa 1850. A late Federal house with pillars can be seen. The carved cameo denotes her status. Mounted on original poplar stretcher. Period frame. 27½" x 21½".

# SAMUEL HERRUP ANTIQUES

116 Main Street, P.O. Box 248, Sheffield, MA 01257

(413)229-0424 c: (413)822-1471 • E-mail: herrup@verizon.net • Web: [www.samuelherrup.com](http://www.samuelherrup.com)





# CONNECTICUT SPRING ANTIQUES SHOW

Special Show Section



**LEATHERWOOD ANTIQUES**, Sandwich, Mass. — Majestic spread-winged “Wise Owl” hovering over an open book flanked by two faux book piles with inkwells in this desk set, Swiss, circa 1900, measuring 7 inches high by 11¼ inches long by 5¼ inches deep. For more photos, [www.leatherwoodantiques.com](http://www.leatherwoodantiques.com) — Black Forest Carvings ~ Owls, Foxes, Etc.



**DERIK PULITO**, Kensington, Conn. — A 36-hole candle mold.



**VILLAGE BRAIDER**, Plymouth, Mass. — A Twentieth Century 24-inch-tall carved granite head, Ted Ludwiczak, Haverstraw N.Y.



**LEATHERWOOD ANTIQUES**, Sandwich, Mass. — Whimsical midcentury painted iron doorstop depicting three yellow/orange cats, American, measuring 6¾ inches high by 7½ inches wide by 2¾ inches deep. For more photos, [www.leatherwoodantiques.com](http://www.leatherwoodantiques.com) — Architectural, Garden & Door Stop Objects



**BETTE & MELVYN WOLF, INC**, Flint, Mich. — Early Nineteenth Century American copper measures — a half gallon and a quart.

STEPHEN & CAROL  
**HUBER**  
*America's Preeminent Source for Girlhood Embroideries*



**MOSES IN THE BULRUSHES and PHARAOH'S DAUGHTER**  
Misses Pattens' School, Hartford, CT c.1810  
Silk, metallic thread, paint, sequins on silk; framed size 19 5/8" x 16 1/4".

[www.AntiqueSamplers.com](http://www.AntiqueSamplers.com)

Forty Ferry Road, Old Saybrook, Connecticut 06475  
TEL 860.388.6809 • [Hubers@AntiqueSamplers.com](mailto:Hubers@AntiqueSamplers.com)

Village Braider Inc.

Plymouth, Mass.  
508-746-9625



Oil on canvas landscape by  
Alex Loeb  
Mississippi artist,  
36" x 49", dated 57.





Special Show Section

# CONNECTICUT SPRING ANTIQUES SHOW

**PETER H. EATON**, Wiscasset, Maine — A very bold and gutsy Windsor candlestand with chamfered top, bulbous-shaped post and turned legs. Cherry throughout — in great old red paint and in great “as descended” surface. The top is 16¾ by 17 inches, height, 28 inches. It is probably from Pennsylvania, third quarter Eighteenth Century. The surface of the post is bubbled along one side, probably from sitting too close to the fire.



**BETTE & MELVYN WOLF, INC**, Flint, Mich. — Assorted group of signed Roswell Gleason fluid lamps, Dorchester, Mass., circa 1840.



American Painted Game Board

**Garvey Rita**  
Art & Antiques

6 Lewis Road, Orleans, MA 02653  
www.garveyrita.com | info@garveyrita.com | 860-983-6563

## Jewett-Berdan



Paint Decorated, Slide Lid,  
Book Shaped Box  
By George Robert Lawton, Jr.  
(1839-1883) Wisconsin

The slide lid is decorated with an eagle perched on a vase of flowers with the verse “When this you see / Remember Me / M C Lawton”. The binding of the book is decorated “Sabath School Library / G R Lawton / M R C Lawton / Wisconsin / April AD 1879. The initials M R C refer to Matilda Rosinda Cynthia Lawton (1863 - 1940), daughter of George Robert Lawton, Jr. This box belongs to an important group of boxes attributed to Lawton and identified in *Expressions of Innocence and Eloquence*.

**Thomas J. Jewett**  
**Charles P. Berdan**

15 Hopkins Hill Road  
Newcastle, Maine 04553

(207) 563-3682

jewett-berdan@roadrunner.com





# CONNECTICUT SPRING ANTIQUES SHOW

Special Show Section



SAMUEL HERRUP ANTIQUES, Sheffield, Mass. — An unusual lighthouse whirligig in painted tin, early Twentieth Century, 11 inches high by 14½ inches long.



SCOTT BASSOFF / SANDY JACOBS ANTIQUES, Swampscott, Mass. — Victorian 14K gold snake pin with pearls, watch hook hidden on back.



STEPHEN & CAROL HUBER, Old Saybrook, Conn. — This needlework Fitch / Hall coat of arms, work coat of arms was most likely worked by one of the daughters of Governor Thomas Fitch of Connecticut and his wife Hannah Hall at the Misses Cuming school in Boston, circa 1770. It was discovered by Captain Nicholas Johnson, of Newburyport, in the captain's cabin of a deserted ship off the coast of New England, circa 1773, and descended to his great-granddaughter Margaret W. Cushing who owned it circa 1920 when it was photographed and included in Bolton & Coe. It was next documented in a 1937 Boston needlework exhibition, as pictured in *Girlhood Embroidery* by Betty Ring. It was rediscovered by the Hubers in 1999. It is of silk, metallic thread and beads on black silk; 19½ by 19½ inches square sight. —www.antiquesamplers.com



GARVEY RITA ART & ANTIQUES, Orleans, Mass. — American Nineteenth Century sewer tile figure of a lion



DERIK PULITO, Kensington, Conn. — Glazed door corner cupboard.

## Scott Bassoff Sandy Jacobs ANTIQUES

Diminutive tapered  
leg desk  
in original red paint.  
New England,  
23" wide by  
23" deep by 43" tall.



Swampscott, MA 01907 | cell 603.801.5532  
www.sandyjacobsantiques.com | sandyjnh1@gmail.com  
www.scottbassoffssandyjacobsantiques.com



7 drawer tall chest in Tiger maple, eagle weathervane att. to Harris and a pair of Chinese export Blue and White tea canisters.

## The Haneberg's *Antiques*

Bob and Claudia Haneberg • By Appointment only  
(860) 389-1908 • chaneberg@aol.com  
www.HanebergsAntiques.com

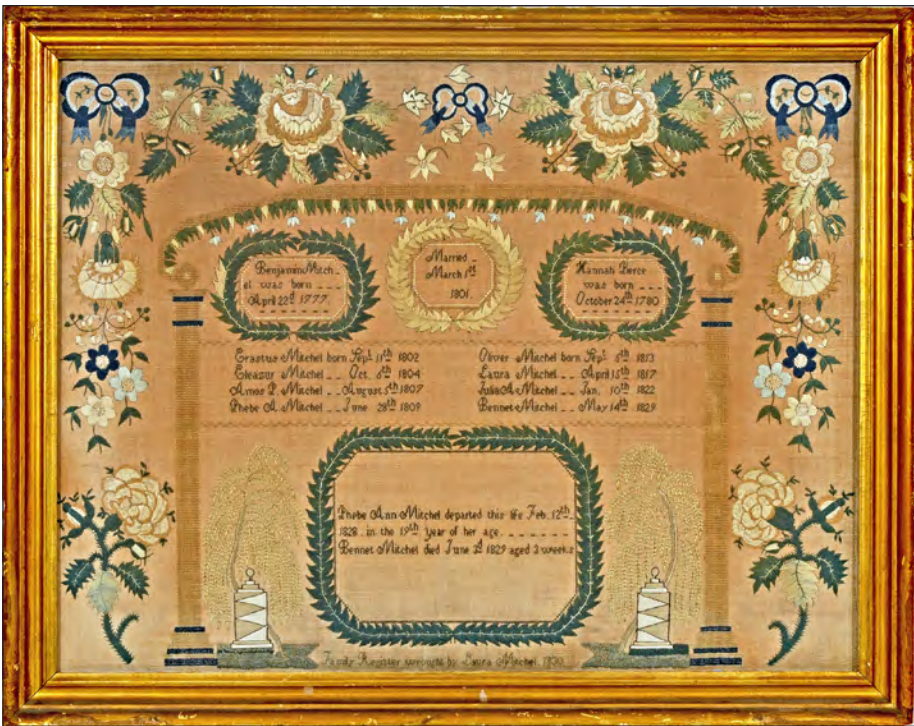


Special Show Section

# CONNECTICUT SPRING ANTIQUES SHOW



VILLAGE BRAIDER, Plymouth, Mass. — Twentieth Century bronze carp, 23 inches long.



JEWETT-BERDAN ANTIQUES, Newcastle, Maine — House hooked rug with floral border, circa 1930.

STEPHEN & CAROL HUBER, Old Saybrook, Conn. — Laura Mitchel, at age 13, in 1830, worked this striking Family Register needlework sampler at Miss Cornwall's school in Glastonbury, Conn. She recorded the births and marriage of her parents and the births and deaths of her siblings. At age 13, she was no doubt boarding in Glastonbury while attending school because her family lived 50 miles away in South Britain. Silk on linen, it measures 20 by 26 inches framed. Attached to the back is a page from the *New Haven City Gazette* dated April 22, 1830. — [www.antiquesamplers.com](http://www.antiquesamplers.com)



ELLIOT & GRACE SNYDER, South Egremont, Mass. — Rare pair of samplers done by two sisters — Betsey and Nancy Adams — New England, probably Massachusetts, 1818.



Ralph & Karen DiSaia  
**ORIENTAL RUGS**

Connecticut's Trusted Resource  
for Distinctive Antique Carpets

**Oriental Rugs Ltd.**

Niantic, CT  
[orientalrugs@snet.net](mailto:orientalrugs@snet.net)  
860-908-0076  
open by appointment

[www.orientalrugsltd.com](http://www.orientalrugsltd.com)



## Bee Skep Butter Stamp

Hand carved maple butter stamp of Pennsylvania origin. It shows a bee hive and bees along with flowers and vines. ca. 1840. Diameter 3½".



**Axtell Antiques**  
[www.therookerybookery.com](http://www.therookerybookery.com)

FOLK ART • BASKETS & STONEWARE

the Rookery 1799  
AXTELL ANTIQUES

Axtell Antiques

• EARLY AMERICANA •  
RICHARD S. AXTELL

1 River Street, Deposit, NY 13754  
Now open by appointment • 607-467-4444  
email: [jamesfic2@tds.net](mailto:jamesfic2@tds.net)

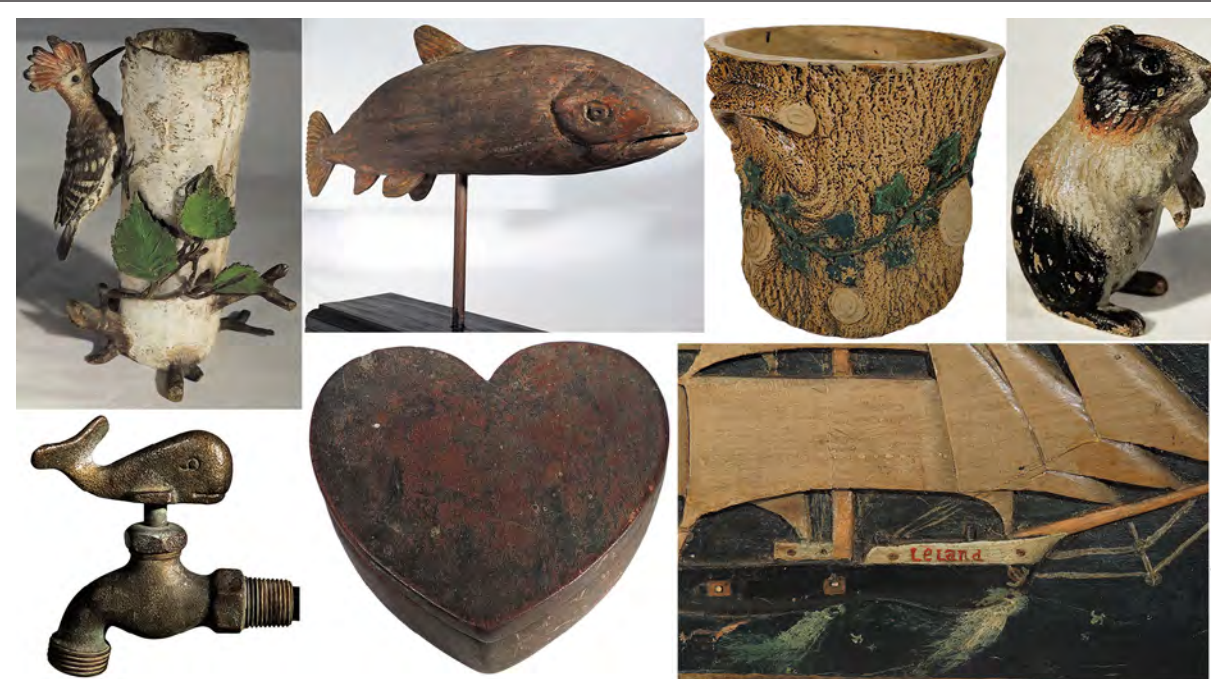
• REDWARE • EARLY LIGHTING

• HEARTH ACCESSORIES • AMERICAN COUNTRY FURNITURE • TREENWARE



CONNECTICUT SPRING ANTIQUES SHOW

Special Show Section



*Leatherwood Antiques-*

508-420-1433

[www.leatherwoodantiques.com](http://www.leatherwoodantiques.com)



MAD RIVER ANTIQUES, LLC, North Granby, Conn. — A circa 1920s painting of the clipper ship *Dreadnought*. It was painted by American artist Robert Edmund Lee for the Canadian Pacific Company.



GARVEY RITA ART & ANTIQUES, Orleans, Mass. — American Nineteenth Century graphite on paper.



PETER H. EATON, Wiscasset, Maine — A great country Queen Anne armchair in old dark red paint over original red, with unusual, beautifully turned arms, broad, shaped splat, full height (48 inches), from Southwestern Connecticut, circa 1745–70. When sold in 2008, it had the attached note: “Great chair purchased by Mrs Deming from Merrill Carr, Somers, CT, 1947, pd. \$26.00.”



ELLIOT & GRACE SNYDER, South Egremont, Mass. — Extremely rare Eighteenth Century New England hanging cupboard with original cutout for watch, in original red paint.

[ctspringshow.com](http://ctspringshow.com)



Carved Butter Print, Tulip with 13 stars - Sold

Always interested in purchasing individual prints or collections of this quality.

John H. Rogers  
ANTIQUES  
CAFS, LLC

P. O. Box 234, Elkins, New Hampshire 03233  
603-526-6778



Mad River  
Antiques, LLC



Two excellent examples of the floral-decorated stoneware produced at the pottery of J. Norton & Co. in Bennington, VT between 1859 and 1861.

Steve and Lorraine German  
North Granby, CT 06060

Phone: (860) 653-5733  
E-mail: [madrivanantiques@aol.com](mailto:madrivanantiques@aol.com)  
Web: [www.madrivanantiques.com](http://www.madrivanantiques.com)



Special Show Section

# CONNECTICUT SPRING ANTIQUES SHOW



THE HANEBERGS ANTIQUES, East Lyme, Conn. — A rooster weathervane with great surface.



NATHAN LIVERANT AND SON, LLC, Colchester, Conn. — Queen Anne maple oval top drop leaf dining table with straight turned legs ending on pad feet, Rhode Island, possibly Newport School, 1760–80.



NATHAN LIVERANT AND SON, LLC, Colchester, Conn. — Federal silk on silk needlework depicting a scene of Moses in the Bulrushes with the Pharaoh's daughters, featuring a silver thread eagle, garland of flowers and gold thread sheaf of wheat. Attributed to the Misses Patens' School, Hartford, Conn., 1790–1815.

March 23-24, 2019  
The Hartford Armory  
360 Broad Street, Hartford, CT

DERIK PULITO, Kensington, Conn. — With six heart cutouts.



ROBERTO FREITAS, American Antiques & Decorative Arts, Stonington, Conn. — Folk portrait of two children, oil on board, 37¼ by 46½ inches, framed, American, circa 1835.



Ca. 1860s, square nailed, wonderfully created double shelf in original, crisp black and red graining. In excellent condition and prominently sized: 32½" by 20½". No breaks or repairs.

## Derik Pulito

18th & 19th Century Country Americana



KENSINGTON, CT  
(860) 828-0588  
By Appointment Only

## Daniel and Karen Olson

Dealing in authentic antiques for over 35 years  
1445 Route 300, Newburgh, New York 12550

Home Phone: (845) 564-0572

Cell Phone: (914) 474-1736

E-mail: [olsonantiques@earthlink.net](mailto:olsonantiques@earthlink.net)



Early 19th c. Fly Creek, NY  
original paint-decorated tin document box,  
9½" wide, 7¼" tall



CONNECTICUT SPRING ANTIQUES SHOW

Special Show Section

Connecticut Spring Antiques Show

March 23 & 24, 2019

DEALER LISTING

Mark and Marjorie Allen

PO Box 5013  
Weir Beach, NH 03247  
603-644-8989  
mandmallen@antiquedelft.com  
www.antiquedelft.com

Axtell Antiques

1 River Street, Deposit, NY 13754  
607-467-4444  
rsaxtel@msn.com  
www.axtellantiques.com

Scott Bassoff & Sandy Jacobs

99 Rockland Street  
Swampscott, MA 01907  
SandyJNh1@gmail.com  
www.sandyjacobsantiques.com

Blue Heron Fine Arts

31 Nichols Road  
Cohasset, MA 02025  
781-383-3210  
info@blueheronfa.com  
www.blueheronfa.com

Britannia House

220 Valley View Road  
Riegelsville, PA 18077  
PObox705@msn.com  
www.thebritanniahouse.com

Hollis Brodrick

PO Box 30  
Portsmouth, NH 03802  
603-828-6158

Joan Brownstein

PO Box 407/8 Federal Street  
Wiscasset, ME 04578  
Joan@americanfolkpaintings.com  
www.americanfolkpaintings.com

Martin Chasin Fine Arts LLC

1125 Church Hill Road  
Fairfield, CT 06825  
203-374-5987  
m2015chasin@gmail.com  
www.martinchasinfineartslc.com

The Cooley Gallery

25 Lyme Street, Old Lyme, CT 06371  
978-465-1090  
info@cooleygallery.com  
www.cooleygallery.com

Peter H. Eaton Antiques Inc.

PO Box 407/8 Federal Street  
Wiscasset, ME 04578  
978-465-2754  
Peter@PeterEaton.com  
www.PeterEaton.com

Roberto Freitas

156 Water Street  
Stonington, CT 06378  
860-535-1797  
Info@robertofreitas.com  
www.Robertofreitas.com

Garvey Rita Art and Antiques

6 Lewis Road  
Orleans, MA 02653  
860- 233-1730  
info@garveyrita.com  
www.garveyrita.com

Gleason Fine Art

PO Box 540  
Boothbay Harbor, ME 04538  
207-633-6849  
info@gleasonfineart.com  
www.gleasonfineart.com

David Good Antiques

7887 State Rtd. 177  
Camden, OH 45311  
513-796-2693

The Hanebergs Antiques

5 Boston Post Road  
East Lyme, CT 06333  
860-437-1583  
chaneberg@aol.com  
www.hanebergsantiques.com

Hanes and Ruskin

PO Box 212  
Old Lyme, CT 06371  
860-434-1800  
info@hanesandruskin.com  
www.hanesandruskin.com

Samuel Herrup

PO Box 248  
Sheffield, MA 01257  
413-229-0424  
herrup@verizon.net  
www.samuelherrup.com

Stephen and Carol Huber

40 Ferry Road  
Old Saybrook, CT 06475  
860-388-6809  
Hubers@AntiqueSamplers.com  
www.AntiqueSamplers.com

Jewett and Berdan

15 Hopkins Hill Road  
Newcastle, ME 04503  
207-563-3682  
jewett-berdan@roadrunner.com  
www.jewettberdan.com

Donna Kmetz

1 Common Street  
Douglas, MA 01516  
508-476-2214  
donnakmetz@charter.net  
www.donnakmetz.com

Jane Langol

5175 Rustic Hills Drive  
Medina, OH 44256  
330-725-5311  
Sumrein@zoominternet.net  
www.Janelangolantiques.com

Leatherwood Antiques

PO Box 1676  
Sandwich, MA 02563  
508-420-1433  
info@leatherwoodantiques.com  
www.leatherwoodantiques.com

Nathan Liverant and Son Antiques

168 South Main Street, PO Box 103  
Colchester, CT 06415  
860-537-2409  
mail@liverantantiques.com  
www.liverantantiques.com

Mad River Antiques

13 Gloucester Lane  
North Granby, CT 06060  
860-653-5733  
madriverrantiques@aol.com  
www.madriverrantiques.com

Paulette and Hilary Nolan

PO Box 583  
Falmouth, MA 02541  
508-548-0127  
hpnolan@mac.com

Daniel and Karen Olson

1445 Rt 300  
Newburgh, NY 12550  
845-564-0572  
olsonantiques@earthlink.net  
www.olsonantiques.com

Randi Ona

20 Osborne Terrace  
Wayne, NJ 07470  
973-495-3707  
onaantiques@optonline.net  
www.onaantiques.com

Oriental Rugs Ltd.

23 Lyme Street  
Old Lyme, CT 06371  
860-434-1167  
orientalrugs@snet.net  
www.orientalrugsltd.com

Derik Pulito Antiques

381 Percival Avenue  
Kensington, CT 06037  
860-828-0588  
ddp023@comcast.net

Dennis Raleigh/Phyllis Sommer

PO 243  
Searsport, ME 04974  
207 805 4564  
dgraleigh@myfairpoint.net  
www.dennisraleighantiques.com

RGL Antiques

18 Shy Creek Road  
Pittstown, NJ 08867  
908-930-5615  
rfranzese@rglantiques.com  
www.rglantiques.com

John Rogers LLC

31 Dixie Lane  
New London, NH 03257  
jhwthrow@yahoo.com

W.M. Schwind, Jr

51 East Main Street  
Yarmouth , ME 04096  
207-846-9458  
schwnd@gwi.net  
www.schwind-antiques.com

Grace and Elliott Snyder

Box 598  
S. Egremont, MA 01258  
413-528-3581  
zorvis@bcn.net  
www.elliottandgracesnyder.com

Stephen-Douglas Antiques

PO Box 27  
Rockingham, VT 05101  
802-463-4296  
doug.jackman1@me.com  
www.stevenfstillantiques

Thistlethwaite Americana

612 Duke Street  
Alexandria, VA 22314  
270-404-1558  
taylor@thistleamericana.com  
www.Thistleamericana.com

Jeffrey Tillou Antiques

39 West Street  
Litchfield, CT 06759  
860-567-9693  
Jeffrey@Tillouantiques.com  
www.tillouantiques.com

Village Braider

22 Fathom Road  
Plymouth, MA 02360  
508-746-9625  
Bruce@villagebraider.com  
www.villagebraider.com

Warren Antiques

150 Main Street  
Monroe, CT 06368  
203-984-6174  
aj@warenantiques.com  
www.warrenantiques.com

Paul and Karen Wendhiser

PO Box 155  
Ellington, CT 06029  
860-872-9600  
pkwendhiser@comcast.net  
www.Wendheiserantiques.com

Bette & Melvyn Wolf

1196 Shady Hill CT  
Flint, MI 48532  
810-252-2726  
b.m.wolf@att.net  
www.wolfpewter.com



Special Show Section

# CONNECTICUT SPRING ANTIQUES SHOW



SCOTT BASSOFF / SANDY JACOBS ANTIQUES, Swampscott, Mass. — Lovely miniature painting by Samuel Howes of Lowell, Mass., found in Marblehead, Mass.



ROBERTO FREITAS, American Antiques & Decorative Arts, Stonington, Conn. — White painted wood swan decoy, Maryland, circa 1850.



STEPHEN & CAROL HUBER, Old Saybrook, Conn. — This graphically stunning black background canvaswork picture of a vase of flowers is typical of floral needlework pictures popular in mid-Eighteenth Century. Worked by young ladies attending academies, this example is likely from New England. It would have been brought home and proudly displayed by the makers' parents in the parlor or another formal room. It is wool and silk on linen canvas; 18½ by 16½ inches in the period frame. Probably American circa 1750. — [www.antiquesamplers.com](http://www.antiquesamplers.com)



DANIEL AND KAREN OLSON, Newburgh, N.Y. — A primitive landscape signed Redpath 1872, oil on canvas, 30 by 24 inches framed, Nineteenth Century, New York State.



March 23-24, 2019  
The Hartford Armory  
360 Broad Street, Hartford, CT

SAMUEL HERRUP ANTIQUES, Sheffield, Mass. — Excellent schoolgirl depiction of "Miss Liberty," watercolor on silk, with original eglomise mat, New England, circa 1810-20, measuring 24½ by 19¾ inches.

**Roberto Freitas**

American Antiques & Decorative Arts

QUEEN ANNE CHERRY LOWBOY  
Hartford County, Connecticut, 1750-60

Top: 36" W x 22¾" D  
Case: 28"W x 19" D; Height: 31"



156 Water Street • Stonington, CT 06378  
Call/Text: 860 535 1797 • [info@robertofreitas.com](mailto:info@robertofreitas.com)  
[WWW.ROBERTOFREITAS.COM](http://WWW.ROBERTOFREITAS.COM)



Unusual English Slipware Charger, 11.5 diameter, circa 1740



Pair of miniature water color portraits, late 18th century on paper

**David L. Good**  
**ANTIQUES**

7887 State Rt. 177, Camden, Ohio 45311  
Phone: (513) 796-2693 Cell: (937) 478-1378