

THE ADA/HISTORIC DEERFIELD ANTIQUES SHOW

SPECIAL SHOW SECTION

THE 2018 ADA/ HISTORIC DEERFIELD ANTIQUES SHOW

To Benefit The Connecticut Humane Society



at The Hartford Armory

360 Broad Street, Hartford, Connecticut 06105

OCTOBER 20-21

PREVIEW PARTY OCTOBER 19

For Tickets call 800 452-0114 or visit us at Cthumane.org



CONNECTICUT
Cooley Gallery
Kirtland H. Crump, LLC
Stephen & Carol Huber
Nathan Liverant and Son, LLC
Mad River Antiques, LLC
Oriental Rugs Ltd.
Derik Pulito
Thomas Schwenke, Inc
Jeffrey Tillou

NEW HAMPSHIRE
Hollis Brodrick
Resser-Thorner Antiques

VIRGINIA
Thistlethwaite Americana

OHIO
David Good
Kelly Gallery

MAINE
Gleason Fine Art
Jewett-Berdan Antiques

MASSACHUSETTS
Charles & Barbara Adams
Garvey Rita Art & Antiques
Scott Bassoff/Sandy Jacobs
Brock & Co.
Paul J. DeCoste
Colette Donovan
Samuel Herrup
David & Donna Kmetz
Langenbach's Art & Antiques
Hilary & Paulette Nolan
Quadrifoglio Gallery
Elliott & Grace Snyder
Andrew Spindler
Village Braider Antiques

DELAWARE
John Chaski

NEW YORK
Artemis Gallery
Richard Axtell
Bernard and S. Dean Levy
Daniel & Karen Olson
Steven S. Powers

NEW JERSEY
A Bird in Hand

VERMONT
Jeff & Holly Noordsy
Stephen-Douglas

MARYLAND
Lisa McAllister

FOR MORE DETAILS

ADADEALERS.COM



ANTIQUES DEALERS' ASSOCIATION OF AMERICA, INC. PO Box 218, NORTHWOOD, NH 03261 • 603-942-6498

THE ADA/HISTORIC DEERFIELD ANTIQUES SHOW

SPECIAL SHOW SECTION



BERNARD & S. DEAN LEVY, INC, New York City — Silk needlework and watercolor mourning picture of Hillity Williams (1745-1794), Albany, N.Y., circa 1795.



RESSER-THORNER ANTIQUES, Manchester, N.H. — Two Eighteenth Century Liverpool enamel wall plaques of Lord Cornwallis and Admiral Rodney, 2 3/4 by 2 inches.



MARIA AND PETER WARREN ANTIQUES, Monroe, Conn. — An English creamware sauce boat in the form of a duck, circa 1780-90.



THE COOLEY GALLERY, Old Lyme, Conn. — "Morning Light," Charles H. Davis, oil on canvas, 20 by 30 inches.



JEWETT-BERDAN, Newcastle, Maine — Bold decorated box on a salmon ground, circa 1835.

STEVEN S. POWERS, Brooklyn, N.Y. — Untitled (Girl with Book) by Lee Gatch (1902-1968), circa 1930, measuring 10 inches wide by 13 inches tall (sight).

ELLIOTT & GRACE SNYDER

P.O. Box 598 • South Egremont, MA 01258
info@elliottandgracesnyder.com
413-528-3581 (T) 413-441-4065 (C)
www.elliottandgracesnyder.com



Exceptional pair of signed brass trumpet sticks in excellent condition. England, c. 1660, 8" h.

Scott Bassoff Sandy Jacobs ANTIQUES



New Bedford, Massachusetts.
Decorated box on ball feet with double fruit baskets on front and seashells on top. 1830-1850s.

Swampscott, MA 01907 | cell 603.801.5532
www.sandyjacobsantiques.com | sandyjnh1@gmail.com
www.scottbassoffsandyjacobsantiques.com



THE ADA/HISTORIC DEERFIELD ANTIQUES SHOW

SPECIAL SHOW SECTION

Welcome And Take A Tour Of The Show

Dear Friends:

I am pleased to extend an invitation to you to attend the ADA/Historic Deerfield Antiques Show the weekend of October 20–21, at the Hartford Armory in Hartford, Conn. We are excited to see the show in the armory this year and to work with a new partner, the Connecticut Humane Society, in bringing the show to new audiences in the region.

This annual celebration of antiques and decorative arts is one of the most highly regarded shows on the East Coast. For many years, the show was held in the village that is home to our museum of early American life in Old Deerfield, Mass. Many of the antiques for sale at the show are similar to items on display in Historic Deerfield. Learn

more about their history on a visit to Deerfield, whether by seeing them displayed in one of our historic homes, or by visiting the Flynt Center of Early New England Life, where thousands of objects in our extensive collection are on view. For information, www.historic-deerfield.org.

On Saturday at noon, I will lead a tour of the show. Learn the story behind the stories hidden in some of the great antiques for sale. Learn to see things you might not have even noticed. This will be a fascinating, impromptu tour, using the objects dealers have brought to the show. The tour is included with admission to the show.

We look forward to seeing you at the show!

Philip Zea

President, Historic Deerfield



ADA/Historic Deerfield Antiques Show To Benefit CT Humane Society

HARTFORD, CONN. — Your next antique discovery may be your most important — because it will change a pet's life.

That's because the Antiques Dealers' Association of America Historic Deerfield Antiques Show October 19–21 at Hartford's Governor William A. O'Neill State Armory, 360 Broad Street, is benefiting pets in need at the Connecticut Humane Society (CHS).

The weekend begins with a preview party on Friday, October 19, from 6 to 8 pm. Tickets for the party are \$85 at www.cthumane.org, with all

proceeds from the evening supporting lifesaving medical care for local pets.

Show hours are October 20, 10 am to 5 pm, and October 21, 10 am to



4 pm, with tickets on sale at the door for \$15. There is an amazing array of antiques and knowledgeable experts in the field. The show is celebrated annually for its stellar dealer roster and remarkable selection of Eighteenth and Nineteenth Century American art, antiques and design.

"We are honored to work with the ADA and Historic Deerfield on this event, as we pave the way for more animals to find healthy and happy futures," CHS executive director Gordon Willard said. "We're so grateful for the support of those who attend and sponsor the event, all in the name

of saving more lives."

With each pet at CHS receiving full-service medical treatment by a staff veterinary team, funds for medical care are now more needed than ever before. While they will support spay/neuter, vaccinations and microchips, they will also go toward pets like Benny, a senior Pomeranian who is recovering from two surgeries on complicated hernias, and Gem, a 4-week-old kitten who was found alone outside and needs to be bottle-fed. It will also go toward monitoring pets' medical conditions and completing complex surgeries.

NATHAN LIVERANT AND SON, LLC ANTIQUES



William and Mary maple and tulip poplar lowboy. New England, 1715 - 1735.



168 SOUTH MAIN STREET, P.O. BOX 103, COLCHESTER, CT 06415
(860) 537-2409 FAX (860) 537-0577

Visit us at: liverantantiques.com

Follow us at: www.facebook.com/NLS.antiques • mail@liverantantiques.com



THE ADA/HISTORIC DEERFIELD ANTIQUES SHOW

SPECIAL SHOW SECTION



JEWETT-BERDAN, Newcastle, Maine — Puffy Sleeve artist in original frame.



MAD RIVER ANTIQUES, LLC, North Granby, Conn. — An early Nineteenth Century stoneware jar with an incised flower decoration, made at the Hartford, Conn., pottery of Goodwin and Webster.



JEFFREY TILLOU ANTIQUES, Litchfield, Conn. — Rare tole ware bombe-form tea caddy, probably English, late Eighteenth Century.



AUGUSTUS SAINT-GAUDENS (1848-1907), "The Women's Auxiliary of the Massachusetts Civil Service Reform Association" Medal, 1905-6, plaster with an iron rebar sub-structure (customary), 30.75" in diameter. This was the preparatory plaster for the medal which was commissioned by Marian Clark Nichols, niece of Saint-Gaudens. Unique version. For a discussion of the reduced bronze version of the medal, see Dryfhout #199.

RESSER·THORNER
ANTIQUES
A single-owner shop in the New England tradition

603-540-4712
695 River Road, Manchester, NH 03104
By Appointment



STEVEN S. POWERS, Brooklyn, N.Y. — A fine Gogotte "Finger Sandwich," Fontainbleu France, Oligocene epoch (33.9 million to 23 million years old), measuring 13 inches high.



BERNARD & S. DEAN LEVY, INC, New York City — A curly maple stand attributed to Edward Bliss (1791-1865) Hartford, Conn., circa 1810. Reference: An almost identical candlestand with the "hockey stick" legs made by Edward Bliss is in the collection of the Connecticut Historical Society (1986.6.0).



VILLAGE BRAIDER INC, Plymouth, Mass. — Wrought iron and copper owl on a marble base signed Henry Bazaz and dated 1972, 14½ inches tall.

THE ADA/HISTORIC DEERFIELD ANTIQUES SHOW

SPECIAL SHOW SECTION

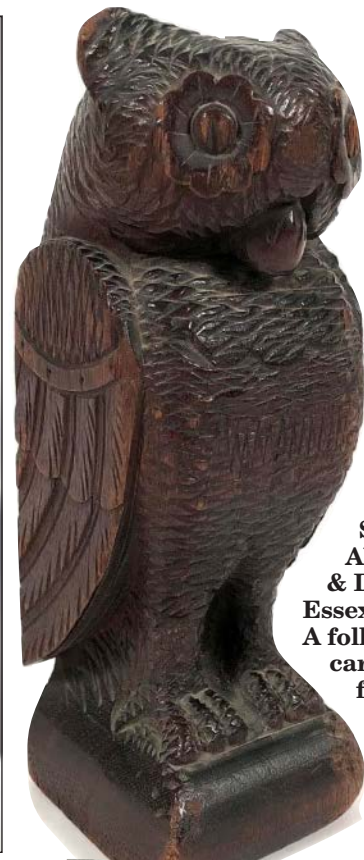
NATHAN LIVERANT AND SON, Colchester, Conn. — Fire bucket from the Protection Volunteer Fire Company, dated 1761, and made for "P. Rice." Lower Manhattan, Fulton and Ann Streets, New York City, 1780–1815.



LAGENBACH'S, Kingston, Mass. — A Rhode Island pipe box painted black.



COLETTE DONOVAN, Merri-macport, Mass. — Brass fish cake mold for the hearth, American or English.



ANDREW SPINDLER ANTIQUES & DESIGN, Essex, Mass. — A folk art, well-carved wood figure of an owl, American, circa 1880.



AXTELL ANTIQUES, Deposit, N.Y. — A portrait sculpted in blue stone of a cow, measuring 8 by 12 by 1½ inches.



4'4" x 5 Caucasian prayer rug with a yellow background, circa 1900 in excellent original condition.

Ralph & Karen DiSaia ORIENTAL RUGS

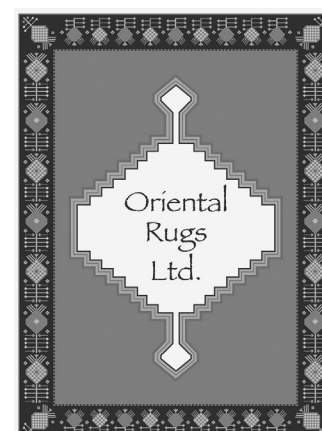
Connecticut's Trusted Resource
for Distinctive Antique Carpets

Oriental Rugs Ltd.

Niantic, CT

orientalrugs@snet.net • 860-908-0076

open by appointment



www.orientalrugsltd.com

THE ADA/HISTORIC DEERFIELD ANTIQUES SHOW

SPECIAL SHOW SECTION



Cat-shaped urinal, hard-paste porcelain, China, circa 1830–50. This cat-shaped head is removable and the curved tail forms a handle. 65.233, Historic Deerfield Inc, Deerfield, Mass. —Penny Leveritt photo

An oil on canvas of an elegantly dressed young boy with his purebred spaniel convey his wealth, status and refinement, circa 1750, England or America. 1441, Historic Deerfield Inc, Deerfield, Mass. —Penny Leveritt photo

‘Woof, Meow, Chirp: Pet Presence’ Historic Deerfield’s Photo Exhibit

More than 65 percent of United States households (about 85 million families) have pets, and America becomes more pet friendly every year. According to historian Katherine C. Grier, author of *Pets in America: A History* (Chapel Hill, 2006), pet keeping is not a new phenomenon. Cats and dogs accompanied European immigrants to the American colonies not only as work animals but also as companions.

Historically the animals we now consider “pets” were working members of the family, often with important jobs. Dogs protected their owner’s property, worked livestock, hunted game and destroyed vermin; cats were valued as good mousers. Sometimes rare pets — purebred dogs or exotic birds and animals — signaled their owners’ wealth and

status. By the 1820s, more Americans kept pets for the companionship and amusement their behavior provided. Pet keeping became an important component of family life and a way for children to learn “habits of kindness.”

Historic Deerfield’s collection is rich in representations of pets incorporated as design elements on artwork and utilitarian objects. This photographic exhibition, specially prepared for the ADA/Historic Deerfield Antiques Show, highlights the presence of pets in early American paintings, watercolors, needlework, textiles, metalware and ceramics. Across the distance of time, one still feels the universal human connection to a faithful, furry dog or a mischievous, purring cat, as well as the comfort and affection that these pets bestowed.

Historic Deerfield Bio

DEERFIELD, MASS. — Located in the Connecticut River Valley of western Massachusetts, Historic Deerfield, Inc is nestled in a centuries-old, quintessential rural New England village with authentic, historic buildings that date as far back as 1714.

This unique museum, which maintains 54 buildings (including 12 historic houses that are regularly open to the public as well as an exhibition building, the Flynt Center of Early New England Life) focuses on the significance of small-town America to the national culture.

Founded in 1952, the museum stewards a nationally significant collection of approximately 28,000 household artifacts both rare and common — including furniture, metalwares, textiles, needlework, ceramics, and more — many with documented histories of local ownership or manufacture. These authentic objects document the stories and founding years of our nation, and through them, visitors learn the stories of generations of real people whose beliefs, belongings, lifestyles, conflicts, economy and technology unlock the door to the past and help us better understand today. Thousands of objects in the extensive collection are on view at the Flynt Center of Early New England Life.

Historic Deerfield is at 80 Main Street. For information, 413-774-5581 or 413-775-7214 or www.historic-deerfield.org.



Wells-Thorn House



The Dwight House



Mad River
Antiques, LLC



A rare five-gallon stoneware churn from the Nathan Clark pottery in Rochester, NY, decorated with a large bird often called a phoenix.

Steve & Lorraine German
North Granby, CT 06060

Phone: (860)-653-5733
Email: madriverrantiques@aol.com
Web: www.madriverrantiques.com

STEVEN S. POWERS

G O O D
W O O D



Exceptional Woodlands Indian Small Doubled Handled Ash Burl Bowl
Circa: 1740-1760 / Size: 11 3/4" (l) x 5 5/8" (h) / Provenance: Roger Bacon

WORKS OF
& AMERICAN ART

109 3RD PLACE #2, BROOKLYN, NY 11231 |
917.518.0809 | STEVENSPOWERS.COM | MEMBER: ADA

THE ADA/HISTORIC DEERFIELD ANTIQUES SHOW

SPECIAL SHOW SECTION



SCOTT BASSOFF/SANDY JACOBS ANTIQUES, Swampscott, Mass. — Nineteenth Century English lover's eye token.



DANIEL AND KAREN OLSON, Newburgh, N.Y. — Nineteenth Century New England redware jar with original lid, 11 inches tall.



STEPHEN & CAROL HUBER, Old Saybrook, Conn. — Much has been written about Hunterdon County, N.J., samplers. See *A Sampling Of Hunterdon County Needlework* by Dan and Marty Campanelli. Their incredible research and efforts have brought numerous Hunterdon County samplers out of the shadows. This example, to date, is the earliest one known from this classic Hunterdon County "Collared Deer" group and simply one of the best. Thisbe Britton is a second cousin to Fanny Britton whose sampler is pictured on the front cover of Dan and Marty's above-mentioned book. Thisbe Britton (1804-1826), Hunterdon County, N.J., was the daughter of Samuel Britton (1779-1814) and Sarah Curtis. Thisbe was probably in her early teens when she worked this sampler of silk on linen, 16¾ by 20¾ inches framed, 13-7/8 by 17-7/8 inches sight, circa 1818. She died at the young age of 21. Visit www.antiquestsamplers.com



MAD RIVER ANTIQUES, LLC, North Granby, Conn. — Three early children's mugs.



VILLAGE BRAIDER INC, Plymouth, Mass. — Wrought iron goat signed Henry Bazaz and dated 1970, 10 inches tall.

Maria & Peter Warren Antiques

For 36 years Maria and Peter Warren Antiques has specialized in 18th and 19th Century English Ceramics, Chinese Export, Delft, Paintings from the 19th Century and 20th Century, Early American Furniture, and now vintage, mid-century modern and many other beautiful decorative arts.

From Antique Shows to Store Front: Now, while, we are still exhibiting at many wonderful shows, you can stop by our shop at 150 Main Street in Monroe, CT, hours Tuesday-Friday from 10-6 and Saturday from 12-6 and also by appointment. Call 203-984-6174 or e-mail us at ajwarren1@yahoo.com. www.warrenantiques.com



A Pair of Black and White Disraeli Spaniels, c1860; Dimensions 10" H.



A Solid body Agate tea pot and cover with a dog of foo knop on three mask and paw feet; Dimensions: 4"H; 6"L.



A Rare English Staffordshire Slip Decorated Monkey, c1780-90; Dimensions: 4½"H.



A Rare Chinese Export blue and white Fitzhugh Vase, c1790-1810, Dimensions: 11"H; 9¾ Diameter.



A Folk Art Carving of a Nautical Figure, American c1840-60; Dimensions: 3 feet 3" to his hat; 3 feet 6" to the top of his spyglass.



An English Creamware Vegetable Tureen with Twisted Rope handles and Knop ending in foliate terminals most likely Leeds, c1780-90; Dimensions: 6½"H; 8" Diameter.



An English Staffordshire Pearlware Lion on a marbleized base, c1840-50, Dimensions: 12"L.

Exhibiting at:

ADA Deerfield Antiques Show: October 20-21, Hartford Armory
Delaware Antiques Show: November 9-13, Chase Center at the Waterfront, Wilmington, Delaware
Washington Winter Show: January 11-13, 2019, Washington, DC
New York Antiques Ceramics and Arts Fair: January 17 - 20, 2019, New York City
Connecticut Spring Antiques Show: March 21 and 22, 2019, Hartford Armory

150 Main Street • Monroe, CT 06468 • 203-984-6174 • ajwarren1@yahoo.com

THE ADA/HISTORIC DEERFIELD ANTIQUES SHOW

SPECIAL SHOW SECTION



LAGENBACH'S, Kingston, Mass. — A rare Windsor oval footstool painted black.



MARIA AND PETER WARREN ANTIQUES, Monroe, Conn. — An English pearlware underglazed spongeware decorated horse in Pratt colors, circa 1770–80.



SAMUEL HERRUP ANTIQUES, Sheffield, Mass. — Rare American splay leg maple joint stool table, circa 1720, measuring 23½ inches high, and the top is 17½ by 25 inches.



PAUL DeCOSTE, West Newbury, Mass. — Hooped topped regional basket.



THE ADA/HISTORIC DEERFIELD ANTIQUES SHOW
October 20-21

RESSER-THORNER ANTIQUES, Manchester, N.H. — Anna Pottery Railroad Pig flask, which is 6¼ inches long by 2½ inches tall.

Chopper
An Eighteenth Century chopper made from hand forged iron, graphic form, 8 by 8 inches.

FOLK ART • BASKETS & STONEWARE
EARLY LIGHTING • REDWARE • TREEWARE
the Rookery 1799
AXTELL ANTIQUES
Axtell Antiques
- EARLY AMERICANA -
RICHARD S. AXTELL
1 River St., Deposit, NY 13754
Now open Tuesday through Saturday 10:00 to 4:00
607-467-4444 • e-mail: rsaxtell@msn.com
HEARTH ACCESSORIES • AMERICAN COUNTRY FURNITURE

Colette Donovan
Early American Country
Antiques with Textiles
Merrimacport, MA
978.346.0614

*Detail of chintz bed hangings
for a tester bed.*

THE ADA/HISTORIC DEERFIELD ANTIQUES SHOW

SPECIAL SHOW SECTION



JEWETT-BERDAN, Newcastle, Maine — Mid-Nineteenth Century unusual red and black grain-painted two-tier hanging shelf with cutout hearts.



DANIEL AND KAREN OLSON, Newburgh, N.Y. — American portrait of a young woman by Joseph Whiting Stock, oil on canvas, circa 1840, measuring 25 by 30 inches without frame. It has its original gilt frame.



COLETTE DONOVAN, Merrimacport, Mass. — The Rushlight Club describes this form as an "alpine candleholder" in the book *Early Lighting*.



JEFFREY TILLOU ANTIQUES, Litchfield, Conn. — Levi Wells Prentice (1851–1935) a still life with pears and grapes.

At The Hartford Armory
360 Broad Street,
Hartford, CT

NATHAN LIVERANT AND SON, Colchester, Conn. — View of Windham, Conn., from the east in 1815. Lithograph by E.B. and E.C. Kellogg (inscribed) of Hartford, Conn.



Jewett-Berdan



Large watercolor theorem on paper with vibrant colors, Circa 1835 in original gold frame measuring 23" x 19" framed.

Thomas J. Jewett



15 Hopkins Hill Road
Newcastle, Maine 04553

(207) 563-3682

www.jewettandberdan.com

jewett-berdan@roadrunner.com



Charles P. Berdan

THE ADA/HISTORIC DEERFIELD ANTIQUES SHOW

SPECIAL SHOW SECTION



MAD RIVER ANTIQUES, LLC, North Granby, Conn. — A late Eighteenth Century tortoiseshell-ware plate, probably made at the English pottery of Thomas Whieldon.



ANDREW SPINDLER ANTIQUES & DESIGN, Essex, Mass. — An expressive carved wood milliner's head, American, circa 1880.



STEPHEN & CAROL HUBER, Old Saybrook, Conn. — Elizabeth Hale Pickard was born April 7, 1823, and worked this beautifully crafted graphic sampler when she was 11 years old. She compared her future life to a “sampler worthy to be shown.” The poignant verse reads: This little sampler here I show/ To prove the care my friends bestow/ So be my life when I am grown/ A sampler worthy to be shown. Elizabeth and her younger brother were the only children born to Isaac and Ednah (Hale) Pickard, all from Ipswich, Mass. At age 22 on July 10, 1845, she married James Tibbetts and died two months later. She had a short life but left us her beautiful sampler that is still being cherished centuries after her death. It is made of silk on linen, 16½ by 16 inches sight, 19½ by 19 inches framed, circa 1834. Visit www.antiquesamplers.com



STEPHEN-DOUGLAS ANTIQUES, Bellows Falls, Vt. — Slipware English charger, Eighteenth Century, 16-inch-diameter, 3 inches deep.



PAUL DeCOSTE, West Newbury, Mass. — A 3¼-inch-diameter and an 8-inch-diameter American eagle plate.



NATHAN LIVERANT AND SON, Colchester, Conn. — Relief carving of pickerel by Leander Plummer of New Bedford, Mass., 1885–1910.



Langenbach's

FINE ART AND ANTIQUES

Signed and titled on the back
“Sequin Light, Mouth of the Kennebec River
by C. Drew, 1887”
8” x 12” in period frame.

164 Elm Street, Kingston, MA 02364 • 781-585-6123 (Day) 781-585-6529 (Evening) • E-mail: langenbach@verizon.net



THE ADA/HISTORIC DEERFIELD ANTIQUES SHOW

SPECIAL SHOW SECTION



Daniel and Karen Olson

Dealing in authentic antiques for over 35 years

1445 Route 300
Newburgh, New York 12550
Home Phone: (845) 564-0572
Cell Phone: (914) 474-1736
E-mail: olsonantiques@earthlink.net



*Early burl bowl of exceptional size,
21¼" diameter, 8¼" high*



MARIA AND PETER WARREN ANTIQUES, Monroe, Conn. — A Chinese export tobacco leaf platter, circa 1780.

THE ADA/HISTORIC DEERFIELD
ANTIQUES SHOW
October 20-21

SAMUEL HERRUP ANTIQUES, Sheffield, Mass. — New York linen press, gum with pine secondary wood, circa 1790, measuring 79 inches high by 37½ inches wide.



SCOTT BASSOFF/SANDY JACOBS ANTIQUES, Swampscott, Mass. — Nineteenth Century watercolor drawing of a young boy with his pet bird, Newbury, Mass.



THE COOLEY GALLERY
Fine American Art

25 Lyme Street, Old Lyme, CT 06371
860-434-8807

www.cooleygallery.com



Aaron Draper Shattuck, "Summer in Farmington, CT"
Oil on canvas, 11 x 17

THE ADA/HISTORIC DEERFIELD ANTIQUES SHOW

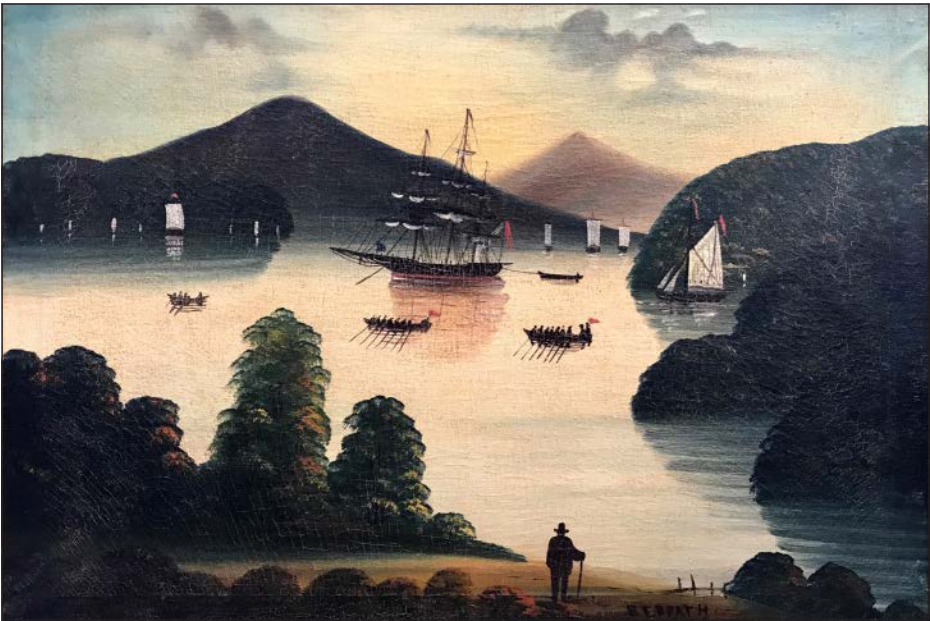
SPECIAL SHOW SECTION



JEWETT-BERDAN, Newcastle, Maine — School girl “Goddess of Liberty” watercolor on velvet.



AXTELL ANTIQUES, Deposit, N.Y. — A “Down East” hearth toaster made from hand forged iron and showing great detail work. It measures 4 by 16 inches.



STEVEN S. POWERS, Brooklyn, N.Y. — “Lake George, (New York),” Ralph Redpath” oil on canvas, dated 1867, measuring 24 by 35 inches sight.



Silver presentation Fire Trumpet
inscribed “Presented to Barnicoat Engine Co. No. 2
by John Heard Ipswich, July 28th, 1868”
19½ inches tall with original cord

Please contact Paul DeCoste at
978-363-1420 with questions.



BERNARD & S. DEAN
Levy INC.
The Finest American
Antiques & Art Since 1901

DIMINUTIVE CHIPPENDALE CHEST OF DRAWERS

Rhode Island, Circa 1770



Primary Wood: Maple • Secondary Woods: Chestnut, White Pine
Height: 30 inches • Width: 25½ inches • Depth: 14¾ inches

Bernard & S. Dean Levy Inc.
24 East 84th Street, New York, NY 10028
212-628-7088 • www.levygalleries.com

THE ADA/HISTORIC DEERFIELD ANTIQUES SHOW

SPECIAL SHOW SECTION



DANIEL AND KAREN OLSON, Newburgh, N.Y. — Nineteenth Century Pennsylvania original paint-decorated tray with crystalline center measures 12¼ by 8¾ inches.

COLETTE DONOVAN, Merrimacport, Mass. — Early Eighteenth Century candlestand in exceptional form, surface and condition. The is the first time out from the Plummer family homestead in Newbury, Mass.



THE COOLEY GALLERY, Old Lyme, Conn. — “Grassy Hill,” Percival Rosseau, oil on canvas, 36 by 50 inches.



ANDREW SPINDLER ANTIQUES & DESIGN, Essex, Mass. — A set of four Art Deco period klismos-form dining chairs, together with an Eero Saarinen designed Tulip table and a Swedish art pottery cobalt and silver glazed pottery vase.



LAGENBACH'S, Kingston, Mass. — A labeled Davis Hall oval Nantucket Lightship basket and a 6½-inch miniature oval Nantucket Lightship basket attributed to A.J. Sandsbury.

STEPHEN • DOUGLAS

Rockingham, Vermont • 802-463-4296 • Walpole, New Hampshire



Early 18th century trestle base, shoe foot table, American. A great rarity.



Early English Toby jug and most unusual Toby mugs.

THE ADA/HISTORIC DEERFIELD ANTIQUES SHOW

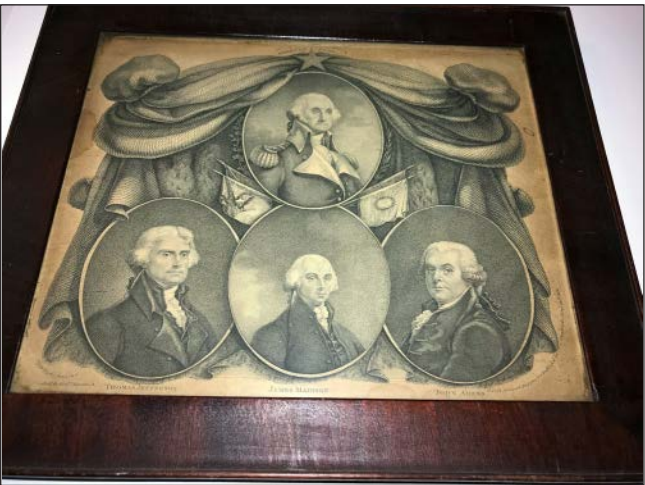
SPECIAL SHOW SECTION



MARIA AND PETER WARREN ANTIQUES, Monroe, Conn. — An English creamware Quintal vase with underglaze green enameling, most likely Yorkshire, circa 1780-90.



AXTELL ANTIQUES, Deposit, N.Y. — An Eighteenth Century chopper made from hand forged iron, graphic form, 8 by 8 inches.



RESSER-THORNER ANTIQUES, Manchester, N.H. — “American Star,” an engraving of the first four Presidents by Thomas Gimbrede, printed by Andrew Maverick, 1812. Uncolored line and stipple engraving in its original, untouched condition and frame, 9 by 11 inches. Hart 794, Baker 231.



STEPHEN-DOUGLAS ANTIQUES, Bellows Falls, Vt. — Eighteenth Century English folky carved wooden fragments.



SCOTT BASSOFF/SANDY JACOBS ANTIQUES, Swampscott, Mass. — Black Americana and folk art together in this carved picture frame, 1915.



BERNARD & S. DEAN LEVY, INC, New York City — Federal eagle inlaid chest of drawers, circa 1800, from Connecticut, Northern Massachusetts or Vermont.

Village Braider Inc.
Plymouth, Mass.
508-746-9625



Carved and painted wood penguin with glass eyes, Ca. 1980, by Wooden Wildlife, Kennebunk Maine, illegibly signed, 17" tall.



STEPHEN & CAROL
HUBER
America's Preeminent Source for Girlhood Embroideries



Lucy M. Dunklee of Lyndeborough, NH worked this folksy animal sampler at age ten c.1830

ALWAYS INTERESTED IN PURCHASING FINE NEEDLEWORK
FORTY FERRY ROAD, OLD SAYBROOK
CONNECTICUT 06475
TEL 860.388.6809 • Hubers@AntiqueSamplers.com
www.AntiqueSamplers.com

THE ADA/HISTORIC DEERFIELD ANTIQUES SHOW

SPECIAL SHOW SECTION



STEPHEN & CAROL HUBER, Old Saybrook, Conn. — This small interesting needlework picture depicts a Seventeenth Century dining scene featuring a royal couple, probably King Charles II and Catherine of Braganza. It appears their guest with folded arms is waiting for a glass of wine. Or maybe the young man is a taster, and they are all waiting to see if he keels over before they imbibe. At any rate, all eyes are on the young man with the glass of wine. It is made of silk and metallic thread on silk; measuring 7¾ by 11¼ inches with original frame, circa 1665, English. Visit www.antiquesamplers.com



STEPHEN-DOUGLAS ANTIQUES, Bellows Falls, Vt. — Nantucket basket, 4¼ inches wide by 6½ inches long by 3 inches deep, signed "Hall 1.00."



NATHAN LIVERANT AND SON, Colchester, Conn. — Pair of Chippendale upholstered back stools, Coastal Massachusetts, 1770-95.



JEFFREY TILLOU ANTIQUES, Litchfield, Conn. — "View of Mount Chicoro," unsigned, American School, from the mid-Nineteenth Century.

SAMUEL HERRUP ANTIQUES, Sheffield, Mass. — Excellent English walnut veneered quillwork tea caddy, circa 1780, measuring 4 inches high by 4¼ inches wide by 4½ inches deep.



THE COOLEY GALLERY, Old Lyme, Conn. — "Along the Farmington River," Charles Foster, oil on canvas, 18 by 20 inches.

ANDREW SPINDLER

WWW.SPINDLERANTIQUES.COM
978.768.6045

GOOD DESIGN TRUMPS POLITICS



TWO ART DECO PERIOD STYLIZED ANIMAL FIGURES: A CREAM, CRACKLE-GLAZED POTTERY ELEPHANT AND A CARVED, PAINTED WOOD HORSE (OR DONKEY), CIRCA 1925-30.

THE ADA/HISTORIC DEERFIELD ANTIQUES SHOW

SPECIAL SHOW SECTION

HOME *for the* HOLIDAYS

**Give pets the greatest gift.
Donate now.**

Gifts from donor-advised funds & shares of stock accepted.



Newington • Waterford • Westport • 1-800-452-0114 • CThumane.org



ANDREW SPINDLER ANTIQUES & DESIGN, Essex, Mass. — A bold folk art carved and painted wood book-form box, with “marbled” end papers, American, circa 1875, on a later removable stand.



PAUL DeCOSTE, West Newbury, Mass. — Exceptional Eighteenth Century canted wall box in untouched paint from the Janis Blouin collection. It measures 15½ by 10½ inches.

Phillip Zea & Arthur Liverant Talk On Eliphalet Chapin

Phillip Zea and Arthur Liverant will give a talk on Saturday at 2:30 pm on “The Iconic Eliphalet Chapin, His Genius and Influence.” Hear the story of how a East Windsor furniture maker’s “fateful liaison” with an unmarried woman in June 1766 helped pave the way for the Connecticut Valley’s golden

age of furniture production. “It’s almost a story of redemption,” said Richard C. Malley, head of research and collections at the Connecticut Historical Society. “He’s a young guy, he made a mistake, he went away and was transformed in a couple of different ways — as a craftsman and, ostensibly, as a citizen.”



VILLAGE BRAIDER INC, Plymouth, Mass. — Patinated bronze rhinoceros, “Rhino Rex,” by Donald Miller, 10 inches long.



JEFFREY TILLOU ANTIQUES



Dexter Horse and Rider Weathervane, Ca, 1870-1890

Attributed to Harris & Company, Boston, Massachusetts.

Full body molded copper, copper tubing, with cast zinc heads on both horse and rider. Condition: Excellent condition.

19 ¾” h. (on stand), 33” w., 4 ½” d.

39 West St. “On the Green” in Litchfield, CT 860.567.9693 tillouantiques.com



PORTRAIT OF A WOMAN

Fine 18th Century American portrait of a woman, oil on canvas, attributed to Samuel King (1749-1819), Newport, Rhode Island, probably painted circa 1795, to memorialize the death of the sitter’s husband shown in the portrait miniature.
31¾” x 25¾” including original frame.

Samuel Herrup Antiques

116 Main Street, P.O. Box 248, Sheffield, MA 01257

(413)229-0424 c: (413)822-1471

E-mail: herrup@verizon.net

Web: www.samuelherrup.com



