

# THE MARINE SALE

Important Scrimshaw & Prisoner-of-War Items | Fine Art | Ship Models, Rare Instruments, and More

Thursday and Friday, July 19 and 20, 2018

Both sessions beginning at 10 a.m. Eastern. On exhibit Wednesday, July 18 from 10 a.m. to 5 p.m. at our Cape Cod Headquarters.

Live auction with absentee, phone and online bidding available. Please call to order an auction catalog.



Exceptional Scrimshaw and Inlaid Lap Desk,  
Once Belonging to Capt. George Douglas



Magnificent China Trade Ship Portrait



Napoleonic Prisoner-of-War  
Bone Model of a 72-Gun Ship



"A Treacherous Cove" by Thomas Birch, circa 1830



Masterpiece Scrimshaw Whale's Teeth by Eli Bangs, Jr.



Complete Set of the **Voyages of Capt. Cook**, with Atlas



Alwilda Tooth



Impressively Large Pie Crimper



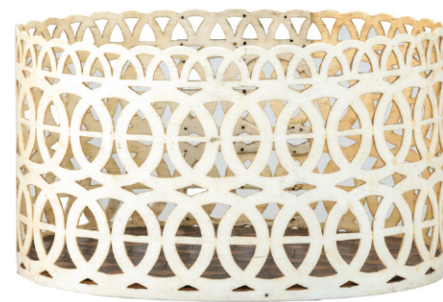
Britannia Engraver



Ceres Artisan



Exceptional Canes



Panbone Basket with Marquetry Base



Whaling Lance on Original Pole



MA Lic.#155

[www.eldreds.com](http://www.eldreds.com)

CAPE COD

Headquarters and Auction Venue  
1483 Route 6A, East Dennis, Mass.  
508-385-3116

CONNECTICUT

Open for consignment appointments  
and pick-up of select purchases  
5 Roosevelt Avenue, Mystic, Ct.  
860-912-8169