

CONNECTICUT SPRING ANTIQUES SHOW

Special Show Section

Participating Dealers
Connecticut

Martin Chasin Fine Arts LLC
The Cooley Gallery
Kirtland Crump
Roberto Freitas
Garvey Rita Art and Antiques
The Hanebergs Antiques
Hanes and Ruskin
Stephen and Carol Huber*
Nathan Liverant and Son Antiques
Mad River Antiques
Oriental Rugs Ltd.
Derik Pulito Antiques
Thomas Schwenke
Lewis Scranton
Stiles House Antiques
Jeffrey Tillou Antiques
Warren Antiques*
Jane Wargo
Paul and Karen Wendhiser

Delaware

John Chaski
James Kilvington

Kentucky

Dover House Antiques

Massachusetts

Scott Bassoff & Sandy Jacobs
Blue Heron Fine Arts
Peter H. Eaton Antiques Inc.
Samuel Herrup
Donna Kmetz
Leatherwood Antiques
Paulette and Hilary Nolan
Grace and Elliott Snyder
Village Braider

Maryland

Firehouse Antiques

Maine

Jewett and Berdan
Port N' Starboard Gallery
Dennis Raleigh
W.M. Schwind*

Michigan

Bette & Melvyn Wolf

North Carolina

Collecting The Past*

New Hampshire

Mark and Marjorie Allen
Hollis Brodrick
John Rogers LLC
Withington & Company

New Jersey

Randi Ona
RGL Antiques*

New York

Artemis Gallery
Axtell Antiques
Daniel and Karen Olson
J Gallagher Antiques

Ohio

David Good Antiques

Pennsylvania

Jeff R. Bridgman American Antiques
Saltbox Antiques*
Steven Still

Vermont

Stephen-Douglas Antiques

Virginia

Thistlethwaite Americana

*New dealer this year

Our Media Sponsors:



Revisit Timeless Style

**Early American furniture, folk art, pottery, porcelain,
primitives, ceramics, fine art and so much more.**



CONNECTICUT SPRING ANTIQUES SHOW

March 24-25, 2018



**The Hartford Armory
360 Broad Street, Hartford, CT**

- ◆ Over 60 exceptional dealers
- ◆ Educational talks
- ◆ Free on-site parking
- ◆ Admission \$15
- ◆ Collectors 35 and younger admitted free on Sunday

Saturday 10 - 5, Sunday 11 - 4
ctspringantiquesshow.com • 860-345-2400



Presented by The Haddam Historical Society • Managed by Karen L. DiSaia



Find us on
Facebook



“An American Treasure Trove.”

- Antiques and the Arts Weekly

45th Connecticut Spring Antiques Show A Signature Event March 24 & 25

The 45th Annual Connecticut Spring Antiques Show, one of the most celebrated antiques venues in the region, will be held on March 24 and 25, at the landmark Hartford Armory, 360 Broad Street. The show, which is “the essential destination for early American furniture and accessories,” is broadening its emphasis and adding new content such as garden objects, folk art and primitives to make the show more relevant and appealing to a broader audience.

In order to experience and appreciate these exceptional objects in a meaningful way, they must be seen close-up and considered. The Connecticut Spring Antiques Show allows visitors to explore the stories, craftsmanship and beauty of these one-of-a-kind pieces. Sixty of the country’s most knowledgeable and renowned antiques and art dealers will be on-hand to answer questions and share the unique stories behind each object. This is an opportunity to revisit timeless style.

There will be two educational programs included in the admission. Arthur Liverant will present “Little Chairs for Little Buns” on Saturday at 2 pm. Liverant, a world-renowned expert on early American furniture, will delve into the unique character and history of this diminutive furniture type, each with a small spe-



Signature quilt from Haddam Neck with the signature of Miss Frances Russell and photo of Mrs Chauncy Arnold who also signed the quilt.

cial story. On Sunday at 2 pm, Lorraine German of Mad River Antiques will talk about her new book *Soil and Shul in the Berkshires: The Untold Story of Sandisfield's Jewish Farm Colony*, the story of early Twentieth Century Jewish families relocated to rural areas to farm and help alleviate the overcrowding of Jewish neighborhoods in New York City.

In addition, the show offers free

adjacent parking and a lovely café in the landmark Hartford Armory catered by the Officers' Club. On Sunday visitors age 35 and under will receive free admission.

A special exhibit of signature quilts will be on display and feature quilts loaned by friends and members of the Haddam Historical Society as well as quilts from the collection of the Thankful Arnold House Museum.

Friendship or signature quilts were made to celebrate a special event like a birth or marriage. Others were made to commemorate a major milestone or community event, and many were made as going away gifts to dear friends, neighbors or clergy. The friendship quilt became popular in the 1840s when the country was experiencing a great migration, and many families were leaving their New England roots for lands to the west. The quilts would feature blocks with the signatures of family and neighbors or precious messages from friends left behind.

One quilt on display is a friendship or album quilt made by residents of Haddam Neck and members of the local Congregational Church around 1860. Squares are signed by women of the congregation as well as few men, and the quilt is believed to have been a gift to the newly installed minister.

The proceeds of the Connecticut Antiques Show will support the Haddam Historical Society's programs, community outreach, collections and preservation and maintenance of the Thankful Arnold House Museum. For information, www.haddamhistory.org. For additional show information, www.ctspringantiquesshow.com or call 860-345-2400.

Jewett-Berdan



Pair of nautical overmantles painted on pine panels from Mystic Ct., circa 1830. Measuring approx. 26" x 32".

Thomas J. Jewett



15 Hopkins Hill Road
Newcastle, Maine 04553

(207) 563-3682

www.jewettandberdan.com

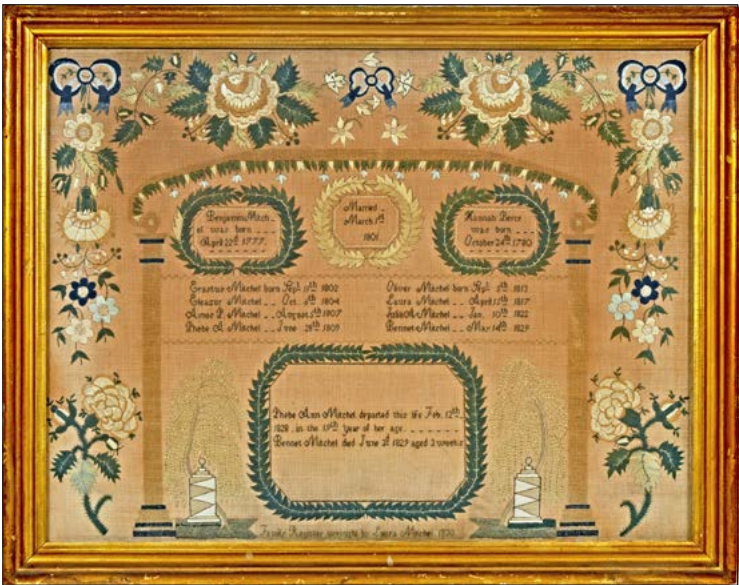
jewett-berdan@roadrunner.com



Charles P. Berdan

CONNECTICUT SPRING ANTIQUES SHOW

Special Show Section



STEPHEN & CAROL HUBER, Old Saybrook, Conn. — Laura Mitchel, at age 13, in 1830, worked this striking Family Register needlework sampler at Miss Cornwall’s school in Glastonbury, Conn., She recorded the births and marriage of her parents and the births and deaths of her siblings. There was no doubt that she was boarding in Glastonbury while attending school, because her family lived 50 miles away in South Britain, Conn. It is a silk on linen, 20¾ by 26 inches framed. Attached to the back is a page from the New Haven City Gazette dated April 22, 1830.




STEVEN F. STILL ANTIQUES, Manheim, Penn. — Carved pine pointing finger sign from the early Twentieth Century.




PORT N’ STARBOARD GALLERY, Falmouth, Maine — Large carved gilded spread wing eagle plaque perched n hemispherical plinth, polychrome crossed American flags and incised stars and stripes, circa early Twentieth Century, 74½ inches long, 21½ inches tall.



BLUE HERON FINE ART, Cohasset, Mass. — Japanese bird of Phoenix footed berry bowl with matching underplate, Meiji period.







CHIPPENDALE TALL CASE CLOCK

Litchfield County, ca. 1795-1805. Cherry, maple inlay, white pine secondary wood. Fine condition. In a desirable diminutive size, this Connecticut clock displays great proportions and scale. It is further embellished with inlay patterns characteristic of pieces with Litchfield County history.

83”h (top of finial); 20”w (hood); 13 ¾” (case); 10”d (feet)

39 West St. “On the Green” in Litchfield, CT 860-567-9693 tillouantiques.com





Mahogany pillar & scroll shelf clock by Seth Thomas, Plymouth, CT circa 1825

Clock Sales, Restoration and Repair • Appraisals

1225 Whirlwind Hill Road Wallingford, CT 06492

203-245-7573

www.kirtlandcrumpclocks.com • email: kirtland@sbcglobal.net

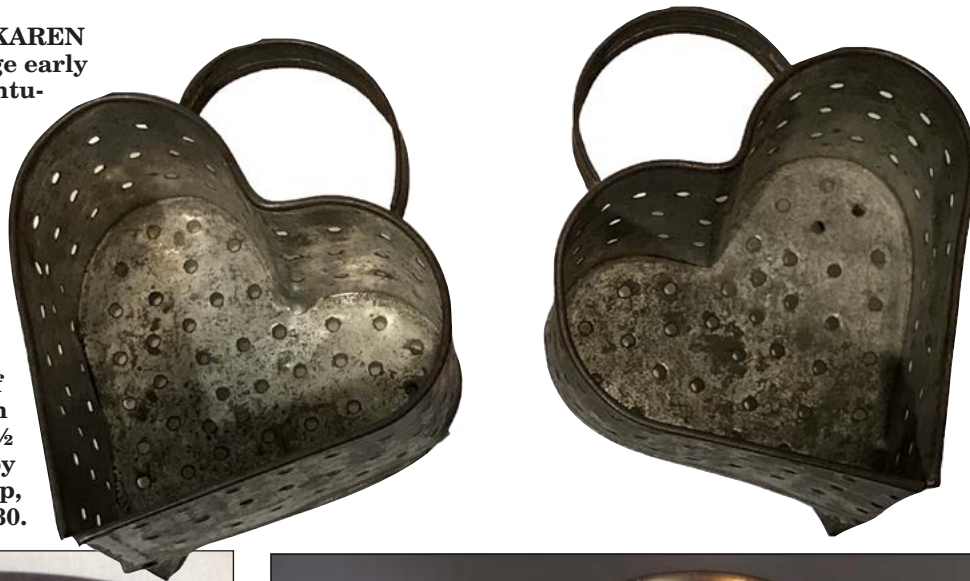
Special Show Section

CONNECTICUT SPRING ANTIQUES SHOW



DANIEL AND KAREN OLSON — Large early Nineteenth Century American paint-decorated tin trunk, New York state.

AXTELL ANTIQUES, Deposit, N.Y. — A pair of pierced tin cheese molds, 4½ inches wide by 3¼ inches deep, circa 1830.



SAMUEL HERRUP ANTIQUES, Sheffield, Mass. — Rare English delft plate, probably London, circa 1689-94, decorated with the portrait of William III and Mary II, 8½-inch diameter, ex Garry Atkins and J.V. Vizcarro.



STEPHEN-DOUGLAS ANTIQUES, Bel-lows Falls, Vt. — One of a pair of Oriental export garden seats, China, third quarter Nineteenth Century.



LEATHERWOOD ANTIQUES, Sandwich, Mass. — Set of four German traditional wedding cups in the form of a woman holding the libation aloft, which pivots, German, early Twentieth Century, sizes range from 8½ to 3½ inches tall. View photos at www.leatherwoodantiques.com under: Variety of Rarities & Curious

NATHAN LIVERANT AND SON LLC ANTIQUES

China Trade carved, gilt and paint decorated eagle wall plaque featuring a banner inscribed "E Pluribus Unum", American flags above a gilt eagle, an American shield and cannons with cannon balls below.

China, 1865 - 1885.

Fruitwood with polychrome paint and gold leaf.

Inscribed on the reverse with a history of ownership by Captain William Blethen (1818-1905) and his son Captain Galen Blethen (1847-1924) of Bath, Maine.

Dimensions: height - 13½", width - 16½"



168 SOUTH MAIN STREET, P.O. BOX 103, COLCHESTER, CT 06415

(860) 537-2409 • FAX (860) 537-0577

Visit us at: www.liverantantiques.com and follow us at: www.facebook.com/NLS.antiques



CONNECTICUT SPRING ANTIQUES SHOW

Special Show Section



NATHAN LIVERANT AND SON, Colchester, Conn. — Winter landscape of horse and barn by George Francis (1790–1873) of Hartford, Conn. Inscribed on the reverse and dated 1870.

PETER H. EATON, Newbury, Mass. — A remarkable William and Mary chest on frame with huge, collared Spanish feet. With applied molding under the top and double-arch molding on the case, and with a scrolled skirt, this rural piece is probably unique. Made of hard and soft pine, with chestnut rear legs and maple front legs, it retains a dark old crackled shellac finish showing traces of its deep original red paint. Its unusual form is matched by its interior construction, with unusual framing and drawer construction. Probably central or eastern Connecticut, 36½-inch case width, 45 inches tall, circa 1730-40.



JEWETT-BERDAN ANTIQUES, Newcastle, Maine — Early shirred hearth rug on linen.



LEWIS SCRANTON, Killingworth, Conn. — An excellent decorated redware jar attributed to Seymour of Hartford, Conn.



Carved cookie board signed J. Conger

John H. Rogers
ANTIQUES
CAFS, LLC
P. O. Box 234, Elkins,
New Hampshire 03233
603-526-6778



New England William and Mary
Desk on Frame.



Stiles House Antiques
30 Hollow Road, Woodbury, CT 06798
www.stileshouseantiques.com
(203) 405-6357

Special Show Section

CONNECTICUT SPRING ANTIQUES SHOW

LEATHERWOOD ANTIQUES, Sandwich, Mass. — This is a sweet oil on board painting of a young girl by Martha Cahoon, 1905–1999 (the wife of Ralph Cahoon from Cape Cod, Mass.), American, mid-Twentieth Century, measuring 12 by 10 inches. The more typical paintings they did were of whimsical mermaids and sailors. This subject of the cheerful little girl is unusual. View photos at www.leatherwoodantiques.com under: Prints, Paintings & Ephemera



JEFFREY TILLOU ANTIQUES, Litchfield, Conn. — W.A. Strout, Farm Agency advertising sign in pine, painted black letters on white background, measuring 11¼ inches high by 53½ inches wide by 2¾ inches deep, late Nineteenth/early Twentieth Century New England. The sign is in excellent condition, untouched surface.



DERIK PULITO, Kensington, Conn. — A New England, circa 1750, Queen Anne armchair, structurally in excellent condition with a 17-inch seat height, grain painted, later Nineteenth Century.



STEPHEN-DOUGLAS ANTIQUES, Bellows Falls, Vt. — New York State stencil-decorated dome top box, circa 1825–40.

ROYAL WORCESTER PILGRIM BOTTLES



Outstanding pair of Royal Worcester Pilgrim bottles decorated on each side with scenes of porcelain production. These were molded by James Hadley, Royal Worcester's leading modeler and painted by James Callowhill, the firm's leading decorator. Signed and dated 1873. Excellent condition. Similar Pilgrim bottles are in the Royal Worcester Museum. Height: 10¼ in. (See website for additional photos and further information.)

EDWARD SAVAGE PORTRAIT



Fine portrait of a woman, oil on canvas, attributed to Edward Savage (1761–1817, probably painted 1794/95) to memorialize the death of the sitter's husband shown in the portrait miniature. This striking portrait relates to several other Savage paintings, including the miniature on ivory of this artist's wife, Sarah Seaver Savage at the Worcester Art Museum. 30" x 24" including frame.

SAMUEL HERRUP ANTIQUES

116 Main Street, P.O. Box 248, Sheffield, MA 01257

(413)229-0424 c: (413)822-1471 • E-mail: herrup@verizon.net • Web: www.samuelherrup.com



CONNECTICUT SPRING ANTIQUES SHOW

Special Show Section



AXTELL ANTIQUES, Deposit, N.Y. — Roswell Gleason pewter whale oil lamp with glass lens, 8¼ inches tall, signed Patent, 1840.

SAMUEL HERRUP ANTIQUES, Sheffield, Mass. — Unusual English pearlware Toby jug, Night Watchman, mid-Nineteenth Century, 8½ inches tall.



GARVEY RITA ART & ANTIQUES, West Hartford, Conn. — Howard Rackliffe (1917–1987) “Garnet Sea,” 1972, mixed media on board, 10½ by 10 inches.



PORT 'N STARBOARD GALLERY, Falmouth, Maine — Copper three-masted schooner weathervane with directional arrow in original verdigris patina, circa mid-Twentieth Century, 29½ inches long, 25½ inches high by 5½ inches wide.



MAD RIVER ANTIQUES LLC, North Granby, Conn. — Two small stoneware pots from New York City date to the early Nineteenth Century. The pot on the right is attributed to Remmey pottery.



Settle
A great small size 18th century settle of New England origin. It is 100% original. Measures 54” wide x 44” tall.

Axtell Antiques
www.therookerybookery.com

• FOLK ART • BASKETS & STONEWARE

• HEARTH ACCESSORIES • AMERICAN COUNTRY FURNITURE • TREENWARE

• EARLY LIGHTING

• REDWARE

the Rookery
1792
AXTELL ANTIQUES

Axtell Antiques

• EARLY AMERICANA •
RICHARD S. AXTELL

1 River Street, Deposit, NY 13754
Now open by appointment • 607-467-4444
email: jamesfic2@tds.net

STEVEN F. STILL
Antiques



Two compartment poplar pipe box with scalloped top and sides. Likely made in Connecticut in the early nineteenth century. Excellent, original condition.

1717 South Colebrook Road • Manheim, PA 17545
Phone: (717) 459-3595 • Cell: (717) 682-0410

VISIT MY NEW WEBSITE AT
www.stevenstillantiques.com

Special Show Section

CONNECTICUT SPRING ANTIQUES SHOW



STILES HOUSE ANTIQUES,
Woodbury, Conn. — New England
figured maple tavern table.



JOHN ROGERS, New London, N.H. —
Turned covered burl sugar bowl.



LEATHERWOOD ANTIQUES, Sandwich, Mass. —
Amusing and fine watercolor of Uncle Sam and the
Vizcaya Spanish cruiser in the Spanish-American
War of the 1890s, American, circa 1898, measuring
11-5/8 by 9-9/15 inches. View more photos at www.leatherwoodantiques.com under: Prints, Paintings
& Ephemera

STEVEN F. STILL ANTIQUES, Manheim, Penn. —
Painted cast aluminum Indian amusement park
plaque by the Allen Herschell Company from North
Towanda, N.Y. The plaque with its original paint
was made in the second quarter of the Twentieth
Century.



Hollis E. Brodrick
Arts & Artifacts of Early New England



A fine selection of Colonial period decorative arts and artifacts of early America.
Come see what other historical treasures we'll have!

By appointment at 171 Washington Street, Portsmouth, NH • Mailing Address: PO Box 30, Portsmouth, NH 03802
Phone: 603.828.6158 • E-mail: hollisantiques@gmail.com



Also see me at the Danielson, CT Antique Show - April 7; the Tolland, CT Antique Show - March 4;
and the 61st Annual New Hampshire Antique Show, Manchester, NH - August 9-11



CONNECTICUT SPRING ANTIQUES SHOW

Special Show Section

SAMUEL HERRUP ANTIQUES, Sheffield, Mass. — Outstanding example of a stoneware jug, made by Frank B. Norton, Worcester, Mass., circa 1865, 14 inches tall.



JOHN ROGERS, New London, N.H. — Carved cookie board signed J. Conger.



JEFFREY TILLOU ANTIQUES, Litchfield, Conn. — Oil on panel in a period gilt frame of a patriotic eagle perched on a rock with outstretched wings, American, circa 1850-75, 13½ by 10 inches, unsigned, in excellent condition.



JEWETT-BERDAN ANTIQUES, Newcastle, Maine — Watercolor on paper of man standing at tea table attributed to J. Evans, circa 1833, in original frame. For another example, the same tea table is in the MFA collection.



STILES HOUSE ANTIQUES, Woodbury, Conn. — Oil on canvas of a boy with a hobby horse.

WILLARD LEROY METCALF (American, 1858-1925)



"Nantucket Reverie"

Oil on panel, 11" x 9"

Inscribed verso with signature W. Leroy Metcalf, July 1875.

PORT 'N STARBOARD GALLERY

Marine Antiques • Paintings • Folk Art

41 Colonial Drive, Durham, ME 04222 • 207-407-3160
e-mail: mleslie.art@gmail.com
www.portnstarboardgallery.com

STEPHEN DOUGLAS

Offering 17th, 18th and 19th century American Antiques



Oil painting of 19th century New York State woman on wood panel.

Call 802-463-4296 For An Appointment
Rockingham, Vermont
Walpole, New Hampshire

Special Show Section

CONNECTICUT SPRING ANTIQUES SHOW



THE HANEBERGS, East Lyme, Conn. — Full-bodied Dexter weather-vane with great surface.



NATHAN LIVERANT AND SON, Colchester, Conn. — Paint-decorated dome top document box featuring a light blue ground with red dot and red, yellow and blue floral designs and wrought iron lock, New England, 1820-40.



FIREHOUSE ANTIQUES, Galena, Md. — Federal armchair in the style of McIntire, from an important collection, along with details of the chair.



Elliott & Grace Snyder

413-528-3581 (T) • 413-441-4065 (C)

info@elliottandgracesnyder.com

www.elliottandgracesnyder.com

Liberty in the form of the Goddess of Youth; giving Support to the Bald Eagle

An unusually large and beautifully wrought silk needlework picture, based on the 1796 Philadelphia engraving by Edward Savage.

Transcribed on reverse: "Done by Harriet Merriam (born Dec. 5, 1797) in her sixteenth year."

Boston, c. 1813.

24½" x 21" (framed).

Hannah later married Joseph Fisher, master mate of the USS Constitution during the war of 1812.



CONNECTICUT SPRING ANTIQUES SHOW

Special Show Section



PAUL & KAREN WENDHISER, Ellington, Conn. — Profile of a young girl holding a dog, with unusual use of hand-cut velvet and lace applied to paper, measuring 5¾ by 7 inches, Nineteenth Century, in old grained painted frame.



MAD RIVER ANTIQUES LLC, North Granby, Conn. — An early Twentieth Century small polychrome game wheel.



THE HANEBERGS, East Lyme, Conn. — Oil on canvas of a boy with a hoop.




JOHN ROGERS, New London, N.H. — Masonic motifs on a large butter print initialed "JD."



THE HANEBERGS, East Lyme, Conn. — Rare tiny Canton cider jug in perfect condition.




Roberto  Freitas

American Antiques & Decorative Arts

QUEEN ANNE FLAT-TOP CHERRY HIGHBOY

Connecticut, 18th century

72"H x 38"W x 20"D



156 Water Street • Stonington, CT 06378


Call/Text: 860 535 1797 • info@robertofreitas.com

WWW.ROBERTOFREITAS.COM

Bette & Melvyn
Wolf, inc.

1196 SHADY HILL COURT,
FLINT, MICHIGAN 48532

18th & 19th C Pewter & Accessories



18th c. Philadelphia Salt by Parks Boyd

Tel. 810-732-6595 • Fax: 810-732-1467

E-mail: b.m.wolf@att.net

www.wolfpewter.com

Special Show Section

CONNECTICUT SPRING ANTIQUES SHOW



PETER H. EATON, Newbury, Mass. — A Queen Anne side chair made of walnut with maple secondary wood in Boston, circa 1760, retaining its original surface and its original leather seat with all foundation materials. A classic Boston chair with scrolled back stiles, a square seat and cabriole legs ending in pad feet. A rare survivor! The chair height is 39½ inches and the seat height is 17 inches. There is a small split in the leather and the right (facing) knee return is a replacement.

JEWETT-BERDAN ANTIQUES, Newcastle, Maine — Untouched folk portrait of young girl on artist board attributed to Prior Hamblin School, George Hartwell.



DANIEL AND KAREN OLSON —Nineteenth Century wood and pewter 24-tube candle mold, stamped with makers name from West Troy, N.Y.

DERIK PULITO, Kensington, Conn. — A Nineteenth Century 11½-inch painted (original) iron squirrel doorstop in excellent condition and initialed on back "S.M."

RANDI ONA, Wayne, N.J. — Make-do candlestick with early door latch push-up.



An extremely rare English salt-glaze polychrome enamel decorated lighthouse-form chocolate pot with gilt accents, circa 1750.



A pair of pearlware columnar blue-edge candlesticks, circa 1780-1790.



A beautiful famille verte Chinese export plate, circa 1760.



A finely potted Staffordshire salt-glaze scratch blue teapot together with an underglaze cobalt-blue Staffordshire salt-glaze sauce boat, circa 1750.



We specialize in 18th- and 19th-century English Ceramics, but we have added to that collection some lovely Chinese Export that covers the 18th through the early 20th centuries; we also have some Delft and some fabulous Decorative Arts. We'll be traveling the East Coast and Mid-Atlantic for the next couple of months and hope we'll meet you along the way so that you can enjoy, firsthand, what we have in stock. Unfortunately, we still don't have our website up; as soon as we do, you'll know about it first when you see our ad in *Antiques And The Arts Weekly*. In the meantime, you can contact me with any questions at: ajwarren1@yahoo.com



A small, mid to late 19th-century, carved and painted figurehead of a woman wearing earrings, her hair dressed in ringlets with a fancy comb.



A polychrome enamel yellowware intricately decorated jug with a well-done basket weave on the lower half, circa 1820.



A small beautifully engine-turned yellow-glazed yellowware jug, circa 1820.



An elegant English creamware covered vegetable tureen c1780-1790, dimensions 10"D; 7"H with/L; without 3"H.

Exhibiting at:
 Chester County – March 9-11
 Connecticut Spring Antiques Show – March 24 and 25
 Newport – July 28 and 29
 Antiques In Manchester – August 8 and 9
 Ellsworth – August 16-18
 Delaware – November 9-11

CONNECTICUT SPRING ANTIQUES SHOW

Special Show Section

DAVID & DONNA KMETZ
AMERICAN PAINTINGS

www.donnakmetz.com

Phone: 508-476-2214 Email: donnakmetz@charter.net



Edward Herbert Barnard
(1855 -1909)



CONNECTICUT SPRING ANTIQUES SHOW
March 24-25, 2018
The Hartford Armory
360 Broad Street, Hartford, CT

Booth Chat With
Lorraine German
‘Soil and Shul in the Berkshires’

On Sunday, March 25, at 2 pm, Lorraine German of Mad River Antiques will discuss her research and upcoming book *Soil and Shul in the Berkshires: The Untold Story of Sandisfield’s Jewish Farm Colony*.

Not many people realize that the first Jewish families who came to Sandisfield, Mass., in 1902 were part of a plan by the Jewish Agricultural and Industrial Aid Society in New York City to settle a Jewish agricultural colony in Berkshire County. There was a movement at the time to ease New York’s overcrowded Jewish neighborhoods by moving immigrants to rural areas where they could become farmers. Lorraine German has spent the last two years researching newspapers, historical records and first-hand accounts to tell the tale of this Jewish farming community, and she will share some stories from her book of the forgotten events and characters she has uncovered.

Lorraine and Steve German are the owners of Mad River Antiques LLC, specializing in Americana and decorative arts from the Eighteenth Century through the early Twentieth



Lorraine German

Century. They can be seen at many antiques shows throughout New England and are members of the Antiques Dealers’ Association of America. Their roots in Sandisfield’s Jewish community go deep because Steve’s grandparents bought the family home in the Sandisfield village of Montville in 1922 and they are proud to be third generation owners.

Soil and Shul in the Berkshires: The Untold Story of Sandisfield’s Jewish Farm Colony will be available in the late summer.

Scott Bassoff
Sandy Jacobs
ANTIQUES



17th and 18th century memorial jewelry. Skulls and Skeletons.

Swampscott, MA 01907 | cell 603.801.5532
www.sandyjacobsantiques.com | sandyjnh1@gmail.com
www.scottbassoffsandyjacobsantiques.com



Extremely rare possibly unique, sea green, concentric ring blown 3-mold bottle, C. 1830, New England Bottle Co. Or Keene, perfect condition.

David L. Good
ANTIQUES

7887 State Rt. 177, Camden, Ohio 45311
Phone: (513) 796-2693 Cell: (937) 478-1378

Special Show Section

CONNECTICUT SPRING ANTIQUES SHOW



MAD RIVER ANTIQUES LLC, North Granby, Conn. — A circa 1840 grain-painted and stenciled child's rocking chair from Pennsylvania.



PORT 'N STARBOARD GALLERY, Falmouth, Maine — Bronze great blue heron with original verdigris patina, 35 inches tall, 16 inches long and 6½ inches wide.



NATHAN LIVERANT AND SON, Colchester, Conn. — Federal mahogany and figured maple card table featuring veneer and inlay decorated frame and legs, 1795–1805. It is attributed to John Seymour, 1738–1818, and Thomas Seymour, 1771–1848, of Boston.



ROBERTO FREITAS, Stonington, Conn. — Mahogany easy chair, 47½ inches tall, circa 1740–50, Rhode Island.



STEVEN F. STILL ANTIQUES, Manheim, Penn. — Folk art carving group of animals found in New York State. This painted pine carving was made in the first half of the Twentieth Century.



Lewis W. Scranton ANTIQUES



38 Fire Tower Road, Killingworth, CT 06419 • (860) 663-1060



A very unusual round brass fingered container with long fingers and wooden top and bottom.



18th Century needlework of a woman sitting under a tree. In period frame. Excellent condition.

CONNECTICUT SPRING ANTIQUES SHOW

Special Show Section



STEPHEN & CAROL HUBER, Old Saybrook, Conn. — This beautiful silk embroidered picture by Martha Hale from Susannah Rowson's Academy, Boston, 1816, depicts the intriguing story of Achilles at the court of Lycomedes. It also demonstrates that these highly educated young ladies attending academies in the early Nineteenth Century, were among other things, studying Greek mythology. On the back is an early handwritten note describing the subject, artist, date, school and some provenance. It is silk and paint on silk, 25 by 32 inches framed.

Daniel and Karen Olson

Dealing in authentic antiques for over 35 years
1445 Route 300, Newburgh, New York 12550

Home Phone: (845) 564-0572
Cell Phone: (914) 474-1736
E-mail: olsonantiques@earthlink.net



Prior-Hamblin
oil on panel, c. 1840, of a young man,
period paint-decorated frame,
New England, 24" x 19½" framed



Arthur Liverant To Discuss 'Little Chairs For Little Buns'

On Saturday, March 24, at 2 pm, leading antiques dealer Arthur Liverant will discuss antique chairs made specifically for children.

Arthur Liverant is the third generation to own and operate Nathan Liverant and Son Antiques. Founded in 1920, the firm maintains a large inventory of fine examples of New England furniture, artworks and decorative arts of the Seventeenth, Eighteenth and early Nineteenth Century.

Arthur has long held a particular affection for antique children's chairs, with their distinct personalities and individual proportions. While his collection ranges widely in style, each and every chair is endearing in its own right, and each has a story to tell.

Nathan Liverant and Son is located in Colchester, Conn., and the shop is open Monday through Saturday from 10 am to 5 pm. For more information



Child's Windsor chair

on Nathan Liverant and Son, visit www.liverantantiques.com or at any of six major antiques shows.



Morris Shulman (1912-1978)
Monhegan Vista, 1947, Mixed media on paper, 24 x 16 inches

Garvey Rita Art & Antiques

322 Park Road, West Hartford, CT 06119
www.garveyrita.com | info@garveyrita.com | 860-983-6563

Special Show Section

CONNECTICUT SPRING ANTIQUES SHOW



GARVEY RITA ART & ANTIQUES, West Hartford, Conn. — A turtle carved out of wood, 23 by 10 by 6 inches, Twentieth Century American.



PAUL & KAREN WENDHISER, Ellington, Conn. — Sterling Mexican hinged cuff depicting an Aztec warrior head, marked JC, Taxco, Eagle 3, circa 1948. Also a sterling and amethyst Mexican bracelet with bird motif, marked ?CMS, pre 1948.



**CONNECTICUT SPRING
ANTIQUES SHOW**
March 24-25, 2018
The Hartford Armory
360 Broad Street,
Hartford, CT

STILES HOUSE ANTIQUES, Woodbury, Conn. — Coast Connecticut, in original red paint, circa 1750.

Randi Ona
Early American Antiques

www.onaantiques.com
onaantiques@optonline.net 973-495-3707



Mirror, mirror on the wall . . .



3 x 5'4 Shirvan c 1900 in excellent condition.

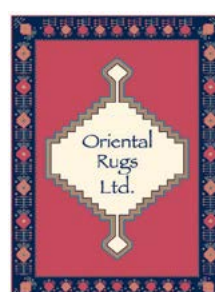
Ralph & Karen DiSaia
**ORIENTAL
RUGS**

Connecticut's Trusted Resource
for Distinctive Antique Carpets

Oriental Rugs Ltd.

Niantic, CT
orientalrugs@snet.net
860-908-0076
open by appointment

www.orientalrugsltd.com



CONNECTICUT SPRING ANTIQUES SHOW

Special Show Section

STEPHEN & CAROL
HUBER
America's Preeminent Source for Girlhood Embroideries



This beautiful silk embroidered Coat of Arms of the Olcott Family was worked at the Misses Pattens' School in Hartford, CT c.1807

**FORTY FERRY ROAD, OLD SAYBROOK
CONNECTICUT 06475**

TEL 860.388.6809 • Hubers@AntiqueSamplers.com
www.AntiqueSamplers.com



RANDI ONA, Wayne, N.J. — Hetchel dated 1773.



ROBERTO FREITAS, Stonington, Conn. — Thomas Chambers (British, 1808–1866, lived/active New York/England) “View from West Point,” oil on canvas, unsigned, 20 by 24 inches, 23 by 27½ inches framed.



*Mad River
Antiques, LLC*



A large stoneware jar with an unusual cobalt-filled incised floral decoration. It's attributed to the Crolus pottery of New York City and dates to the early 19th C.

Steve and Lorraine German
North Granby, CT 06060

Phone: (860) 653-5733
E-mail: madriverrantiques@aol.com
Web: www.madriverrantiques.com



Early and Bold Tiger Maple Tall Chest
The best tiger, the best form and the best old finish.
Original cotter pin brasses. Ca. 1740-60.

The Haneberg's
Antiques

BOUGHT & SOLD

5 Boston Post Road, East Lyme, CT 06333
Bob and Claudia Haneberg • By Appointment only
(860) 389-1908 • chaneberg@aol.com

Please look at our web site:
www.HanebergsAntiques.com

Proudly exhibiting at MacDougall-Gionet Antiques
on Rte. 1 in Wells, ME

Special Show Section

CONNECTICUT SPRING ANTIQUES SHOW

AXTELL ANTIQUES, Deposit, N.Y. —
Eighteenth Century Connecticut origin
hand forged iron with a diamond shield.



DERIK PULITO, Kensington, Conn. — Circa 1740 New England
sausage turned four-slat ladderback armchair in old black
with Nineteenth Century gilt decoration. There are exagger-
ated, graduated fat slats, extra tall finials and Milford, Conn.,
coastal area front stretchers. All original, full seat height.



LEWIS SCRANTON, Killingworth, Conn. — An oval Rockingham
frame in excellent condition.

PETER H. EATON

AMERICAN FURNITURE



A VERY FINE HUDSON VALLEY KAST, probably Ulster or Albany
Counties, made of gumwood, with pine secondary, c.1740-50. With
widely-projecting cornice, paneled doors, fluted columns (the cen-
ter one sliding to reveal the lock), a side-hung drawer with original
wooden knobs, and large flattened ball feet, this well-proportioned
kast even appears to retain its original finish. 69" wide, 77" in ht.,
the case depth is 18", and the cornice depth 24".

24 PARKER ST, NEWBURY, MA 01951 • (978) 465-2754
PETER@PETEREATON.COM • WWW.PETEREATON.COM



**Firehouse
Antiques**

100 & 102 North Main St.,
Galena, Maryland 21635
410.648.5639
firehouseantiquesPT@gmail.com



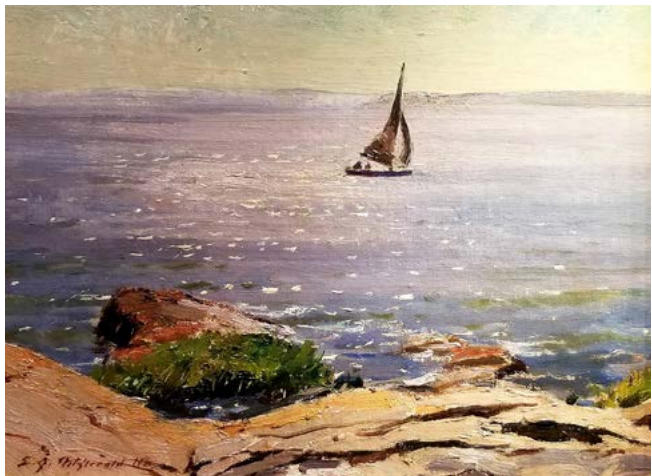
REPRESENTING A MAJOR COLLECTION



Also exhibiting at
The New York Botanical Gardens, Objects of Desire, Rhinebeck,
Hamptons, Antiques in Manchester

CONNECTICUT SPRING ANTIQUES SHOW

Special Show Section



Edmond James Fitzgerald, N.A. (1912-1989)
“Off the Coast.” Signed lower left. O/B, 9” x 12”
31 Nichols Road, Cohasset, MA 02025 * 781-383-3210
info@blueheronFA.com * www.blueheronFA.com

Jane F. Wargo



Pleasing Geometric Hooked and Braided Rug; early 20th c.;
mounted on board. Measures 38” x 39”
Wallingford, CT (203) 265-0342
jwfwargo@comcast.net



STEPHEN & CAROL HUBER, Old Saybrook, Conn. — The highly educated young ladies attending academies in the early Nineteenth Century were known to have studied Shakespeare’s plays and Greek mythology as well as a myriad of other disciplines. According to Shakespeare’s play, Cymbeline was the Roman Empire’s subservient king of Britain. The frame and glass are classic John Doggett who is document to have created frames and glass for Mrs Saunders’ and Miss Beach’s Academy. This is a silk and paint on silk, 23½ by 29½ inches framed. See Betty Ring’s *Girlhood Embroidery* (page 98) for another almost identical Cymbeline silk embroidery.

CONNECTICUT SPRING ANTIQUES SHOW
March 24-25, 2018
The Hartford Armory
360 Broad Street, Hartford, CT



NATHAN LIVERANT AND SON, Colchester, Conn. — Paint-decorated fire bucket from the Protection Volunteer Fire Company, painted leather with brass handle rings, dated 1761, made for “P. Rice” lower Manhattan, Fulton and Ann Streets, New York City, 1780–1840.



JEFFREY TILLOU ANTIQUES, Litchfield, Conn. — Carved Chippendale side chair, mahogany, poplar, slip-seat frame, New York, 1765–75. Few knee returns replaced, otherwise in fine condition with minor imperfections. The leather is old but not original. This rare example is embellished with three carved shells on the crest rail and knees. The carved diamond form and scroll pattern splat and the gadrooned front rail are other features found on New York chairs from the rococo period.



Salt Box Antiques

Sugarloaf, PA tel 570-788-1716

18th c. New England table
in original condition.

Special Show Section

CONNECTICUT SPRING ANTIQUES SHOW



GARVEY RITA ART & ANTIQUES, West Hartford, Conn. — A cast iron lamb, 14 by 6 by 4 inches, Nineteenth Century American.



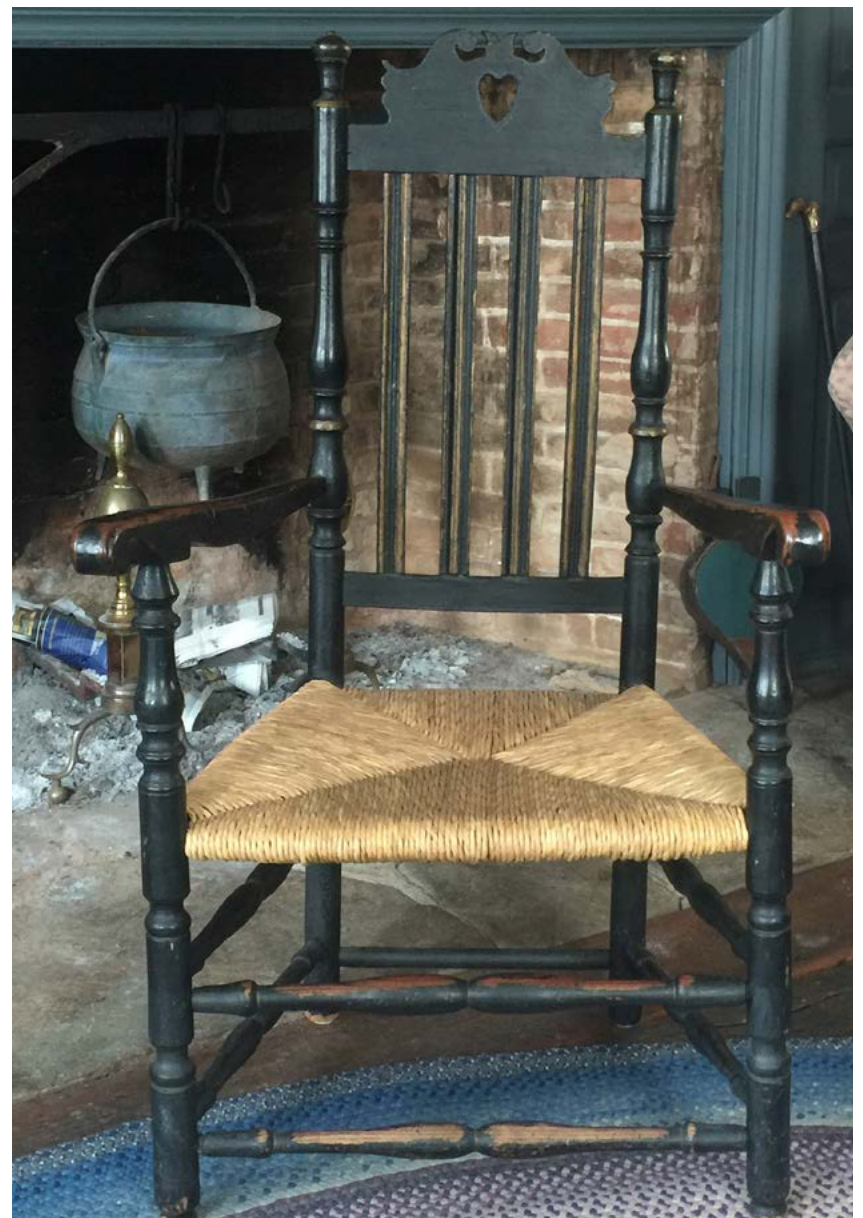
ROBERTO FREITAS, Stonington, Conn. — Mission-style oak bookcase, Arts and Crafts Movement, circa 1920, 55½ inches tall, 60 inches wide and 13¼ inches deep.



STEPHEN-DOUGLAS ANTIQUES, Bellows Falls, Vt. — Rare Eighteenth Century Connecticut Queen Anne candlestand with unusual scalloped-shaped top with dark, early old finish.



LEWIS SCRANTON, Killingworth, Conn. — Redware storage jar from Norwalk, Conn., manganese decoration, mint condition.



A rare Heart and Crown chair made in the Durand woodworking shop in Milford, Ct. about 1750. Excellent condition, slightly worn feet but still 16½" seat height. Old black with gilt highlights.

MARK & MARJORIE ALLEN

Furniture & Accessories of the 17th, 18th & early 19th centuries



A Bristol Delft blue dash charger depicting William III on a rearing horse.

36 Endicott Street E, Unit 13/14, Laconia, NH 03246

603-644-8989

www.antiquedelft.com

e-mail: mandmallen@antiquedelft.com

Derik Pulito

18th & 19th Century Country Americana



KENSINGTON, CT
(860) 828-0588

By Appointment Only

CONNECTICUT SPRING ANTIQUES SHOW

Special Show Section

Connecticut Spring Antiques Show

March 24 & 25, 2018

DEALER LISTING

Mark and Marjorie Allen

PO Box 5013
Weir Beach, NH 03247
603-644-8989
www.antiquedelft.com

Artemis Gallery

Wallace Road
North Salem, NY 10560
914-669-5971
www.ArtemisAntiques.com

Axtell Antiques

1 River Street
Deposit, NY 13754
607-467-4444
www.axtellantiques.com

**Scott Bassoff &
Sandy Jacobs**

99 Rockland Street
Swampscott, MA 01907
www.sandyjacobsantiques.com

Blue Heron Fine Arts

31 Nichols Road
Cohasset, MA 02025
781-383-3210
www.blueheronfa.com

**Jeff R. Bridgman
American Antiques**

14A Franklin Church Road
Dillsburg, PA 17019
717-502-1281
www.jeffbridgman.com

Hollis Brodrick

PO Box 30
Portsmouth, NH 03802
603-828-6158

**Martin Chasin
Fine Arts LLC**

1125 Church Hill Road
Fairfield, CT 06825
203-374-5987
www.martinchasinfineartsllc.com

John Chaski

32239 Nassau Road
Lewes, DE 19958
302-448-6492
www.johnchaski.com

Collecting The Past

11973 Watsonseed Farm Road
Whitakers, NC 27891

The Cooley Gallery

25 Lyme Street
Old Lyme, CT 06371
978-465-1090
www.cooleygallery.com

Kirtland Crump

1225 Whirlwind Hill Road
Wallingford, CT 06492
203-245-8753
www.crumpclocks.com

Dover House Antiques

3700 Lexington Road
Louisville, KY 40207
502-899-1699

Peter H. Eaton Antiques Inc.

24 Parker Street
Newbury, MA 01951
978-465-2754
www.PeterEaton.com

Firehouse Antiques

PO Box 144
Galena, MD 21631
410-648-5639
www.galenaantiquesistrict.com

Roberto Freitas

156 Water Street
Stonington, CT 06378
860-535-1797
www.robertofreitas.com

**Garvey Rita Art
and Antiques**

322 Park Road
West Hartford, CT 06119
860- 233-1730
www.garveyrita.com

David Good Antiques

7887 State Rtd. 177
Camden, OH 45311
513-796-2693

The Hanebergs Antiques

5 Boston Post Road
East Lyme, CT 06333
860-437-1583
www.hanebergsantiques.com

Hanes and Ruskin

PO Box 212
Old Lyme, CT 06371
860-434-1800
www.hanesandruskin.com

Samuel Herrup

PO Box 248
Sheffield, MA 01257
413-229-0424
www.samuelherrup.com

Stephen and Carol Huber

40 Ferry Road
Old Saybrook, CT 06475
860-388-6809
www.AntiqueSamplers.com

Jewett and Berdan

15 Hopkins Hill Road
Newcastle, ME 04503
207-563-3682
www.jewettberdan.com

James Kilvington

PO Box 892
Dover, DE 19903
302-734-9124

Donna Kmetz

1 Common Street
Douglas, MA 01516
508-476-2214
www.donnakmetz.com

Leatherwood Antiques

PO Box 1676
Sandwich, MA 02563
508-420-1433
www.leatherwoodantiques.com

**Nathan Liverant
and Son Antiques**

168 South Main Street
PO Box 103
Colchester, CT 06415
860-537-2409
www.liverantantiques.com

Mad River Antiques

13 Gloucester Lane
North Granby, CT 06060
860-653-5733
www.madriverantiques.com

Paulette and Hilary Nolan

PO Box 583
Falmouth, MA 02541
508-548-0127

Daniel and Karen Olson

1445 Rt 300
Newburgh, NY 12550
845-564-0572
www.olsonantiques.com

Randi Ona

20 Osborne Terrace
Wayne, NJ 07470
973-495-3707
www.onaantiques.com

Oriental Rugs Ltd.

By Appointment • Niantic, CT
Mailing
PO Box 814, Old Lyme, CT 06371
860-434-1167
www.orientalrugsLtd.com

Port N' Starboard Gallery

53 Falmouth Road
Falmouth, ME 04105
207-781-4214
www.portnstarboardgallery.com

Derik Pulito Antiques

381 Percival Avenue
Kensington, CT 06037
860-828-0588

**Dennis Raleigh/
Phyllis Sommer**

PO Box 745
Wiscasset, ME 04578
207 805 4564
www.dennisraleighantiques.com

RGL Antiques

18 Shy Creek Road
Pittstown, NJ 08867
908-930-5615
www.rglantiques.com

John Rogers LLC

31 Dixie Lane
New London, NH 03257

Saltbox Antiques

769 W. Butler Drive
Sugarloaf, PA 78249
570-956-6941

Thomas Schwenke

50 Main Street North
Woodbury, CT 06798
203-266-0303
www.schwenke.com

W. M. Schwind, Jr

51 East Main Street
Yarmouth, ME 04096
207-846-9458
www.schwind-antiques.com

Lewis Scranton

38 Fire Tower Road
Killingworth, CT 06419
860-663-1060

Grace and Elliott Snyder

Box 598
S. Egremont, MA 01258
413-528-3581
www.elliottandgracesnyder.com

**Stephen - Douglas
Antiques**

PO Box 27
Rockingham, VT 05101
802-463-4296
www.stevenstillantiques

Stiles House Antiques

30 Hollow Road
Woodbury, CT 06798
203-405-6357
www.stileshouseantiques.com

Steven Still

1717 South Colebrook Road
Manheim, PA 17545
717-459-3595
www.stevenstillantiques.com

Thistlethwaite Americana

261 Duke Street
Alexandria, VA 22314
270-404-1558
www.Thistleamericana.com

Jeffrey Tillou Antiques

39 West Street
Litchfield, CT 06759
860-567-9693
www.tillouantiques.com

Village Braider

22 Fathom Road
Plymouth, MA 02360
508-746-9625
www.villagebraider.com

Jane Wargo

3 Springbrook Drive
Wallingford, CT 06492
203-265-0342
www.janefwargoantiques.com

Warren Antiques

14 Rowledge Park Road
Sandy Hook, CT 06402
203-984-6174
www.warrenantiques.com

**Paul and Karen
Wendhiser**

PO Box 155
Ellington, CT 06029
860-872-9600
www.Wendhiserantiques.com

Bob Withington & Co.

207 Market Street
Portsmouth, NH 03801
603-498-4778
www.withingtonandcompanyantiques.com

Bette & Melvyn Wolf

1196 Shady Hill CT
Flint, MI 48532
810-252-2726
www.wolfpewter.com

Special Show Section

CONNECTICUT SPRING ANTIQUES SHOW

PAUL & KAREN WENDHISER

P.O. Box 155 ~ Ellington, CT 06029
860-872-9600

Large 25½" turned bowl in original oyster white paint. Early 19th c. Bailey thinks it's great!



DANIEL AND KAREN OLSON — Oversized New England blown glass whale oil lantern, circa 1830.



PETER H. EATON, Newbury, Mass. — A rare, perhaps unique, transitional side chair with unusual crest rail and back splat, exceptionally bold stretchers and Spanish feet. The shape of the crest rail and splat, the turnings on the front legs and the attenuated rake to the back are unknown on other chairs making it difficult to attribute it to a specific area. The shape of the splat, however, bears close resemblance to that seen in several chairs attributed to the Dunlap family of New Hampshire. Maple and birch, in an old stained finish. A distinct rarity with great appeal. It is of the third quarter of the Eighteenth Century, 43½ inches tall, 18-inch seat height.



RANDI ONA, Wayne, N.J. — Early miniature bowl in wonderful original painted surface.



PAUL & KAREN WENDHISER, Ellington, Conn. — Mexican sterling and azurite large heavy link bracelet, 5.4 ounces, marked TONO, TC-170, post 1979. Also a Margot de Taxco sterling and azurite link bracelet with scroll design, marked Eagle 16, Mexico, circa 1948.

CONNECTICUT SPRING ANTIQUES SHOW

March 24-25, 2018

The Hartford Armory, 360 Broad Street, Hartford, CT



Leatherwood Antiques~

www.leatherwoodantiques.com 508-420-1433

