



WINTER ANTIQUES SHOW

SPECIAL SHOW SECTION



WINTER ANTIQUES SHOW

SAVE THE DATE
JANUARY 19-28, 2018

OPENING NIGHT PARTY
JANUARY 18

A BENEFIT FOR
EAST SIDE HOUSE SETTLEMENT

winterantiquesshow.com



PRESENTING SPONSOR
CHUBB®

LOAN EXHIBITION
*Collecting for the Commonwealth/Preserving for the Nation:
Celebrating a Century of Art Patronage, 1919-2018*
Virginia Museum of Fine Arts

Park Avenue Armory
New York City

Spanish Marriage Casket (detail), c. 1885. Peter Finer

A LA VIEILLE RUSSIE • ADELSON GALLERIES, INC. • ALEXANDER GALLERY • MICHAEL ALTMAN FINE ART • APTER-FREDERICKS • ARADER GALLERIES
ARONSON OF AMSTERDAM • MICHELE BEINY, INC. • H. BLAIRMAN & SONS LTD • JONATHAN BOOS • BOWMAN SCULPTURE • RALPH M. CHAIT GALLERIES, INC.
COHEN & COHEN • PHILIP COLLECK, LTD. • THOMAS COLVILLE FINE ART • THOMAS COULBORN & SONS LTD. • COVE LANDING • DANIEL CROUCH RARE BOOKS
DIDIER LTD • GEOFFREY DINER GALLERY, INC. • DONZELLA • GALERIE ANNE-SOPHIE DUVAL • PETER H. EATON AND JOAN R. BROWNSTEIN • PETER FETTERMAN GALLERY
PETER FINER • GEMINI ANTIQUES LTD. • MICHAEL GOEDHUIS • BERNARD GOLDBERG FINE ARTS, LLC • THOMAS HENEAGE ART BOOKS • HILL-STONE, INC.
HIRSCHL & ADLER GALLERIES • HIRSCHL & ADLER MODERN • STEPHEN & CAROL HUBER • HYDE PARK ANTIQUES, LTD. • JAMES INFANTE
BARBARA ISRAEL GARDEN ANTIQUES • JASON JACQUES GALLERY • KENTSHIRE • KESHISHIAN • KELLY KINZLE • LEBRETON • BERNARD AND S. DEAN LEVY INC.
NATHAN LIVERANT AND SON, LLC • LOBEL MODERN • LOST CITY ARTS • MACKLOWE GALLERY, LTD • JOAN B MIRVISS LTD • LILLIAN NASSAU LLC
THE OLD PRINT SHOP, INC. • OLDE HOPE ANTIQUES, INC. • PETER PAP ORIENTAL RUGS, INC. • GERALD PETERS GALLERY • RONALD PHILLIPS LTD
FRANK & BARBARA POLLACK AMERICAN ANTIQUES & ART • JAMES ROBINSON, INC. • DAVID A. SCHORSCH-EILEEN M. SMILES AMERICAN ANTIQUES
SCHWARZ GALLERY • STEPHEN SCORE • S.J. SHRUBSOLE CORPORATION • ELLE SHUSHAN • ROBERT SIMON FINE ART • SPENCER MARKS • GALERIE ST. ETIENNE
TAMBARAN • CAROLLE THIBAUT-POMERANTZ • THROCKMORTON FINE ART, INC. • TILLOU GALLERY • RUPERT WACE ANCIENT ART • ROBERT YOUNG ANTIQUES
CATHERINE SWEENEY SINGER, EXECUTIVE DIRECTOR MICHAEL DIAZ-GRIFFITH, ASSOCIATE EXECUTIVE DIRECTOR

winterantiquesshow.com



WINTER ANTIQUES SHOW

SPECIAL SHOW SECTION





H. BLAIRMAN & SONS LTD, London — This fruit dish is designed by Gordon Russell (1892–1980), manufactured by the Russell Workshops Ltd, English (Broadway), 1926. Literature: Ray Leigh & Trevor Chinn, *Drawn to Design, The Work of Sir Gordon Russell CBE, MC, RDI, the celebrated Twentieth Century furniture designer*, 2013, page 72. For the design: Design no 547 is a fruit dish gilding metal of oxidized copper / 11¾ diameter by 8¼ inches high. *The Studio Yearbook*, 1927 (for the model).

SAVE THE DATE
January 19-28



JEFFREY TILLOU ANTIQUES, Litchfield, Conn. — Large turned burl bowl, American, early Nineteenth Century. It is ash, having a pronounced rim and measures 6¼ inches high, 16½ inches by 17 inches.



JOAN B. MIRVISS, LTD, New York City — Katsumata Chieko (b 1950), “Akoda: Pumpkin,” 2017, stoneware with matte glazes and measuring 14¾ by 16½ by 17-3/8 inches.
—Richard Goodbody photo



HIRSCHL & ADLER GALLERIES, New York City — George Henry Hall (1825–1913), “Catskill Mountain Laurels,” oil on canvas, 29½ by 20 inches. It is signed, dated and inscribed lower left: Geo. Henry Hall / Palenville 1888.

OPENING NIGHT
PARTY
January 18, 2018

As of February 15, 2018
Hirschl & Adler Galleries
Hirschl & Adler Modern

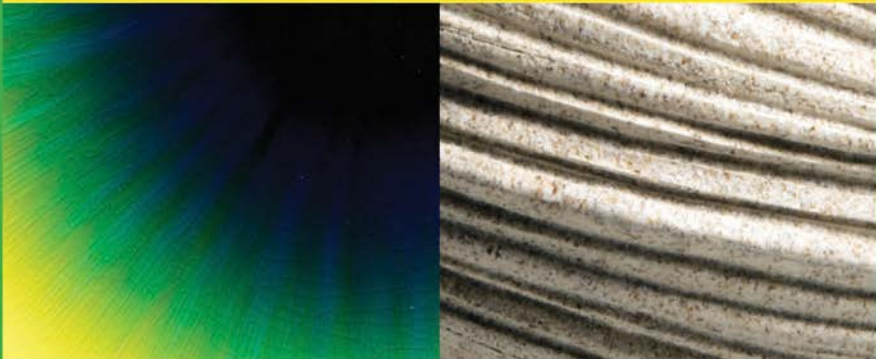
WILL BE LOCATED AT



The Fuller Building
41 East 57th Street, 9th Floor
New York, NY 10022
212-535-8810



Japanese Ceramics: 1960 - Present
Function vs Sculpture



JOAN B MIRVISS LTD
JAPANESE ART Antique - Contemporary
39 East 78th Street, 4th Floor | New York NY 10075
Telephone 212 799 4021 | www.mirviss.com



WINTER ANTIQUES SHOW

SPECIAL SHOW SECTION



Stephen Score inc.

Boston, MA stephenscoreantiques@gmail.com

JANUARY 19-28
PARK AVENUE ARMORY
PARK AVENUE
AT 67TH STREET
NEW YORK CITY

WINTER 
ANTIQUES
SHOW

BOOTH 1

Painted Pine Sea Gull
Early 20th Century, Maine
Wingspan 45"





WINTER ANTIQUES SHOW

SPECIAL SHOW SECTION





Portrait of Pug:
Oils on NY State Artist Board
Dated: "Jan 1895 /painted" (on reverse)
27 ½ x 21 ½ (framed)



Extraordinary Flame-stitch Wallet:
African-American Man holding tray with wine glass
African-American Woman holding brass hot water pot and teapot
About 1760; 3 ½" x 5 ½"; Lincoln Family, Harwich, MA

Stephen Score inc.

Boston, MA stephenscoreantiques@gmail.com



WINTER ANTIQUES SHOW

SPECIAL SHOW SECTION



Stephen Score inc.

Boston, MA stephenscoreantiques@gmail.com

Mechanicks Sign:
Wonderful, Double-sided image
American, about 1820
Oil on Pine; approximately 61" x 32 1/2"



WINTER ANTIQUES SHOW

SPECIAL SHOW SECTION





H. BLAIRMAN & SONS LTD, London — Coupe, the bowl by Auguste Delaherche (1894–1940). The mounts by Frederic Boucheron (firm active 1858–present), French (Paris), circa 1894–97. Provenance: Christie’s, *Studio Pottery Art Nouveau and Cameo Glass*, June 3, 1975, lot 27, Lorraine Norre, Paris, late 1990s; H. Blairman & Sons; private collections. Literature: The coupe is recorded in the Boucheron archive in 1897 as: “coupe en gres (Delaherche) pieds et bords en feuillages, et anses tetes de loups.” The archive records another example with a single handle.



JOAN B. MIRVISS, LTD, New York City — Tokuda Yasokichi III (1933–2009), round platter with Kutani glazes, 1881, glazed stoneware, 17-7/8-inch-diameter, 3 inches high. —Richard Goodbody photo

SAVE THE DATE

January 19-28



JEFFREY TILLOU ANTIQUES, Litchfield, Conn. — Architectural finial and directional, American, possibly by Fiske & Company, New York, circa 1890–1910. It is of copper, iron and zinc, measuring 99¾ inches high by 39½ inches (directionals).



JOAN B. MIRVISS, LTD, New York City — Futamura Yoshimi (b 1959), “Black Hole,” 2015, stoneware and porcelain slip, 14-5/8 by 17 by 12¾ inches. —Richard Goodbody photo



H. BLAIRMAN & SONS LTD, London — “Bear,” modeled by Loewer, manufactured by Pierre-Adrien Dalpayrat (1844–1910), French (Bourg-la-Reine), circa 1900. A similar model donated by the Dalpayrat family is in the collection of the Musee National Adrein Dubouche, Limoges.



BARBARA ISRAEL GARDEN ANTIQUES



A pair of impressive terra-cotta griffins with forepaws resting on shields, marked “VIREBENT FRES [Frères]/TOULOUSE/PROPRIÉTÉ”, French, ca. 1860. 44 ins. high, 44 ins. long, 24 ins. deep.

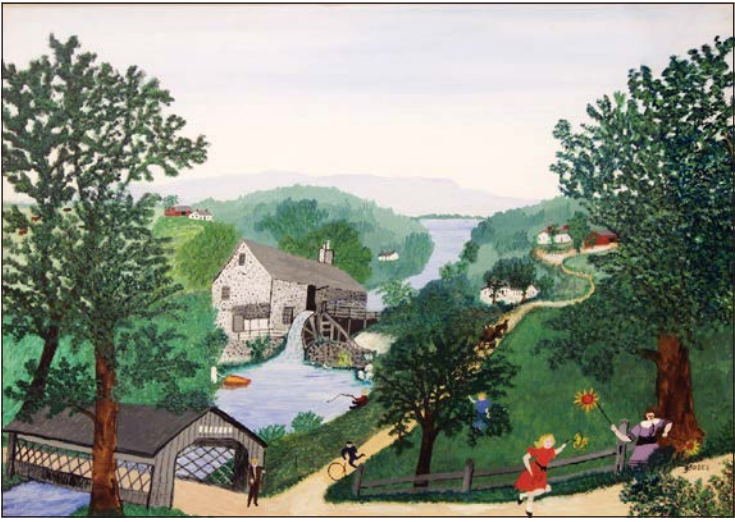
Barbara Israel Garden Antiques specializes in the finest antique garden ornament and furniture from Europe and America. Call to inquire about our on-site ornament placement and design services.

By Appointment • Katonah, NY • 212-744-6281
www.barbaraisrael.com

WINTER ANTIQUES SHOW

SPECIAL SHOW SECTION

SPENCER MARKS, LTD, Southampton, Mass. — Robert R. Jarvie sterling silver international Clydesdale Prize Trophy, Chicago, circa 1913. Robert Jarvie was one of the most avant garde American silversmiths of the Arts and Crafts era. This trophy displays his bold sense of proportion, and the remarkable decoration closely ties the piece to the “Prairie School” architecture popularized by Frank Lloyd Wright. This international senior championship prize was won by Fyvie Baron, the most famous and highly decorated Clydesdale horse of his era, and descended in the family of his owners, the Conynghams. The Union Stock Yards in Chicago, sponsor of these competitions, was Jarvie’s best client and many of his most important works are trophies.



GALERIE ST ETIENNE, New York City — Anna Mary Robertson “Grandma” Moses, “The Oaks,” 1954, oil on pressed wood, signed lower right. It measures 18 by 24 inches (45.7 by 61 cm). Kallir 1112. ©Grandma Moses Properties Co., New York



GALERIE ST ETIENNE, New York City — Anna Mary Robertson “Grandma” Moses, “Busy Time,” 1959, oil on pressed wood, signed lower right, measuring 16 by 24 inches (40.6 by 61 cm). Kallir 1429. ©Grandma Moses Properties Co., New York.



HIRSCHL & ADLER GALLERIES, New York City — Thomas Birch (1779–1851), “View of Philadelphia from the Delaware River,” about 1835–40, an oil on canvas measuring 24 by 35 inches.



*Carved Eagle with Outstretched
Wings Perched on Rocks. American.
Probably Pennsylvania, early 19th c.
Exceptionally well carved pine with
painted and gilt surface. Similar details
are found on carvings executed by
William Rush, Philadelphia, PA.
20”h; 36 ½”w (wing span); 26”d.*





WINTER ANTIQUES SHOW

SPECIAL SHOW SECTION





BARBARA ISRAEL GARDEN ANTIQUES, Katonah, N.Y. — A very rare Coade stone figure of Autumn, marked “Coade, London, 1791,” English, 53 inches high. —Bree Moon photo

SPENCER MARKS, LTD, Southampton, Mass. — Jean Despres’s silvered-metal candelabra, Avalon, France, circa 1950s. Jean Despres is widely acknowledged as France’s most important mid-Twentieth Century silversmith. These rare architectural candelabra show his mastery of geometric Art Deco design, while the bold hammered surfaces precurse the brutalist designs of the 1960s and 1970s.



WinterAntiquesShow.com




STEPHEN & CAROL HUBER, Old Saybrook, Conn. — Wrought by Cynthia Williams, 1803, at the Mary Balch School in Providence, this stitched shaded urn and basket arrangement is found on several other needlework pictures from the school. The floral garland with bowtie ribbon is similar to a design worked at the Misses Patten’s School in Hartford, Conn. The stitched inscription is characteristic of the Balch School. It is silk and chenille on silk, measuring 25½ by 26½ inches sight, 29½ by 30¼ inches framed. This piece is illustrated in *Let Virtue Be A Guide To Thee*, Betty Ring, page 165.




BARBARA ISRAEL GARDEN ANTIQUES, Katonah, N.Y. — A fine pair of bronze flamingos, English, early Twentieth Century, 48 inches high. —Bree Moon photo

STEPHEN & CAROL
HUBER



America’s Preeminent Source for Girlhood Embroideries




Rebecca J. Lund of Dunstable, NH was the youngest of eleven children and worked this needlework sampler at about age fourteen c.1822. Framed size is 28 ¼’ X 26 ¼”.

**FORTY FERRY ROAD, OLD SAYBROOK
CONNECTICUT 06475**
Tel 860-388-6809 • Hubers@AntiqueSamplers.com
www.AntiqueSamplers.com


Spencer Marks

Fine Antique & 20th Century Silver


www.spencermarks.com



Tiffany & Co, 1870-75
Remarkable antique sterling silver table garniture sold at Tiffany’s Union Square store, height: 13.75 inches.



Spencer Gordon, III ★ Mark F. McHugh
P.O. Box 330, Southampton, MA 01073 (413) 527-7344
Member: Art and Antique Dealer’s League of America, CINOA, ADA





WINTER ANTIQUES SHOW

SPECIAL SHOW SECTION

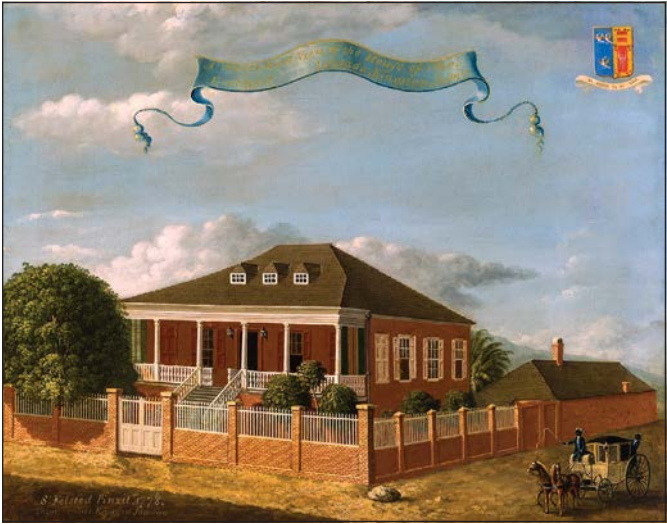


STEPHEN & CAROL HUBER, Old Saybrook, Conn. — “Columbus Landing in America” by Sarah K. Thorne, Boston, circa 1800. This rare depiction of Columbus is one of only four known. They are all based on “fake news” and “politically incorrect,” so it will be interesting to see if *Antiques and The Arts Weekly* allows this thing to be published. The other three are either known to be from, or attributed to Susanna Rowson’s Academy in Boston. The scene is derived from “The Landing of Christopher Columbus,” engraved by David Edwin (1776–1841) after a painting by Edward Savage published in the year 1800. Inscribed on the glass: Embroidered By Sarah K. Thorne Columbus Landing In America. This work is silk and watercolor on silk, measuring 31½ by 25½ framed.

Park Avenue Armory
New York City

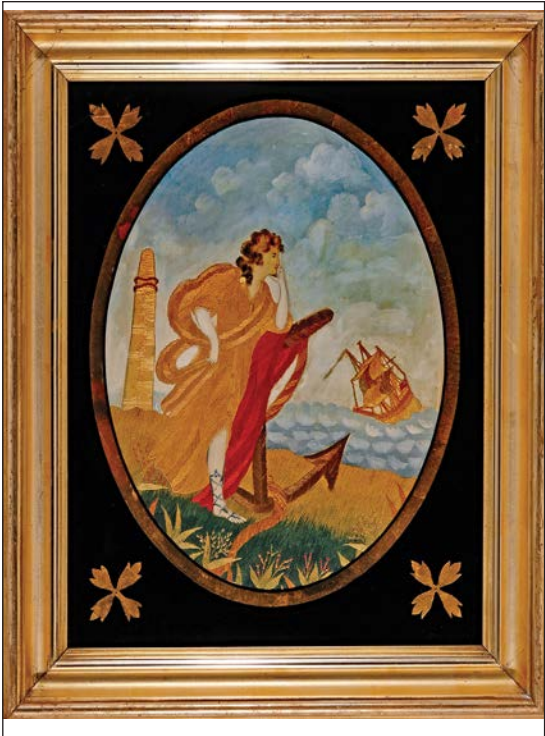


SAVE THE DATE
January 19-28



HIRSCHL & ADLER GALLERIES, New York City — Samuel Felsted (1743–1802), “A North-East View of the House of Mr Emanuel Lousada, Kingston, Jamaica,” oil on canvas measuring 24¼ by 31-7/8 inches. It is signed, dated and inscribed (at lower left): S: Felsted Pinxit. 1778./County (sic) House. Kingston. Jamaica.

GALERIE ST ETIENNE, New York City — Leonard Baskin, “A Cheyenne Woman in the Robes of a Secret Society,” 1973. Lithograph in three colors on off-white wove paper. Signed and inscribed “early proof” lower left. It measures 25 by 34½ inches (63.5 by 87.6 cm). Proof outside the edition of 100 impressions. Fern/O’Sullivan 638.



STEPHEN & CAROL HUBER, Old Saybrook, Conn. — “Hope,” anonymous, probably Folwell School, Philadelphia, circa 1810. Hope was a popular theme illustrated in many forms of early Nineteenth Century decorative arts. This charming silk embroidery seems to have caught “Hope” daydreaming instead of paying attention to the floundering ship. Let’s hope it turned out okay. This piece is of silk and watercolor on silk and measures 19½ by 16½ inches framed.

H. BLAIRMAN & SONS LTD

PO Box 6374
London W1A 3UR
tel: +44 (0) 207 493 0444
cell: +1 917 297 2167

email: blairman@blairman.co.uk
www.blairman.co.uk

by appointment: Mayfair, London



DINING TABLE

Designed by Gordon Russell (1892–1980) Manufactured in the Gordon Russell workshop English (Broadway), circa 1925

PROVENANCE:

Probably supplied to Terra Nova School, Jodrell Bank, Cheshire, and by descent through its headmaster; sold Frank Marshall & Co., Knutsford, 6 July 2011, lot 821; H. Blairman & Sons, 2010; private collection

LITERATURE:

Jeremy Myerson, *Gordon Russell: Designer of Furniture*, 1992, p. 39 (for a view of Gordon Russell’s showroom at Lygon Cottage showing a version of the present table)



WINTER ANTIQUES SHOW

SPECIAL SHOW SECTION





JEFFREY TILLOU ANTIQUES, Litchfield, Conn. — Portrait of a young boy holding a hoop and a hat, American School, possibly by Joseph Goodhue Chandler, New York, unsigned, circa 1840. It is a 43½ by 34½ framed oil on canvas.



BARBARA ISRAEL GARDEN ANTIQUES, Katonah, N.Y. — A rare stoneware figure representing the Applied Arts, stamped on the base “Villeroy & Boch” (Wallerfangen, Mannheim), Germany, circa 1900, 63½ inches high. —Bree Moon photo



GALERIE ST ETIENNE, New York City — Leonard Baskin, “Ever-Swollen Death,” 1994, ink on very heavy white Arches watercolor paper, signed lower right and dated lower left. Signed, titled and dated verso, 30¼ by 32-5/8 inches (76.8 by 57.5 cm).



H. BLAIRMEN & SONS LTD, London — Pair of wall lights, designed by William White (1825–1900), English, circa 1870. Provenance: L. Clement Francis, Quay Hall, Cambridgeshire, and by descent.

BARBARA ISRAEL GARDEN ANTIQUES, Katonah, N.Y. — A rare pair of zinc short-haired dogs with studded collars, marked “J.W. Fiske/26, 28 Park Place/New York,” American, circa 1874–92, measuring 46 inches high. —Bree Moon photo



GALERIE ST. ETIENNE

Representing the Estates of Grandma Moses and Leonard Baskin

Exhibiting at
the Winter Antiques Show
Park Avenue Armory
at 66th Street,
New York City
January 19–28
Booth 65

24 West 57th Street
New York, N.Y. 10019
212-245-6734
gallery@gseart.com
www.gseart.com



Anna Mary Robertson (“Grandma”) Moses. **A Blizzard**. 1958.
Oil on pressed wood. Signed, lower right. 16” x 24” (40.7 x 60 cm). Kallir 1343.