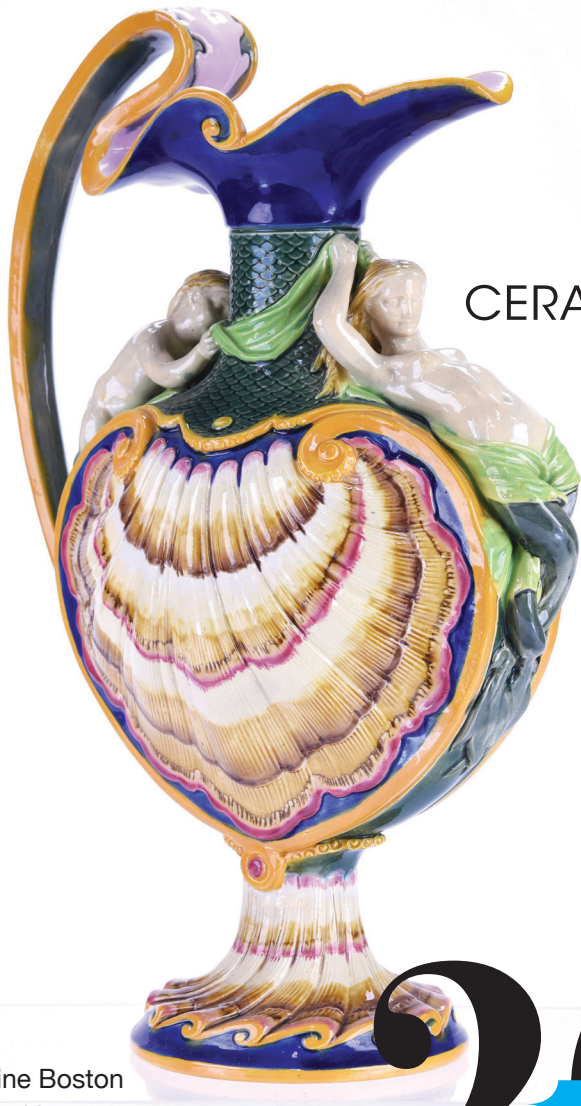


The New York CERAMICS & GLASS FAIR 2018

Special Show Section



New York
CERAMICS & GLASS FAIR



Martine Boston
Antiques



Earle D. Vandekar
of Knightsbridge

2018
JANUARY 18 - 21
PREVIEW JANUARY 17



Cliff Lee



Vetro Vero

2018 EXHIBITORS

Elise Abrams Antiques, USA
Antoinette's Heirlooms, UK
Garry Atkins, UK
Martine Boston Antiques, IE
Martyn Edgell Antiques Ltd., UK
Jill Fenichell Inc., USA
Ferrin Contemporary, USA
Katherine Houston Porcelain, USA
Leo Kaplan Ltd., USA

KPM Art & Antiques LLC., USA
Lacoste Gallery, USA
Polly Latham Asian Art Inc., USA
Cliff Lee Porcelain, USA
Hideaki Miyamura, USA
Moylan / Smelkinson, USA
Pascoe Gallery, USA
Polka Dot Antiques, USA
PRECIOSA / Berkana USA, CZ & USA
Martha Rieger Ceramics, IL

Ian Simmonds, USA
Philip Suval Inc., USA
Mariko Swisher Ceramics, USA
Earle D. Vandekar of Knightsbridge, USA
Vetro Vero, USA
Michael Wainwright, USA
Maria & Peter Warren Antiques, USA
Mark J. West, UK
Lynda Willauer Antiques, USA

Bohemian National Hall • 321 East 73rd Street • New York, NY 10021 • (929) 265-2850
nyceramicsandglass.com

The New York CERAMICS & GLASS FAIR 2018

Special Show Section

POLKA DOT ANTIQUES, LLC, Waccabuc, N.Y. — Pair of Wedgwood Aesthetic Movement outside decorated plaque, “Romeo & Juliet,” 1881, signed by J.R. Hewitt, hand painted portraits on a textured gilt ground, impressed mark of Wedgwood, signed J.R. Hewitt 1991, applied paper labels, 15-inch diameter.



POLLY LATHAM ASIAN ART, Boston — Impressive Chinese export famille rose 14-inch coffee pot, circa 1750.



POLKA DOT ANTIQUES, LLC, Waccabuc, N.Y. — Rare Pilkington's Royal Lancastrian pottery tile, “Daffodil,” 1900–01, designed by Walter Crane, press molded, back molded mark P, 6 by 6 inches.

POLKA DOT ANTIQUES, LLC, Waccabuc, N.Y. — Tin-glazed earthenware flowerpot, circa 1760s, probably London, of square form tapering to the base, painted with chinoiserie landscape scenes, 4½ inches high.



POLKA DOT ANTIQUES, LLC, Waccabuc, N.Y. — South Staffordshire (Bilston) enameled box and cover, 1750–80, rectangular form with pre-embossed flowers and foliage in polychrome enamels with small gilt flowers and foliage, 2½ by 2 inches.



Polly Latham

Asian Art

Specializing in Fine Chinese Export Porcelain

Always Interested in Acquiring Fine Pieces or Entire Collections

531 Albany Street, Boston, MA 02118
617.723.7009 | 617.823.5796

www.pollylatham.com

An especially fine platter from a Chinese Export dinner service made for Governor Dewitt Clinton of New York (1769-1828).

The New York CERAMICS & GLASS FAIR 2018 Special Show Section



POLLY LATHAM ASIAN ART, Boston — Chinese export American market teapot with ship decoration with a rare view of the vessel firing its cannons, circa 1800.



POLLY LATHAM ASIAN ART, Boston — Rare Japanese export porcelain VOC charger made for the Dutch East India Company, circa 1700.

Ceramics & Glass Fair Welcomes You

NEW YORK CITY — The New York Ceramics & Glass Fair, specializing in ceramics, pottery and glass from the Seventeenth through the Twenty-First Centuries, celebrates its 19th anniversary, January 18-21, at the historic Bohemian National Hall, 321 East 73rd Street.

Set on two floors of the Bohemian National Hall, the fair features 30 top-tier vetted galleries, private dealers and artists from the United States, England, Europe, Israel and Asia.

The show opens on Thursday, January 18, and runs through Sunday, January 21. Hours are Thursday to Saturday, 11 am to 7 pm, and Sunday, 11 am to 4 pm. The opening night preview on Wednesday, January 17, 5 to 8:30 pm, marks the start of Americana Week in New York.

The ticket price is \$20 per person, and can be used throughout the duration of the fair and includes admission to lectures on a first-come basis.

During excavations on the site of the new Museum of the American Revolution in Philadelphia, archaeologists from Commonwealth Heritage Group recovered nearly 85,000 artifacts. Among these was an assemblage of locally made slipware dating to the middle of the Eighteenth Century. A selection of these ceramics will be revealed at this year's New York Ceramics and Glass Fair in the exhibition "Buried Treasure: New Discoveries in Philadelphia Slipware from the Collection of the Museum of the American Revolution." A lecture by archaeologist Deborah Miller will discuss the significance of the discovery in light of their contribution to Philadelphia's ceramic history.

"Revive, Remix, Respond: Contemporary Ceramic Artists at The New York Ceramics & Glass Fair and The Frick Pittsburgh" is organized by Dawn Reid Brean, associate curator of decorative arts at The Frick Pittsburgh, with Leslie Ferrin of Ferrin Contemporary. The museum has invited artists to submit work that is inspired by, responds to or relates to historic ceramics in The Frick Pittsburgh's permanent collection. Selected works will be presented as a special exhibition at the fair, and Dawn Brean give present an illustrated lecture and discussion with participating artists on Friday, January 19, at 2 pm.

The New York Ceramics & Glass Fair is co-produced by Meg Wendy of MCG Events and Elizabeth J. Lees Events.

For additional information, www.nyceramicsandglass.com.

Polka Dot Antiques

18th & 19th Century British Pottery & British Art Pottery

914-548-8708

rhpwalker@gmail.com



Rare Staffordshire Agate Ware Pecten Shell Teapot and Cover, 1750s, 5 1/2" high.



Large Doulton Lambeth Art Nouveau Stoneware Vase, 1891-1902, probably by Hannah B. Barlow, impressed mark of a rosette and England, incised monograms, 26" high.



Staffordshire Lead-Glazed Creamware Tea Canister, 1750/60s, probably Thomas Whieldon, 4 1/2" high.



Rare Studio Pottery Figure Group by Molly Mitchell-Smith, 1939, incised mark, Molly Mitchell-Smith, London, England, 1939 and paper label 'Arts & Crafts exhibition label, USA & Canada,' 8" high.

