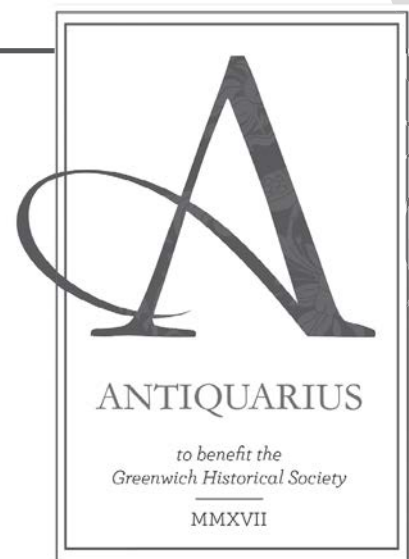


# Greenwich WINTER ANTIQUES SHOW

SPECIAL SHOW SECTION

## Greenwich Winter Antiques Show *Fine Art, Jewelry and Antiques.*



“Buy what you love...  
trust what you buy.”

~ Jeff Cooley, Owner of The Cooley Gallery,  
Fine American Art, Old Lyme, CT



### Preview Party

Friday, December 1

7:00 to 9:00 pm

Preview tickets visit:  
[greenwichhistory.org/antiquarius](http://greenwichhistory.org/antiquarius)

Or call 203.869.6899 x 10  
\$150 per person

*Passed hors d'oeuvres and light buffet dinner  
by Marcia Selden Catering*

### Antiques Show

Saturday, December 2

10:00 am to 6:00 pm

Sunday, December 3

11:00 am to 5:00 pm

Eastern Greenwich Civic Center  
90 Harding Road, Old Greenwich, CT

Admission: \$15 per person

(Valid for entry during the entire 2-day show)

*For more information visit [www.barnstar.com](http://www.barnstar.com)*

Frank Gaglio, Inc. | 845.876.0616 Office | 914.474.8552 Show Phone | [www.barnstar.com](http://www.barnstar.com)

### Exhibitors

T.J. Antorino Antiques & Design  
Arader Galleries  
Bradbury Art & Antiques  
Jeff R. Bridgman American Antiques  
Britannia House  
Sue Brown UK  
Vincent Callahan & Co.  
The Cooley Gallery  
Richard A. Davis Asian Art  
DK Farnum

Michael Donovan  
Antique American Wicker  
Find Weatherly  
Fletcher/Copenhaver Fine Art  
J. Gallagher Antiques  
Georgian Manor Antiques  
Hanes & Ruskin  
Heller Washam Antiques  
Kairos Gallery  
Kimerling Antiques

Knollwood Antiques LLC  
Leatherwood Antiques  
CM Leonard Antiques  
Glen Leroux Antiques Inc.  
James Levinson, Inc.  
Moylan/Smelkinson - The Spare Room  
Nicolo Melissa Antiques  
Frank S. Oppel  
Poirier Schweitzer  
Port 'N Starboard Gallery

Donald Rich Antiques  
Jon Rider Antiques  
G. Sergeant Antiques  
Shaia Oriental Rugs of Williamsburg  
Nula Thanhauser Antique & Vintage  
Purses & Accessories  
Earle D. Vandekar of Knightsbridge, Inc.  
Village Braider  
Withington and Co.  
*and more*

**Antiques & Fine Art**  
MAGAZINE

**incollect**

**FINE ART**  
CONNOISSEUR

**Greenwich  
Historical  
Society**  
*Explore our colorful past*

*Tillett Textiles for Richard Keith Langham*

*produced by Frank Gaglio, Inc.*



*Greenwich* WINTER ANTIQUES SHOW

SPECIAL SHOW SECTION



*Make Your Holidays Stylish!*  
At The Greenwich Winter Antiques Show



OLD GREENWICH, CONN. — Welcome to the Greenwich Winter Antiques Show, where discovering your inner decorator comes alive on December 1–3. As a continuing benefit for the Greenwich Historical Society, this year's show will present 42 outstanding and talented exhibitors displaying fine art, marine art, estate and vintage jewelry, American and continental furniture, prints, luxury handbags and more from the Eighteenth Century to the mid-Twentieth Century from a multitude of cultures and periods. Tour and shop the show before it opens to the public, making for one outstanding evening. Opening night is Friday, December 1, from 7 to 9 pm. You won't want to miss the chance to see how Richard Keith Langham, the honorary design chair, magically transforms the Eastern Greenwich Civic Center into an

extravagant holiday wonderland, grounded in his celebrated Anglo-Southern style. Passed hors d'oeuvres, open bar and light buffet dinner will be provided by Marcia Selden Catering & Event Planning. Tickets are \$150 per person and include admission for the entire weekend. For more information visit [www.barnstar.com](http://www.barnstar.com) or [www.greenwichhistory.org/antiquarius](http://www.greenwichhistory.org/antiquarius) or call 203-869-6899, ext 10. The preview gala and show will be held at the Eastern Greenwich Civic Center, 90 Harding Road. Regular show hours are Saturday, December 2, 10 am to 6 pm, and Sunday, December 3, 11 am to 5 pm. Admission of \$15 gives you unlimited reentry to the show all weekend. Make plans now to join us and bring your dreams, as they may well be fulfilled at the Greenwich Winter Antiques Show, produced by Frank Gaglio, Inc.



 *Leatherwood Antiques~*  
[www.leatherwoodantiques.com](http://www.leatherwoodantiques.com) 508-420-1433



Cast Iron ACE sign with Centaur aiming a javelin (greek mythology)



Superb Wakefield Co. ornate wicker base with oak top



Stylish Wrought Iron side chair



## SPECIAL SHOW SECTION

*Greenwich*

## WINTER ANTIQUES SHOW



LEATHERWOOD ANTIQUES, Sandwich, Mass. — Superb cold-painted Austrian bronze fierce tiger, circa 1900, measuring 4½ inches tall by 7 inches long. For more photos, [www.leatherwoodantiques.com](http://www.leatherwoodantiques.com) under: Vienna Bronzes – Sculptures

*www.barnstar.com*



THE COOLEY GALLERY, Old Lyme, Conn. — Frank Townsend Hutchens, "Tea Time," oil, 22 by 28 inches.



VILLAGE BRAIDER — Nineteenth Century tin glazed and incised earthenware Albarello, Italian, 14 inches tall (front and back).



FIND WEATHERLY LLC, Westport, Conn. — Nineteenth Century American brass cat andirons.



GEORGIAN MANOR ANTIQUES, Fairhaven, Mass. — Set of four English Regency side chairs finely turned and painted to resemble bamboo, circa 1820–30. The chairs stand 33 inches tall by 18 inches wide and 18 inches deep.



DONALD A. RICH, INTERIORS & ANTIQUES, New Canaan, Conn. — Bronze horse head, Madeleine Park, N.Y.

WHIMSICAL RUNNING HORSE WEATHERVANE WITH SASSY MANE AND TAIL;  
VERDIGRIS COPPER WITH WEATHERED ORIGINAL GOLD LEAF SURFACE;  
NEW ENGLAND; CIRCA 1890.  
L 33"; H 18".



1235 CONGRESS STREET PORTLAND, ME 04102 207.773.8288

DONALD HELLER: 917.592.5699

KIMBERLYWASHAM@GMAIL.COM

**HV**

**HELLER WASHAM**  
— ANTIQUES —



# Greenwich WINTER ANTIQUES SHOW

SPECIAL SHOW SECTION

## Lecture & Appraisals By Rago Specialists Dec. 2

Join Rago specialists for a lecture from 10 to 11 am on December 2, followed by complimentary auction evaluations, from 11 am to 3 pm, for fine and post-war/contemporary art, Twentieth/Twenty-First Century design; Eighteenth/Nineteenth Century decorative arts and furnishings, jewelry, silver, coins and currency (photographs acceptable). Rago is a leading US auction house with \$33 million in annual sales, serving thousands of sellers and buyers internationally with a singular blend of global reach and personal service. A world-class venue through which to buy and sell, they hold auctions

and sell privately. Rago is based in New Jersey, midway between Philadelphia and New York City. David Rago and Suzanne Perrault have appeared as appraisers on *Antiques Roadshow* since its inception in 1996. Today, with the addition of appraisers Sebastian Clarke, Meredith Hilferty and Sarah Churgin, Rago provides expertise in furniture, decorative arts, paintings and prints, sculpture, jewelry, silver and metalwork. Show admission of \$15 is required. Appraisals are by appointment only. Email Stephanie Wilson at [stephanie@ragoarts.com](mailto:stephanie@ragoarts.com) or call 609-397-9374 ext 150.



HELLER WASHAM ANTIQUES, Portland, Maine — Tin reflecting candle sconce is a wall mounting sconce of circular form, having repousse tin starburst-patterned reflecting elements mounted with a tinned-sheet iron enclosure with a glazed front. There is a candle arm which mounts at the base. The diameter is 9 3/4 inches, American, circa 1780.



FIND WEATHERLY LLC, Westport, Conn. — Enormous Nineteenth Century Chinese Export camphor wood ship captain's desk.



DONALD A. RICH, INTERIORS & ANTIQUES, New Canaan, Conn. — "Polo Ponies," Gilbert Scott Wright, oil on canvas, measuring 20 by 27 inches.

## Georgian Manor Antiques

*Fine English Furniture, Porcelain and Glass*



Fine Peruvian 19th century giltwood and composition oval mirror. Circa 1890, h 34" x w 28".

Enrique Goytizolo Established 1970

Member of the National Antique & Art Dealers Association of America, Inc.

P. O. Box 271, Fairhaven, Massachusetts 02719  
E-mail: [inquiries@georgianmanorantiques.com](mailto:inquiries@georgianmanorantiques.com)  
Website: [www.georgianmanorantiques.com](http://www.georgianmanorantiques.com)  
Telephone: (508) 991-5675

## J. Gallagher

Box 69, North Norwich, New York 13814



A selection of my Antique Fireplace Equipment

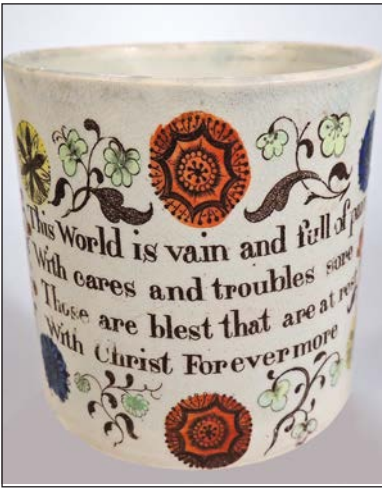
19th Century American Furniture • Period Fireplace Fixtures • Appropriate Accessories  
Telephone (607) 334-4020 Fax (607) 336-7655 [www.antiqueandirons.com](http://www.antiqueandirons.com)



## SPECIAL SHOW SECTION

*Greenwich*

## WINTER ANTIQUES SHOW



LEATHERWOOD ANTIQUES, Sandwich, Mass. — Child's motto mug, "This World is vain and full of pain / With cares and troubles sore / Those are blest that are at rest / With Christ Forever more." The mug is from the late Nineteenth Century, English, and measures 3 inches tall by 3¼ inches in diameter. For more photos, [www.leatherwoodantiques.com](http://www.leatherwoodantiques.com) under 19th Century Children's Pottery – Mugs

*December  
2nd & 3rd*

GEORGIAN MANOR ANTIQUES, Fairhaven, Mass. — Nineteenth Century Fez pottery charger decoration with arabesque patterns in blue and white colors under tin glaze, Morocco, circa 1850, measuring 16¼ inches in diameter.



HELLER WASHAM ANTIQUES, Portland, Maine — Repousse copper and cast zinc game cock weathervane attributed to Harris & Co, Boston, circa 1875, measuring 29¼ inches tall by 28 inches long.



HELLER WASHAM ANTIQUES, Portland, Maine — Pair of Wilson's new American 13-inch celestial and terrestrial globes on stands, Cyrus Lancaster, Albany, N.Y., circa 1850, height in stands, 19 inches and diameter of the globes, 13 inches.



THE COOLEY GALLERY, Old Lyme, Conn. — Wilson Irvine, "Connecticut Hills," oil, 24 by 27 inches.



THE COOLEY GALLERY  
*Fine American Art*



Will Howe Foote • "The Pond, Old Lyme" • Oil on canvas 24" x 24"

25 Lyme Street, Old Lyme, CT 06371 - 860-434-8807

[www.cooleygallery.com](http://www.cooleygallery.com)



# Greenwich WINTER ANTIQUES SHOW

SPECIAL SHOW SECTION



FIND WEATHERLY LLC, Westport, Conn. — Nineteenth Century American large trade sign horse in wood, canvas, papier mache.

LEATHERWOOD ANTIQUES, Sandwich, Mass. — American Arts and Crafts wrought iron candelabra, measuring 20 inches tall by 20 inches wide. For more photos, [www.leatherwoodantiques.com](http://www.leatherwoodantiques.com) under: Furniture & Lighting Objects



DONALD A. RICH, INTERIORS & ANTIQUES, New Canaan, Conn.

## Donald Rich Interiors & Antiques



Wright Barker painting "Best Friends"  
c1894 40 by 57



Pair large Samson  
19thc vases



Gilt convex mirror  
c1810 English

Donald Rich Interiors & Antiques  
114 Main Street, New Canaan, CT 06840 • 203-966-5433  
email: [drantiques@att.net](mailto:drantiques@att.net) • [www.donaldrichantiques.com](http://www.donaldrichantiques.com)



THE COOLEY GALLERY, Old Lyme, Conn. — Lawrence Mazzanovich, "Hills of Westport," oil, 12 by 16 inches.



VILLAGE BRAIDER, Plymouth, Mass. — Early Twentieth Century mohair Steiff pig, 12 inches long.

[www.barnstar.com](http://www.barnstar.com)



THE COOLEY GALLERY, Old Lyme, Conn. — William Trost Richards, "Off Grand Manan," oil, 22 by 32 inches.



SPECIAL SHOW SECTION

Greenwich

WINTER ANTIQUES SHOW

Find  
Weatherly LLC

Specializing in Marine and Folk Art  
and 18th - 19th Century American Furniture

Ann Wilbanks  
Ann@findweatherly.com • findweatherly.com.  
203-858-3087



HELLER WASHAM  
ANTIQUES, Portland,  
Maine — Set of four  
Paktong candlesticks.



GEORGIAN MANOR ANTIQUES, Fairhaven, Mass. — Very fine circular covered box litho painted by Tony Sarg (1880–1942), depicting nautical scenes, Nantucket, measuring 5 inches tall by 10 inches in diameter.



dk  
farnum  
estate jewelry

www.dkfarnum.com

Village Braider Inc.  
508-746-9625



19th c Della Robbia Plaque,  
tin glazed earthenware,  
21" dia.