

THE ADA/HISTORIC DEERFIELD ANTIQUES SHOW

SPECIAL SHOW SECTION

The Show Goes On ...

The ADA HISTORIC DEERFIELD ANTIQUES SHOW

At Our New Location:

**Mullins Center/UMASS Amherst
200 Commonwealth Ave.**

Amherst, Massachusetts 01003

October 7-8, 2017

Columbus Day Weekend

CONNECTICUT

Garvey Rita Art & Antiques
Stephen & Carol Huber
Nathan Liverant and Son, LLC
Mad River Antiques, LLC
Mellin's Antiques
Oriental Rugs Ltd.
Derik Pulito Antiques
Thomas Schwenke, Inc
Jeffrey Tillou Antiques

NEW HAMPSHIRE

Hollis Brodrick
Michael Hingston Antiques, Inc

KANSAS

American Spirit Antiques

NEW JERSEY

A Bird in Hand

OHIO

David L. Good

MAINE

Gleason Fine Art
Jewett-Berdan Antiques

PENNSYLVANIA

Whitman Antiques

MASSACHUSETTS

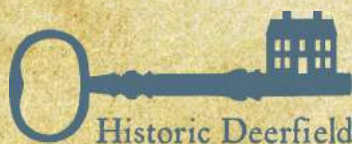
Charles & Barbara Adams
Scott Bassoff/Sandy Jacobs
Joan R. Brownstein
Paul J. DeCoste
Colette Donovan
Peter H. Eaton Antiques, Inc
Samuel Herrup Antiques
Langenbach's Art & Antiques
Hilary & Paulette Nolan
Quadrifoglio Gallery
Elliott & Grace Snyder
Andrew Spindler Antiques and Design
Village Braider Antiques

NEW YORK

Artemis Gallery
Axtell Antiques
Bernard and S. Dean Levy, Inc
Daniel & Karen Olson
Don Olson American Antiques & Folk Art
Steven S. Powers
Earle D. Vandekar of Knightsbridge

VERMONT

Jeff & Holly Noordsy Antiques
Stephen-Douglas Antiques



Historic Deerfield

FOR MORE DETAILS

WWW.ADADEALERS.COM

ANTIQUES DEALERS' ASSOCIATION OF AMERICA, INC. PO Box 218, NORTHWOOD, NH 03261 • 603-942-6498



THE ADA/HISTORIC DEERFIELD ANTIQUES SHOW

SPECIAL SHOW SECTION



BERNARD & S. DEAN LEVY INC, New York City — The Coggeshall family lift top chest, Rhode Island, probably South County, circa 1740. Maple is the primary wood, white pine is the secondary wood, and it measures 32¾ inches high, 37½ inches wide and 18½ inches deep.



ARTEMIS GALLERY, North Salem, N.Y.



STEVEN S. POWERS, Brooklyn, N.Y. — One of five folk art house portraits, Lawrence County, Ind., in pastel, graphite, crayon and watercolor on paper, circa 1892–1913. The sizes range from 7-3/8 by 9-5/8 inches to 10¼ by 13½ inches.



PETER H. EATON, Newbury, Mass. — A fine country Sheraton wing chair with serpentine crest and wings. Small in scale, with nicely turned legs and in old or original surface. Mahogany with pine, birch and maple secondary woods. It is probably southeastern New Hampshire of southern Maine origin, circa 1815–20, and measures 46½ inches high, 14 inches to top of seat rail and 22 inches deep.

October 7-8, 2017
Columbus Day Weekend

NATHAN LIVERANT AND SON, LLC, Colchester, Conn. — Doll-size Classical/Empire figured maple low post bed with scrolled headboard. It was found in Montville, Conn., and dates 1840–65.



Jewett-Berdan



An early large Jewel Rooster weathervane in the original untouched surface, circa 1850. Measures 31" l x 30" t.

Thomas J. Jewett



15 Hopkins Hill Road
Newcastle, Maine 04553
(207) 563-3682
www.jewettandberdan.com
jewett-berdan@roadrunner.com



Charles P. Berdan

THE ADA/HISTORIC DEERFIELD ANTIQUES SHOW

SPECIAL SHOW SECTION



Historic Deerfield President Philip Zea will lead the tour of the antique show. Photo by Penny Leveritt.

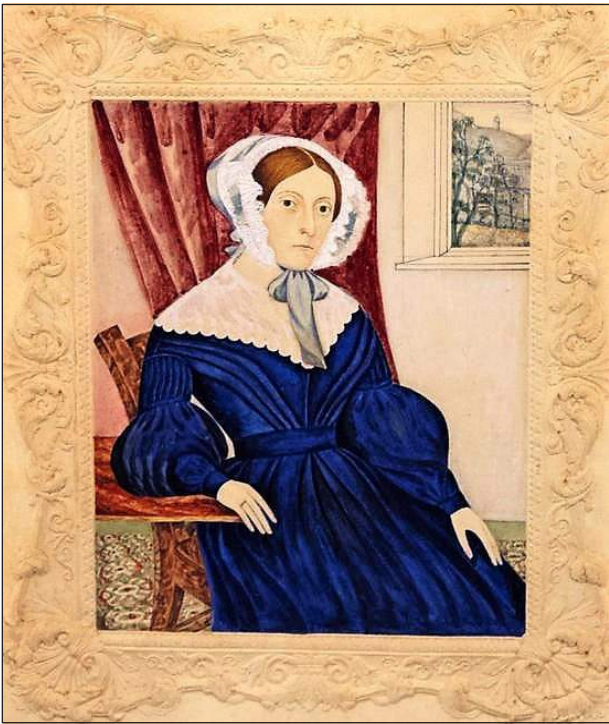
TOUR OF THE SHOW

Historic Deerfield will offer a tour of the antiques show on Saturday, October 7, at 3 pm, with Historic Deerfield President Philip Zea. The tour will offer an exclusive look at the exquisite objects and unique finds available at the show. Included with admission to the show, the tour is a great opportunity for buyers to learn connoisseurship from a leader in the field.



WHITMAN ANTIQUES, Ambler, Penn. — Exceptional pair of American (New York) diamond and frame brass andirons, circa 1765.

STEVEN S. POWERS, Brooklyn, N.Y. — A highly unusual and rare piece of Pennsylvania redware, this monkey bank and whistle is 5 inches (overall height), circa 1860.



JOAN R. BROWNSTEIN, Newbury, Mass. — Butterscotch colored Bakelite radios, both made by Fada, circa 1960.

LANGENBACH'S FINE ART & ANTIQUES, Kingston, Mass. — Watercolor portrait of a woman in a blue dress with an impressed paper border.

NATHAN LIVERANT AND SON LLC ANTIQUES



William and Mary bannister back side chair with paint decorated crest.

Connecticut River Valley, possibly Deerfield, Massachusetts, 1725 - 1750.

A nearly identical chair descended in the Hoyt family of Deerfield and is illustrated in *"The Furniture of Historic Deerfield"* by Dean Fales, Jr., figure 45, page 32.



168 SOUTH MAIN STREET, P.O. BOX 103, COLCHESTER, CT 06415
(860) 537-2409 FAX (860) 537-0577
mail@liverantantiques.com • www.liverantantiques.com



THE ADA/HISTORIC DEERFIELD ANTIQUES SHOW

SPECIAL SHOW SECTION



AXTELL ANTIQUES, Deposit, N.Y. — An unusual four-legged Eighteenth Century hand forged iron kettle lamp with the original wick pick and chain, 8 inches tall.



PETER H. EATON, Newbury, Mass. — A fine William and Mary banister back armchair with bold crown-shaped crest with crisply turned finials and legs. Maple, in dry old red color, with no repair or restoration. Probably southeastern New Hampshire, dating from the mid-Eighteenth Century, and measuring 44½ inches high, 15½-inch seat height.

At Our New Location:
Mullins Center/UMASS Amherst
200 Commonwealth Avenue
Amherst, Massachusetts 01003

October 7-8, 2017 - Columbus Day Weekend



BERNARD & S. DEAN
Levy INC.
The Finest American
Antiques & Art Since 1901

FEDERAL TAMBOUR DESK



Labeled by
Ebenezer Knowlton
(1769-1810)
Boston Circa 1800

Primary Wood:
Mahogany
Secondary Wood:
White Pine

Height: 46 inches
Width: 40 7/8 inches
Depth: 18 3/8 inches

This desk is the subject of an article by Thomas Ormsbee entitled "A New Boston Worker Identified; Ebenezer Knowlton, Was Cabinetmaker from 1796 to 1810..." in the **American Collector**, December 5, 1933, pages 1 and 10.

Provenance: Mrs. Stephen W. Miller; sold at Anderson Galleries, Inc., American Art Association, Sale 3937, December 19, 1931.



Bernard & S. Dean Levy Inc.
24 East 84th Street, New York, NY 10028
212-628-7088 • www.levygalleries.com

PETER H. EATON

AMERICAN FURNITURE

A RARE AND UNUSUAL two drawer blanket chest on frame. The base moldings and four turned feet are made as a separate piece, the side moldings are deeply channeled and and the sides are set into those channels and toe-nailed with roseheaded nails. Maple and yellow pine, with original moldings and cotter pin hinges, and with period brasses set in the original (and only) holes. Probably CT, c.1730-40. 34½" case width, 42¼" ht.



THE ADA/HISTORIC DEERFIELD ANTIQUES SHOW

SPECIAL SHOW SECTION

Unpublished Photographs Of Historic Deerfield On Exhibit During The ADA/Deerfield Show



The 2017 ADA/Historic Deerfield Antiques Show will feature an exhibition of unpublished photographs of Deerfield taken by photographer Samuel Chamberlain (1895–1975) between 1936 and 1971. The soft landscape of the surrounding meadows, the graceful canopy of elms and maples along its street, the clean lines of the village's antique houses and sturdy barns corresponded to the aesthetic that Chamberlain espoused in the books that he published about New England since the mid-1930s. For him Old Deerfield was the essential New England village that could inspire Americans to patriotism and to good taste in design and in the accoutrements of daily living.

In 1952, Chamberlain and Historic Deerfield founder Henry N. Flynt issued the first of five editions of the book on Deerfield that was first published by Hastings House, New York, under the title, *Frontier of Freedom: The Soul and Substance of America Portrayed in an Extraordinary Village, Old Deerfield, Massachusetts*, 1952. It was released again in 1957 and then it appeared in 1965, 1972 and 1977 as *Historic Deerfield: Houses and Interiors*. Although more than 200 photographs were printed in each edition, there were many others that never appeared in book form. A selection of 25 of these photographs that have been printed from Samuel Chamberlain's 5-by-7-inch negatives will be on view.

Dwight-Bernard House, South Parlor, restored 1954. Photo by Samuel Chamberlain.



Mad River
Antiques, LLC



A 6 gallon stoneware crock with a standing deer decoration that fills the entire front. It was made at the pottery of J & E Norton of Bennington, VT and dates from 1850 to 1859.

Steve & Lorraine German
North Granby, CT 06060

Phone: (860)-653-5733
Email: madriverrantiques@aol.com
Web: www.madriverrantiques.com

STEPHEN DOUGLAS
ANTIQUES, Rockingham,
Vt. & Walpole, N.H. — Rare
painted pine one-drawer
miniature blanket chest,
early green paint, 7-7/8
inches long, 6 1/4 inches high.

October 7-8
Columbus Day
Weekend



COLETTE DONOVAN, Merrimacport,
Mass. — Eighteenth Century American
maple burl mixing bowl with spout and
tinned iron band repair. Soulful survivor,
measuring 6 by 12 inches.

ADADEALERS.COM

Langenbach's
FINE ART AND ANTIQUES



Double sided sign is 44 1/4 x 18 1/4

164 Elm Street, Kingston, MA 02364 • 781-585-6123 (Day) 781-585-6529 (Evening) • E-mail: langenbach@verizon.net



THE ADA/HISTORIC DEERFIELD ANTIQUES SHOW

SPECIAL SHOW SECTION



JOAN R. BROWNSTEIN, Newbury, Mass. — A collection of ceramic works by Brother Thomas Bezanson (1929–2007), made at the Weston Priory in Weston, Vt., circa 1960.



WHITMAN ANTIQUES, Ambler, Penn. — Wonderful brass "salver form" English coffee pot with Pseudo marks, circa 1755.



JEFFREY TILLOU ANTIQUES, Litchfield, Conn. — Architectural finial, American, probably New England or New York State, circa 1875–90, copper and copper tubing and is in excellent condition with the original verdigris surface and minor resoldering at the seams. This exceptional architectural element probably adorned the roof or cupola of a great Victorian building or house in the late Nineteenth Century. The design and form with scroll-motifs is further complimented by the exceptional verdigris surface. It measures 60 inches high, 16 inches in diameter (center).



BERNARD & S. DEAN LEVY INC, New York City — Federal sideboard, School of Seymour, Boston, circa 1800. Mahogany is the primary wood, pine is the secondary wood, and it measures 40½ inches high, 67¼ inches wide and 24½ inches deep.



3 x 5'4 Shirvan c 1900 in excellent condition.

Ralph & Karen DiSaia

ORIENTAL RUGS

Connecticut's Trusted Resource
for Distinctive Antique Carpets

Oriental Rugs Ltd.

Niantic, CT

orientalrugs@snet.net • 860-908-0076

open by appointment



www.orientalrugsLtd.com

THE ADA/HISTORIC DEERFIELD ANTIQUES SHOW

SPECIAL SHOW SECTION



DAVID L. GOOD, Camden, Ohio — Oval handled burl bowl, ash wood, great patination and symmetry, woodlands origin and dating from the Eighteenth Century. It measures 17-5/8 inches wide, 14-1/8 inches high and 8 3/4 inches to the top of the handle.



CHARLES & BARBARA ADAMS, Yarmouth, Mass. — Ship shadow box featuring the three masted Belle with a tugboat off the stern. It is in excellent condition and measures 25 by 18 inches.

JEWETT-BERDAN, Newcastle, Maine — Charlotte, KA. Richardson's green linsy-woolsey sampler, early Nineteenth Century and in pristine condition.



PETER H. EATON, Newbury, Mass. — A fine miniature country Chippendale chest with four graduated drawers, applied molding to top edge, and with complete bracket base — no broken "spurs." It is pine throughout, in original red paint with its original knobs. It is probably southeastern Massachusetts or Rhode Island, dates from the first quarter of the Nineteenth Century, and measures 15-3/8 inches wide, 9 1/2 inches deep and 17 inches high. It was formerly in the collection of Ralph Carpenter.



JOHN ROGERS, New London, N.H. — Pea fowl weathervane.



ELLIOTT & GRACE SNYDER

P.O. Box 598 • South Egremont, MA 01258 • 413-528-3581
info@elliottandgracesnyder.com • www.elliottandgracesnyder.com



A fine selection of 16th and 17th century NW European candlesticks in excellent condition

THE ADA/HISTORIC DEERFIELD ANTIQUES SHOW

SPECIAL SHOW SECTION



JEFFREY TILLOU ANTIQUES, Litchfield, Conn. — William Matthew Prior (1806–1873), American, lived/active: Maine/New England, portrait of Martha Bancroft of Durham, N.H., circa 1830–40. This oil on academy board is unsigned and is in a period frame. It is in fine condition with minor imperfections (see full condition report). The provenance lists collection of Mrs Austin E. Powers, collection of Mr and Mrs De Witt C. Howe, Hopkinton, N.H., and Northeast Auction. It measures 21 by 15½ inches sight; 24 by 19¼ inches framed.

At Our New Location:
Mullins Center/UMASS Amherst
200 Commonwealth Avenue
Amherst, Massachusetts 01003

LANGENBACH'S FINE ART & ANTIQUES, Kingston, Mass. — Pumpkin tin parade lantern.



JEWETT-BERDAN, Newcastle, Maine — One of several small, untouched paint-decorated boxes to be shown. It dates circa 1835.



JOAN R. BROWNSTEIN, Newbury, Mass. — Two teak dressing mirrors on stands, made by Pedersen and Hansen, Scandinavian, circa 1960.



DAVID L. GOOD, Camden, Ohio — Oval top diminutive stretcher based table of Massachusetts origin, first half of the Eighteenth Century, and measuring 22½ inches high, the oval top measuring 22 by 13-5/8 inches. The table is ex Jess Pavey, Adolf Myer.

JOAN R. BROWNSTEIN

AMERICAN FOLK PAINTINGS

CUSTOM ROCKING ARMCHAIR in the style of L. Meher of California circa late 1970s. Made of laminated construction and using teak and steel to support its tall angular form.

SIDE TABLE OF GLASS AND CHERRY attributed to Vladimir Kagan (1927-2016). Its top is triangular and it has an angular tripod base, with each leg having a compound style of construction, particularly characteristic in occasional tables from his early work. This table was made circa late 1950s by Kagan-Dreyfuss, Inc. It is 19¾" tall and its triangular top has a maximum side dimension of 26".



THE ADA/HISTORIC DEERFIELD ANTIQUES SHOW

SPECIAL SHOW SECTION



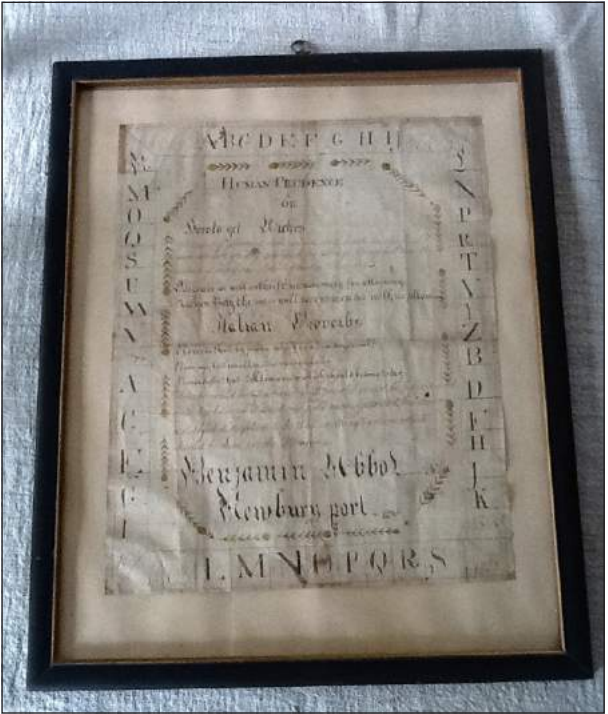
MAD RIVER ANTIQUES, North Granby, Conn. — A rare poster advertising the 1921 Springfield Horse Show at the Eastern States Exposition in Springfield, Mass.



ARTEMIS GALLERY, North Salem, N.Y.



JOHN ROGERS, New London, N.H. — Early Pennsylvania stylized tulip butter print.



STEVEN S. POWERS, Brooklyn, N.Y. — “Oblivious to Danger,” an amusing allegorical folk art oil on canvas of a man on a river or lake with a bear coming up behind him, a thunderstorm with sharp lightning, a fish out of the creel, a No Trespassing/Private Property sign, a split bottle and a sinking boat... but there is a rainbow on the horizon! I am not a fisherman, but I guess the message here is “I’d Rather be Fishing.” The painting measures 31½ by 29½ inches and is circa 1930.



COLETTE DONOVAN, Merrimacport, Mass. — “Human Prudence or How to Get Riches,” Benjamin Abbot, Newburyport, 1803.

A Bird In Hand Antiques

Florham Park, New Jersey



Tel. (973) 410-0077
antiques@abirdinhand.com
www.ABirdInHand.com



Grenfell Mission
“Three Bears on an Ice Pan”



Silk Stocking Mat (Label attached)
20½” wide by 27” tall Circa 1930’s

Stoneware-Decoys-Painted Furniture
Folk Art - Grenfell Mats

Colette Donovan

Early American Country Antiques with Textiles
978.346.0614



Schoolmaster’s Desk

PHILIPS EXETER ACADEMY, NH
with many signatures and provenance.
Early 19thc, original Windsor green.

THE ADA/HISTORIC DEERFIELD ANTIQUES SHOW

SPECIAL SHOW SECTION



A BIRD IN HAND, Florham Park, N.J. — This hen Merganser decoy is a wonderful example of American folk art from the Seaford area of Long Island, N.Y. She retains her original bill and crest and dates circa 1890–1910.

WWW.ADADEALERS.COM



STEVEN S. POWERS, Brooklyn, N.Y. — Woolwork picture of Menands, N.Y., wool over perforated board, circa 1905, 26½ inches by 39 inches.

Whitman Antiques

Specialists in Antique Metalware 215.421.7779



Very Rare 18th Century German Silver Form Brass Epergne. Nuremberg. Circa 1730.



Highly Important Pair of Brass Silver Form Huguenot Wine Buckets. Circa 1710.

www.WhitmanAntiques.com



PRIOR PORTRAIT

Delightful portrait of a young man holding a book attributed to William M. Prior, c. 1845-1850, oil on academy board.
24" x 19½" (overall)



NORTH SHORE, MA REDWARE

Two pieces of North Shore, MA, redware, probably made by the Osborne family, Peabody/Danvers, circa 1780-1810. Both pieces have outstanding color.
Ht. 8¼" (pitcher); Ht. 7½" (jug)

SAMUEL HERRUP ANTIQUES

116 Main Street, P.O. Box 248, Sheffield, MA 01257

(413)229-0424 c: (413)822-1471 • E-mail: herrup@verizon.net • Web: www.samuelherrup.com



THE ADA/HISTORIC DEERFIELD ANTIQUES SHOW

SPECIAL SHOW SECTION



COLETTE DONOVAN, Merrimacport, Mass. — Iron spike candleholder with attached drip pan.



WHITMAN ANTIQUES, Ambler, Penn. — A pair of Gothic Nuremberg brass pricket candlesticks, circa 1500.



JOAN R. BROWNSTEIN, Newbury, Mass. — Charles and Ray Eames molded plywood leg splint, circa 1942.



VILLAGE BRAIDER, Plymouth, Mass. — Cast iron horse mill weight measuring 17 by 17 inches.



CHARLES & BARBARA ADAMS, Yarmouth, Mass. — This early handled Indian hat basket retains touches of red, blue and green paint. It measures 7½ inches high, 15 inches in diameter, and is in great condition.



STEPHEN-DOUGLAS ANTIQUES, Rockingham, Vt. & Walpole, N.H. — Early Nineteenth Century tin and pewter reflector sconce, American origin.

NATHAN LIVERANT AND SON, LLC, Colchester, Conn. — Federal mahogany, cherry and figured maple desk and bookcase, Connecticut River Valley, possibly Springfield, Mass., 1805–30.

STEPHEN & CAROL
HUBER
America's Preeminent Source for Girlhood Embroideries



Clarissa Watson worked this beautiful silk embroidered c.1809 memorial while at the Abby Wright School in South Hadley, MA. It is dedicated to her sister, who was 3 years older, Lucy Watson Mason who died at the age 25 just 8 months after she married Ebenezer Mason. Clarissa married Russell Prouty in 1814.

ALWAYS INTERESTED IN PURCHASING FINE NEEDLEWORK
**FORTY FERRY ROAD, OLD SAYBROOK
CONNECTICUT 06475**
TEL 860.388.6809 • Hubers@AntiqueSamplers.com
www.AntiqueSamplers.com



Polychrome painted Hudson River Valley spoon rack
First half of 18th century • H 22½"
Ex. George and Mildred Samaha

David L. Good
ANTIQUES

7887 State Rt. 177, Camden, Ohio 45311
Phone: (513) 796-2693 Cell: (937) 478-1378

THE ADA/HISTORIC DEERFIELD ANTIQUES SHOW

SPECIAL SHOW SECTION



JEWETT-BERDAN, Newcastle, Maine — An outstanding, paint-decorated six-board blanket box in the original paint, circa 1835, Vermont origin. It is ex Fendelman collection.



STEPHEN-DOUGLAS ANTIQUES, Rockingham, Vt. & Walpole, N.H. — Two watercolor portraits of gentlemen, original frames (probably brothers), attributed to Jacob Maentel (1763–1863), ex Joe Kindig Jr, York, Penn.



VILLAGE BRAIDER, Plymouth, Mass. — Silver gelatin print 2-sheet image of Tucker Farm, Charlton, Mass., measuring 20 by 27 inches.

Antiques Show Ticket Gives Access To ‘Why We Collect: Recent Acquisitions’

Each ticket for the 2017 ADA/Historic Deerfield Antiques Show also gives admission to Historic Deerfield’s Flynt Center of Early New England Life and the Apprentice’s Workshop at Dwight House. A short ride from Amherst to Deerfield will give visitors the opportunity to explore the new exhibition, “Why We Collect: Recent Acquisitions at Historic Deerfield, 2010–2017,” presenting more than 20 highlights from the past seven years. The exhibition also explains how these objects help us to understand everyday life, work and culture in New England’s past, and why the museum’s staff added them to the collection.

Using three thematic categories, the exhibition showcases a variety of media from furniture and clothing to manuscripts and architectural paneling. The museum’s primary collecting area is the material culture and decorative arts of Deerfield, from early settlement to the present. The section “Coming Home to Deerfield” features several significant objects of art, culture and history made and/or owned on the street in Old Deerfield, which were supported by the Deerfield Collectors Guild. These acquisitions enhance the museum’s mission of interpreting the craftsmanship, design, technology and patronage of this great place.



Part of the current exhibition is this portrait of Alexander Allan Cameron by Augustus Fuller, possibly Springfield, Mass., 1858. It is a watercolor, ink, pencil on paper and was acquired through the Hall and Kate Peterson Fund for paintings, prints, drawings and photographs.

WWW.ADADEALERS.COM

BERNARD & S. DEAN LEVY INC, New York City, — Federal bowfront chest of drawers, attributed to the workshop of Abiel White (1766–1844), Weymouth, Mass., circa 1800. The primary wood is mahogany, the secondary wood is white pine, and it measures 34-3/8 inches high, 42 inches wide and 21 1/4 inches deep. For a discussion of White and his workshop, see Brock Jobe, Gary R. Sullivan and Jack O’Brien, *Harbor & Home: Furniture of Southeastern Massachusetts, 1710-1850*, pages 35–38, and especially his chests on pages 190–192.



STEPHEN • DOUGLAS

Rockingham, Vermont • 802-463-4296 • Walpole, New Hampshire



Oversized 19th cent. Canada goose decoy, 31” long overall, fine condition, Massachusetts origin.

THE ADA/HISTORIC DEERFIELD ANTIQUES SHOW

SPECIAL SHOW SECTION



A BIRD IN HAND, Florham Park, N.J. — Folk art box with Blackhawk horse, a creative folk art box decorated with hand carved figures retaining their original polychrome paint. The horse is an image of the famous Blackhawk weathervane and the sides have carvings of tools. It measures 10 inches wide, 6 3/4 inches deep, 4 1/4 inches high and dates circa 1920-35.

October 7-8
Columbus Day
Weekend



NATHAN LIVERANT AND SON, LLC, Colchester, Conn. — Silk on linen needlework sampler by Mary Ann Merwin, age 10, dated 1835.



ARTEMIS GALLERY, North Salem, N.Y.

PETER H. EATON, Newbury, Mass. — A rare pair of William and Mary side chairs with carved and pierced crests and Spanish feet. Originally caned, they are now in worn old velvet and equally worn old black paint. They are English, circa 1700-20, and measure 47 inches high, 18 1/2-inch seat height.



CHARLES & BARBARA ADAMS, Yarmouth, Mass. — Oil on canvas of an early house with stone wall, measuring 18 by 15 inches in gold frame.

JEFFREY TILLOU ANTIQUES



Dickinson Family Register, Amherst, MA, ca. 1808-1838

Signed: M. Dickinson, Amherst, Aug. 1825. Watercolor, pen, ink and gouache on paper. 28 1/2" x 25" framed. Excellent condition with only minor staining and light toning, in the original mahogany frame. Inscribed by artist, Heaven gives us friends to bless the present scene. Resumes them to prepare us for the rest. Look inwards and look deeper still, preferably deep our treasure runs. The golden veins through all eternity... find...its...life endless joy. Descended through the original family until the present.

39 West St. "On the Green" in Litchfield, CT 860.567.9693 tillouantiques.com



Courting Mirror
A Chippendale 18th century courting mirror. Original maple frame and dark finish and original thin mirror glass. 11" x 12"

FOLK ART • BASKETS & STONEWARE

EARLY LIGHTING

REDWARE • TREENWARE

HEARTH ACCESSORIES • AMERICAN

COUNTRY FURNITURE

Axtell Antiques

EARLY AMERICAN - RICHARD S. AXTELL

1 River St., Deposit, NY 13754

Now open Tuesday through Saturday 10.00 to 4.00
607-467-4444 • e-mail: rsaxtell@msn.com

THE ADA/HISTORIC DEERFIELD ANTIQUES SHOW

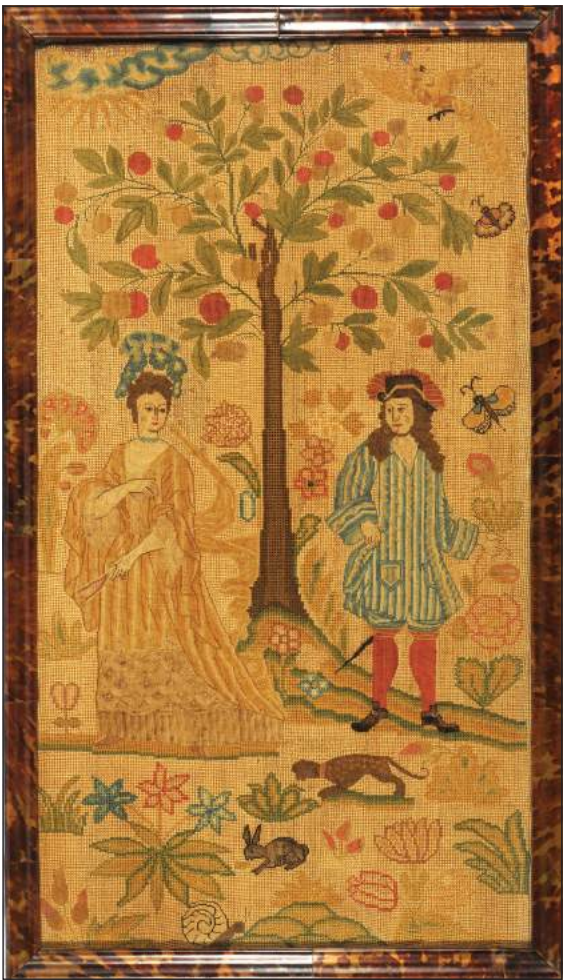
SPECIAL SHOW SECTION



AXTELL ANTIQUES,
Deposit, N.Y. — This
hand-hewn maple burl
bootjack dates circa 1820
and measures 14 inches
long and 5 inches wide.

The ADA
HISTORIC
DEERFIELD
ANTIQUES
SHOW

STEPHEN & CAROL HUBER, Old Saybrook, Conn. — This graphic circa 1700 needlework picture features a central tree flanked by an elegantly dressed couple acutely aware of one another. The various animals, birds and butterflies in a lushly flowered setting, enhanced with a depiction of the sun and billowing clouds, represents nature. The splendor of nature is often depicted in needlework as a backdrop in which budding human relationships can flourish. This sampler is wool and silk on linen, measuring 28¾ by 17 inches framed.



Charles and Barbara Adams

289 Old Main Street, South Yarmouth, MA 02664

Home (508) 760-3290 • Cell (508) 364-6119

or (508) 633-6119

E-mail: adams2430@gmail.com



Bennington Pitcher and Bowl

Flint enamel washbowl and pitcher, brilliant colors, brown, green and orange. Twelve sided bowl 13½" diameter. Pitcher 12½" tall. Both pieces have a bold clear 1849 mark. A spectacular piece in excellent condition. Barret's book *Bennington Pottery and Porcelain*, page 118, plate 167.

Shows and By Appointment

Bennington Pottery Our Specialty

STEVEN S. POWERS



Iconic Iron Indian

Miniature weathervane

Forged and chiseled iron

Circa: 1800

Size: 12" (h) x 9" (w) x 1/8" (d)

This striking object leaves an indelible imprint on your minds' eye—it is powerful and mysterious.

This small chiseled and forged flat iron figure depicts a silhouetted American Indian with calumet (pipe), hair roach and pony-tail, and wearing a breechcloth with genitals exposed.

Provenance: Marvill Collection of Folk Art.

Illustrated twice and discussed in *American Vernacular*, 2002, p. 1 (title page) and p. 149.

For additional images and information on this piece and many others that we will be bringing to this show, please visit: stevenspowers.com

WORKS OF
& AMERICANA
ART

THE ADA/HISTORIC DEERFIELD ANTIQUES SHOW

SPECIAL SHOW SECTION

Ceramics Made For The American Market
Federal Period 1790-1830



ArtemisAntiques.com

Jesse Goldberg • North Salem, NY 10560 • 914-669-5971



STEPHEN & CAROL HUBER, Old Saybrook, Conn. — Deborah Keith, Massachusetts, circa 1806. She stitched a very unusual design for her memorial picture. At first glance it appears to be a religious scene with Mary and the baby Jesus with three shepherds, two who are removing their hats in respect to the child. However, there is no Joseph or animals that we normally see in scenes depicting the birth of Jesus. In researching the family, this may depict Deborah with her infant sister that died before the age of one. Whatever she was depicting, it is certainly original. Deborah (1789-1885) was born in Grafton, Mass., one of 11 children born to Royal Keith (1769-1857) and Deborah Adams (1775-1857). She married Orray Taft (1793-1865) in 1821, they lived in Providence where he was a successful merchant and they had five children. Silk and watercolor on silk, it measures 16½ by 18¾ inches with the original frame.

A BIRD IN HAND, Florham Park, N.J. — A pair of cast iron andirons with George Washington castings measuring 15 inches high, 14½ inches deep and 6½ inches wide. The fire dogs are signed “ESO DB VA,” date from the first quarter of the Twentieth Century and retain an early, beautiful repaint.

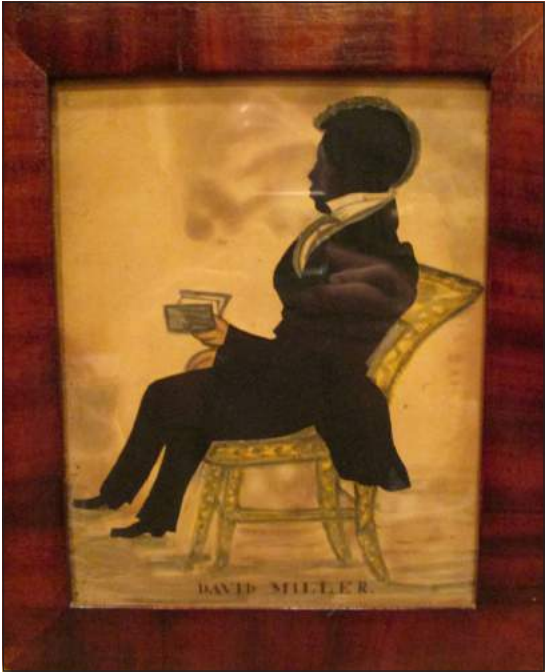


LANGENBACH'S FINE ART & ANTIQUES, Kingston, Mass. — Cast iron lobster doorstop by National Foundry.



JEWETT-BERDAN, Newcastle, Maine — Early shirred rug, no restoration, mounted for hanging.

October 7-8
Columbus Day
Weekend



DAVID L. GOOD, Camden, Ohio — Silhouette of an African American boy, mid-Atlantic to Virginia origin, circa 1830, and measuring paper size, 8¾ by 7 inches.

Village Braider Inc.
508-746-9625
Plymouth, Mass.



Rare oil painting on panel of a
White Mountain Scene by
Sanford Thayer, Syracuse, NY,
(1820-1860), 15" x 8". Artist is better
known for his Adirondack scenes.

THE ADA/HISTORIC DEERFIELD ANTIQUES SHOW

SPECIAL SHOW SECTION



Mellin's Antiques

Collecting Canton In Pursuit of the Best

Gail & Rich Mellin, in conjunction with their daughter, Erica Mellin Scioscia are thrilled to announce the release of their first book, *Collecting Canton: In Pursuit of the Best*.

The *limited edition* book is the first of its kind to deal exclusively with Chinese export porcelain with the Canton design and catalogs its ninety-two forms.

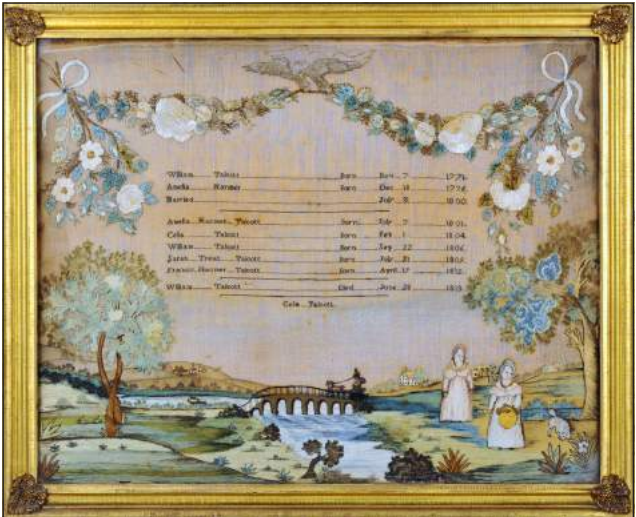
This educational coffee table book is not just for collectors, it is also designed for individuals who want to learn more about Canton.

To order your copy, visit www.mellinsantiques.com or contact us at (203) 938-9538.



JOHN ROGERS, New London, N.H. — Faux tiger maple grain blanket chest, completely original.

STEPHEN & CAROL HUBER, Old Saybrook, Conn. — Celia Talcott, in her mid teens, worked this circa 1818 Wethersfield, Conn., sampler/family record which is featured in Betty Ring's book *Girlhood Embroidery*, figure 265. Note the racy buggy on the bridge called a "two horse roadster" and the very early steam powered boat. Wethersfield samplers are often embellished with townscapes and flowered garlands suspended by an eagle and bowknots surrounding a family record. This stunning example is exceptional with the large beautifully designed and executed scenic panel at the bottom. The original frame is highly developed, and it retains its wonderful original glass. Celia Talcott (1804-1886) was the daughter of Wethersfield druggist William Talcott and Amelia Hanmer. She married Henry Robbins. This sampler is silk, paint and painted paper on linen, 21½ by 27½ inches.



NATHAN LIVERANT AND SON, LLC, Colchester, Conn. — Oil on canvas portrait of a young girl, New England, 1820-45.

JEFFREY TILLOU ANTIQUES, Litchfield, Conn. — French Art Deco lamp, "Danseuse a La Coupe," by Max Leverrier (French, 1891-1973), with shade by Daum, Paris. It is in fine original condition and surface. Famous for his Art Deco lamps with women, circa 1925-30, this lamp was created in his Paris studio and foundry.



VILLAGE BRAIDER, Plymouth, Mass. — Cast iron kicking donkey shooting gallery target measuring 18 by 21 inches.



AXTELL ANTIQUES, Deposit, N.Y. — "Heart in Hand," hand painted on silk with the original lemon gold frame. It measures 10 by 12 inches and dates circa 1840.



Woodland's Indian Bird Handled Ash Burl Bowl

John H. Rogers ANTIQUES

P. O. Box 234, Elkins,
New Hampshire 03233

603-526-6778

603-454-4646 - cell

jhwithrow@yahoo.com



Pennsylvania Red Ware Loaf Dish with Four Stars