

Special Show Section

# CHESTER COUNTY ANTIQUES SHOW



## CHESTER COUNTY ANTIQUES SHOW

A BENEFIT FOR THE CHESTER COUNTY HISTORICAL SOCIETY



Featuring Fine 18th and 19th Century Arts & Antiques.

AT THE PHELPS SCHOOL MALVERN, PA

610-692-4800 | [CHESTERCOHISTORICAL.ORG](http://CHESTERCOHISTORICAL.ORG)

FRI - PREVIEW PARTY | SAT & SUN - GENERAL ADMISSION

A Bird in Hand Antiques  
Bill Kelly Antiques  
Britannia House Antiques  
D.M. DeLaurentis Antiques  
Dennis Raleigh Antiques & Folk Art  
Dixon-Hall Fine Art  
Dover House Antiques  
Dubey's Art & Antiques  
Edward J. Rayeur Antiques  
Gary Sergeant Antiques, LLC  
Greg K. Kramer & Co.  
H.L. Chalfant American Fine Art & Antiques  
Hanes & Ruskin Antiques  
Heller Washam Antiques  
Hilary & Paulette Nolan  
Holly Peters Oriental Rugs  
James Gallagher  
James M. Kilvington, Inc.

SHOW EXHIBITORS  
Johanna Antiques  
John H. Rogers  
Joseph J. Lodge  
Leatherwood Antiques  
Lorraine Wambold Fine Estate Jewelry  
Malcolm Magruder  
Marc Witus Antiques  
Mark & Marjorie Allen Antiques  
Michael Gunselman Antiques  
Mid-Atlantic Antiques  
Neverbird Antiques  
Philip H. Bradley Co.  
Quadrifoglio Gallery Oriental Rugs  
R.M. Worth Antiques, Inc.  
Roger D. Winter, Ltd.  
School House Farm Antiques  
Steven Smoot Antiques & Navajo Textiles

Thistlethwaite Americana  
The Federalist Antiques  
The Hanebergs Antiques  
The Norwoods' Spirit of America  
Thomas Brown Antiques  
Van Tassel - Baumann American Antiques  
Vilnis & Co. Antiques  
W.M. Schwind Jr. Antiques & Fine Art  
Wesley T. Sessa Antiques  
West Pelham Antiques  
William Hutchison  
William R. & Teresa F. Kurau  
Whitman Antiques

~ List complete as of March 13, 2017 ~

PRESENTING CORPORATE SPONSOR





CHESTER COUNTY ANTIQUES SHOW

Special Show Section



VAN TASSEL BAUMANN AMERICAN ANTIQUES, Malvern, Penn. — An imposing Pennsylvania sampler by Hannah Knight, 1837, that is skillfully stitched with brilliant color.



VAN TASSEL BAUMANN AMERICAN ANTIQUES, Malvern, Penn. — Boston silk memorial to Deacon John Friend, February 25, 1785.



WILLIAM R. & TERESA F. KURAU, Lampeter, Penn. — Original Currier & Ives print, “The Constitution and Guerriere War of 1812” lithograph. This is one of a group of naval prints to be offered.

# West Pelham Antiques

**Michael A. Weinberg**  
24 Amherst Road, Pelham, MA 01002-9624  
www.westpelhamantiques.rubylane.com  
westpelhamantiques@gmail.com  
413-575-5523  
American & English Needlework Samplers  
Early English Ceramics • American Country in Paint

**Harriet Augusta Sibley's Needlework Sampler, Barre, MA, 1826, with 2 houses. 17" x 16½" (sight); 18½" x 18" (frame). Harriet was the daughter of Samuel Sibley and Rebecca Holden; she married Samuel L. Hunt in 1837, and they had 3 children.**

## Preview Party

Friday, April 7  
5pm early admission (\$200 per person)  
6pm regular admission (\$140 per person)  
Saturday, April 8 - General Admission from 10am to 6pm  
\$15.00 per person (Lectures included)  
Sunday, April 9 - General Admission from 11am - 5pm  
\$15.00 per person. Children 10 and under FREE

### Directions To The Phelps School

Our beautiful rural campus is located only 22 miles from Central Philadelphia, in Pennsylvania. We are situated in a suburban neighborhood on over 70 acres of green rolling hills. The main buildings are clustered along a ridge of high ground with playing fields on either side. Small homelike dormitories reinforce the relaxed family atmosphere which is one of Phelps’ most impressive features. Classrooms, dormitories and the dining hall are all just a short walk from one another. There is ample space beyond for organized athletics and impromptu outdoor activities.

#### Directions from the Pennsylvania Turnpike

Take Exit 326 (Valley Forge). After going through toll booth, take second exit for Route 202 south. Proceed to Paoli exit (Route 252), and go up long hill to Route 30 (Lancaster Ave). Turn right and continue through Paoli to traffic light at Matthews Ford. Bear left on Paoli Pike and go approximately three miles to light at Sugartown Road. Turn right to School entrance on right.

#### Directions from Baltimore / Washington, DC

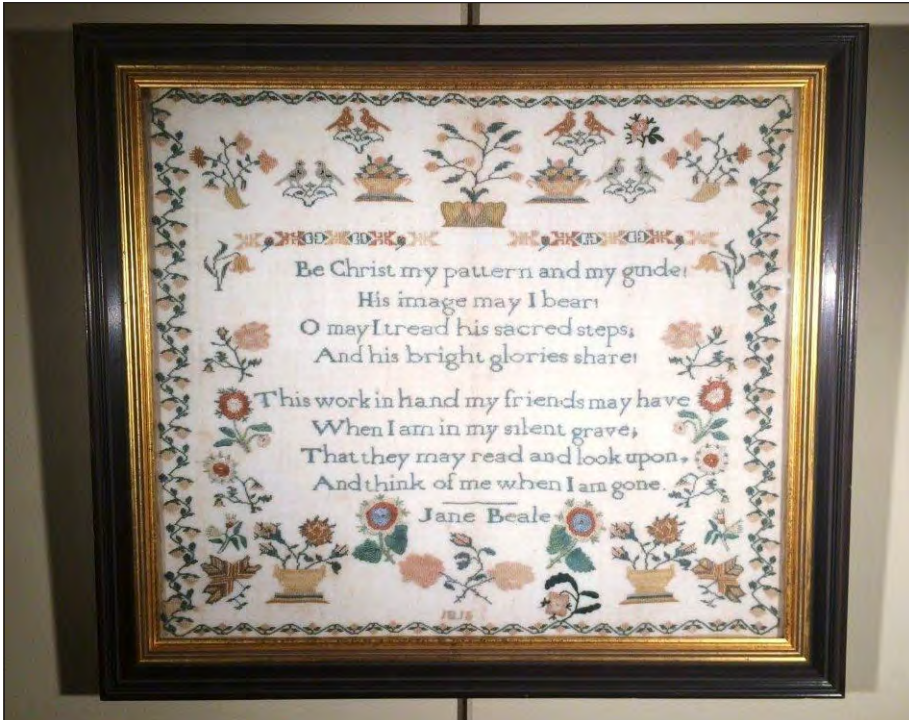
Take I-95 North to Exit 8 for Route 202 at Wilmington, Delaware. Go north on 202 to West Chester and the exit for Paoli Pike. At the end of the exit ramp, turn left toward Paoli and go approximately five miles to traffic light at Sugartown Road. Turn left to School entrance on right.

#### Directions from the Philadelphia International Airport

Follow signs for I-95 South toward Wilmington. Get off I-95 at Exit 7 for I-476 to Plymouth Meeting. Proceed north on I-476 to Exit 3, and go south on Route 1 towards Media / Lima. Go about two miles to Route 252. Go north on 252 for approximately ten miles to traffic light at Route 30 in Paoli. Turn left and continue part way through Paoli to traffic light at Matthews Ford. Bear left on Paoli Pike and go approximately three miles to light at Sugartown Road. Turn right to School entrance on right.



Special Show Section

**CHESTER COUNTY ANTIQUES SHOW**

VAN TASSEL BAUMANN AMERICAN ANTIQUES, Malvern, Penn. — An unusual and colorful Chester County Pennsylvania sampler by Jane Beale dated 1816.

*April 7th, 8th & 9th*

*Featuring Fine 18th & 19th Century  
Arts & Antiques*

The Chester County Historical Society (CCHS) is widely respected as one of the Commonwealth's premier history museums and educational centers, playing an important role in history education, cultural diversity and economic impact for the Southeastern Pennsylvania region.

Chaired by Francis "Fran" B. Jacobs II. and Chuck & June Piola, the show will be held from April 7-9, 2017 at the Phelps School. The Phelps School in Malvern is a unique facility which features accessibility, spaciousness, and natural light that will create the perfect setting for the vendors and all of their antique items.

The theme of this year's event is Botany. The show attracts visitors and collectors every year to view its variety of items and furniture. We invite you to support the 35th annual show by becoming a sponsor of this one-of-a-kind Chester County tradition.

The Phelps School, Malvern, PA  
610.692.4800  
[www.chestercohistorical.org](http://www.chestercohistorical.org)

**\*\*\*HISTORICAL STAFFORDSHIRE  
& RARE COLLECTOR'S ITEMS\*\*\***



18 inch Dark Blue "Upper Ferry Bridge Over The Schuylkill River"  
Platter by Joseph Stubbs, Circa 1825, Mint Condition.

We will be bringing a large selection of Historical Staffordshire, Liverpool pitchers, Anglo-American ceramics, Currier & Ives and other items pertaining to our country's early history. A visit to our booth will be worth your while.  
We will have numerous views of Philadelphia on Staffordshire.

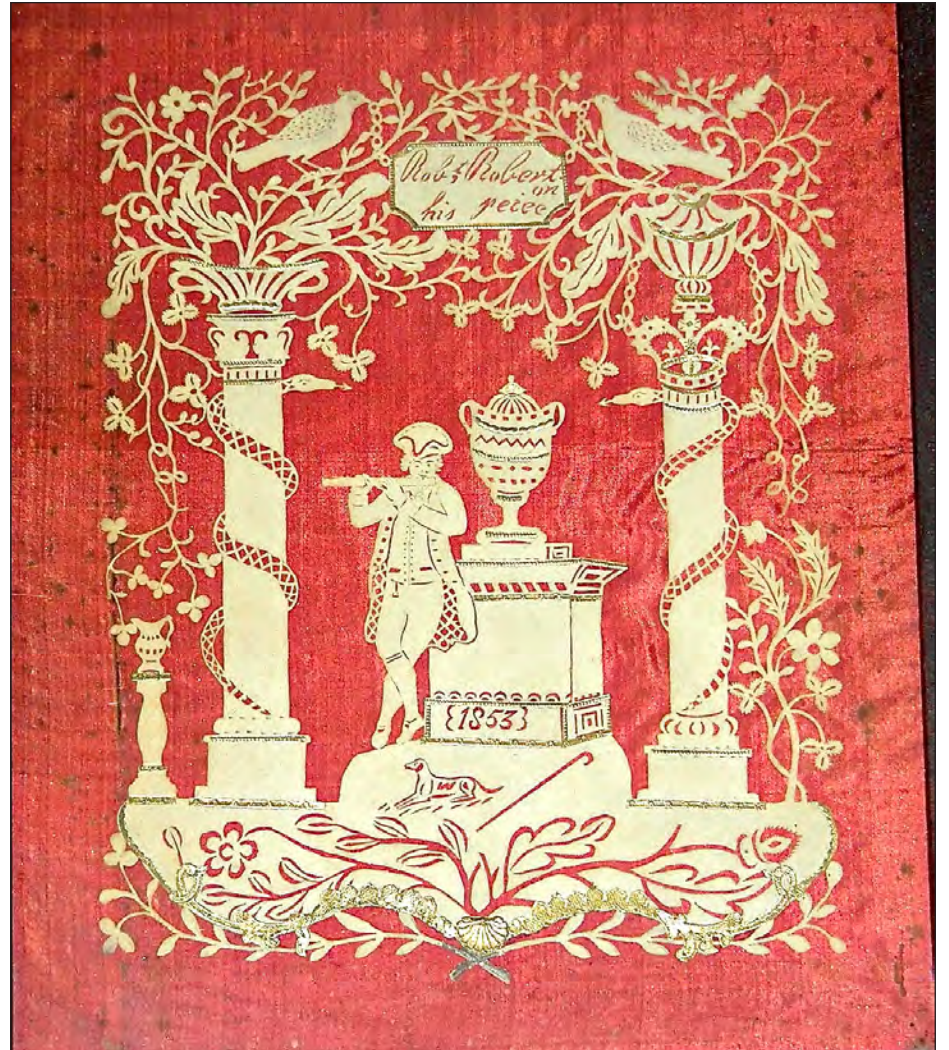
**William R. & Teresa F. Kurau**

P.O. Box 457, Lampeter, PA 17537

(717) 464-0731 or (717) 940-5372

[www.historicalchina.com](http://www.historicalchina.com) | email: [lampeter@epix.net](mailto:lampeter@epix.net)

We are always interested in purchasing either one piece or an entire collection.



WEST PELHAM ANTIQUES, Pelham, Mass. — Unusual Scherenschnitte (cut paper) mounted on original red silk, signed Robert Robertson and dated 1853. It is trimmed with gold leaf; in a period frame, measuring 9 by 11 inches sight; 13 by 15 inches framed.

*A Benefit for the  
Chester County Historical Society.  
In its 35th year, the Chester County  
Antiques Show is CCHS's largest community  
and fundraising event.*



An Exceptional Dutch Sampler  
Dated 1796.  
18 1/2" H x 15" W



Van Tassel Baumann American Antiques  
[vantasselbaumann.com](http://vantasselbaumann.com) • 610-647-3339