

WINTER ANTIQUES SHOW

SPECIAL SHOW SECTION

WINTER ANTIQUES SHOW

January 20-29, 2017

OPENING NIGHT PARTY
January 19, 2017

Presenting Sponsor
CHUBB®

Loan Exhibition
**Abby Aldrich Rockefeller Folk Art Museum:
Revolution & Evolution**
Colonial Williamsburg Foundation

Loan Exhibition Sponsor
**B
BESSEMER
TRUST**

Portrait of Mrs. Seth Wilkinson by the Wilkinson Limner, New York, probably 1827-1830.
Colonial Williamsburg Foundation, museum purchase, 1960.100.2

winterantiquesshow.com

A BENEFIT FOR EAST SIDE HOUSE SETTLEMENT
CELEBRATING 125 YEARS OF COMMUNITY SERVICE

Park Avenue Armory, New York City

A LA VIEILLE RUSSIE • ADELSON GALLERIES, INC. • ALEXANDER GALLERY • MICHAEL ALTMAN FINE ART • APTER-FREDERICKS • ARADER GALLERIES
ARONSON OF AMSTERDAM • MICHELE BEINY, INC. • H. BLAIRMAN & SONS LTD • JONATHAN BOOS • BOWMAN SCULPTURE • RALPH M. CHAIT GALLERIES, INC.
COHEN & COHEN • PHILIP COLLECK, LTD. • THOMAS COLVILLE FINE ART • THOMAS COULBORN & SONS LTD. • COVE LANDING • DANIEL CROUCH RARE BOOKS
DIDIER LTD • GEOFFREY DINER GALLERY, INC. • DONZELLA • PETER FETTERMAN GALLERY • PETER FINER • GEMINI ANTIQUES LTD. • DAVID GILL GALLERY
MICHAEL GOEDHUIS • BERNARD GOLDBERG FINE ARTS, LLC • GLASS PAST • THOMAS HENEAGE ART BOOKS • HILL-STONE, INC. • HIRSCHL & ADLER GALLERIES, INC.
HOSTLER BURROWS • STEPHEN & CAROL HUBER • HYDE PARK ANTIQUES, LTD. • JAMES INFANTE • BARBARA ISRAEL GARDEN ANTIQUES • KENTSHIRE
KESHISHIAN • KELLY KINZLE • LEBRETON • BERNARD & S. DEAN LEVY INC. • NATHAN LIVERANT AND SON, LLC • LOST CITY ARTS • MACKLOWE GALLERY, LTD
MAISON GERARD • TODD MERRILL STUDIO • JOAN B MIRVISS LTD • LIZ O'BRIEN • THE OLD PRINT SHOP, INC. • OLDE HOPE ANTIQUES, INC.
PETER PAP ORIENTAL RUGS, INC. • GERALD PETERS GALLERY • RONALD PHILLIPS LTD • FRANK & BARBARA POLLACK AMERICAN ANTIQUES & ART • JAMES ROBINSON, INC.
DAVID A. SCHORSCH~EILEEN M. SMILES AMERICAN ANTIQUES • SCHWARZ GALLERY • STEPHEN SCORE • S.J. SHRUBSOLE CORPORATION • ELLE SHUSHAN
ROBERT SIMON FINE ART • ELLIOTT & GRACE SNYDER • GALERIE ST. ETIENNE • TAMBARAN • CAROLLE THIBAUT-POMERANTZ • THROCKMORTON FINE ART, INC.
TILLOU GALLERY • RUPERT WACE ANCIENT ART • WARTSKI • ROBERT YOUNG ANTIQUES • EXECUTIVE DIRECTOR, CATHERINE SWEENEY SINGER



WINTER ANTIQUES SHOW

SPECIAL SHOW SECTION





STEPHEN & CAROL HUBER, Old Saybrook, Conn. — Sarah Ann Bradley’s sampler includes a family record and a verse describing the advantages of learning while you are young and without worries. The buildings at the bottom are in New Haven and associated with Yale. Sarah (1816–1889) was born in East Haven, Conn., daughter of Roswell Bradley (b 1780) and Polly Potter (b 1781). She married Joseph Hotchkiss, a farmer, in 1836 and had five children. The sampler is worked with silk thread on a linen background and measures 24-3/8 by 19-5/8 inches without the frame. Inscribed: Wrought by Sarah Ann/ Bradley under the instruction/ of Miss Maria M. Street/ at the age of 9 years AD 1825. Note: (Maria Street and her sister Frances both taught in New Haven.) A consensus of opinion is that the buildings represented are, on the left, “Connecticut Hall” built in 1752, and “Union Hall” built in 1794, and torn down in 1893 for “Vanderbilt Hall.” “Connecticut Hall” and “Union Hall” were the first two buildings that established the layout of the “Old Brick Row.”



H. BLAIRMAN & SONS LTD, London — Pair of “arch-support” counterbalance candlesticks, designed and manufactured by W.A.S. Benson (1854–1924), English, circa 1900. Literature: Trade catalog: *Price List of Fittings for Oil, Gas, Candle, Table Ware, etc*, 1899–1900 (for this model, described as “[f]or Piano or Mantle-piece.” Ian Hamerton W.A.S. Benson, *Arts and Crafts Luminary and Pioneer of Modern Design*, 2005, p. 120, pl. 96 (same model).



JONATHAN BOOS, New York City — Elizabeth Sparhawk-Jones (American, 1885–1968), “A Friend of Mine,” 1912, oil on canvas, signed lower left, 34 by 32 inches.



BARBARA ISRAEL GARDEN ANTIQUES, New York City — Bronze stool in the form of a stack of academic books, English, circa 1940, 18 inches high, 23½ inches wide.

Ben Shahn (American, 1898-1969)
Contemporary American Sculpture, 1940
Tempera on board
21 1/2 x 30 inches
Signed and dated lower right

Jonathan Boos



*Specializing in
20th-Century
American Art*

New Location:
18 East 64th Street
4th Floor
New York, NY 10065

tel 212.535.5096
fax 212.535.3554
jb@jonathanboos.com
jonathanboos.com



WINTER ANTIQUES SHOW

SPECIAL SHOW SECTION



Stephen Score inc

Boston, MA • 617.227.9192 • stephen.score@verizon.net



WINTER ANTIQUES SHOW

SPECIAL SHOW SECTION





STEPHEN & CAROL HUBER, Old Saybrook, Conn. — Cartography was one of the many disciplines studied by young schoolgirls. This incredibly detailed embroidered map of the world, worked by S. Barwick, was completed June 3, 1783, and reflects the latest discoveries. It depicts the Western and Eastern Hemispheres and is embellished in the corners with representative images of the four continents. It is stitched with silk thread on a silk background and measures 19½ by 31¼ inches with the frame.



H. BLAIRMAN & SONS LTD, London — Umbrella stand designed by Dr Christopher Dresser (1834–1904), manufactured by Coalbrookdale, English, 1870s. Provenance: English private collection. Exhibited at the London International Exhibition, 1871 (same model). Literature: *Christopher Dresser 1834-1904 exn catalog*, Camden Arts Centre, 1979, no. 3.



JOAN B. MIRVISS LTD, New York City — Matsui Kosei (1927–2003), mid-sized round neriage (marbelized stoneware) vessel comprised of abstract floral patterning in shades of blue, white and gray, circa 1988, 9-1/8 by 9-3/4 inches.

WINTER ANTIQUES SHOW
January 20-29, 2017



BARBARA ISRAEL GARDEN ANTIQUES, New York City — Near pair of terracotta plaques by Robert Wallace Martin (1843–1923), English, dated 1868 (female subject) and 1871 (male subject), 26 inches high.

GALERIE ST. ETIENNE

Representing the Estates of Grandma Moses and Leonard Baskin

Exhibiting at the Winter
Antiques Show
Park Avenue Armory
at 66th Street, New York City
January 20–29
Booth 65

24 West 57th Street
New York, N.Y. 10019
212-245-6734
gallery@gseart.com
www.gseart.com



Anna Mary Robertson (“Grandma”) Moses. *Blacksmith Shop*. 1955. Oil on pressed wood.
Signed, lower right. 18” x 24” (45.7 x 61 cm). Kallir 1168.

© Grandma Moses Properties Co., NY

WINTER ANTIQUES SHOW

SPECIAL SHOW SECTION

Aronson
DELFTWARE
ANTIQUAIRS SINCE 1881
DELFTWARE.COM



PAIR OF LARGE DELFT CASHMERE PALETTE VASES AND COVERS
LAMBERTUS VAN EENHOORN, 'METAAL POT' FACTORY (1691 - 1721)
25 3/4 INCHES HIGH

WINTER ANTIQUES SHOW, NEW YORK, JANUARY 20 - 29, 2017
T. 011 31 20 623 3103 OR DURING THE SHOW T. (646) 415 2561



WINTER ANTIQUES SHOW

SPECIAL SHOW SECTION





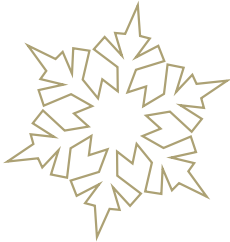
青 *Colors of Nature in Blue+Green*
At the 65rd Annual Winter Antiques Show
Booth #6



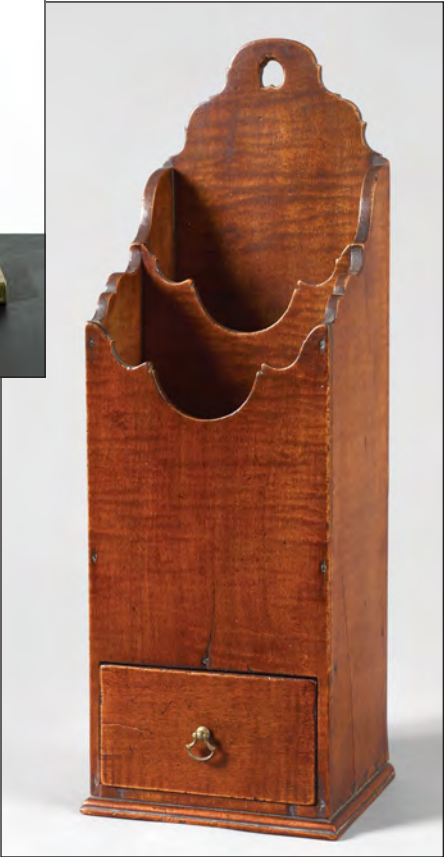
JOAN B MIRVISS LTD
JAPANESE ART Antique - Contemporary
39 East 78th Street, 4th Floor | New York NY 10075
Telephone 212 799 4021 | www.mirviss.com



JONATHAN BOOS, New York City — Harry Bertoia (American, 1915–1978, untitled (20 Rods), circa 1970, beryllium copper with monel weights, 13 by 8 by 2½ inches.



TILLOU GALLERY, Litchfield, Conn. — This rare two-stage pipe box has a cutout shaped back with a heart-form hanger above stepped down compartments with carved shaped edges above a drawer with fine dovetail construction. It is in fine condition, refinished, some bleeding to the original wrought nails. The pipe box is of maple and figured maple, New England, measuring 18 inches high, by 5¼ inches wide by 5-1/8 inches deep, circa 1760–80.



Gemini Antiques Ltd.

Antique Toy, Bank and Soldier Specialists Booth #45



P.O. Box 635, Oldwick, NJ 08858
Leon Weiss: 917-991-7352 or leonweiss@me.com • Steven Weiss: 212-729-0011 or sweiss57@me.com



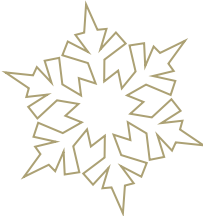
WINTER ANTIQUES SHOW

SPECIAL SHOW SECTION





H. BLAIRMAN & SONS LTD, London — This sideboard is after a design published by Bruce Talbert (1838–1881), English, circa 1875. Literature: Bruce Talbert, et al, *Fashionable Furniture. A Collection of Three Hundred and Fifty Original Designs Representing Cabinet Work, Upholstery and Decoration by Various Designers*, including 100 sketches by the late Bruce Talbert, Architect, London, 1881, figure 9.



JOAN B. MIRVISS LTD, New York City — Kawase Hasui (1883–1957), “Karikachi Mountain Pass in Moonlight,” circa 1927, Oban Tate-e.



BARBARA ISRAEL GARDEN ANTIQUES, New York City — Carved marble figure of a boy by Benjamin Edward Spence (1822–1866), English, circa 1850, 37 inches high.

TILLOU GALLERY, Litchfield, Conn. — This example is one among a group of carved stone pieces (marble, granite) initialed HD discovered on the Main Line of Philadelphia. Most of the examples known have some biblical references or iconography but are whimsical in their design and representation. Although little is known about HD as a sculptor, the known works are true examples of Twentieth Century folk art. Most works have a biblical or allegorical context, but they are not contrived or derived from traditional religious artworks. Rather, HD uses these images in a novel way according to his own fresh, whimsical vision. The central female figure seated below a heart and rays from the sun is flanked by winged angels above columns with ivy vines with tree below. The lamb at the base is flanked by initials HD and 1932. The form and the scale of the piece along with the iconography may resemble a gravestone, yet the top is carved out and it bears no name except for the artist initials and date. We conclude it to be another whimsical example of the artist’s work, reflecting characteristic creative use of material and form. It measures 35 inches high by 18½ inches wide by 7 inches deep.



Cincinnati Stove Works Horse and Rider Advertising Sign, c. 1903. Cast iron. Depicting a woman riding sidesaddle on a galloping horse. TRADEMARK cast on the horse’s neck, CINCINNATI STOVE WORKS on the saddle blanket and R CIN. IRON FDY/CIN., O. 1903, on the reverse with raised marks. The Cincinnati Stove Works, incorporated c. 1879, was a leading manufacturer of cooking stoves and all kinds of stove hollow-ware, such as pots, skillets, griddles, iron heaters, tea-kettles and wash-boilers as well as parts for the repair of stoves. Theodore Cooke, one of Cincinnati’s most prominent citizens, served as president. 27 ¾” h x 41 ½” w

ON THE GREEN: 39 WEST STREET, LITCHFIELD, CT 06759 • 860-567-9693 • TILLOUANTIQUES.COM



WINTER ANTIQUES SHOW


SPECIAL SHOW SECTION




STEPHEN & CAROL

HUBER

America's Preeminent Source for Girlhood Embroideries



Chester County, PA 1845



Jane Elliott worked this graphically dynamic sampler at age 16. She was one of nine children of Joseph C. Elliott and Margaret Sturgis. Wool on linen; 27" x 31" framed.

FORTY FERRY ROAD, OLD SAYBROOK
CONNECTICUT 06475
Tel 860-388-6809 • Hubers@AntiqueSamplers.com
www.AntiqueSamplers.com



TILLOU GALLERY, Litchfield, Conn. — Rare Federal window seat, mahogany, beech (American beech by microanalysis), may have been one of a pair for underneath two large Palladian windows. Having a bowed front seat framed, the bench is supported by finely turned and carved reeded legs. It measures 17½ inches high by 57 inches wide by 19 inches deep, American, probably New England, circa 1800-15. It is in excellent condition, has old varnish finish and seat frame and blocking all original.



H. BLAIRMAN & SONS LTD, London — Winter and summer drawings, after designs by Sir Edward Burne-Jones (1833-98), were probably workshop copies for use by tile painters. The first set of tiles representing the seasons produced by Morris, Marshall, Faulkner & Company (1861-75) was for the painter Myles Birket Foster (1825-99), an important early patron of the firm. The tiles which originally decorated a bedroom at The Hill, Foster's house at Witley, Surrey, are now in an English private collection.



BARBARA ISRAEL GARDEN ANTIQUES



A carved marble bath with wrythen decoration and later applied lion masks, on later block feet, Italian, ca. 1790. 23 ins. high, 69 ins. long, 28 ins. wide. A similar marble bath stands in the courtyard of the Villa d'Este outside Rome.

Barbara Israel Garden Antiques specializes in the finest antique garden ornament and furniture from Europe and America. Call to inquire about our on-site ornament placement and design services.

By Appointment · Katonah, NY · 212-744-6281
www.barbaraisrael.com

WINTER ANTIQUES SHOW

SPECIAL SHOW SECTION



STEPHEN & CAROL HUBER, Old Saybrook, Conn. — Left unsigned, this graphic embroidered and painted memorial worked circa 1830 is a rare example of the exquisite needlework produced under the instructresses at the Moravian School in Bethlehem, Penn. It is stitched with silk thread on a silk background and measures 23½ by 23 inches with the frame.



JOAN B. MIRVISS LTD, New York City — Kato Yasukage (1964–2012), oribe-glazed comma-shaped vase with textured surface, glazed stoneware, 2007, 16½ by 17 by 5 inches.



JONATHAN BOOS, New York City — Suzy Frelinghuysen (American, 1912–1988), “Composition,” oil and collage on Masonite, 8 by 10 inches.



BARBARA ISRAEL GARDEN ANTIQUES, New York City — Pair of life-size greyhounds, English, circa 1880.

H. BLAIRMAN & SONS LTD



Writing table and armchair

Designed by C.F.A. Voysey
(1857–1941)
English, circa 1900

Writing table

Oak, with original brass handles
Height: 29 ¼; Width: 48;
Depth: 29 ¼

Provenance:

Private collection

Armchair

Oak, with original rush seat
Height: 40; Width: 24;
Depth: 18 ¾

Provenance:

H. Blairman & Sons, 1993;
private collections

Literature:

John Brandon-Jones, *et al.*, *C.F.A. Voysey architect and designer 1857–1941*, 1978, C.17
(for another example)

PO Box 6374
London W1A 3UR
tel: +44 (0) 207 493 0444
cell: +1 917 297 2167

e mail:
blairman@blairman.co.uk
www.blairman.co.uk

by appointment:
Mayfair, London